

Setup Guide

Peephole Cam



Quick Start

1. Download and open Ring app.
Select **Set Up a Device**.

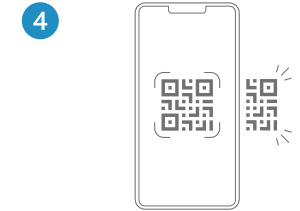
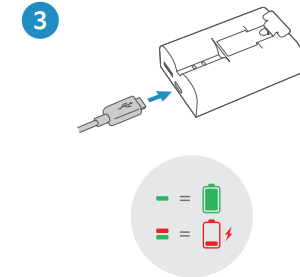
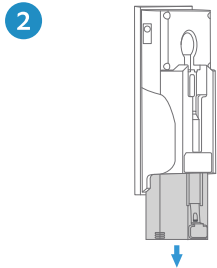
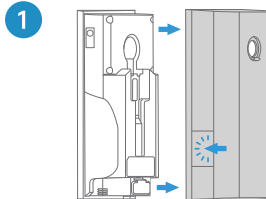
2. Scan QR code with Ring app.
Use this code or the one on your device to continue setup.



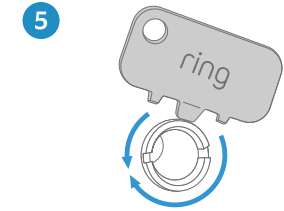
Tool included



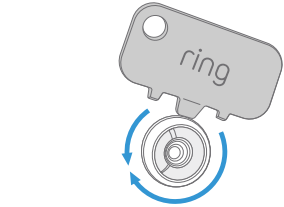
! Remove protective film from device. This ensures your device works properly.



Continue setup in Ring app.



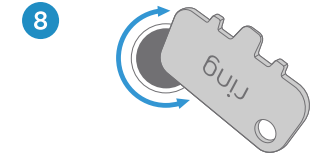
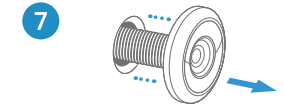
Inside



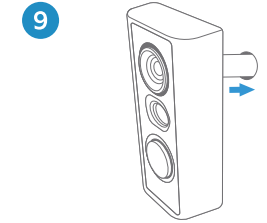
Outside



Put the tool's flat edge in the slots to unscrew.



Smooth out the hole's edges with the tool.



Outside

10



Remove cap.

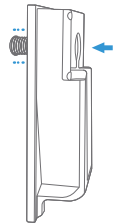
11



Optional: Install the large view hole adapter if needed.

9

12



Inside

13



Draw the cable out of the tube until there's no slack.

10

14

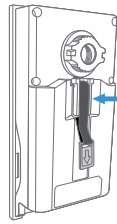


15



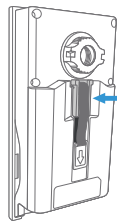
11

16



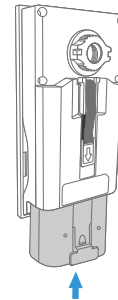
Gently pull excess cable through clip.

17

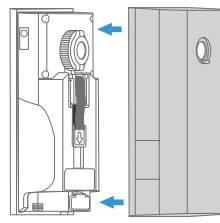


12

18

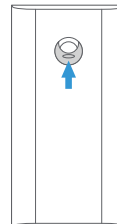


19



13

20



Slide peephole cover up for privacy.

14

Free Ring Protect Plan for 30 Days

Your new device comes with a free, 30-day trial of Ring Protect. This comprehensive subscription service lets you review, save, and share your video and photo history anytime so you never miss a moment.*

To continue using Ring Protect after your free trial ends, visit ring.com/protect-plans to compare plans and pricing.



*Your free trial isn't applicable for locations with an existing Ring Protect subscription. See ring.com/protect-plans to learn more about your plan's retention period.

ring

For additional help, visit ring.com/help
Or give us a call

US 1 800 656 1918

Canada 1 855 300 7289

Worldwide +1 310 929 7085

For a list of all our customer support numbers, visit ring.com/callus

For information on our warranty, theft protection, and Ring Protect Plans, visit ring.com/legal

© 2022 Ring LLC or its affiliates. Ring and all related marks are trademarks of Ring LLC or its affiliates.

