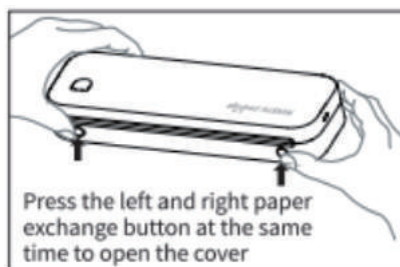


## How to install ITP01 printer on a computer ?

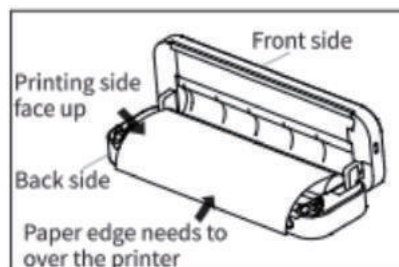
### Preparation

1) Open the paper compartment cover and load paper correctly.

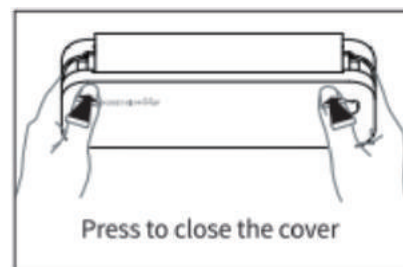
Replace Paper



① Open The Cover



② Put Paper



③ Close The Cover

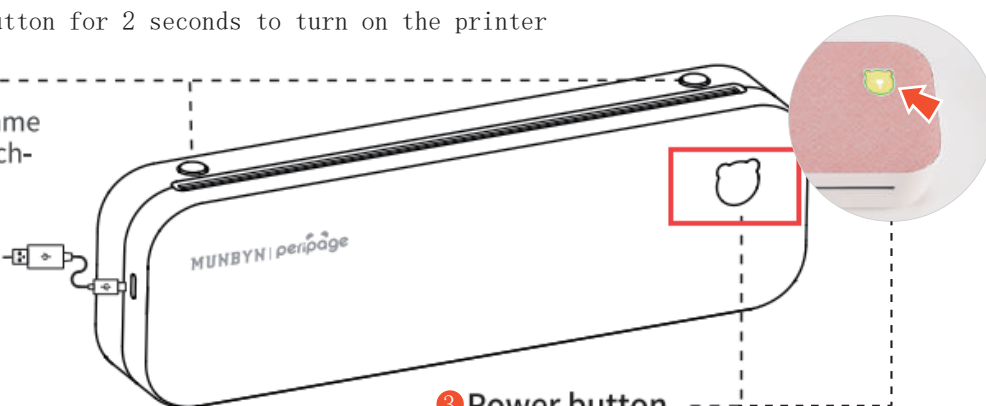
2) Press and hold the power button for 2 seconds to turn on the printer

#### ① Paper change button

- Press the buttons at the same time to open cover and exchange paper.

#### ② Type-C data cable

- Charged with power bank or mobile phone charger.



#### ③ Power button

- Press and hold 2 seconds to turn on/off.
- Double click to print device connection QR code.
- Click to terminate printing.

### Power Indicator Status

- Green light on: Normal use status/full charged.
- Red light on: Cover opened/No paper/Over-heat/Charging.
- Green light flashing: Paper suction mode, please install the folded paper.
- Red light flashing: Low battery, please charge in time.

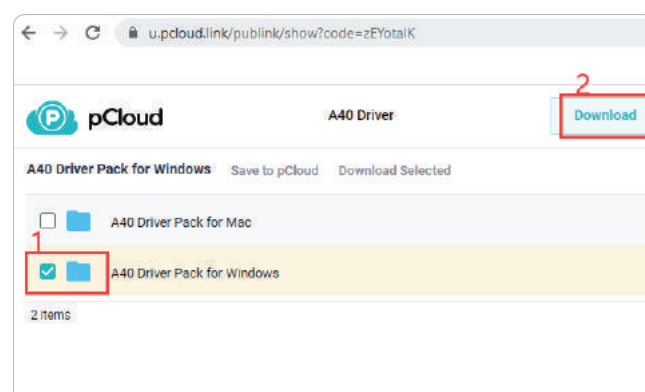
### ■ For Windows computer

1.1 Unplug the USB-A to typC adapter, and use the USB cable to connect to a Windows computer

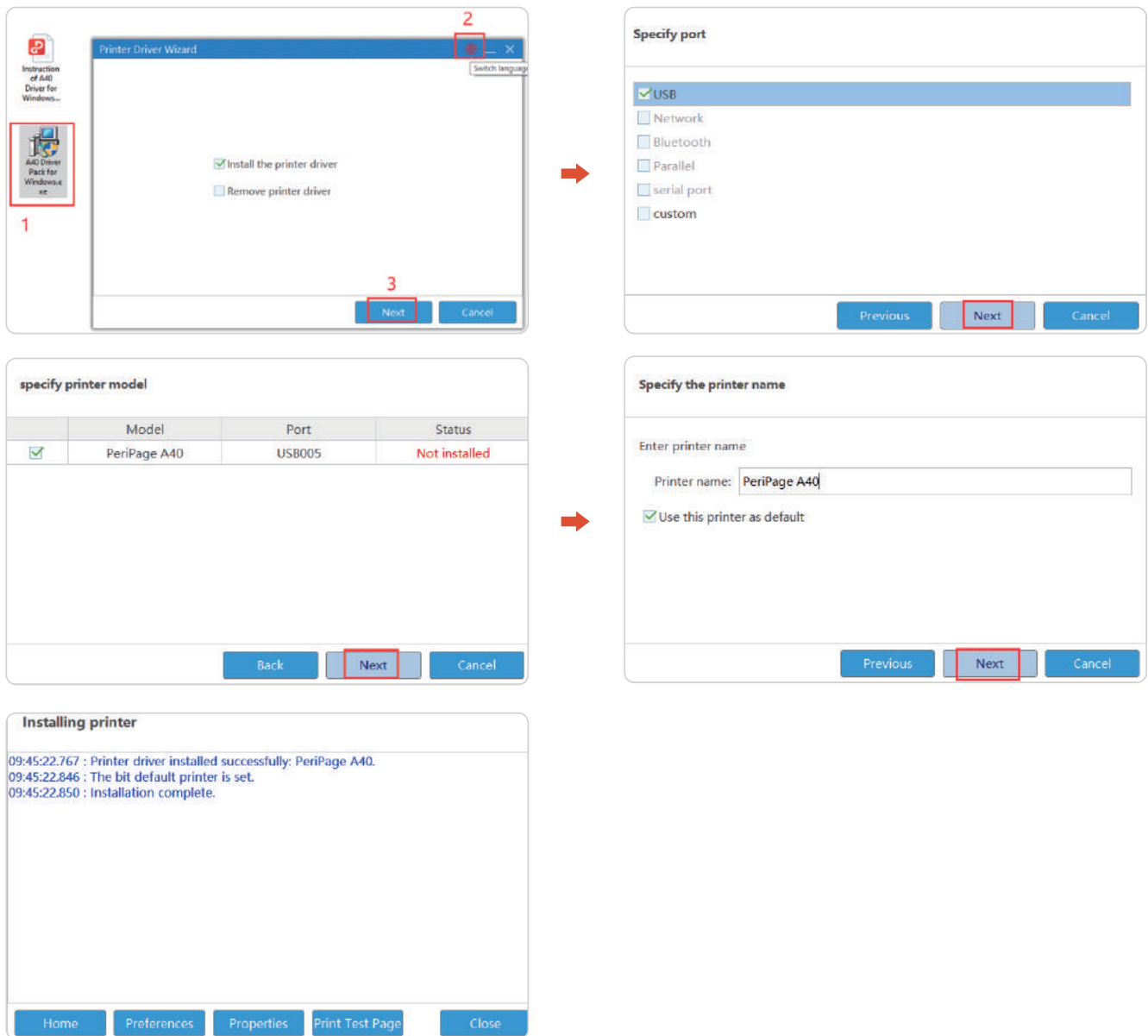


1.2 Driver installation

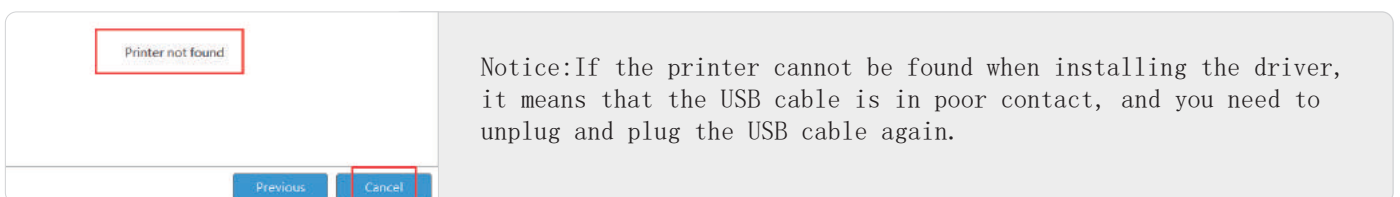
Download link: [munbyn.biz/A4Drivers](https://munbyn.biz/A4Drivers)



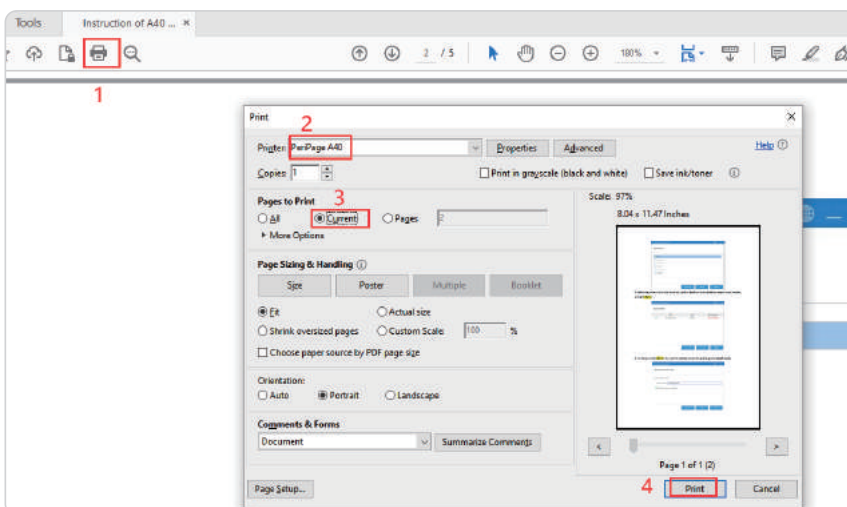
## 1) Overview



## 2) \*Notice



## 1.3 Start to print



Open the PDF file, using Adobe acrobat reader as an example, select the corresponding parameters to print, if there is a size option, please choose A4 size.

Demo video link:  
[munbyn.biz/A4WindowsV](http://munbyn.biz/A4WindowsV)



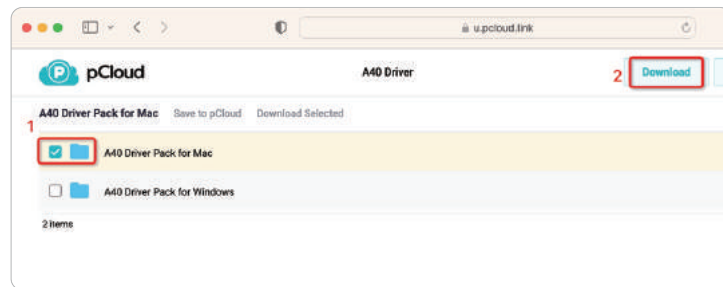
## ■ For Mac PC

1. Connect to a Mac computer using the included data cable

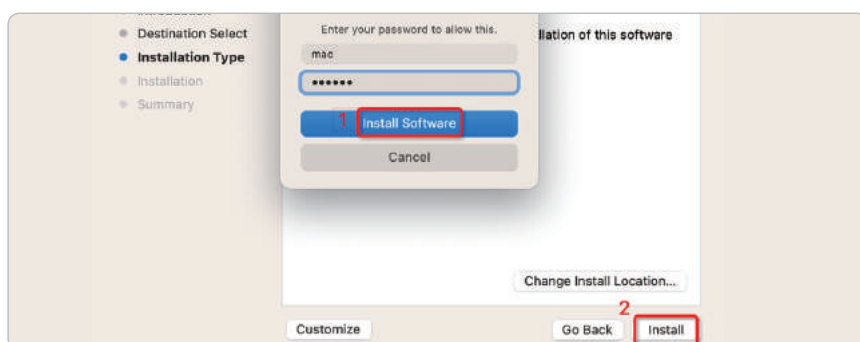
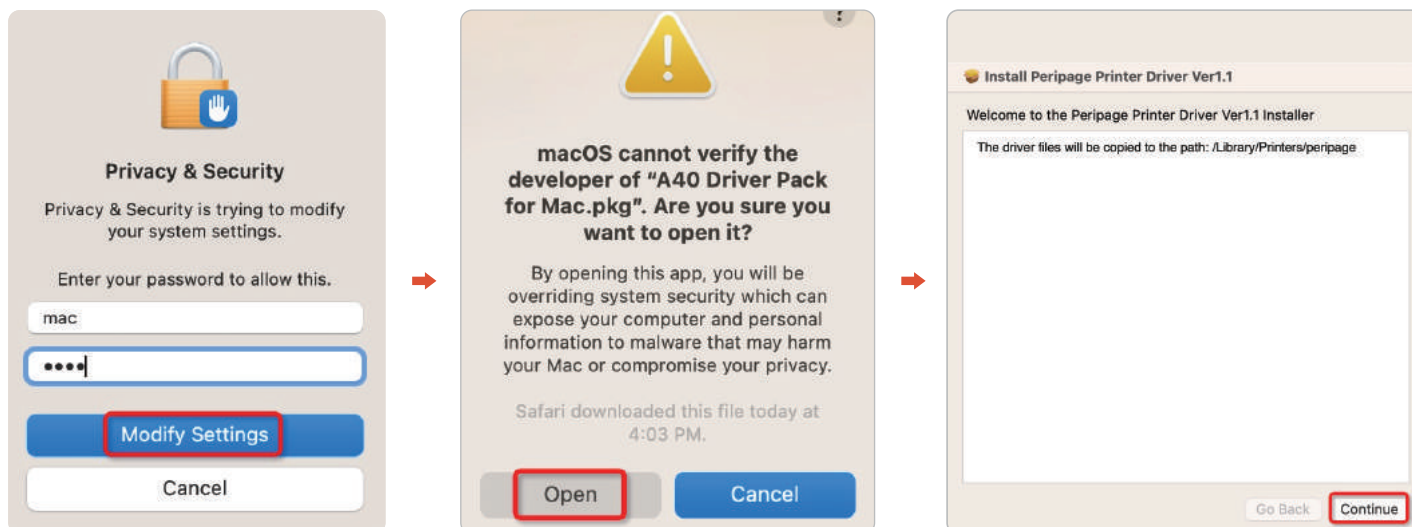
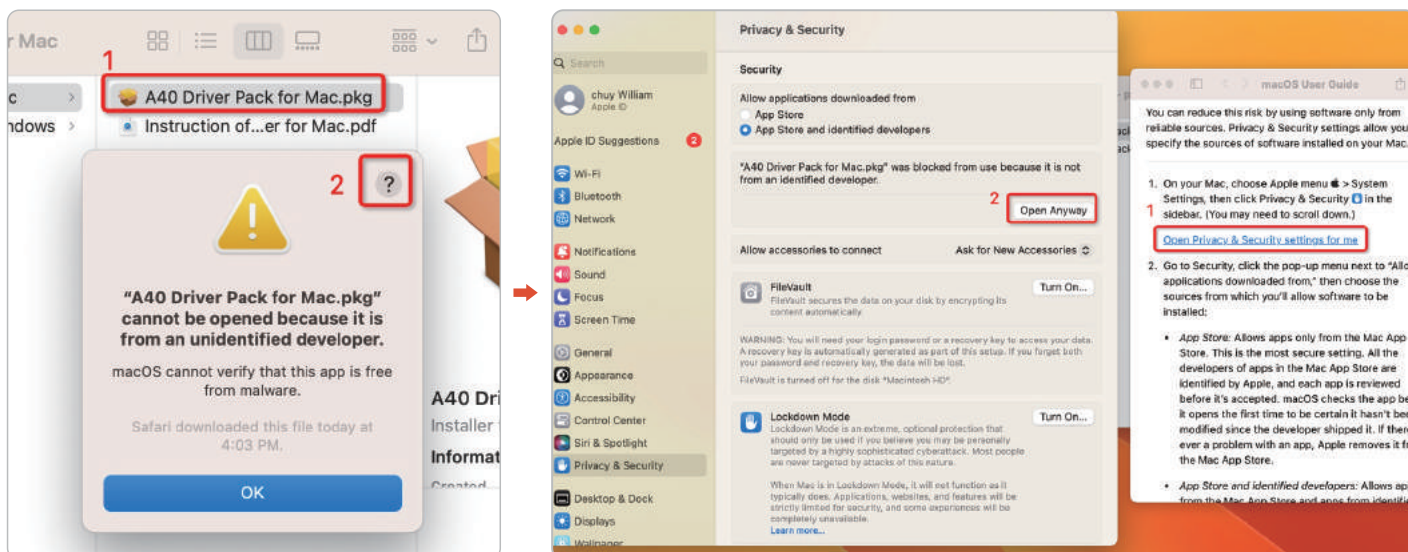


## 1.2 Driver installation

Download link : [munbyn.biz/A4Drivers](http://munbyn.biz/A4Drivers)



- 1) After clicking the driver file, the Mac prompts you that it cannot be opened, you can follow the steps to open the trusted driver and open it.



The sequence of screenshots illustrates the process of adding a printer:

- System Settings - Printers & Scanners:** The 'Printers & Scanners' section is selected in the sidebar. The main area shows 'No Printers' and an 'Add Printer, Scanner, or Fax...' button.
- Add Printer:** The 'Add Printer' window is open, showing a list of available printers. 'PeriPage A4' is selected.
- Printer Software:** The 'Printer Software' window is open, showing a list of printer drivers. 'PeriPage A4' is selected.
- Add Printer:** The 'Add Printer' window is open, showing the details for 'PeriPage A4'. The 'Add' button is highlighted.

