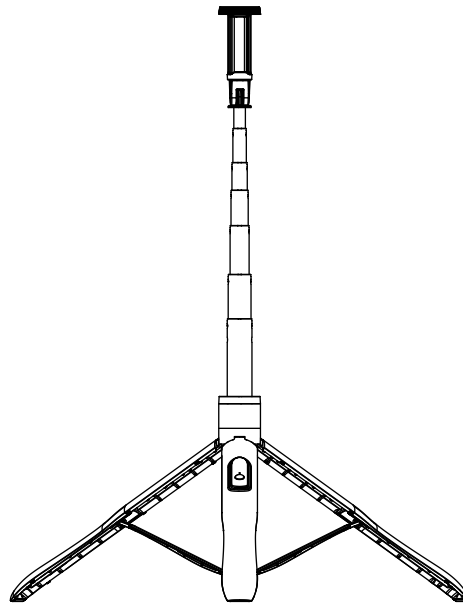


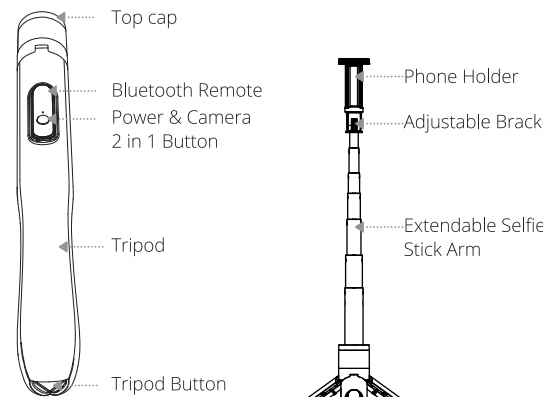
ATUMTEK

## User Manual

ATUMTEK 58.7" Selfie Stick Tripod  
with Bluetooth Remote



### PRODUCT LINE GRAPH

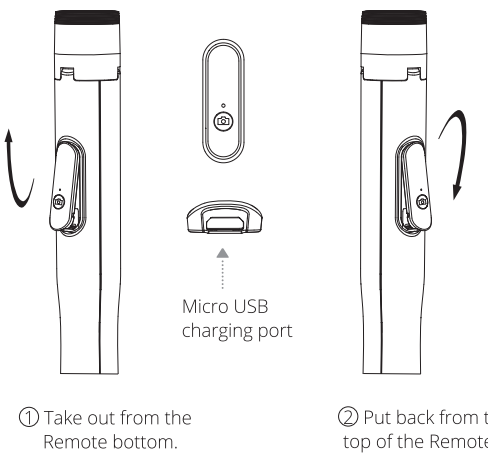


1

### Product Parameters

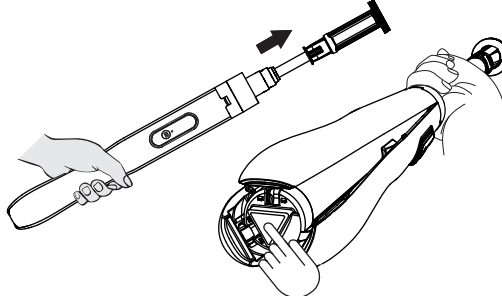
Weight	Approx. 410 g
Remote distance	<10m(33ft)
Ambient temperature	-10℃~50℃
Remote battery capacity	50 mAh
Input	5V/110 mAh
Compatible devices	iOS 7.0 and later/ Android 5.0 and later
Device width	Approx. 2.36" - 3.74"
Extended length w/o tripod activated	Approx. 13.8" - 58.3"
Extended length with tripod activated	Approx. 13.2" - 58.7"
Folded size	Approx. 12.8" * Φ1.57"
Remote button lifespan	>15,000 times

### How to take out / put in wireless Bluetooth remote

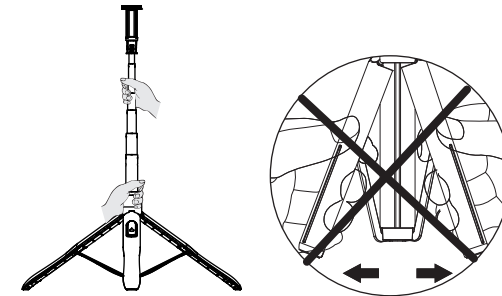


### How to use

Step 1: First pull out the phone holder, then press the tripod button on bottom to unlock the 3 legs slightly.  
ATTENTION:  
When you press the bottom button, please avoid to hold the top of tripod.

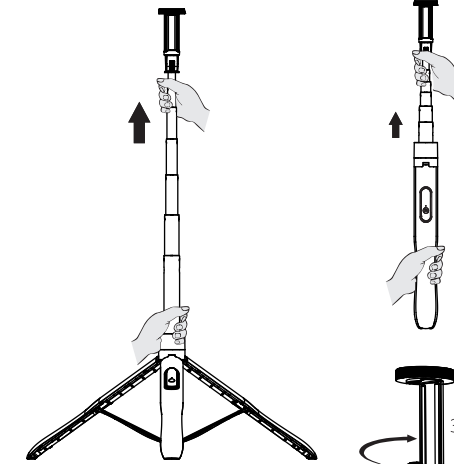


Step 2: Now pull the whole stick arm out, and the tripod will open automatically.  
ATTENTION:  
1. Please fully pull out the stick arm so that the tripod can be fully opened. Otherwise, tripod is not fully opened and will not be stable.



2

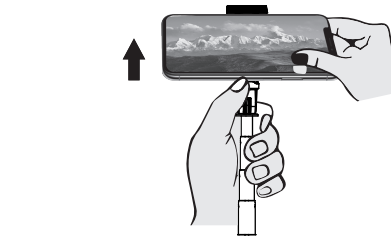
Step 3: Extend the adjustable stick arm to suitable height according to your demands;



360° Horizontal Rotation of Phone Holder;  
180° Vertical Rotation of Adjustable Bracket.

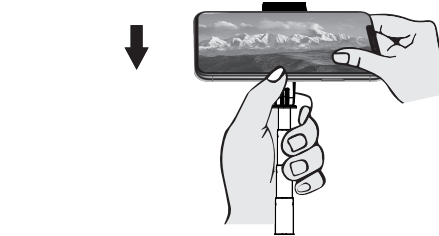
3

Step 4: Widthwise set your phone inside the smartphone holder by releasing the top cap.  
Note: Please avoid stuck your phone button. And do not over-extend phone holder in case to break it.

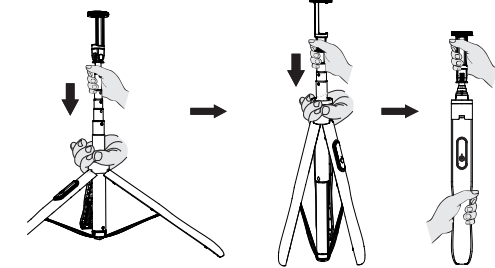


### How to Close

Step 1: Remove your mobile phone by releasing the top cap.



Step 2: Hold the bottom part of stick, then pull back the extendable stick one by one; finally push the phone holder back.  
Note: If you open the tripod, the tripod will close automatically when push back the aluminum alloy telescopic arm. Manual operation is prohibited.



WARNING:  
Do not push the 3 legs to close!!! It will break legs!!!

NOTE:  
1. Open your built-in camera in your phone and press the power & camera 2 in 1 button of once for taking a photo.  
2. The wireless Bluetooth remote will connect directly after switch on if it is already connected with the phone Bluetooth in last time.  
3. The Bluetooth will automatically disconnect when the distance is greater than or equal to 10 meters.  
4. Turn the Bluetooth off in your phone and the wireless Bluetooth remote will standby.  
5. How to disconnect with your phone: Go to your phone Bluetooth setting and disconnect "ATUMTEK" in paired devices.  
6. Unavailable to use to control the built-in camera app in your phone when the wireless Bluetooth remote in charging.

4

### Bluetooth Connect Instruction

No.	Status	LED Light Indicator
1	Switch On	Green Light Flashing
2	Switch Off	LED Light OFF
3	Standby	LED Light OFF
4	Low Power	Red Light Flashing
5	Charging	Red Light ON
6	Fully Charged	LED Light OFF
7	Connected	Green Light ON
8	Connectionless	Green Light Flashing

\*6 It takes about 2 hours to fully charge the remote.

First long press the camera button for 2 seconds, then connect with "ATUMTEK" when green light is flashing, finally press once to take a picture or record video.

If phone could not connect, clean phone Bluetooth connection first, then try again; some Android phones use volume button to control camera, so if you still could not use remote, please choose "take a picture" or "take a video" on camera setting part. Or please contact with seller directly to get support.

ATUMTEK

Thank you for choosing ATUMTEK!

ATUMTEK provides warranty coverage of 36 month on all of its brand name products purchased through authorized channels.

If you need help with this product, please do not hesitate to contact us via:

www.atumtek.com

OR

support@atumtek.com

EC	REP	Prolinx GmbH Brehmstr.56, 40239 Duesseldorf Germany
UK	REP	Syncwire UK Ltd C/O Lai and Co.109 Portland Street, Manchester, M1 6N