

# MASINGO

It's a karaoke

**PARTY**

all night long

Karaoke Machine *Soprano X1*

# USER MANUAL

# MASiNGO

## Performer's Manual



Karaoke Machine - Soprano X1

# ***Congratulations!***

## **You've just taken your party game up a notch**

---

Whether you're celebrating with a few friends or with the whole gang—in the comfort of your home or in a big event space—your parties will be peppier with this beautifully-designed, **Soprano X1 – Karaoke Machine** from Masingo.

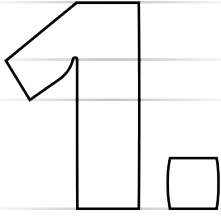
Choose from Bluetooth, AUX, USB, FM, or MicroSD and get the music going. Sing out some show tunes with grandma, blast out some big hits with your pals, or serenade your sweetheart. Use the invigorating LED lights to set the stage as you belt out your best into one of our karaoke microphones. You can even adjust your volume and vocal effects to enhance your performance. No matter what your skill level, this box of magic is sure to delight vocalists of all ages—from 5 to 125.

Need to send out some announcements during your big bash? No problem! This portable, multi-functional machine doubles as a punchy PA system. Simply turn off the music and speak into the mic for volume-adjustable, crystal-clear announcements.

When all is said and sung, just turn off the machine. In no time at all, you'll be ready for an encore.

**Sing on!**





# ***It's the whole package!***

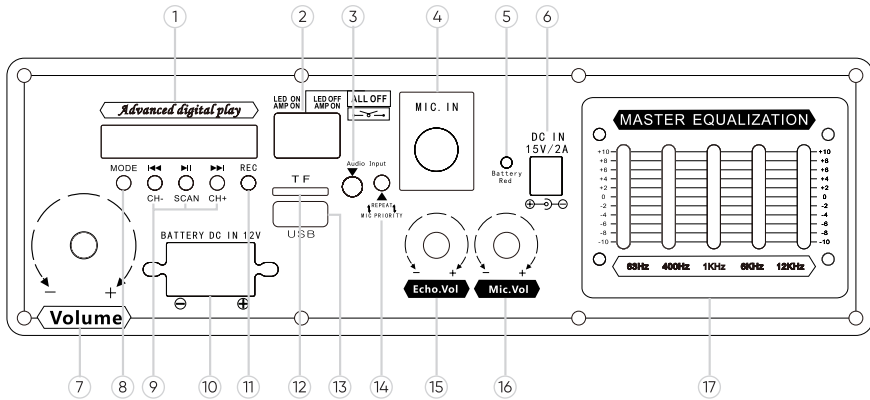
## Parts & features

---

### **What's included...**

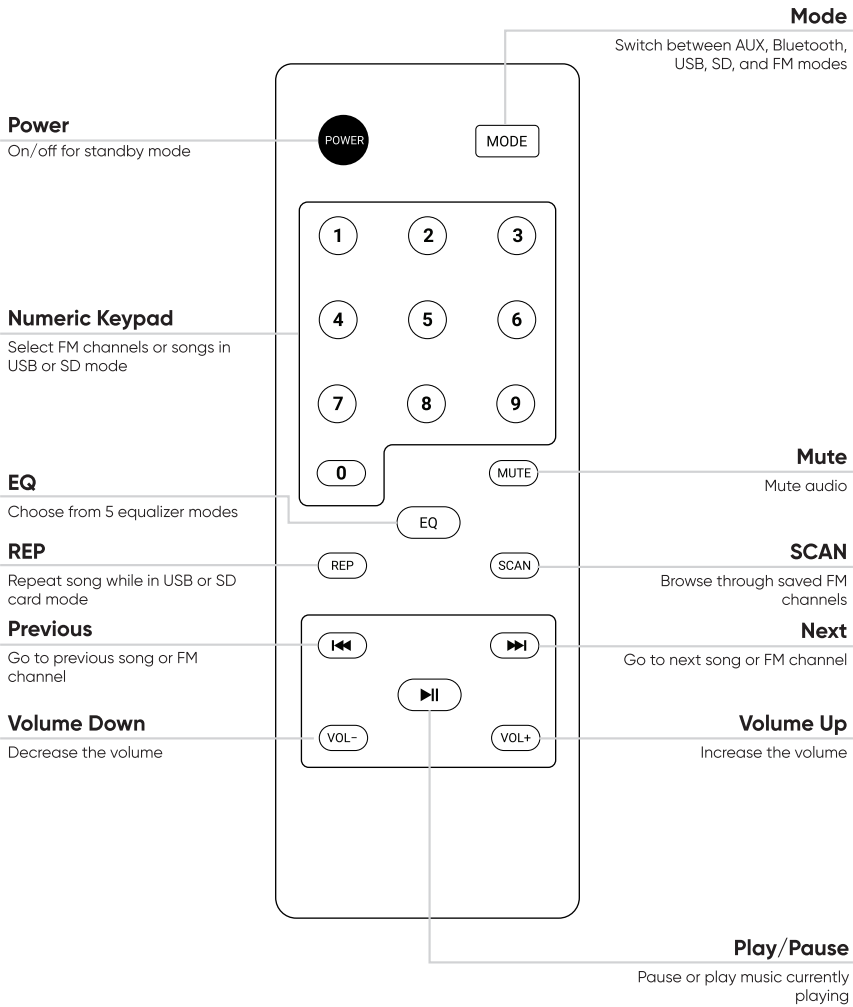
- |                             |                       |
|-----------------------------|-----------------------|
| 1x Masingo Karaoke Machine  | 1x AUX cable          |
| 2X Wireless Microphones     | 1x AUX-RCA cable      |
| 1x Remote control           | 1x Device holder      |
| 1x Micro-USB charging cable | 1x Performer's manual |
| 1x USB charger plug         |                       |

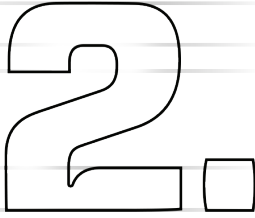
## Function Board



- |   |                             |
|---|-----------------------------|
| 1. Digital Display                          | 10. DC12V Car Battery Input |
| 2. Power, LED Lights, and Disco Ball On/Off | 11. Record                  |
| 3. AUX Input                                | 12. MicroSD Slot            |
| 4. Mic Input                                | 13. USB Port                |
| 5. Charging Indicator Light                 | 14. Mic Priority            |
| 6. DC15V/2A Charging Cable Input            | 15. Mic Echo                |
| 7. Master Volume Control                    | 16. Mic Volume              |
| 8. Mode                                     | 17. Master Equalizer        |
| 9. Play and FM Controls                     |                             |

# Remote Control





## ***Take note:*** **Review before using**

---

1. Keep this manual for any future reference.
2. Adhere to all warnings.
3. Keep ventilation openings clear; do not block any of this machine's vents/openings.
4. Install and set up the machine according to the manufacturer's instructions provided in this manual.
5. Do not install near any heat sources (i.e. radiators, heat registers, stoves, amplifiers, or any other objects that produce heat).
6. Use the polarized plug or grounding type plug carefully. These plugs are made for safety purposes. A polarized plug has two blades with one wider than the other. A grounding type plug has two blades and a third grounding prong. The wider blade and the third prong are provided for your safety. Please consult an electrician if the provided plug does not fit into your outlet.
7. Protect the machine's power cord. Prevent the power cord from being walked on or pinched – particularly at the plugs, convenience receptacles, and the point from which they come out of the machine.
8. Unplug the machine during lightning storms or when unused for long periods of time.
9. Refer all technical services to qualified personnel. Servicing is required when the machine has been damaged in any way, such as damage to the power-supply cord or plug, contact with liquid, exposure to moisture or rain, failing to operate normally, if the machine has been dropped, etc.
10. Do not force the SD card into its slot. It can only be inserted in one direction. If the card does not insert easily, remove it and try reinserting in the opposite direction.
11. To maintain peak performance and battery longevity, fully charge the karaoke machine at least once every three months and before storing it away for a long period of time.



Do not expose this product to water, moisture, heat, or steam. Do not place objects filled with liquid on this product.



Replace battery only with the same or equivalent type and size. Danger of explosion if battery is incorrectly replaced.



Check the machine for damage before each use.



Clean and store the machine after each use.



Do not expose battery to excessive heat such as sunshine, fire, or other heat sources to reduce risk of fire or explosion.



Do not use the machine with attachments not approved by the manufacturer.



# 3

## ***Never miss a note*** Detailed usage guide

---

### Machine

#### How to charge the machine

Connect the charger plug into the machine's DC15V/2A Charging Cable Input and to a polarized outlet. Be sure to charge fully before each use. The indicator light will turn on to indicate charging.

---

#### How to turn the machine on/off

Press the left side of the **Power** switch on the machine's function board labeled MACHIN ON, DISCO ON to turn on the machine along with the LED lights and disco ball.

Press the right side of the **Power** switch on the machine's function board labeled MACHIN ON, DISCO OFF to turn on the machine without the LED lights or disco ball.

To turn off the machine (as well as the LED lights and disco ball if they are on), return the **Power** switch to its original middle position.

---

## Microphones

### How to charge the microphones

Plug the MicroUSB included into the bottom of the microphone and into a wall outlet. Be sure to charge fully before each use. While charging, the battery icon on the display will flash, then stop flashing when the battery is full.

### How to turn the microphones on

Turn on the microphones using the **Power** button on each handle. They will automatically connect to the machine.

Note: The microphones will automatically turn off after 15 minutes of no use.

### How to set up the microphone

The A-B button controls both the microphone's channel and the microphone's frequency band.

**IMPORTANT:** When using both microphones simultaneously, each microphone must be set to a different frequency band (that is, one must be set to CHA while the other one is set to CHB). If both microphones are set to the same frequency band, the microphone audio may cut in and out.

**Changing the Frequency Band:** The frequency band is represented by the letters CHA or CHB in the bottom left corner of the LED display. To change the microphone's frequency band, hold the A-B button for one second until the desired band is reached. One microphone **MUST** be set to CHA while the other **MUST** be set to CHB.

**Changing the Microphone Channel:** Channel is represented on the microphone LED screen as a number from CH1 to CH8. To cycle through possible channels, click the A-B button until the desired channel is reached. Unlike frequency bands, having both mics on the same numbered channel will not negatively impact performance.

---

### How to customize your microphone vocal mix

To adjust the volume of your singing over the music, click the **Volume +/-** buttons up or down as desired. Use the **EQ** button to choose between 5 different equalizer selections.

## Music

### How to set up playback

Your machine has 6 different playback options: Bluetooth, SD, AUX, USB, FM, and PA. Each has its own hook up location (diagram on page 7) and set-up method (see the subsections below).

---

### How to connect to Bluetooth

Playing music from your device

Click the **Mode** button on the machine's function board until the digital display indicates you are in **Bluetooth** mode. Then, search for the machine name "MASINGO" under your device's Bluetooth connection settings and click to connect.

---

### How to use SD mode

Playing music from an SD card

Plug your MicroSD card into the **MicroSD Slot** on the machine's function board. The stored music on your SD card will begin playing automatically.

---

### How to start AUX mode

Playing music from an AUX-compatible device

Plug the AUX cable into the **AUX Input** on the machine's function board to activate AUX mode. Plug the other end of the cable into the designated input on your device and play your music just as you normally would.

---

---

### How to connect to a TV

Plug the AXU-RCA cable into the **AUX input** on the machine's function board to activate AUX mode in order to connect a TV. Insert the other end into the designated port on your TV and play your music just as you would in regular AUX mode.

### How to start USB mode

Playing music from a USB drive

Plug your USB into the **USB Port** on the machine's function board. The stored music on your USB will begin playing automatically.

---

### How to connect to FM mode

Playing music from an FM radio station

Click the **Mode** button on the function board of the machine until "FM" appears on the display screen.

Once the FM mode has been activated, press and hold the ►| button on either the remote control or function board for the machine to begin seeking and storing all of your local radio station channels.

After the scanning is complete, you can browse your saved channels by pressing **SCAN** on the remote control or simply switching through the channels by clicking ►| or ◀| on either the remote control or function board to select the radio station of your choice..

---

### How to use PA mode

When there is no music playing, this machine will automatically start PA Mode. Simply use the microphones by ensuring that they are turned on. Adjust the microphone's volume and echo on the machine's function board or the microphone itself.

### How to record

Begin by inserting a suitable recording device into the function board via the **MicroSD slot** or **USB port**. Ensure that the microphone is turned on and then proceed to press **REC** on the function board. Speak or sing into the microphone and when finished recording, click **REC** again to stop it.

To listen to the recorded audio, remove and then reinsert the USB or MicroSD recording device. The recording will begin playing automatically.

---

### How to use multiple playback modes

To use playback modes interchangeably, simply activate each mode according to the instructions above, then click **Mode** to switch between the inputs.

## Maintenance

### How to clean

Turn the machine and microphone off and unplug all wires.

Gently wipe the outside of the machine using a clean, dry cloth. Keep all vents, buttons, and openings free of lint and dirt. Do not immerse the machine in water and do not use any harsh cleaners.

### How to store

Charge the machine so that it's ready the next time you want to use it.

Make sure that the machine is clean and dry.

Bind the unplugged cord gently with an electrician-approved fastener.

Do not wrap the cord around the machine.

Store the machine in a cool, dry place away from damaging elements.

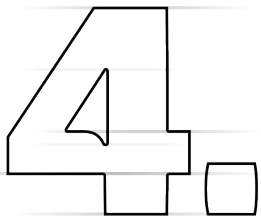
For best results, clean and store the machine after each use.

### How to transport

The Soprano X1 was designed intentionally with wheels at the bottom for easy transportation.

Simply unplug all wires and extend the handle on the machine to roll it around just like a suitcase.

Place the microphones in a suitable bag and carry them separately.



## ***When things go flat*** Troubleshooting

Problem	Solution
Machine will not turn on or powers on and then shuts down	The battery is depleted. Be sure to charge the machine after each use.
USB or Micro-SD mode will not work	<p>Turn off the selected mode, unplug either the USB or Micro-SD, turn it back on, and plug the USB or Micro-SD back in.</p> <p>Please note that the MicroSD card can only be inserted in one direction. Do not force it into its slot. If the card cannot be inserted easily, remove it and try reinserting in another direction.</p>
Microphone audio output is low quality or experiencing interference	<p>To prevent interference, do not hold the microphones too close to the karaoke machine.</p> <p>The maximum distance for the microphones to wirelessly connect and work properly is approximately 30 meters or 98 feet from the machine.</p> <p>The microphone's sound quality and wireless range may also be affected by low battery. Ensure that both microphones are adequately charged before use.</p>

<p>The remote control is not working</p>	<p>Because the remote control is wireless, it must be within close proximity to the karaoke machine and pointed towards it in order to work.</p> <p>If the remote control is still not working, try replacing the battery.</p>
<p>No sound is playing from the speaker</p>	<p>Ensure that the volume on the machine, remote, and your device (if applicable) are all turned up.</p> <p>Also check to see whether you are on Mute mode by pressing Mute on the remote control to see if the audio resumes.</p>
<p>Button or knob on the machine/remote control is not working properly</p>	<p>Power off the machine and turn it back on.</p>
<p>Display screen on the function board is not working or showing anything while LED lights are functioning as usual</p>	<p>Charge the machine's battery for at least 8 consecutive hours before trying to power it back on. Low battery is sometimes able to power the LED lights but will not be able to power the whole machine and all its functions.</p>



Machine is not playing the microphone vocals	<p>Ensure that each microphone is on a separate frequency band. This is represented by CHA or CHB in the bottom left corner of the microphone LED screen. (To switch channels, hold down the A-B button for one second). Microphones will not work properly unless one mic is set to CHA while the other mic is set to CHB.</p> <p>After 15 minutes of inactivity, the microphones will turn off.</p>
--	---

If any of these issues persist or if any part of the machine becomes damaged, discontinue use and consult a licensed electrician for repair. Do not attempt to modify or repair the machine yourself. You can also contact our customer service department (see back cover).

### **FCC:**

This device complies with part 15 of the FCC Rules. Operation is subject to the following two conditions: (1) This device may not cause harmful interference, and (2) this device must accept any interference received, including interference that may cause undesired operation.

**We're here for you.**

If you encounter any issues with your machine or have any questions or comments, please feel free to contact us. Have your warranty information on hand for faster service.

90-DAY  
LIMITED  
WARRANTY



1844-262-7464



support@masingo.net



www.masingo.net

***Love your new machine?***  
**We want to hear about it!**

