



Sony Walkman WM-FX20 Teardown

撰写者: JaosnT



介绍

My first Handheld Device. A Sony FM/AM Tape Cassette Walkman. It has Digital Controls for the Radio /Alarm Clock on the front and Old school cassette controls on the side. Found it again in a Logitech Tape Case with a Live Medski, Martin and Wood show from 99 in it. Runs on 2 AA batteries. This Walkman was my first Portbale device and I've kept it through all these years. Tis officially my first breakdown on IFIXIT



工具:

- [Phillips #1 Screwdriver](#) (1)
- [Spudger](#) (1)

步骤 1 — Sony Walkman WM-FX20 Teardown



- Good Ole Sony Walkman.

步骤 2



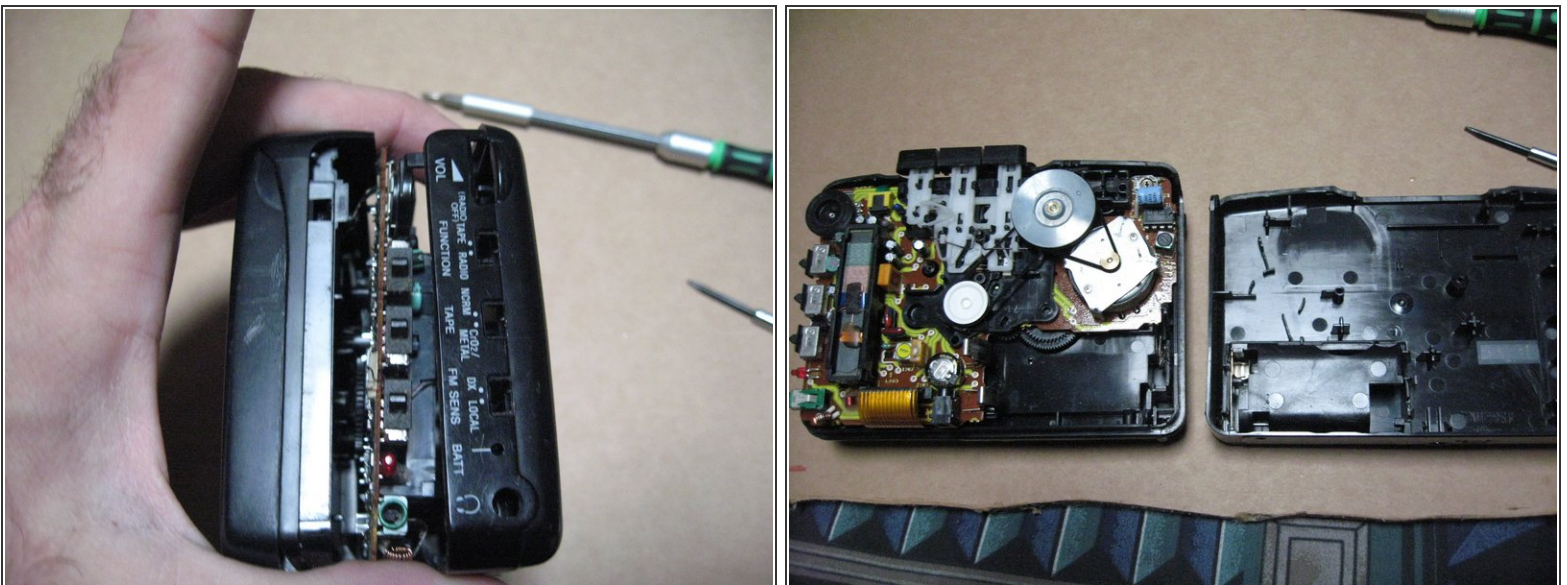
- Start with removing the screw on the Underside. The screw on the Backside next. Then the two on the reverse side of the tape controls.
- New line.

步骤 3



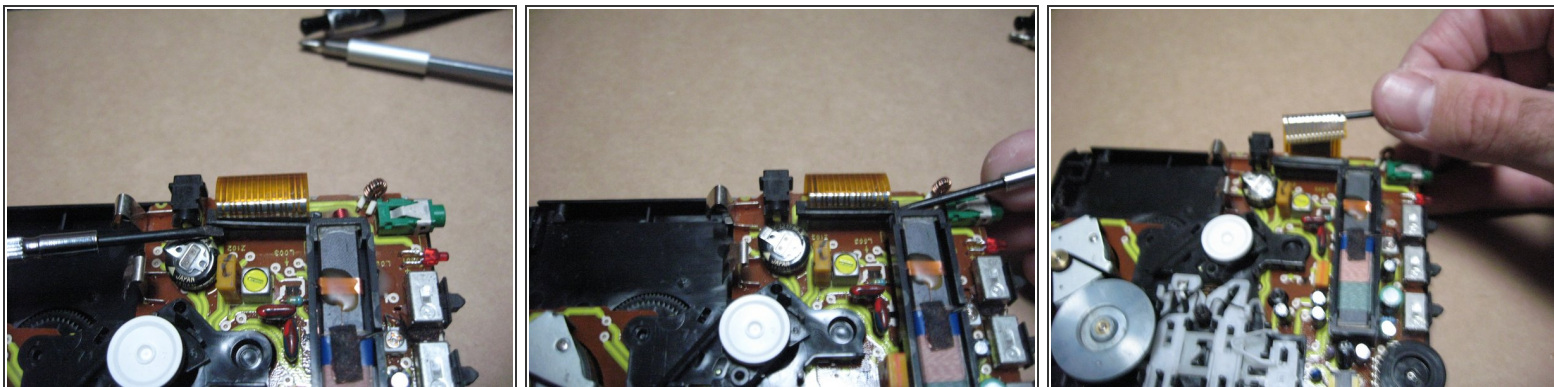
- With a small Phillips head, Pry the sides carefully.

步骤 4



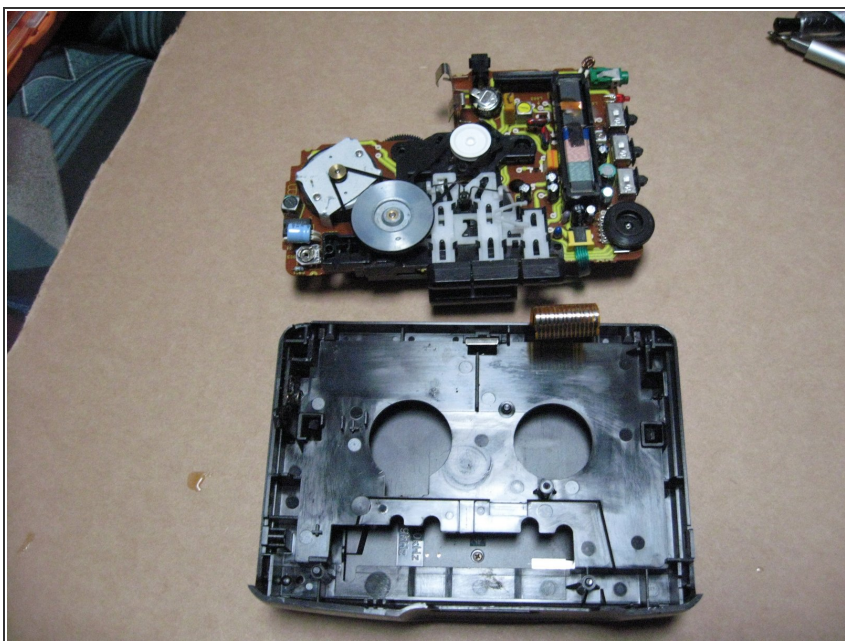
- Take care not to jostle the Switches on the top of the unit while removing case. So now we have removed the underside casing from the device.

步骤 5



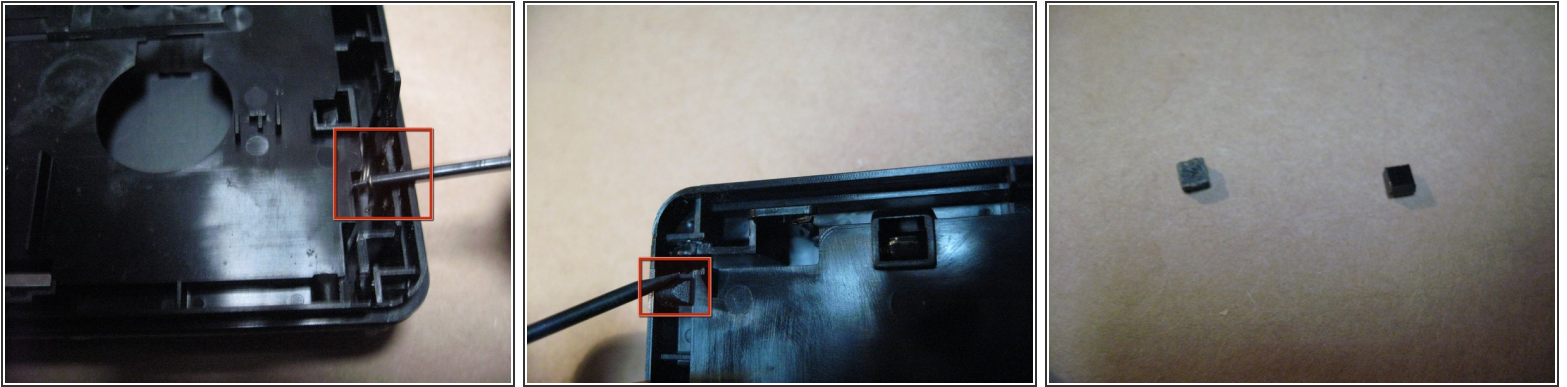
- Find Ribbon Cable that connects to the board. Carefully Pry open either side of connector as shown, then remove ribbon cable from board.

步骤 6



- Now we can remove the board from the casing.

步骤 7



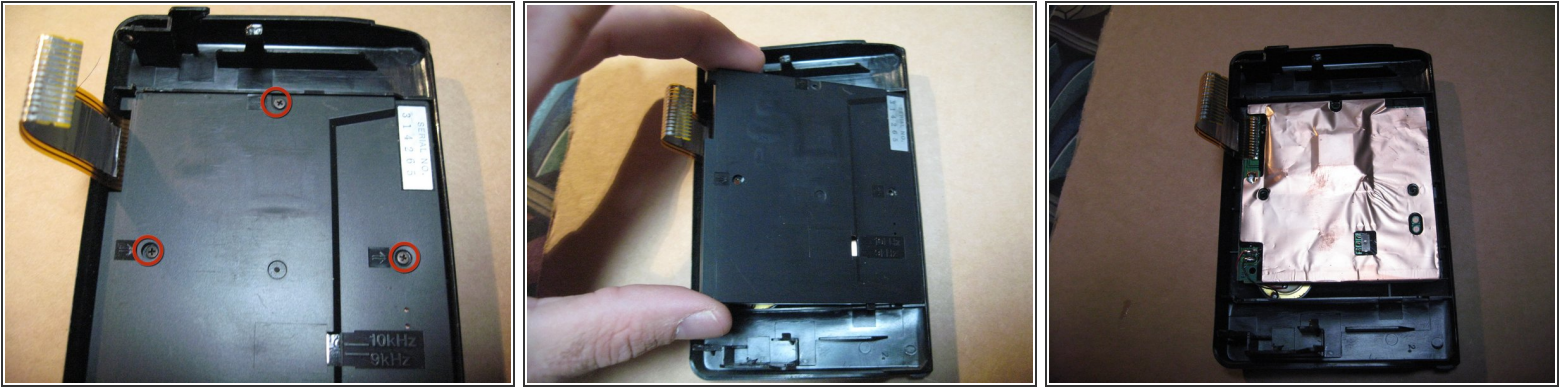
- ❗ If you do not need to replace the front door control assembly I would not suggest to continue any further- That little spring took me a good 40 minutes to properly get back in place. It is Crucial to get it in right so that the Cassette door stays flush and closed.
- Find Door Spring and remove carefully. Then find and pry off (on either side) glued on bumpers- These limit the distance the door hinge can travel in order to be pulled off---

步骤 8



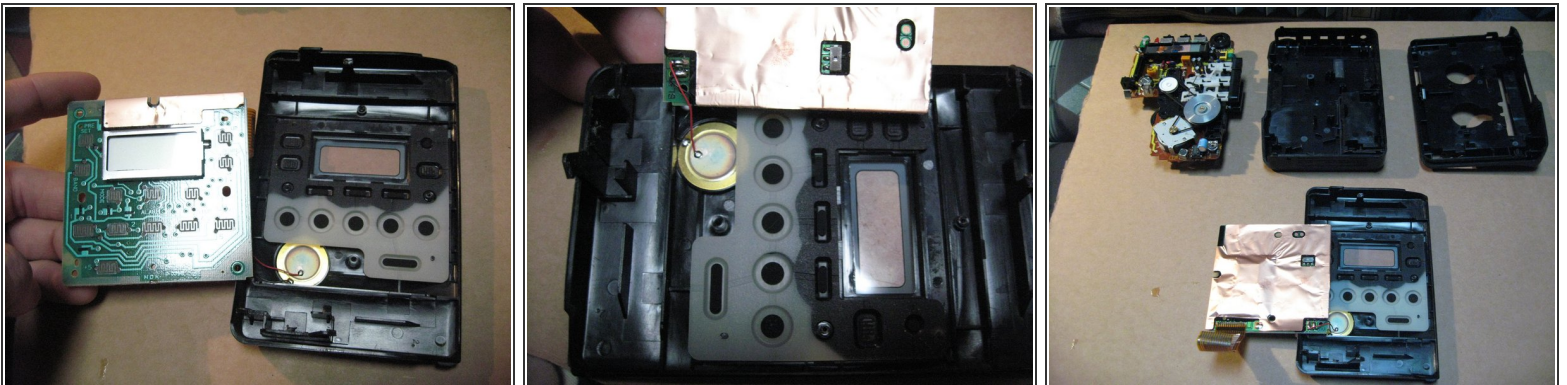
- Now gently pry the door hinges on either side off of their pivot point, and remove the front door from the assembly

步骤 9



- Remove three screws on backside of cassette door. Then remove panel.

步骤 10



- There is your front mounted control board! It is attached to what appears to be a speaker i'm guessing. Possibly for the alarm clock. I found that to be interesting, the little speaker thing. Anyways , thats it.

To reassemble your device, follow these instructions in reverse order.