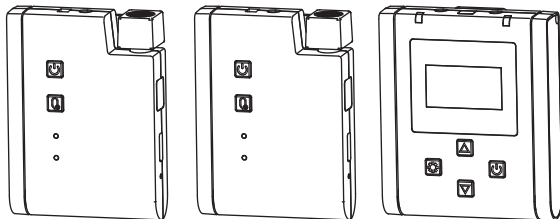


BoomX-U

Broadcasting-level Multi-functional Mini UHF Wireless Microphone



User Manual

Technology Parameters

Transmitter (TX)

| | |
|----------------------------|-------------------------|
| Channels | 48x2 |
| Group A Wireless Frequency | 568.125MHz ~ 579.875MHz |
| Group B Wireless Frequency | 580.125MHz ~ 591.875MHz |
| Transmitting Power | 15dBm |

Receiver (RX)

| | |
|----------------------------|-------------------------|
| Channels | 48x2 |
| Group A Wireless Frequency | 568.125MHz ~ 579.875MHz |
| Group B Wireless Frequency | 580.125MHz ~ 591.875MHz |

Foreword

Thanks for purchasing COMICA BoomX-U

Main Features

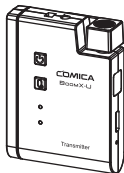
- . Portable Dual-channel UHF Wireless Microphone, Broadcast Level
- . Support Multi-receiver Monitoring & Shooting
- . Internal and External Mic Two Input Modes
- . 180° Foldable Antenna, 120m Transmission Distance
- . Support Screen Flip and Bilingual Selection
- . 48 Channels Used for Several Devices Working Together
- . Support Auto-scanning/Manual Channel-setting
- . LCF, M/S Switch, 16-level Adjusted Gain Control, Muting Functions
- . Real-time Visual Power and Audio Dynamic Monitor
- . Special Anti-loose Design for External Lavalier Mic
- . Colorful TFT Display, High Resolution
- . Designed with Multi-functional Belt Clip and Compact

Notice

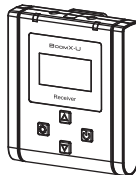
- ⚠ Please make sure the IR sensor are closely aligned when pairing
- ⚠ Don't block the antenna position to avoid any poor signal generated
- ⚠ Please attention that it can not realize STEREO function when in single channel mode
- ⚠ It is recommended to adjust the antenna of transmitter and receiver to appropriate angle for stable transmission and long working distance
- ⚠ It is recommended to keep a distance more than one meter between the two transmitters when using IR sync function, or it is easy to cause mismatching
- ⚠ This product belongs to high-precision instruments, please avoid falling, collision or pounding
- ⚠ Do not use the equipment in the vicinity of heat source or interference source, such as radiator, oven, refrigerator or air conditioner
- ⚠ If the pick-up distance is close or when used outdoors, please put on the wind muff to prevent sound burst or reduce wind noise
- ⚠ Do not use the equipment in rain or in a damp environment to avoid short-circuit danger
- ⚠ Please keep the product in a dry environment

Packing List

Main Parts:



Transmitter(TX)



Receiver (RX)

Purchase Options:



U1 = TX + RX



U2 = TX + TX + RX

Accessories:

- ① 3.5mm Lavalier Mic
- ② Wind Muff
- ③ 3.5mm TRS-TRRS Audio Cable
- ④ 3.5mm TRS-TRS Audio Cable
- ⑤ 3.5mm-XLR Audio Output Cable
- ⑥ USB A-USB C Charging Cable
- ⑦ Carry Case
- ⑧ User Manual
- ⑨ Warranty Card



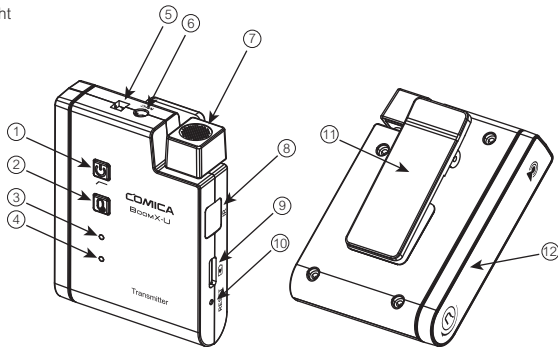
The accessories of each combination include :

U1= ①+②+③+④+⑤+⑥+⑦+⑧+⑨

U2= ①x2+②x2+③+④+⑤+⑥+⑦+⑧+⑨

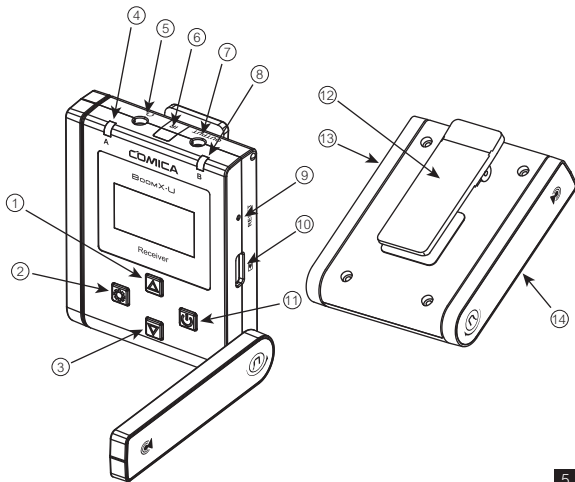
Transmitter (TX):

1. Power / Low Cut Filter Button
2. Muting Button
3. Power / Low Cut Filter Indicator Light
4. Audio Status Indicator Light
5. External Mic Locking Buckle
6. 3.5mm TRS Port of External Mic
7. Internal Mic
8. IR Sensor
9. USB-C Charging Port
10. Reset Hole
11. Belt Clip
12. Antenna



Receiver (RX)

1. Menu Function Button +
2. Function Setting Button
3. Menu Function Button -
4. Group A Working Status Indicator
5. 3.5mm TRS/TRRS Monitoring Port
6. IR Sensor
7. 3.5mm TRS Audio Output Port
8. Group B Working Status Indicator
9. Reset Hole
10. USB-C Charging Port
11. Power Button
12. Belt Clip
13. Group A Antenna
14. Group B Antenna

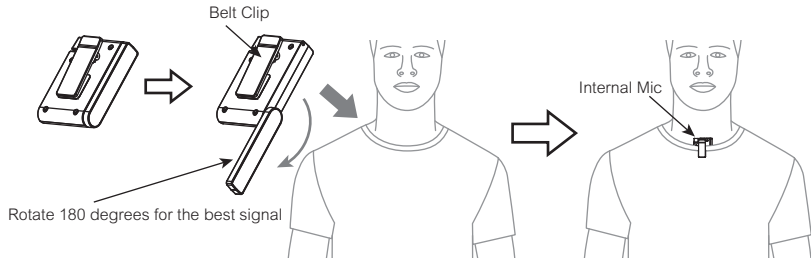


Installation

Transmitter (TX)

1. Use internal microphone :

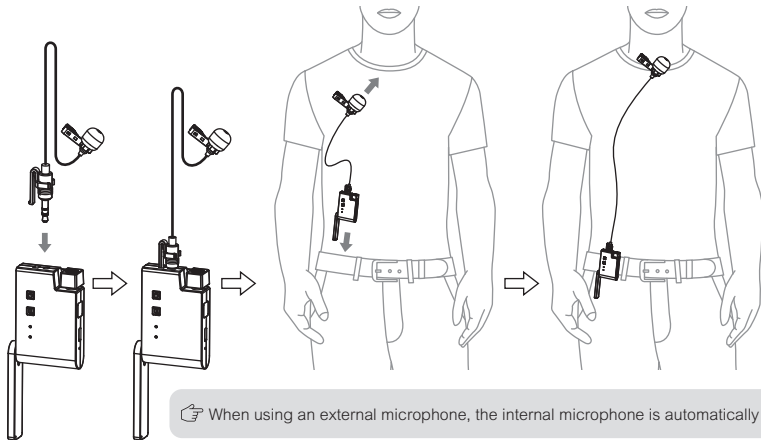
Adjust the antenna angle; Install the transmitter on the collar through the belt clip so that the internal microphone points in the direction of the sound source



☞ For better concealment during use, it is recommended that the belt clip be fixed and used outwards

2. Use external microphone:

Insert the 3.5mm TRS microphone input cable into the transmitter's 3.5mm TRS external microphone port and tighten it, then clip the transmitter to the belt through the belt clip and clip the lavalier microphone to your collar

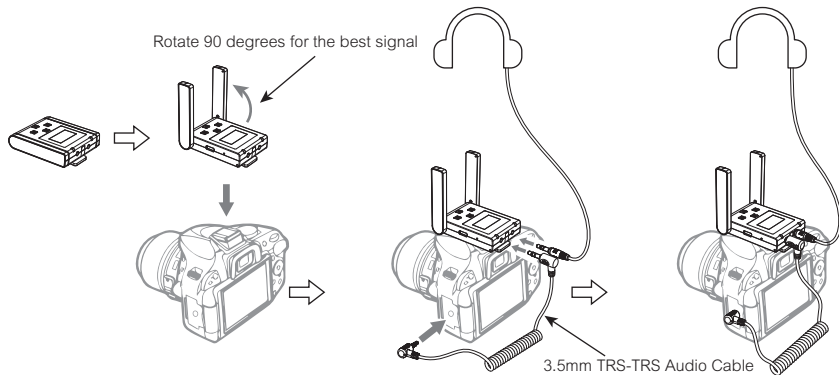


👉 When using an external microphone, the internal microphone is automatically turned off

Receiver (RX)

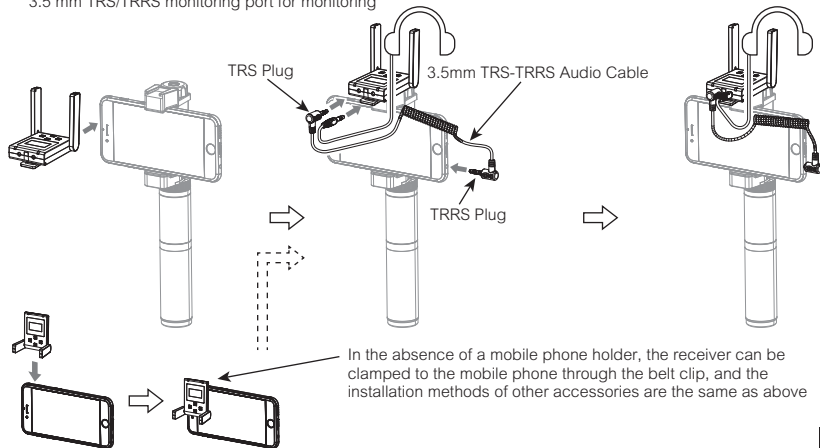
1. Work with Camera:

Adjust the antenna angle; Fix the receiver through the belt clip to the camera's hot shoe mount, then connect the receiver with camera through the 3.5mm TRS-TRS audio cable; Insert the headphone into the monitoring port for monitoring



2. Work with Smartphone:

Clip the receiver to the cold shoe mount through the belt clip; Connect the receiver with the mobile phone through the 3.5mm TRS-TRRS audio cable and pay attention to the access to the audio output jack of the receiver is the 3.5mm TRS plug, and the access to the mobile phone is the 3.5mm TRRS plug; Insert the headphone to the 3.5 mm TRS/TRRS monitoring port for monitoring



Transmitter (TX)

Function Introduction:

1. Power /Low Cut Filter Button

Long press for On/Off; Short press for Low Cut Filter



2. Muting Button

Long press to switch between normal recording and mute



3. Power /Low Cut Filter Indicator Light

Blue light keeps on after turn on the Transmitter; Purple light keeps on after turn on Low Cut Filter mode; Red light flicker when pairing transmitter and receiver or low power; Red light keeps on when charging



4. Audio Status Indicator Light

Blue light flicker when sound is input; Red light keeps on when sound is crackled or mute status



5. Reset Hole

If there is an abnormal phenomenon such as the device is crash or unable to turn on it, then insert the reset pin into the reset hole to reset it



6. Internal Mic

Turn the Mic to the sound source



7. 3.5mm TRS External Microphone Port

Insert the 3.5mm TRS microphone input cable, and you can use the external lavalier microphone for recording. At this time, the internal microphone of this device is automatically turned off



8. IR Sensor

It's paired successfully only when the receiver and transmitter's IR sensor are closely aligned



9. USB-C Charging Port

Connect the transmitter with the 5V power through the USB A-USB C charging cable to charge



Receiver (RX)

Receiver (RX) Function Introduction:

1. Power Button

Long press for On/Off; Short press on the function menu interface to exit the current interface



2. SET Function Button

Short Press can enter the setting display page, then adjust the related function



3. Function Selection Button +

Short Press for function adjustment (+)



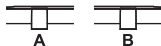
4. Function Selection Button -

Short Press for function adjustment (-)



5. Group A/B Working Status Indicator

Indicator light is off when unpaired; Blue light keeps on after paired successfully;
Red light flicker when low power; Red light keeps on when charging



6. 3.5mm TRS Audio Output Port

Connect with mobile phone through the 3.5mm TRS-TRRS audio cable; Connect with camera through the 3.5mm TRS-TRS audio cable



7. IR Sensor

It's paired successfully only when the receiver and transmitter's IR sensor are closely aligned



8. 3.5mm TRS/TRRS Monitoring Port

Insert headphone to monitor



9. Screen Flip Function

You can flip the screen 180 degrees to use according to different scenes

| |
|-------------|
| Menu |
| Screen Flip |
| Off |

(Normal Display)

| |
|-------------|
| Menu |
| Screen Flip |
| On |

(After Screen Flips 180 Degrees)

10. Reset Hole

If there is an abnormal phenomenon such as the device is crash or unable to turn on it, then insert the reset pin into the reset hole to reset it

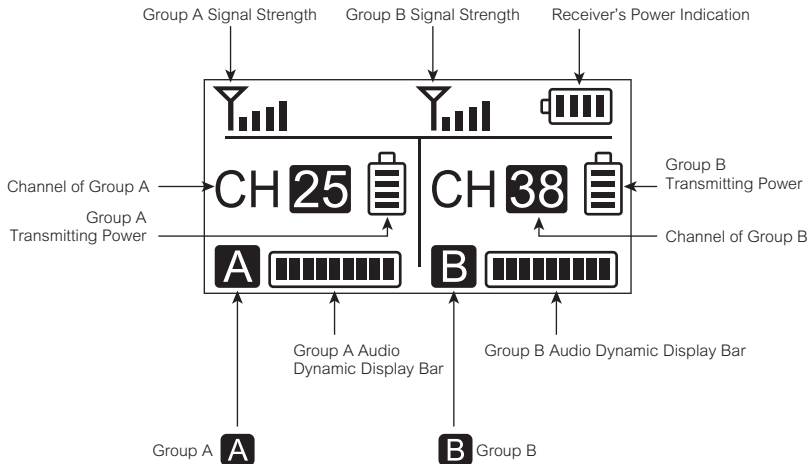


11. USB-C Charging Port

Connect the receiver with the 5V power through the USB A-USB C charging cable to charge




Receiver (RX) Screen Display Instruction:



Receiver (RX) Operation Instruction:

1. Auto Pairing of Group A/B

1.1 Short press  button to "setting" display page; press   button to Auto Pair mode of Group A or Group B

| Menu |
|---------------|
| Group A |
| Auto Pair Yes |

| Menu |
|---------------|
| Group B |
| Auto Pair Yes |

1.2 Short press  button for adjustment, press   button to select whether or not pairing, then short press  to confirm. It will show "Paired CHXX" to prompt the channel of Paired after successful pairing; it will show "Fail" after unsuccessful pairing

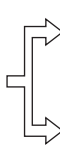
| Menu |
|---------------|
| Group Setting |
| Auto Pair No |



| Menu |
|---------------|
| Group Setting |
| Auto Pair Yes |



| Menu |
|-----------------|
| Group Setting |
| Auto Pairing... |



| Menu |
|---------------|
| Group Setting |
| Paired CHXX |

Successful
Pairing

| Menu |
|---------------|
| Group Setting |
| Fail! |

Failed
Pairing



Please turn on the transmitter and make sure the IR sensor are closely aligned when pairing or it may cause failed pairing

1.3 Short press  button to back to home screen (The operation methods for other interfaces are the same as above)

2. Manual Pairing of Group A/B

Short press  button to "setting" display page, use   button to manually adjust the channel of A/B Group, short press  button for adjustment, then use   button to select the channel, short press  button to confirm and complete the pair

| | |
|--------------|--------------|
| Menu | Menu |
| Group A | Group B |
| Manu Pair 12 | Manu Pair 08 |

3. Volume Adjustment

Group A/B Volume Adjustment

| |
|-----------|
| Menu |
| Group A |
| Volume 12 |

4. 'Stereo/Mono' Mode Adjustment

A channel is the left channel and B channel is the right channel in Stereo Mode. Please attention that it can not realize STEREO function when in single channel mode

| |
|-------------|
| Menu |
| Output Mode |
| Stereo |

| |
|-------------|
| Menu |
| Output Mode |
| Mono |

5. Screen Flip Function

You can flip the screen 180 degrees to use according to different scenes

| |
|-------------|
| Menu |
| Screen Flip |
| Off |

 (Normal Display)

| |
|-------------|
| On |
| Screen Flip |
| Menu |

 (After Screen Flips 180 Degrees)

6. System Language

In the system language menu, select the corresponding language

| |
|----------|
| Menu |
| Language |
| English |

| |
|----------|
| Menu |
| Language |
| 简体中文 |

7. Version

Check the current version

| |
|---------|
| Menu |
| Version |
| X.X.X |

Pairing Method

Dual-Channel Mode:

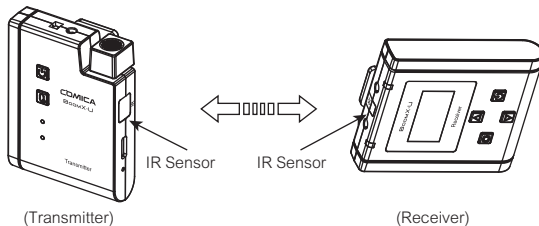
1. Set the display page to A/B Group Pairing

| |
|----------|
| Menu |
| Group A |
| Pair Yes |

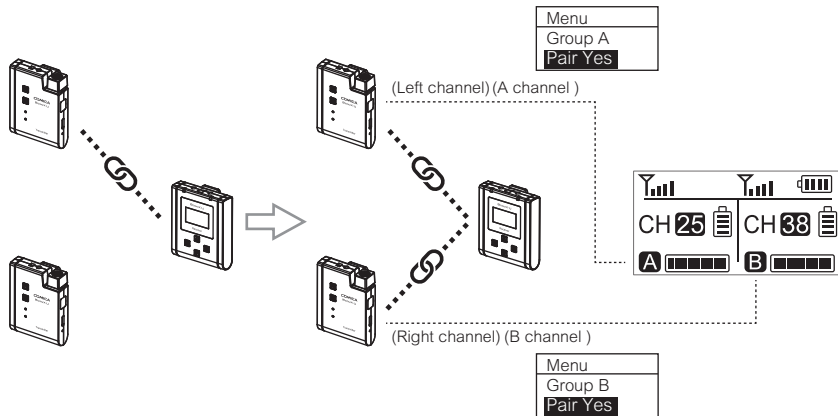
or

| |
|----------|
| Menu |
| Group B |
| Pair Yes |

2. Keep the receiver and transmitter's IR sensor are closely aligned before pairing



3. Use the pairing function to pair the two transmitters respectively for the A/B Group



Specifications

Transmitter (TX)

| | |
|------------------------------|----------------------------|
| Antenna | PCB Antenna |
| Polar Pattern | Omnidirectional |
| Frequency Response | 80Hz ~ 20kHz |
| Sound Pressure Level | 100dB |
| Signal/Noise | 75dB |
| Equivalent Noise | 19dBA |
| Dynamic Range | 81dB |
| Sound Delay | <20ms |
| External Mic Input Interface | 3.5mm TRS |
| Battery | Li-ion Battery 600mAh 3.7V |
| Battery Life | 5 Hours |
| Net Weight | 47g |
| Dimension | 49 x 22 x 66mm |
| Operating Temperature | 0℃ ~ 50℃ |
| Storage Temperature | -20℃ ~ 60℃ |

Receiver (RX)

| | |
|------------------------|----------------------------|
| Antenna | PCB Antenna |
| Receiving Sensitivity | -90dBm |
| Signal/Noise | 75dB |
| Equivalent Noise | 19dBA |
| Dynamic Range | 81dB |
| Sound Delay | <20ms |
| Audio Output Interface | 3.5mm TRS |
| Monitor Interface | 3.5mm TRS/TRRS |
| Battery | Li-ion Battery 600mAh 3.7V |
| Battery Life | 5 Hours |
| Net Weight | 55g |
| Dimension | 56 x 22 x 66mm |
| Operating Temperature | 0℃ ~ 50℃ |
| Storage Temperature | -20℃ ~ 60℃ |



Website: comica-audio.com

Facebook: Comica Audio Tech Global

Instagram: Comica Audio

YouTube: Comica Audio

The COMICA LOGO is a trademark which is registered and owned by Commlite Technology Co.,Ltd

Email: support@comica-audio.com