



# NIKKOR

## **NIKKOR Z 35mm f/1.4**

### Repair Manual

# Table of Contents

<b>Introduction</b>	<b>1</b>
Important Information .....	1
Notations used in this Repair Manual .....	2
Safety precautions .....	4
Disclaimer of warranties and limitation of damages .....	6
Notification .....	6
<b>Service tools</b>	<b>7</b>
Nikon service tools .....	7
Standard service tools .....	7
<b>Illustrated Service Parts List</b>	<b>8</b>
<b>Parts Removal and Replacement Procedures</b>	<b>11</b>
Before disassembling the Product .....	11
During the repairing .....	11
Reference Pages for Replacement Procedures by Major Parts .....	12
Disassembly .....	13
FRONT LABEL UNIT .....	13
FILTER RING .....	13
MF RUBBER RING .....	14
MF RING UNIT .....	14
REAR COVER RING .....	15
MOUNT .....	15
NAME RING UNIT .....	16
MAIN PCB UNIT .....	17
CONTROL RING UNIT .....	17
MIDDLE RING UNIT .....	18
Assembly .....	19
MIDDLE RING UNIT .....	19
CONTROL RING UNIT .....	20
MAIN PCB UNIT .....	21
NAME RING UNIT .....	21
MOUNT .....	22
REAR COVER RING .....	23
MF RING UNIT .....	24
MF RUBBER RING .....	25

FILTER RING ..... 25

FRONT LABEL UNIT ..... 26

**AF Accuracy Inspection Process** **27**

---

AF accuracy inspection ..... 29

**Control Ring Inspection Process** **31**

---

Control ring inspection..... 31

**MF Ring Inspection Process** **33**

---

MF ring inspection ..... 33

# Introduction

## Important Information

- For purposes of this Repair Manual, "Nikon" means Nikon Corporation, and all direct and indirect affiliated companies, including without limitation, Nikon Inc.
- This Repair Manual is solely intended for Nikon products imported into and sold in the United States by Nikon Inc.
- This Repair Manual includes technical instructions for replacing Nikon parts for the above-mentioned product (the "Product") and is intended for individuals with the knowledge, experience, and tools required to repair electronic devices. Read this entire Repair Manual first. If you are not comfortable performing the repairs as instructed in this Repair Manual, do not proceed.
- Please note that, if you repair the Product on your own, we will not provide customer support or assistance regarding this Repair Manual or how to repair the Product. Please note that an incorrect repair may affect the Product's limited warranty and/or cause an increase in the fee if you request service from an authorized Nikon service center if you have repaired the Product on your own. This Repair Manual is subject to revision without notice.
- Failure to follow the repair instructions or to use appropriate Nikon parts or tools may cause fire or other safety issues and lead to personal injury or death. Failure to follow the repair instructions or to use appropriate parts or tools may damage the Product or other property, or compromise the Product's functionality or water resistance (if applicable).
- NIKON SHALL NOT BE LIABLE FOR ANY DAMAGES, INJURIES OR OTHER LIABILITIES TO THE PRODUCT, OR ANY PERSON, OR PROPERTY WHICH OCCURS AS A RESULT OF REPAIR, DIAGNOSIS, MAINTENANCE, OR MODIFICATION PERFORMED BY YOU OR AN UNAUTHORIZED REPAIR PROVIDER, INCLUDING BUT NOT LIMITED TO, ANY INDIRECT, INCIDENTAL, SPECIAL OR CONSEQUENTIAL DAMAGES; ANY LOSS OF DATA, PRIVACY OR PROFITS; OR ANY INABILITY TO USE, OR REDUCED FUNCTIONALITY OF, THE PRODUCT.



## Notations used in this Repair Manual

In this guide, important information is indicated by the following icons.



### **WARNING**

This indicates that improper use by ignoring the contents described herein can result in potential death or serious injury.



### **CAUTION**

This indicates that improper use by ignoring the contents described herein can result in potential injury or material loss.

### **IMPORTANT**

This symbol indicates important information in this manual.

## Product identification information

The NIKKOR Z 35mm f/1.4 serial number is written on the opposite side of the Product name as illustrated below.

Product name



Product name side

Serial number



Serial number side



### **CAUTION**

- The serial number may be required when you contact Nikon with regards to the Product. Make sure not to lose the serial numbered part of the Product.

## **Read this first**

- No part of this Repair Manual may be reproduced, transmitted, transcribed, stored in a retrieval system, or translated into any language in any form, by any means, without Nikon's prior written permission.
- Illustrations shown in this Repair Manual may differ from the actual Product.
- Nikon is not responsible for any errors this Repair Manual may contain.
- The appearance, specifications, and capabilities of this Product and parts are subject to change without notice.

## **About controls for radio interference**

- This device complies with Part 15 of the FCC Rules. Operation is subject to the following two conditions:
  - (1) This device may not cause harmful interference, and
  - (2) This device must accept any interference received, including interference that may cause undesired operation.
- This equipment has been tested and found to comply with the limits for a Class B digital device, pursuant to Part 15 of the FCC Rules and to EU EMC directive. These limits are designed to provide reasonable protection against harmful interference in a residential installation. This equipment generates, uses and can radiate radio frequency energy and, if not installed and used in accordance with the instructions, may cause harmful interference to radio communications. However, there is no guarantee that interference will not occur in a particular installation. If this equipment does cause harmful interference to radio or television reception, which can be determined by turning the equipment off and on, the user is encouraged to try to correct the interference by one or more of the following measures:
  - Reorient or relocate the receiving antenna.
  - Increase the separation between the equipment and receiver.
  - Consult the dealer or an experienced radio/TV technician for help.

# Safety precautions

Strictly observe the guidelines contained in this Repair Manual in order to use this Product safely and prevent possible injury or property damage to you and others. Understand the contents thoroughly for correct use of the Product.

## General safety precautions

Always observe the following general safety precautions.

- If you disassemble or repair the Product, it may involve risks of electric shock, Product damage, fire, and/or personal injury, or other hazards. Be careful when disassembling or repairing the Product as described in this Repair Manual.
- If you disassemble or repair the Product, the flange back or the back focus may shift, which may affect the focus when shooting. Check the focus position before disassembling or repairing the Product. Then, ensure that the focus position has not changed after re-assembling the Product. If the focus changes after re-assembling the Product, we recommend that you disassemble and repair the Product again.
- If the Product is dropped or has been subjected to an impact due to dropping, or weight or stress has been placed on it, the camera and lens attachment parts may become deformed, which will prevent the Product from being able to be attached and will cause problems when shooting. In such cases, accurate adjustments and repair will be required and it is recommended that you contact Nikon for service repairs.
- If the Product contains a lithium-ion battery, then inappropriate use, transportation, recycling, re-use, or disposal of the lithium-ion battery may cause a fire, explosion or other damage or injury. Lithium-ion batteries should be handled in accordance with local laws, rules, and regulations. Do not heat, create holes in, disassemble, or incinerate the Product or the lithium-ion battery. Do not leave the Product or the lithium-ion battery in direct sunlight or other hot places for long periods of time, and do not charge the Product in such an environment as doing so may damage the lithium-ion battery or cause it to melt, which may cause a fire, explosion or other damage or injury.
- Do not dispose of your old Product or its lithium-ion battery (if any) and the replaced parts in your household trash or recycling bin. When disposing of the lithium-ion battery, follow your local area laws, rules, and regulations.

## **Repair-specific precautions and warnings**

- As for the Product powered on by the power switch, before disassembling the Product, ensure that the Product is powered off and that the battery has been removed.
- As a safety measure, we recommend that you wear protective eyewear when disassembling or reassembling the Product.
- Always check the following points before and while disassembling the Product.
  - Wear an anti-static wrist strap.
  - The work area is appropriately grounded, and an environment in which electrostatic discharge (ESD) has been provided with safety measures is ensured.
- Before starting work, check that you are following the general guidelines and ESD compliance steps. For details, refer to "Before disassembling the Product" on page 11.
- When removing any parts from the Product, place all the attached parts and screws away from the work area to prevent the Product and parts from being damaged or lost.

## **Safety policy and procedure**

- All Product safety issues must be managed according to the following points.

If any of the following conditions are visible, stop repairing the Product and contact Nikon's customer service at [www.nikonproductsupport.com](http://www.nikonproductsupport.com).

  - There are burnt or melted components or traces on the outside of the Product, or other heat-related damage (including scorching on charging terminals or other connection terminals).
  - The Product has burnt or melted parts or traces on the inside, or contains damage from overheating.
  - Products that appear to have problems such as having been forcibly detached or disassembled for reasons other than misuse by the user or unauthorized repair (those that have been damaged by being subjected to an impact due to dropping, those that have evidence of tampering, or those with damage or separation caused by dilatation of the battery).
  - Plastic parts with sharp edges that may pose an injury risk to the user.
- When contacting Nikon's customer service, please have the following information ready to enable us to check the situation:
  - Model, model number, and serial number of the affected Nikon Product and any third-party product used together with the Nikon Product, if any.
  - Description of the damage found.
  - Clear photos that show the damage.

## Disclaimer of warranties and limitation of damages

- All the information, descriptions, materials, and products provided on or in connection with this Repair Manual are provided by Nikon on an "as-is basis" and "in the form that can only be provided if possible" unless otherwise expressly specified in writing by Nikon. With respect to the information, descriptions, materials, and products included in this Repair Manual, that accompany this Repair Manual, or that are provided to users in some way, Nikon makes no, and hereby disclaims all, representations, unless expressly specified in writing. You hereby expressly agree that your use of the information, descriptions, materials, and products included in this Repair Manual or that accompany this Repair Manual are the user's sole responsibility. If you are not in agreement with the foregoing, do not use this Repair Manual.
- To the maximum extent allowed by applicable law, Nikon disclaims all warranties, express or implied. This includes the implied warranties of the merchantability and fitness for a particular purpose, but shall not be limited to these. To the maximum extent allowed by applicable law, Nikon disclaims and shall not be responsible for any damage that may arise through the use of any information, descriptions, materials, or products obtained from this Repair Manual or in connection with this Repair Manual. This includes direct, indirect, incidental, special, consequential, and/or punitive damages, but shall not be limited to these.

SOME STATES DO NOT ALLOW (A) LIMITATIONS ON HOW LONG AN IMPLIED WARRANTY LASTS OR (B) THE EXCLUSION OR LIMITATION OF INCIDENTAL OR CONSEQUENTIAL DAMAGES, SO THE ABOVE LIMITATIONS OR EXCLUSIONS MAY NOT APPLY TO YOU.

## Notification

- Nikon and its suppliers may have patents, patent applications, trademarks, copyrights, and/or other intellectual property and/or proprietary rights regarding the subject matter in this Repair Manual (collectively, "Intellectual Property Rights"). By making this Repair Manual available to you, Nikon does not grant any Intellectual Property Rights and does not imply a license. When the user uses the Intellectual Property Rights with permission, it is only subject to Nikon's and its suppliers' Intellectual Property Rights.

This Repair Manual and the information contained herein are subject to change without notice.

©2024 Nikon Corporation. All rights reserved.

# Service tools

This section shows the tools used to repair products. The standard service tools are commercially available and can be purchased from third party retailers. Nikon hereby disclaims all responsibility and liability for any tools or other items purchased from third party retailers.

## Nikon service tools

- Cleaning stick (EIZ0163)
- Lubricant (PL-1016EL)
- Lubricant (LEN317A)
- Lubricant (FT-900P)
- Lubricant (OS-20P)
- Lubricant (FG-3X)
- Lubricant (MDF-225P)

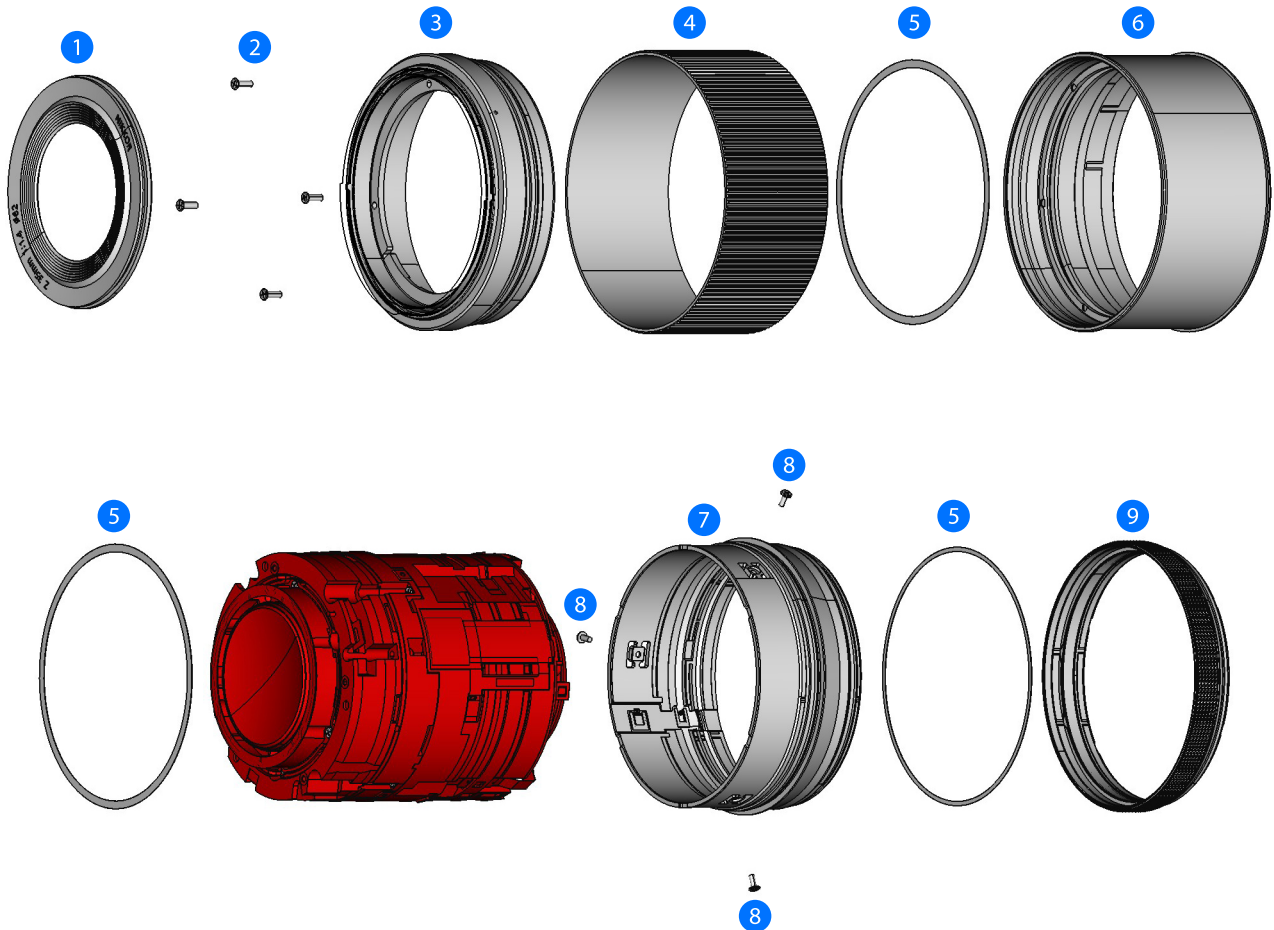
## Standard service tools

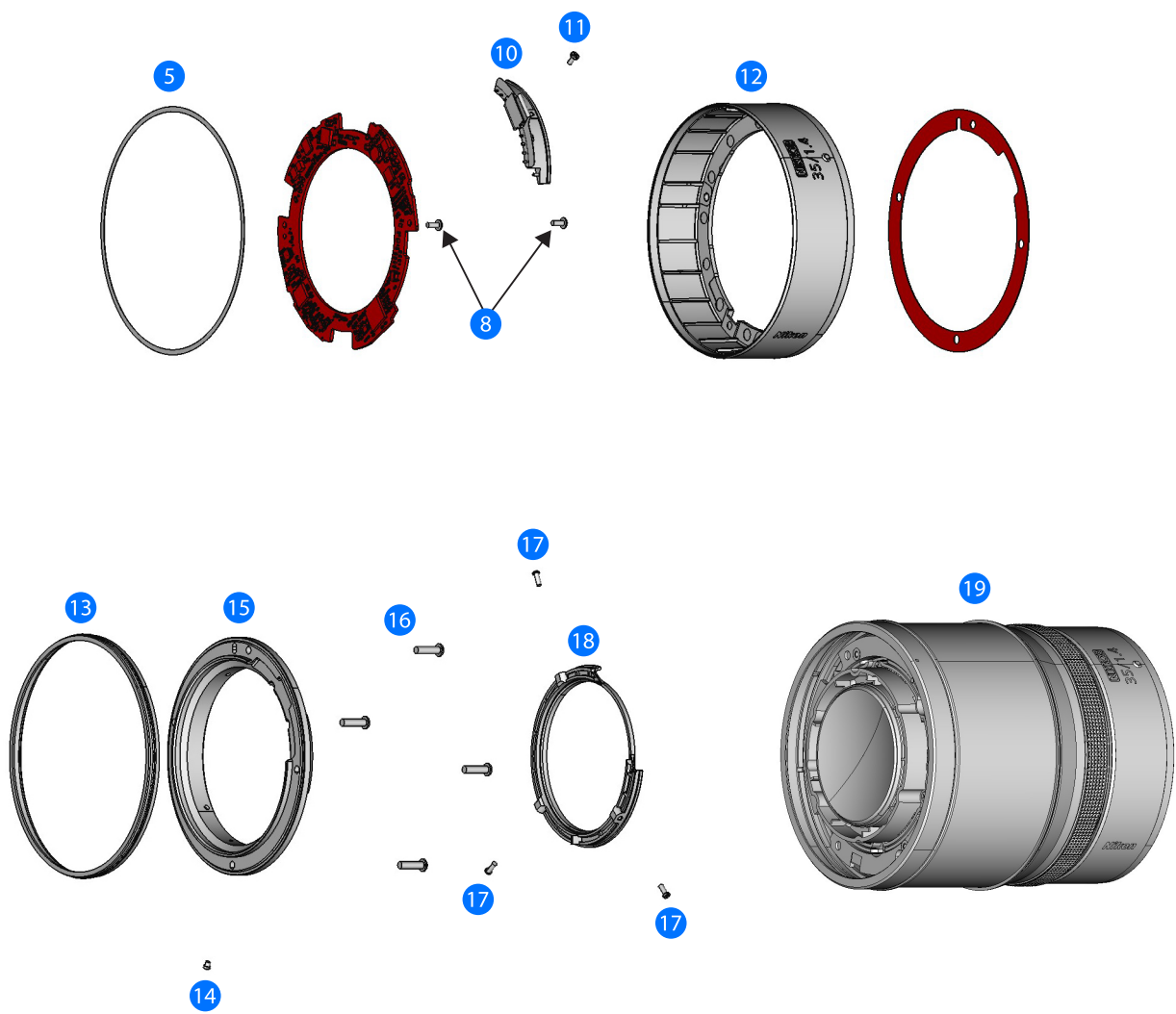
- Electrostatic discharge (ESD) mat
- Anti-ESD wrist strap (1 MΩ resistance)
- Anti-ESD gloves
- Protective eyewear
- Isopropyl alcohol
- Isopropyl alcohol dispenser bottle
- Anti-ESD tweezers
- Phillips screwdriver (2.0 mm)
- Small flathead screwdriver
- Small pry bar (plastic)
- Torque screwdriver (Use a product with a torque range of 0.06 N·m to 0.18 N·m.)
- Brush for lubricant
- Front cap (LC-67B)
- Rear cap (LF-N1)
- Glue (LOCTITE 263)

# Illustrated Service Parts List

## IMPORTANT

- The parts marked in red in the illustration cannot be replaced individually as replacing them will affect the optical performance. If you need to replace these parts, use the No.19 LENS UNIT (JMA11251-0950).
- When disassembling and reassembling the Product, be careful not to damage or lose the parts.







No.	Item code	Parts name	Q'ty
1	JMA11251-0241	FRONT LABEL UNIT	1
2	9747-1750-07	SCREW	4
3	JMA11251-0251	FILTER RING	1
4	JMA11251-1431	MF RUBBER RING	1
5	JMA11251-1510	WASHER	0 to 1
5	JMA11251-1511	WASHER	0 to 1
5	JMA11251-1512	WASHER	0 to 1
6	JMA11251-0236	MF RING UNIT	1
7	JMA11251-0238	MIDDLE RING UNIT	1
8	9747-1435-07	SCREW	5
9	JMA11251-0903	CONTROL RING UNIT	1
10	JMA11251-0640	CONTACT UNIT	1
11	6A-14030FA	SCREW	1
12	JMA11251-0902	NAME RING UNIT	1
13	127FD	WATERPROOF RUBBER	1
14	1K120-012	SCREW	1
15	127EC	MOUNT	1
16	JMA72251-1496	SCREW	4
17	9761-1435-04	SCREW	3
18	JMA11251-1242	REAR COVER RING	1
19	JMA11251-0950	LENS UNIT	1

# Parts Removal and Replacement Procedures

## Before disassembling the Product

### IMPORTANT

- As for the Product powered on by the power switch, before disassembling the Product, be sure to check that the Product is powered off and that the battery has been removed.
- Check that all the lenses, camera, and accessories attached to the Product are removed before disassembling the Product.
- Always cover the workbench's surface with a soft, non-scratch material suitable for ESD protection.
- Frequently clean the surfaces you use to work and keep them free of debris/abrasive particles.
- Always follow the work steps described in each process section.

## During the repairing

### IMPORTANT

- If there is this kind of indication, apply the specified grease or adhesive by a small brush.  
Example: **MDF-1173S**, **AX-125**
- If there is a specified torque, use an appropriate torque driver for tightening screw.  
Example: 0.1 N·m
- If the parts are associated with circled numbers, please work in that numerical order.  
Example: ① ② ③ means to work in the order of ① to ③.
- Do not pinch FPCs or cords during reassembly.
- Be careful not to damage or lose parts.

## Reference Pages for Replacement Procedures by Major Parts

### MF RING UNIT replacement procedure

Disassembly	P. 13 - P. 14
Assembly	P. 24 - P. 26

### MOUNT replacement procedure

Disassembly	P. 15 - P. 16
Assembly	P. 22 - P. 23

### CONTROL RING UNIT replacement procedure

Disassembly	P. 15 - P. 17
Assembly	P. 20 - P. 23

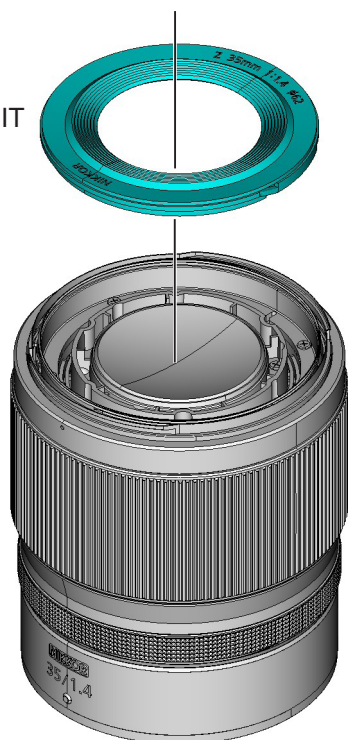
### LENS UNIT replacement procedure

Disassembly	P. 13 - P. 15
Assembly	P. 23, P. 25 - P. 26

# Disassembly

## FRONT LABEL UNIT

FRONT LABEL UNIT  
(JMA11251-0241)

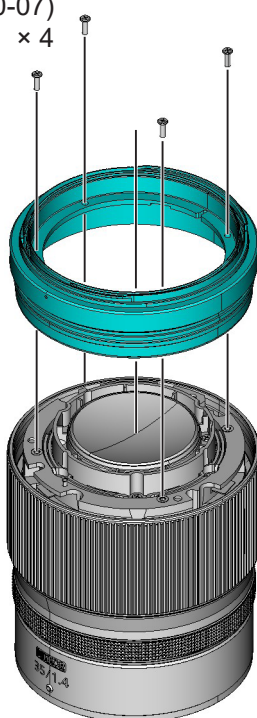


- Insert a small flathead screwdriver or plastic pry bar into the gap between the edges of the FRONT LABEL UNIT, and lift the FRONT LABEL UNIT.
- If it is difficult to peel it off, apply isopropyl alcohol into the gap around the outer periphery.

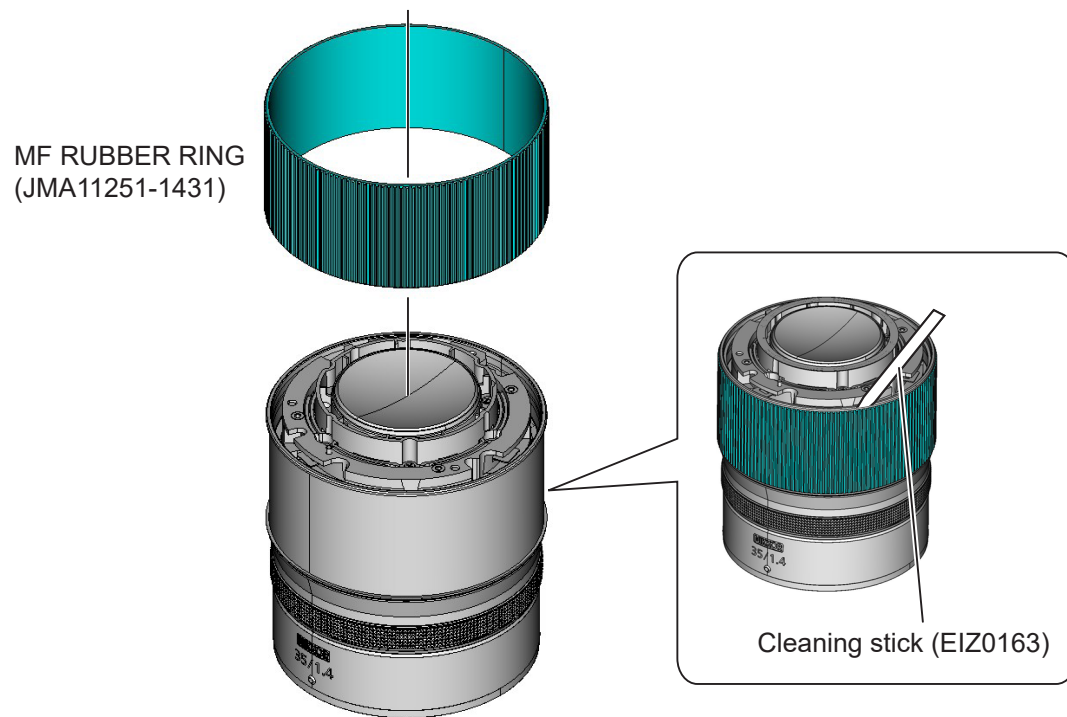
## FILTER RING

SCREW (9747-1750-07)  
× 4

FILTER RING  
(JMA11251-0251)



## MF RUBBER RING



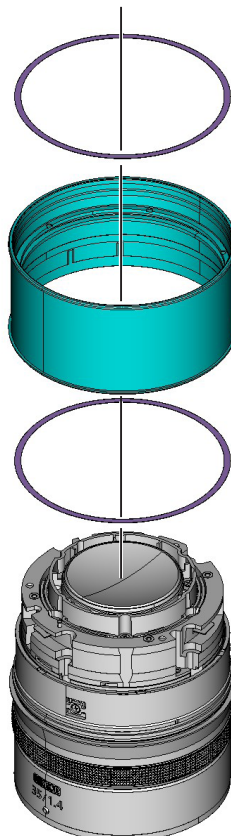
## MF RING UNIT

WASHER (Contains a  
WASHER with one of the  
following item codes.)

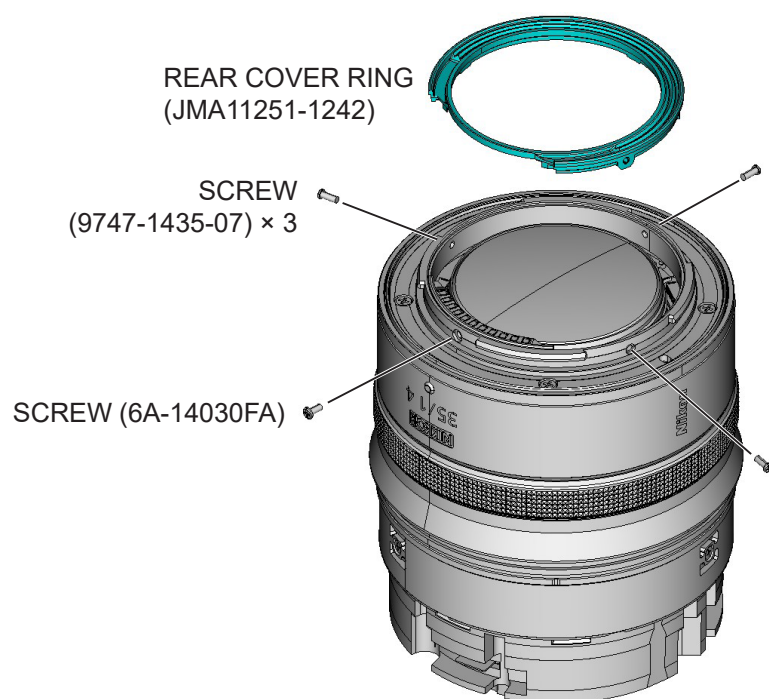
MF RING UNIT  
(JMA11251-0236)

WASHER (Contains a  
WASHER with one of the  
following item codes.)

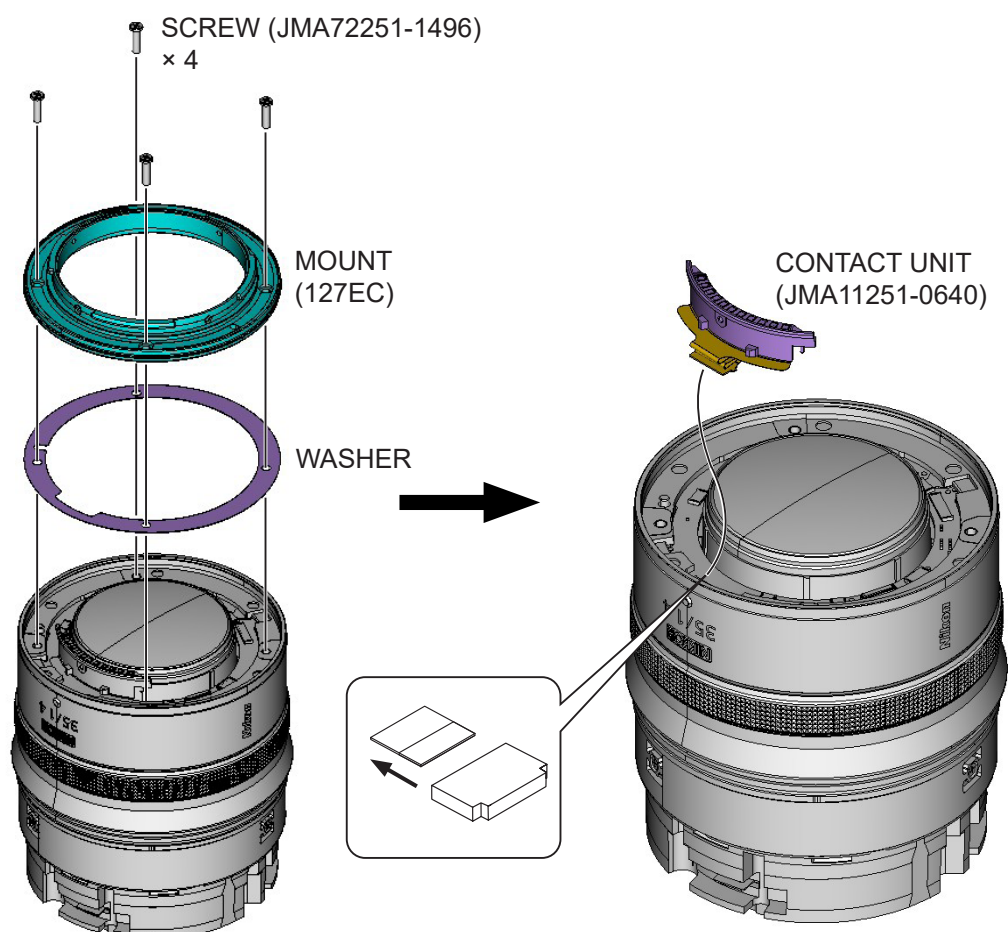
Item code	Parts name
JMA11251-1510	WASHER
JMA11251-1511	WASHER
JMA11251-1512	WASHER



## REAR COVER RING



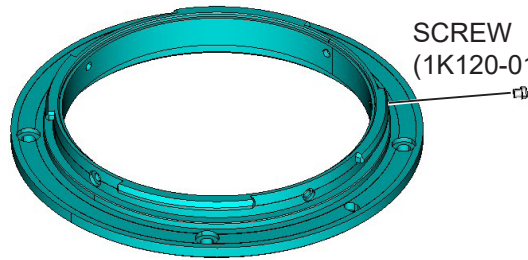
## MOUNT



MOUNT  
(127EC)

SCREW  
(1K120-012)

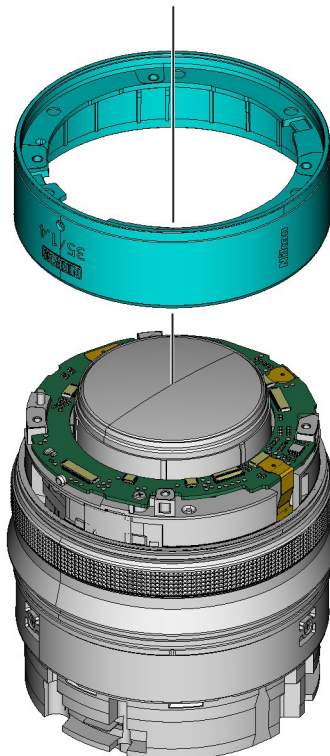
WATERPROOF  
RUBBER  
(127FD)



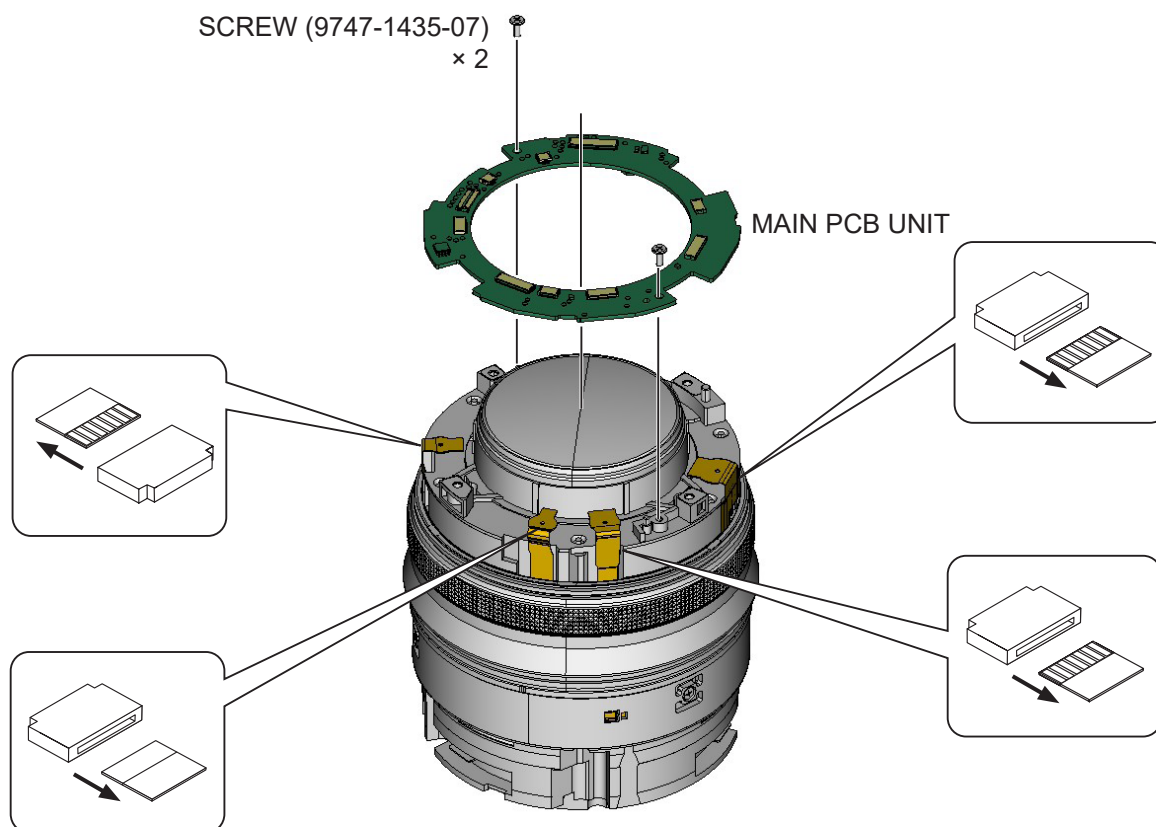
---

NAME RING UNIT

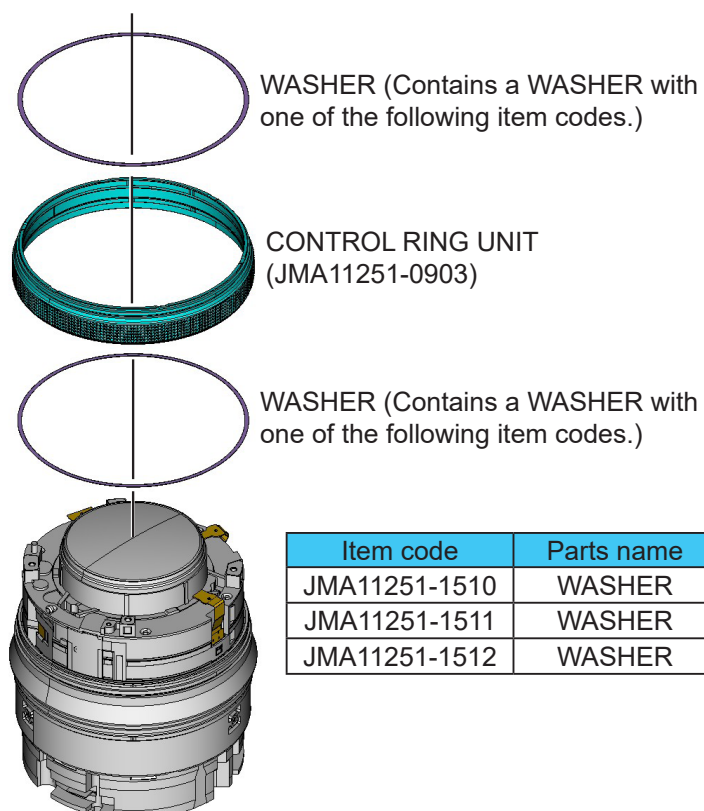
NAME RING UNIT  
(JMA11251-0902)



## MAIN PCB UNIT

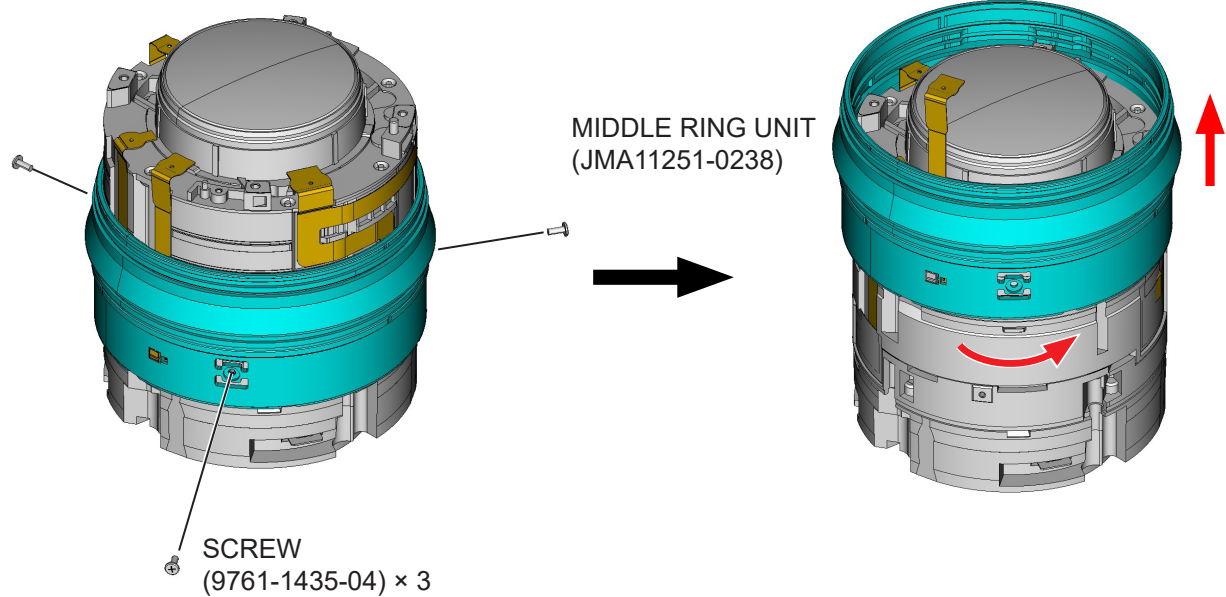


## CONTROL RING UNIT



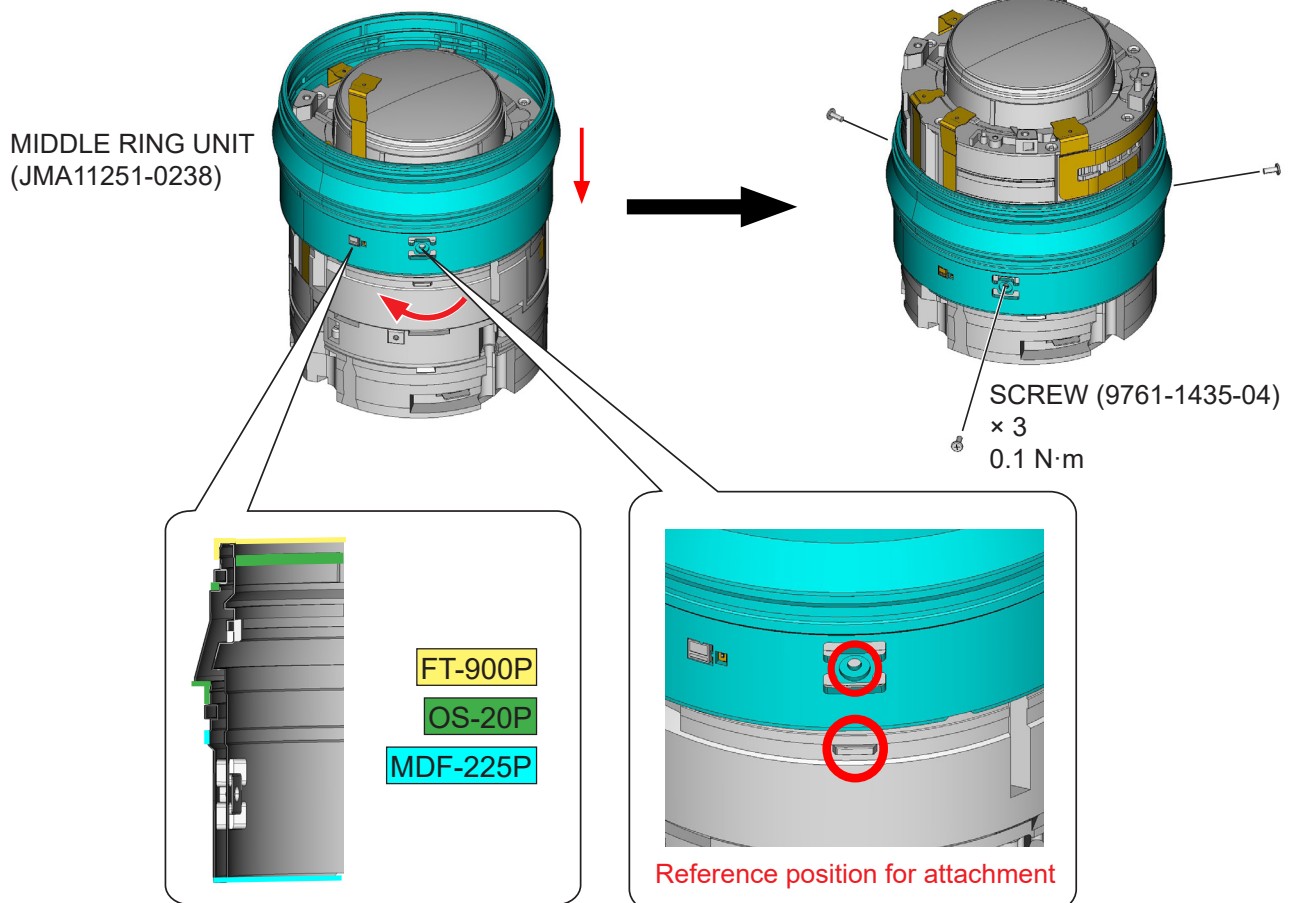


MIDDLE RING UNIT

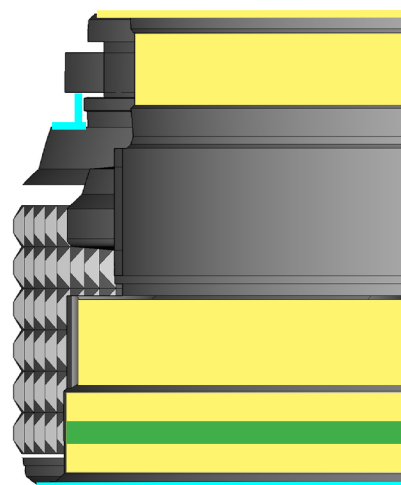
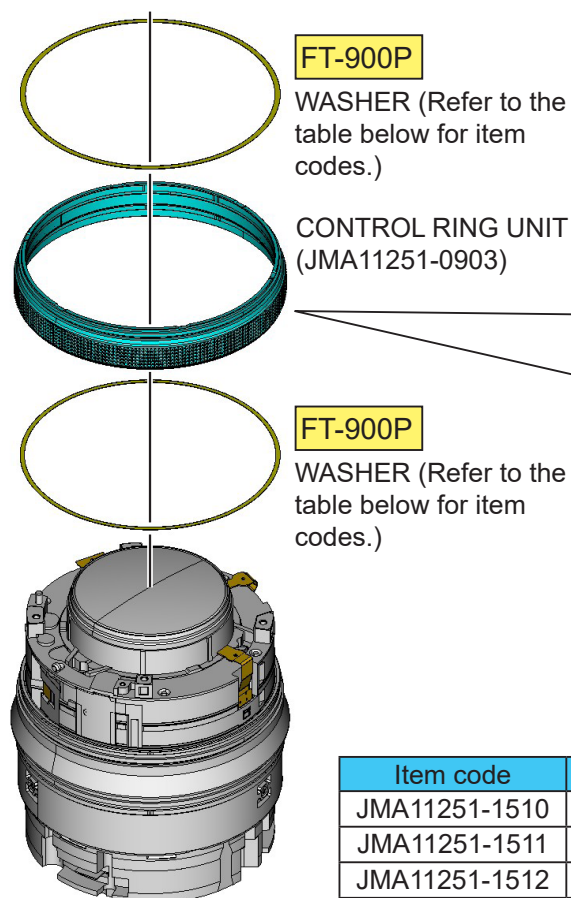


# Assembly

## MIDDLE RING UNIT



## CONTROL RING UNIT



Apply in order from top

**OS-20P**

**FT-900P**

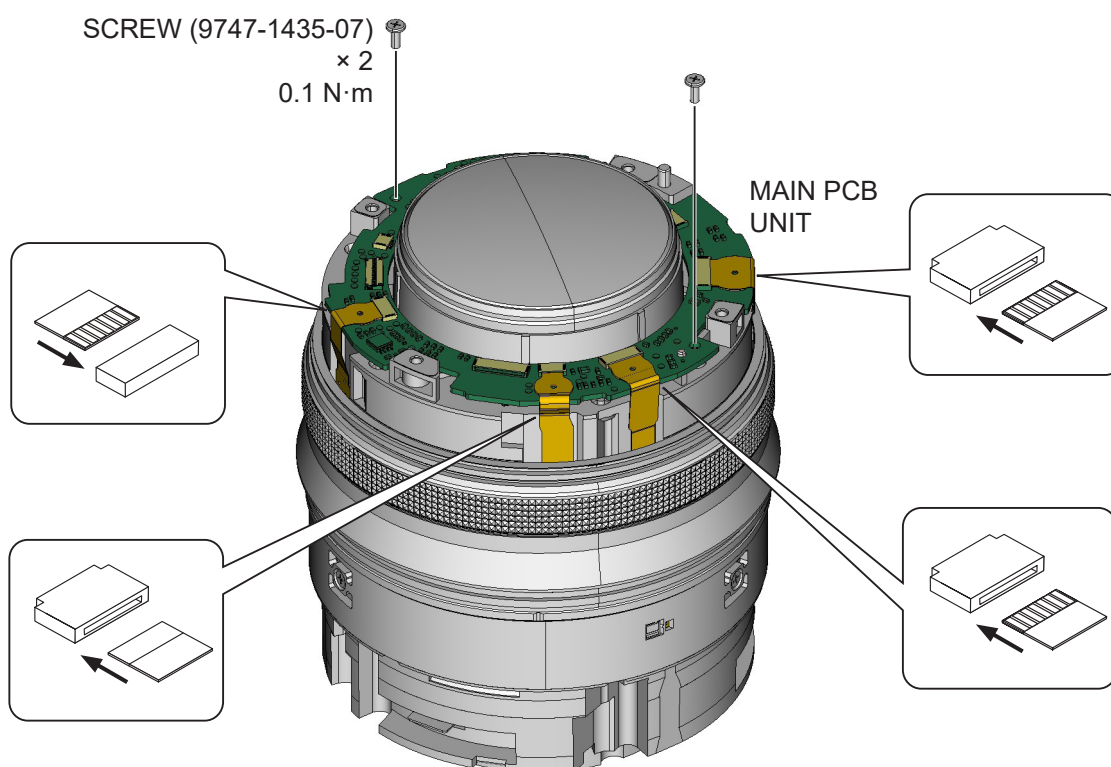
**FG-3X**

Item code	Parts name	Thickness *
JMA11251-1510	WASHER	A
JMA11251-1511	WASHER	B
JMA11251-1512	WASHER	C

\* Thickness increases in order from A (thinnest) to C (thickest).

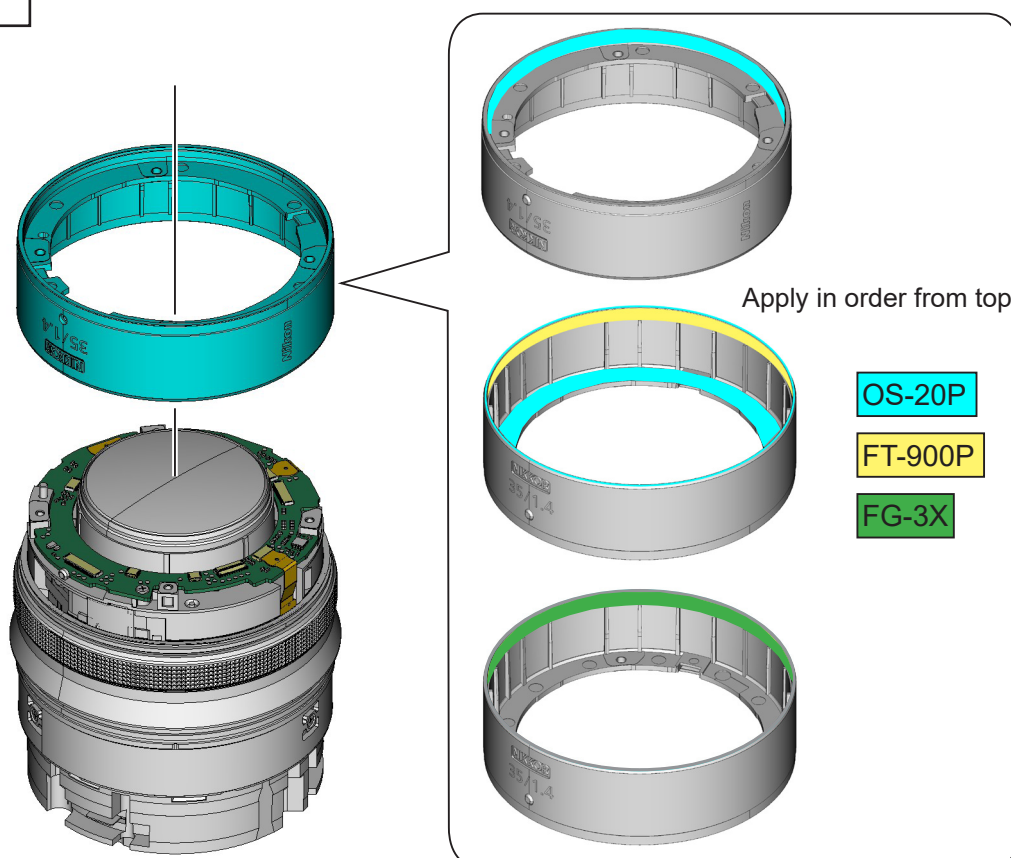
- If you replace the CONTROL RING UNIT, you will need to adjust the WASHER size. To adjust the operation after assembling, use intermediate-size WASHER (JMA11251-1511) when assembling.
- When replacing the WASHER, select one that does not cause backlash.
- There is 1 or  $n$  item(s) in this part.

## MAIN PCB UNIT



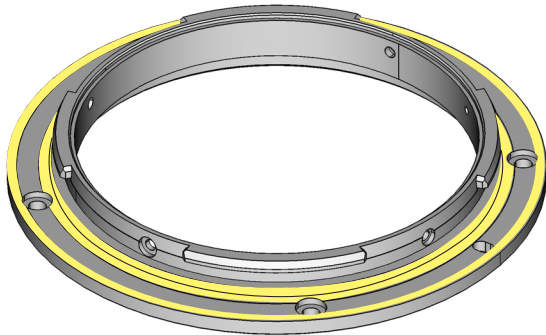
## NAME RING UNIT

NAME RING UNIT  
(JMA11251-0902)



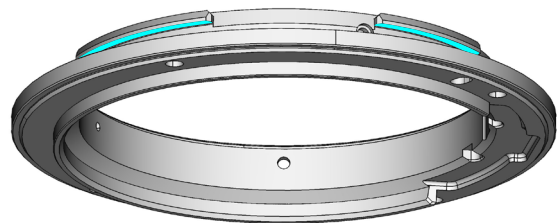
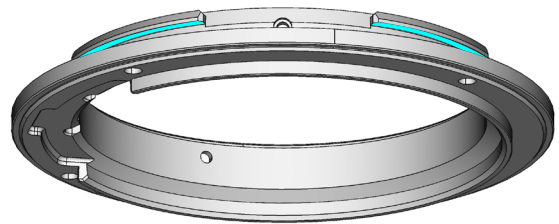
# MOUNT

MOUNT (127EC)

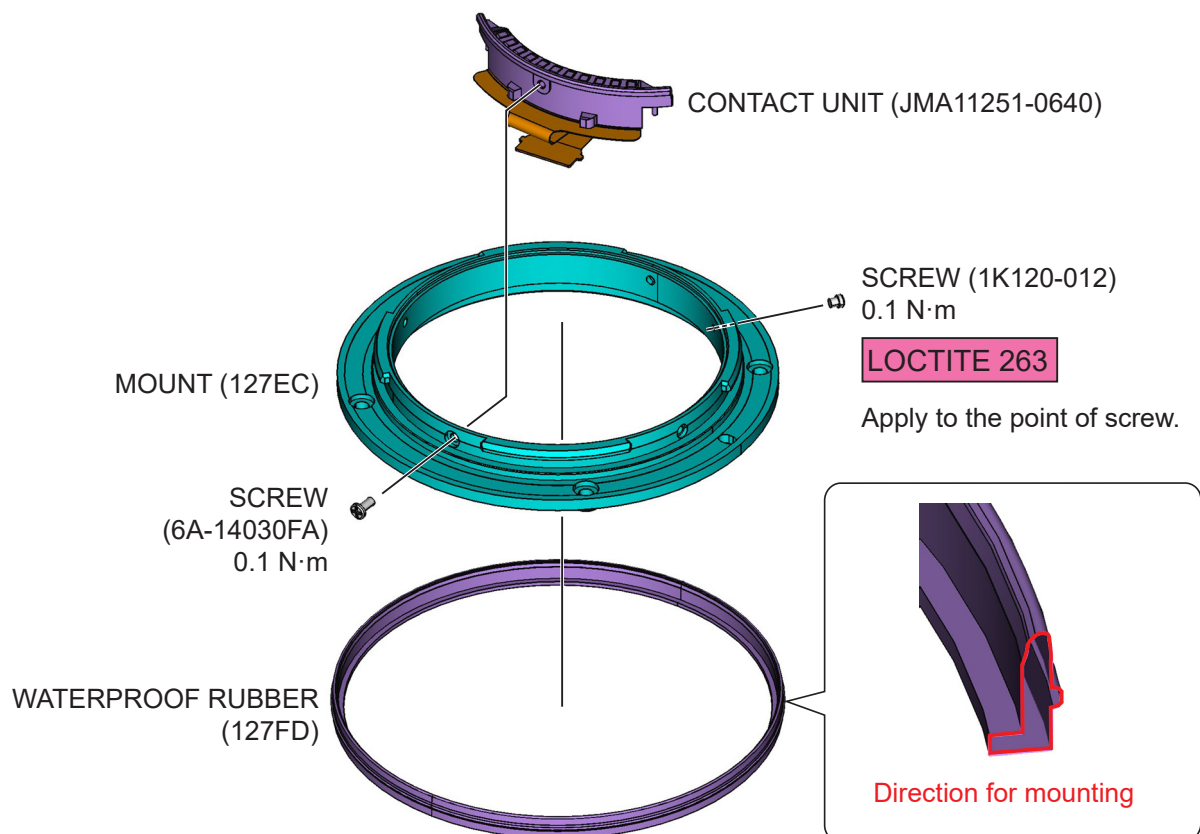


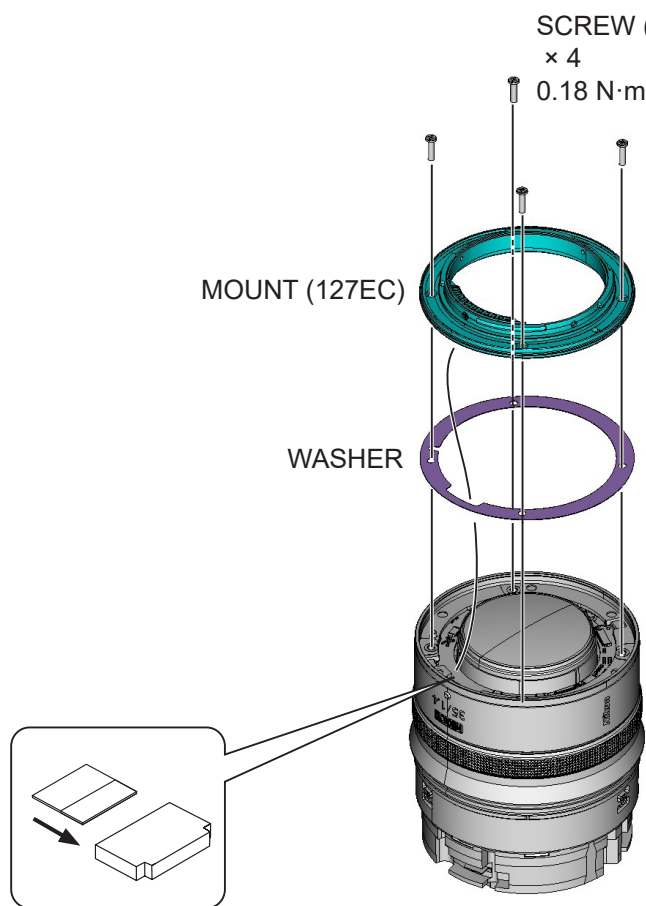
PL-1016EL

MOUNT (127EC)



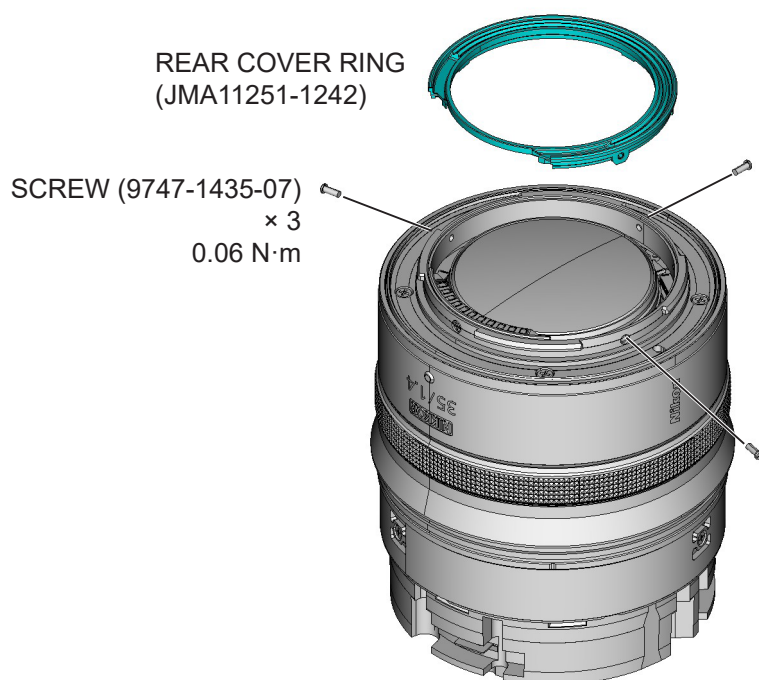
LEN317A





- Rotate the CONTROL RING UNIT to check its operating characteristics. If the operation is heavy, refer to page 20 and replace the washer with a thinner one. If the operation is lightly, refer to page 20 and replace the washer with a thicker one.

## REAR COVER RING



## MF RING UNIT

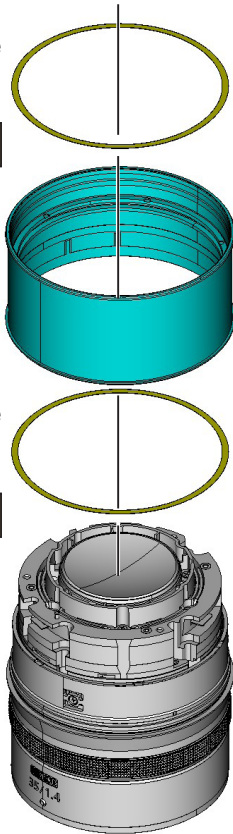
WASHER (Refer to the table below for item codes.)

FT-900P

MF RING UNIT  
(JMA11251-0236)

WASHER (Refer to the table below for item codes.)

FT-900P



MDF-225P

FG-3X

OS-20P

Item code	Parts name	Thickness *
JMA11251-1510	WASHER	A
JMA11251-1511	WASHER	B
JMA11251-1512	WASHER	C

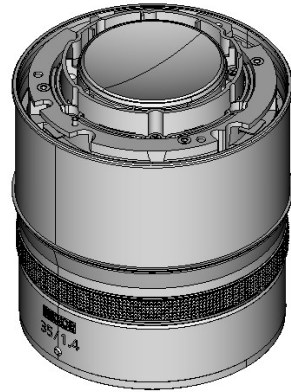
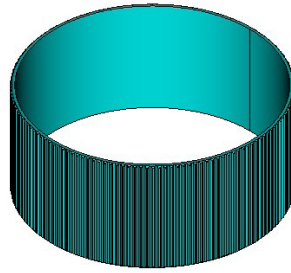
\* Thickness increases in order from A (thinnest) to C (thickest).

- If you replace the MF RING UNIT, you will need to adjust the WASHER size.  
To adjust the operation after assembling, use intermediate-size WASHER (JMA11251-1511) when assembling.
- When replacing the WASHER, select one that does not cause backlash.
- There is 1 or  $n$  item(s) in this part.



## MF RUBBER RING

MF RUBBER RING  
(JMA11251-1431)

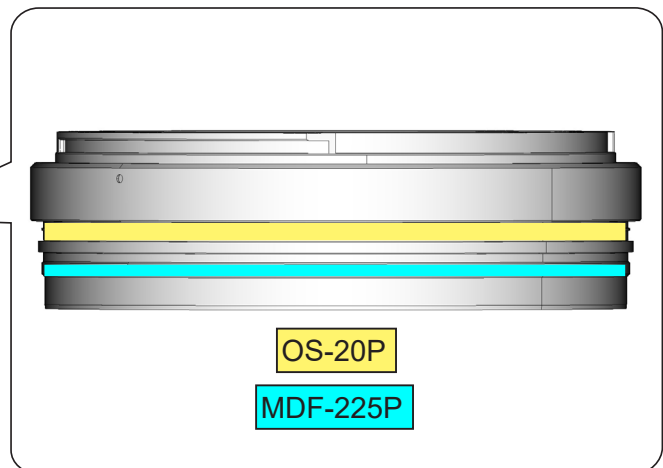
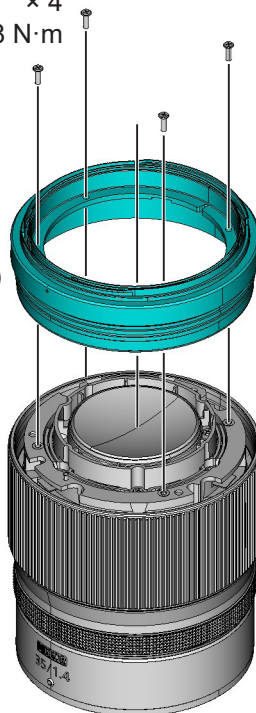


## FILTER RING

SCREW (9747-1750-07)

× 4  
0.18 N·m

FILTER RING  
(JMA11251-0251)

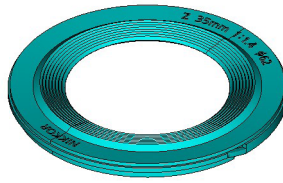


- Rotate the MF ring unit to check its operating characteristics. If the operation is heavy, refer to page 24 and replace the washer with a thinner one. If the operation is lightly, refer to page 24 and replace the washer with a thicker one.



## FRONT LABEL UNIT

FRONT LABEL UNIT  
(JMA11251-0241)



- The letters, "NIKKOR", are on the index side.



## IMPORTANT

- Perform the following inspection after repairs involving disassembly and assembly.
  - AF Accuracy Inspection Process (P. 27)
  - Control Ring Inspection Process (P. 31)
  - MF Ring Inspection Process (P. 33)

# AF Accuracy Inspection Process

When performing repairs that involve disassembling and reassembling the mount, check the AF accuracy before and after disassembling.

## Tools and parts required:

- Your mirrorless camera
- Tripod
- Indoor lighting (Use the flickerless light.)
- Commercially available focus chart that can measure the focus position
  - Focus charts can be purchased at stores that sell camera-related products or online stores that sell camera-related products.
  - Nikon hereby disclaims all responsibility and liability for any focus charts or other items purchased from third party retailers.

## Camera settings

- The AF accuracy is inspected using your own mirrorless camera, so please make sure that there are no abnormalities in the operation of your camera before starting the inspection.
- When performing an inspection, change the camera settings as shown below.
- Be sure to turn **OFF** "AF Fine Adjustment" as it affects the inspection results.

Set the camera as follows.

For details on the camera settings, refer to the instruction manual of the camera.

## **Camera settings**

- Shooting mode: A mode
- Image quality mode: FINE
- Image size: L
- Aperture: Full open
- ISO sensitivity: 100 to 800 (Automatic sensitivity control OFF)
- White balance: Auto (White priority)
- Picture control: SD (All parameters 0, or clarity 1 or 2)
- AF mode: AF-S
- AF area: Single point AF
- Active D-Lighting: OFF
- Diffraction correction: ON
- Automatic distortion correction: ON

- Vignette control: Standard
- Body VR: OFF
- Exposure delay mode: one to two seconds
- AF fine adjustment: OFF

## **Shooting environment**

Install the camera/lens and chart, referring to the figure below.

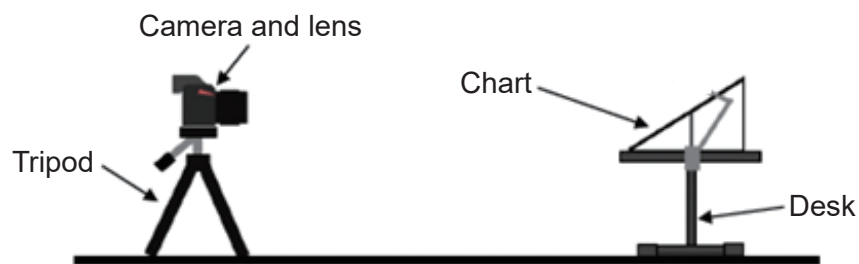
Shoot in a location that meets the following requirements:

- Place that is not affected by vibrations
- Place where the brightness can be ensured under indoor lighting.

(Please use flickerless lights.)

### **Example of shooting environment**

The measurement method with a focus chart differs depending on the focus chart you use, so please check the instruction manual for the focus chart you are using.



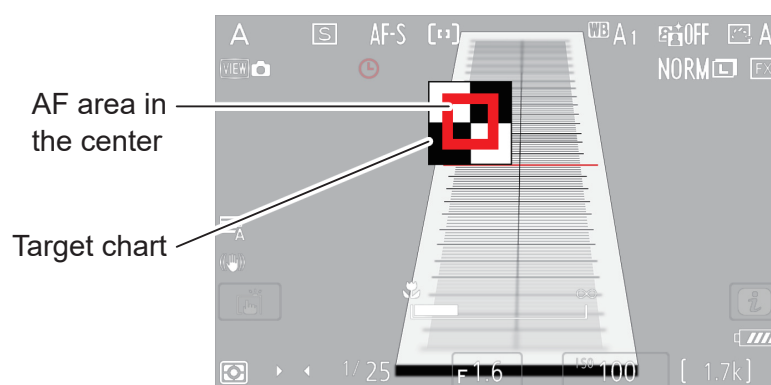
# AF accuracy inspection

Follow the steps below to inspect the AF accuracy.

## Inspection procedure

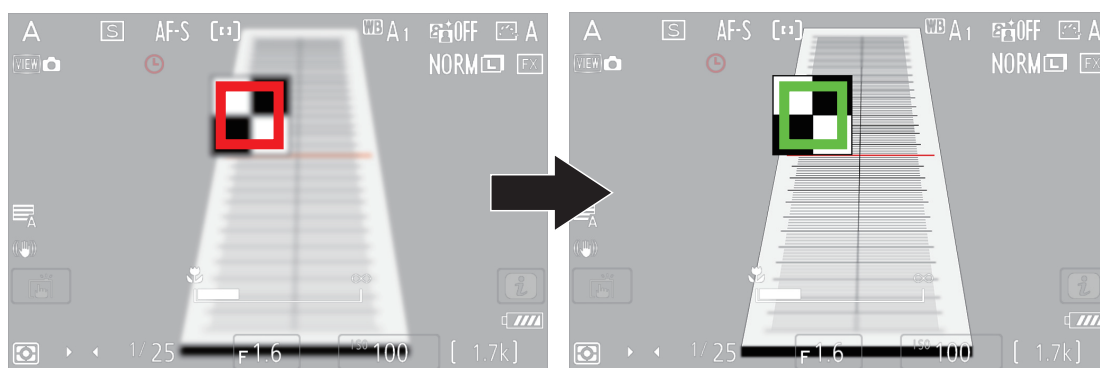
### 1 Adjust the camera position

1. Adjust the shooting distance so that the entire focus chart is displayed on the screen as shown in the image below.
  - Adjust the position so that the AF area in the center of the camera is aligned with the center of the target chart.



### 2 Check the focus

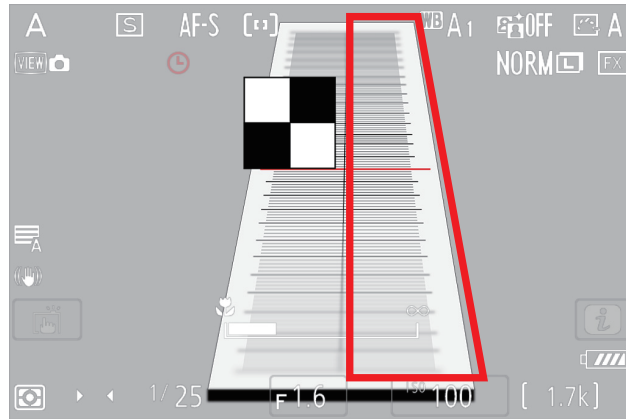
1. Turn the lens control ring clockwise viewed from the camera to change the focus to the infinity position.
2. Press the release button halfway and check that the chart is in focus.



---

### 3 Shoot the chart

1. Press the release button to shoot the target chart.
2. When checking before disassembling, check the inside of the red frame in the image, and record the focus position.



3. When checking after disassembling, confirm that there is no difference from the focus position recorded before disassembling.



#### CAUTION

- If the focus position is significantly different from what it was before disassembling, we recommend that you disassemble and repair the Product again.

# Control Ring Inspection Process

When performing repairs that involve disassembling or reassembling the mount, inspect the control ring.

## Tools and parts required:

- Your mirrorless camera

## Control ring inspection

Follow the steps below to perform a control ring inspection.

## Inspection procedure

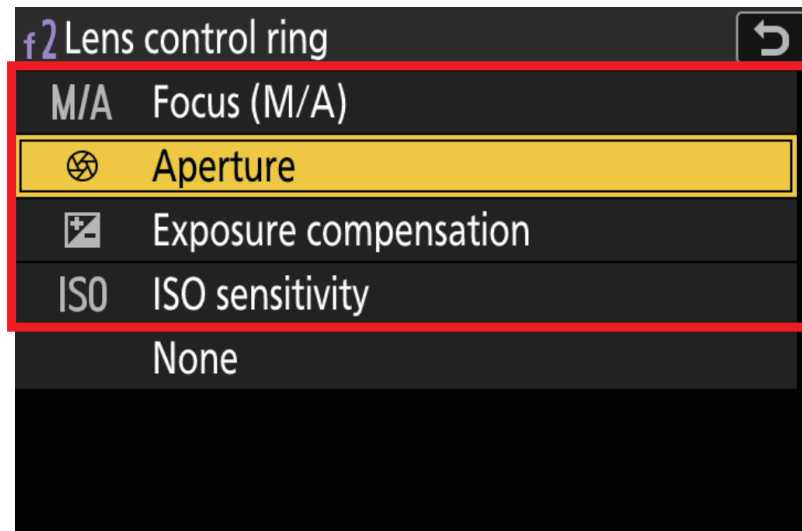
### **1 Check the functions assigned to the control ring**

1. From the camera MENU, select [Custom Menu] - [f Operation] - [f2 Custom controls(shooting)].
  - The setting names may differ depending on the camera model.
2. Check the functions assigned to the control ring.
  - In the example below, confirm that "Aperture" is set.



The setting names may differ depending on the camera model.

- If no function is set on the control ring, set one of the following functions.



The setting names may differ depending on the camera model.

---

## 2 Check the operation of the control ring

1. Rotate the lens control ring and check whether the assigned function is working.
  - **Focus (M/A):** Check that the focus operation is performed.
  - **Aperture:** Set the exposure mode to A mode or M mode, and check that the aperture changes.
  - **Exposure compensation:** Check that the exposure compensation changes.
  - **ISO sensitivity:** Check that the ISO sensitivity changes.

# MF Ring Inspection Process

When performing repairs that involve disassembling or assembling the mount, inspect the MF ring.

## Tools and parts required:

- Your mirrorless camera

## MF ring inspection

## Inspection procedure

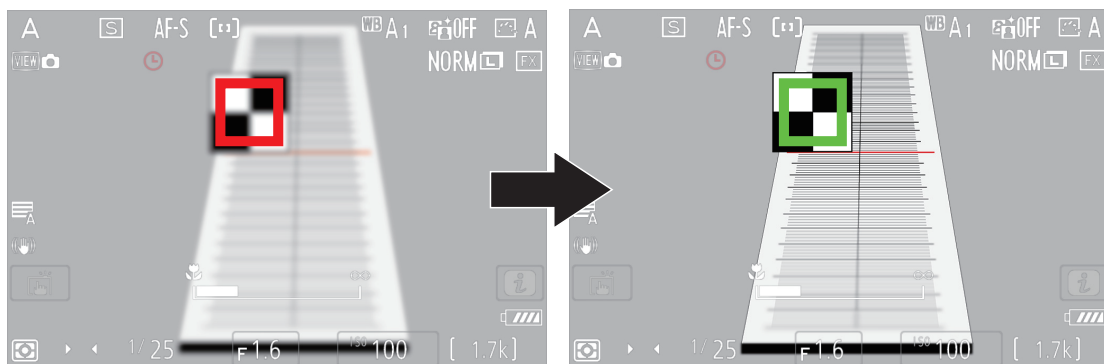
---

### **1 Attach the lens to your mirrorless camera.**

---

### **2 Rotate the MF ring and check that the focus function works.**

While watching the camera monitor, check that focus positions change.





No reproduction in any form of this document, in whole or in part (except for brief quotation in critical articles or reviews), may be made without written authorization from NIKON CORPORATION.

Out of concern for the environment, Nikon is working to reduce its use of paper.

**NIKON CORPORATION**

---

© 2024 Nikon Corporation