

Dowler BFWM2402

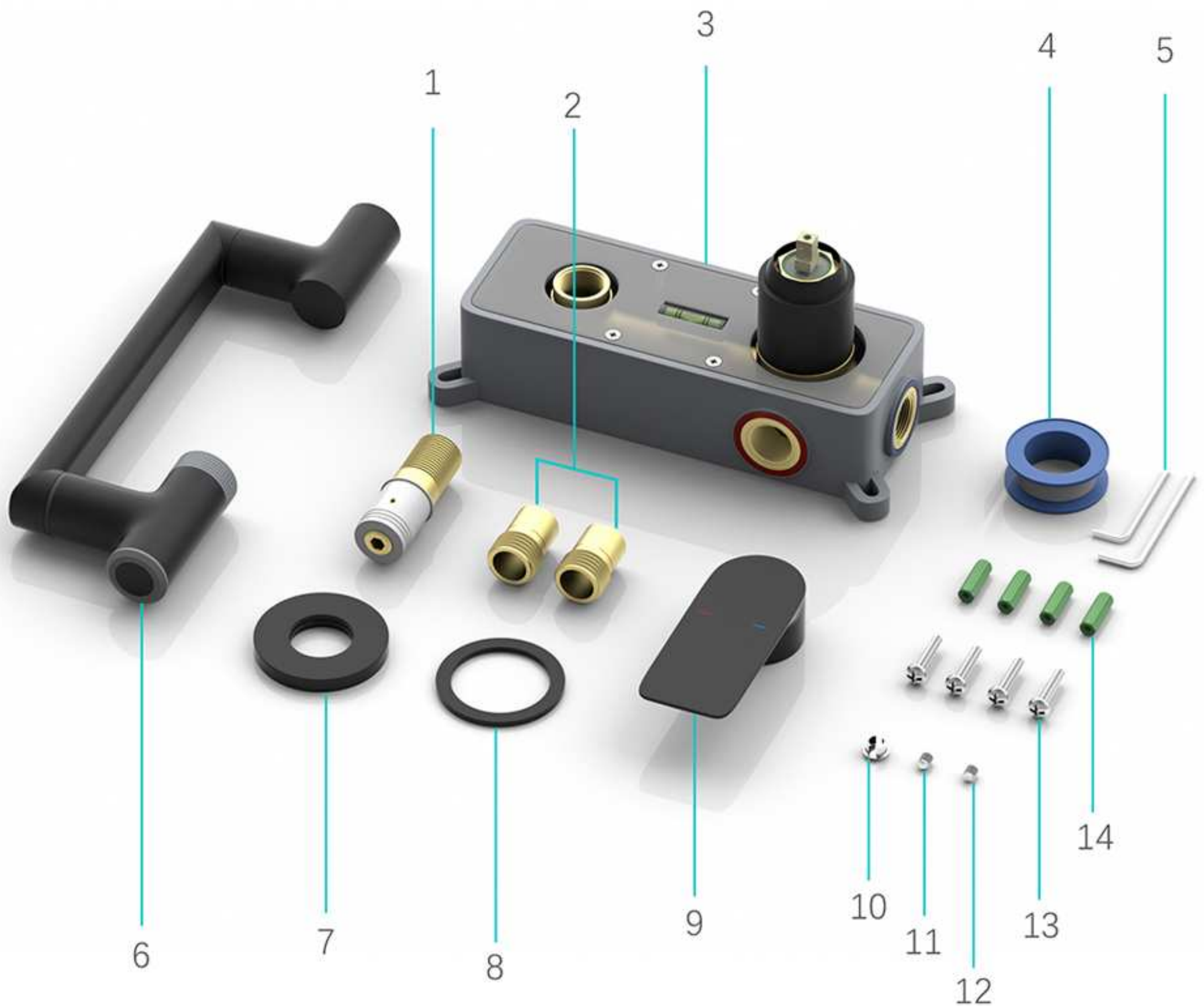
Installation Manual



Before installing the faucet, please be sure to clean any debris and sludge from the water pipes to prevent the faucet from getting clogged, which could affect the normal water flow.

PACKING LIST

1. Mixing Water Connector
2. Pipe-fitting Adapter *2
3. Rough-in Valve
4. Sealant tape
5. Hexagonal wrench *2
6. Faucet
7. Faucet Decorative Cover
8. Handle Decorative Cover
9. Handle
10. Hole Cover Cap
11. Socket Set Screw - Corn Point
12. Socket Set Screw - Flat Point
13. Flat Head Screw *4
14. Expansion tube *4



INSTALLATION STEPS

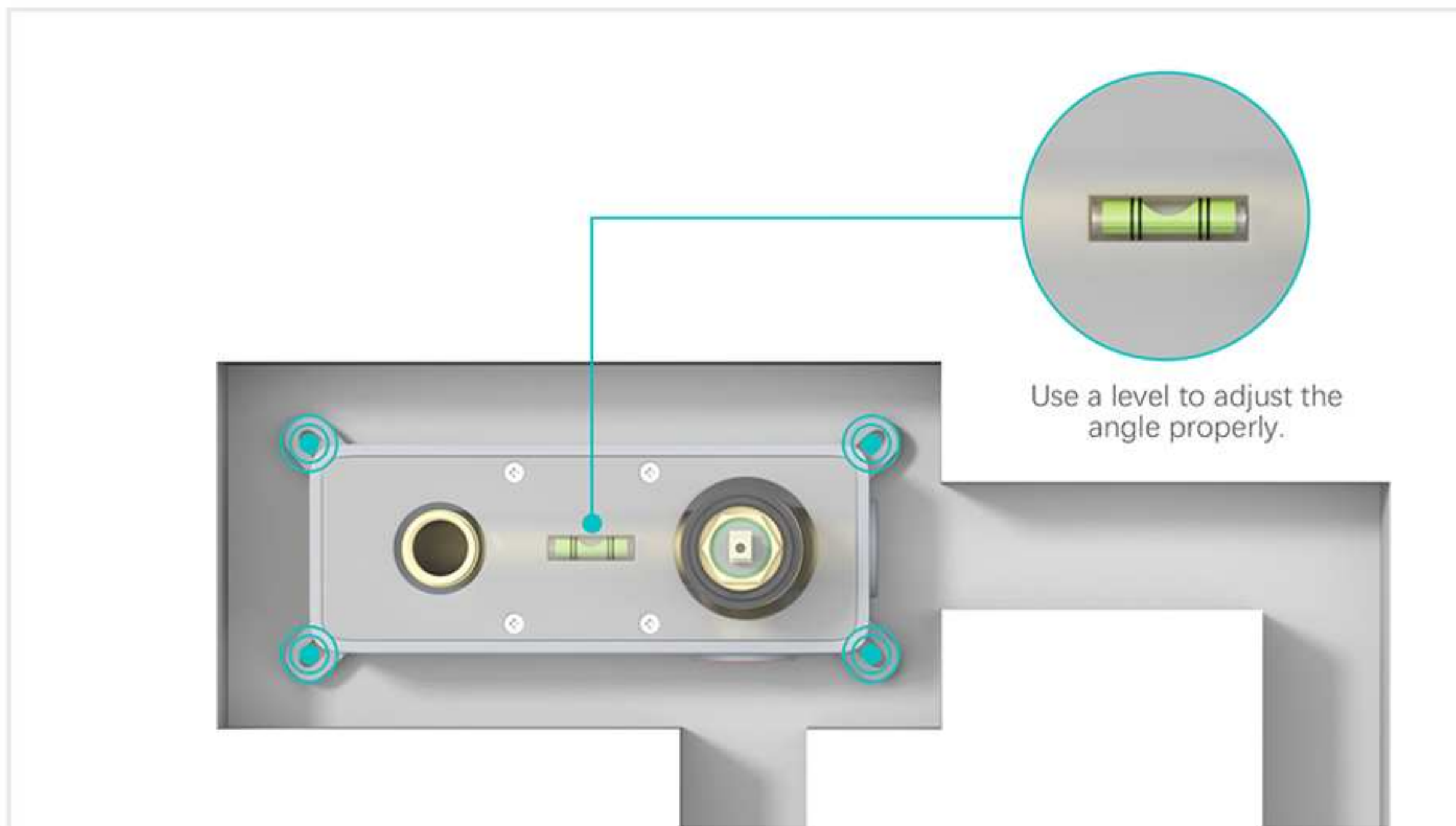


1. Wall groove cutting dimensions

2.

Mark

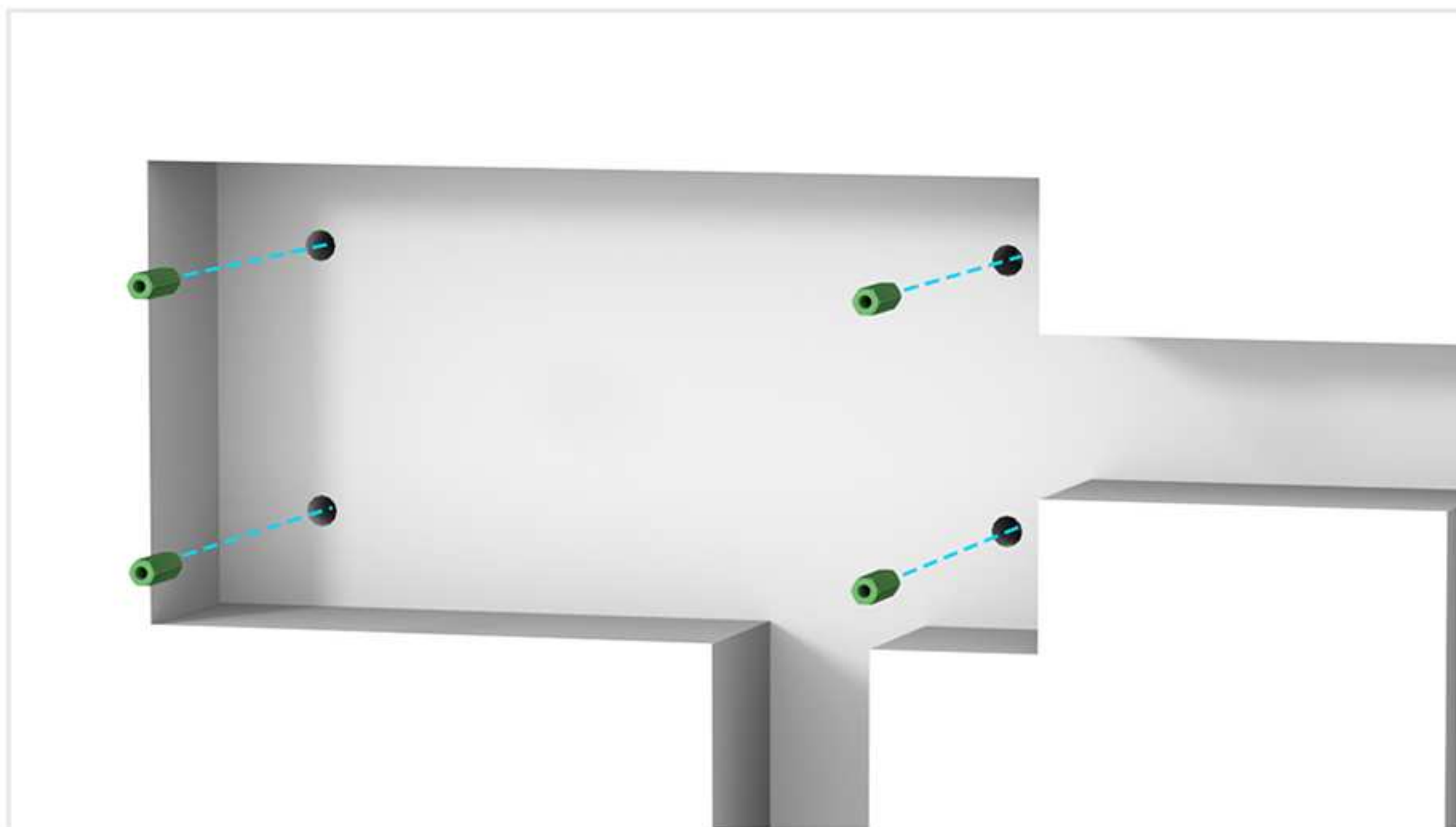
Place the Rough-in Valve into the wall, mark the drilling positions, and drill four fixed-position holes.



3.

Install expansion tube

Insert the expansion tube into the drilled hole.



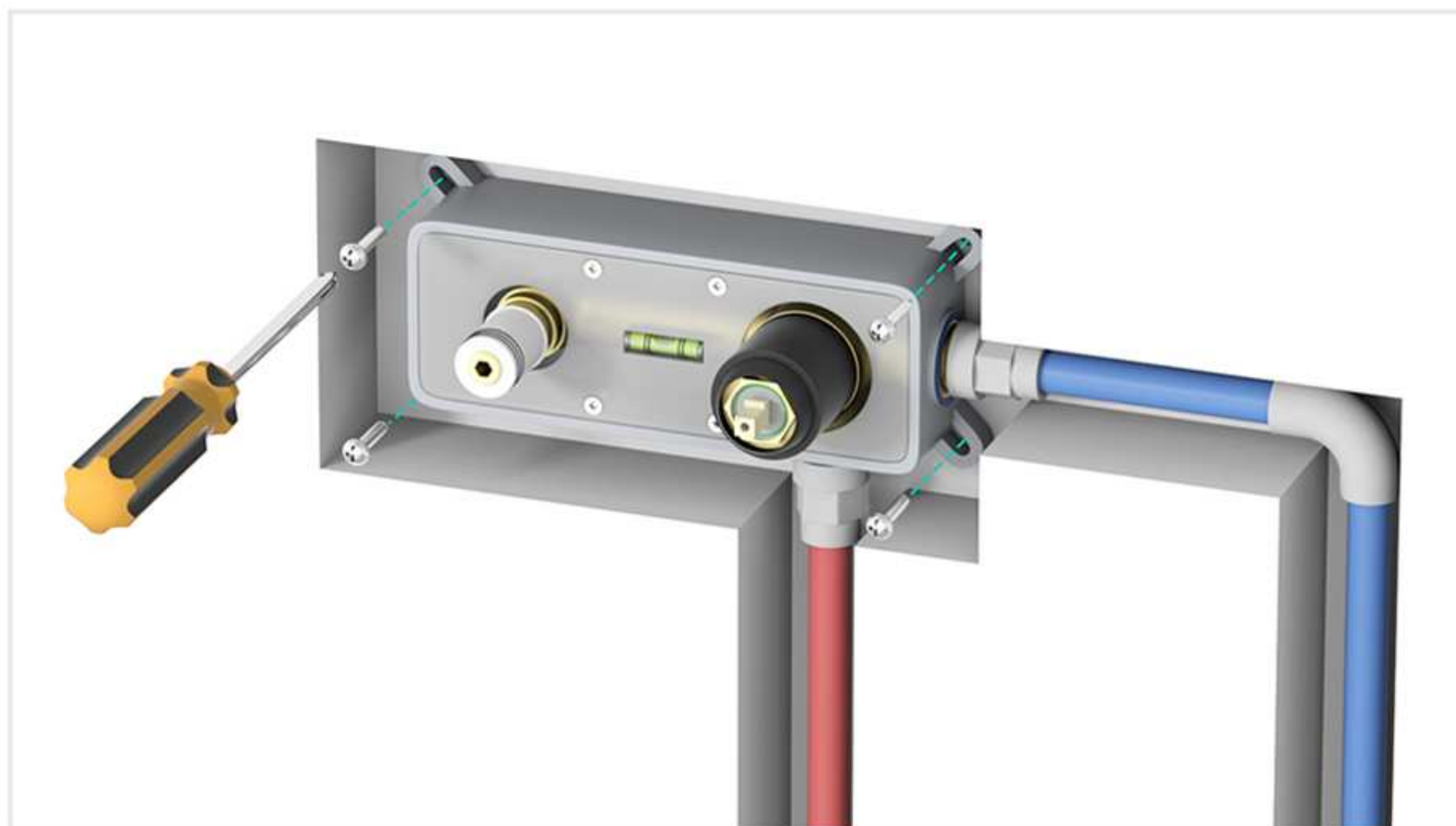
4. Pipe connections

Wrap the sealing tape around the threads and connect the hot and cold water inlet pipes and the water outlet connector.



5. Install Rough-in valve

Secure it to the wall using screws.

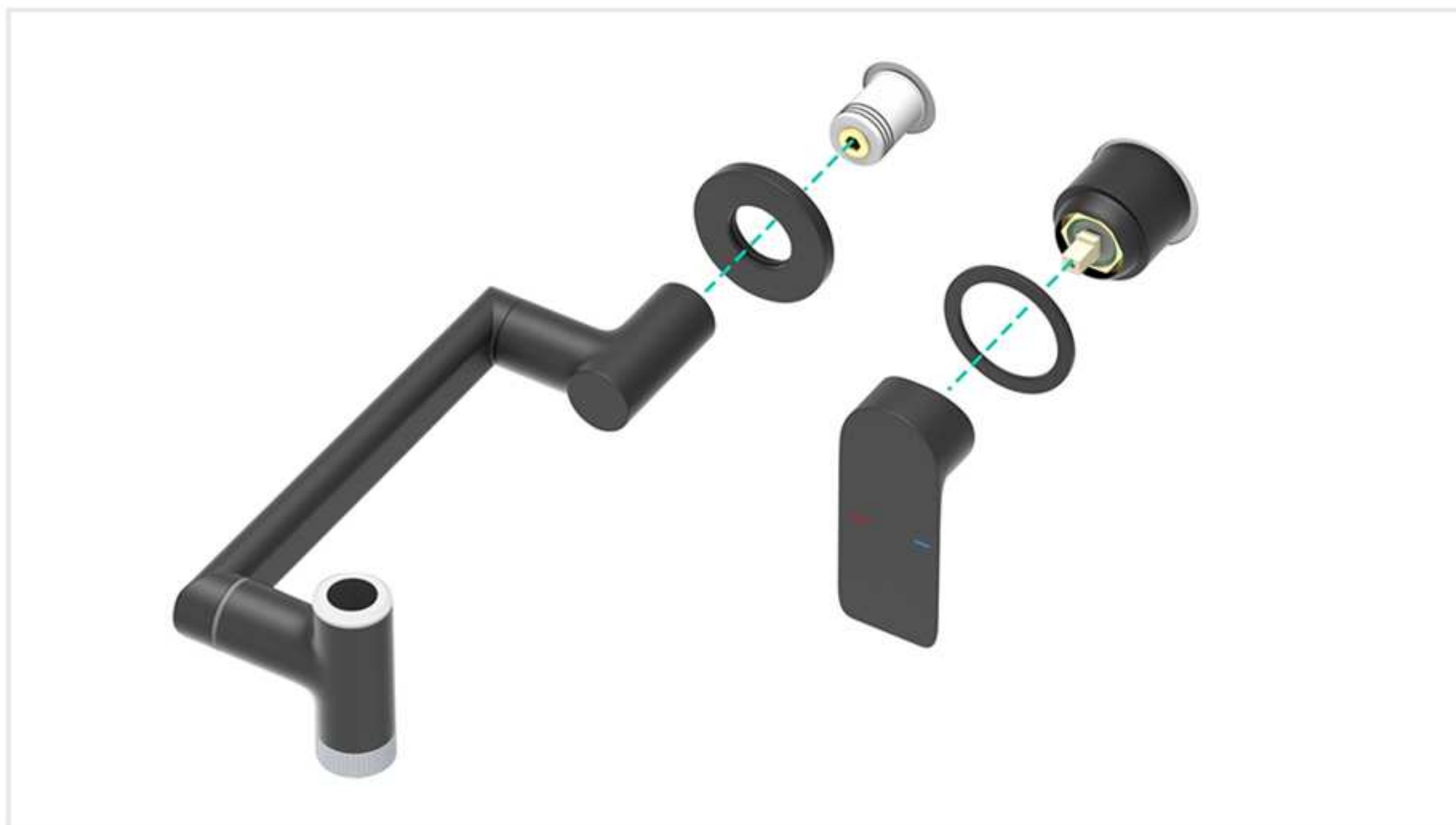


6. Drilling hole size



7. Faucets and handle

Install the faucet and accessories in order.



8. Mounting screws

Use a hexagonal wrench to install the screws.

