



# **ZKT<sub>eco</sub>**

# **PRODUCT GUIDE Q1**

TRUSTED BIOMETRIC SECURITY SOLUTIONS

## **CONTACT US**



Unit 8B, Eco Square, 298 Witch-  
Hazel Ave, Centurion, 0144



012 259 1047



[www.zkteco.co.za](http://www.zkteco.co.za)

**ZKT<sub>eco</sub>**  
SOUTH AFRICA

# TABLE OF CONTENTS

## STANDALONE ACCESS CONTROL DEVICES

ENTRY-LEVEL STANDALONE DEVICES	2
MID-LEVEL STANDALONE DEVICES	3
HIGH-LEVEL STANDALONE DEVICES	5

## CONTROLLERS

DOOR CONTROLLER	5
ELEVATOR CONTROLLER	6

## SLAVE READERS

7

## VIDEO INTERCOM

8

## STANDALONE TIME & ATTENDANCE DEVICES

8

## VEHICLE ENTRANCE CONTROL

LICENSE PLATE RECOGNITION	9
LONG RANGE RFID READERS	9
UHF TAGS	10
PARKING GATES + ACCESSORIES	10

## PEDESTRIAN ENTRANCE CONTROL

SWING GATES/SPEED GATES	11
FULL HEIGHT TURNSTILES	11
TRIPOD TURNSTILES	12

## PEDESTRIAN SECURITY INSPECTION

HANDHELD METAL DETECTOR	12
WALK-THROUGH METAL DETECTORS	13
X-RAY INSPECTION SYSTEM	13

## SMART LOCKS & HOTEL LOCKS

SMART LOCKS	15
HOTEL LOCKS	16
HLMS HOTEL LOCKS + ACCESSORIES	16

## LOCKER SOLUTION

17

## ACCESSORIES

17

## FACEKIOSK

19

## SOFTWARE

ZKBIO CVSECURITY	19
BIOTIME	19
WTMD	19
ZKBIOHLMS	20

## DEVELOPMENT

PUSH SDK	20
BIOMETRIC SDK	20
ANDROID	20



## SOUTH AFRICA'S TRUSTED SECURITY MANUFACTURER FOR 15 YEARS

*ZKTeco upholds the vision of "Responsibility, Integrity, Pragmatism and Excellence", to change the world with technology and ensure smarter and safe living standards and social developments. Our goal is to share out highly developed, revolutionary biometric technology to benefit businesses and individuals.*

### ZKTECO: A GLOBAL LEADER IN SECURITY AND INNOVATION

ZKTeco provides comprehensive solutions for public service, enterprise-level, and personal users, with a global workforce of approximately 4,000 employees. This includes over 1,100 dedicated R&D professionals and 730 international staff. The company operates 14 subsidiaries and 29 branches within China, as well as 38 subsidiaries across Hong Kong, Macau, Taiwan, and other international markets (as of December 2021). ZKTeco's development and innovation centers are strategically located in India, Dongguan, Shenzhen, Xiamen, and Dalian.

ZKTeco's advanced technologies and smart terminals are trusted by a majority of the world's top 500 enterprises, with its business footprint spanning over 100 countries and regions. The company has received significant global recognition, including being ranked 12th on a&s Magazine's "Top 50 Global Security Companies 2022." Additionally, ZKTeco was honored with accolades such as the "Top 10 HRMS Solution Providers 2019" by HR Tech Outlook, the "Top 30 Technology Innovations 2019" by Security Sales & Integration, and the "ESX Innovation Award" at the 2015 Electronic Security Expo.

Guided by its vision of "Responsibility, Integrity, Pragmatism, and Excellence," ZKTeco is committed to leveraging technology to create safer, smarter environments and foster sustainable social development.

### ZKTECO SOUTH AFRICA

*"ZKTeco South Africa is playing a pivotal role in shaping the future of security in the country, particularly given the rise in IoT and AI adoption locally. This follows its strong presence in South Africa for over 15 years, during which time it has demonstrated an unwavering commitment to bringing industry-leading biometric technologies to the local market. ZKTeco's unrivalled security products are also available nationwide, thanks to its extensive distribution network that comprises South Africa's largest ICT distributors.*

*It operates its own Experience Centre in Centurion, too, where industry players, distributors, and technology partners can learn more from ZKTeco about the future of the security and IoT sectors. ZKTeco South Africa remains dedicated to continuing its legacy of leadership and innovation in South Africa's biometrics industry, and is determined to remain at the cutting edge of the sector."*

**- [MyBroadband.co.za](http://MyBroadband.co.za)**

### ZKTECO SA HEAD OFFICE

**Unit 8B, Eco Square, 298 Witch-Hazel Avenue, Centurion, 0144**

## ENTRY-LEVEL STANDALONE DEVICES

Our entry-level devices provide essential functionality at a lower cost, making it suitable for smaller businesses or basic installations. Entry-level devices are straightforward, user-friendly, and focus on core features without advanced or specialised options, which helps keep costs down while still ensuring secure access control or time and attendance.



### SenseFace 2A

The SenseFace 2A is an access control and Time And Attendance terminal featuring video intercom functionality and supports ONVIF video streaming. The SenseFace 2A is ideal for indoor environments. It adopts the latest intelligent engineering for facial authentication. It adopts ultimate anti-spoofing algorithms for facial authentication against almost all types of fake photos and voids attacks while offering secure biometric authentication.

#### Accessories

- Electric Locks
- Door Sensors
- Exit Button
- 12V Power Supply
- Stand Off Box

#### Device Specifications

- Face capacity: 1500
- Fingerprint capacity: 3000
- Card capacity: 3000
- Transactions: 150 000
- Communication type: TCP/IP, Wi-Fi, USB
- Software: Bio CVSecurity, BioTime
- ONVIF camera streaming for NVR recording
- Video Intercom



### SpeedFace V3L Lite

The SpeedFace V3L Lite gives you secure Access Control and Time And Attendance within a small form factor and slim design, also featuring video intercom functionality allowing you to monitor your entrances. This device utilises advanced facial recognition technology to swiftly and accurately identify individuals, making it especially suitable for environments with high foot traffic in indoor environments.



#### Accessories

- Electric Locks
- Door Sensors
- Exit Button
- 12V Power Supply
- Stand Off Box

#### Device Specifications

- Face capacity: 500
- Card capacity: 3000
- Log capacity: 200 000
- Communication: TCP/IP
- Software: Bio CVSecurity, BioTime
- Video Intercom



### MK-V1 (F)

The MK-V1 (F) is a powerful access control terminal that utilises advanced fingerprint recognition technology for secure and reliable user authentication. Designed for streamlined access management, this device offers fast verification and supports multiple communication options for easy integration into security systems.

#### Accessories

- Electric Locks
- Door Sensors
- Exit Button
- 12V Power Supply
- ID Tags and ID Thin Cards

#### Device Specifications

- Zinc Alloy housing
- IP66 Ingress Protection
- Fingerprint Capacity: 100
- Card capacity: 888
- Transactions: 1000
- Communication type: Wi-Fi, Bluetooth, Wiegand (Input & Output)
- Software: ZSmart Mobile App

## MID-LEVEL STANDALONE DEVICES

ZKTeco's mid-level devices are designed to offer a balance of advanced features and cost-effectiveness, catering to businesses looking for reliable and efficient biometric solutions. These devices typically support core functionalities like connecting to slave devices, background verification allowing linkages, and multi-credential verification, suitable for medium-sized enterprises or locations with moderate security needs. They are built with durable materials, often featuring basic environmental protection and support essential communication protocols. Mid-level devices provide a solid combination of performance and value, ideal for general Access Control and Time Attendance applications.



### SC800

The SC800 is a weatherproof RFID Access Control terminal that is designed for outdoor applications.

This terminal adopts a metal mid-frame housing and a tempered glass panel, with IP65 and IK04 vandal proof ratings. The SC800 is the ideal device for a Secure RFID Access or Time and Attendance solution.

#### Accessories

- Electric Locks
- Door Sensors
- Exit Button
- 12V Power Supply
- Wiegand Slave Readers
- RS485 Slave Readers
- Sirens/Buzzers

#### Device Specifications

- Card capacity: 50 000
- Log capacity: 200 000
- Communication: TCP/IP/Wi-Fi/ USB
- IP rating: IP65 & IK04
- Software: Bio CVSecurity, BioTime
- Supports multi-tech card module (optional)



### F35

The F35 offers advanced security functions and high fingerprint capacity at an affordable price. The F35 is specifically designed for harsh environments and is vandal resistant making it ideal for garages, work shops and any rough environment. With its slim, streamlined design and in-glass fingerprint sensor, the F35 is suitable for corporate environments as well. The F35 also has a dedicated 2MP camera giving you intercom functionality and allowing you to stream the video to an NVR for recording.



#### Accessories

- Electric Locks
- Door Sensors
- Exit Button
- VT07-B01
- Acc and Att Push
- Sirens/Buzzers
- 12V Power Supply
- ID Tags and ID Thin Cards
- RS485 Slaves
- Wiegand Slaves
- Rainshield & Stand Off Box

#### Device Specifications

- Fingerprint capacity: 10 000
- Card capacity: 10 000
- Log capacity: 500 000
- Communication: TCP/IP/Wi-Fi
- IP rating: IP65 & IK04
- Software: Bio CVSecurity, BioTime
- ZSmart Video Intercom (Optional)
- ONVIF video streaming
- Supports multi-tech card module (optional)



### SpeedFace M4

The SpeedFace M4 is specifically designed for the outdoor environment. Using the built-in Wide Dynamic Range (WDR) camera, the device can read faces in almost all environments and its IP66 rating makes it resistant to harsh outdoor conditions. The M4 also provides Video Intercom functionality making this the ideal device for the front gate or front door at a corporate building.



#### Accessories

- Electric locks
- Door Sensors
- Exit Button
- 12V Power Supply
- Wiegand Slave readers
- RS485 Slave readers
- Sirens/Buzzers
- VT07-B01
- Acc and Att Push SDK
- Rainshield & Stand off Box

#### Device Specifications

- Face capacity: 6000
- Palm capacity: 3000
- Card capacity: 10 000
- Log capacity: 200 000
- Communication: TCP/IP/Wi-Fi
- IP rating: IP66
- Software: Bio CVSecurity, BioTime
- ZSmart Video Intercom (Optional)
- ONVIF video streaming



### SpeedFace V4L Pro

The SpeedFace-V4L Pro uses intelligent engineering facial recognition algorithms and the latest computer vision technology, making it especially suitable for environments with high foot traffic. What sets the SpeedFace V4L Pro apart from the other facial devices is its 4-inch color LED touch screen, a 2MP binocular camera, a built-in microphone, and a speaker for two-way video communication.



#### Accessories

- Electric Locks
- Door Sensors
- Exit Button
- 12V Power Supply
- Wiegand Slave readers
- RS485 Slave readers
- Sirens/Buzzers
- SRB
- VT07-B01
- Acc and Att Push SDK
- Stand Off Box

#### Device Specifications

- Face capacity: 3000
- Fingerprint capacity: 3000
- Card capacity: 3000
- Log capacity: 200 000
- Communication: TCP/IP/Wi-Fi
- Software: Bio CVSecurity, BioTime
- ZSmart Video Intercom (Optional)
- ONVIF video streaming
- Multi-Frequency Card Module (Optional)



### SpeedFace V5L

The SpeedFace-V5L uses touchless recognition technology and can identify individuals even when wearing masks. Additionally, it has an advanced anti-spoofing algorithm that can detect fake photos and videos. It also features 3-in-1 palm recognition, which can identify Palm Shape, Palm Print, and Palm Vein.



#### Accessories

- Electric Locks
- Door Sensors
- Exit Button
- 12V Power Supply
- Wiegand Slave readers
- RS485 Slave readers
- Sirens/Buzzers
- VT07-B01
- Acc and Att Push SDK
- Stand Off Box

#### Device Specifications

- Face capacity: 6000
- Palm capacity: 3000
- Fingerprint capacity: 6000
- Card Capacity: 10 000
- Log Capacity: 200 000
- Communication: TCP/IP/Wi-Fi
- Software: Bio CVSecurity, BioTime
- ZSmart Video Intercom (Optional)
- ONVIF video streaming



### F17

The F17 is a field tested and highly reliable outdoor fingerprint device that is available for sale for over a decade, there is very little that the F17 cannot do. With its IP65 rated rugged weatherproof and dust-proof structure, the F17 offers extra durability in harsh conditions. The F17 is ideal for applications such as houses, offices, shops, garages and factories.



#### Accessories

- Electric Locks
- Door Sensors
- Exit Button
- 12V Power Supply
- Wiegand Slave readers
- RS485 Slave readers
- Sirens/Buzzers
- Rainshield & Stand Off Box

#### Device Specifications

- Fingerprint capacity: 3000
- Card capacity: 10 000
- Log capacity: 50 000
- Communication: TCP/IP/USB
- IP rating: IP65
- Software: Access 3.5



### F22

The F22 is an ultra-thin fingerprint time attendance and access control terminal with Wi-Fi. The advanced fingerprint algorithm offers unparalleled performance in reliability, precision and matching speed. The F22 is ideal for any environment that requires Time and Attendance and/or Access Control.



#### Accessories

- Electric Locks
- Door Sensors
- Exit Button
- 12V Power Supply
- Wiegand Slave readers
- RS485 Slave readers
- Sirens/Buzzers
- Acc Push SDK (Coming soon)
- Supports Att Push
- Stand off Box

#### Device Specifications

- Fingerprint capacity: 3000
- Card capacity: 5000
- Log capacity: 30 000
- Communication: TCP/IP/ Wi-Fi/USB
- Software: Access 3.5, BioTime, Bio CVSecurity (Coming soon)



Regal Sole Distribution Model

## HIGH-LEVEL STANDALONE DEVICES

Project or High-Level devices represent ZKTeco's top-tier offerings, featuring cutting-edge technology and advanced security capabilities for complex, large-scale implementations. These devices are designed for projects requiring robust, multi-modal biometric verification with a focus on enhanced speed, accuracy, and anti-spoofing measures. High-level devices often have superior environmental and impact protection, making them suitable for harsh environments. They support extensive communication options and advanced integration capabilities. Ideal for large corporations, government projects, and high-security applications, these devices provide maximum performance and flexibility.



### ProMA

The ProMA is a high-end multi-biometric access control standalone terminal. Its aluminium-alloy casting creates an ultra robust device that is perfectly suited to harsh environments. Featuring some of the quickest authentication speeds of any ZKTeco device, you can expect rapid entry and exit on any site or building



#### Accessories

- Electric Locks
- Door Sensors
- Exit Button
- 12V Power Supply
- Wiegand Slave readers
- RS485 Slave readers
- Sirens/Buzzers
- VT07-B01
- Acc Push SDK
- Rainshield

#### Device Specifications

- Face capacity: 30 000
- Fingerprint capacity: 10 000
- Card capacity: 100 000
- Log capacity: 500 000
- Communication: TCP/IP
- IP Rating: IP66 & IK07
- Software: Bio CVSecurity
- ZSmart Video Intercom (Optional)
- ONVIF video streaming



### ProFace X

If you require a bigger screen, the ProFace-X featuring an 8-inch IK04 vandal proof screen is just the device for you. It offers advanced features and the biggest screen ZKTeco has ever manufactured.



#### Accessories

- Electric Locks
- Door Sensors
- Exit Button
- 12V Power Supply
- Wiegand Slave readers
- RS485 Slave readers
- Sirens/Buzzers
- VT07-B01
- Acc & Att Push SDK
- Rainshield & Stand Off Box

#### Device Specifications

- Face capacity: 30 000
- Card capacity: 100 000
- Log capacity: 1 000 000
- Communication: TCP/IP/ Wi-Fi
- IP Rating: IP68 & IK04
- Software: Bio CVSecurity, BioTime
- ZSmart Video Intercom (Optional)
- ONVIF video streaming

## INBIO PRO PLUS CONTROLLERS



### InBio 160 Pro Plus One Door Controller



### InBio 260 Pro Plus Two Door Controller



### InBio 460 Pro Plus Four Door Controller

### InBio Pro Plus Series

The InBio Pro Plus Series is a project oriented, high-end product line with distinctive features, including embedded facial and fingerprint authentication, as well as advanced access control functions. The InBio Pro Plus is ideal for high security applications.



#### Accessories

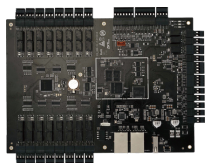
- Electric Locks
- Door Sensors
- Exit Button
- 12V Power Supply
- Wiegand Slave readers

#### Device Specifications

- Face capacity: 3000
- Fingerprint capacity: 20 000
- Card/QR capacity: 100 000
- Log capacity: 500 000
- Communication: TCP/IP
- Software: Bio CVSecurity

- RS485 Slave readers
- Sirens/Buzzers
- InBio Enclosure
- Acc Push SDK
- Enclosure Box

## ELEVATOR CONTROL PANEL &amp; EXPANSION BOARD

**EC16****Elevator Control Panel**

EC16 is the second generation of ZKTeco's elevator control panels. It can support fingerprint and RFID card verification through RS485 direct connection. At the same time, it supports dynamic QR code access and facial recognition, fingerprint recognition through ZKTeco's Bio CVSecurity security platform.

**Accessories**

- 12V Power Supply
- Exit Button
- RS485 Fingerprint Slave
- Wiegand Slave
- DEX16 Expansion Board
- Acc Push SDK

**Device Specifications**

- Fingerprint capacity: 30 000
- Card capacity: 100 000
- Transactions: 150 000
- Communication Type: TCP/IP
- Software: CVSecurity

**DEX16****Elevator Floor Expansion Board**

128 Floors (7 x DEX16) on one EC16

## SLAVE READERS

Our Slave Readers are compact and reliable devices designed to extend access control capabilities. Supporting RFID, biometric, and QR code authentication, they seamlessly integrate with ZKTeco controllers for efficient and secure access management.

**KF1200****Visible Light Facial Recognition & RFID Reader**

The KF1200 Slave Reader supports up to 30 000 users and cards, with a face recognition capacity of 1500. It offers a log capacity of 100 000 entries and supports various communication protocols, including TCP/IP, Wiegand, RS485 (coming soon), and Wi-Fi, making it a versatile solution for access control systems.

**QR600 Series****QR Wiegand & RS485 Slave Reader with Keypad**

The QR600 supports both RS485 and Wiegand making it a versatile slave reader. The QR600 Series is made up of metal and is IP65 rated. The QR reader supports Dynamic QR code recognition with the Zexus Mobile Application.

**F12****IP65 Slave Fingerprint Reader**

F12, a fingerprint reader with RS485 communication interface, works with biometric access controllers and fingerprint standalone access control. It offers the function of capturing and transferring fingerprint templates to access control panels. With its IP65 rated and rugged structure, F12 offers extra durability in all weather conditions including outdoor environments

**FR1500 FP Reader****Flush-Mounted RS485 Fingerprint Reader**

FR1500, a fingerprint reader with RS485 communication interface, works with biometric access controllers and fingerprint standalone access control. It offers the function of capturing and transferring fingerprint templates to access control panels.

**KR101****RFID waterproof reader**

The KR101 is a 125kHz RFID-compatible reader with an IP65 rating for durability in outdoor environments. It supports Wiegand 34-bit communication, making it an ideal solution for secure and reliable access control in various settings.

**KR310****Dual frequency RFID waterproof reader**

The KR310 is a dual-frequency RFID reader supporting both 125kHz and 13.56MHz, compatible with ID, Mifare Classic, and Mifare Desfire cards. With an IP65 rating for outdoor durability, it offers Wiegand 34-bit communication, making it a versatile and secure access control solution.

**KR600-E****125kHz EM Slave Wiegand Card Reader**

The ZKTeco KR600-E is a 125kHz RFID reader with an IP65 rating, designed for durability in outdoor environments. It features Wiegand 26-bit communication and operates with a power range of 6-14VDC, drawing a maximum of 70mA, making it a reliable and efficient access control solution.

**KR602-E****125kHz EM Slave Wiegand Card Reader**

The KR602-E is a 125kHz RFID reader with an IP65 rating, ensuring durability in outdoor conditions. It supports Wiegand 26-bit communication and operates with a power supply range of 6-14VDC, consuming a maximum of 70mA, making it a reliable and efficient solution for access control.

**ProID Series****125kHz EM Slave Wiegand Card Reader**

The ProID Series (ProID 10, 20, and 30) features an IP65 rating for outdoor durability. With Wiegand communication and a power supply range of 7-13VDC (max 80mA), these readers offer on-site adjustable Wiegand output (26 or 34 bits), providing versatile and reliable access control solutions.

## VIDEO INTERCOM

**VEX-B21A****IP Building Video Intercom Outdoor console**

ZKTeco's VEX-B21A is a smart outdoor video station with Android operating system that seamlessly integrates video intercom capabilities with facial recognition, offering a comprehensive access control solution. The VEX-B21A supports multiple verification methods, including facial recognition, IC card reader, and PIN code password. This intelligent outdoor station features a 2MP CMOS camera with a 100° wide viewing angle and a white LED supplement light, ensuring clear visuals in all lighting conditions.

Furthermore, the VEX-B21A enables two-way communication with visitors via indoor monitors, facilitating identity verification before granting access.

**VT07-B22L****IP Building Video Intercom Indoor Monitor****Device Specifications**

- Face capacity: 10 000
- Card capacity: 30 000
- Communication: TCP/IP
- IP Rating: IP65
- Software: Bio CVSecurity

**Accessories**

- Electric Locks
- Door Sensors
- Exit Button
- 12V Power Supply
- Wiegand Slave readers
- RS485 Slave readers
- Sirens/Buzzers
- VT07-B22L

## TIME &amp; ATTENDANCE STANDALONE DEVICES

To function effectively as a Time and Attendance solution, a device must meet several essential requirements. First, it must include a reliable method for identifying individuals, which can be achieved through biometric verification or PIN/card credentials. Next, the device must be capable of storing each transaction after identification, ensuring the data includes a unique identifier for the individual as well as the time and date of the interaction. Additionally, the device should feature an interface that displays the current time and date, and allows individuals to view their information after successful identification.

Lastly, the device must support data export capabilities, either via USB or through integration with software, enabling seamless payroll processing and working hour calculations.

ZKTeco's attendance devices meet all these requirements and go beyond, offering enhanced features to simplify and optimise attendance management with greater efficiency.



### Horus E1

The Horus E1 is one of our most advanced time and attendance terminals. It has a compact size, powerful facial recognition technology with a recognition distance of up to 3 meters and pose angle tolerance of  $\pm 30$  degrees, high anti-spoofing ability, and support for various communication protocols. It also has optional fingerprint and RFID card modules, a capacity for up to 10 000 facial templates, and is compatible with BioTime.

#### Accessories

- 12V Power Supply
- Att Push SDK
- Stand Off Box

#### Device Specifications

- Face capacity: 6000
- Fingerprint capacity: 6000 (Special Order)
- Card capacity: 10 000 (Special Order)
- Communication: Wi-Fi / 4G
- Software: BioTime



### Horus H1

The Horus H1 is a handheld mobile time and attendance terminal designed for versatile use. With the rechargeable 5200mAh Li-ion battery, Horus H1 can operate for 5 hours on a single charge. Also, the high-capacity battery provides ample power to support Horus H1 to perform hybrid biometric verifications, including facial recognition, fingerprint verification, NFC, and QR code management.

#### Accessories

- Type C Charging Cable
- ATT Push SDK
- Docking Station

#### Device Specifications

- Face capacity: 50 000
- Fingerprint capacity: 30 000 (Horus H1 FP)
- Card capacity: 50 000 (NFC)
- Log capacity: 1000 000
- Communication: Wi-Fi/4G
- IP Rating: IP65
- Software: BioTime, Bio CVSecurity (Attendance Module)
- 5200mAh Battery



### S922

The S922 is specifically designed for off-site time management, such as construction sites, logistic industries, large farms, and the mining industry. The top handle with rubber coating enables users to carry easily.

#### Accessories

- 12V Power Supply
- Att Push SDK

#### Device Specifications

- Fingerprint capacity: 50 000
- Card capacity: 50 000
- Log capacity: 800 0000
- Communication: TCP/IP/Wi-Fi (Optional)/4G (Optional)/USB
- IP Rating: IP65
- Software: BioTime



### IN01-A

IN01-A is a 2.8-inch TFT screen Time Attendance & Access Control Terminal. Adopting a user-friendly interface, this device has an accelerated identification and verification speed. The built-in 2000mAh backup battery provides the IN01-A with power during power outages.

#### Accessories

- Electric Locks
- Door Sensors
- Exit Button
- 12V Power Supply
- Wiegand Slave readers
- RS485 Slave readers
- Sirens/Buzzers
- Att Push SDK

#### Device Specifications

- Fingerprint capacity: 3000
- Card capacity: 10 000
- Log capacity: 100 000
- Communication: TCP/IP/Wi-Fi (Optional)/4G (Optional)
- Software: BioTime

## VEHICLE ENTRANCE CONTROL

Vehicle entrance control refers to a comprehensive system of mechanisms and technologies designed to manage and regulate the entry and exit of vehicles within designated areas, such as parking facilities, gated communities, commercial properties, or secure installations. Its primary objectives are to enhance security, ensure authorised access, and facilitate the effective monitoring of vehicle movements.

## VEHICLE ENTRANCE CONTROL - LPR

**DL-852Q28B-LP****License Plate Recognition Camera**

ZK-LPR Car ID is next step in ZKTeco's access control system technology for an efficient and simple vehicle access management, delivering, faster & easier set-up and allowing customers to achieve high performance with lower installation, maintenance and off-site programming costs.

**Device Specifications**

- Effective Pixels: 1920\*1080 (2MP)
- IR Distance: 50m
- WDR: TWDR
- Communication: TCP/IP
- IP Rating: IP67
- Software: Bio CVSecurity, AntarVis 2.0, AntarView Pro
- Supports ONVIF streaming
- Supports POE

**BL-852Q38A-LP****License Plate Recognition Camera**

ZK-LPR Car ID is next step in ZKTeco's access control system technology for an efficient and simple vehicle access management, delivering, faster & easier set-up and allowing customers to achieve high performance with lower installation, maintenance and off-site programming costs.

**Device Specifications**

- Effective Pixels: 1920\*1080 (2MP)
- IR Distance: 50m
- WDR: TWDR
- Communication: TCP/IP
- IP Rating: IP67
- Software: Bio CVSecurity, AntarVis 2.0, AntarView Pro
- Supports ONVIF streaming
- Supports POE

## VEHICLE ENTRANCE CONTROL - LONG RANGE RFID READERS

**U1000 & U2000**

U1000 and U2000 are long distance RFID access control readers which integrate functions of UHF readers and controllers. Compared with UHF readers, they increase access control functions and support TCP/IP communication, Wiegand in/out, two relays, 3rd party electric lock, door sensor, exit button, which enable easy installation and convenient use.

**Accessories**

- Electric locks
- Loop Detector
- 12V Power Supply
- Wiegand Slave readers
- Sirens/buzzers
- Acc Push SDK

**Device Specifications**

- Card capacity: 5000
- Log capacity: 30 000
- Communication: TCP/IP
- Software: Bio CVSecurity
- Reading Range: 0-6m (U1000) 0-12m (U2000)
- IP rating: IP66

**UHF5E Pro & UHF10E Pro | Slave Readers**

UHF5E Pro and UHF10E Pro are ZKTeco's third-generation UHF readers, with improved performance, longer reading distance, and faster recognition speed.

The UHF Pro meets the CE and FCC technology requirements. The UHF Pro support's two working modes: Trigger to Read & Always Read (Default). The LED at the bottom of readers indicate the reading status (7-color indicators: red, green, blue, yellow, cyan, purple, white)

**Device Specifications**

- Reading Range: 2-8m (UHF5E) 10-20m (UHF10E)
- IP rating: IP66
- Support Wiegand and RS485



**UR20RW-E - Accessory**  
USB UHF Card Issuer

The card issuer can read and write the labels and cards which support EPC global UHF Class 1 Gen 2 and ISO 18000 6C standard. Its USB interface adopts the advanced plug and play interface without driver core technology to connect computer and other equipment. The card issuer control chip is provided with a watchdog and a voltage detection circuit, and has the advantage of stable reading performance.

Device Specifications

- Wiegand 26 output (Default)
- Wiegand 26-98 (Optional)
- USB power supply
- With antenna, active card search mode
- Adopts advanced plug and play interface

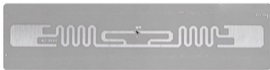
UHF TAGS



**UHF1-Tag3**  
UHF Numberplate Tag



**Higgs 3**  
WS Label (Higgs 3) by Alien

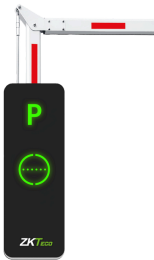


**UHF1-Tag3**  
WS Label Tamperproof (Higgs 3) by Alien



**ZK UHF Tag**  
UHF Tag Sticker by ZKTeco

VEHICLE ENTRANCE CONTROL - PARKING GATES + ACCESSORIES



**BG1000 | High-Level**

The ZKTeco BG1000 is a high-performance parking barrier gate designed for fast and efficient vehicle access control. With a sleek, durable design, it supports boom lengths up to 6 meters and offers adjustable opening and closing speeds. Ideal for parking lots and gated entrances, the BG1000 features advanced safety sensors and robust construction for reliable operation in various environments.

Supported Accessories

- LPRS1000
- VR10 Radar
- PSA02 Loop Detector
- UHF5/10 Pro

Device Specifications

- Interactive chassis with LED indicator
- Operating Speed: 1.5 - 5s
- Boom Arm Length: 3-6m
- Telescopic straight boom arm
- IP54 Ingress Protection Level
- 24V brushless DC electric motor
- MCBF count (3 million)



**BGM400 | Entry-Level**

The BGM400 series barrier gate is driven by high-performance brushless DC motor, stable running, low noise, stable and reliable performance. The main control board is rich in functions and is widely used in most of ZKTeco's gate barriers.

Supported Accessories

- LPRS1000
- VR10 Radar
- PSA02 Loop Detector
- UHF5/10 Pro

Device Specifications

- Opening Speed: 1.5s to 6s
- Boom Arm Length: 3m to 6m
- IP rating: IP54
- Motor Type: 24V Brushless DC motor
- Rated Current 10A
- Motor MCBF: 2 million
- Power Supply: 220V A



### VR10 Pro – Accessory

Through linkage with the main board of the barrier gate, VR10 Pro can help prevent vehicles from smashing into any obstacles or damaging any properties or passers-by while allowing automatic boom closing. Compared to the loop detector, it offers flexible installation and lower labor costs. Also, users could set parameters of VR10 Pro with a mobile app (Radar Assistant) when connected to Bluetooth.

### Device Specifications

- Vehicle and pedestrian detection
- Supports Bluetooth communication
- Supports RS485 communication
- Flexible installation
- Works normally under ambient weather conditions (IP67).
- Detection distance: 1-6m
- Supports straight boom

## PEDESTRIAN ENTRANCE CONTROL

Pedestrian entrance control encompasses the systems and strategies employed to manage and regulate the entry of individuals into buildings, areas, or restricted zones. These systems often include physical access solutions such as full-height turnstiles, tripod turnstiles, swing gates, flap barriers, and similar mechanisms designed to ensure secure and efficient entry management.

## PEDESTRIAN ENTRANCE CONTROL – SWING GATES / SPEED GATES



### Comet Series

#### Innovative Multi-Credential Speed Gate

The ZKTeco Comet Series is an innovative multi-credential speed gate with a sleek, transparent design, perfect for corporate settings. Available in single-lane and double-wing options, it features a lightweight yet robust cast aluminium alloy chassis, customisable RGB lighting, and easy installation. Advanced facial recognition, multi-height support, and biometric, RFID, and QR code compatibility ensure seamless access. With flexible configurations and enhanced safety features, the Comet Series delivers cutting-edge security and style.

### Device Specifications

- Face capacity: 50 000
- Card capacity RFID EM 125 KHz: 3000
- Transaction capacity: 100 000
- Authentication: Fingerprint/QR/RFID
- Power: 220VAC
- Software: Bio CVSecurity
- Colour: Silver



### SBT2000S

#### Single-lane Swing Barrier

The ZKTeco SBT2000S Series is a cost-effective, wide-passage swing barrier system ideal for accommodating large parcels and individuals with physical disabilities. Featuring an 800mm lane width, smooth and quiet operation, and low power consumption, it ensures reliable performance. Safety is enhanced with bottom infrared sensors to prevent accidental injuries, while the barrier allows manual opening during power outages for added convenience.

### Device Specifications

- Lane Width 800mm
- MCBF 5 million
- Power Supply: AC 220V
- Infrared Sensor
- Designed for Large parcel delivery and users with Physical Disabilities

## PEDESTRIAN ENTRANCE CONTROL – FULL HEIGHT TURNSTILES



### FHTSA2400

The FHTSA2400 Heavy Duty Full Height Single 4 Arm Turnstile is designed for robust security and reliable access control. This turnstile features a heavy-duty construction, making it ideal for high-traffic areas and environments requiring enhanced security measures.

Locally Manufactured in South Africa

### Device Specifications

- Four arms (90°), Mild steel, Powder coated Grey
- Single lane
- Contains driver control board and power supply



**FHTSA2400 D**

The FHTSA2400 D Heavy Duty Full Height Double 4 Arm Turnstile is designed for robust security and reliable access control. This turnstile features a heavy-duty construction, making it ideal for high-traffic areas and environments requiring enhanced security measures. Ideal for Industrial facilities, corporate and government security and Public transportation applications.

Locally Manufactured in South Africa

**Device Specifications**

- Four arms (90°), Mild steel, Powder coated Grey
- Dual lane
- Contains driver control board and power supply

PEDESTRIAN ENTRANCE CONTROL - TRIPOD TURNSTILES



**TS1000 Pro**

Bi-directional tripod turnstile with arm drop function

Our Pro series tripod turnstiles represent classic and safe ways to protect your premises. They are widely used in various indoor environment applications. They fit perfectly as an economical option into office buildings and other related applications.

**Device Specifications**

- SUS304 Stainless Steel Housing
- Low power consumption
- Easy and simple installation process
- Authentication: Fingerprint & RFID



**TS2000 Pro**

Bi-directional tripod turnstile with arm drop function

Our Pro series tripod turnstiles represent classic and safe ways to protect your premises. They are used in various indoor environment applications. They fit perfectly as an economical option into office buildings and other related applications.

**Device Specifications**

- SUS304 Stainless Steel Housing
- Low power consumption
- Easy and simple installation process
- Authentication: Fingerprint & RFID



**MTS100**

Standard Four Arm Full Height Double Turnstile

Our Pro series tripod turnstiles represent classic and safe ways to protect your premises. They are used in various indoor environment applications. They fit perfectly as an economical option into office buildings and other related applications.

**Device Specifications**

- SUS304 Stainless Steel Housing
- Low power consumption
- Easy and simple installation
- Authentication: Fingerprint & RFID

PEDESTRIAN SECURITY INSPECTION

Pedestrian security inspection involves the systematic evaluation and monitoring of individuals as they enter or navigate within a designated area. This process aims to ensure safety and identify potential security risks, making it particularly vital in environments such as airports, secure facilities, public events, and other locations requiring heightened security measures.



**D160**

Handheld Metal Detector

The ZKTeco D160 Handheld Metal Detector is a portable and reliable security tool designed for precise and efficient detection of metal objects. Lightweight and user-friendly, it features adjustable sensitivity, an ergonomic design, and audio or vibration alerts, making it ideal for governments, events, and security checkpoints.

**Device Specifications**

- Frequency: 135 kHz
- Features: Low Sensitivity Selector Audio Visual Indicator
- Power: 7-9 VDC
- Includes: Battery and Charger



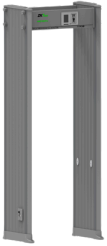
### D1065

#### 6 Zone Walk-Through Metal Detector

The ZKTeco D1065 Walk-Through Metal Detector offers advanced security with 6 detection zones and 100 adjustable sensitivity levels. Featuring a 3.5" LCD display, people and alarm counting, and synchronized sound and LED alerts, it ensures precise and efficient screening for enhanced safety in high-traffic areas.

#### Device Specifications

- Zones: 6
- Display: Monochrome LCD
- Frequency: 4.8kHz
- Features: 100 Sensitivity Levels per Zone Alarm & People Counter
- Power: 100-240 VAC 50/60Hz



### AMD1800

#### 18 Zone Walk-Through Metal Detector with IP65 Rating

The ZKTeco AMD1800 Walk-Through Metal Detector delivers high-performance security with 18 detection zones and 256 adjustable sensitivity levels per zone. Equipped with a 3.5" LCD display, alarm, and people counters, it ensures accurate and efficient screening. Powered by 100-240 VAC, it's ideal for enhancing safety in busy environments.

#### Device Specifications

- Zones: 18
- Display: 3.5 LCD
- Features: 256 Sensitivity Levels per Zone Alarm & People Counter
- Power: 100-240 VAC



### D4330

#### 33 Zone Walk-Through Metal Detector

The ZKTeco D4330 Walk-Through Metal Detector offers advanced security with 33 detection zones and 300 adjustable sensitivity levels per zone. Featuring a 7" HD LCD display, 4.8 kHz operating frequency, and integrated alarm and people counters, it provides precise and efficient screening. Powered by 100-240 VAC, it's perfect for high-security environments.

#### Device Specifications

- Zones: 33
- Display: 7 HD LCD
- Frequency: 4.8 kHz
- Features: 300 Sensitivity Levels per Zone Alarm & People Counter
- Power: 100-240 VAC 50/60Hz



### D2110

#### 11 Zone Walk-Through Metal Detector

The ZKTeco D2110 Walk-Through Metal Detector ensures reliable security with 11 detection zones and 256 adjustable sensitivity levels. It features a 3.5" TFT color screen, clear threat indicators with synchronized sound and LED alerts, and an operating frequency range of 5.7kHz to 9.6kHz. Powered by AC 100-240V, it's ideal for efficient and precise screening.

#### Device Specifications

- Zones: 11
- Display: 3.5" TFT Color Screen
- Frequency: 5.7kHz to 9.6kHz
- Features: 256 Sensitivity Levels
- Clear threat indicator with synchronous sound alert and LED indicator
- Power: AC 100V to 240 V

## PEDESTRIAN SECURITY INSPECTION - X-RAY



### ZKX5030A

#### 507mm x 305mm Tunnel Size Single Energy X-Ray Inspection System

The ZKX5030A features a high quality and reliable X-ray generator. The advanced image algorithm offers crystal clear images, allowing operators to visually identify potential threats so much quicker. The ergonomic design will fit into and compliment a whole range of industries.

#### Device Specifications

- Tunnel Size: 507mm x 305mm
- Tube Voltage: 80 Kv
- Dosage: <1uGy
- Wire Resolution: 34AWG
- Penetration: 8mm Steel Board
- Film Safety: ASA/ISO 1600
- Monitor: 17 LED



### ZKX5030C

#### 507mm x 305mm Tunnel Size Single Energy X-Ray Inspection System

The ZKX5030C features a high quality and reliable X-ray generator. The advanced image algorithm offers crystal clear images, allowing operators to visually identify potential threats so much quicker. The ergonomic design will fit into and compliment a whole range of industries.

#### Device Specifications

- Tunnel Size: 507mm x 305mm
- Tube Voltage: 140 KV
- Dosage: <1uGy
- Wire Resolution: 38AWG
- Penetration: 32mm Steel Board
- Film Safety: ASA/ISO 1600
- Monitor: 21.5 inch LED



### ZKX6550A

#### 655mm x 505mm Tunnel Size Single Energy X-Ray Inspection System

The ZKX6550A is a single-energy X-ray machine that uses a reliable high-quality X-ray generator to produce true colour and clear scanning images. These images allow operators to identify potential threat items visually and make quick, accurate decisions. This unit also features a biometric identification function, improving the security of the system and holding operators accountable for their work by making sure that no-one apart from the operator can operate and view the system.

#### Device Specifications

- Tunnel Size: 655mm x 505mm
- Tube Voltage: 100 Kv
- Dosage: <1uGy
- Wire Resolution: 34AWG
- Penetration: 10mm Steel Board
- Film Safety: ASA/ISO 1600
- Monitor: 21.5 inch LED



### ZKX6550D

#### 655mm x 505mm Tunnel Size Dual View X-Ray Inspection System

The ZKX-6550 is a dual-energy X-ray machine and uses a reliable high-quality dual X-ray generator to produce true colour and clear scanning images. These images allow operators to identify potential threat items visually and make quick, accurate decisions. It can detect organic, inorganic or mixtures of both substances. The powerful dual X-ray generator is also able to detect overlapping items accurately.

#### Device Specifications

- Tunnel Size: 655mm x 505mm
- Tube Voltage: 160 KV
- Dosage: <1uGy
- Penetration: Bottom Generator: 38mm \ Side Generator: 38mm
- Film Safety: ASA/ISO1600
- Monitor: 21.5 inch LED x 2



### ZKX10080

#### 1006mm x 803mm Tunnel Size X-Ray Machine

The ZKX10080 X-ray machine increases the operator's ability to identify potential threats; the device scans objects up to 100 x 80cm. The ZKX10080 uses a reliable high-quality dual-energy x-ray generator to produce clear scanning images that allow operators to identify potential threat items visually. Also, the ZKX10080 is equipped with a lowered conveyor height to make it easier for operators to place luggage on the device.

#### Device Specifications

- Tunnel Size: 1006mm x 803mm
- Tube Voltage: 150 Kv
- Dosage: 0.2  $\mu$  Gy/h (5cm from the surface)
- Penetration: 34mm Steel Board
- Film Safety: ASA / ISO1600 standard of film safety
- Monitor: 21.5 inch LED X 2



### Blade6040

#### 610mm x 420mm Tunnel Size X-Ray Machine

The Blade6040 is an X-ray baggage inspection system which has a tunnel size of 610 mm by 420 mm and can provide effective inspection of mail, hand-held baggage, luggage and other items. It allows identification of weapons, liquids, explosives, drugs, knives, fire guns, bombs, toxic substances, flammable substances, ammunition, and dangerous objects, which are safety hazards by identification of substances with an effective atomic number.

#### Device Specifications

- Tunnel Size: 610mm x 420mm
- Tube Voltage: 150-170 kV (adjustable)
- Single Inspection Dosage Rate:  $\leq 1.0 \mu$ Gy
- Wire Resolution: 38AWG guaranteed, 40AWG typical
- Penetration: 38mm guaranteed, 40mm typical
- Film Safety: ASA / ISO1600 standard of film safety
- Monitor: 21.5 inch LED

## SMART LOCKS

A Smart Lock is an electromechanical lock which allows you to open and lock your doors with a virtual key of fingerprint, face, pin code or RFID card, putting an end to problem of lost keys and enabling an array of intelligent and useful features.

In 2006, ZKTeco stepped into the Smart Lock industry with its cutting-edge biometric technology to provide security and convenience for home and office applications.

Over the years our Smart Lock technology evolved, and we started to integrate Bluetooth so that the locks can be managed with a mobile device. Afterwards integration with Wi-Fi into the Smart Locks allowed remote management. Now, we have evolved the technology a step further, where the locks can be managed using our all-in-one Bio CVSecurity platform.

**ML100****Standalone Fingerprint Wi-Fi Smart Lock**

The ZKTeco ML100 Smart Lock, designed with a European Standard 5050 mortise, offers advanced access control via the ZSmart APP. It connects to Wi-Fi for remote unlocking, password sharing, user management, and activity tracking. With multiple unlocking options, including fingerprint, IC card, and passcode, the ML100 is an ideal solution for secure and convenient door management in apartments and private homes.

**Device Specifications**

- Users: 300
- Fingerprint/Pin/Card/App/Mechanical Key
- Communication: Wi-Fi
- Power: 4 x AA Alkaline Battery (not included)
- Features: Remote open, random pin, Timed access rights, Normally open, low battery alarm, doorbell, manual key
- Mobile App: ZSmart App
- Compatibility Door Thickness: 35 to 60mm

**SL01C1-20K****Standalone Smart Cylinder Lock Pin + RFID Bluetooth**

The ZKTeco SL01-C1-20K Smart Electronic Cylinder upgrades mechanical locks with ease—no wiring or drilling required. Compatible with the ZSmart APP, it offers versatile access via PIN, IC card, NFC, app, or mechanical key. Features include a USB Type-C emergency charging port and support for temporary access, making it a convenient and secure locking solution.

**Device Specifications**

- Users: 100
- Pin/IC Card/App/Mechanical Key
- Communication: BLE 5.0 (Bluetooth)
- Power: CR123A Battery (not included)
- Features: Remote open, Timed Access Rights, Low Battery Alarm, Manual Key, Random Pin
- Mobile App: ZSmart App
- Compatibility Door Thickness: 70mm

**SL01C1-21H****Standalone Smart Cylinder Lock Fingerprint + RFID Bluetooth**

The ZKTeco SL01-C1-21H Smart Electronic Cylinder upgrades mechanical locks with ease—no wiring or drilling required. Compatible with the ZSmart APP, it offers versatile access via Fingerprint, IC card, NFC, app, or mechanical key. Features include a USB Type-C emergency charging port and support for temporary access, making it a convenient and secure locking solution.

**Device Specifications**

- Users: 100
- Fingerprint/IC Card/App/Mechanical Key
- Communication: BLE 5.0 (Bluetooth)
- Power: CR123A Battery (not included)
- Features: Remote open, Timed Access Rights, Low Battery Alarm, Manual Key, Random Pin
- Mobile App: ZSmart App
- Compatibility Door Thickness: 70mm

## HOTEL LOCKS

ZKTeco Hotel Solutions contains multiple integrated modules: hotel, access control, elevator control, personnel, and other modules to manage the entire hotel, truly achieving smart deployment, smart operation, and smart check-in.

The authorisation to unlock the smart hotel door lock, access control, and the rights to take the elevator interrelate with the hotel module. It realises real-time remote control, remote monitoring, and remote record checks. Both hotel staff and guests could enjoy the "One-Card-Solution" in ZKTeco's hotel solutions. The card becomes a gateway to everything the hotel has to offer its guests.

**LH3000****Mifare Hotel Lock**

The LH3000 Hotel Lock features advanced 13.56MHz Mifare-1 card technology and a robust American standard mortise with 5 latches. Crafted with durable stainless steel in a sleek silver finish, it includes professional hotel lock management software for easy setup. With an audit trail for the last 224 transactions, low-battery warnings, and a 62.5mm backset, it's a reliable and efficient solution for modern hotels.

**CR60W****Card Encoder for Hotel Locks  
13.56MHz USB Writer****Device Specifications**

- Verification: 13.56MHz Mifare-1 Card
- Power Supply: AA Alkaline x 4
- Battery Life: 1 Year on average usage
- Software: ZKBioSecurity V3.2
- Mortise: American Standard
- Door Type: Wood

**LH4000****Mifare Hotel Lock**

The LH4000 Hotel Lock features advanced 13.56MHz Mifare-1 card technology and an American standard mortise with 5 latches. Designed with a zinc alloy housing and bright chrome finish (outdoor unit), it includes professional hotel lock management software for easy setup. With an audit trail of the last 224 transactions, low-battery alerts, and a 70mm backset, it's a stylish and reliable choice for modern hotel security.

**CR60W****Card Encoder for Hotel Locks  
13.56MHz USB Writer****Device Specifications**

- Verification: Card
- Power Supply: AA Alkaline x 4
- Battery Life: 1 Year on average usage
- Software: ZKBioSecurity V3.2
- Mortise: American Standard
- Door Type: Wood

## HLMS HOTEL LOCKS &amp; ACCESSORIES

**ZL500****Smart Hotel Lock**

The ZKTeco ZL500 is an advanced wireless hotel lock compatible with ZKBioSecurity software (ZKBioHLMS), enabling real-time remote monitoring of room and gateway status. With a one-card solution and open API for third-party integration, it creates a contactless environment, ideal for enhancing efficiency and convenience in luxury hotels. This innovative solution improves both guest and workforce experiences in the hospitality industry.

**Device Specifications**

- Verification: Card
- Power Supply: AA Alkaline x 4
- Battery Life: 1 Year on average usage
- Software: ZKBioHLMS
- Mortise: American Standard
- Door Type: Wood

**D147-H - Accessory****Mifare Card Enrollment Reader****SLG410 - Accessory****ZIGBEE Gateway for  
Wireless Hotel Locks**

## LOCKER SOLUTION

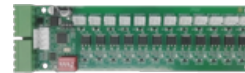
**Locker Pad G4 Pro****Locker Management Solution**

ZKTeco developed a networked electronic delivery locker module, the LockerPad-G4 Pro, offering a reliable, secure, and convenient locker system. LockerPad-G4 Pro integrates with Bio CVSecurity to manage and give access to lockers without a key, ensuring storage safety and enhancing convenience.

The LockerPad-G4 Pro is embedded with a 7-inch colour touch screen display, creating an easy-to-manage self-service terminal for parcel and personal belongings storage. In addition, LockerPad-G4 Pro supports digital advertisements (image & video), which can drive foot traffic and sales effectively

**Device Specifications**

- Face capacity: 50 000
- Card capacity: 50 000
- Log capacity: 100 000
- Communication: TCP/IP/Wi-Fi
- Software: Bio CVSecurity
- Cabinet Capacity: 96 (8 Locker Control Boards)

**Locker Control Board**

## ACCESSORIES

**X00102002 (13.56MHz Mifare-1 Card)****CR80 (Plain PVC Card)****X00101002 (Thin 125kHz Proximity Card)****S70 (13.56MHz 4K Mifare Proximity Tag)****X00101005 (125kHz Proximity Tag)****S50 (13.56MHz 1K Mifare Proximity Tag)****InBio Pro Plus Metal Case****X00101005 | USB Interface (Read 13.56MHz Mifare card number)****S50 | USB Interface (Read 125K Proximity card number)****TLEB101 | No Touch Exit Sensor****TLEB102 | No Touch Exit Sensor****LMB-280ZL | Door Sensor**



**LM-2805 | Electric Lock**



**DC6085 | Door Closer  
(Medium Duty)**



**FR02-1 (Green Call Point -  
Resettable)**



**12VMiniUPS**



**12V3A Switchmode  
Power Supply**



**P1205-B2 | Power Supply (12V  
7Ah battery not included)**



**P1203-B2 | Power Supply (12V  
7Ah battery not included)**



**BA13 | Battery (12V)**



**CR60W (Card Encoder for Hotel  
Locks - 13.56MHz USB writer)**



**D147-H (Hotel IC Card Encoder)**



**SLG410 (ZIGBEE Gateway for  
Wireless Hotel Locks)**



**UR20RW - E/F (USB UHF Card  
Issue)**



**VT07-B01 (IP Video Intercom  
Indoor Monitor)**



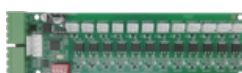
**VT07-B22L (IP Building Video  
Intercom Indoor Monitor)**



**VR10 Pro (Vehicle and  
Pedestrian Radar Sensor)**



**DEX16 (Elevator Floor  
Expansion Board)**



**Locker Control Board**



**RS100**



UV-200



SLK20R



SLK20M



ZK9500



SRB (Security Relay Box)

RAINSHIELDS & STAND OFF BOXES

COMING SOON

SenseFace 2A Stand Off Box



SpeedFace V3L Lite Stand Off Box



F35 Rainshield



F35 Stand Off Box



SpeedFace M4 Rainshield



SpeedFace M4 Stand Off Box



SpeedFace V5L Stand Off Box



SpeedFace V4L Pro Stand Off Box



F17 Rainshield



F17 Stand Off Box



F22 Stand Off Box



ProMA Rainshield



ProMA Stand Off Box



ProFace X Rainshield



ProFace X Stand Off Box

FACEKIOSK



**FaceKiosk-H13C**  
Android Multi-Purpose Facial Recognition Kiosk

FaceKiosk-H13C, our 13.3-inch touch screen, multipurpose facial recognition Android Kiosk, is designed to provide a friendly and interactive user experience by incorporating facial, fingerprint, label printing, QR code, and RFID modules.

The FaceKiosk-H13C is used with Bio CVSecurity to act as a self service station for Visitor Registration and Visitor Check-in. ZKTeco also offers an EDDK for the FaceKiosk-H13C allowing you to develop your own application and solution utilising the FaceKiosk-H13C.

Device Specifications

- User capacity: 500
- Fingerprint capacity: 5000
- Visitor capacity: 9500
- Face capacity: 10 000
- Communication: TCP/IP, WiFi, Bluetooth, 3G/4G
- Operation System: Android 9
- Software: Bio CVSecurity

## SOFTWARE



## ZKBIO CVSECURITY

ZKBio CVSecurity delivers a web-based security platform which integrates biometric authentication and advanced computer vision technology seamlessly. ZKBio CVSecurity enables organisations of all sizes to transform their physical security infrastructure while streamlining daily operations.

ZKBio CVSecurity offers solutions for Access Control, Time & Attendance, Visitor Management, Parking Management, Elevator Control, Video Management, Locker Management and much more.

ZKBio CVSecurity also integrates into multiple other systems like Artec, Bosch, Risco, Kone, Google Map, WhatsApp and more. With ZKBio CVSecurity API, you can integrate into the platform seamlessly.

**Supported Operating system:** Windows 7/8/10/11, Windows Server 2008/2012/2016/2019/2022

**Supported Browser:** Chrome, Firefox, Safari, Edge, Internet Explorer.

**Supported Database:** psql, Oracle, MSQl



## BIOTIME

BioTime is a powerful web-based time and attendance management software that provides a stable connection to ZKTeco's standalone push communication devices with Ethernet/Wi-Fi/GPRS/3G/4G and working as a private cloud to offer employee self-service by mobile application and web browser. Multiple administrators can access ZKBio Time anywhere with a web browser. As a result, BioTime can easily handle hundreds of devices, thousands of employees and their transactions.

BioTime comes with an intuitive user interface that can manage timetable, shift and schedule and quickly generate attendance reports. BioTime attained ISO certifications for information security management and data protection measures. ZKBio Time is compliant with ISO/IEC 27001:2013, ISO/IEC 27701:2019 & ISO9001.

**Supported Operating system:** Windows 8/8.1/10/11, Windows Server 2012/2016/2019/2022

**Supported Browser:** Chrome, Firefox, Internet Explorer.

**Supported Database:** psql, Oracle, MSQl, MySQL



## WTMD

WTMD is ZKTeco's Walk Through Metal Detector Management Software. WTMD allows you to connect to ZKTeco Metal detectors allowing you to monitor them and configure them from the software.

## ZKBioHLMS

ZKBio Hotel Lock Management System (HLMS) is an App-free hotel lock management solution created by ZKTeco. The system is comprehensive and highly secure, convenient, and efficient for hotels. Guests staying at the hotel can use their smartphone as a "room key" and the user-friendly HTML5 interface to check in and request room services. Prior to their stay, guests can access the ZKBioHLMS by clicking on the hyperlink sent to them via SMS or email from ZKTeco's cloud server.

ZKBioHLMS uses zigbee communication for real-time remote control, remote monitoring, and remote record checks of deployed hotel locks. This system allows the hotel to manage its locks more effectively. Additionally, our hotel lock management system has an access control feature, which allows the hotel to control who has access to different areas of the hotel. The system can ensure safety and security of guests and staff.

ZKBioHLMS also includes a module for controlling elevator access. This module allows the hotel to control who can use the elevator and prevent unauthorised access. ZKBioHLMS is an ideal option for hotel businesses by simplifying guest management and enhancing hotel safety and security

## DEVELOPMENT - PUSH SDK

### ACC PUSH

Integrate into ZKTeco's Access Control devices using the Access Push Protocol. The Access Push Protocol allows you to communicate directly with the devices enabling you to send and download personal information to and from the devices with a secure communication protocol. The Access Push Protocol also allows you to configure the devices parameters and allows you to control the devices from your application. We offer a C# and Java demo application that demonstrates how the Push Protocol works and comprehensive documentation to guide you.

### ATT PUSH

Integrate into ZKTeco's Time & Attendance devices using the Attendance Push Protocol. The Attendance Push Protocol allows you to send employees to the devices with their allocated time zones when they are allowed to clock in and out, while also allowing you to download the employee transactions through a secure communication protocol. The Attendance Push Protocol also enables you to configure the devices parameters and allows you to control the devices from your application. We offer a C# and Java demo application that demonstrates how the Push Protocol works and comprehensive documentation to guide you.

## DEVELOPMENT - BIOMETRIC SDK

### FINGERPRINT SDK

The ZKFinger SDK allows you to develop your own application utilising ZKTeco Fingerprint scanners. It's compatible with the SLK20R and the ZK9500. There are Windows, Linux and Android versions for the SDK allowing you to develop on your preferred OS. There are driver, development documents and Demo applications for this SDK that will assist you with your development.

## DEVELOPMENT - ANDROID

### ANDROID EDK


The Android EDK allows you to tap into ZK services on ZKTeco's range of Android devices, allowing you to manage and utilise ZKTeco hardware with your own applications.


# GET IN TOUCH

TRANSFORM YOUR SECURITY WITH ZKTECO

---

## HEAD OFFICE - ZA

 Unit 8B, Eco Square, 298  
Witch-Hazel Ave,  
Centurion, 0144

 012 259 1047

 [info@zkteco.co.za](mailto:info@zkteco.co.za)

## SALES

 012 259 1047


 [sales@zkteco.co.za](mailto:sales@zkteco.co.za)

## SUPPORT

 012 259 1047

 [support@zkteco.co.za](mailto:support@zkteco.co.za)

## REPAIRS

 012 259 1047

 [repairs@zkteco.co.za](mailto:repairs@zkteco.co.za)