

# Manual

## 3Dconnexion® CadMouse Pro Wireless



Driver Version: 3DxWare 10.8.8 and higher

# Table of Content

<b>QuickStart Guide .....</b>	<b>3</b>
Desktop Setup .....	3
Installation .....	3
<b>Feature Guide .....</b>	<b>4</b>
3Dconnexion CadMouse Pro Wireless .....	4
<b>3Dconnexion Settings .....</b>	<b>7</b>
Advanced Settings .....	8
Buttons .....	9
Assigning Quick Macros to buttons .....	9
Assigning Commands using the flyout window .....	10
Creating Macros .....	10
Creating Radial Menus .....	11
<b>3Dconnexion Home .....</b>	<b>12</b>
<b>Technical Specifications .....</b>	<b>13</b>
<b>Safety, Compliance and Warranty Information .....</b>	<b>14</b>

# QuickStart Guide

## Desktop Setup



Place your CadMouse Pro Wireless on the right side of the keyboard.

## Installation



### 1. Connect

Connect the included 3Dconnexion Universal Receiver to your computer.

### 2. Turn on the CadMouse Pro Wireless

Turn on the power switch located on the bottom of your CadMouse Pro Wireless.

**Note:** Ensure the device is in Universal Receiver mode (LED next to the receiver icon is blue).

### 3. Download and install the latest software package

Make sure you have the latest 3Dconnexion software (3DxWare) installed. The latest version can be downloaded at [3dconnexion.com/drivers](http://3dconnexion.com/drivers).

### 4. Register your product

Register your product after the installation to benefit from 3Dconnexion services.

# Feature Guide

## 3Dconnexion CadMouse Pro Wireless



### Middle Mouse Button



The CadMouse Pro Wireless features a dedicated Middle Mouse Button that helps you quickly access important application functions. It instantly recognizes the applications you are using, as well as their environments, and automatically assigns commands to the Button.

Functionality of the Middle Mouse Button in the following applications and environments:

**CAD applications:** Use the Middle Mouse Button to navigate (pan, zoom, orbit) within your drawings or 3D models.

**Windows:** Middle click an application icon on the Windows taskbar to open the application in a new window. To close the application, simply hover over the it's icon and then middle click the appearing thumbnail.

**Internet browsers:** Use the Middle Mouse Button to open a link in a new tab. To close a tab, simply click on it with the Middle Mouse Button.

**Other applications:** Use the 3Dconnexion Settings to assign your most frequently used commands to the Middle Mouse Button. You can, for example, assign the *Format Painter* command to the Middle Mouse Button in Microsoft Word or the *Enter* command in Microsoft Excel.

**Note:** The 3Dconnexion driver (3DxWare) is needed to utilize all the functions of the CadMouse Pro Wireless.

## Thumb Buttons



Your CadMouse Pro Wireless comes with two Thumb Buttons, which help you navigate in CAD as well as in other applications. The CadMouse instantly recognizes the applications you are using, as well as their environments, and automatically assigns commands to the Thumb Buttons.

Functionality of the Thumb Buttons in the following applications and environments:

**CAD applications:** Press the Thumb Buttons to zoom in and out of the cursor's position in your drawing or 3D model; fine tune the zoom level by continuing to keep the corresponding button pressed.

**Text or spreadsheet applications:** Use the Thumbs Buttons to quickly jump to the beginning or end of a document.

**Internet browsers:** While browsing you can easily jump forward or backward between web pages with the Thumb Buttons.

**Other applications:** Facilitate your work and use the 3Dconnexion Settings to assign your most frequently used commands to the Thumb Buttons.

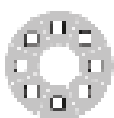
**Note:** The 3Dconnexion driver (3DxWare) is needed to utilize all the functions of the CadMouse Pro Wireless.

## On-Screen Display

The On-Screen Display (OSD) provides a convenient visual reminder of the commands assigned to the Middle Mouse Button and the Thumb Buttons. After installing the driver, the OSD of the CadMouse Pro Wireless is hidden by default. To enable the OSD, open the **3Dconnexion Settings**, select the CadMouse Pro Wireless, click on **Buttons**, and activate the checkbox **Always show On-Screen Display**. You can easily drag and drop the OSD to a different position, where it is more convenient (e.g., on the taskbar near the systray). A click on the OSD opens the button mapping panel.



## Radial Menu Button



Located between the Mouse Wheel and the status LED you will find the Radial Menu Button of your CadMouse Pro Wireless. Clicking it opens an application or environment-specific radial menu, giving you access to your favourite commands with a simple mouse gesture. Learn in the section [Creating Radial Menus](#) how to easily create your own radial menus for any application.



## Mouse Wheel



The Mouse Wheel allows for both precise click-by-click zooming in CAD applications, as well as adjustable smart scrolling speed with inertia for fast but precise skimming of long documents or web pages.

The Mouse Wheel provides two scrolling modes:

**High Speed Mode:** Flick the mouse wheel once to scroll quickly across multiple pages (approximately 3 pages). Simply flick the mouse wheel again immediately afterwards, to increase the scrolling speed.

**Low Speed Mode:** To smoothly scroll through a document and read it at the same time, first flick the mouse wheel once, then rotate it (click by click) before the document stops to continue scrolling.

Move the mouse wheel by one increment in the opposite direction to stop scrolling.

## Connect your CadMouse Pro Wireless



The CadMouse Pro Wireless can be connected via the included 3Dconnexion Universal Receiver, the 3Dconnexion Keyboard Pro, Bluetooth®, or USB cable.

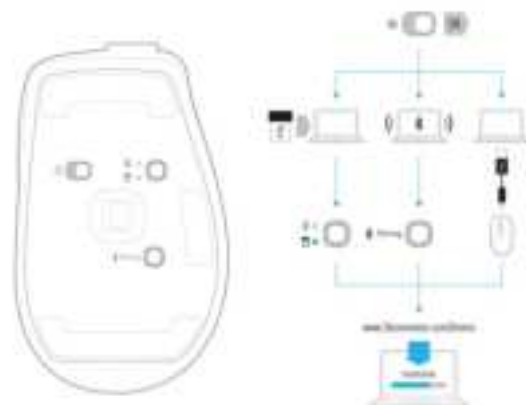
**Note:** Since your CadMouse Pro Wireless is factory paired with the Universal Receiver, you must first disconnect the receiver from your computer before you can pair your CadMouse Pro Wireless via the Keyboard Pro.

### Pairing via Bluetooth®:

Turn on the device with the power switch located on the bottom of the device. Press the mode switch button (also located on the bottom of the device) making sure the blue light next to the Bluetooth icon is active and press the **Pairing** button. Your device should be discovered on your workstation now – select it in order to finish the pairing.

### Pairing via the 3Dconnexion Keyboard Pro:

Open the 3Dconnexion Settings, select the Keyboard Pro, and click on **Paired Devices**. Now press **Add device** and follow the instructions to connect your CadMouse Pro Wireless with your Keyboard Pro.



## Charge your CadMouse Pro Wireless

When the status LED of your CadMouse Pro Wireless turns red, it has less than 10% battery power left and should be charged. Connect your CadMouse Pro Wireless to a charging port of your computer by using the included USB cable. As long as the CadMouse Pro Wireless is charging, the status LED will pulse green, and it will turn solid green when it is fully charged.

# 3Dconnexion Settings

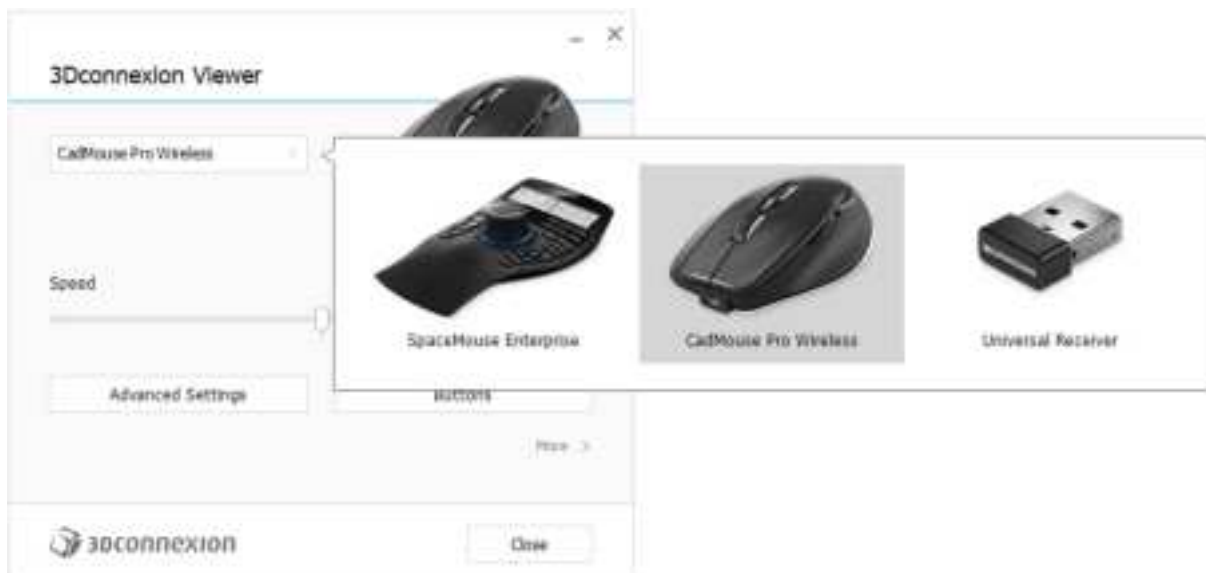


You can access the 3Dconnexion Settings panel either via 3Dconnexion Home (on your desktop), the icon in your notification area (systray), or the Windows start menu.

The name of the active application is displayed at the top of the panel. The current connection mode, as well as the battery level are displayed by the icons below the product image.



If multiple 3Dconnexion devices are connected, you can select the desired product to configure by clicking on the flyout button at the top left of the panel.



## Speed

This slider sets the speed for your CadMouse Pro Wireless cursor on the screen.

**Note:** The CadMouse Pro Wireless speed slider sets speed globally for all applications.

## Advanced Settings

Settings that can be configured in the **Advanced Settings** panel are not application-specific but are the same for all applications system-wide.



### **Mouse Motion**

**Enable Acceleration:** If the mouse moves slow or fast, the cursor will move even slower or faster across the screen.

**Note:** Recommended setting is “disabled”.

### **Polling Rate (wired mode)**

Select the frequency at which the CadMouse Pro Wireless communicates with your PC when connected by cable.

A higher frequency results in more accurate tracking and smoother movement of the cursor.

### **Mouse Wheel Speed**

**Lines:** Select the number of lines scrolled when the mouse wheel is moved 1 increment.

**One page / one screen:** Moving the mouse wheel 1 increment will scroll to the next/previous page.

### **Smart Scrolling**

Adjustable smart scrolling speed with inertia in documents and browsers is ideal for working in many-paged documents, allowing the user to find specific pages quickly and easily.



## Buttons

The **Buttons** panel within 3Dconnexion Settings allows you to assign commands, macros or radial menus to the programmable CadMouse Buttons. The name of the active application is displayed at the top of the panel. Any changes you make to CadMouse Pro Wireless button settings are relevant to this application only.

While you are working in an application, the On-Screen Display always shows you the current assignment of the buttons for this app. To hide the OSD, uncheck **Always show On-Screen Display**.

You have the option to swap the right mouse button and the middle mouse button by checking **Swap Middle / Right Mouse Buttons**.



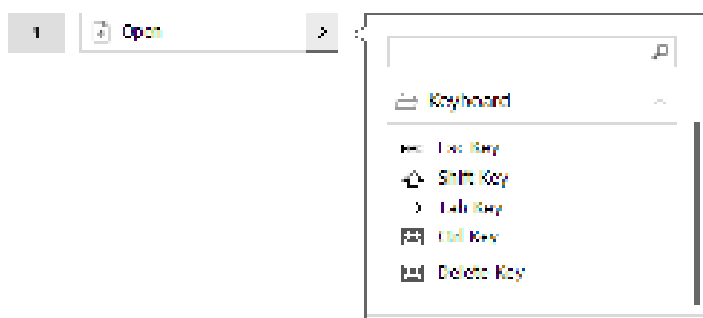
A note about Environment sensitivity: Some applications feature environment sensitive key mapping. In those applications you can have different key assignments depending on the current active environment.

## Assigning Quick Macros to buttons

Click on the text in the key field and press the required key or key combination to quickly assign a keystroke or macro to a CadMouse button.



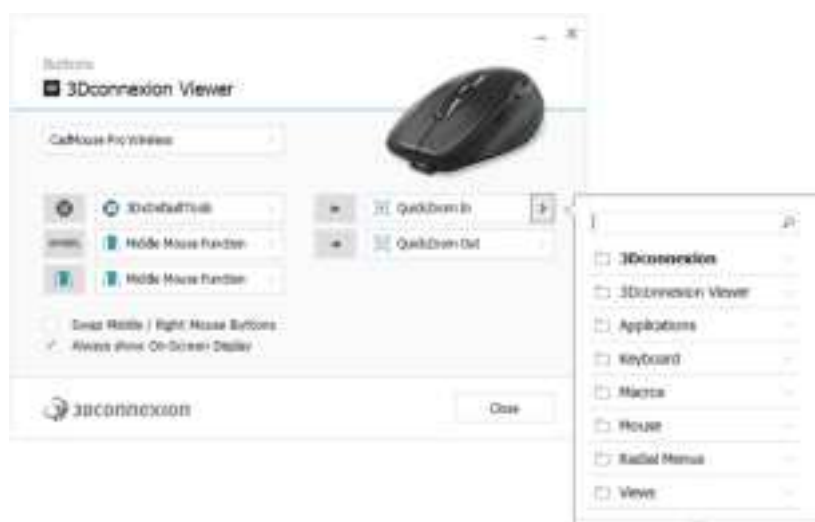
When a macro is created, it always sends a **press and release** command. If you want to assign a **press and hold** command instead (for example Ctrl or Shift), you should use the **Keyboard** command category in the flyout window.



## Assigning Commands using the flyout window

Clicking on the > arrow on the right-hand side of the button field opens a flyout window for that CadMouse button:

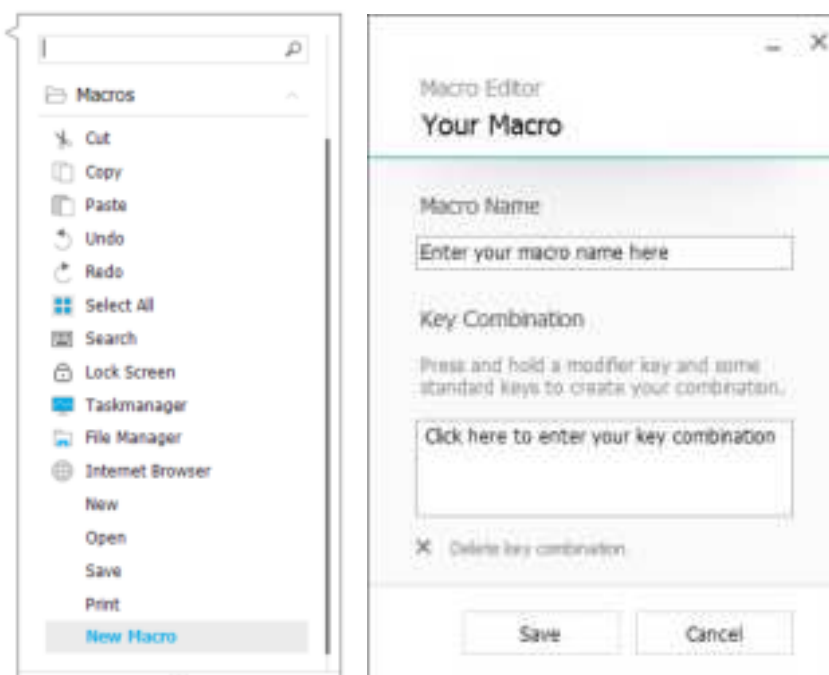
The category of the command that it is currently assigned to is highlighted in bold. The flyout window allows you to browse or search for commands in different categories such as 3Dconnexion or application commands. When you select a command by clicking on it, it is automatically assigned to the CadMouse button.



## Creating Macros

First click on the > arrow on the right-hand side of the key field, then expand the **Macros** category and click on **New Macro**.

This opens the macro editor where you can assign a name for your macro and a sequence of keystrokes in the corresponding fields. Clicking on **Save** will automatically assign the new macro to the button from where you opened the panel.



## Creating Radial Menus

First click on the > arrow on the right-hand side of the button field, then expand the **Radial Menus** category and click on **New Radial Menu**.

This brings up the radial menu editor where you can assign a name and commands to the different sections. Your new radial menu will be automatically assigned to the button from where you opened the panel.



# 3Dconnexion Home



Once you have successfully installed the latest 3Dconnexion driver, 3Dconnexion Home gives you access to various 3Dconnexion apps:



## Trainer:

Learn how to quickly use the 3Dconnexion SpaceMouse.



## Manual:

Here you can find the manuals for all 3Dconnexion products.



## Settings:

Open the settings panel to customize your 3Dconnexion devices.



## Viewer:

Use the 3Dconnexion Viewer to review 3D models.

Supported formats (.stp, .step, .igs, .iges, .obj, .stl, .ply, .jt, .glTF).



## Demo:

Test and practice your skills by assembling the landing gear of an aircraft.



## Registration:

[Register](#) your product after the installation to benefit from 3Dconnexion services.



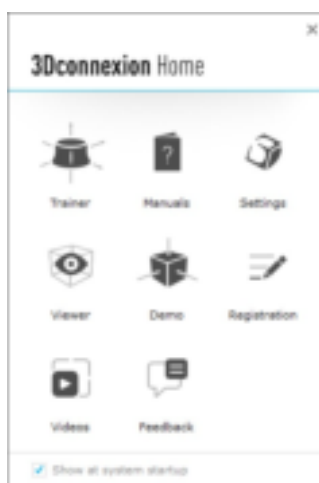
## Videos:

Find instructive [videos](#) for your 3Dconnexion devices.



## Feedback:

Provide [feedback](#) to the 3Dconnexion product team.



# Technical Specifications

## Dimensions & Weight

Length: 126 mm / 5.0"

Width: 74 mm / 2.9"

Height: 44 mm / 1.7"

Weight: 140 g / 0.31 lb / 4.94 oz

## Battery - 3Dconnexion CadMouse Pro Wireless

Rechargeable lithium polymer battery with a capacity of 1.100 mAh

## Supported Operating Systems

Microsoft® Windows, macOS

[More information](#)

## Supported Software

[More information](#)

## Package Contents

- 3Dconnexion CadMouse Pro Wireless
- 3Dconnexion Universal Receiver
- Carry Case
- 3Dconnexion Cable USB-A / USB-C (Braided 1.5m)

## Part Numbers

Packaging unit numbers: 3DX-700078, 3DX-700116

Part number: 3DX-600065

# Safety, Compliance and Warranty Information

## Manufacturer

3Dconnexion GmbH  
Clarita-Bernhard-Straße 18  
81249 Munich  
Germany

## Certifications and Registrations

CE, UKCA, EAC, FCC, IC, MIC, KC, RCM, BSMI, NCC, WEEE, RoHS-EU, RoHS-CN

[More information](#)

## Warranty

3-years limited hardware warranty

[More information](#)

## Radio Frequency Information

Frequency band(s): 2404 - 2477 MHz

Maximum radio-frequency power: 0DBM

## Battery Warning

[More information](#)

## Support

[3dconnexion.com/support](https://3dconnexion.com/support)