



27930

Please read the following instructions carefully.

Keep this instruction manual for future reference.

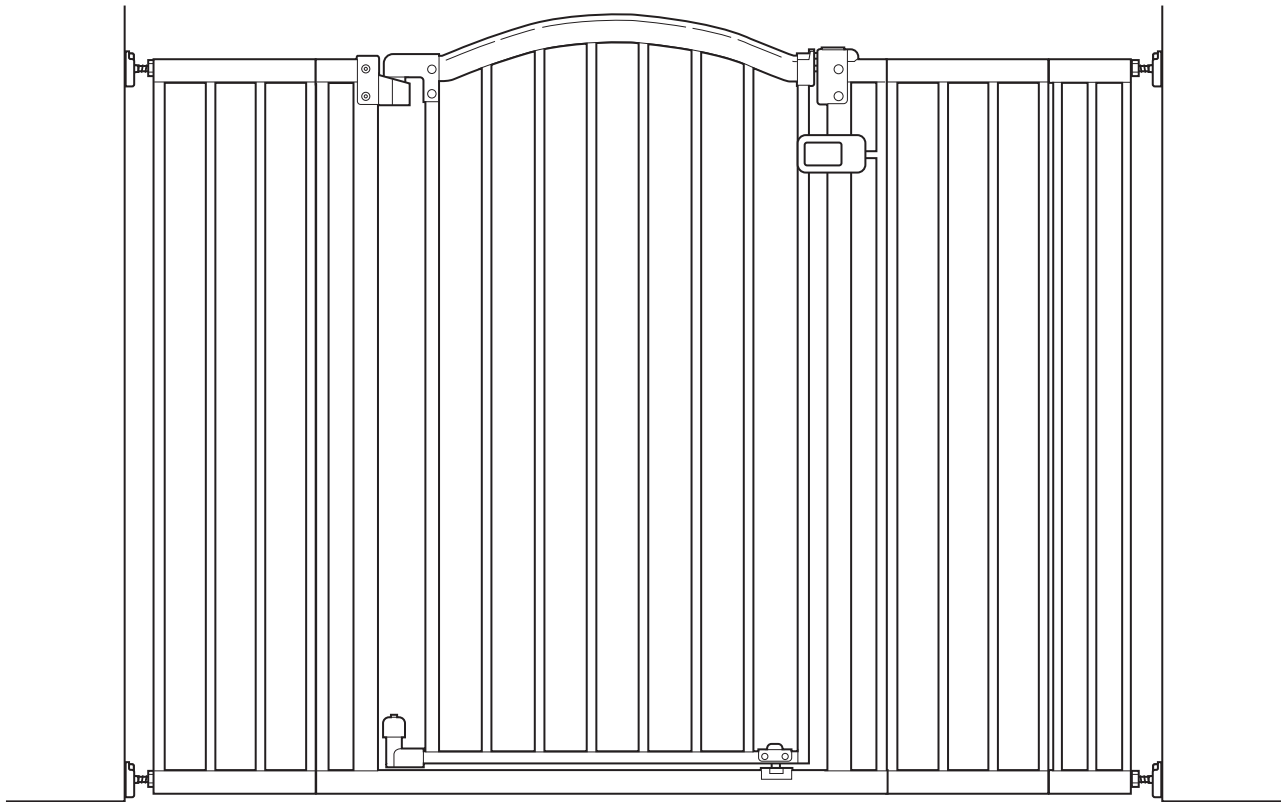
Tools required: Phillips head screwdriver, drill (for top of stair installation), and pencil (not included), wrench (included).

For use with children from 6 - 24 months.

Keep small parts away from children.

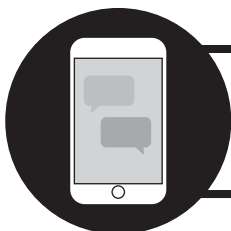
Adult assembly required.

Fits openings from 29.5" - 53" wide.



Main Street Safety Gate

INSTRUCTION MANUAL



Text "Install Main" to 38344 for a step-by-step installation video.

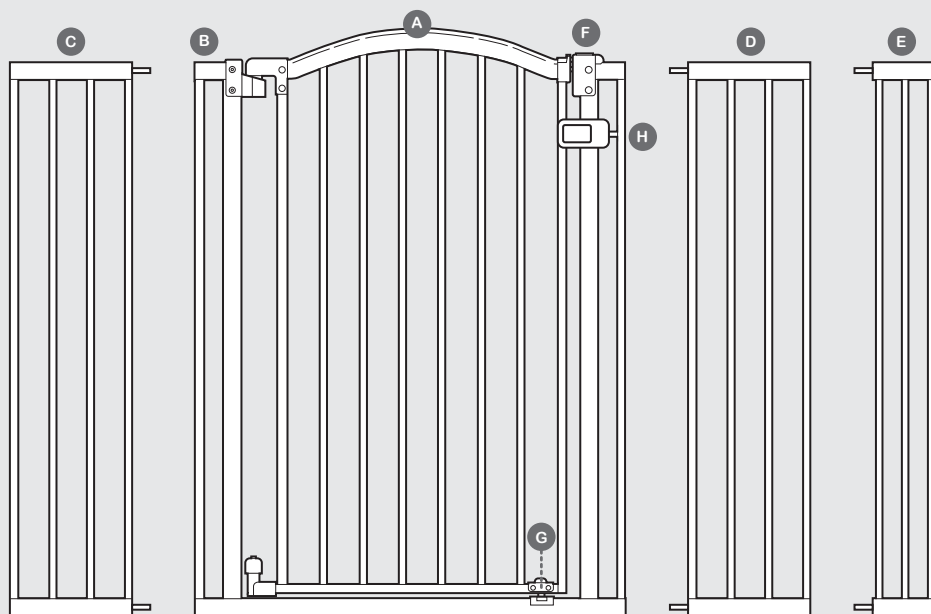
Have questions? We're here to help. For technical support please contact us at 401-671-6551 or www.summerinfant.com/contact.

⚠ WARNING

- Children have died or been seriously injured when gates are not securely installed. **ALWAYS** install and use gate as directed using all required parts.
- **STOP** using when a child can climb over or dislodge the gate.
- Use only with the locking/latching mechanism securely engaged.
- To prevent falls, never use at top of stairs without wall mounting cups and door stopper.
- **NEVER** use to keep child away from pool.
- **NEVER** leave child unattended.
- Always close and lock the gate behind you.
- This product will not necessarily prevent all accidents.
- Do not use if any components are missing or damaged.
- Adult assembly required. Exercise care when unpacking and assembling product.

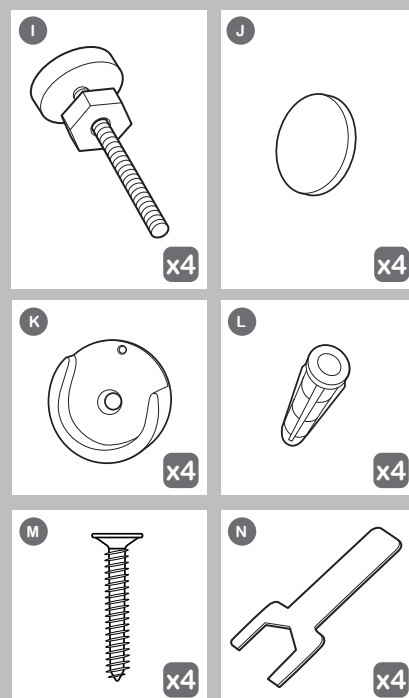
⚠ CAUTION: KEEP SMALL PARTS OUT OF CHILD'S REACH.
IMPORTANT – Read the instructions carefully before use and keep them for future reference.

components:



- | | |
|----------------------------------|--|
| A Gate Door | H Door Stop |
| B Gate Frame | I Tension Bolts with Tension Nuts (4) |
| C Large Extension Frame 1 | J Adhesive Mounting Pads (4) |
| D Large Extension Frame 2 | K Wall Cups (4) |
| E Small Extension Frame | L Wall Anchors (4) |
| F Top Latch | M Screws (4) |
| G Lower Latch | N Wrench |

hardware:



gate configurations (choose which best fits your scenario):



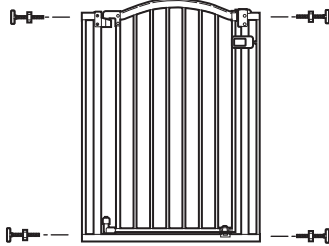
Measure the width of the opening where you intend to install the gate. Refer to the following illustrations to determine the correct installation configuration. Baseboard molding may change which configuration is appropriate.



WARNING

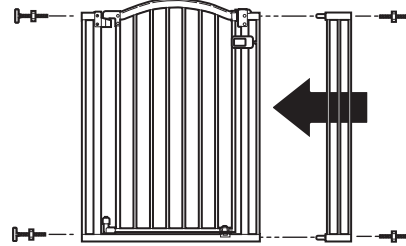
NEVER install three extension frames on the same side of the gate.

A



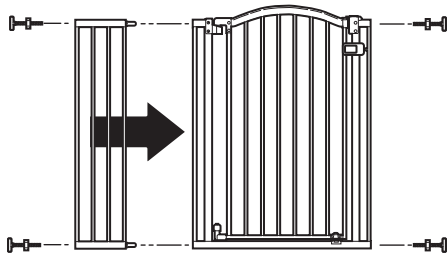
(29.5" - 33") without extension frames

B



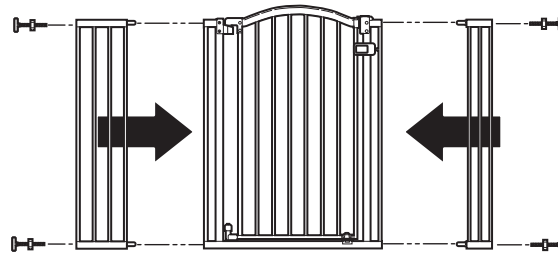
(33.5" - 37") with small extension frame

C



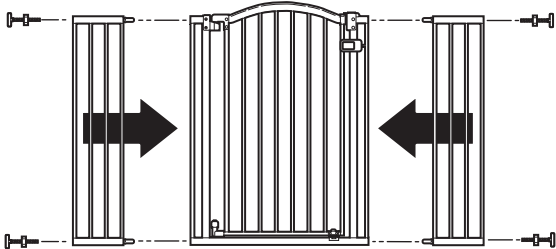
(37.5" - 41") with large extension frame

D



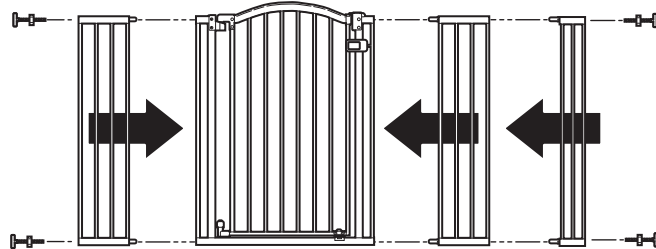
(41.5" - 45") with large and small extension frame

E



(45.5" - 49") with 2 large extension frames

F



(49.5" - 53") with the 2 large and 1 small extension frames



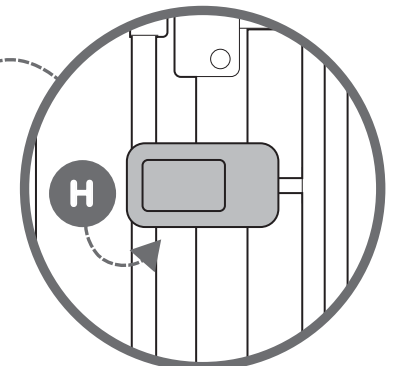
Note: This instruction book illustrates installation of gate configuration F.

If choosing gate configuration A, skip ahead to step 2. Otherwise, follow step 1 using the appropriate extension frames that best fit your scenario.

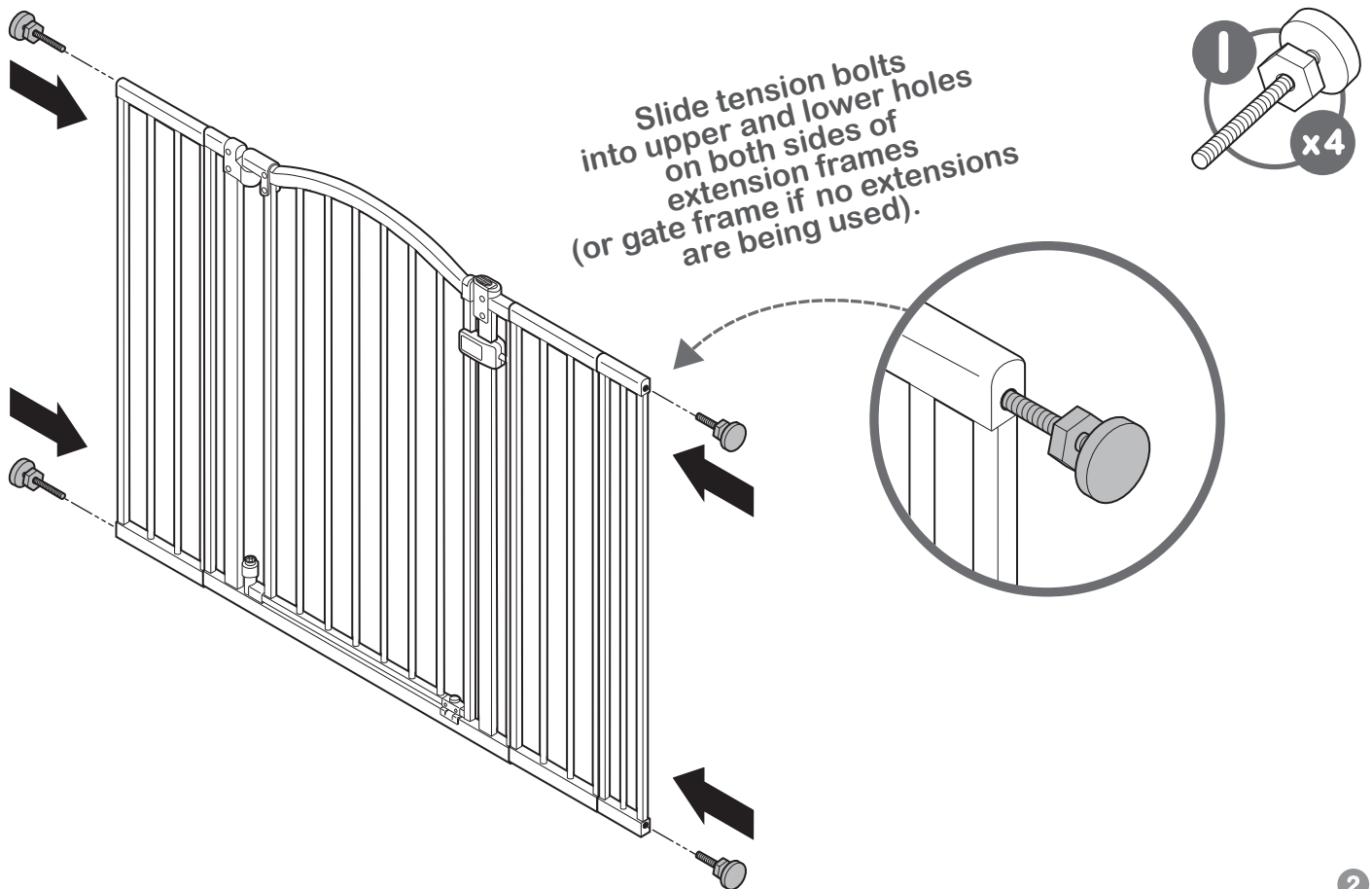
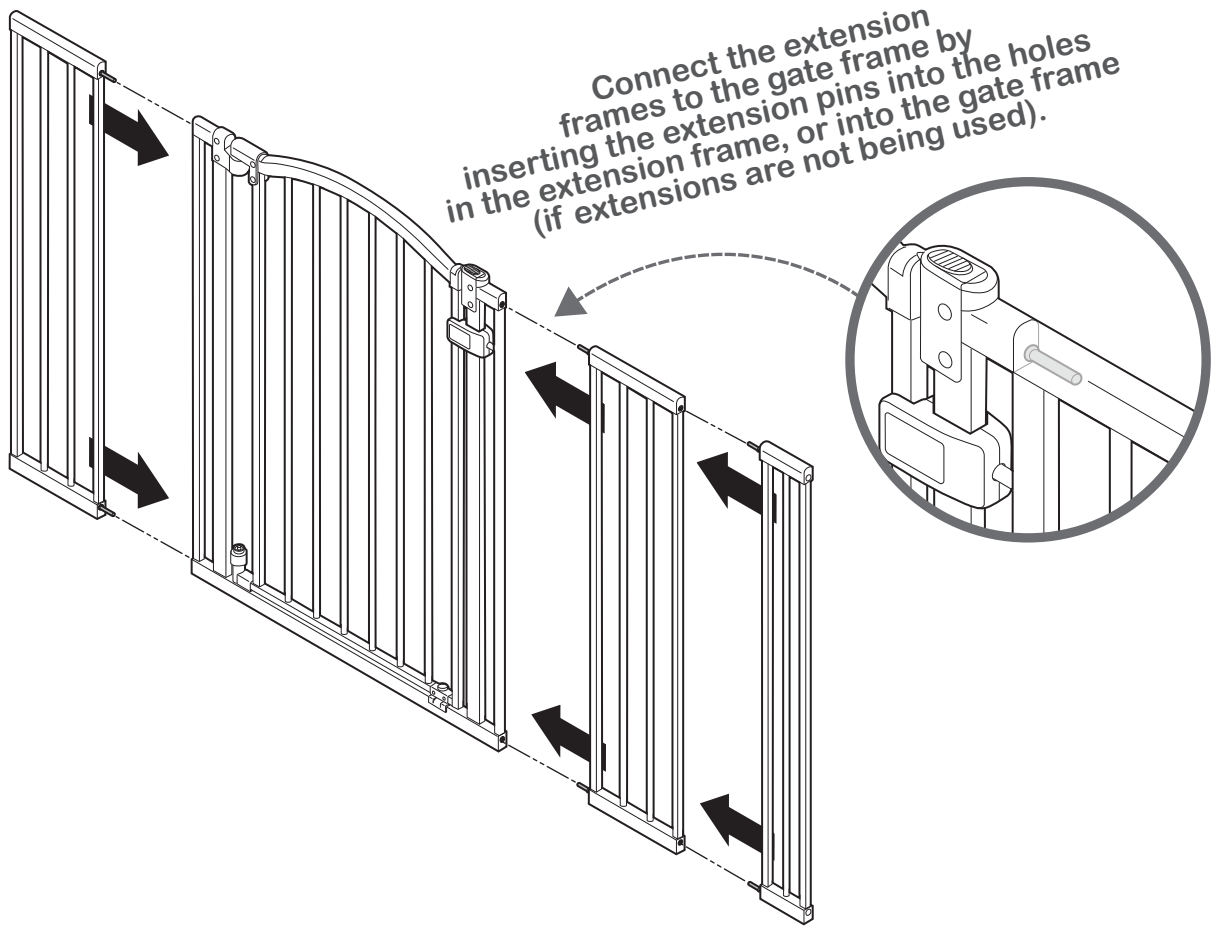


Important: Gate includes a door stop (part H) which prevents the gate from swinging open in one direction. When installing the gate at the top of stairs, be sure that the door stop is on the stairway side of the gate so the door cannot open over the stairs. While the door stop comes assembled on the gate, it can be removed and installed on either side of the gate frame.

When gate is not used at top of stairs, door stop may be removed to allow gate door to open in either direction.



installation:



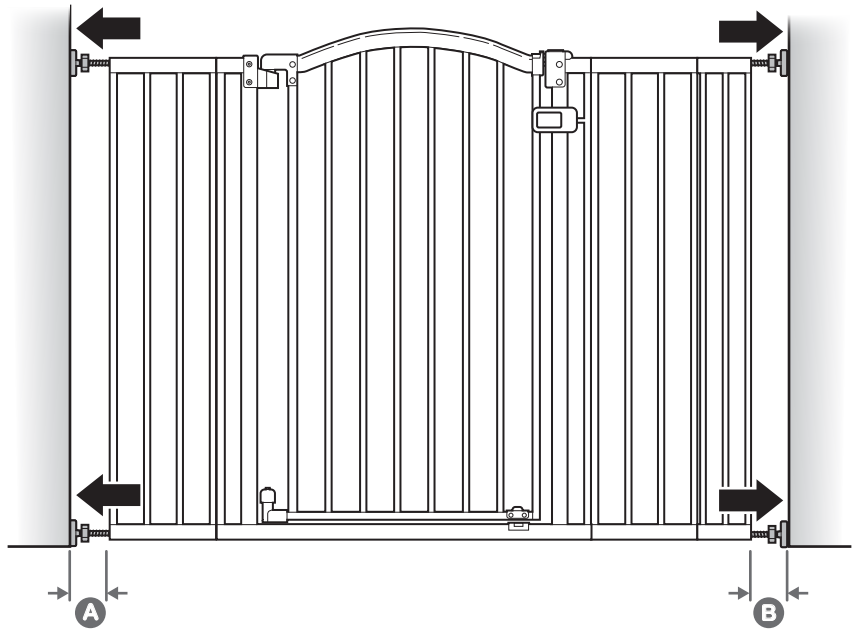
installation (continued):

Stand the gate in the center of the opening. Make sure the bottom of the gate is completely flush to the floor. Slide tension bolts out until they contact the door frame or wall on both sides.

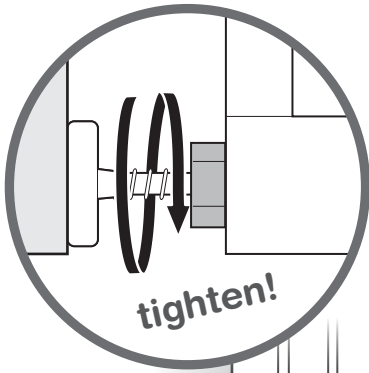


IMPORTANT

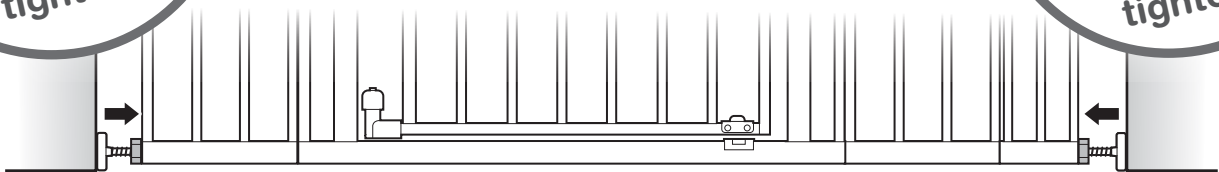
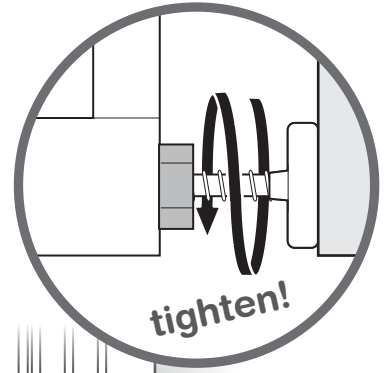
Check locations A and B. The distance between the gate and the wall should never exceed 2.75".



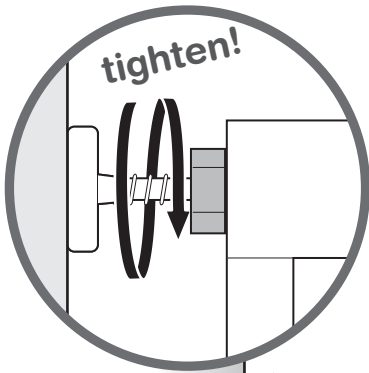
3



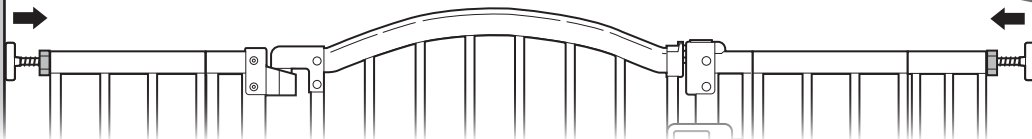
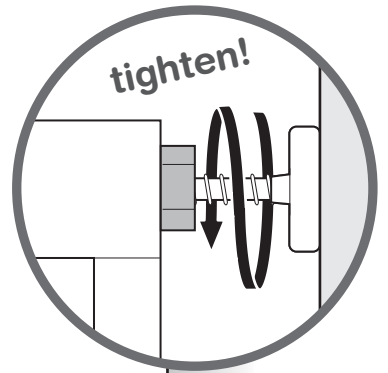
Use the tension nuts to tighten both of the bottom tension bolts.



4



Use the tension nuts to tighten both of the top tension bolts.



Note: If mounting at top of stairs, proceed to step 6. Otherwise, follow the directions in step 14 to tighten the tension nuts.

5

5

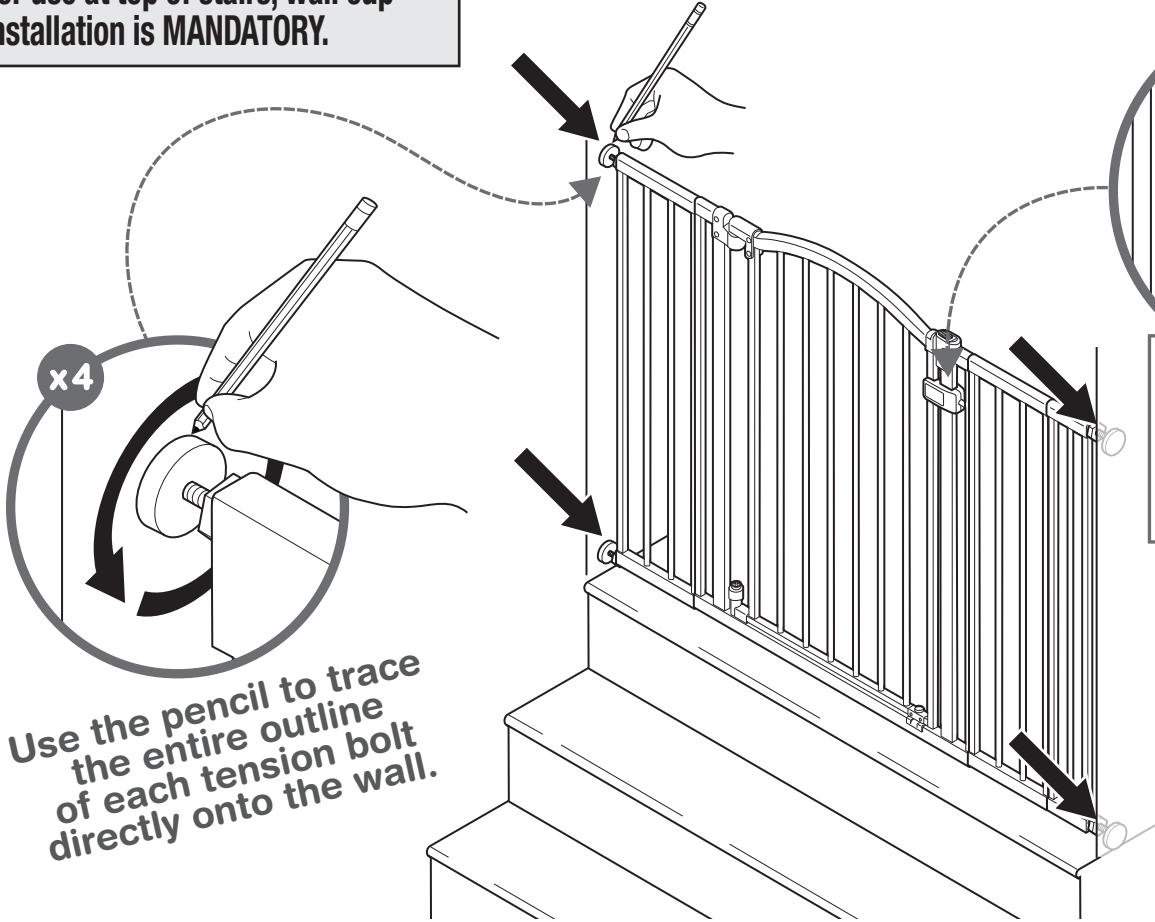
STOP! wall cup/top of stairs installation:



WARNING

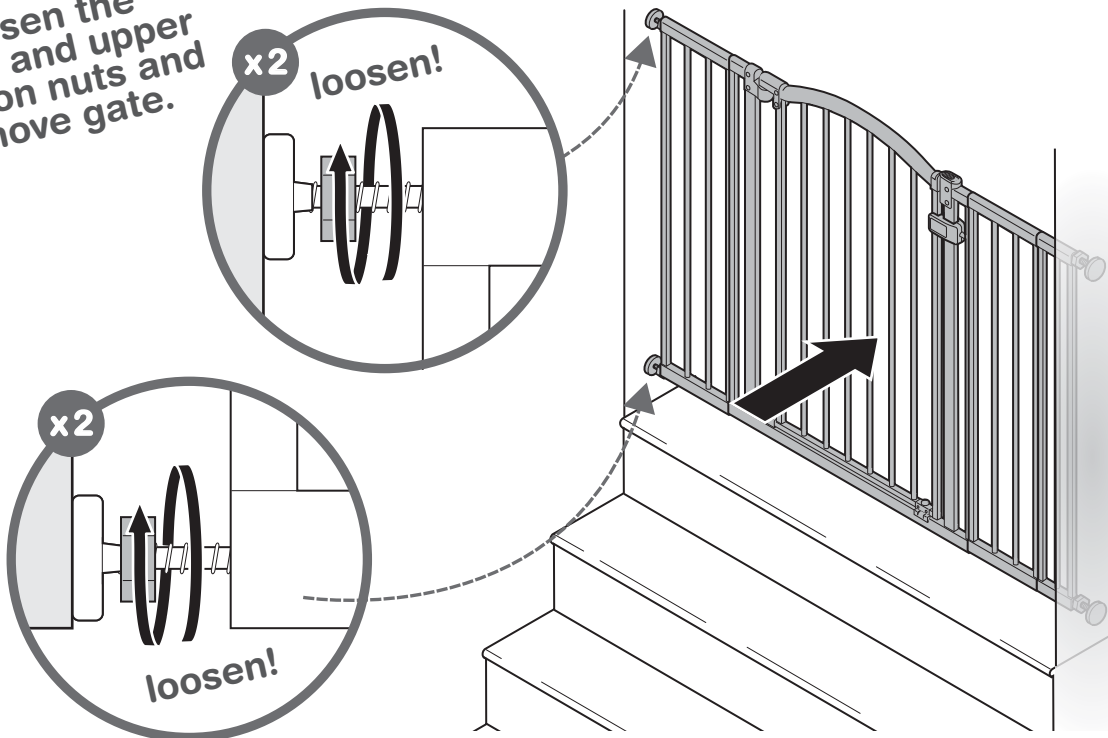
For use at top of stairs, wall cup installation is **MANDATORY**.

Follow these wall cup installation instructions when using gate at **TOP OF STAIRS (MANDATORY)**, or if using wall cups for a standard opening (optional). If opting not to use wall cups for a standard opening, skip ahead to step 14.



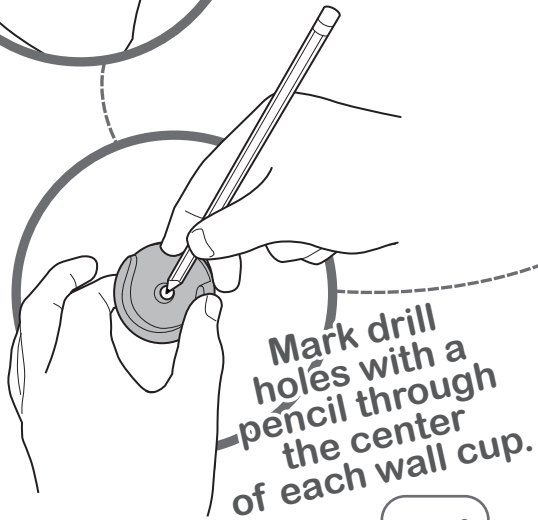
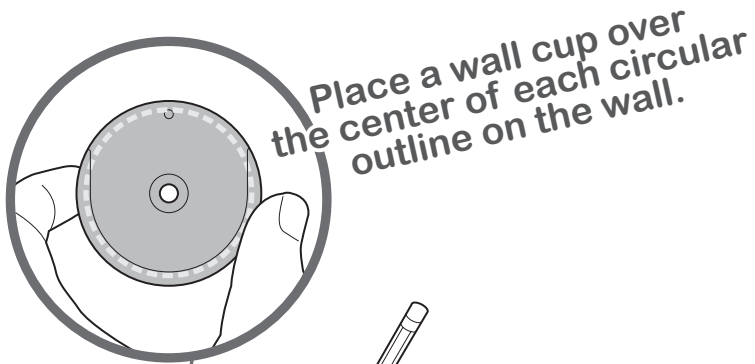
6

Loosen the lower and upper tension nuts and remove gate.

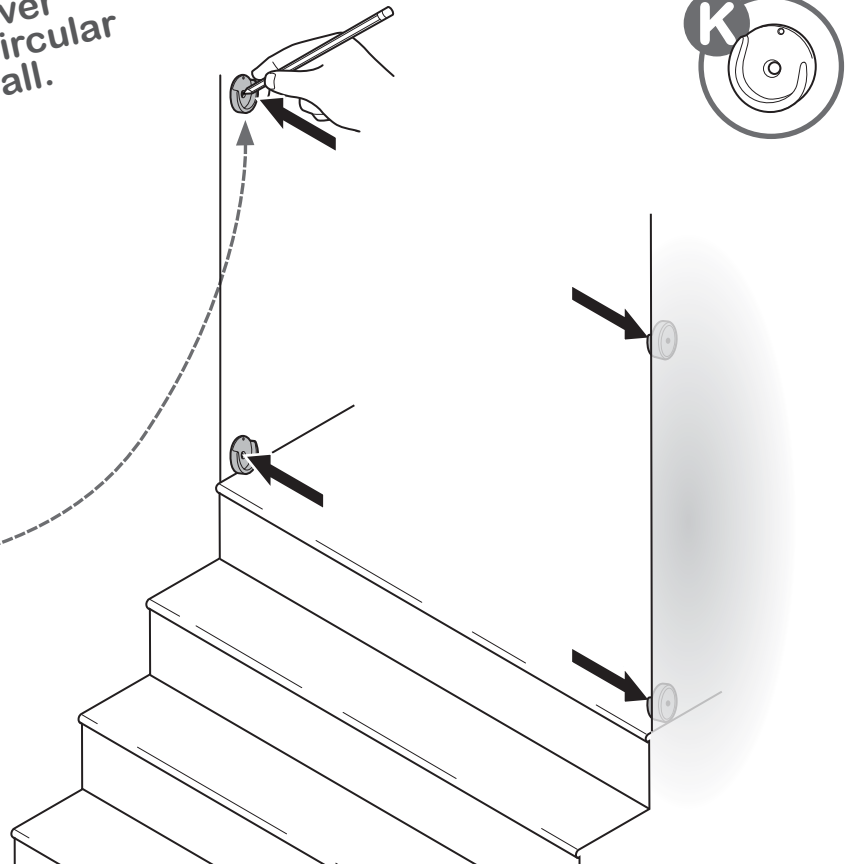


7

wall cup/top of stairs installation (continued):



x4



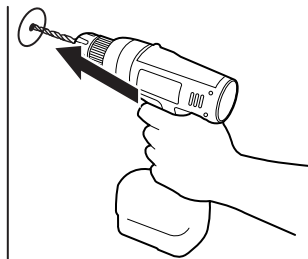
8



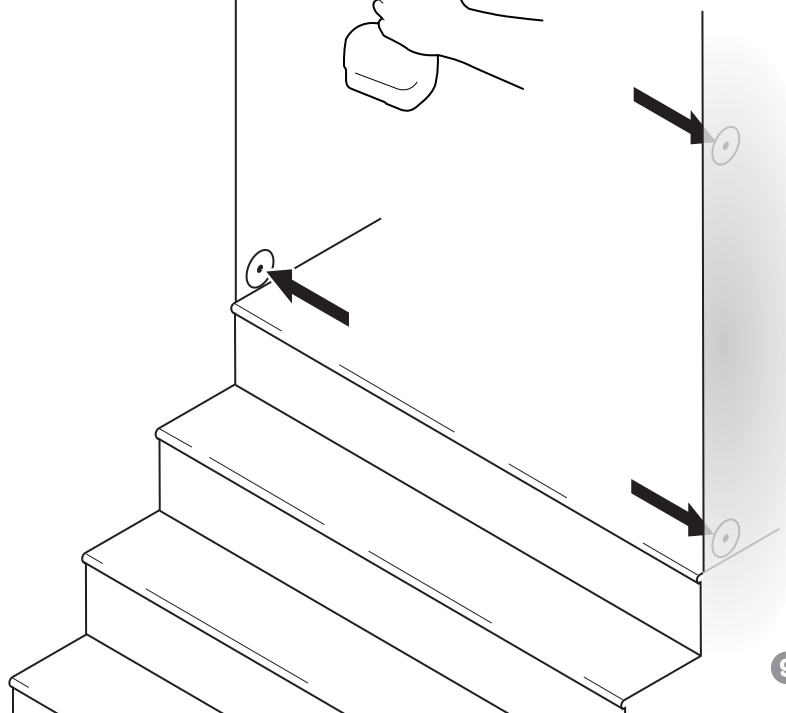
1st
Drill a 7/32" pilot hole into each of the 4 center marks.

2nd
Insert wall anchors into pilot holes.

Note: If mounting into plaster or drywall, follow this step and use the wall anchors provided.



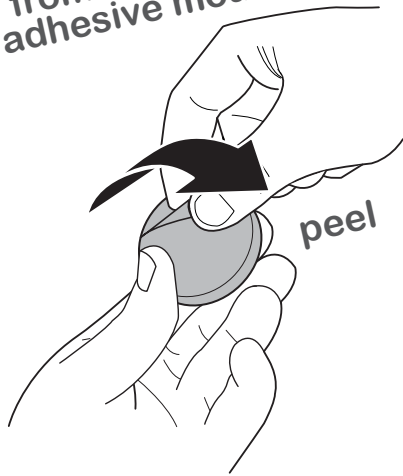
x4



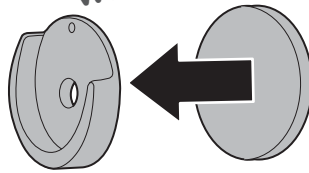
9

wall cup/top of stairs installation (continued):

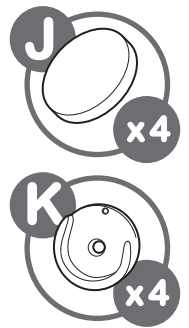
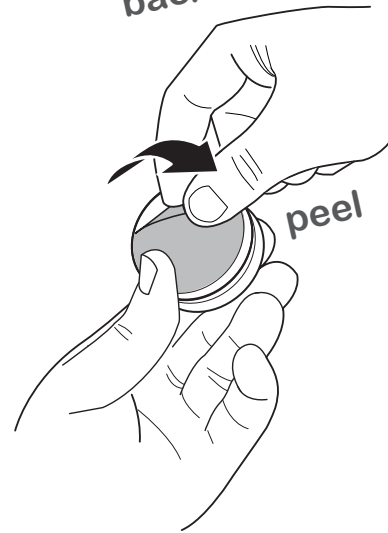
1st
Remove backing
from one side of each
adhesive mounting pad.



2nd
Attach one pad to
the back of each
wall cup.

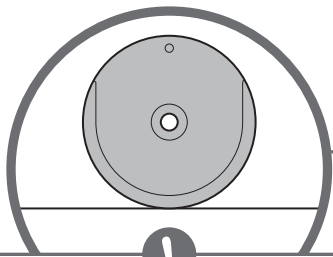


3rd
Remove
backing.

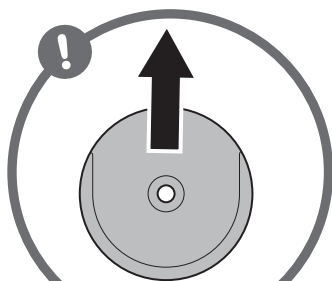


10

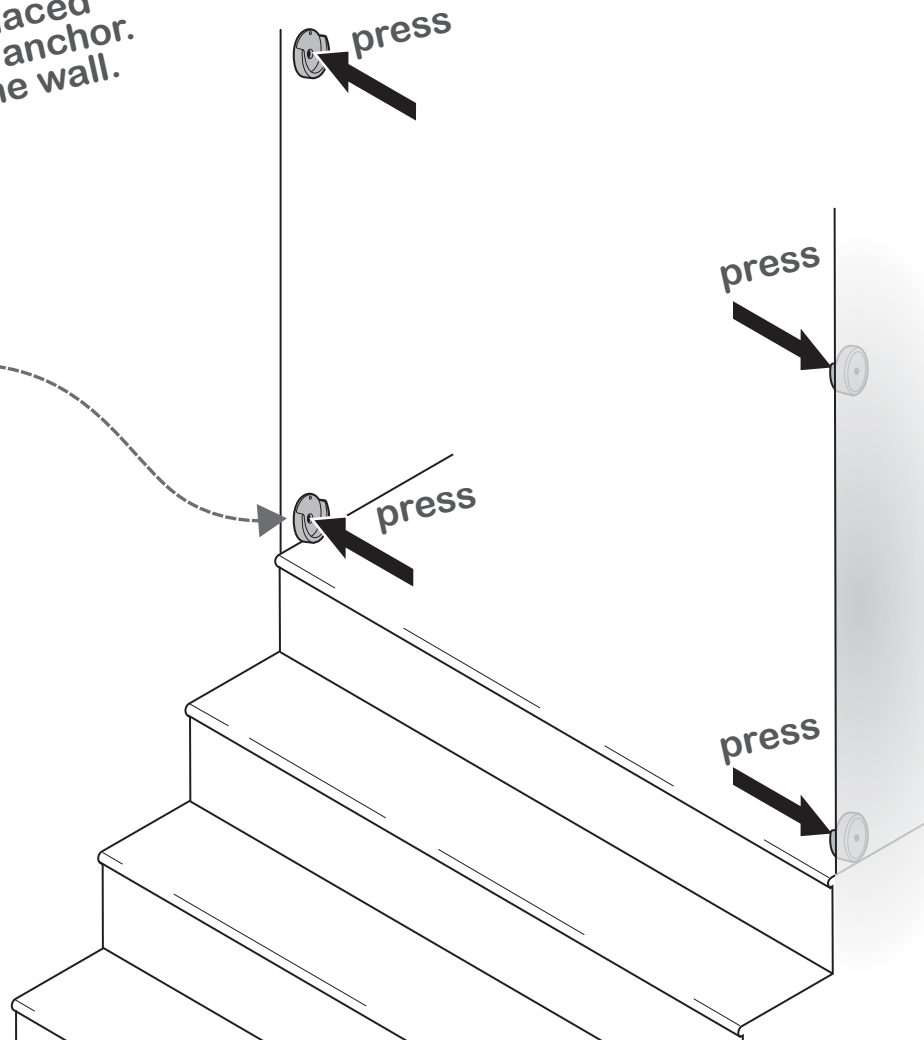
Align the wall cups so
the center hole is placed
directly over the wall anchor.
Stick wall cups to the wall.



Note: The bottom wall cups
should rest on the floor.



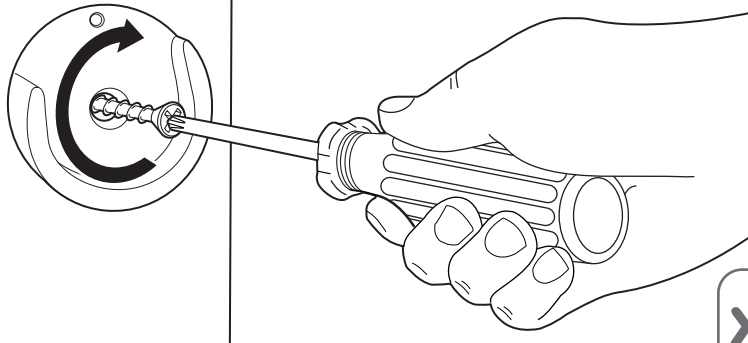
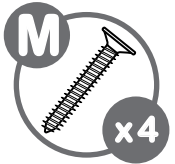
Make sure
all wall cups
are facing up.



wall cup/top of stairs installation (continued):

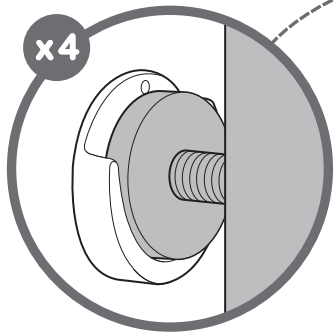


Screw
wall cups
into wall.



x4

12

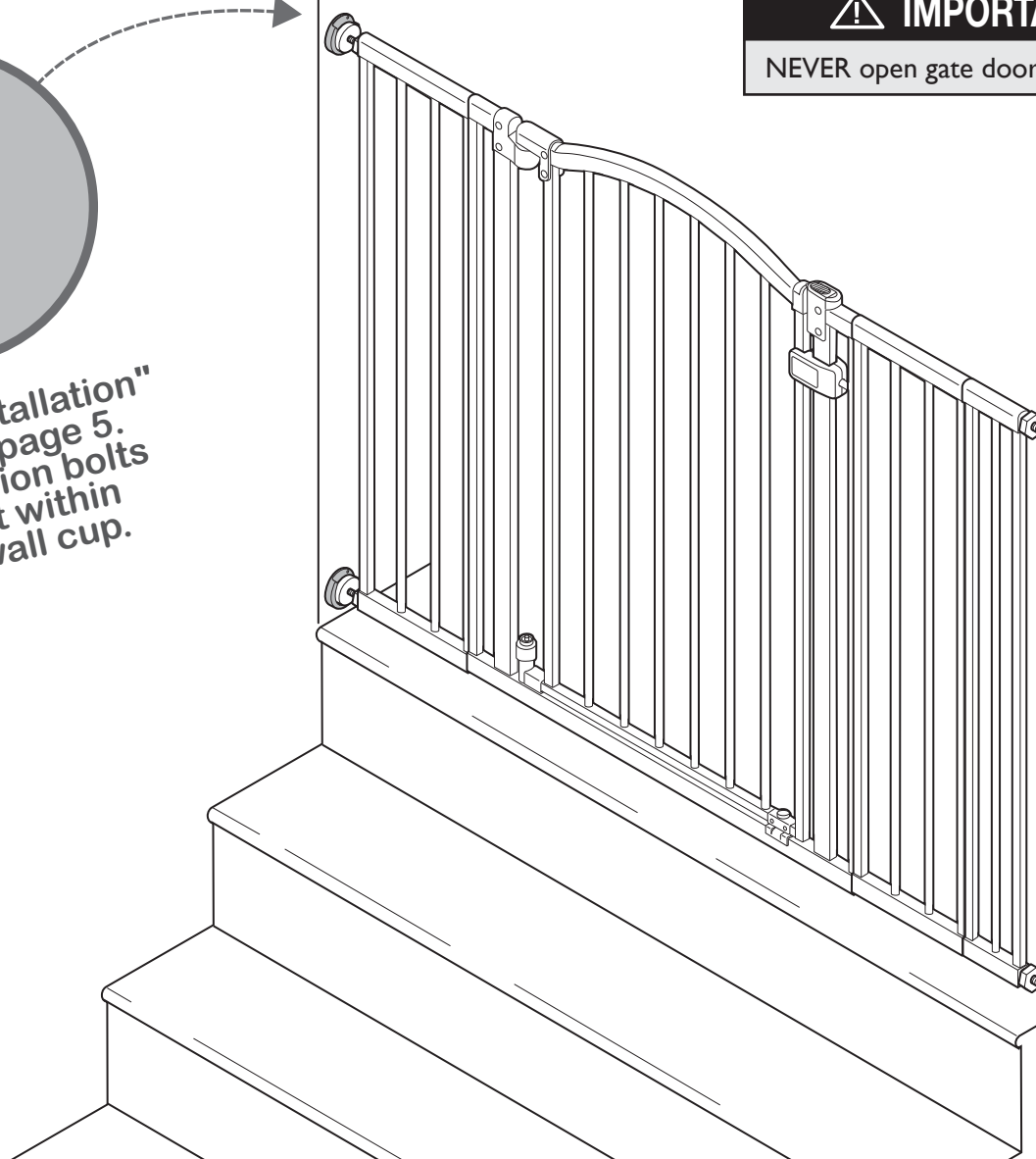


Repeat "installation"
steps on page 5.
The 4 tension bolts
will rest within
each wall cup.



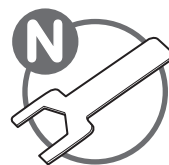
IMPORTANT

NEVER open gate door over stairs.



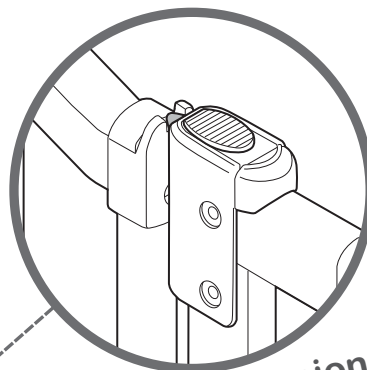
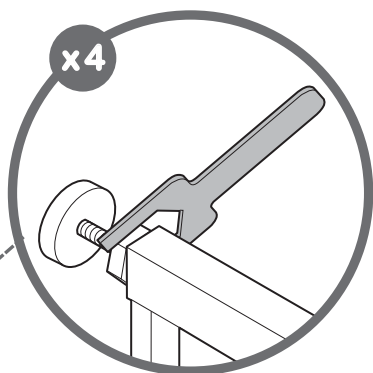
13

wall cup/top of stairs installation (continued):

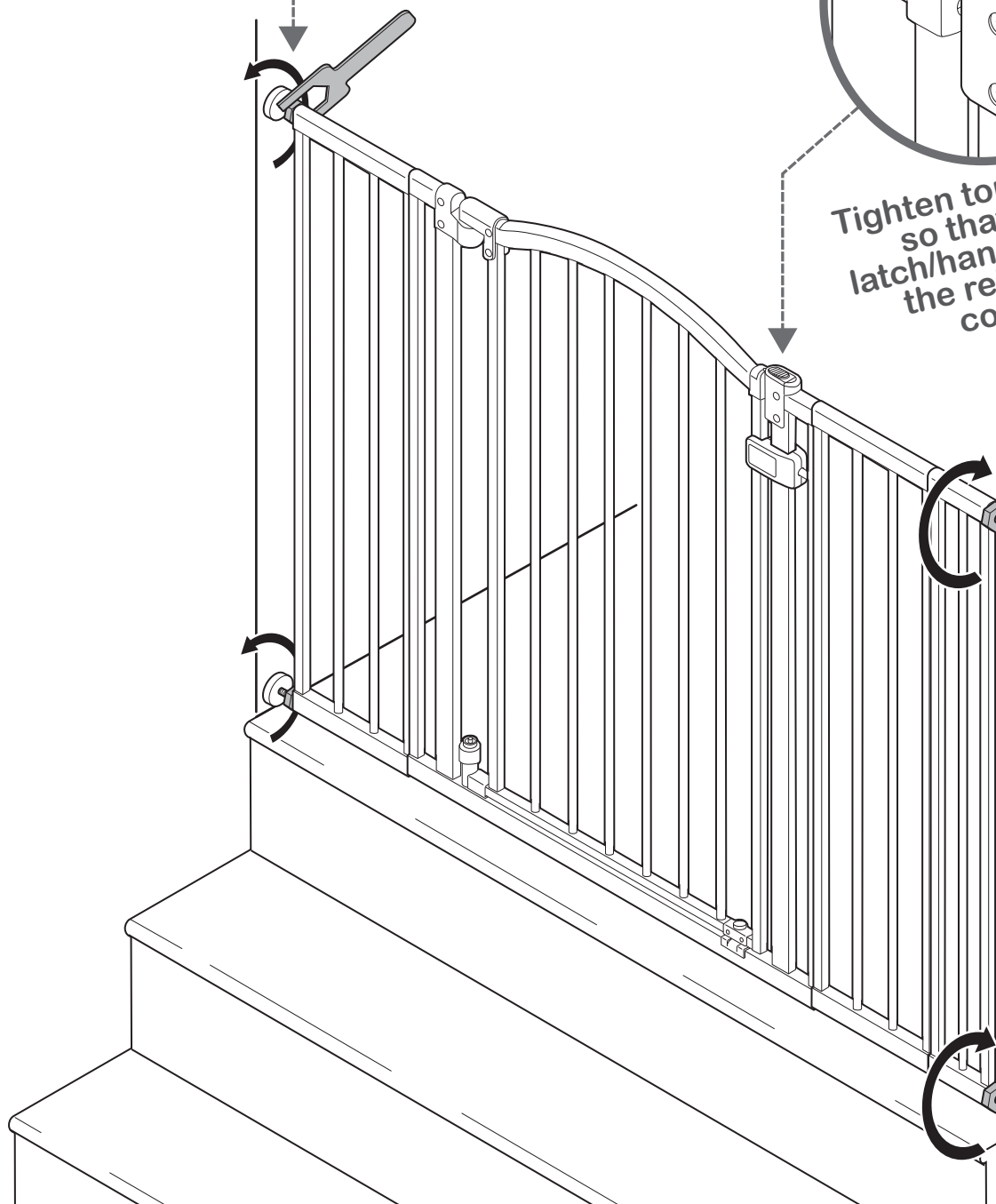


Tighten all 4 tension nuts with the provided wrench.

x4

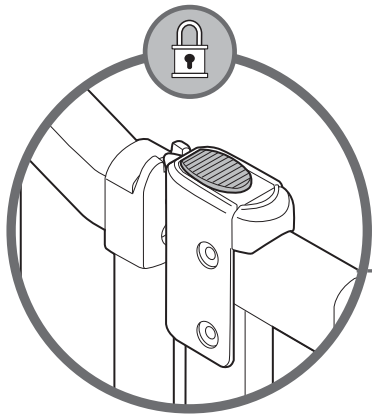


Tighten top tension nuts so that the upper latch/handle goes below the release button completely.

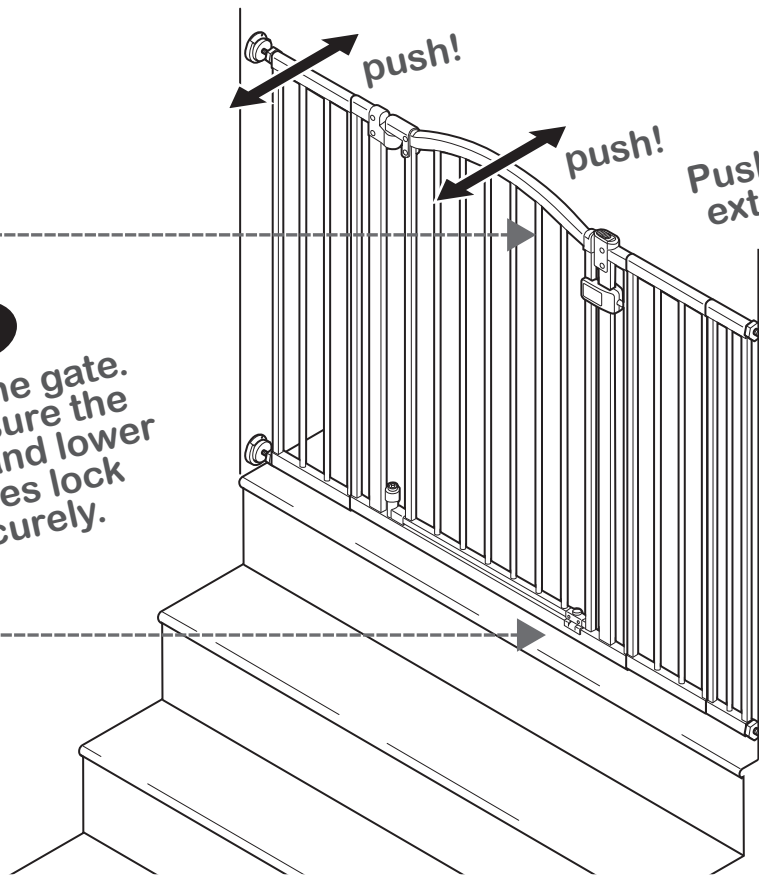
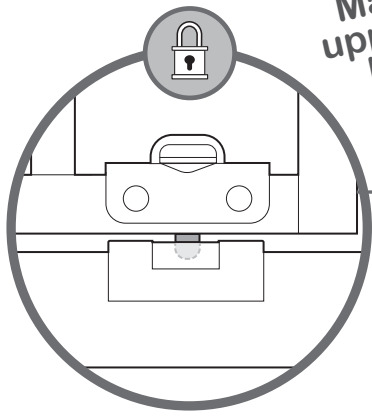


FINISHED! 14

testing the installation:



1st
Close the gate.
Make sure the
upper and lower
latches lock
securely.



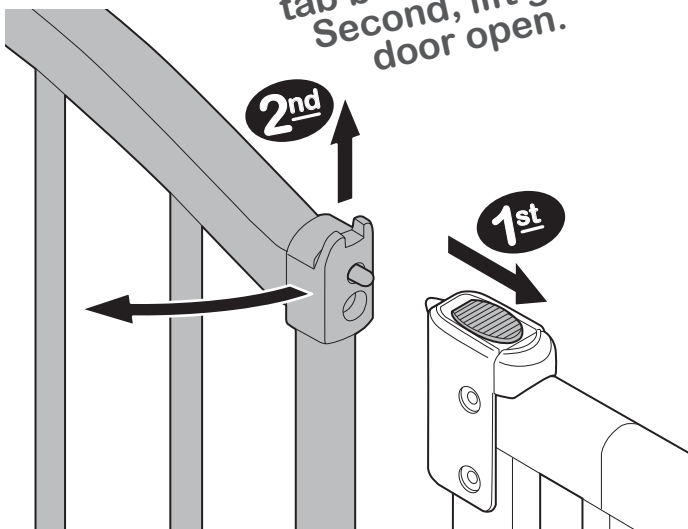
2nd
Push the gate and
extension frames
to check
stability.

operation:



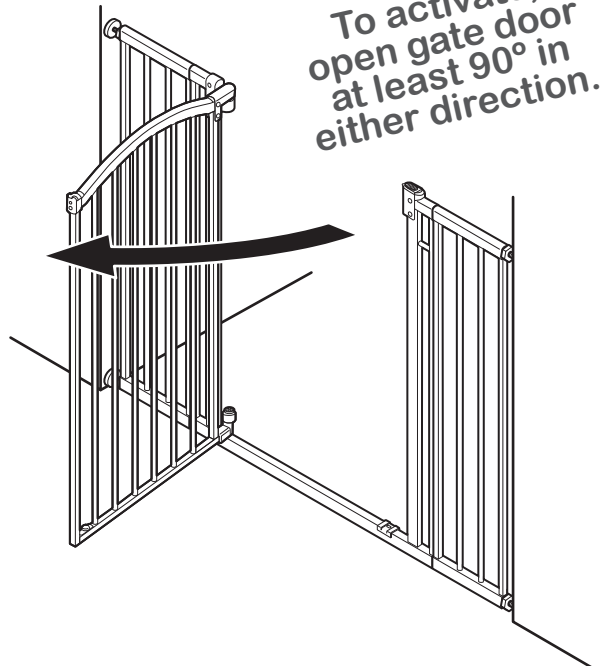
to unlock gate:

First, slide locking
tab back to release.
Second, lift gate
door open.



hold open feature:

To activate,
open gate door
at least 90° in
either direction.



troubleshooting:

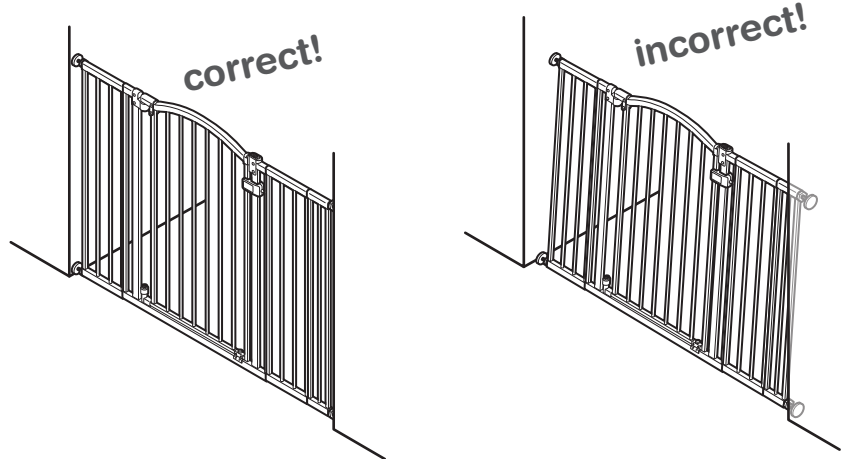
If the gate does not close properly:

1. Gate is not properly aligned in the door frame.

Solution: To adjust the gate's alignment, loosen all four tension bolts and reposition gate so that it matches the "correct" image. Re-tighten tension bolts.

2. Pressure of tension bolts needs to be adjusted.

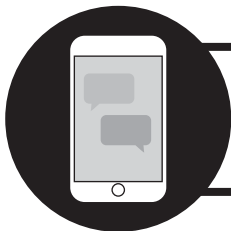
Solution: Loosen or tighten the upper tension bolts. Ensure the upper latch engages securely when the gate swings closed, and that it can be released properly when the sliding lock tab is pushed back.



maintenance:

- Regularly check tension bolts to make sure the gate is securely in place.
- Do not use the gate if any components are damaged or missing.
- Surface clean with a damp cloth or sponge using mild detergent and warm water.

replacement hardware kit #27930-50



Text "Install Main" to 38344 for a step-by-step installation video.

For technical support or to order a replacement hardware kit, please contact us at 401-671-6551 or www.summerinfant.com/contact.