

# SETTING UP THE SYSTEM

1. Download and install the eufy app, then sign up for an account.



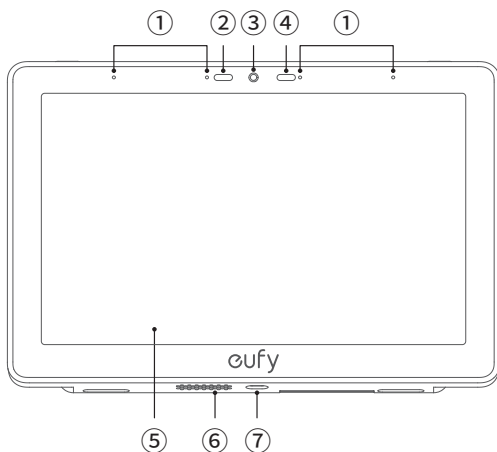
2. Press and hold the power button for 3 seconds to power on the Smart Display.

3. Connect the Smart Display to a Wi-Fi network.

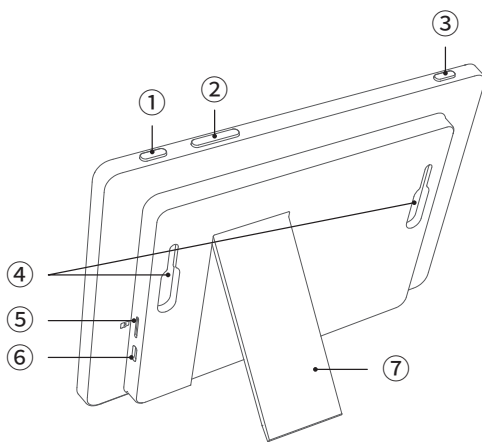
4. Sign in with your eufy account.

5. Follow the on-screen instructions to complete the setup.

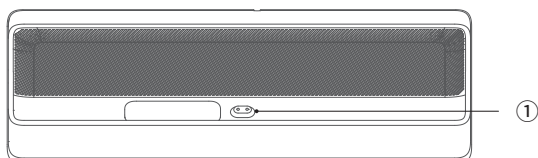
## OVERVIEW



- ① Microphones
- ② Proximity Sensor
- ③ Low Battery Indicator Light
- ④ Light Sensor
- ⑤ Touchscreen
- ⑥ Speaker
- ⑦ Charging Pins

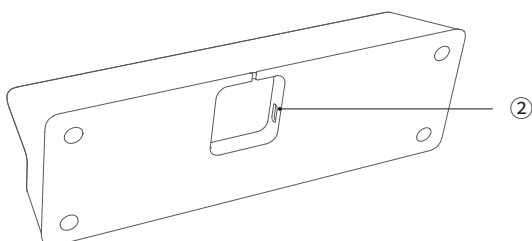


- ① Power Button
- ② Volume Up / Down Button
- ③ Alarm Button
- ④ Mount Slots
- ⑤ MicroSD Card Slot
- ⑥ Charging Port
- ⑦ Folding Bracket



### Charging Dock

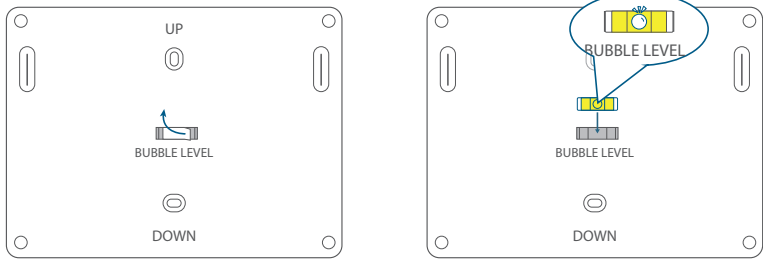
- ① Charging Pins
- ② Power Port



# WALL MOUNT

## Adjust the Wall Mount Position with the Bubble Level

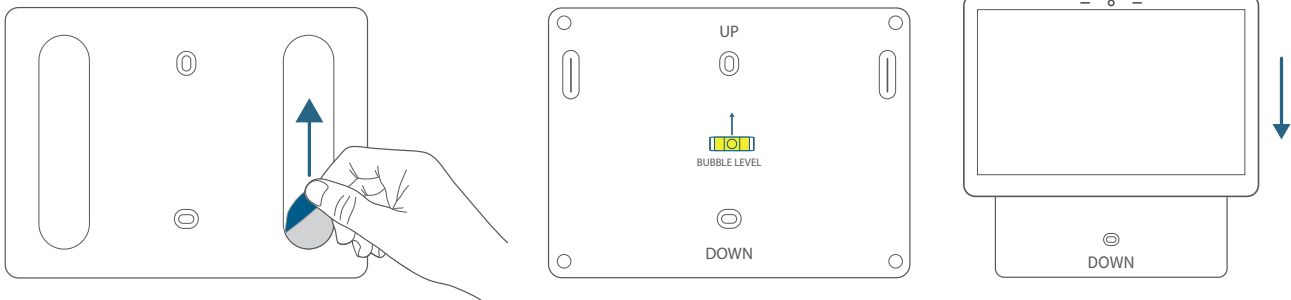
Adjust the position of the wall mount with the bubble level before you stick it to the wall or drill holes on the wall.



①

②

## Option 1: 3M Stickers

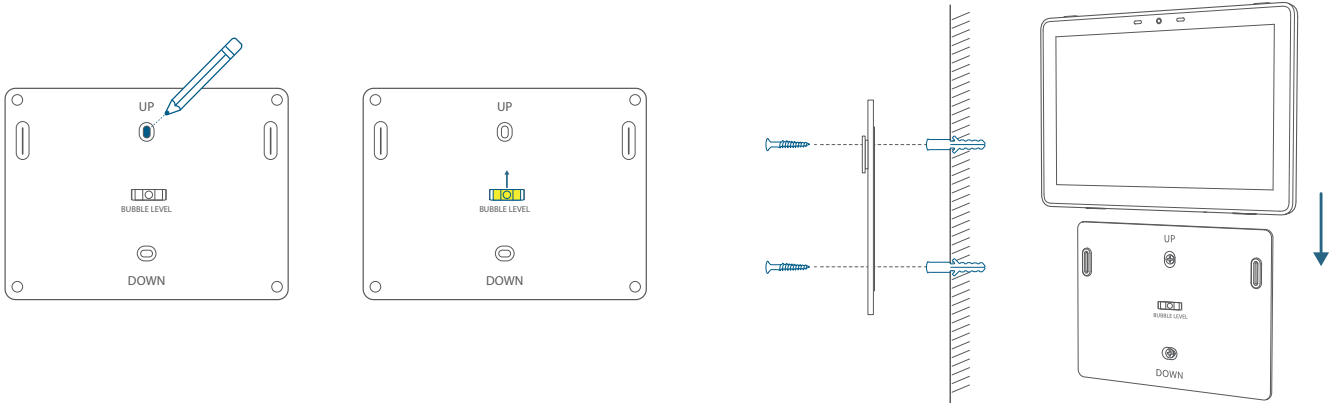


①

②

③

## Option 2: Anchors and Screws



①

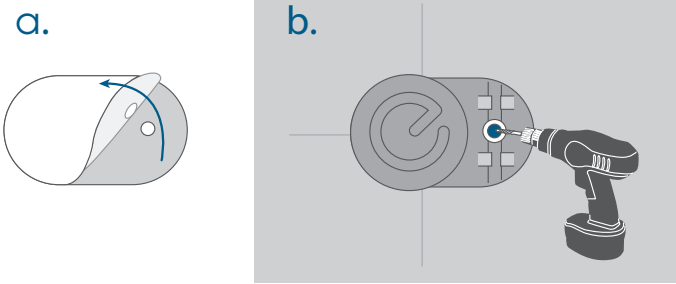
②

③

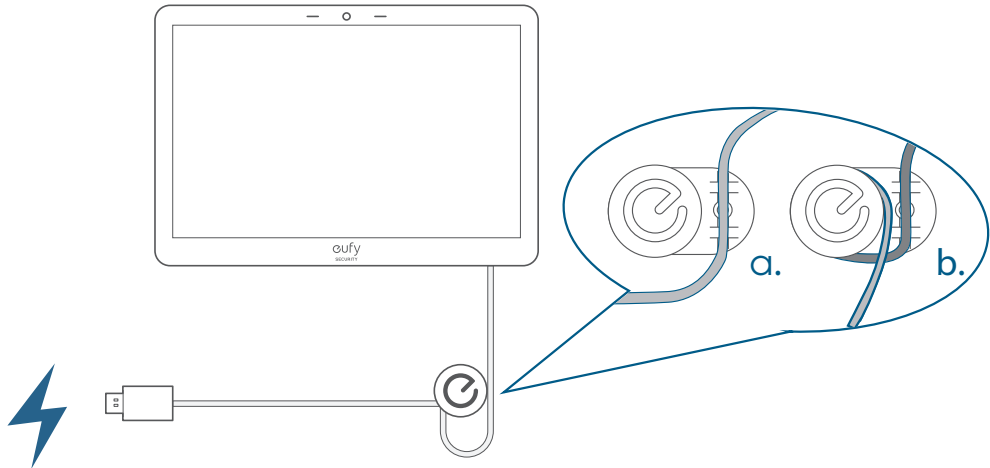
Fix the Cable Holder

Use the cable holder if necessary. Fix the cable holder with the 3M sticker or an expansion screw.

1



2



# SPECIFICATIONS

Items	Parameters	eufy Smart Display E10
Mechanical	Dimensions	5.47"H x 7.91"W x 0.65"D (139mm x 201mm x 16.5mm)
LCD Display	Size	8 inch LCD
	Resolution	1280(RGB) x 800 pixels
	Brightness	250 cd/m <sup>2</sup>
	RGB Color	24bit, 16.7 Million Colors
Touchscreen	Type	Capacitive glass multi-touch
Network	WiFi	Support 2.4GHz/5GHz Wi-Fi6
Flash Memory	Internal Storage	8GB EMMC Flash
	External storage	Supports up to 512GB microSD card
LED Indicator	Low Battery Indicator	Red Ring LED
Speaker/Siren	2.5W x 1	65-decibel siren at a distance of 3 meters (10 feet)
Microphone	MEMS x 4	4 MEMS (Micro-Electro-Mechanical System)
Battery	Model T87A0	Rechargeable Lithium Ion available 4900mAh Rated for over 24 hours
	Pass-Through Charging	Supports long-term charging without damaging battery life
Power Supply	DC	5V DC 2000mA CC, Input 100-240VAC 50/60Hz Adpater