

# Digital Column Scale

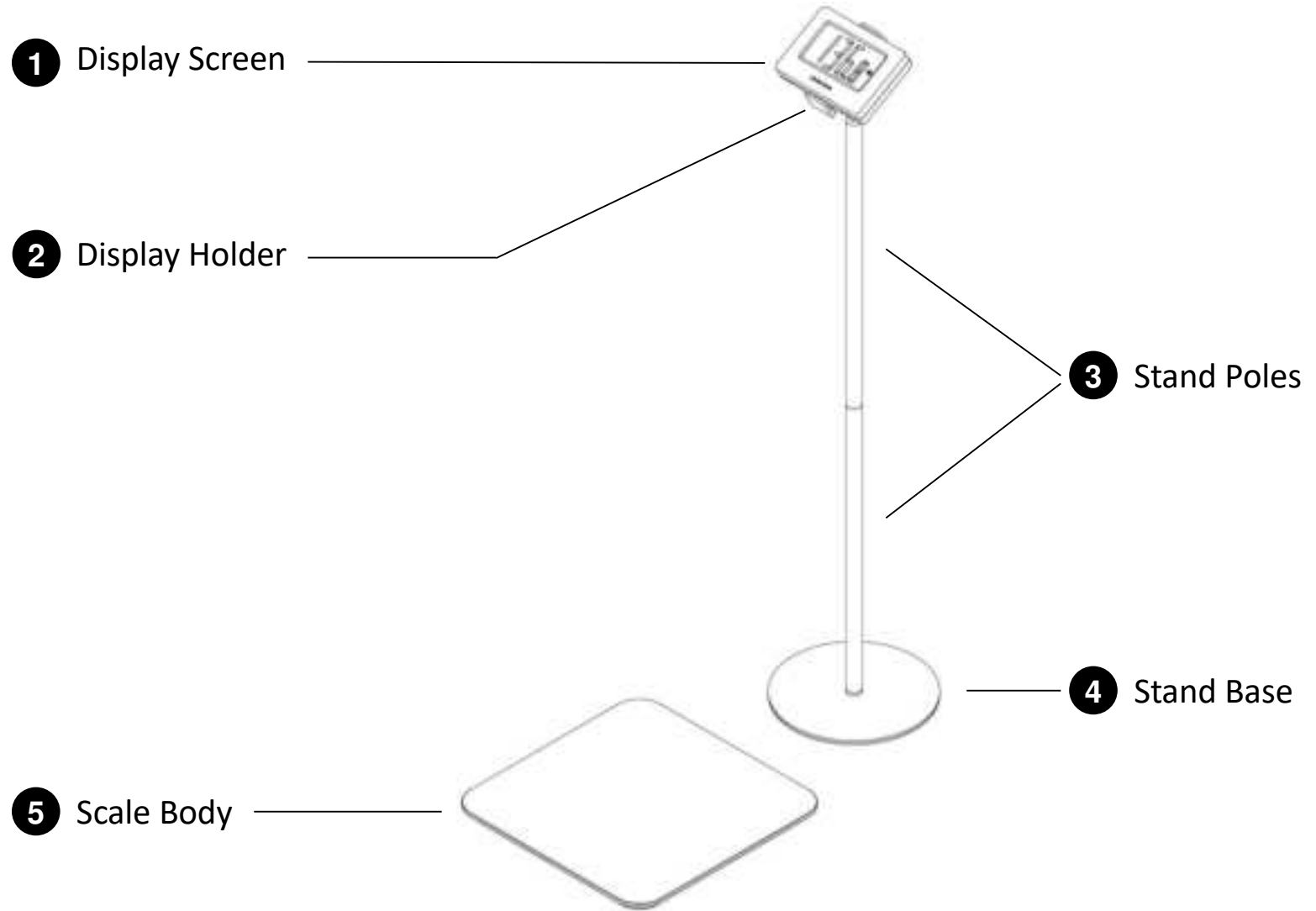
with Wireless Display

## User Manual



ZNEWTECH

# Getting to Know Your Znewtech Scale



# Part List

**A** Scale Body (1 Unit)



**B** Stand Poles (2 Units)



**C** Stand Base (1 Unit)



**D** Display Holder (1 Unit)



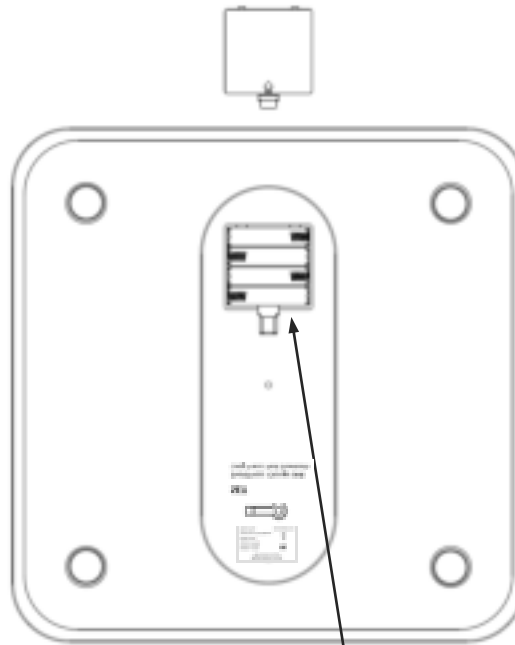
**E** Display Screen (1 Unit)



Assembly takes 5-10 minutes

# Assembling Your Scale in 5 Steps

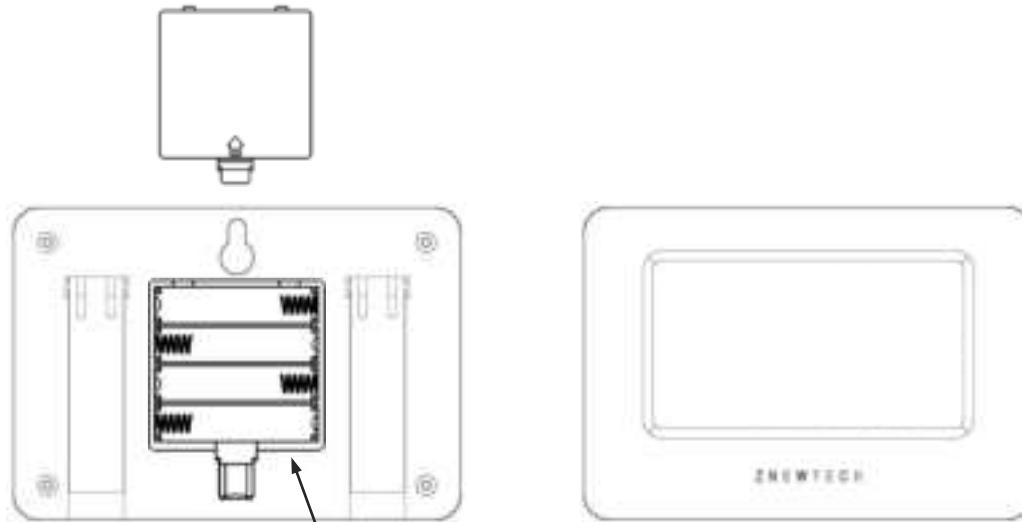
## Step 1 Install Batteries into **Scale Body**



Install 4 AAA batteries into the battery compartment located underneath the Scale Body

## Step 2

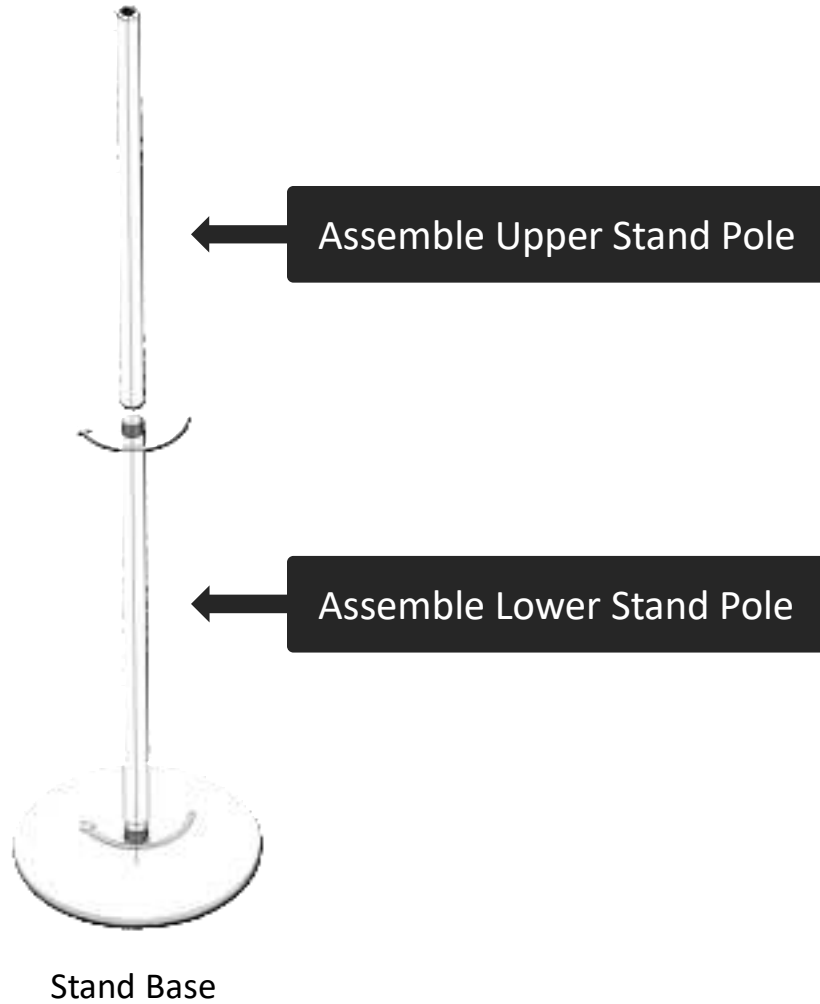
## Install Batteries into **Display Screen**



Install 4 AAA batteries into the battery compartment located at the back of the Display Screen

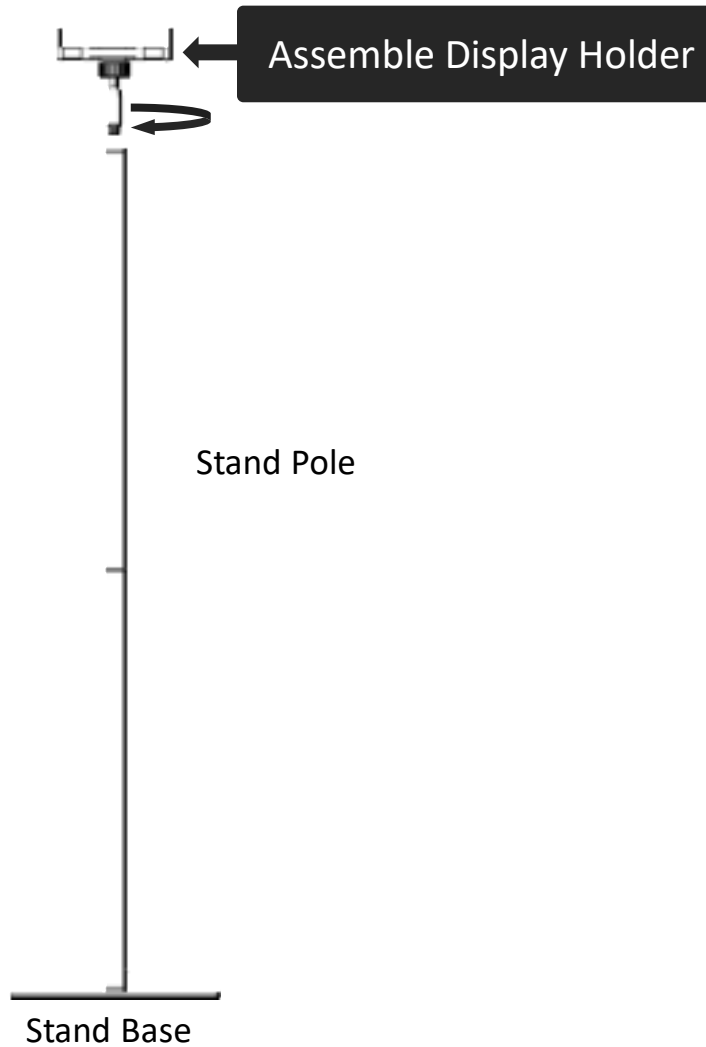
### Step 3

Connect **Stand Poles** with **Stand Base**



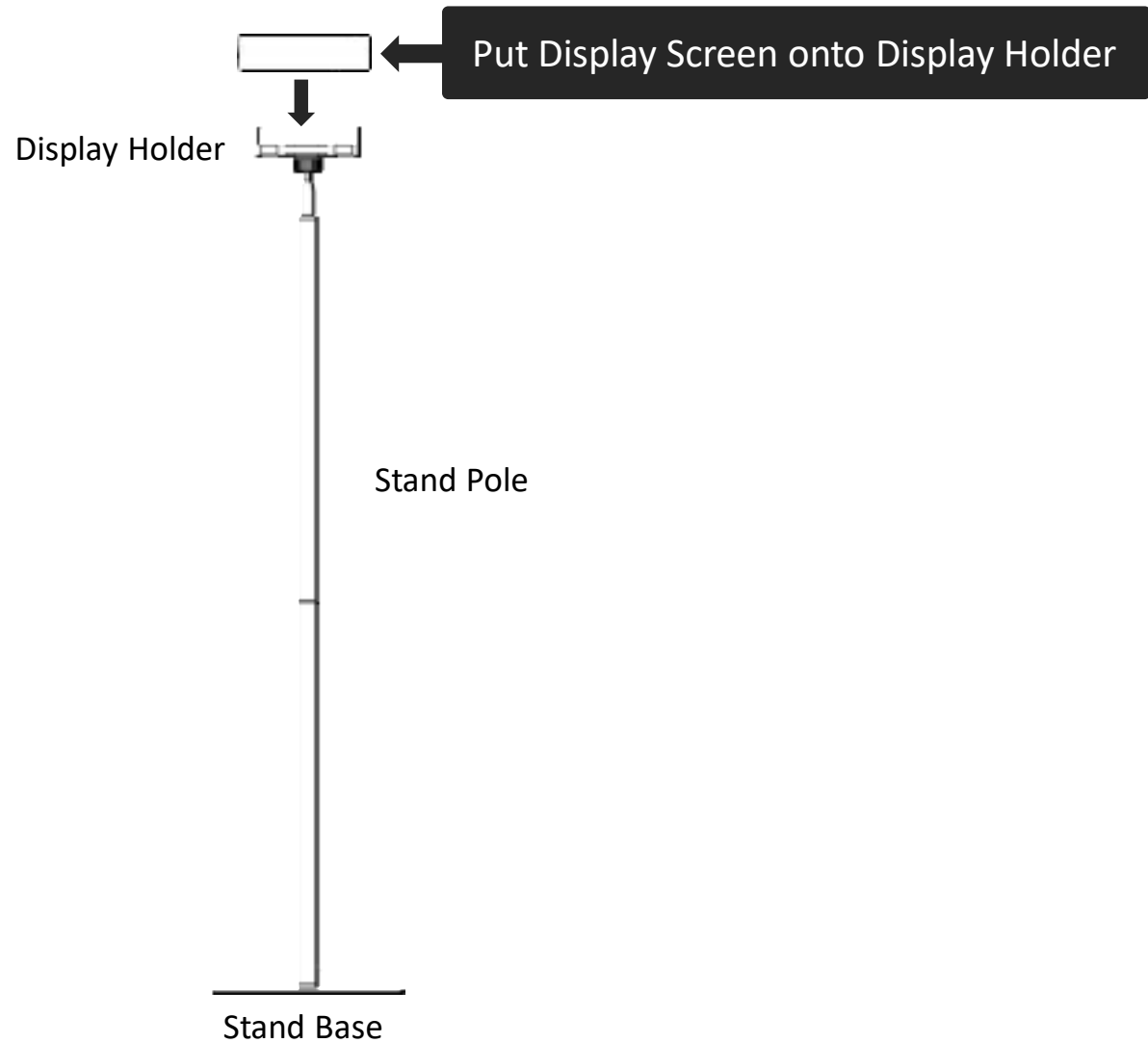
## Step 4

Connect **Display Holder** with **Stand Pole**



## Step 5

## Attach Display Screen





Congratulations!

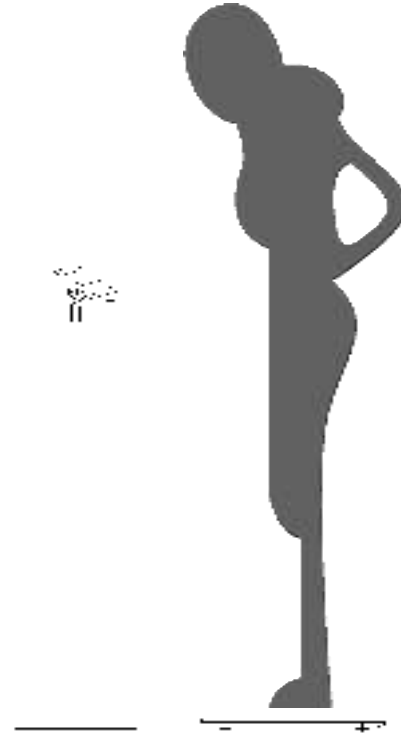
You have completed all assembly steps.



Place the scale body on a flat, hard surface, such as tile or hardwood floors, before weighing

# Measuring Your Weight

1. Place the scale on the **hard and flat** surface
2. Make sure the display screen is within 7 feet distance of the scale body
3. Step on the **scale body**, remain still and the scale will count up to your weight.
4. The display will **flash twice** when the weight is locked.
5. Your weight will be displayed for about **10 seconds**, and then the scale turns off automatically.

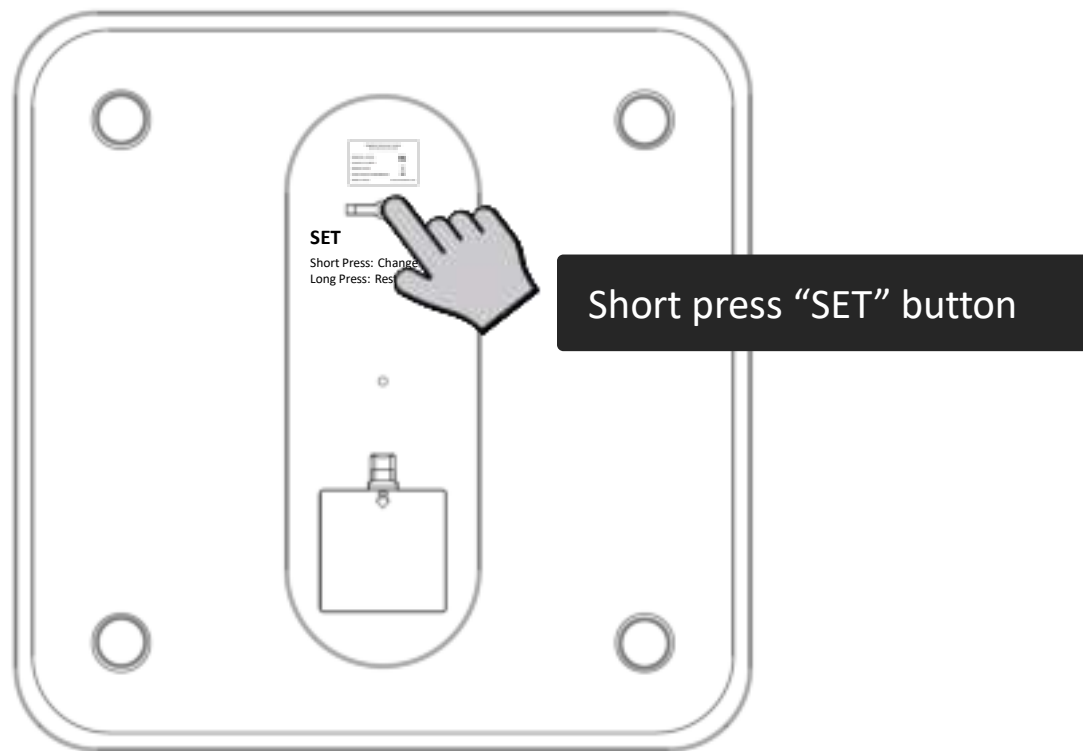


*Use the scale on a hard, level and even surface (no carpeting).  
Inconsistent and soft surfaces will cause inaccurate measurements.*

# Changing Weight Measurement Unit

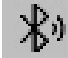
By default, your scale is set to calculate weights in **pound (lb)**.

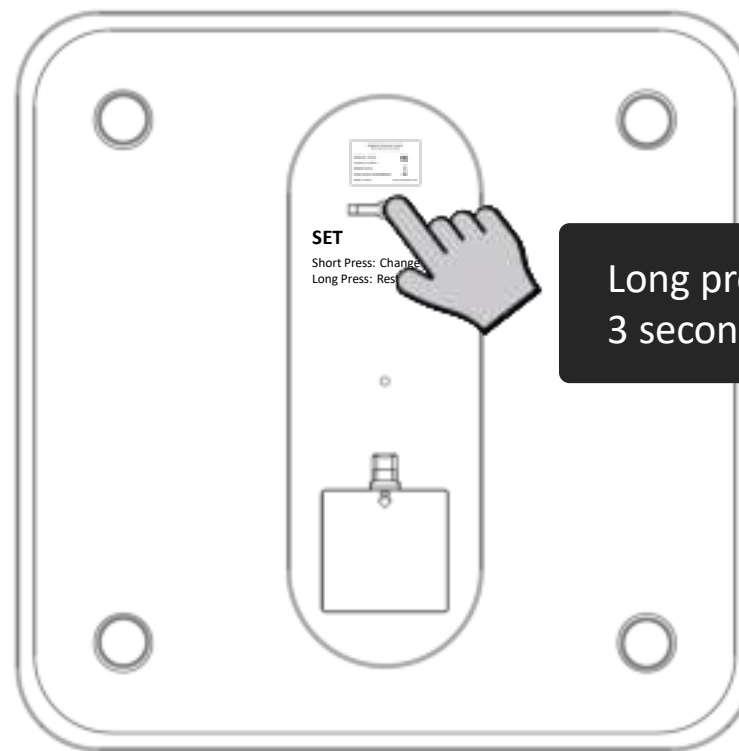
To change the unit of measurement between pounds (**lb**) and kilograms (**kg**), simply **short press** the **SET** button (located underneath the scale body).



# Re-pairing Bluetooth Connection

By design, your Scale Body and Display Screen connect automatically via Bluetooth.

If the Bluetooth connection is lost, a Bluetooth icon  will appear on the screen and start flashing, and a flashing light will appear on the scale body. You can **long press** the **SET** button (located underneath the scale body) for 3 seconds to manually re-pair the Bluetooth connection.



Long press “SET” button for 3 seconds



*If Bluetooth connection is already paired, long Press “SET” button will un-pair the Bluetooth connection*

## Troubleshooting

### No Display

Check if batteries are installed according to their +/- polarity

### Low Battery

Replace with new AAA batteries

### Lost Bluetooth Connection

Long press "SET" Button underneath the scale body

### Overload

Exceeded the maximum weight of 440 lb

### Connecting Bluetooth

The scale automatically scans and re-connects Bluetooth  
This is by design

Flashing Light  
on Scale Body

## Specifications

**Capacity:** 440 lb (200 kg)

**Weight Increments:** 0.2 lb (100 g)

**Switch-on Over:** 3kg / 6lb

**Power Source:** 8 AAA batteries

**Unit Modes:** lb/kg

**Platform Size:** 12" x 12" (31 cm x 31 cm)

**Display Stand Height:** 36 " (92 cm)

## Support

Our official website: [www.znewtech.com](http://www.znewtech.com)

Contact us at [support@znewtech.com](mailto:support@znewtech.com)

## Warranty

**One-Year Limited Warranty**

Contact us at [support@znewtech.com](mailto:support@znewtech.com)

FCC Warning:

This equipment has been tested and found to comply with the limits for a Class B digital device, pursuant to part 15 of the FCC Rules. These limits are designed to provide reasonable protection against harmful interference in a residential installation. This equipment generates, uses and can radiate radio frequency energy and, if not installed and used in accordance with the instructions, may cause harmful interference to radio communications. However, there is no guarantee that interference will not occur in a particular installation. If this equipment does cause harmful interference to radio or television reception, which can be determined by turning the equipment off and on, the user is encouraged to try to correct the interference by one or more of the following measures:

- Reorient or relocate the receiving antenna.
- Increase the separation between the equipment and receiver.
- Connect the equipment into an outlet on a circuit different from that to which the receiver is connected.
- Consult the dealer or an experienced radio/TV technician for help.

Caution: Any changes or modifications to this device not explicitly approved by manufacturer could void your authority to operate this equipment.

This device complies with part 15 of the FCC Rules. Operation is subject to the following two conditions:

(1) This device may not cause harmful interference, and (2) this device must accept any interference received, including interference that may cause undesired operation.

This equipment complies with FCC radiation exposure limits set forth for an uncontrolled environment. This equipment should be installed and operated with minimum distance 0cm between the radiator and your body.