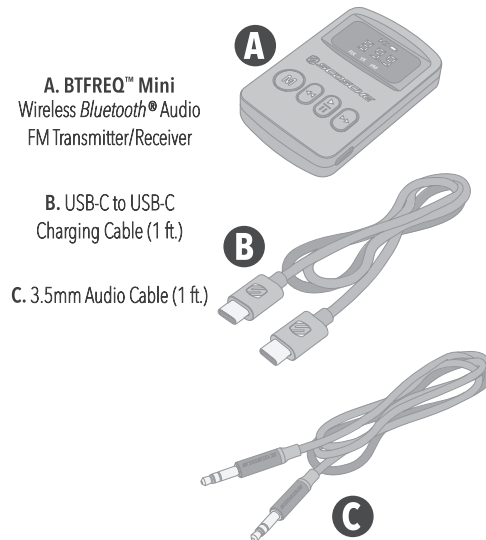




INCLUDED ELEMENTS



DEVICE SETUP

SECTION A - Overview

SECTION B - Charging & Power On/Off

SECTION C - Bluetooth Receiver Mode (RX)

SECTION D - Bluetooth Transmitter Mode (TX)

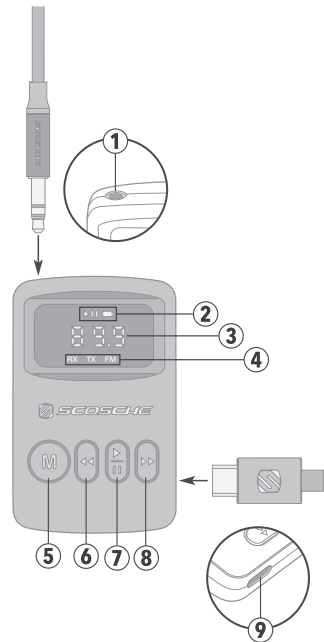
SECTION E - FM Radio Mode (FM)

SECTION F - Audio Playback Functions*

*Note: BTFREQ Mini supports audio playback only. It does not support hands-free calling.

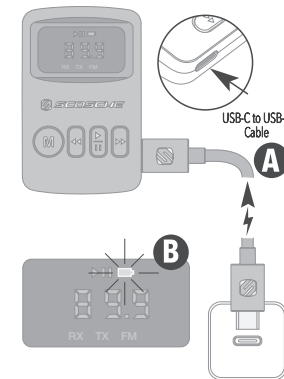
SECTION A

1. 3.5mm Audio Jack
2. Play/Pause & Battery Indicators
3. LED Display
4. RX/TX/FM Mode Indicator
5. Power/Mode Button
6. Track Back
7. Play/Pause Button
8. Track Forward
9. USB-C Charging Port

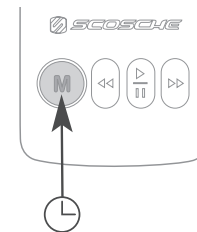


SECTION B

Charging
Use the included cable (A) to connect BTFREQ Mini to a USB-C charger or power source (not included). The battery indicator (B) will illuminate while charging and shut off when charging is complete.



Power On/Off
Press and hold the Mode (M) button to turn the unit on or off.

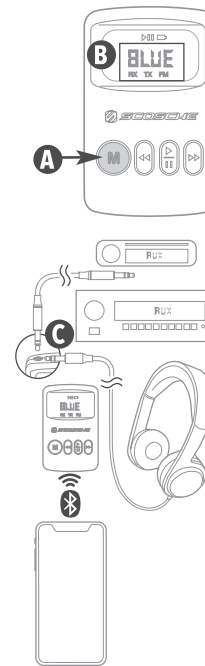


SECTION C

Bluetooth Receiver Mode (RX)
Input : Bluetooth audio device (wireless)*
Output: Car or home stereo with 3.5mm AUX-IN (cable included), or 3.5mm wired headphones

1. Short-press the MODE button (A) until the RX mode indicator illuminates, and "BLUE" appears on the display (B).
2. Connect the 3.5mm jack on the BTFREQ (C) to an audio output source (examples listed above).

*Note: BTFREQ automatically pairs with Bluetooth device when powered on. If needed, double-press MODE button (A) to manually pair the device. Find and select "Scosche BTRFM" on your Bluetooth device.



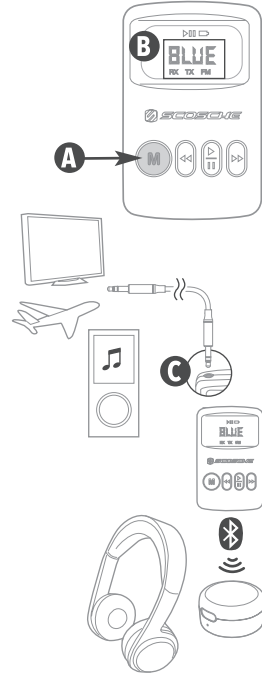
SECTION D

Bluetooth Transmitter Mode (TX)

Input: Audio device with 3.5mm AUX-OUT (3.5mm audio cable included)

Output: Bluetooth wireless audio receiver, speaker, or headphones

1. Short-press the MODE button (A) until the TX mode indicator illuminates, and "BLUE" appears on the display (B).
2. Connect the 3.5mm jack on the BTFREQ (C) to an audio input source, listed above.



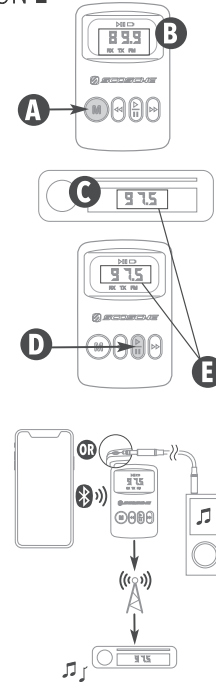
SECTION E

FM Radio Mode (FM)

Input: Bluetooth audio device (wireless) OR audio device with 3.5mm AUX-OUT (3.5mm cable included)

Output: FM audio (wireless)

1. Short-press the MODE button (A) until the FM mode indicator illuminates, and an FM frequency number appears on the display (B).
2. Tune your FM car or home audio receiver to a frequency with no radio station reception (C).
3. Press and hold the PLAY/PAUSE button (D) until the FM frequency number on the BTFREQ matches the frequency on the FM audio receiver (E).



SECTION F

BTFREQ Mini Audio Playback
Note: For best results, turn volume up on input device, and control playback volume on output device.

M	Power On/Off: Press and hold RX Mode: Press once TX Mode: Press once FM Mode: Press once Enter Pairing Mode: Press twice
◀◀	Track Back: Press once
▶	Play: Press once
⏸	Pause: Press once
▶▶	Frequency: Press and hold Track Forward: Press once

SPECIFICATIONS

Audio Playback Time: 5 hrs.

Charge Time: 2 hrs.

Battery: 300 mAh

Charge Input: 5 V== 500mA

FM Transmitter Frequency Range: 88.1 - 107.9MHz (200 KHz steps)

Bluetooth v5.3

FCC Compliance Statement

This device complies with part 15 of the FCC Rules. Operation is subject to the following two conditions: (1) This device may not cause harmful interference, and (2) this device must accept any interference received, including interference that may cause undesired operation.

Please note that changes or modifications to this product not expressly approved by the party responsible for compliance could void the user's authority to operate the equipment.

This equipment has been tested and found to comply with the limits for a Class B digital device, pursuant to part 15 of the FCC Rules. These limits are designed to provide reasonable protection against harmful interference in a residential installation. This equipment generates, uses and can radiate radio frequency energy and, if not installed and used in accordance with the instructions, may cause harmful interference to radio communications. However, there is no guarantee that interference will not occur in a particular installation.

If this equipment does cause harmful interference to radio or television reception, which can be determined by turning the equipment off and on, the user is encouraged to try to correct the interference by one or more of the following measures:

- Reorient or relocate the receiving antenna.
- Increase the separation between the equipment and receiver.
- Connect the equipment into an outlet on a circuit different from that to which the receiver is connected.
- Consult the dealer or an experienced radio/TV technician for help.

Canadian Compliance Statement

This device complies with Industry Canada's license-exempt RSSs. Operation is subject to the following two conditions: (1) this device may not cause interference and (2) this device must accept any interference, including interference that may cause undesired operation of the device.

This Class [B] digital apparatus complies with Canadian ICES-003, RSS-Gen and RSS-210.

BTFREQ Mini How-To Video ...



Scosche Industries
1550 Pacific Avenue
Oxnard, California 93033
Phone: 800-363-4490 x1 / 805-486-4450 x1
www.scosche.com
©2023 Scosche Industries

Scosche & BTFREQ are trademarks of Scosche Industries.
Other marks or brands are the property of their respective owners.
Devices and or appearance may vary.

Designed in Oxnard, California

SI BTRFM 10/23