

# Quick Reference Install Guide

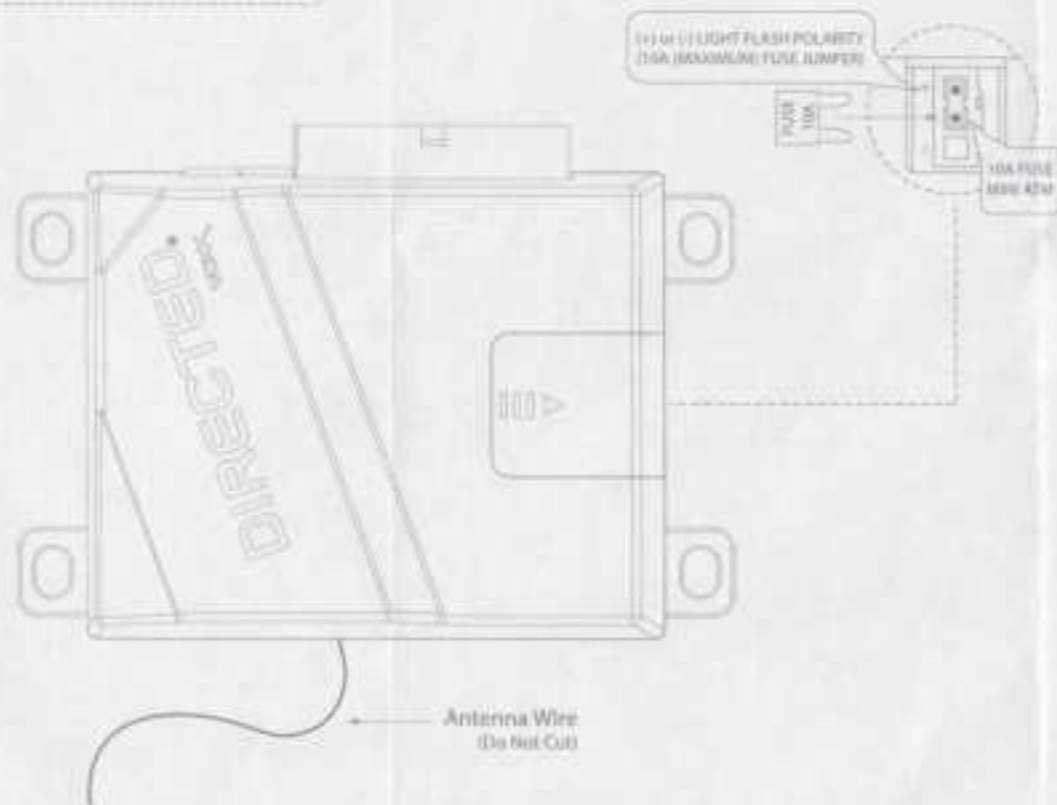
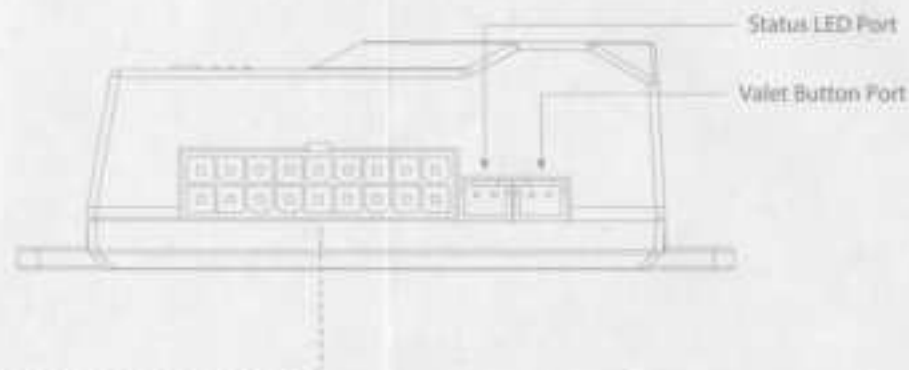
## 2103V Security System

### Wiring Connections

#### Primary Harness, White 18-pin connector

1	RED	12VDC (30A MAX) 1.5A FUSED Main power input
2	BLUE	12VDC SECOND UNLOCK OUTPUT
3	BLACK/WHITE (1)	DOORLIGHT SUPERVISION RELAY INPUT REF
4	BLACK/WHITE (2)	DOORLIGHT SUPERVISION RELAY OUTPUT A/B
5	GREEN/BLACK	DOOR LOCK AND CHIRP OUTPUT
6	WHITE/BLACK	DOOR LOCK REF NORMALLY CLOSED
7	VIOLET/BLACK	DOOR LOCK REF NORMALLY OPEN INPUT
8	BLUE/BLACK	DOOR UNLOCK REF COMMON OUTPUT
9	VIOLET	DOOR UNLOCK REF NORMALLY OPEN INPUT
10	WHITE	PARKING LIGHT OUTPUT (+/- Polarity selectable by trim)
11	BLACK	12V CHIRP SUPPLANE
12	BROWN	12V NORM HOME OUTPUT
13	LT GREEN/BLACK	12VDC FACTORY ALARM SQUAWK OUTPUT
14	WHITE/BLUE	12VDC ALAR 2 OUTPUT Channel 2
15	YELLOW	12V SWITCHED SWITCH SENSE INPUT
16	BROWN	12VDC SECOND WIRE ARMED OUTPUT
17	BROWN/BLACK	DOOR UNLOCK REF NORMALLY CLOSED
18	RED/WHITE	12VDC TRAILER ALAR 1 OUTPUT Channel 1

Important: NEVER connect low current outputs directly to a motor or high current output WITHOUT a relay.





## Basic Remote Functions

---

Button	Function
	ARM
	DISARM
	PANIC
AUX	TRUNK / AUX

## Advanced Remote Functions

---

Button	Press Function	Hold Function
 + 	AUX 2 (PRESS Together)	AUX 2 - VALIDITY (HOLD Together)

## Programming System Features

System Features dictate how the unit operates. It is possible to access and change most of the feature settings using the Valet button.

1. Turn the ignition ON, and then OFF.
2. Within 3 seconds, press and release the Valet button to select the feature (1-15, see Features table). After pressing and releasing corresponding to the selected feature, then press the Valet button once more and hold it.
3. The LED flashes and the horn or siren sounds to confirm the selection. Do not release Valet button.
4. While still holding the Valet button, press the **LOCK** button on the remote to set the feature to Option 1 (LED ON) or press the **UNLOCK** button to set the feature to Option 2 (LED OFF).
5. Release the Valet button and turn the ignition ON to exit programming, or repeat this process to change additional feature options.

Programming routine exits if any of the following occurs:

- The ignition is turned ON.
- There is no activity for 15 seconds.
- The Valet button is pressed too many times.

## Reset and Delete

**Important:** The "Delete all transmitters & Reset features" option resets all programmed settings to their default factory state. Before performing this procedure, it is recommended to make note of all programmed changes.

1. Turn the ignition ON.
2. Within 3 seconds, press and release the Valet button 8 times (channel 8) and then press and hold the Valet button once more. The horn or siren sounds and the LED blinks 8 times indicating the **Delete all transmitters & Reset features** channel is accessed. Do not release Valet button.
3. While still holding the Valet button, press the **LOCK** button on any paired remote control. The horn or siren sounds indicating the Delete / Reset procedure was successful and sounds again to confirm exit from programming routine.

Programming routine exits if any of the following occurs:

- The ignition is turned OFF.
- There is no activity for 15 seconds.
- The Valet button is pressed too many times.

## Feature Menus

Default settings are in **bold type**.

### Features

Feature #	Option 1 (LED On) 1 Second (Horn / Siren)	Option 2 (LED Off) 2 Seconds (Horn / Siren)
1	<b>Ignition controlled Lock ON</b>	Ignition controlled Lock OFF
2	<b>Ignition controlled Unlock ON</b>	Ignition controlled Unlock OFF
3	<b>Ignition controlled Dometlight ON</b>	Ignition controlled Dometlight OFF
4	<b>0.8 Second Door Lock Pulse</b>	0.5 Second Door Lock Pulse / 0.4 Sec.
5	<b>Double Pulse Unlock OFF</b>	Double Pulse Unlock ON
6	<b>Double Pulse Lock OFF</b>	Double Pulse Lock ON
7	<b>Comfort closure OFF</b>	Comfort closure ON
8	<b>Code Hopping ON</b>	Code Hopping OFF

## Remote Pairing (4-Button Auto Learn)

The system comes with two remote controls that have been paired to the control module. The control module can store up to four different remote control codes in memory. Follow the procedure below to pair additional or replacement remotes. For alternate pairing configurations and channel options, see "Remote control (transmitter) configurations" in the full installation guide.

1. Turn the ignition ON.
2. Within 3 seconds, press and release the Valet button 1 time (channel 1) and then press and hold the Valet button once more. The horn or siren sounds and the LED blinks 1 time indicating the **Auto Learn** channel is accessed. Do not release Valet button.
3. While still holding the Valet button, press the **LOCK** button to pair the remote control. The horn sounds indicating the pairing procedure was successful.

Programming routine exits if any of the following occurs:

- The ignition is turned OFF.
- There is no activity for 15 seconds.
- The Valet button is pressed too many times.

## Guide Translations

For a Spanish (La traducción al Español) or French (Traduction en française) version of the Installation Guide, please download it from [www.directtechs.com](http://www.directtechs.com) under "Resources".

### Scan QR for full Installation Guide

Looking for replacement parts?

The full installation manual now includes individual part numbers for each item included in this kit (ex. P/N: 150-112233).

Scan QR code below for more information.



**DIRECTED.**  
VOXX

# Model 2103V

## Owner's Guide

This product is intended for installation by a professional installer only! Attempts to install this product by a person other than a trained professional may result in severe damage to a vehicle's electrical system and components.

# Congratulations

Congratulations on the purchase of your VIPER® system. Reading this Owner's Guide prior to using your system will help maximize the use of your system and its many features. For additional information please contact your Authorized Dealer or visit [www.viper.com](http://www.viper.com).

## **After installation is completed, you should receive:**

- Two 1-Way remote controls (P/N: 7147VS)
- Owner's Quick Reference Card



# Important Information

## **Safety Information**



Warning! Failure to heed the information in this guide can result in death, personal injury or property damage, and may also result in the illegal use of the system beyond its intended purpose.

## **Your Warranty**

Your system comes with a warranty. The warranty terms are detailed at the end of this guide. Make sure that you receive proof of purchase from your dealer, indicating the product was installed by an Authorized Dealer.

## **Replacement Remote Controls**

Please see your Authorized Dealer or visit us at [www.viper.com](http://www.viper.com) to order additional remote controls. Remote control part numbers are found on the back of the remote.

## **System Maintenance**

This system needs no specific maintenance beyond remote control battery replacement. See 'Battery Information' section for more details.

# 1-Way Remote Control






Feature	Description
Internal Antenna	Used for transmitting information
Transmit LED	Active when transmitting information
Command buttons	Used to perform locking, unlocking, auxiliary channel and panic activation.



# Remote Control Command Table



## Basic Remote Functions

---

Button	Function
	ARM
	DISARM
	PANIC
<b>AUX</b>	TRUNK / AUX

## Advanced Remote Functions

---

Button	Press Function	Hold Function
 + 	AUX 2 (PRESS Together)	AUX 2 - VALIDITY (HOLD Together)

# Remote Control Functions

The remote control buttons are used to send commands to the system. The descriptions below reflect the standard configuration for this system.

## **Lock**

Press and release **LOCK**.

The doors lock.

## **Unlock**

Press and release **UNLOCK**.

The doors unlock.

## **Audible Mode**

Audible Mode works by pressing the **AUX** button for less than one second before locking or unlocking.

## **Panic**

Press and hold **STAR**.

The panic feature is controlled by pressing this button for 2 seconds.

## **AUX 1**

Press and hold **AUX**.

An optional auxiliary function, such as trunk release, can be controlled by pressing this button for 1.5 seconds.)

The Aux 1 output controls \_\_\_\_\_.

## **AUX 2**

Press **LOCK** and **UNLOCK** simultaneously. A second optional auxiliary function can be activated by pressing these buttons simultaneously. The Aux 2 output controls \_\_\_\_\_.

# Dome Light Control

## **Unlock only**

The dome light activates for 30-seconds after the system is unlocked.

## **Ignition controlled**

The dome light activates for 30-seconds after the ignition is turned OFF. This feature can be programmed ON or OFF, by the dealer.

# Panic Mode

If you are threatened in or near your vehicle, you can attract attention by triggering the system with your remote.

Hold **STAR** for approximately two seconds, to enter Panic Mode. The siren sounds and the parking lights flash for the programmed siren duration. To stop Panic Mode at any time, press the **STAR**.

# Audible Mode

To temporarily turn on the lock or unlock horn honk(s), press **AUX** for less than one second before locking or unlocking. The confirmation honk(s) will be present for that one operation only.

# Battery Information

When the remote control battery begins to weaken, the operating range will be reduced.

## **Battery Replacement:**

If communication range is diminished, or the remote control ceases to function, the remote battery should be replaced. It is recommended to have your battery replaced by an Authorized Dealer. To gain access to the battery, the rear case will need to be separated from the transmitter. In some cases, remotes may have a small security screw(s) that needs to be removed prior to separating.

Note: USB-Rechargeable remote control batteries are not intended to be replaced. If your remote fails to charge, contact your Authorized Dealer.

**IMPORTANT:** Improper remote disassembly may result in injury or damage to the remote and or battery.

# Battery Disposal



We care about the environment. If you need to dispose of the battery, please do so in accordance with your local municipal requirements for battery disposal.

## Patent Information

This product may be covered by one or more of the patents found on our website. For a full list of patents, please visit:  
[www.voxxintl.com/company/patents](http://www.voxxintl.com/company/patents)

## Government Regulations

### **FCC Compliance**

This device complies with Part 15 of the FCC rules and with RSS-210 of Industry Canada. Operation is subject to the following two conditions:

1. This device may not cause harmful interference, and
2. This device must accept any interference received, including any interference that may cause undesired operation.

### **Warning!**

Changes or modifications not expressly approved by the party responsible for compliance could void the user's authority to operate the equipment.

# Warranty Information



## LIMITED LIFETIME WARRANTY

DIRECTED by VOXX LLC (the Company) warrants to the original purchaser of this product that should this product or any part thereof, under normal use and conditions, be proven defective in material or workmanship within the Lifetime from the date of original purchase in the original vehicle, such defect(s) will be repaired or replaced with new or reconditioned product, (at the Company's option) without charge for parts or repair labor. A transmitter for a vehicle security or remote start system is warranted for 12 months from the date of original purchase.

To obtain repair or replacement within the terms of this Warranty, the product is to be delivered with proof of warranty coverage (e.g. dated bill of sale), authorization number, specification of defect(s), transportation prepaid, to an approved warranty station. This warranty is not transferable.

This Warranty does not cover damage to the vehicle's electrical system or costs incurred for the installation, removal or reinstallation of the product. This Warranty does not cover batteries, broken LCD transmitter display screens, nor apply to any product or part thereof which, in the opinion of the Company, has suffered or been damaged through alteration, improper installation, mishandling, misuse, abuse, neglect, accident, or by removal or defacement of the factory serial number/bar code label(s).

This Warranty is in lieu of all other express warranties or liabilities. ANY IMPLIED WARRANTIES, INCLUDING ANY IMPLIED WARRANTY OF MERCHANTABILITY, SHALL BE LIMITED TO THE DURATION OF THIS WRITTEN WARRANTY. ANY ACTION FOR BREACH OF ANY WARRANTY HEREUNDER INCLUDING ANY IMPLIED WARRANTY OF MERCHANTABILITY MUST BE BROUGHT WITHIN A PERIOD OF 24 MONTHS FROM DATE OF ORIGINAL PURCHASE. IN NO CASE SHALL THE COMPANY BE LIABLE FOR ANY CONSEQUENTIAL OR INCIDENTAL DAMAGES FOR BREACH OF THIS OR ANY OTHER WARRANTY. No person or representative is authorized to assume for the Company any liability other than expressed herein in connection with the sale of this product.

The company does not warrant that this product cannot be compromised or circumvented. THE EXTENT OF THE COMPANY'S LIABILITY UNDER THIS WARRANTY IS LIMITED TO THE REPAIR OR REPLACEMENT PROVIDED ABOVE AND, IN NO EVENT, SHALL THE COMPANY'S LIABILITY EXCEED THE PURCHASE PRICE PAID BY PURCHASER FOR THE PRODUCT WITHOUT INSTALLATION LABOR.

Some states do not allow limitations on how long an implied warranty lasts or the exclusion or limitation of incidental or consequential damage so the above limitations or exclusions may not apply to you. This Warranty gives you specific legal rights and you may also have other rights which vary from state to state.

DIRECTED by VOXX LLC, 2351 J. Lawson Blvd., Orlando, Florida 32824

# VIPER®

NO ONE DARES COME CLOSE®

## Scan QR for complete 2103V Owner's Guide

### Basic Remote Functions

---



LOCK



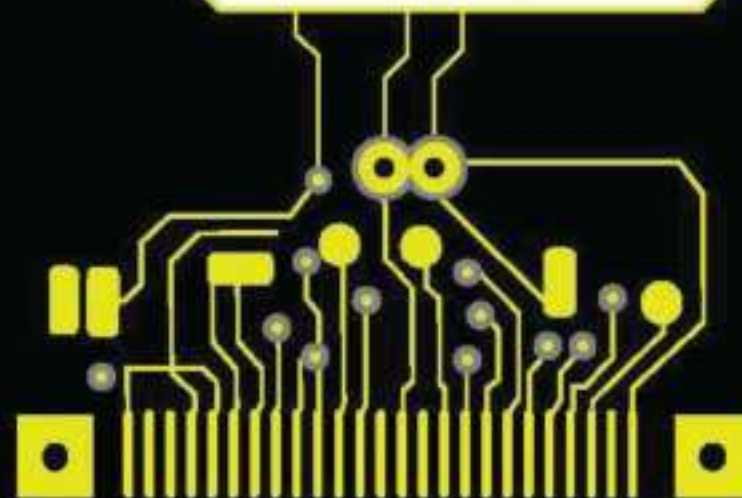
UNLOCK



PANIC

**AUX**

TRUNK / AUX



500-10833 (Rev 1.0)