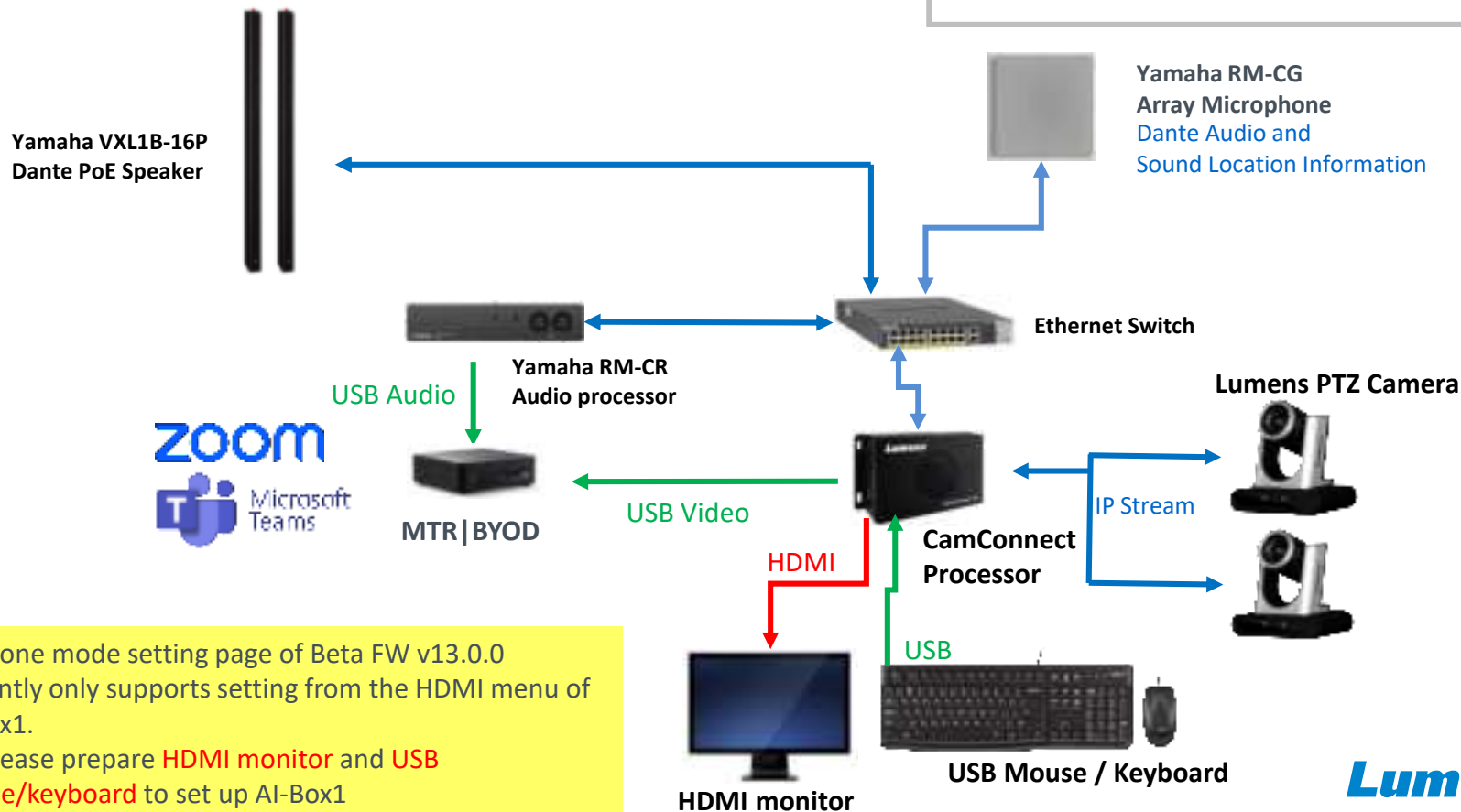




Yamaha RM-CG(Coordinate) Zone Mode setting guide

Peripheral equipment

Your Reliable Partner



The Zone mode setting page of Beta FW v13.0.0 currently only supports setting from the HDMI menu of AI-Box1.

So, please prepare **HDMI monitor** and **USB mouse/keyboard** to set up AI-Box1

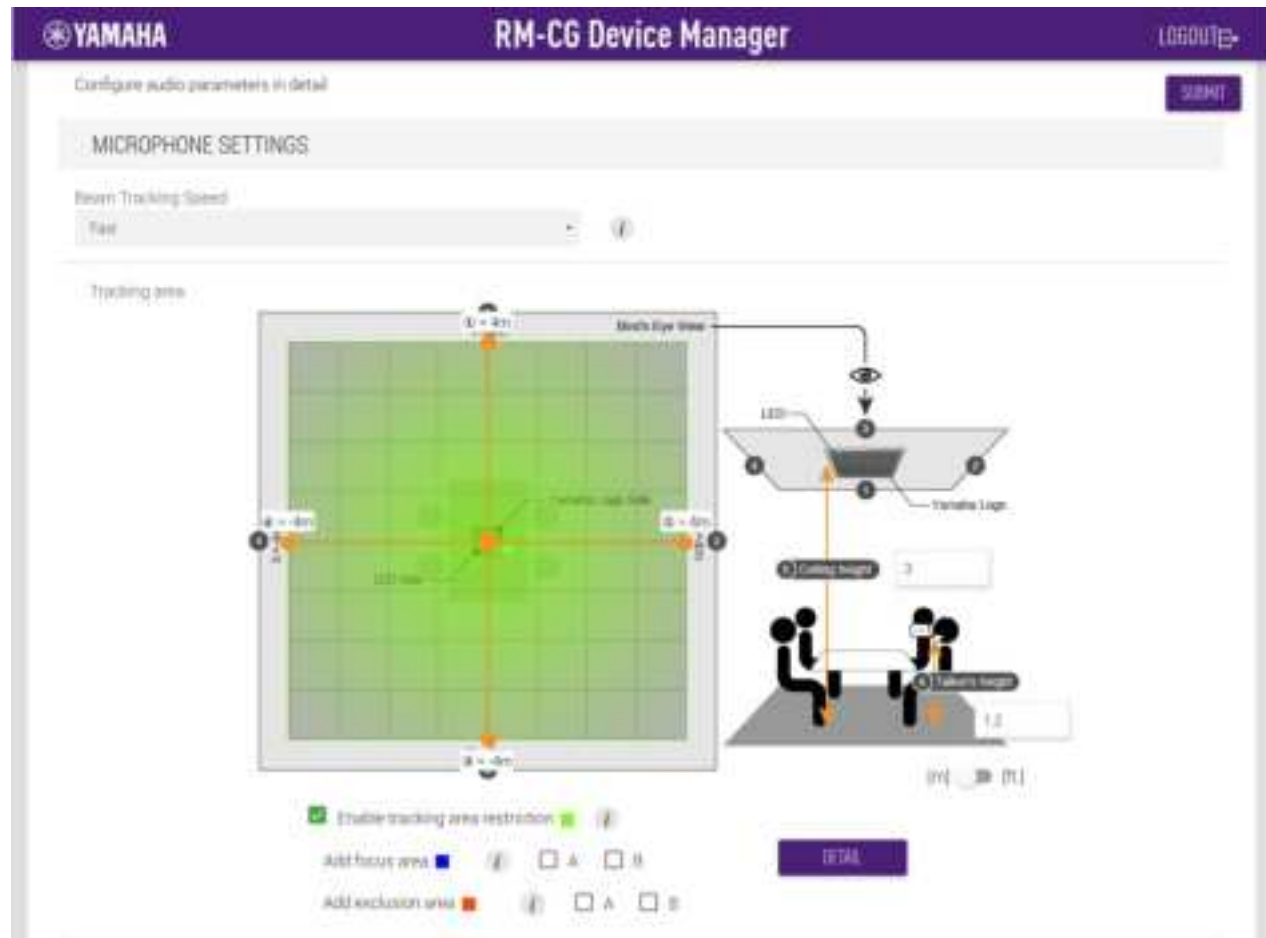
Lumens®

Copyright © Lumens. All rights reserved.

Microphone Setting

Please set the **Ceiling height** and **talker's height** of Yamaha RM-CG according to the installation scenario.

According to our experience, **talker's high** will be set between 1.2~1.5



Your Reliable Partner

lumens

Copyright © Lumens. All rights reserved.

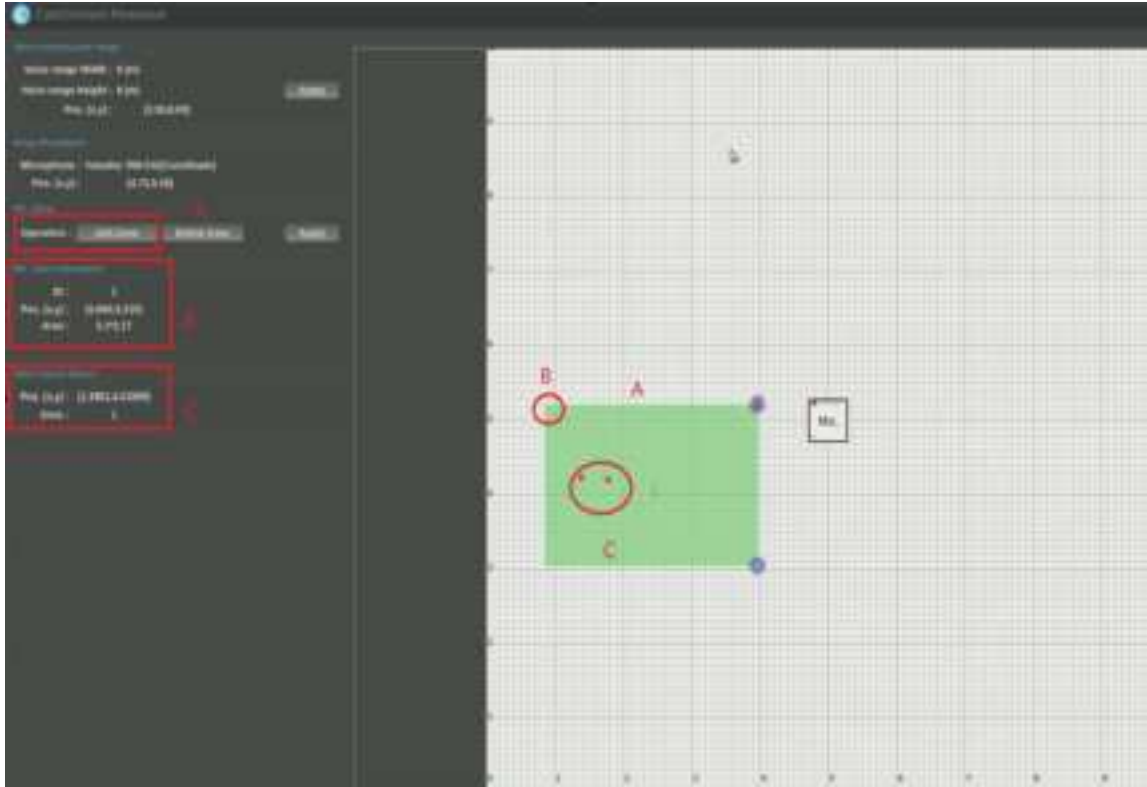
Connect Yamaha RM-CG and enable zone mode.



Important:

1. Please select “**Devices**” as “**Yamaha RM-CG(Coordinate)**”
2. Enabling zone mode will activate maximum 128 zones.
3. For zone mode, only use [**Enable zone**]
4. Click the [**Zone settings**].
5. Zone map and XY have nothing to do with this zone mode feature. DO NOT use together.

Adding, positioning, re-sizing and deleting zones



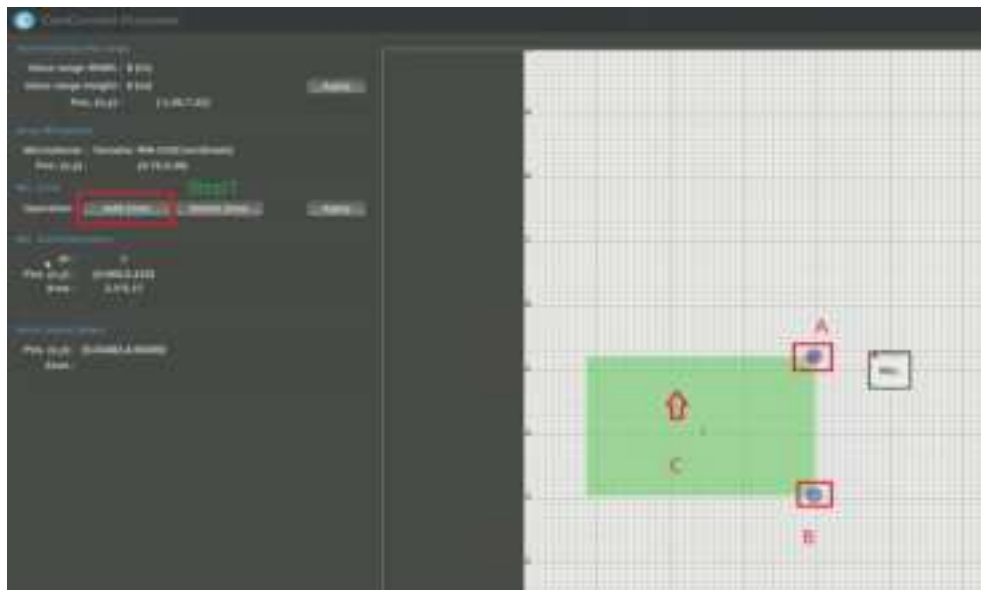
- A. Click [**Add Zone**] once to create zone.

Important: To resize, position or delete zone you MUST click [Add Zone] again.

- B. Shows X,Y position of zone in canvas, measured from the top left. Also the Area of the zone is shown in info area.

- C. Shows voice source X,Y location and from which zone its coming from, position your zone around this.

Resizing and deleting zone



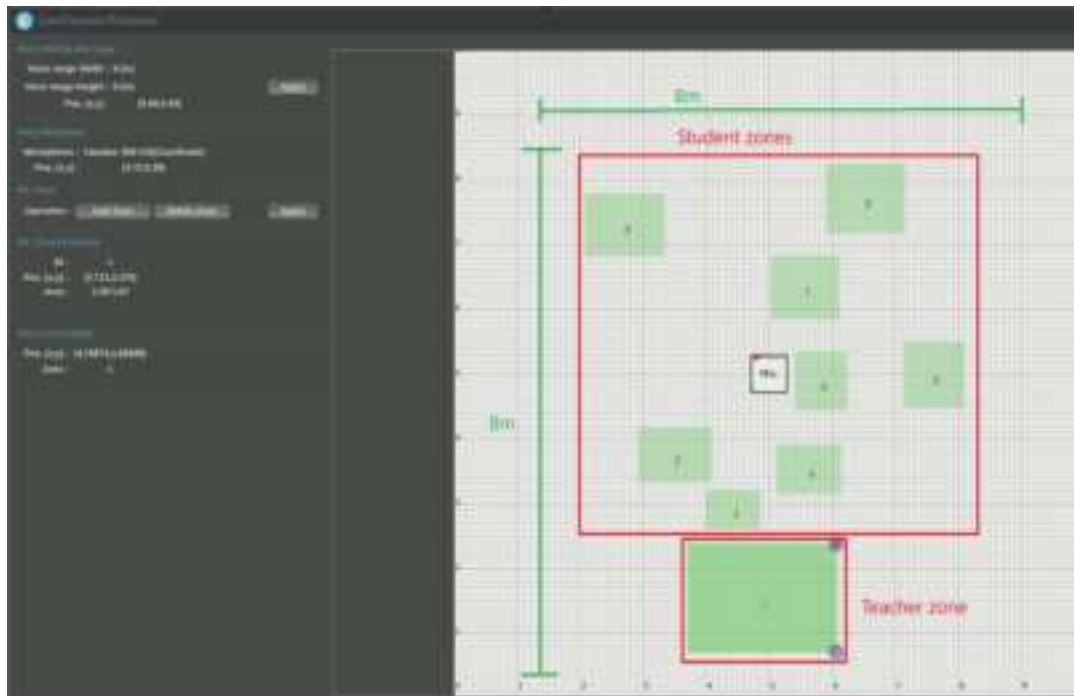
Step1: after adding a zone, to resize or position, click on add zone again.

Step 2: click on the zone you want to work on.

- A. Option to delete the zone.
- B. Option to resize the zone.
- C. Click on the zone and you can move it around in the canvas.

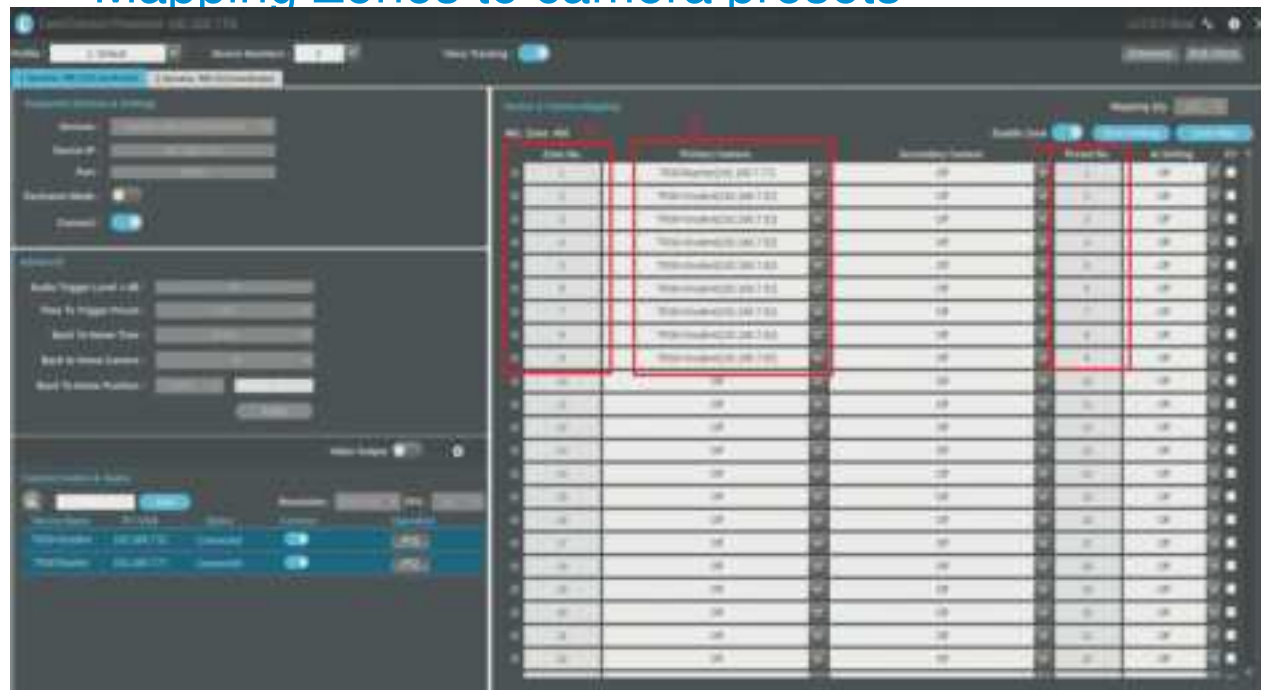
Step 3: click apply.

Example of Zones and preset in real life use case



- A. 9 zones are created inside the 8m x 8m RM-CG pickup range.
 - B. Each zone is labelled with an ID number, 1 to 9. These ID are incremental as they are being added.
 - C. Press apply after finishing work in zone settings.
 - Apply button, in Mic. Zone section
- Note: see [others] section for more information and things to note about zones.

Mapping Zones to camera presets

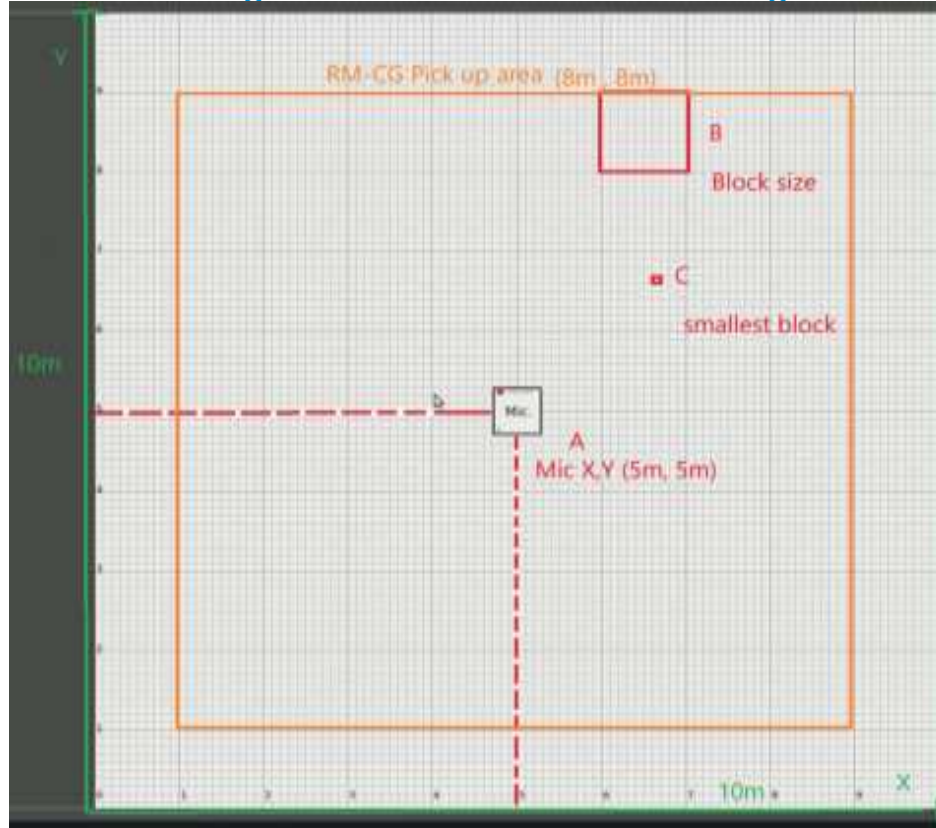


- Zone No. is the Zone ID in Zone Settings.
- Map camera (s) to each zone as required.
- Assign preset per camera to each zone as required.

NOTE:

DO NOT ENABLE XY FOR THE ZONES.
DO NOT OPERATE ZONE MAP, THIS IS A DIFFERENT FEATURE.

Others: Things to note about zone settings canvas area



1. The canvas (drawing area) size is 10m x 10m.
2. The RM-CG pickup range is 8m x 8m, place your zones inside this area.

Labelled:

- A. RM-CG is located at x, y, (5m, 5m) of canvas.
- B. The canvas block size is (1m x 1m).
- C. The smallest block size is (10 cm x 10 cm).

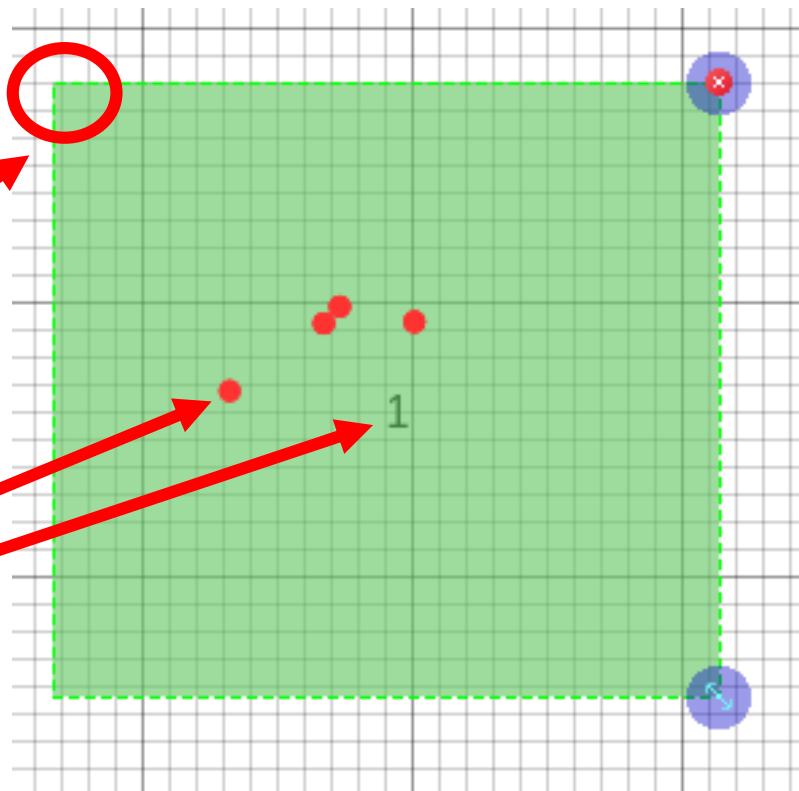
Others: zone information

Mic. Zone Information

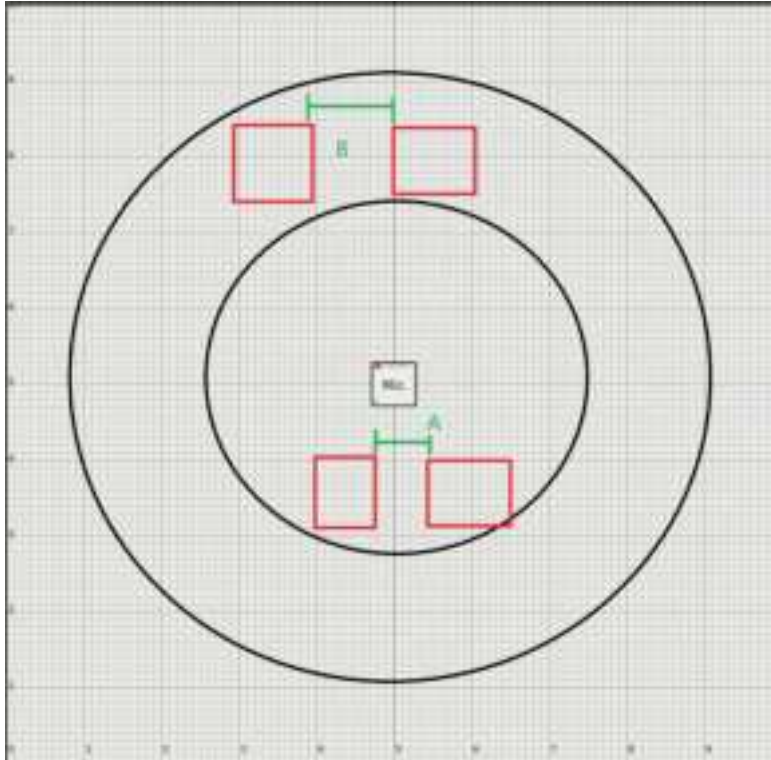
ID :	1
Pos. (x,y) :	(5.855,8.505)
Area :	2.46*2.23

Voice Source Detect

Pos. (x,y) :	(6.568,6.41183)
Zone :	1



Others: Distance between zones in relation to distance from RM-CG



- A. The closer you are to microphone, the closest distance between zones is 60cm.
- B. The further away you are from the microphone, the closest distance between zones is 100cm.

Thank You!



MyLumens.com



Contact Lumens

