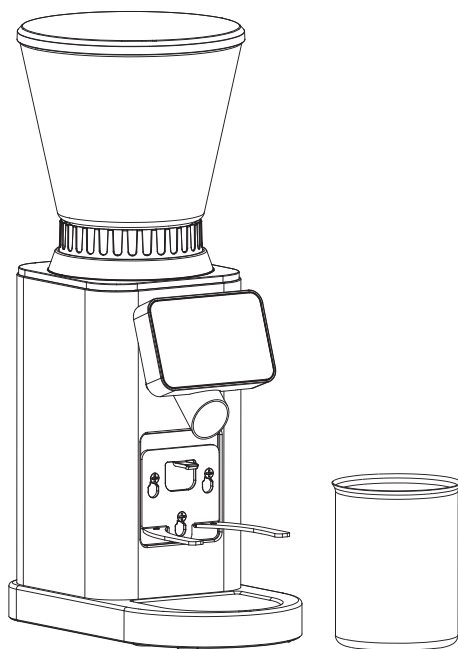




# Instruction Manual

## Coffee Grinder



BRAND: amzchef  
MODEL NO.: CG209  
120V~ 60Hz 150W

PLEASE READ INSTRUCTIONS CAREFULLY BEFORE ASSEMBLY  
RETAIN THIS MANUAL FOR FUTURE REFERENCE

# Contents

Safety Instructions .....	1
Features .....	3
Operating Instructions .....	4
Assemble and Disassemble the Bean Hopper .....	6
Grind Size Setting Recommendations .....	7
Cleaning & Maintenance .....	7
Troubleshooting .....	9
Technical Information .....	10
Warranty .....	11

# Safety Instructions

## IMPORTANT SAFEGUARDS

Please read the safety instructions and the operating instructions in full. To avoid danger you must follow the safety and operating instructions.

- Appliance can be used by children aged from 8 years and above and persons with reduced physical, sensory or mental capabilities or lack of experience and knowledge if they have been given supervision or instruction concerning use of the appliance in a safe way and understand the hazards involved.
- Children shall not play with the appliance. Keep the appliance and its cord out of reach of children. Cleaning and user maintenance shall not be made by children without supervision.
- If the supply cord is damaged, it must be replaced by the manufacturer, its service agent or similarly qualified persons in order to avoid a hazard.
- Switch off the appliance and disconnect from supply before changing accessories or approaching parts that move in use.

**This appliances is designed to be used in households and for similar uses such as:**

- In kitchens for employees in shops, offices and other commercial areas.
- In agricultural businesses.
- In motels, hotels and other residential facilities and in bed and breakfast guesthouses.



Any other use is considered improper and can lead to personal injury and property damage.  
Manufacturer shall not be liable for damage resulting from improper use.

**Please note the following information to avoid injuries caused by misuse:**

1. The appliance must not be in a cupboard during use.
2. The appliance must be connected to a properly installed earthed socket.
3. The appliance must always be disconnected from the mains supply when left unattended and before assembly, disassembly or cleaning.
4. Before use, make sure that there are no foreign objects in the bean container of the

coffee grinder.

5. Do not remove the lid of the bean container until the grinder has come to a complete stop.

6. Never place your fingers or hands near the grinder mechanism and/or ground coffee chute when the grinder is in use.

7. Do not reach into the ground coffee chute during use.

8. Do not allow the power cord to come into contact with hot surfaces.

9. Do not use the appliance if the power cord is damaged.

10. Never immerse the appliance in water.

11. Do not clean parts that come into contact with food with aggressive detergents or scouring milk. Remove detergent residues with clean water. Further information on cleaning can be found under “Cleaning and Care”.

12. Do not clean parts of the coffee grinder in the dishwasher.

13. Always use a soft brush to clean the grinder mechanism. Do not use water or soap for cleaning.

14. The appliance may be used by persons with reduced physical, sensory or mental abilities or lack of experience and/or knowledge if they are supervised or have been instructed in the safe use of the appliance and have understood the hazards involved.

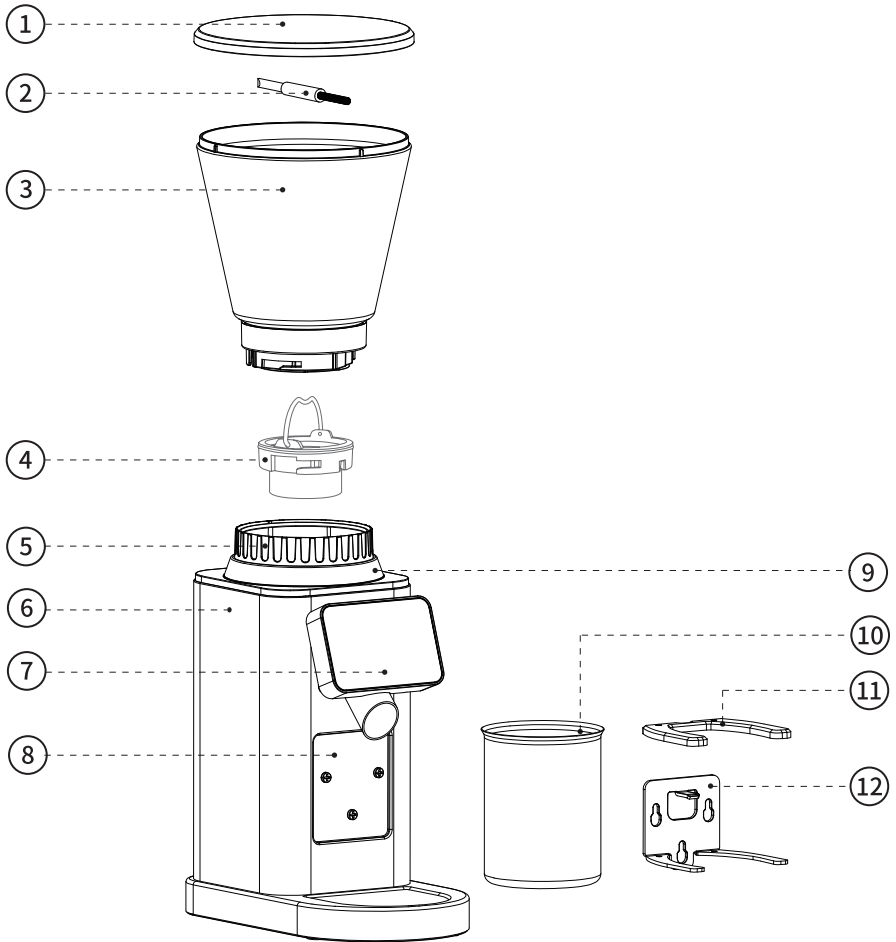
15. Do not allow children to play with the appliance.

16. Replacement of the power cable and any other repairs must only be carried out by manufacturer.

17. Use of accessories not recommended or sold by the manufacturer may result in fire, electric shock, or personal injury.

18. The appliance must not be used by children. Keep the appliance and its power cord away from children.

# Features



① Bean Hopper Lid

③ Bean Hopper

⑤ Grind Size Dial

⑦ Control panel

⑨ Ring of the Base

⑪ Portafilter holder pad

② Cleaning Brush

④ Stainless Steel Conical Burrs

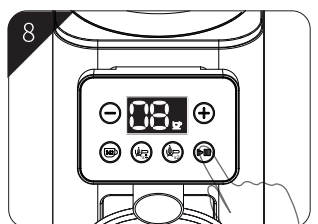
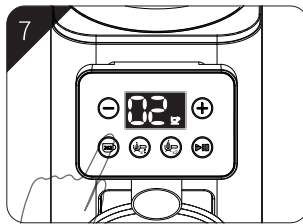
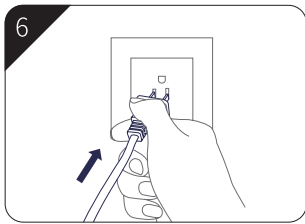
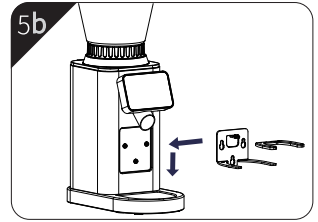
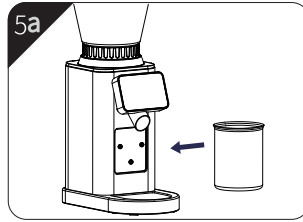
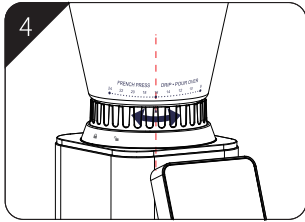
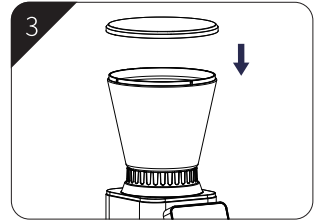
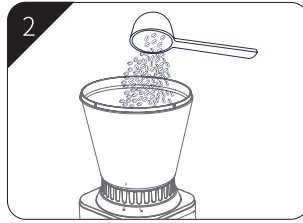
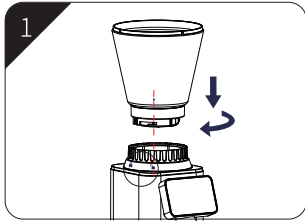
⑥ Main housing

⑧ Portafilter holder base

⑩ Stainless Steel Cup

⑫ Portafilter holder

# Operating Instructions



1. Assemble the Bean Hopper (Refer to the "Assemble and Disassemble the Bean Hopper" ).

2. Fill coffee beans into Bean Hopper.

3. Close the lid.

4. Select your Grind Size

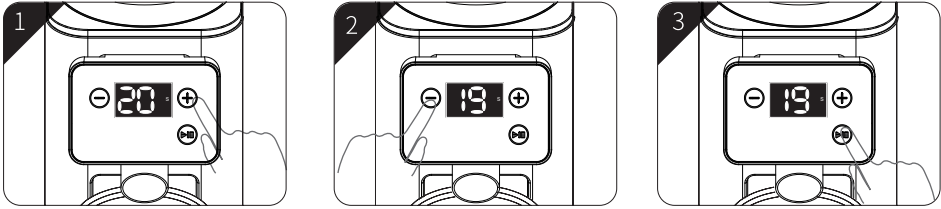
The coffee grinder has 24 grind size options. To adjust the grind size, rotate the Grind Size Dial, align the arrow ▲ on the Grind Size Dial with the number on the Bean Hopper. Adjust from fine to coarse according to the type of coffee you want. (Refer to the "Grind Size Setting Recommendations" ).

5a. Place the Stainless Steel Cup under the powder outlet.

5b. Attach the portafilter holder pad to the three screws on the base of the device by placing the holes in this holder over the screws on the base and then pushing the holder down onto the device. You can use portafilters with a diameter from 52 to 58 mm. Portafilters with a diameter of 58mm can be placed directly on the stainless steel holder. If the portafilter has a small diameter (52mm), then you must use the plastic attachment. Place the attachment directly onto the stainless steel holder.

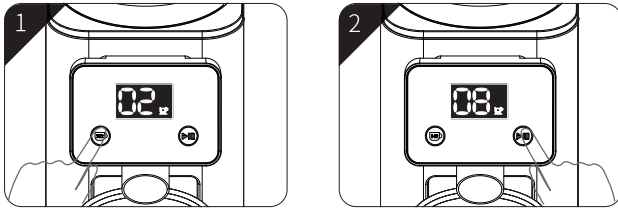
6. Plug into a power outlet.

7a. Setting grinding time (time button) After power on, the LED Panel will display for 2 cups. You can set your wanted grinding time by using the Time  $\ominus$  Button and Time  $\oplus$  Button. Each short press decreases or increases 1 second. Each long press, the time decreases or increases rapidly. The maximum setting time is 40 seconds. To start the grinding process, press  $\text{▶|■}$  button.



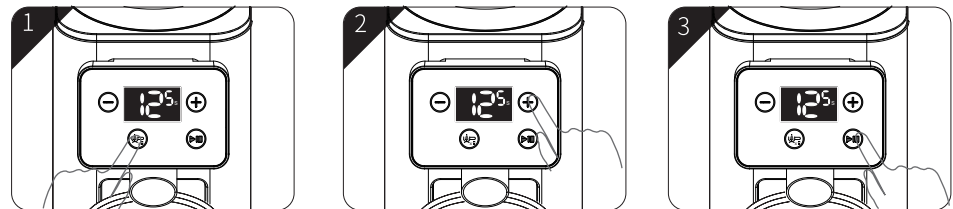
7b. Cup Button (American coffee)

After power on, the LED panel will display for 2 cups. Press  $\text{☉}$  button to set the desired number of cups. You can select 2-12 cups in 2-cup increments. To start the grinding process, press  $\text{▶|■}$  button. Recommended grinding size is 8-16.  $\mu\text{st}$  use the plastic attachment. Place the attachment directly onto the stainless steel holder.



7c. Cup Button (Single Espresso)

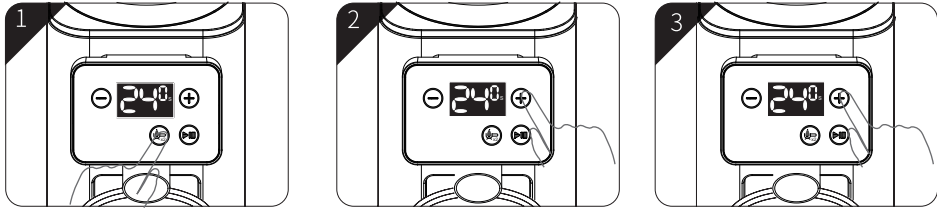
After power on, the LED panel will display for 2 cups. Press  $\text{☉}$  button to set single cup of espresso quickly, The LED panel will display 12 S,  $\oplus$  and  $\ominus$  button will be lit. To set desired seconds, you can increase or decrease 0.5S by press  $\oplus$  or  $\ominus$  button. To set seconds more quickly, press and hold  $\oplus$  or  $\ominus$  button, the range is between 0S and 20S. To start the grinding process, press  $\text{▶|■}$  button. Recommended grinding size is 0-8.



7d. Cup Button (Double Espresso)

After power on, the LED panel will display for 2 cups. Press  $\text{☉}$  button to set single cup of espresso quickly, The LED panel will display 22 S,  $\oplus$  and  $\ominus$  button will be lit. To set desired

seconds, you can increase or decrease 0.5S by press **+** or **-** button. To set seconds more quickly, press and hold **+** or **-** button, the range is between 10sand 30S. To start the grinding process, press **▶** button. Recommended grinding size is 0-8.

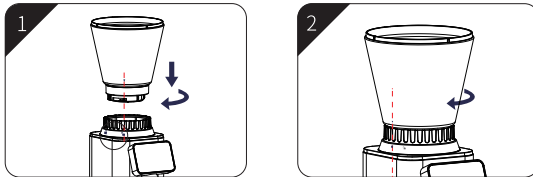


8. Press the START/STOP Button to start grinding. Grinding will automatically stop while the grinding is done. If you need to pause during grinding, press the START/STOP Button.



### CAUTION

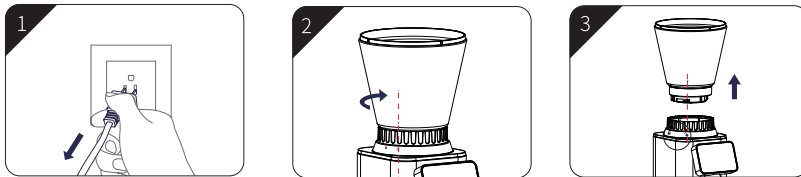
1. Do not grind continuously for more than 3 minutes, or the screen will display "E1" because the appliance overheats, and the three buttons of the machine cannot work. Please wait for 10 minutes to cool down then restart.
2. If you select coarse grinding and a long grinding time or a large number of cups, then the collection container will be too small. Place another container which is large enough under the coffee ground outlet.

## Assemble and Disassemble the Bean Hopper




### How to assemble the Bean Hopper:

1. Align the arrow ▼ on the Bean Hopper with the unlock icon  on the Ring of the Base.
2. Turn the Bean Hopper clockwise until the arrow ▼ is aligned with the lock icon  on the Ring of the Base.

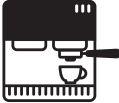




### How to disassemble the Bean Hopper:

1. Make sure the coffee grinder is unplugged.
2. Turn the Bean Hopper counter-clockwise until the arrow ▼ is aligned with the unlock icon  on the Ring of the Base.
3. Lift the Bean Hopper up.



# Grind Size Setting Recommendations

Coffee Type	Espresso	Drip/Pour Over	French Press
			
Grind Size	Fine	Medium	Coarse
Grind Setting	0- 8	8-16	16-24
Maximum Grinding Time	Single 0-20S Double 10-30S	40S	40S

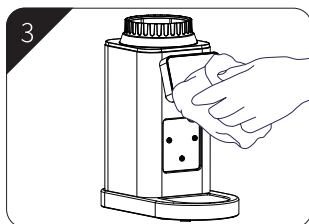
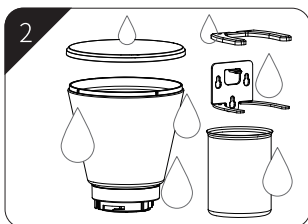
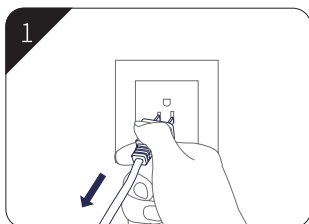
## NOTE:

- This chart is for reference only. Your experiment with different grinding size, dose, and time setting is important for you to achieve your desired taste.
- For Espresso, please set the grinding time lower than "10 seconds" to avoid waste of coffee grounds.

## Tips

- Fresh beans will yield the best flavor and aroma.
- Only fill the bean container with the quantity of coffee beans that you intend to use in the near future.
- The required grind quantity depends on the coffee quantity and preparation method. Different amounts are used for the different preparation methods.
- The actual grind size for a particular setting will vary depending on many factors, including: degree of roast (light vs. dark), freshness, humidity, type of bean, oil content, etc. With use, you will discover which setting best meets your taste, brewing style and other personal coffee-making preferences.

# Cleaning & Maintenance

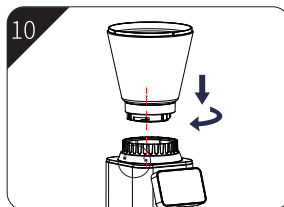
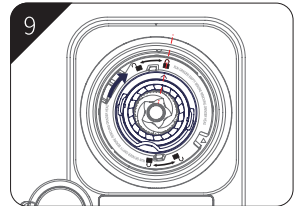
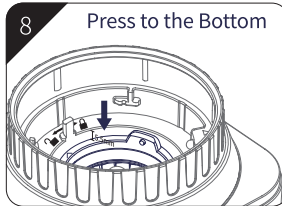
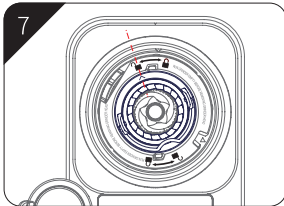
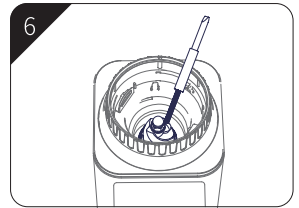
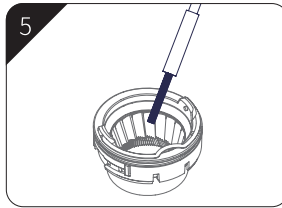
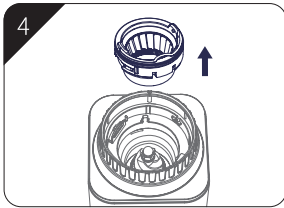
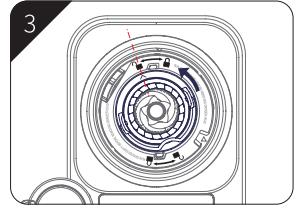
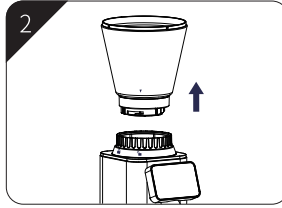
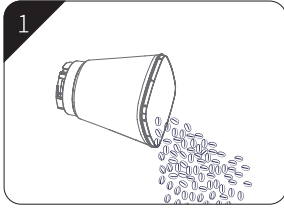


## Cleaning the Grinder

1. Unplug power cord from power outlet before cleaning.
2. Wash the Bean Hopper, Stainless Steel Cup in warm soapy water and dry thoroughly.
3. Wipe and polish exterior of appliance with a soft damp cloth and dry thoroughly.



### NOTE:





Please do not clean any grinder parts or accessories in the dishwasher.



## Cleaning Conical Burrs

Regular cleaning helps the burrs achieve consistent grinding results.

1. Empty beans from the Hopper and grind out any excess beans.
2. Remove Hopper.
3. Turn the Upper Burr counter-clockwise until the arrow  is aligned with the unlock icon .

4. Lift the Upper Burr up.
5. Clean Upper Burr with Cleaning Brush.
6. Clean Lower Burr with Cleaning Brush.
7. Align the arrow  on the Upper Burr with the unlock icon .
8. Put down and press the upper burr to the bottom.
9. Turn the Upper Burr clockwise until the arrow  is aligned with the lock icon .
10. Install the Bean Hopper.

## Troubleshooting

Problem	Possible Cause	What to Do
The grinder does not start after pressing ON/OFF Button.	Grinder is not plugged in.	Plug power cord into power outlet.
The screen display "E1" and the three buttons on the machine can't work.	Grinder has overheated.	Remove power plug from power outlet. Leave for 10 minutes to cool down before using again.
The screen display "E3".	The Bean Hopper is not installed in place.	Lock Bean Hopper into position. (refer to " <b>How to assemble the Bean Hopper</b> ")
The motor starts but no ground coffee comes from the grind outlet or Grinder stops abruptly during operation.	Grinder is blocked with foreign items.	Turn off / plug off the Coffee Grinder. Remove Bean Hopper, inspect burrs and remove any foreign body. Clean burrs and chute (refer to " <b>Cleaning Conical Burrs</b> ").

# Technical Information

- The appliance has an overload protection for the grinding mechanism, this protects against damage by foreign objects. If you hear a loud, rattling, previously unknown noise during the grinding process, press the on/off button and clean the grinding mechanism as described under "Clean & Maintenance".
- When the appliance is not in use it switches off after 15 minutes.

<b>Product Name</b>	Coffee Grinder
<b>Model</b>	CG209
<b>Rated Voltage</b>	120V
<b>Rated Frequency</b>	60Hz
<b>Rated Power</b>	150W
<b>Weight</b>	2.2KGS/4.9 LB

Manufacturer: Foshan Mycoffee Electrical Appliance Co.,Ltd  
Address: 3rd Floor, No.3 Building, No.2 Nanyi Road, Daliang, Shunde, Foshan City, Guangdong Province, China  
Contact: Emily Tel: +1 (838) 910 8317 E-Mail: info01@iamzchef.com

# VIP SERVICE

Plus up to **12** months  
Extension for excellent after-sales service

Please send your Amazon order number to our email ([info01@iamzchef.com](mailto:info01@iamzchef.com)) to register AMZCHEF super member.

## Once the email is successfully sent:

- ① You will automatically get 1 year of warranty, and upgrade to full replacement guarantee.
- ② If anything goes wrong with your product, we will provide you with a brand new unit as a replacement, or provide you with a full refund.
- ③ If there is a problem with your parts and accessories, you can replace them for free.



Send: [info01@iamzchef.com](mailto:info01@iamzchef.com)

Subject: Warranty

Amazon Order ID: \_\_\_\_\_

**Please note:** Please send us your order number within 2 weeks of receiving the goods to ensure successful registration.