

# User Guide



# Contents

About This Document

Appearance and Ports

Assembling and Disassembling the Monitor

Pivot

Connecting the Monitor to a Device (such as a computer)

Using the Five-Way Joystick to Power On/Off and Configure the Settings

Menu Options for the Monitor

FAQs

Safety information

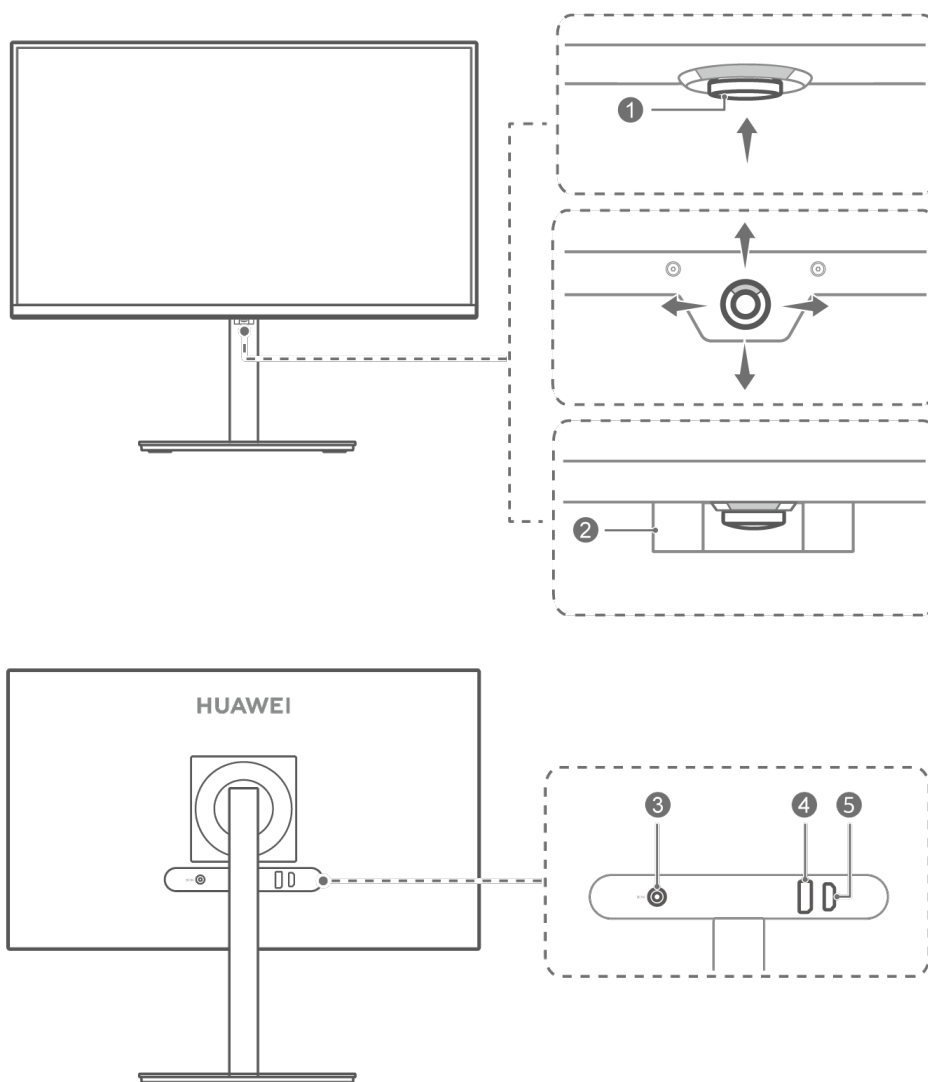
Legal Notice


# About This Document

Please read this document before you begin using the device.

Some components mentioned in the document may not be included with the device, and need to be purchased separately. Some features described in this document are only available when used together with other components. The figures and Graphical User Interfaces (GUIs) in this document may differ from reality, and all figures are for reference only.

# Appearance and Ports

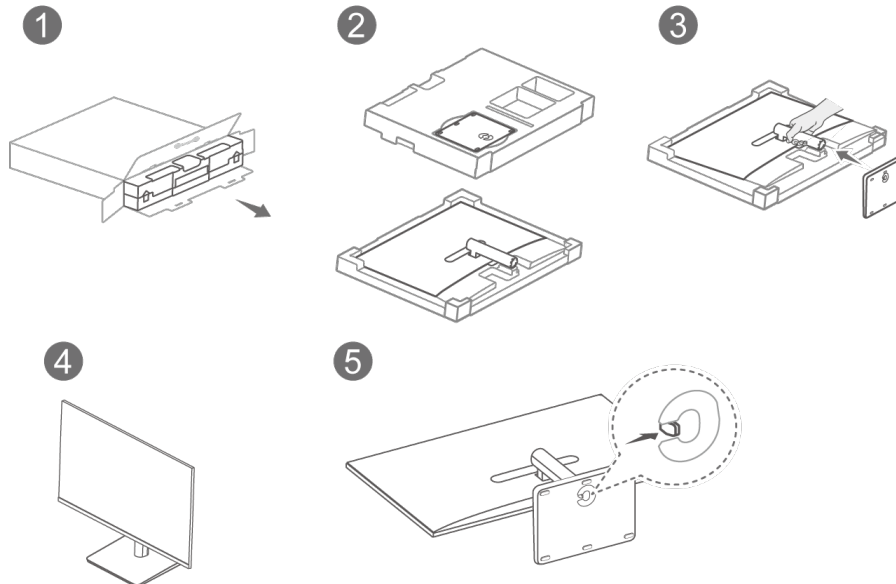


No.	Button
1	<p><b>Five-way joystick</b></p> <ul style="list-style-type: none"> <li>• Press upwards to power on the device. Press and hold for more than 2 seconds to power off the device.</li> <li>• Press upwards, forwards, backwards, leftwards, or rightwards when the device is powered on, to open the menu. Press forwards, backwards, leftwards, or rightwards to configure the settings.</li> </ul> <p>For details, please refer to <b>Using the Five-Way Joystick to Power on/off and Configure the Settings</b>.</p>
2	<p><b>Five-way joystick protective case*</b></p> <p>Protects the five-way joystick from damage during initial assembly.</p> <p> Only SSN-CBA and SSN-CBABZ are relevant to the five-way joystick protective case.</p>

No.	Button
3	<b>Power port</b> Connects to a power adapter to supply power to the monitor.
4	<b>DisplayPort (DP)</b> Connects to a device, such as a computer, via the DP.
5	<b>HDMI port</b> Connects to a device, such as a computer, via the HDMI port.

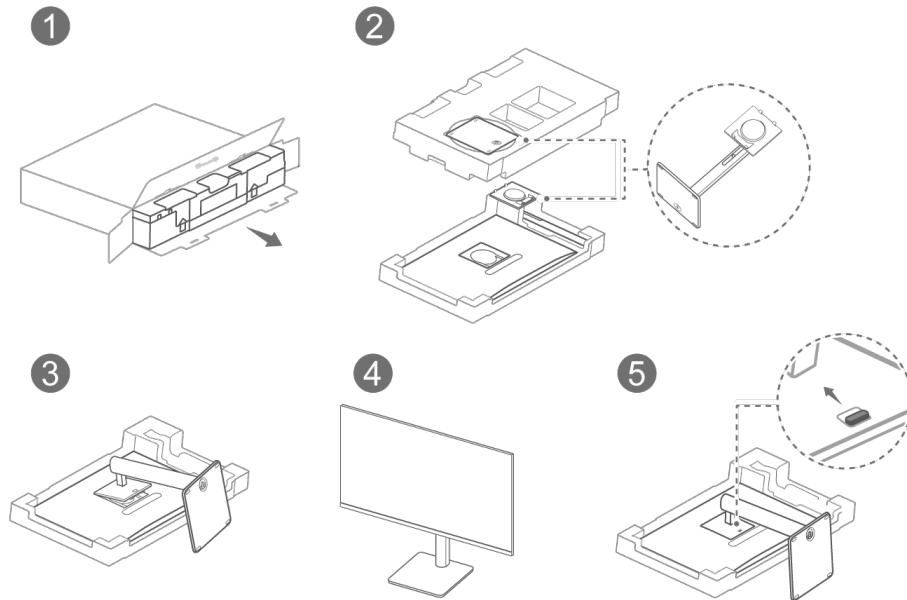
# Assembling and Disassembling the Monitor

## Configuring SSN-CAA:



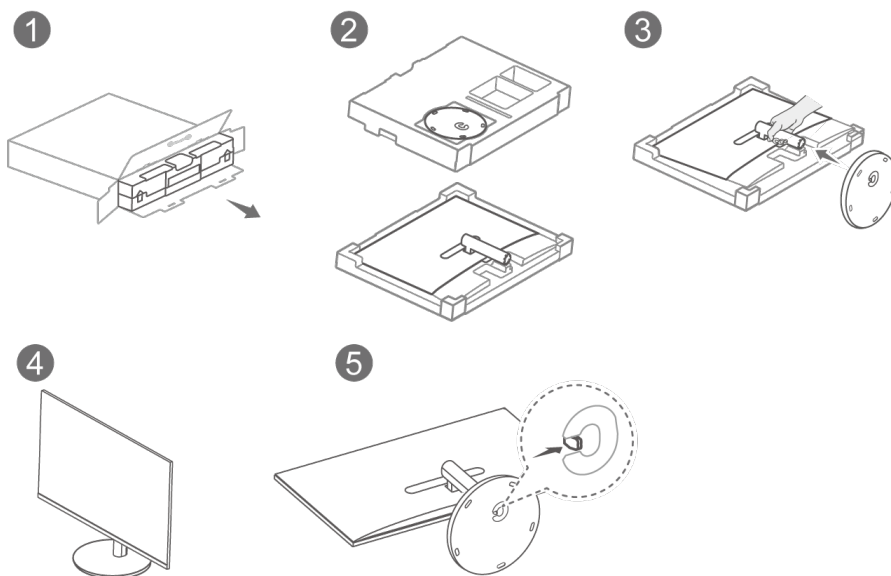
- 1** Place the carton horizontally with the foam arrow facing upwards, open the carton, and take out the device and foam.
- 2** Remove the base from the foam.
- 3** Lift the display post slightly, and attach the base to the bottom of the post. When you hear a click, it means that the base has been correctly attached.
- 4** Hold the assembled monitor with both hands, and place it on a flat desk. Feel free to adjust the tilt angle to suit your needs.
- 5** To disassemble the monitor, place it on the desk, push the quick-release tab on the base inwards with one hand, and hold the post with the other hand to push the base outwards.

## Configuring SSN-CBA:



- 1** Place the carton horizontally with the foam arrow facing upwards, open the carton, and take out the device and foam.
- 2** Remove the base support from the foam, and use screws to connect the base to the support.
- 3** Tilt the upper end of the base support so that it fits into the slot on the back of the monitor, and press the base support downwards until you hear a clicking sound, which indicates that the base support has been correctly attached.
- 4** Hold the assembled monitor with both hands, and place it on a flat desk. Feel free to adjust the tilt angle, swivel angle, and height to suit your needs.
- 5** To disassemble the monitor, place it on the desk, push the quick release button on the back of the monitor upwards, and lift the bottom of the support.

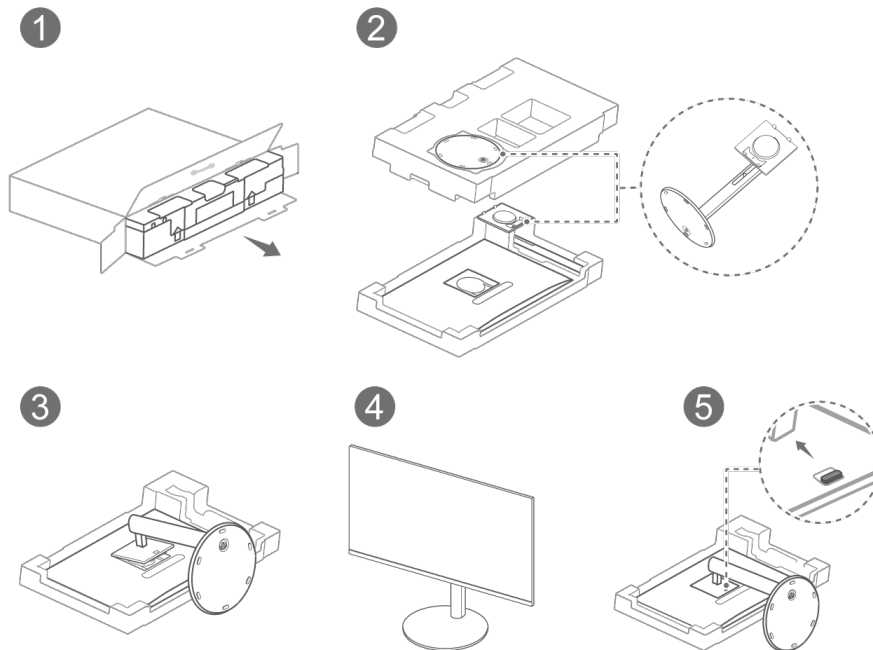
### Configuring SSN-CAABZ:



- 1** Place the carton horizontally with the foam arrow facing upwards, open the carton, and take out the device and foam.

- 2 Remove the base from the foam.
- 3 Lift the display post slightly, and attach the base to the bottom of the post. When you hear a click, it means that the base has been correctly attached.
- 4 Hold the assembled monitor with both hands, and place it on a flat desk. Feel free to adjust the tilt angle to suit your needs.
- 5 To disassemble the monitor, place it on the desk, push the quick-release tab on the base inwards with one hand, and hold the post with the other hand to push the base outwards.

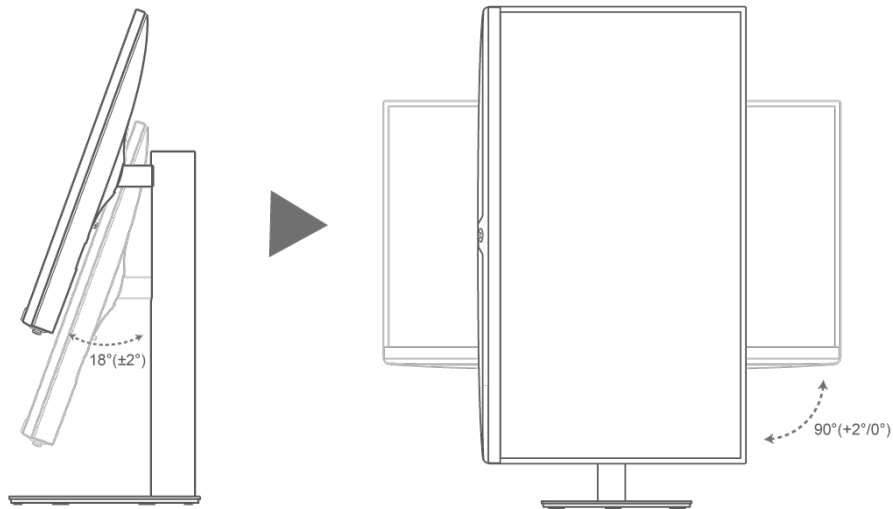
### Configuring SSN-CBABZ:



- 1 Place the carton horizontally with the foam arrow facing upwards, open the carton, and take out the device and foam.
- 2 Remove the base support from the foam, and use screws to connect the base to the support.
- 3 Tilt the upper end of the base support so that it fits into the slot on the back of the monitor, and press the base support downwards until you hear a clicking sound, which indicates that the base support has been correctly attached.
- 4 Hold the assembled monitor with both hands, and place it on a flat desk. Feel free to adjust the tilt angle, swivel angle, and height to suit your needs.
- 5 To disassemble the monitor, place it on the desk, push the quick release button on the back of the monitor upwards, and lift the bottom of the support.



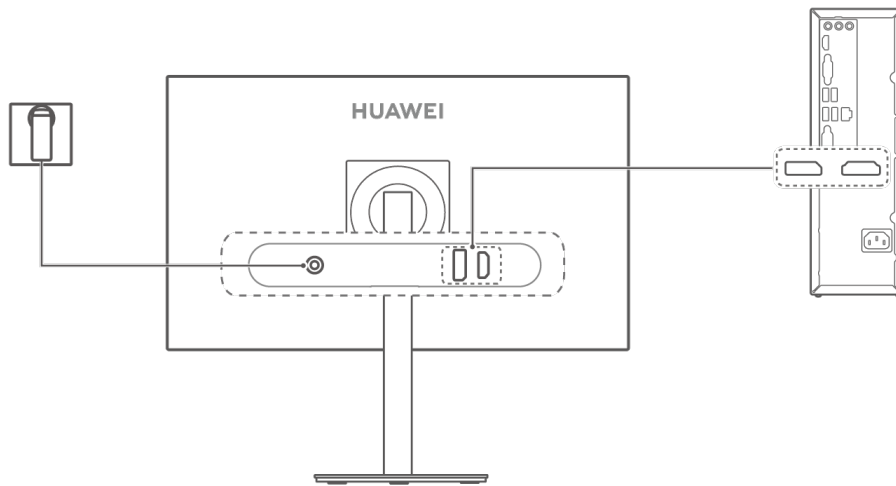
# Pivot



Erect the monitor, adjust the height and tilt angle of the screen to the maximum, face the screen, and rotate the screen 90 degrees clockwise until the screen is in portrait mode.

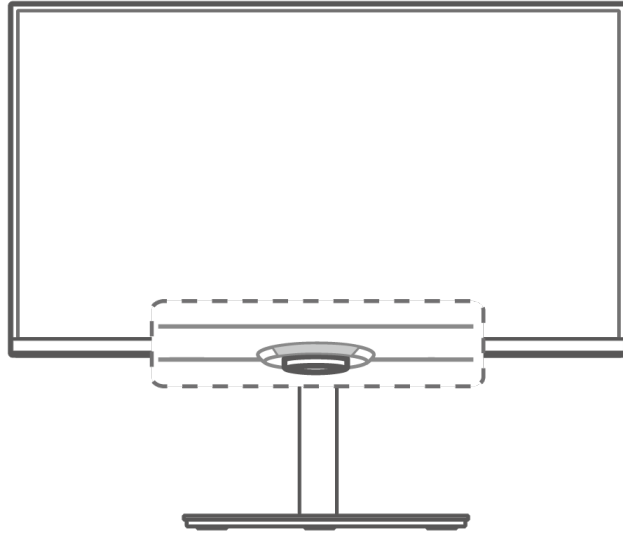
**i** This feature is only available on SSN-CBA and SSN-CBABZ.

# Connecting the Monitor to a Device (such as a computer)



- 1** Connect one end of a DP or HDMI cable to the DP or HDMI port on the monitor, and connect the other end to the DP or HDMI port on a computer.
- 2** Connect other cables, such as power cables, to the monitor and computer, and then power on both devices. If the computer screen is displayed on the monitor, it indicates that the connection is successful.

# Using the Five-Way Joystick to Power On/Off and Configure the Settings



The monitor's five-way joystick can be used to power the monitor on/off and configure the settings.

## Powering the monitor on/off

- **Powering on:** Press the joystick upwards. Once the brand logo appears on the monitor screen, the indicator will turn on and the monitor will be powered on.
  - **Information:** When the monitor is working, the indicator will be lit. When the monitor has no signal input, it will enter Standby mode. If the LED power button is set to On in standby, the indicator will flash white in Standby mode.
- **Powering off:** Press and hold the joystick upwards for more than 2 seconds. The indicator will turn off and the monitor will power off.

## Configuring the settings:

- 1 With the monitor powered on, press the five-way joystick upwards when facing the monitor, to open the menu.
- 2 On the menu screen, operate the five-way joystick as instructed when facing the monitor, to change the settings:



Press the joystick forwards, backwards, leftwards, and rightwards to switch between options.









Press leftwards to return to the upper-level menu, or exit the menu.







Press upwards or rightwards to confirm the settings.

# Menu Options for the Monitor

 Menu items may vary depending on the monitor model and version.

Level-1 Menu	Level-2 Menu	Description
 Picture mode	P3 colour	P3 colour is recommended for users who usually browse images in the P3 colour gamut, or those who prefer bright colours.
	sRGB colour	sRGB colour is recommended for when you browse images on a computer.
	HDR colour	HDR colour mode features HDR colour correction, and is recommended for when you watch videos.
	Game	Game mode is recommended for when you play games.
	eBook	eBook mode is recommended for when you read, as it provides a paper-like display.
	Custom	You can set the display effects on your own.
 Display	Brightness	The value ranges from 0 to 100.
	Contrast	The value ranges from 0 to 100.  This feature is only available in Custom, sRGB colour, and P3 colour modes, when Eye Comfort mode is disabled.
	Sharpness	The value ranges from 0 to 100.
	Eye Comfort	You can enable or disable Eye Comfort mode.  When you plan on reading for an extended period of time, Eye Comfort mode can help you avoid eye fatigue. Once it is enabled, the screen will take on a mild yellow tint. This feature is only available in Custom, sRGB colour, and P3 colour modes, and is disabled in other picture modes by default.
	Colour temp	You can set the colour temperature to Cool, Neutral, Standard, or Warm. You can also set Red, Green, and Blue to any value between 0 and 100 in Custom.  This feature is only available in Custom, sRGB colour, and P3 colour modes, when Eye Comfort mode is disabled.

Level-1 Menu	Level-2 Menu	Description
	Scaling	You can set the scaling to Full screen or Scaled.
 Input source	HDMI	You can select the corresponding input source based on the cable connecting the monitor to any other devices.
	DP	
 Game assist	Refresh rate	<p>In gaming scenarios, you can configure auxiliary settings.</p> <p>After enabling this feature, you'll be able choose to display the refresh rate in the top left or right corner of the screen.</p>
	Crosshairs	After enabling this feature, you'll be able to set the crosshair displayed on the screen as red or green, or reset its position.
	AMD FreeSync	This feature can be enabled or disabled. After enabling this feature, you can enjoy a smooth gaming experience free of screen distortion.
	Response time	This feature can be enabled or disabled. After enabling this feature, you'll be able to set the response time to Standard, Fast, or Super-fast.
 Shortcuts	Up	The upper option on the OSD shortcut menu is set to Brightness by default. You can also change it to another setting, such as Picture mode, Response time, Input source, or Contrast.
	Down	The lower option on the OSD shortcut menu is set to Picture mode by default. You can also change it to another setting, such as Brightness, Response time, Input source, or Contrast.
 Settings	Language	You can set the menu language to simplified Chinese, American English, Japanese, or another language.
	Menu settings	<b>Menu transparency:</b> You can set the menu transparency to any value between 1 and 8. A larger value indicates a higher transparency.
		<b>Menu timeout:</b> You can set how long the menu will display to any value between 10 seconds and 100 seconds.

Level-1 Menu	Level-2 Menu	Description
	LED power button	<b>On in standby:</b> Once this feature is enabled, the indicator on the monitor will flash white in Standby mode.
		<b>Off in standby:</b> Once this feature is enabled, the indicator on the monitor will turn off in Standby mode.
	About	Allows you to view the monitor's SN, firmware version, picture mode, resolution, refresh rate, and input source.
	Eco mode	This mode can be enabled or disabled. This feature is disabled by default. Enabling this feature will reduce power consumption. After enabling Eco mode, you won't be able to apply certain settings, such as Brightness.
	Factory reset	Restores the menu to its factory settings.

# FAQs

## **Unable to power on the display**

- Check whether the display is powered on.
- Check whether the power adapter is correctly connected to the display and the power supply.

## **There are no images on the display**

- Check whether all of the cables are correctly connected.
- Check whether the display and the tower are powered on.
- Check whether the DP or HDMI signal cable is damaged.
- If the preceding issues do not occur, restart the display and the tower, then check whether the images can be properly displayed on the screen.

## **The screen is too dark or too bright**

- Open the settings menu on the display and adjust the screen brightness and contrast.

## **The screen colour is abnormal**

- Check whether the DP or HDMI signal cable is damaged. For example, the pins may be bent.
- Open the settings menu on the display and adjust the colour temperature.



# Safety information

This section contains important information about how to use your device safely and how it operates. Read this information carefully before using your device.

## **Electronic device**

Do not use your device if its use is prohibited or if it may cause danger or interference with other electronic devices.

## **Interference with medical equipment**

- Adhere to any rules or regulations set forth by hospitals and health care facilities.
- Some wireless devices may affect the performance of hearing aids or pacemakers. For more information, contact your service provider.
- Pacemaker manufacturers recommend maintaining a minimum distance of 15 cm between a pacemaker and a wireless device to prevent potential interference with the pacemaker. If using a pacemaker, hold the device on the side opposite the pacemaker and do not carry the device in your front pocket.
- Please consult your doctor and the device manufacturer to determine if using your device may interfere with the operation of your medical device.

## **Areas with flammables and explosives**

- Do not use the device in environments where flammables or explosives are stored, such as a petrol station, because the electronics in the device may trigger an explosion or fire. Always adhere to any warning signs or information that may be present in these environments.
- Do not store or transport the device in containers with flammable liquids, gases, or explosives.

## **Operating environment**

- Avoid environments in which there is dust, damp, dirt, or magnetic fields. Using the device in these environments may cause it to malfunction.
- Before connecting and disconnecting cables, stop using the device and disconnect it from the power supply. Ensure that your hands are dry during operation.
- During thunderstorms, switch your device off and remove all cables connected to it to protect against lightning strikes.
- Do not use your device during thunderstorms to protect your device against any danger caused by lightning.
- Ideal operating temperatures are 0°C to 35°C. Ideal storage temperatures are -10°C to +45°C. Extreme heat or cold may damage your device or accessories.
- To protect your device or accessories from fire or electrical shock hazards, avoid rain and moisture.

- Keep the device away from sources of heat and fire, such as a heater, microwave oven, stove, water heater, radiator, or candle.
- If the device overheats, close any opened applications or stop using it until it cools down. If skin is exposed to an overheated device for an extended period, low-temperature burn symptoms, such as red spots or darker pigmentation, may occur.
- Do not allow children or pets to bite or suck the device or accessories. Doing so may result in damage or explosion.
- Adhere to local laws and regulations, and respect the privacy and legal rights of others.
- Do not place any object, such as a candle or a water container, on the device. If any foreign object or liquid enters the device, immediately stop using it, power it off, and remove all cables connected to it. Then, contact a Huawei authorised service centre.
- Place this device in a place where it can be kept stable at all times. Otherwise, the device may fall over and may cause serious personal injury or death.



**Stability risk:** The device may fall over, causing serious personal injury or death. Many injuries, especially to children, can be avoided by taking simple precautions such as:

- Always using the cabinet or bracket recommended by the manufacturer.
- Always using furniture that can safely support the device and always ensuring that the device does not protrude from the edges of its supporting furniture.
- Never putting this device in an unstable position and never putting this device on high furniture (such as a cabinet or bookcase).
- Ensuring that the wires and cables connected to the device are properly routed so that they will not trip anyone, be pulled, or grabbed.
- Not placing cloth or other materials between the device and its supporting furniture.
- Ensuring that your children are aware of the dangers of climbing furniture carrying this device or its control assembly.
- Not placing anything that may encourage children to climb on the top of the device or on the furniture carrying the device.
- Following the same safety precautions if you need to move the existing devices to different positions.

### **Child's safety**

- Keep the device and its accessories away from children and take all necessary precautions to ensure their safety. The device includes detachable parts that may present a choking hazard.
- The device and its accessories are not intended for use by children. Children should use the device only under direct adult supervision.

### **Accessories**

- Using an unapproved or incompatible power adapter, charger, or battery may cause a fire, explosion, or other hazards.

- Use only approved accessories. The use of unapproved accessories may void the warranty, may violate local regulations and laws, and may be dangerous. For information about the availability of approved accessories in your area, contact your retailer.

### **Power adapter safety**

- The power plug is intended to serve as a disconnect device.
- For pluggable devices, the socket-outlet shall be installed near the devices and shall be easily accessible.
- Unplug the power adapter from electrical outlets and the device when not in use.
- If the power cable is damaged (for example, the cord is exposed or broken), or the plug loosens, stop using it at once. Continued use may lead to electric shocks, short circuits, or fire.
- Do not touch the power cord with wet hands or pull the power cord to disconnect the power adapter.
- Do not touch the device or the power adapter with wet hands. Doing so may lead to short circuits, malfunctions, or electric shocks.
- Ensure that the power adapter meets the requirements of Clause 2.5 in IEC60950-1/EN60950-1/UL60950-1 and has been tested and approved according to national or local standards.

### **Cleaning and maintenance**

- Keep the device and accessories dry. Do not attempt to dry it with an external heat source, such as a microwave oven or hair dryer.
- Do not expose your device or accessories to extreme heat or cold, which may interfere with proper function and may lead to fire or explosion.
- Avoid collision, which may lead to device malfunctions, overheating, fire, or explosion.
- Before you clean or maintain the device, stop using it, close all applications, and disconnect all cables connected to it.
- Do not use chemical detergents, powders, or other agents (such as alcohol or benzene) to clean the device or accessories. These substances may cause damage to parts or present a fire hazard. Use a clean, soft, and dry cloth to clean the device and accessories.
- Do not dismantle or remanufacture the device and its accessories. This voids the warranty and releases the manufacturer from liability for damage. In case of damage, contact a Huawei authorised service centre for assistance or repair.
- If the device screen is broken in a collision, immediately stop using the device. Do not touch or attempt to remove the broken parts. Promptly contact a Huawei authorised service centre.

### **Disposal and recycling information**



The symbol on the product, battery, literature, or packaging means that the products and batteries should be taken to separate waste collection points designated by local authorities at the end of the lifespan. This will ensure that EEE waste is recycled and treated in a manner that conserves valuable materials and protects human health and the environment.

For more information, please contact your local authorities, retailer, or household waste disposal service or visit the website <https://consumer.huawei.com/en/>.

**Reduction of hazardous substances**

This device and its electrical accessories comply with local applicable rules on the restriction of the use of certain hazardous substances in electrical and electronic equipment, such as EU REACH regulation, RoHS and Batteries (where included) directive. For declarations of conformity about REACH and RoHS, please visit the website

<https://consumer.huawei.com/certification>.

# Legal Notice

**Copyright © Huawei 2022. All rights reserved.**

The product described in this document may include software that is the copyright of Huawei or its licensors. Such software shall not be reproduced, distributed, modified, decompiled, disassembled, decrypted, extracted, reverse engineered, leased, assigned, or sublicensed unless such restrictions are prohibited by law or such actions are approved by the copyright holder.

## **Trademarks and Permissions**

The terms HDMI and HDMI High-Definition Multimedia Interface, and the HDMI Logo are trademarks or registered trademarks of HDMI Licensing Administrator, Inc. in the United States and other countries.

Other trademarks, products, services and company names mentioned herein may be the property of their respective owners.

## **Open Source Software Notice**

For details about the Open Source Software Notice, please visit

<https://consumer.huawei.com/en/support/content/en-us15892133/>.

## **Notice**

Some features of the product and its accessories described herein rely on the software installed or the capacities and settings of the local network, and therefore may not be activated or may be limited by local network operators or network service providers.

Therefore, the descriptions herein may not exactly match the purchased product or its accessories.

Huawei reserves the right to change or modify any information or specifications contained in this document at any time without prior notice and without any liability.

## **DISCLAIMER**

ALL CONTENTS OF THIS DOCUMENT ARE PROVIDED "AS IS". EXCEPT AS REQUIRED BY APPLICABLE LAWS, NO WARRANTIES OF ANY KIND, EITHER EXPRESS OR IMPLIED, INCLUDING BUT NOT LIMITED TO, THE IMPLIED WARRANTIES OF MERCHANTABILITY AND FITNESS FOR A PARTICULAR PURPOSE, ARE MADE IN RELATION TO THE ACCURACY, RELIABILITY OR CONTENTS OF THIS DOCUMENT.

TO THE MAXIMUM EXTENT PERMITTED BY APPLICABLE LAW, UNDER NO CIRCUMSTANCES SHALL HUAWEI BE LIABLE FOR ANY SPECIAL, INCIDENTAL, INDIRECT, OR CONSEQUENTIAL DAMAGES, OR LOSS OF PROFITS, BUSINESS, REVENUE, DATA, GOODWILL SAVINGS OR ANTICIPATED SAVINGS REGARDLESS OF WHETHER SUCH LOSSES ARE FORSEEABLE OR NOT.

THE MAXIMUM LIABILITY (THIS LIMITATION SHALL NOT APPLY TO LIABILITY FOR PERSONAL INJURY TO THE EXTENT APPLICABLE LAW PROHIBITS SUCH A LIMITATION) OF HUAWEI ARISING FROM THE USE OF THE PRODUCT DESCRIBED IN THIS DOCUMENT SHALL BE LIMITED TO THE AMOUNT PAID BY CUSTOMERS FOR THE PURCHASE OF THIS PRODUCT.

**Import and Export Regulations**

All applicable export or import laws and regulations must be complied with and all necessary governmental permits and licenses must be obtained before exporting or importing the product, including the software and technical data, described in this document.

**Privacy Policy**

To better understand how we protect your personal information, please see our privacy policy at <https://consumer.huawei.com/privacy-policy>.

**For More Help**

Visit <https://consumer.huawei.com/en/support> for the most up-to-date contact information for your country or region.

ALL PICTURES AND ILLUSTRATIONS IN THIS GUIDE, INCLUDING BUT NOT LIMITED TO THE DEVICE COLOUR, SIZE, AND DISPLAY CONTENT, ARE FOR YOUR REFERENCE ONLY. THE ACTUAL DEVICE MAY VARY. NOTHING IN THIS GUIDE CONSTITUTES A WARRANTY OF ANY KIND, EXPRESS OR IMPLIED.