

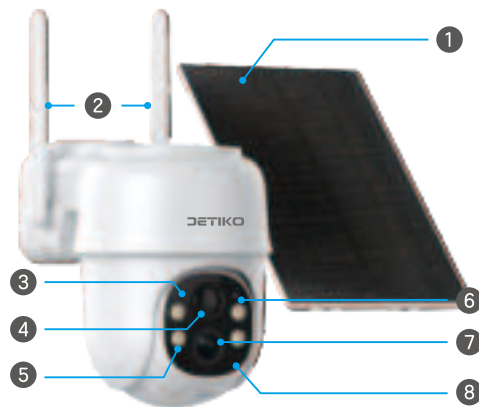
DETIKO



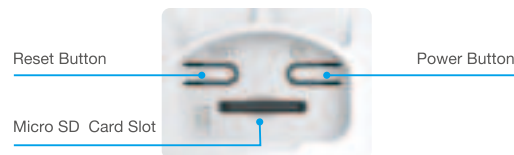
3MP Wireless Security Camera with Solar Panel

Quick Installation Guide
Model:QJ01-A1

Product Description



1	Solar panel	5	White light/infrared light
2	Antenna	6	Photoresistance
3	Indicator light	7	Lens
4	PIR sensor	8	Microphone



Indicator lights status

Light Status	Device status
Red light on	Power on
Red and Blue light alternately flashing	Waiting for connection
Blue light flashing	Wi-Fi connecting
Blue light solid	Wi-Fi connected
Red light quickly flashing	1.Reset camera to factory setting 2.Camera is upgrading firmware

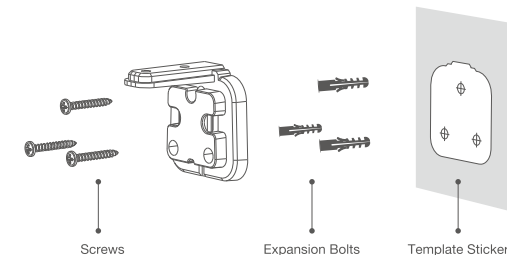
NOTE: The device is hibernating, and the indicator light turns off. To check if the device is powered on, click the reset button to see if the indicator light is on.

Button Controls

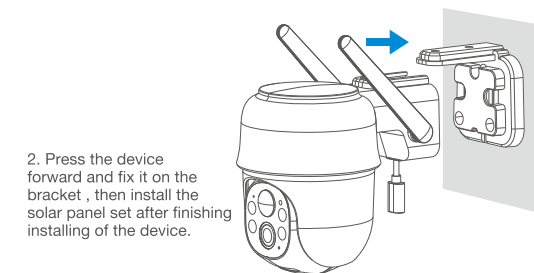
Button	Function	Operation Manual
RST	Enter into the network configuration status	After the camera starts, it will default to the network configuration state. If the network configuration is not completed in about 180 seconds, you must click the RST button again.
	Reset	Press RST button for about 6 seconds , the camera will restart with red light flash quickly after hearing voice of "DIDI" .
Power Switch	Switch ON	Press the power button for around 4 seconds to turn on the device, and start-up music will play.
	Switch OFF	Press the power button for around 4 seconds to turn off the device.

Equipment installation

- The wall should be with enough thickness to bear at least three times weight of the device.



- Take out the bracket and accessories, Choose a proper installation location, and make holes according to the positioning sticker. Install the rubber plug and tighten the screws to firm the bracket .



- Press the device forward and fix it on the bracket , then install the solar panel set after finishing installing of the device.

* Solar panel Please choose a proper location without any shadows and have sufficient sunlight. After installation , you can use the device after inserting the Type-C plug into the device Type-C interface.