

SMART LED LIGHTS

MODELS:

SL200-SL -	200 LED String Lights
SL400-SL -	400 LED String Lights
SL200-ICL -	200 LED Icicle Lights
SL210-CUR -	210 LED Curtain Lights
SL10-FST -	10 BULB LED Festoon Lights

Instructions for the use of these lights - **IMPORTANT PLEASE READ**

USAGE

- This light set is suitable for indoor and covered outdoor use. However, please ensure the transformer is plugged into the indoor mains supply only or weatherproof outdoor socket.

SAFETY INFORMATION

- Remove light set from packaging before connecting to power supply.
- Do not attempt to modify the transformer, wiring or controller in any way.
- Ensure that all of the cable is uncoiled whilst set is in use. Failure to do so may cause over-heating and subsequent malfunction.
- Avoid damage to wire insulation (cable), as this could cause a short circuit and damage the transformer and/or controller.
- Disconnect from mains supply when not in use.
- Before using or reusing the set, inspect it carefully for damage. Do not use any light set which has cut, damaged or frayed wiring, cracks in any of the lamp holders, loose connections or exposed wires.
- Should the light set, transformer or controller become damaged, do not attempt to repair them; consult an authorized electrician.
- We do not consider the light set suitable for use in locations where unsupervised children under the age of 3 years are present, as there may be a risk of choking on small parts or entanglement.
- Ensure the light set is not positioned where they can be inadvertently damaged by doors or windows, moving objects, people or animals.

DOWNLOAD ONESMART HOME APP

- Open the APP Store or Google Play on your mobile phone.
- Open 'Search' and enter 'onesmart home'.
- Click 'GET' and begin to download and install.

Open the app when this has downloaded.



Pairing the Light set to onsmart Home App

CREATE AN ACCOUNT

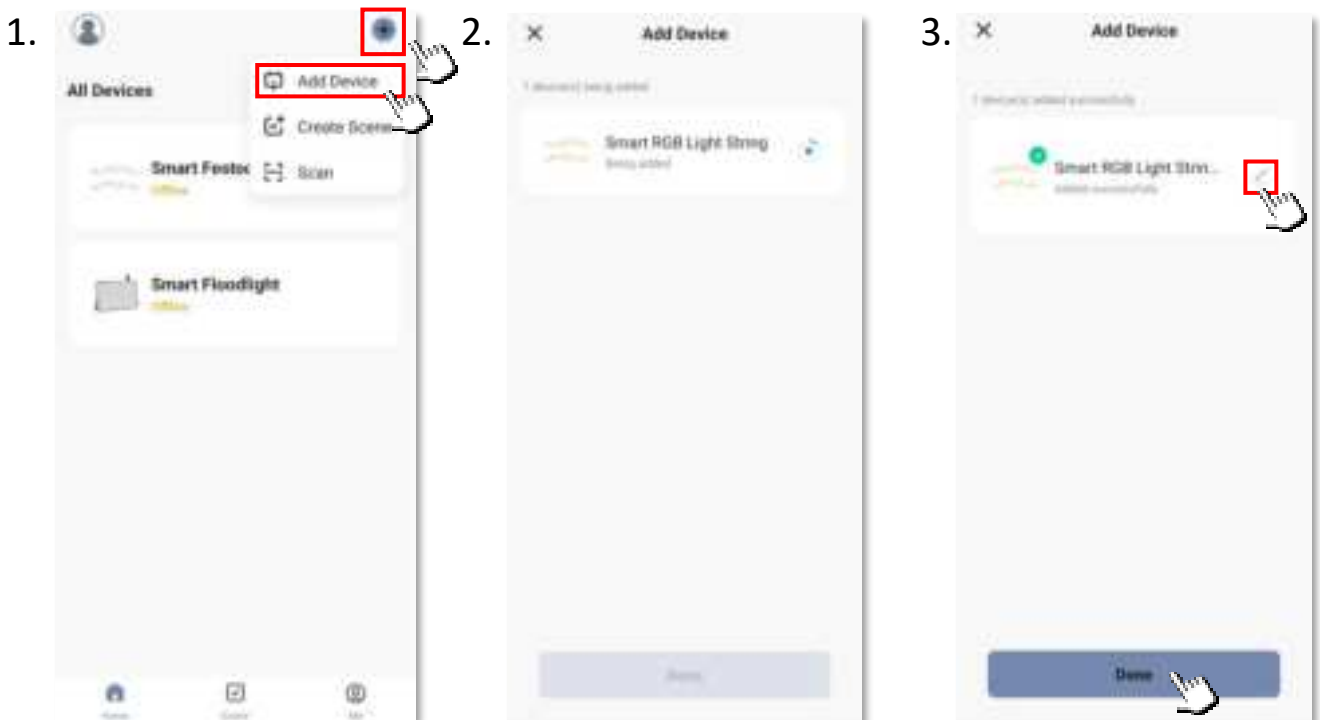
- Tap REGISTER near the bottom of the screen.
- Read and agree to the Privacy Policy.
- Add your email address.
- Tap 'Obtain verification code'. Enter the verification code from your email.
- Create a password. **Note:** Please keep your account and password in mind for Alexa or Google Assistant App pairing.
- Tap confirm.
- Your APP is now registered and ready for pairing to your device.

PAIRING THE LIGHT TO THE ONSMART HOME APP

- Before starting pairing to your phone, make sure you have Bluetooth and Wi-Fi turned on and you have your Wi-Fi password ready.
- Plug light set into socket. Lights will be red.
- Press the button on the adaptor for +-10 seconds. When the button is released, it will flash green and light set will also turn green.

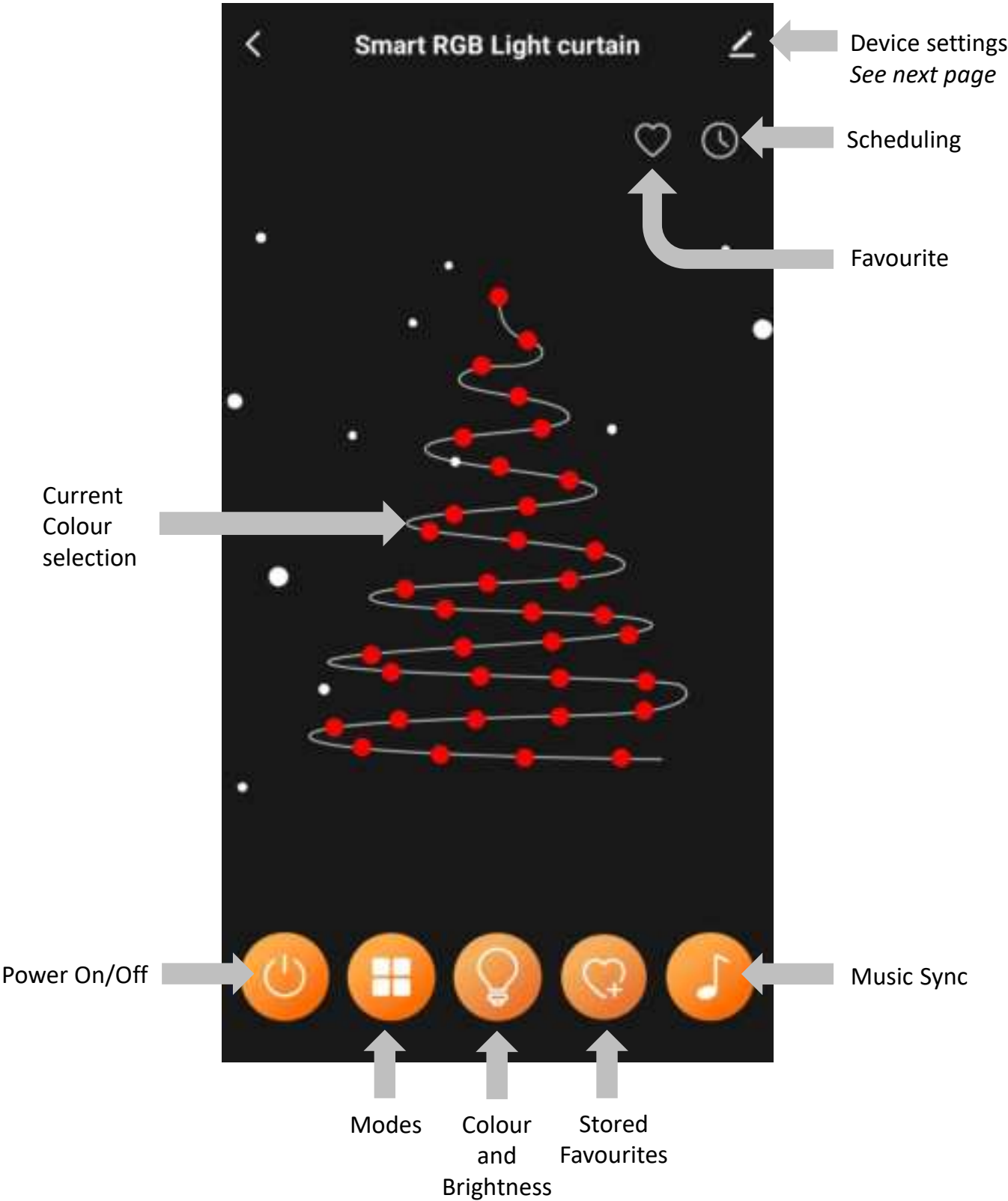
Add the light to onsmart home app

1. In the onsmart home app go to the '+' button at the top right corner and select 'Add device'. Choose your Wi-Fi network and enter your password.
2. Once device is discovered click add. This might take some time to download.
3. Once downloaded you can edit the device name using the pencil icon. Click done when finished. This will then open your device controller.



Operating your Device from the APP

Device main operation screen



Device Settings



Smart RGB Light curtain



Change the name, location & image of your device

Device Information



View your device information

Tap-to-Run and Automation



View your tap-to-run and Automation

Third-party Control



Alexa



Google Assistant

View compatible Voice Control devices & instructions on setting up.

Device Offline Notification

Offline Notification



Turn on notifications for when device goes Offline.

Others

Share device with family (see instructions on next page)

Share Device



Create Group



Create group of devices (see instructions on next page)

Read FAQs & submit feedback

FAQ & Feedback



Add to Home Screen



Add device shortcut to home screen

Review device network

Check Device Network

Check Now



Device Update

No updates available



View device updates & turn on automatic updates

Remove device from app

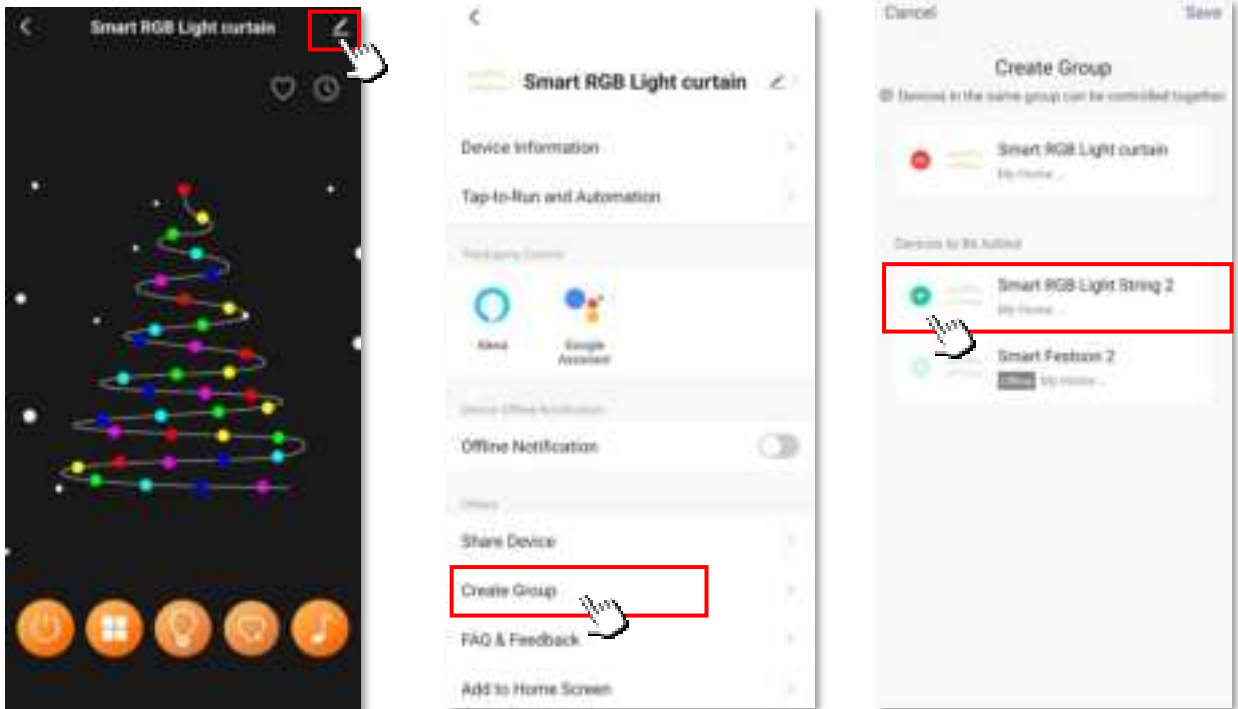


Remove Device

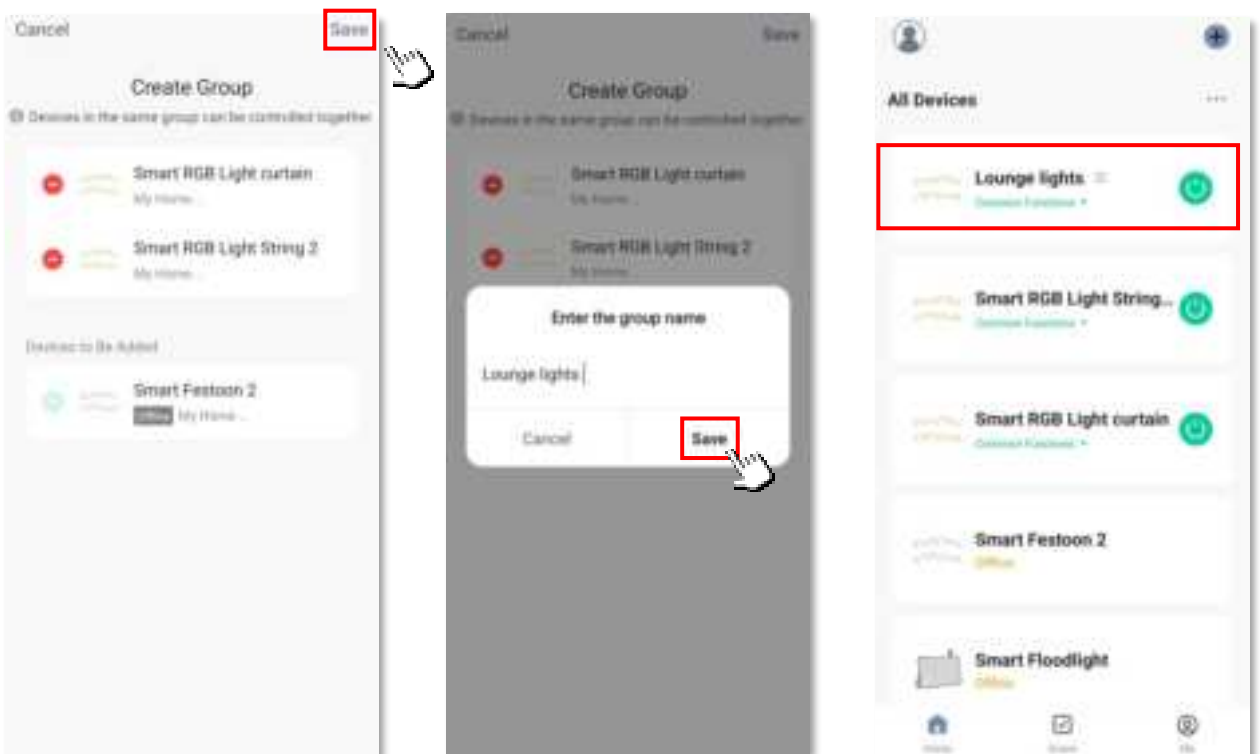
Grouping Light

HOW TO GROUP THE LIGHTS

- Make sure all the lights have been paired to the onesmart home app.
- Choose any light on the app, click the edit button on the top right corner, then click Create Group.
- Choose the lights you want to group from the device list.



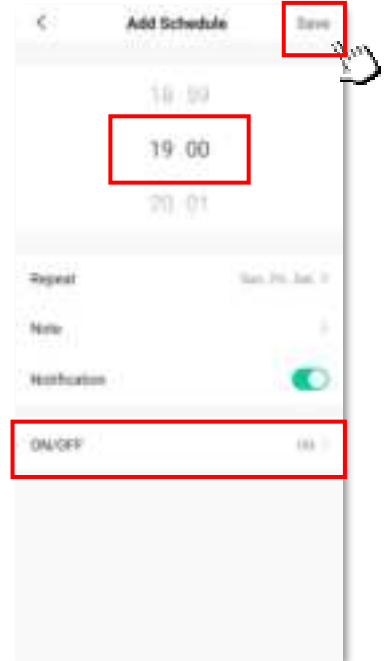
- When all items have been selected click Save.
- Rename the group for example Lounge Lights and click Save.
- This group can now be controlled together.



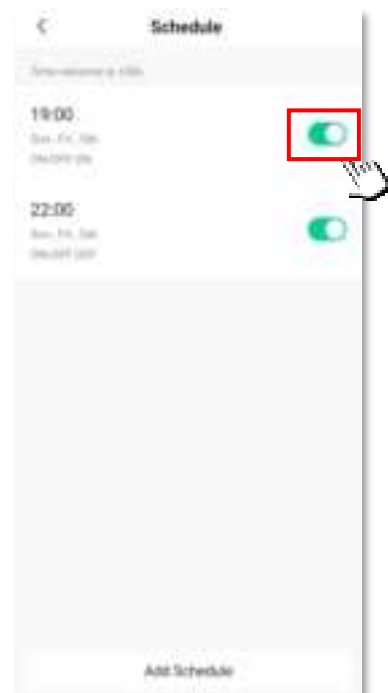
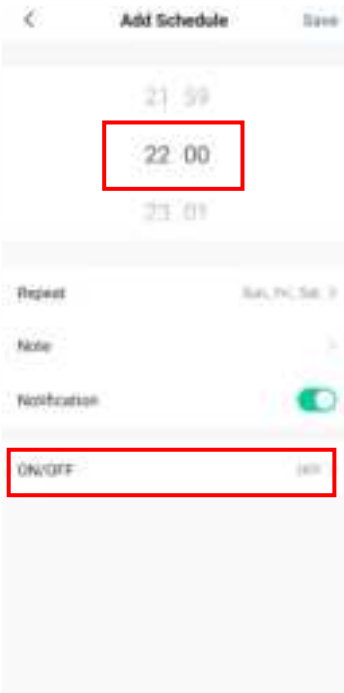
Scheduling

HOW TO SET SCHEDULES

- Select the Clock Icon on the main control screen.
- Click Add to add a new Schedule.
- Select the time you would like the light to go on and select ON in the ON/OFF area.
- Select the Repeat button if you would like this to repeat more than once and
- Select the notification slider if you would like to receive a notification of the light turning on. Click Save when done. **Note:** this is not available if you are scheduling a group of lights.






- **Note:** Once you have selected the days to be repeated click the back button to get out of this screen.
- Repeat the previous instruction to select the time you would like the light set to go off . Note if you don't add this step, you will have to manually turn the light off.
- Select the slider to easily turn on and off any schedules. To delete a schedule, hold down your finger on the schedule until the delete button pops up.





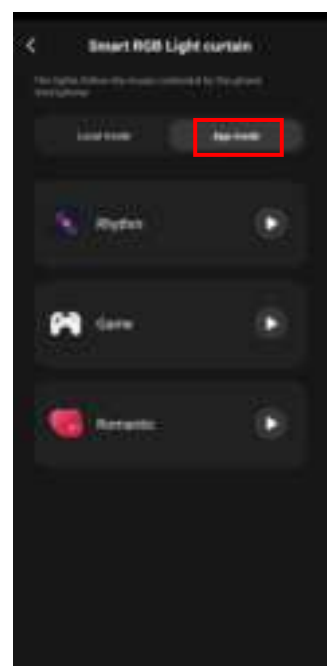
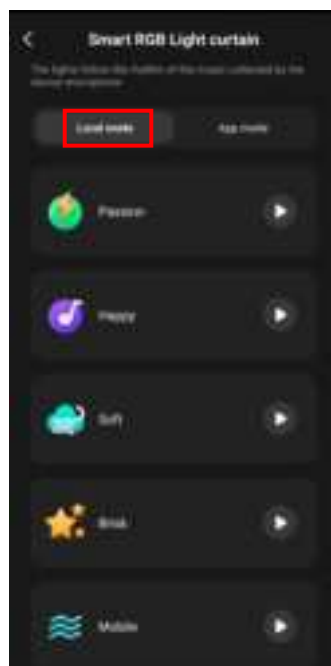
Controls

SELECTING DIFFERENT MODES

- Select the Power Icon  to turn the light On and Off.
- To access different light modes and colours select the  icon.
- To select a static colour select the  icon. You can also control the brightness in this screen.



- Select the heart in the top right corner to select the current setting as a favourite. To access all your favourite setting select the  icon.
- To sync your light to music or voice, select the  icon.
- Using Local mode you can select from a range of different effects. The adaptor of the light set will pick up sounds in the room including music and voices.
- Use the App mode to pick up music from your phone.



Control with Google Assistant

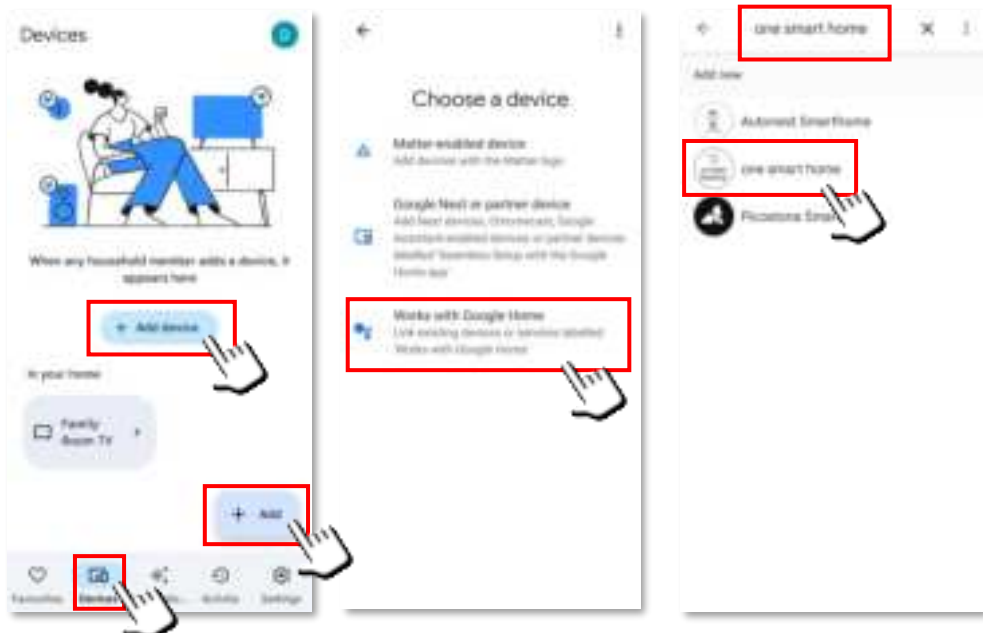
HOW TO CONTROL WITH GOOGLE ASSISTANT

- First you will need to add the 'one smart home' app to your 'Google Home' account.

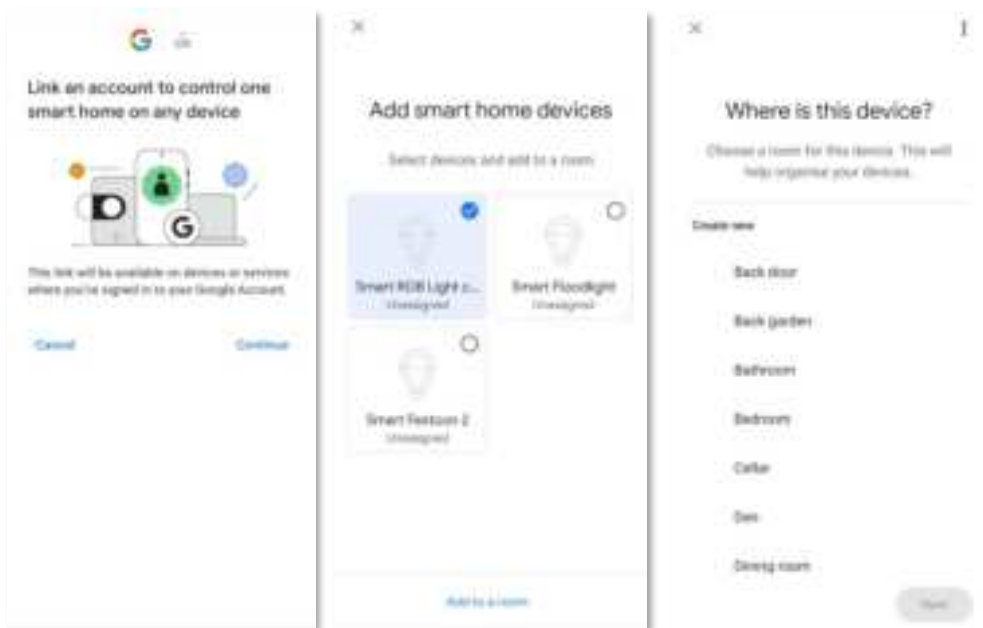


1. Login to the Google Home App, click on Devices at the bottom of the screen and then on '+ Add Device' or '+ Add'.

1. Select 'Works with Google Home'
2. In the search bar type 'one smart home' and select.



4. You will then need to link your google account to one smart home.
 5. Select the device you want to link. (You can add multiple devices here).
 6. Then select the room where this device will be located.
- Exit out of Google home.



- You can now control the light on Google Assistant App by using the below voice commands:

"OK Google, turn on the <device name>."

"OK Google, turn off the <device name>."

"OK Google, set the <device name> mode to colour/white/scene/music."

"OK Google, set the <device name> brightness to (10%, 25%, 50%, 75% and 100%). "

"OK Google, set the <device name> colour to (Red, orange, yellow, green, blue, purple or pink). "

"OK Google, turn off the <device name> after two minutes."

"OK Google, at 13:40 turn on <device name>."

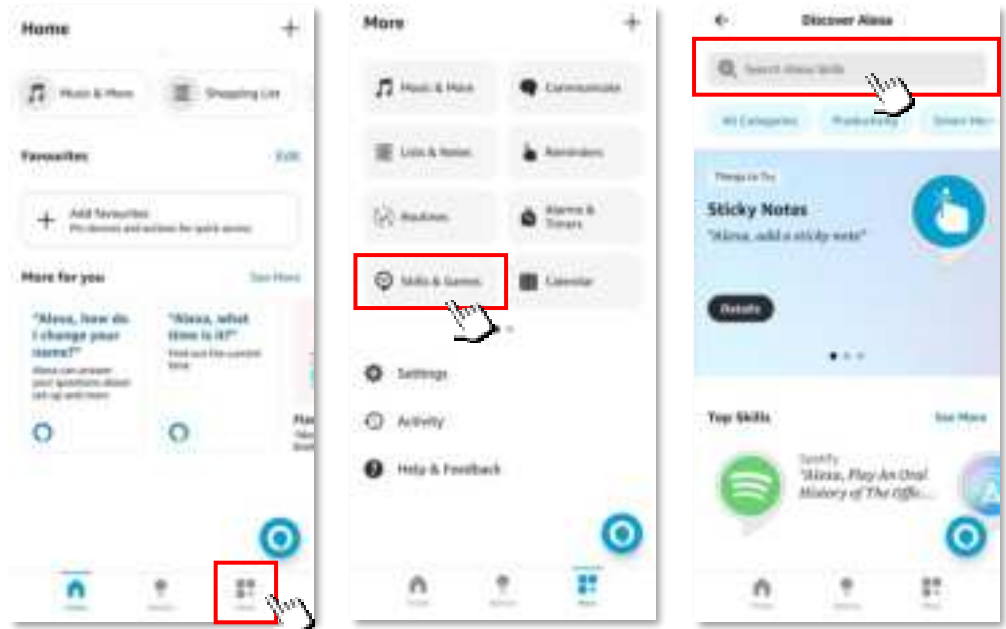
**** Device name is the one given to the light when this was setup. In this example we used 'Smart RGB Light Curtain', it is advisable however to use a much shorter name like 'Light Curtain'.**

Control with Amazon Alexa

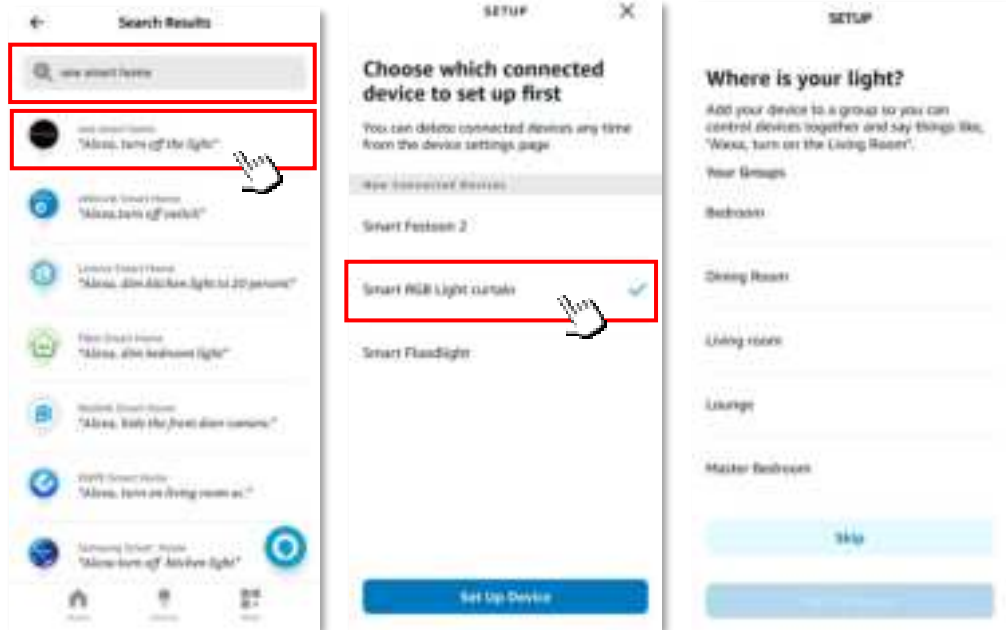
HOW TO CONTROL WITH AMAZON ALEXA

- Make sure that your Alexa app is connected to Echo, and both work well under your Wi-Fi network.

1. Login to your Alexa APP, tap the bottom right corner Icon for 'More'.
2. Select Skills & Games.
3. This will take you to the discover Alexa page. Enter one smart-home into the search bar.



4. Enter one smart home in the search bar and select. Enable one smart home and follow steps for setup.
5. Select the device you would like to setup. In this example we used Smart RGB Light curtain.
6. Then select the room where this device will be located.



- You can now control the device using your Echo by giving the below commands:

"Alexa, turn on the <device name>."

"Alexa, turn off the <device name>."

"Alexa, set the <device name> mode to colour/white/scene."

"Alexa, set the <device name> brightness to (10%, 25%, 50%, 75% and 100%)."

"Alexa, change the <device name> to the colour blue."

"Alexa, set the <device name> colour to (Red, orange, yellow, green, blue, purple or pink)."

"Alexa, at 13:40 turn on <device name>."

"Alexa, turn off the <device name> after two minutes."

** Device name is the one given to the light when this was setup. In this example we used 'Smart RGB Light Curtain', it is advisable however to use a much shorter name like 'Light Curtain'.

CARE AND CLEANING

To clean wipe exterior with a damp cloth.

Do not immerse in water.

PROOF OF PURCHASE

Please retain your purchase receipt for all warranty claims.

WARRANTY

Your product is warranted against faults and manufacture when used in normal domestic use for a period of one year.

We undertake to replace this product at no charge if found to be defective due to a manufacturing fault during the warranty period. This warranty excludes damage caused by misuse, neglect, shipping accident, incorrect installation, or work carried out by anyone other than a qualified electrical service technician.

If your product fails to operate satisfactorily, please return it to the retailer from whom it was purchased to obtain a replacement product. You will need to produce satisfactory evidence of date of purchase. If the product is to be replaced (cannot be repaired) then that replacement will be of the same or similar product or accessory excluding packaging, instruction card etc.

In New Zealand product is covered by the Consumers Guarantee Act (1993). In accordance with the act consumers are advised that: The manufacturer does not undertake that repair facilities and parts are necessarily available for this product.

KEEP IN A SAFE PLACE FOR FUTURE REFERENCE

CDB GROUP

New Zealand

PO Box 100-707

N.S.M.C

Auckland

Phone +64 (0)9 917 4000

Phone 0800 232 633

info@cdb.co.nz

Australia

PO Box 574

South Morang

Victoria, 3752

Phone +61 (0)3 9336 4423

Phone 1300 465 324

info@cdbgoldair.com.au