



Philips
Cord holder

Fits standard ironing boards



GC013/00

Keeps the cord out of the way

For comfortable and fast ironing

The Philips CordGuide keeps the cord securely fitted to your ironing board so you can iron comfortably and fast. Forget about tripping on the cord, the CordGuide fits any standard ironing board to keep your cord in place.

Easy to use

- Easily fits all standard ironing boards
- Designed for steam iron appliances

Keeps the cord out of the way

- Fixes the cord to prevent creasing already ironed parts
- Prevents tangling of the cord while ironing
- Prevents ironing or tripping over the cord

PHILIPS

Specifications

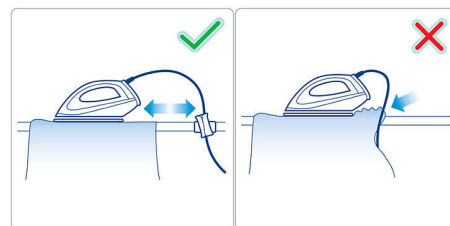
Size and weight

- Packaging dimensions (W x H x D): 35 x 28 x 24 cm

- Product dimensions (W x H x D): 10 x 5 x 4.4 cm
- Total weight with packaging: 0.065 kg

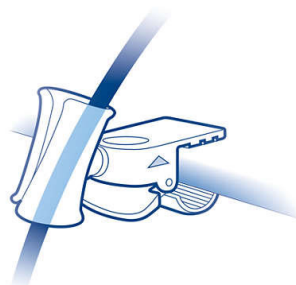
Highlights

No accidental creasing



CordGuide fixes the cord in one place on the ironing board, so that it will not accidentally drag and crease already ironed parts of the garment.

No tangling

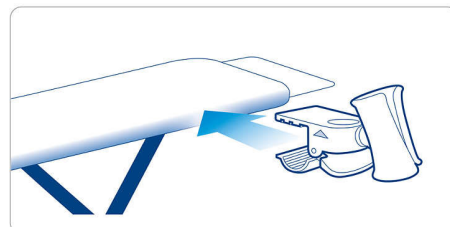


The cord will not tangle while you are ironing.

No tripping over the cord

It prevents you from tripping over the cord, protecting it from being damaged and so you don't accidentally iron over it.

Fits on all ironing boards



CordGuide is easy to use. Just clip it on your ironing board and slot the cord of your iron inside. CordGuide fits on all standard ironing boards.

Designed for steam irons

The CordGuide is compatible with standard steam iron appliances.

