



KENT SUPER STAR
FOR MOUNTING ON WALL

KENT
Mineral RO™
Water Purifiers
HOUSE of PURITY

Instructions Handbook



System Tested and Certified
by WQA to NSF/ANSI 58 for
the reduction of TDS



System Tested and Certified
by WQA to NSF/ANSI 58 for
the reduction of TDS



PATENT NO. 199716



Mineral RO™ TECHNOLOGY

Removes Dissolved Impurities
Retains Essential Minerals
Multiple Purification

RO + UV + UF + TDS Control

Kent Deta Hai
**Sabse
Shudh Paani**



Marketed by:
KENT RO SYSTEMS LTD.
E-6, 7 & 8, Sector-59, Noida, U.P.-201 309, India.
E-mail: sales@kent.co.in | Website: www.kent.co.in

Manufactured by:
KENT RO SYSTEMS LTD.
1. Khasra No. 93, Village-Bantakhedi, Tehsil-Roorkee, ☐
District-Haridwar, Uttarakhand-247 668, India.
2. A-6, Sector-87, Noida-201305, U.P., India. ☐

For customer complaints, contact our Customer Care Officer at:
E-6, 7 & 8, Sector-59, Noida, U.P.-201 309, India. Call: 92-789-12345
E-mail: service@kent.co.in or visit us at www.kent.co.in

Reverse Osmosis Water Purifier with UV Sterilization & TDS Controller
Mineral RO™ © 2005 KENT RO SYSTEMS LTD, the process & purifier is patented vide patent no. 199716.

KENT Super Star design is registered vide registration no. 219309.



Welcome to KENT

Dear Customer,

At the outset, allow us to thank you for your trust in **KENT** water purifier. We take pride in our reputation for product quality and industry proven performance. We are certain that your decision to own **KENT Super Star Mineral RO™ Water Purifier** will go a long way towards keeping you and your family in good health. We are confident that you will be satisfied with its performance and that it will serve your need for safer and cleaner drinking water without any compromise.

This guide will help you in getting the best out of your water purifier. Please go through this booklet to familiarise yourself with its operation and maintenance.

You can look forward to years of trouble free service. In case you need an further information,contact your nearest KENT dealer/branch.

Best Wishes,

KENT RO SYSTEMS LTD.

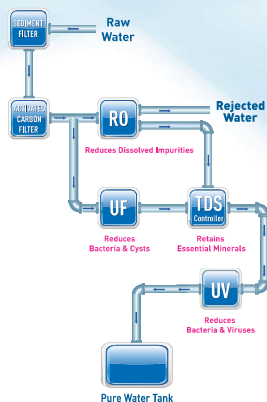
Table of Contents

1. KENT TECHNOLOGY - A Breakthrough in Water Purification	1
2. Salient Features	1
3. Items in the Box	1
4. Important Instructions	2
5. Reverse Osmosis Process	3
6. UV Process	3
7. Water Flow Diagram	4
8. Electrical Circuit Diagram	4
9. UV Fail Alarm	5
10. Filter Change Alarm	5
11. Computer Controlled Operation	5
12. Automatic Operation	5
13. Installation Instructions	6
14. TDS Adjustment	7
15. Starting-up the Purifier	7
16. Recommended Uses of Rejected Water	7
17. Maintenance	7
18. Important Safety Instructions	8
19. Warning	8
20. Technical Specifications	9
21. Testing Information	9
22. Performance Data Sheet	10

KENT TECHNOLOGY - A Breakthrough in Water Purification*

Presenting **KENT Super Star Mineral RO™ Water Purifier**; it uses futuristic and state-of-the-art technology to provide purer and healthier drinking water.

At the heart of **KENT Super Star Mineral RO™ Water Purifier** is a Reverse Osmosis membrane with capillaries as small as 0.0001 microns that reduce even dissolved impurities (salts and heavy metals) and even converts hard water to sweet and purer drinking water. The **KENT Super Star Mineral RO™ Water Purifier** also allows the user to control the Total Dissolved Solids (TDS) level of purified water.



Salient Features of KENT Super Star Mineral RO™ Water Purifier

- Double treatment by RO + UV* processes
- Inbuilt TDS Controller that allows adjustment of TDS level of purified water
- Suitable for purification of Brackish/ Tap Water/ Municipal Corporation Water Supply
- Wall mounted design; best suited for Indian homes and offices
- 8L storage tank with water level indicator
- Fully automatic operation, with auto-on and auto-off function
- Computer controlled operations for enhanced purity and long life
- Filter Change Alarm* to indicate filter replacement time
- UV Fail Alarm* to indicate failure in UV system
- RO Membrane fused inside membrane housing to prevent tampering
- Vertically mounted SMPS for protection from water
- Use of push-fit fittings for leakage and maintenance free performance
- An eye appealing design
- ABS construction for corrosion free use

Items in the Box

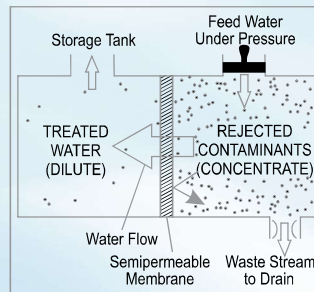
1. KENT Super Star Mineral RO™ Water Purifier	:	01 N
2. 3-Way Connector	:	01 N
3. S.S. Ball Valve	:	01 N
4. Food Grade Pip 0.952 Cm (White)	:	2.5 m
5. Food Grade Pipe 0.635 Cm (Blue)	:	2.5 m
6. Screws & Plastic Insert	:	02 N each
7. Warranty Card	:	01 N
8. Sticker Center Drill	:	01 N

Important Instructions

<p>Avoid exposure to direct sunlight and installation in damp areas.</p>	<p>Make sure that the temperature of the water entering the purifier is within 10° C - 40° C.</p>
<p>Reject Water Drain</p> <p>Make sure that the reject water pipe is not placed at a level higher than the system, otherwise the rejected water may flow backwards into the purifier.</p>	<p>10 M Water Source Water in</p> <p>Maximum distance between the water source and the purifier should not be more than 3 meters.</p>
<p>Avoid sharp bends in the pipe fittings. Do not bend or block the reject water pipe.</p>	<p>Do not confine the purifier in a cabinet.</p>
<p>In case of not using the purifier for more than two days, kindly switch off the power supply and drain the storage tank.</p>	<p>To keep the storage tank clean, it should be drained once in 15 days.</p>
<p>Use Genuine KENT Spares for optimum performance.</p>	<p>Do not try to service the purifier on your own. Instead, call a service technician for help.</p>

Reverse Osmosis Process

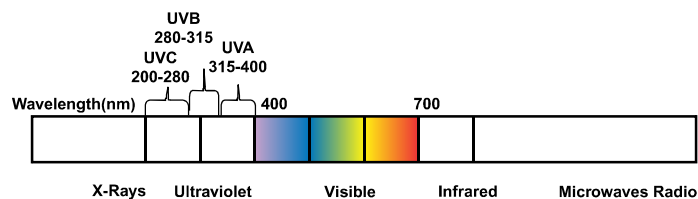
The Reverse Osmosis process, also known as hyper filtration, is the finest filtration process known till date. The process ensures reduction of particles as small as ions from a solution. Reverse Osmosis uses a semi-permeable membrane to reduce salts from potable/brackish water. In Reverse Osmosis, water pressure applied to the concentrated side forces the process of osmosis into reverse. Under enough pressure, treated water is "squeezed" through the membrane from the concentrated side to the diluted side. Salts dissolved in water as charged ions are repelled by the RO membrane. The rejected impurities on the concentrated side of the membrane are washed away in a stream of waste water and thus do not get accumulated, as in a traditional filter.



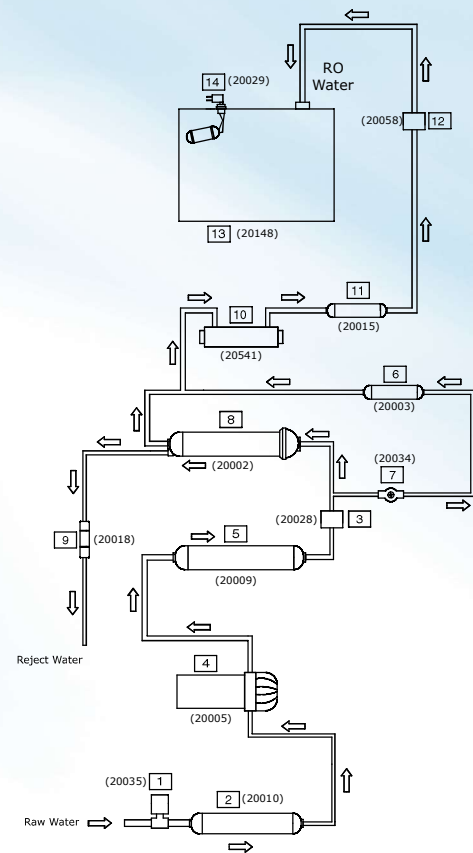
UV Process

The UV light has shorter wavelength (higher energy) than the visible light. It is called ultra-violet because it is just beyond violet light in the light spectrum. Technically, the ultra-violet light is defined to be any wavelength of light, which is shorter than 400 nanometer.

UV rays, which penetrate into the micro-organisms, are absorbed by the DNA of the pathogen in the water. The DNA is altered in such a way that the pathogen cannot reproduce itself. Thus, it is essentially killed and cannot cause infection. This process of DNA modification is called inactivation.

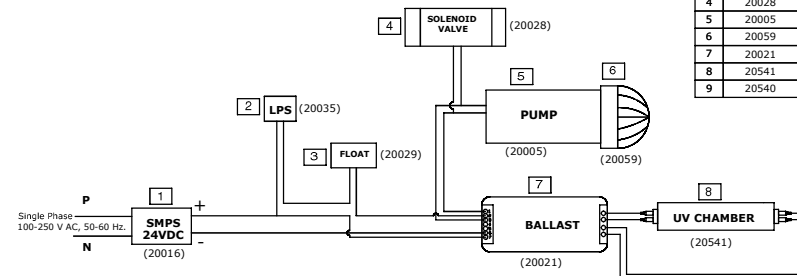


Water Flow Diagram



S.NO.	SPARE PART CODE	ITEM DESCRIPTION
1	20035	LOW PRESSURE SWITCH
2	20010	SEDIMENT FILTER
3	20028	SOLENOID VALVE
4	20005	BOOSTER PUMP
5	20009	ACTIVATED CARBON FILTER
6	20003	UF FILTER
7	20034	TDS CONTROL VALVE
8	20002	RO MEMBRANE
9	20018	FLOW RESTRICTOR TUBE
10	20541	UV CHAMBER
11	20015	POST CARBON FILTER
12	20058	NON RETURN VALVE
13	20148	WATER STORAGE TANK
14	20029	FLOAT MICRO SWITCH

Electrical Circuit Diagram



S.NO.	SPARE PART CODE	ITEM DESCRIPTION
1	20016	SMPS
2	20035	LOW PRESSURE SWITCH (LPS)
3	20029	FLOAT MICRO SWITCH
4	20028	SOLENOID VALVE
5	20005	BOOSTER PUMP
6	20059	PUMP HEAD
7	20021	BALLAST (CHOKE)
8	20541	UV CHAMBER
9	20540	UV LAMP

UV Fail Alarm*

KENT Super Star Mineral RO™ Water Purifier has an in-built feature that sounds an audible alarm if the UV lamp malfunctions. This feature is provided to ensure purity. This UV Fail Alarm will sound as following:

One short beep after every two seconds.

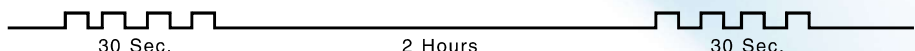


In case such an alarm is audible, kindly switch off the purifier and call the service technician for help. The purifier will stop its purification process in such a circumstance.

Filter Change Alarm*

KENT Super Star Mineral RO™ Water Purifier has an in-built feature that sounds an audible alarm to indicate replacement time for filters. This alarm will be audible after 700 hrs of use since the last filter change (or since the time of installation). The Filter Change Alarm will sound as following:

4 short beeps after every two seconds for 30 seconds. The alarm will repeat after every 2 hours of use.



In case such an alarm is audible, please call the service technician and request him to change the filters of the purifier. However, if the filters are not changed within the next 60 hours of operation, the purifier will stop functioning to ensure purity and hygiene. The following alarm will be audible after 60 Hrs. A continuous beep for an infinite time.



In case, such an alarm is audible, kindly switch off the purifier and call the service technician to replace the filters. In such a circumstance, the purifier will not function unless the filters are changed.

Computer Controlled Operation*

To ensure delivery of purer and healthier water, a micro-processor is installed in the purifier that performs the following functions:

UV Stabilisation Delay: To ensure that the UV lamp is pre-heated and is working at its optimum level before it starts disinfecting water, the controller provides a two seconds delay to UV lamp when the purifier is switched on. During this period, only the UV lamp is switched on and other electrical devices of the purifier are switched off.

Purification Delay: To ensure that the idle water lying in the internal pipes and in the UV chamber is disinfected before being passed into the storage tank, the system provides 5 second delay when the purifier is switched on. During this time, the UV lamp kills all micro-organisms that may be in the water inside UV chamber. After this delay, all other electrical devices, such as the booster pump and solenoid valve are switched on to start normal purification process.

Audible Alarm: The controller also controls the timing of UV Fail Alarm and the Filter Change Alarm.

Automatic Operation

- The purifier automatically shuts off when the storage tank is full
- The purifier automatically restarts when water level drops below the maximum
- The purifier does not start when inlet water supply pressure falls below 0.3 kg/cm²
- The purifier does not allow any water rejection in absence of electricity / when tank is full

Installation Instructions

The **KENT Super Star Mineral RO™ Water Purifier** is a product of advanced technology which ensures safe and clean drinking water. The purifier is easy and convenient to install.

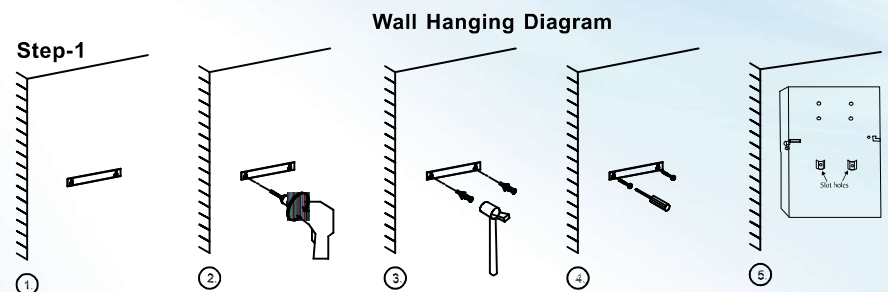
Recommended Site Preparations :

- Single Phase Single Phase 100-250 V AC, 50-60 Hz. connection not more than 3m away from the point of installation of purifier
- Raw water supply with ½ inch nipple not more than 3m away
- Drain for rejected water not more than 3m away
- Space as per dimensions of the purifier
- Wall/plane surface for mounting two screws and holding the machine
- The system and installation must comply with state and local laws and regulations

Specific Instructions :

- **KENT Super Star Mineral RO™ Water Purifier** is a wall mountable purifier. Make sure that it is only mounted on a wall. Avoid installation on wooden and metallic stands
- For optimum performance and minimum inlet pressure required, ensure that the raw water supply tank is at least 10 ft above the level at which the purifier is installed
- It is preferable to install the purifier near a sink so that inlet and reject water lines are easily available

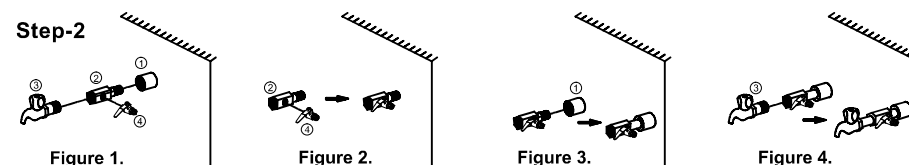
Installation Procedure:



1. Paste the central drill sticker on wall at (3.6 Feet to 4.0 Feet from the ground) as per your convenience.
2. Ensure that the sticker is pasted straight on the wall, then drill holes as per the space provided on sticker.
3. Now, insert the puff up with the help of a hammer.
4. Screw in two 10X50 self-taping screws, 5.4 inches (138 mm) apart horizontally.
5. Carefully hang the purifier on the wall with the help of the wall-mounting slot holes provided on the back side of the purifier.

Note:

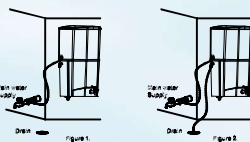
1. If the wall is not straight or the screws are not properly drilled in an even position, it will damage your purifier.
2. Keep the device away from heat or direct sunlight.



1. First fix the SS ball valve (marked as no.4) to the 1/4 inch port of the 3-way connector (marked as no.2) as shown in figure 2.
2. Connect the 3-way connector to the raw water supply (marked as no. 1) as shown in the figure 3. The 3-way connector is fitted in line with the raw water supply.
3. The other end of the 3-way connector can be connected to a tap (marked as no.3) as shown in figure 4. or can be plugged off if not required.

Step-3

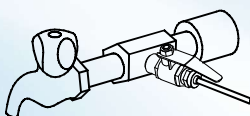
1. Now connect one end of the white pipe to SS ball valve and another end to the upper push-fit elbow fitting to the left hand side of the purifier labelled as WATER IN, as shown in fig 1.
2. Similarly, connect one end of the white pipe to the lower elbow fitting connector in tank labelled as REJECT WATER and leave the other end in the drain, as shown in fig 2.



Step-4

Before connecting the power supply, it is important that you perform the following functions:

1. Open the SS ball valve (handle parallel to the ball valve) to start the flow of water into the purifier, as shown in the figure.
2. Wait for 2-3 minutes to ensure that the filters are soaked in water.



Step-5

1. Connect the power supply.
2. Installation is complete.

TDS Adjustment*

A unique feature in **KENT Super Star Mineral RO™ Water Purifier** is the TDS control valve, which is not available in any other domestic water purifier till date. This feature allows the user to control the content of natural minerals (TDS) in purified water.

To increase the TDS level, the user can turn the screw

of the valve anticlockwise; it will result in more mineral content in treated water. To reduce the TDS level, user can turn the screw valve clockwise, it will result in less mineral content in treated water. We recommend the TDS of the purifier to be kept at lowest but not below 50 mg/l.

Starting-up the Purifier

- Switch on the power supply
- Wait till the storage tank fully fills up**
- Switch off the power supply
- Drain the storage tank by opening the drain plug present at the bottom of the storage tank so as to remove any dust particles present in the pipes and storage tank
- Close the drain plug & switch on the power supply.
- The purifier is ready to use

Recommended Uses of Rejected Water

This rejected water usually goes down the drain but if required, can be used for gardening purposes. It has high concentration of salts and minerals which

accelerate plant growth. Rejected water can also be used for cleaning purposes, i.e. utensils cleaning, mopping, etc.

Maintenance

To ensure that the purifier operates at its optimum level, routine maintenance must be performed. The frequency of the maintenance will greatly depend upon the raw water quality and consumption of treated water.

- The storage tank must be drained once in 2 weeks. To do so, switch off the power supply, open the drain plug at the bottom of the tank & allow the water to drain. Then screw back the plug and switch on the power supply
- Replace sediment, activated carbon & post

carbon when the filter change alarm is audible OR after every 12 months. It is recommended to change the FRT when the filters are replaced

- Replace the RO membrane once in a year
- Replace the UV Lamp once in a year
- If you are not going to use the purifier for a long time (in case you are on a holiday, tour or out of home), make sure that you disconnect the power supply, turn off the raw water supply and drain the storage tank

The reverse osmosis system contains a replaceable treatment component critical for the effective reduction of total dissolved solids and that product water shall be tested periodically to verify that the system is performing properly.

Replacement of spare parts are as under:-

-20010	SP	Inline Sediment Filter 8"
-20009	SP	Inline Carbon Filter 8"
-20002	SP	RO Membrane Welded 8" Housing
-20015	SP	Post Carbon Filter (Blue)
-20003	SP	Hollow Fibre Membrane (RO)
-20018	SP	FRT 550

Note: Filters and membrane are consumables. Their replacement time is dependent on the quality of raw water and water consumption. They are not covered under the warranty. However, if a filter chokes within six months and a membrane within a year, it will be cleaned/repared/replaced free of cost. Changing the filters and system inspection is available on call. The treatment capacity of the RO membrane will reduce with time due to clogging of pores of membranes.

"This reverse osmosis system contains a replaceable component critical to the efficiency of the system. Replacement of the reverse osmosis component should be with one of identical specifications as defined by the manufacturer, to ensure the same efficiency and contaminant reduction performance."

Important Safety Instructions

- If the supply cord is damaged, it must be replaced by manufacturer, its service agent or similarly qualified persons in order to avoid a hazard.
- Children should be supervised to ensure that they do not play with the appliance.
- This appliance is not intended for use by persons (including children) with reduced physical, sensory or mental capabilities, or lack of experience and knowledge, unless they have been given supervision or instruction concerning use of the appliance by a person responsible for their safety.

Warning

- Do not operate the UV-C emitter when it is removed from the appliance enclosure.
- Read the maintenance instructions before opening the appliance.
- The appliance must be disconnected from the supply before replacing the UV-C emitter.

** Tested or certified flushing time - 24hrs.

* Tested & Certified by TUV-SUD South Asia (P) Ltd.

Technical Specifications

PRODUCT	KENT SUPER STAR
Product Code	11011
Product Generic Name	Water Purifier
Product Colour	White
Applications	Suitable for Purification of Brackish/Tap Water/ Municipal Corporation Water.
Purification Production Rate	15 L/hr.*
Body Material	ABS Food Grade Plastic
Mounting	Wall-mounting
Dimensions (mm)	380 (L) x 270 (W) x 505 (H)
Inlet Water Pressure/Temp (Min.)	0.3 kg/cm ² /10°C
Inlet Water Pressure/Temp (Max.)	4 kg/cm ² /40°C
Min./Max. Operating pH	6.5-8.0
Filter Cartridge	Sediment, Activated Carbon, UF and Post Carbon.
UV Lamp Wattage	11 W
Life of UV Lamp	5000 hrs. of operation
Net Weight	8.34 kg
Storage Capacity	8 L
Maximum Duty Cycle	75 L/day
Membrane Type	Thin Film Composite RO
Booster Pump Voltage	24 V DC
Total Power Consumption	60 W
Input Power Supply	Single Phase 100-250 V AC, 50-60 Hz. 
IP Rating	IPX1

*Purification capacity tested on Municipal Water/ Tap Water having TDS level of 750 ppm at room temperature.

Testing Information

The System has been tested according to IS 10500:2012 (Standards for drinking water as per Bureau of Indian Standards) for reduction of the hazardous substances

Performance Data Sheet-KENT Super Star Mineral RO™ Water Purifier

"This system has been tested according to NSF/ANSI 58 for reduction of the substances listed below. The concentration of the indicated substances in water entering the system was reduced to a concentration less than or equal to the permissible limit for water leaving the system, as specified in NSF/ANSI 58".

Substance	Influent challenge concentration mg/L	Maximum permissible product water concentration mg/L	Minimum % reduction
Total Dissolved Solids	750 ± 40 mg/L	187	86.8%

"Do not use with water that is microbiologically unsafe or of unknown quality w/o adequate disinfection before or after the system".

The replacement component, 20010 SP Inline Sediment Filter 8", 20009 SP Inline Carbon Filter 8", 20002 SP RO Membrane Welded 8" Housing, 20015 SP Post Carbon Filter (Blue), 20003 SP Hollow Fibre Membrane (RO), 20018 SP FRT 550, Can be purchased directly from the manufacturer **KENT RO SYSTEMS LTD.**