

# Treatlife ProSight PS10 Camera Setup Guide

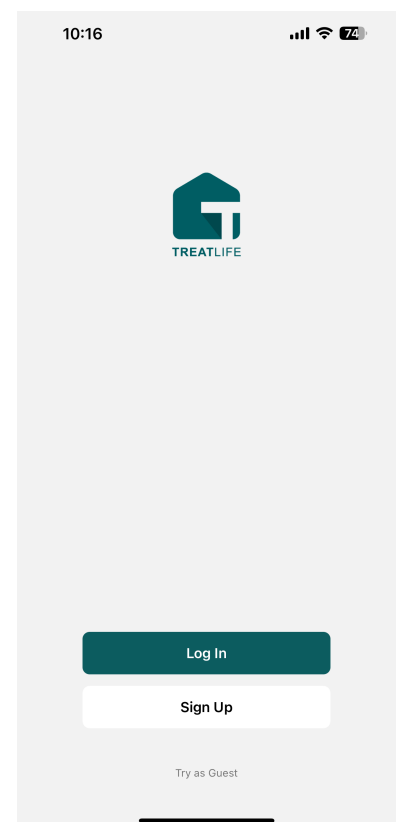
## Download the Treatlife App

- Scan the QR code provided on the package or in the manual, or search for 'TreatLife' in the Apple App Store or Google Play Store to download the app.



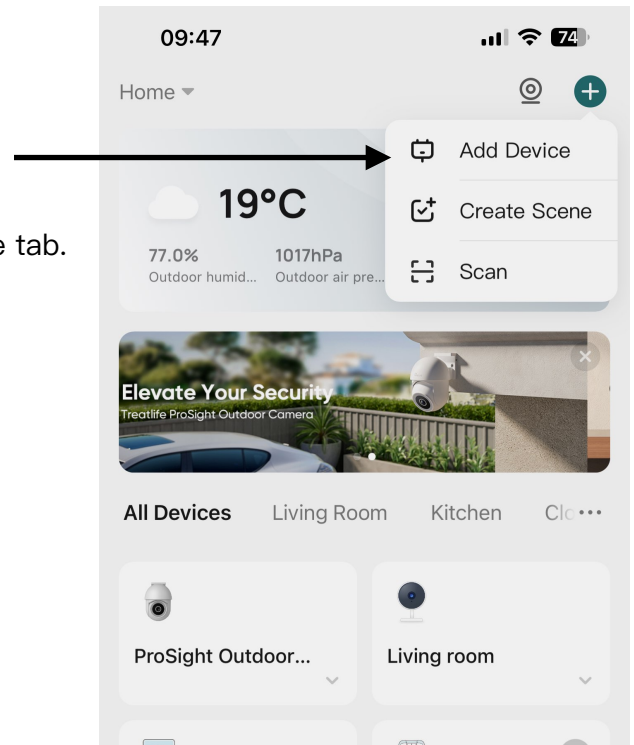
## Create an Account or Sign In

- Open the Treatlife app.
- Sign in if you already have an account, or create a new one.

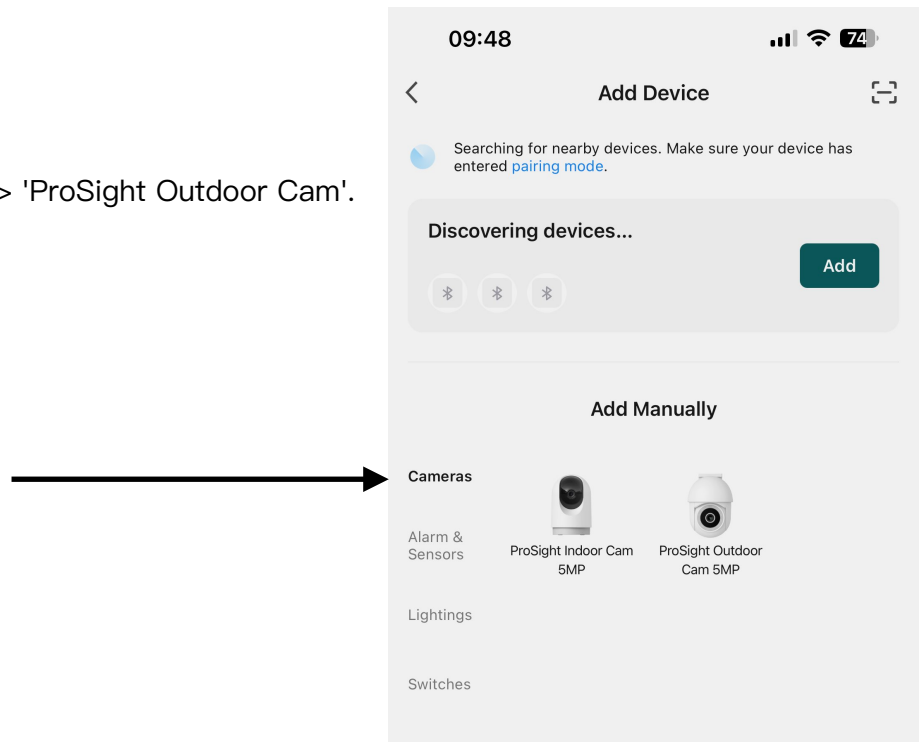


## Adding the Camera to the App

- Tap the '+' button at the top-right corner of the Home tab.

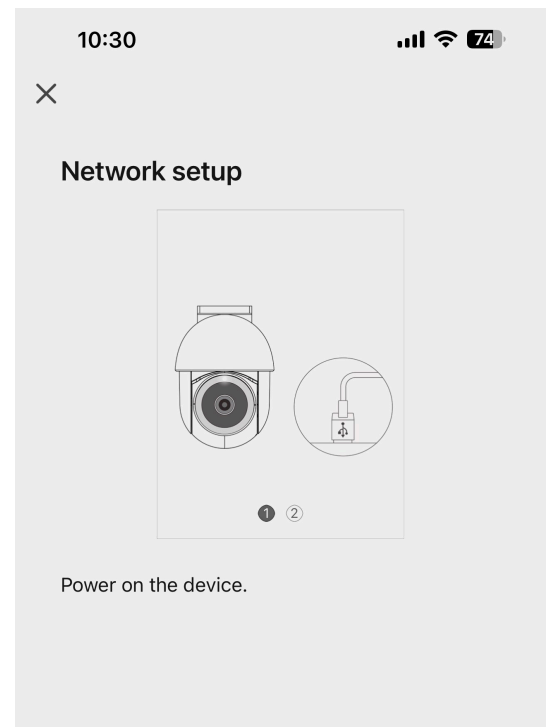


- Select 'Add Device' > 'Cameras' > 'ProSight Outdoor Cam'.



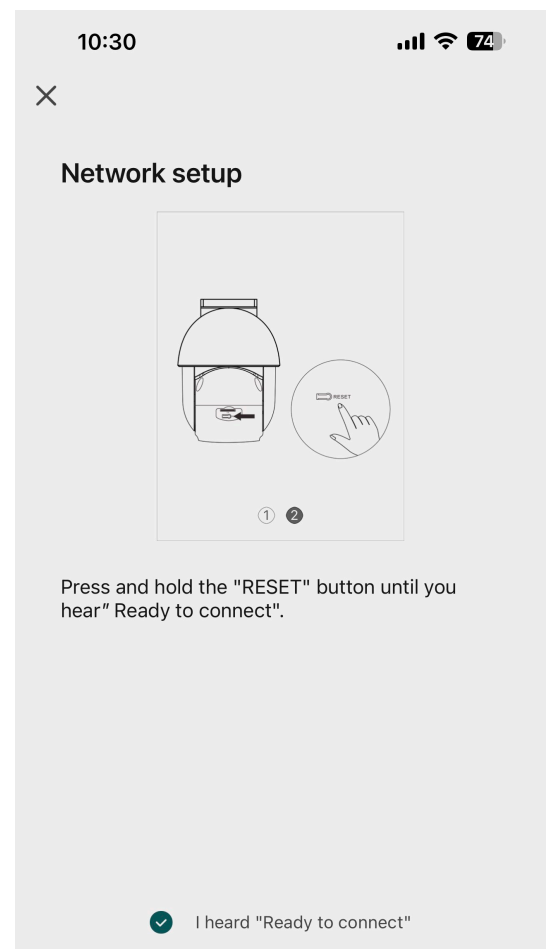
## Power On the Device

- Connect the camera to its power source.
- Then click 'Next'



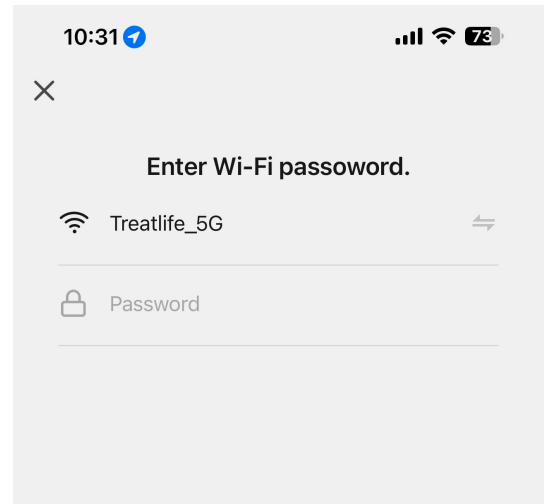
## Reset the Camera

- Press and hold the 'RESET' button until you hear the "ready to connect" prompt.
- Then click "I heard Ready to connect" and "Next"



## Wi-Fi Setup

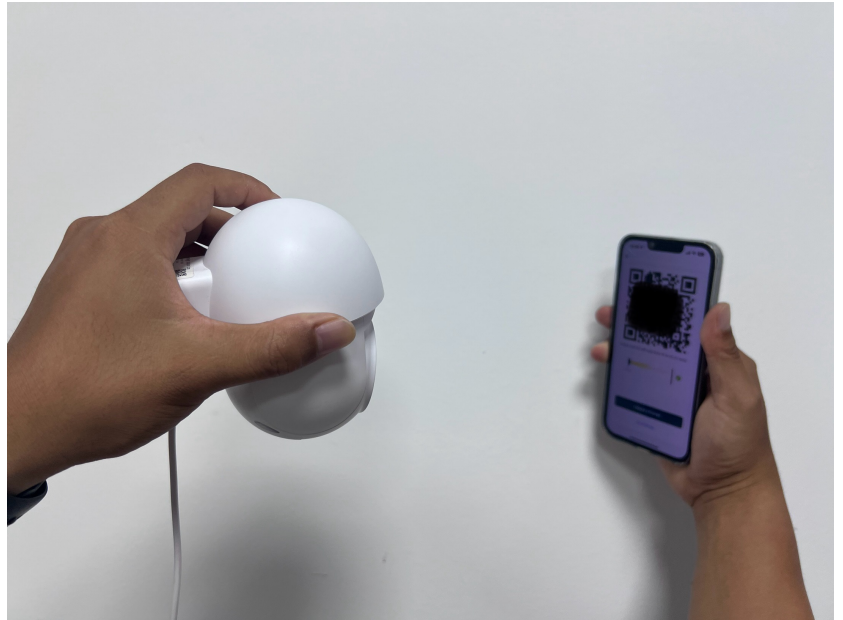
- Enter your Wi-Fi details and “Next” to generate a QR code.



## Scan QR Code with Treatlife Camera

- Carefully remove the protective film from the camera lens.

- Use your Treatlife camera to scan the QR code displayed on your phone's screen, maintaining a 15–20 cm distance.



- Await a confirmation prompt, and click “I heard a prompt” to complete the setup.

