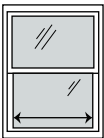
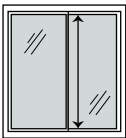


Portable Air Conditioner

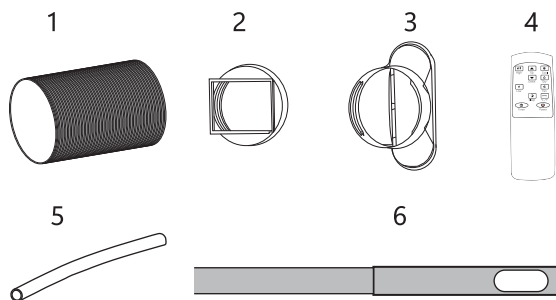
PAC002-8K/PAC002-10K

Quick Start Guide

Preparing the Window Panel

For Horizontal Sliding Window	For Vertical Sliding Window
	
Suitable for:20.5"~39.4"	Suitable for:20.5"~39.4"

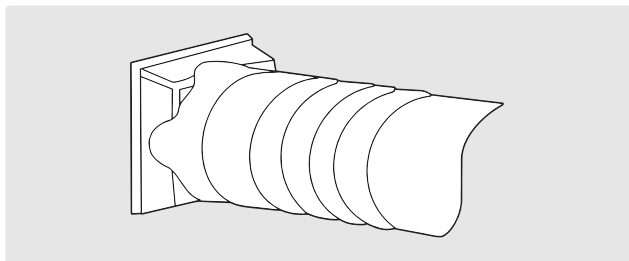
Accessories



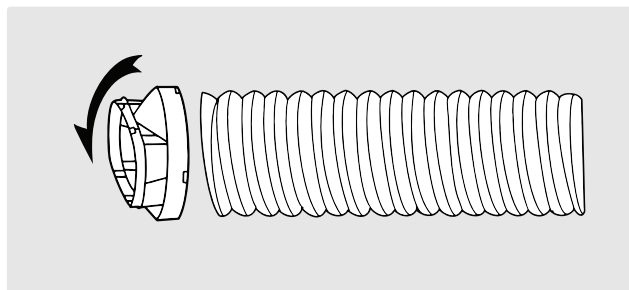
1	Exhaust hose	5	Water pipe
2	Hose connector	6	Window kit
3	Window kit adapter	7	User manual
4	Remote control		

Installing the Window Panel and Air Conditioner

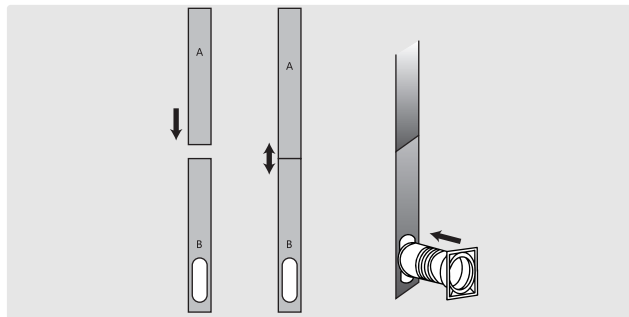
Step1: Connect the hose connector to one end of the exhaust hose.



Step2: Connect the windows kit adapter to the other end of the exhaust hose.

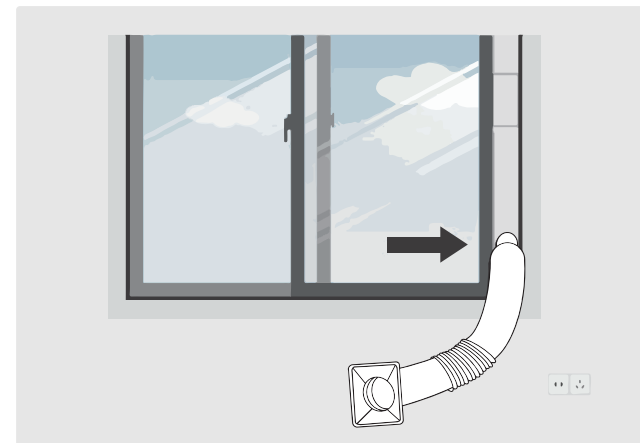


Step3: Extend the adjustable window kit to the length of your window. Connect the exhaust hose to the window kit.

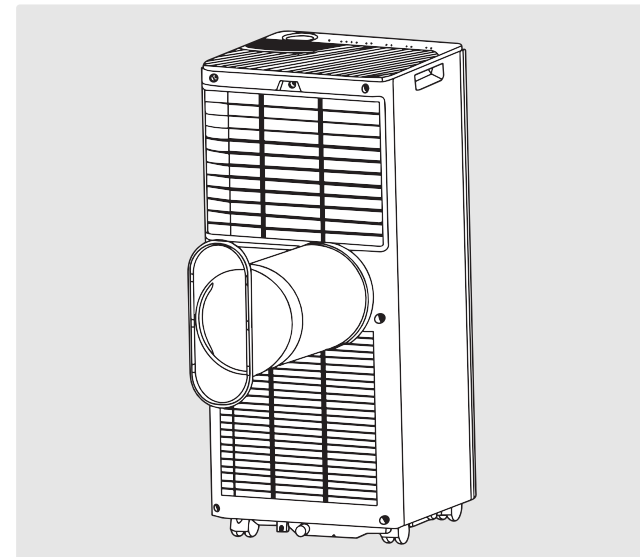


Step4: Close your window to secure the kit in place.

It needs to hold the window kit firmly in place,an secure the window kit with duct tape if required. It is recommended that the gap between the adapter and the sides of the window should be sealed off for maximum efficiency.

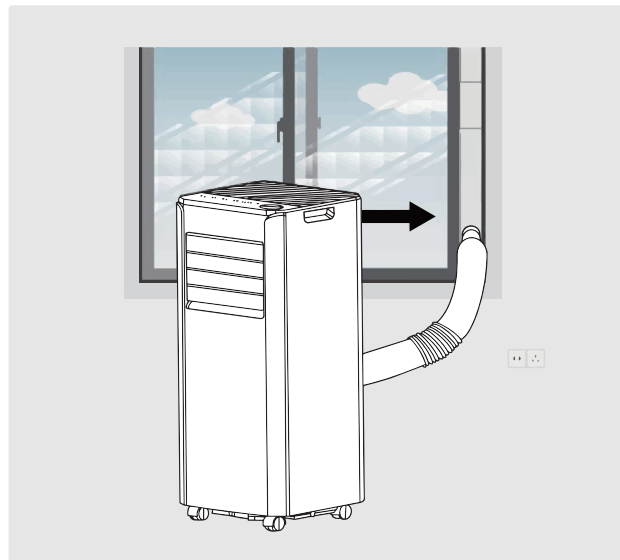


Step5: Attach the hose connector to the exhaust air outlet of unit.



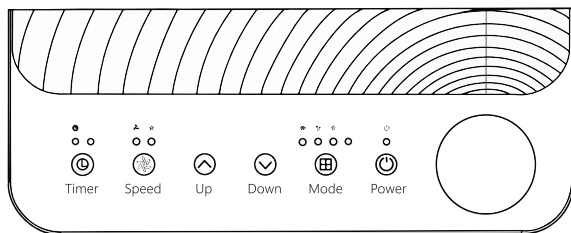
Step6: Close your window to secure the kit in place.

It needs to hold the window kit firmly in place, and secure the window kit with duct tape if required. It is recommended that the gap between the adapter and the sides of the window should be sealed off for maximum efficiency.



Step7: Adjust the louver at the air outlet, and then switch on the unit.

Display



Control Panel

POWER

- Press to switch the machine on or off.

MODE

- Press to switch the operation mode to cooling, fan and dehumidifying.

SPEED

- Press to switch the fan speed between HIGH and LOW.

TIMER

- Sets a time for the unit to automatically start or stop.

UP

- Increasing the desired temperature (61°F - 90°F) or timer setting.

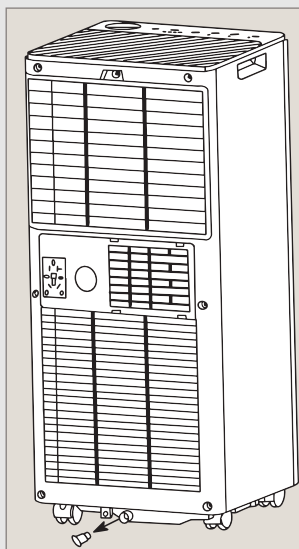
DOWN

- Decreasing the desired temperature or timer setting.

Cleaning and Maintenance

Manual drainage

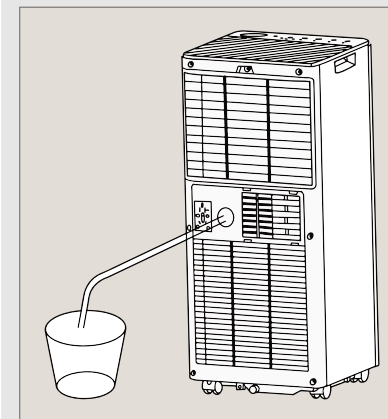
When the machine stops after the water is full, please unplug the power plug.



1. Place a water container below the side water outlet behind the unit.
2. During drainage, the body can be tilted slightly backwards.
3. Unplug the water plug, the water will automatically flow into the water container.
4. When the water is fully discharged, place the water plug back into place.

Continuous drainage

1. Switch off the unit before operating.
2. Remove the plug of the water outlet opening, and keep it in a safe place.
3. Securely and properly connect the drain hose and make sure it is not kinked and clear of obstruction.
4. Place the outlet of the hose over a drain or bucket and ensure that water could freely flow out of the unit.
5. Do not submerge the end of the hose into water; otherwise it can cause an "Air Lock" in the hose.

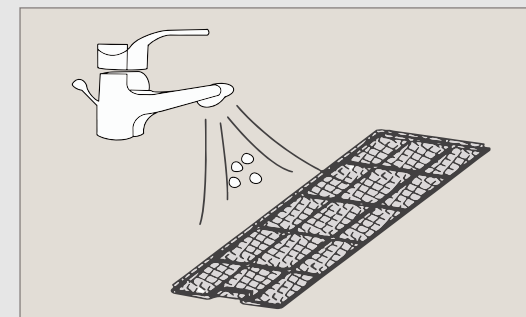


To avoid water spillage:

- As the negative pressure of the condensate drain pan is large, tilt the drain hose downward towards the floor. The degree of inclination should exceed 20 degrees.
- Straighten the hose to avoid a trap existing in the hose.

Air filter cleaning

For better performance and less operational noise, clean the appliance filter at least once every two months.



1. Remove both grills from the back of the unit.
2. If there is stubborn dirt or dust, immerse in lukewarm water and rinse a couple of times.
3. Let the filter dry before re-attaching to the main unit.