



TIMBER CONSTRUCTION PROJECT DOORS

NEW. In HPL quality with rounded and angular door edges
with optional insert in oak or beech

HÖRMANN

Brand quality made in Germany



The family-owned company Hörmann offers all important construction components for building and renovating projects from a single source. We manufacture in highly specialised factories using state-of-the-art production technologies. Our employees work intensively on new products, continual further developments and improvements to details. The results are patents and unique products on the market.



“A GOOD REPUTATION MUST BE EARNED.”

August Hörmann

In keeping with the tradition started by the company's founder, the Hörmann brand is a true promise of quality and, with sales of over 20 million doors, door frames and operators, is one of Europe's most successful suppliers. Due to the comprehensive international sales and service network, Hörmann is your strong partner for high-quality construction components.



WE THINK AND ACT GREEN. As a family business, we are very conscious of our responsibility to future generations and offer all products for residential construction CO₂-neutral as standard. The Hörmann sustainability strategy aims to reduce and avoid emissions. We cover 100% of our electrical power needs at all European production sites with genuine green electricity from renewable sources. We also apply many other measures to reduce our consumption and save more than 75000 tonnes of CO₂ each year. We work with ClimatePartner to offset the remaining emissions by supporting certified climate protection projects.



You can find further information at
www.hoermann.com/sustainability



ClimatePartner
certified product
climate-id.com/XNEBKC



CO₂
measure
reduce
contribute

Durable and robust

Doors are especially exposed to stress in schools, nurseries, offices and hotels. To meet these demands, we have developed our premium-quality DuraProject door and door frame surface finish that offers the same tested and certified product properties in accordance with DIN EN 438-3 as an HPL surface. You can choose between two different surface structures and three colours. Combined with our robust DuraProject timber frame or VarioFix steel frame, your door offers a durable, heavy-duty solution for your construction project.



TESTED HPL QUALITY



Tested and certified according to DIN EN 438-3



Impact-resistant



Wear- and scratch-resistant



Light-resistant



Vapour-resistant



Heat-resistant



akkreditiert durch die Deutsche Akkreditierungsstelle GmbH (DAkkS)

P R Ü F U N G S Z E U G N I S

ST-23-01-31-02

Produkt: DuraProject Schichtstoff-Oberfläche mit HPL-Eigenschaften auf Innentüren mit 3 mm Holzwerkstoffdeckplatte, Röhrenspanplattenmittellage, Underlay und Melamindekor unifarben, glatt bzw. Perlstruktur/Bütte

Händler: Hörmann KG Verkaufsgesellschaft
UpheiderWeg 94 - 98
33803 Steinhagen

Auftrag: Durchführung von Prüfungen für HPL-Eigenschaften an Oberflächen von Innentüren

Prüfbericht: 2723025 vom 31.01.2023

Prüfergebnisse:

Eigenschaften	Ergebnisse	Klassifizierungsanforderung nach DIN EN 438-3:2016-06, Tabelle 5 für Schichtpresstoff HGS Beanspruchbarkeitsklassifizierung: 333
Beständigkeit gegenüber Stoßbeanspruchung mit einer Kugel mit kleinem Durchmesser (DIN EN 438-2:2016-06, Pkt. 20*)	24 N	erfüllt
Beständigkeit gegenüber Oberflächenabrieb (DIN EN 438-2:2016-06, Pkt. 10)	> 450 Umdrehungen	erfüllt
Kratzfestigkeit (DIN EN 438-2:2016-06, Pkt. 25)	Grad 4	erfüllt
Lichtechtheit (DIN EN 438-2:2016-06, Pkt. 27)	Graumaßstabswert 4	erfüllt
Beständigkeit gegenüber Wasserdampf (DIN EN 438-2:2016-06, Pkt. 14)	Grad 4	erfüllt
Beständigkeit gegenüber trockener Hitze (DIN EN 438-2:2016-06, Pkt. 16*)	Grad 4	erfüllt
Beständigkeit gegenüber feuchter Hitze (DIN EN 438-2:2016-06, Pkt. 18*)	Grad 5	erfüllt

* Prüfung wurde abweichend von der Norm am Türgesamtaufbau durchgeführt.

Dresden, 31.01.2023

R. Emmer

Leiter des Prüflaboratoriums



Reich

verantwortlicher Bearbeiter

Impressive right down to the tiniest detail

We want our construction project doors to impress you right down to the tiniest detail.

You can enjoy your Hörmann residential internal doors for years to come thanks to standard features such as the 4Protect edge guard or our light-impermeable seal that blocks out light from an adjoining room for an undisturbed and restful night's sleep.





**4Protect
edge guard**

RESISTANT EDGE. The standard 4Protect edge guard on flush-closing doors and rebated doors with angular edges offers a high resistance to impact, wear and scratches. This means that doors with a DuraProject surface finish are ideally protected against everyday wear and tear.

SEAMLESS WHITE. The rebate edge of all doors with a white DuraProject surface finish is specially coated as standard for a seamless appearance. In addition, the 4Protect edge guard ensures a seamless transition to the door leaf in doors with angular edges. You can enjoy a continuously white door view without the bothersome unsightly edges typical of standard doors.

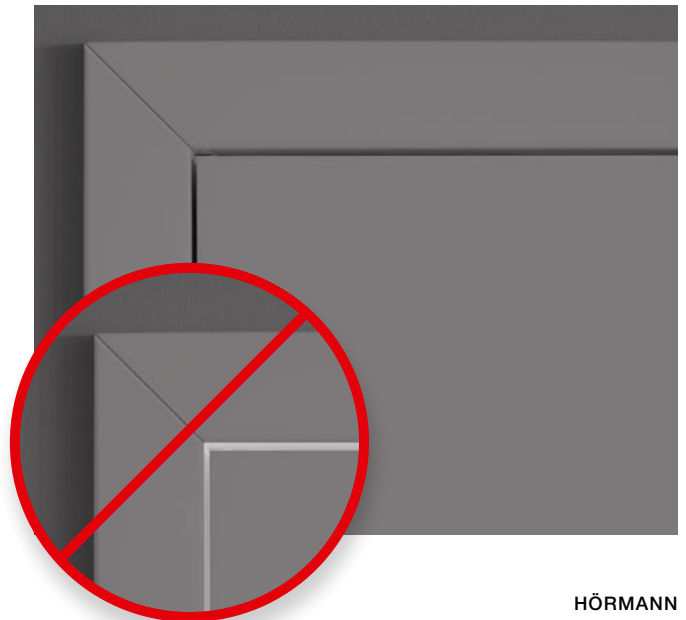


LIGHT-IMPERMEABLE WHITE SEAL.

Hörmann's brand quality impresses with exquisite details. Take the standard light-impermeable seal for flush-closing doors, for example. With no visible light gap, you'll no longer be disturbed by light from the adjoining room.

The standard 4Protect edge guard impresses offers a seamless view without disrupting pencil edges on flush-closing doors and rebated doors with angular edges.

The standard light-impermeable seal blocks out light from the adjoining room.



Timber construction project door DuraProject

High-quality complete element for custom requirements

Rebated door leaf



Harmonious appearance with rounded edges

Only from Hörmann
DuraProject in HPL quality with rounded door edges



Linear view with angular edges with 4Protect edge guard



4Protect edge guard

Flush-closing door leaf



Virtually flush-fitting transition from the frame to the door leaf with 4Protect edge guard



4Protect edge guard

NEW. Batten in oak or beech (optional)



Rebated door leaf with oak insert



Rebated door leaf with beech insert

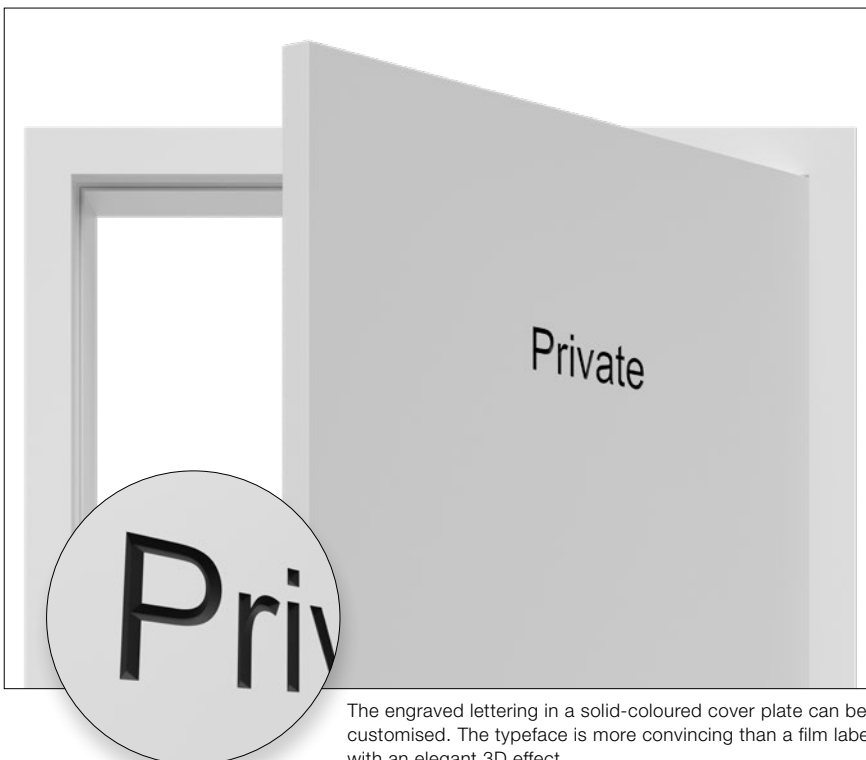


Flush-closing door leaf with oak insert



Flush-closing door leaf with beech insert

NEW. Individual millings (optional)



The engraved lettering in a solid-coloured cover plate can be customised. The typeface is more convincing than a film label with an elegant 3D effect.

Door construction



Tubular chipboard plate

The solid plate with horizontal tubes gives the door leaves a high surface stability. These high-quality residential internal doors are suitable for extremely heavy-duty wear.

Rebated door leaf

Widths: 610, 735, 860, 985 mm

Heights: 1985, 2110 mm

Wall thicknesses: 100, 125, 150, 175, 205, 270 mm

Flush-closing door leaf

Widths: 584, 709, 834, 959 mm

Heights: 1972, 2097 mm

Wall thicknesses: 100, 125, 150, 175, 205, 270 mm

Door and frame design

Premium carpenter quality for high demands



Attractive appearance with precision-fit and installation-friendly corner joints ¹

Jamb lining

- Screwed corner joints with jamb lining connection
- Easily readjustable
- Strong friction locking

Cladding

- Solid-metal screw connectors
- Excellent friction locking
- Direct pressure distribution on the connection surfaces
- No visible drilled holes in the cladding

High form stability thanks to the robust frame construction ²

- Jamb lining 25 mm thick
- Jamb lining with Duradecor surface finish
- Melamine-coated backing
- Claddings made of MDF

A Edge radius 3 mm

B Wall edges

16 mm

23 mm (optional)

C Cladding widths

60 mm

70 mm (optional in

DuraProject White lacquer)

80 mm

Permanently quiet closing thanks to a high-quality seal ³

- Two-chamber system
- Clean contact with the door leaf
- Good absorbing properties
- **NEW.** Opaque

Robust standard lock plate for added security ⁴

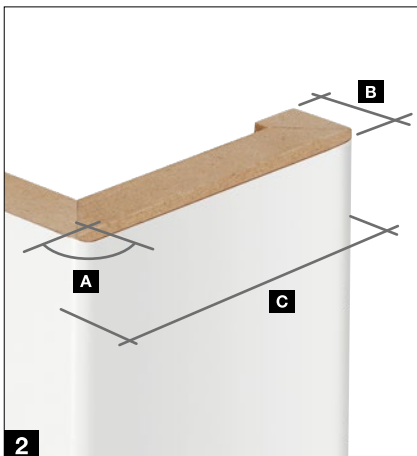
- Movable backfill
- Secured with 6 screws
- Double-turn closing cycle
- Retrofit kits available

Hybrid hinge pocket prevents lowering of the door ⁵

- Carrying capacity 80 kg
- Reinforced metal plastic mount
- Secured in jamb lining with 4 screws
- Guiding sleeves extending to front edge of cladding
- For timber and glass doors

High stability thanks to door leaf with frame construction ⁶

- Internal doors with 70 mm frame construction
- On hinge side and lock side



VarioFix steel frame

The perfect combination of design, robustness and a long service life

High-quality design ¹

For the steel frame VarioFix, the corner joints feature high-quality welding and a flush polish, meaning there are no visible mitre cuts in the frame corners. In flush-closing doors, the robust construction guarantees a uniform gap dimension, as the door frame can no longer warp after fitting.

Ideal combination

The steel frame harmonises perfectly with other timber frames due to a frame face of 55 mm on both sides. To match our door leaves in DuraProject White lacquer and real lacquer Traffic white, the VarioFix frame is available in Traffic white RAL 9016 with a white sealing profile or in RAL to choose. The frame can be combined with glass or timber door leaves.

Particularly long-lasting

Thanks to the high-quality powder coating, the frame can withstand run-ins with heavy suitcases or vacuum cleaners, and any damage to the surface is easy to repair. Even cleaning water and a thorough washing cannot damage the door frame.

Fast fitting

The VarioFix steel frame can be fitted to all wall types without screw fitting, using 2C foam, like a timber frame. This results in time savings of up to 50% during fitting compared with standard steel frames. Wall tolerances of up to 20 mm are no problem for the steel frame VarioFix. The adjustable decorative rebate easily compensates for different wall thicknesses during renovations and new construction projects.



50% faster fitting

High-quality surface finishes

Permanent durability for an attractive door view

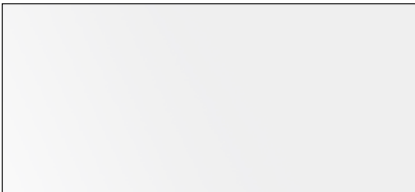


Extremely
impact-resistant

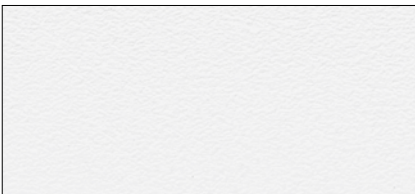


4Protect edge guard

DuraProject surface finishes

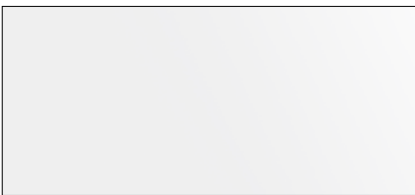


Smooth

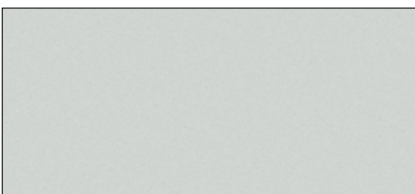


Parchment

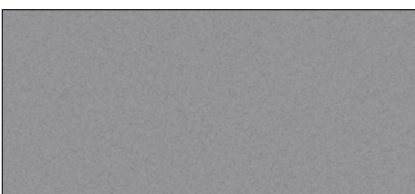
Colours



Traffic white RAL 9016

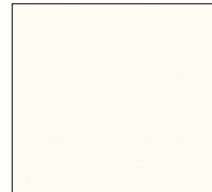


Light grey RAL 7035



Dusty grey RAL 7037

Standard HPL surfaces



Premium white



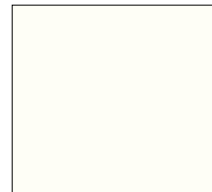
Solid Premium white



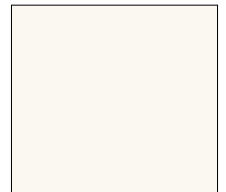
Carbon Grey



Black



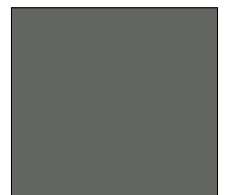
Crystal White



Pearl White



Silver Grey



North Sea

The HPL surface is only available for rebated timber doors with angular edge and flush-closing timber doors. For preferred colours, you can also obtain all HPL surfaces from the colour collections from Resopal, Egger or Pfleiderer on request.

All RAL colours based on the RAL colour chart.

Door fittings

For particularly heavy-duty wear

Rebated door leaves



Deadlock, Class I, lock cover in nickel silver



2-part hinge V 3420 WF (standard), also available for steel door frames as hinge V 8120 (optional)



3-part hinge V 4426 WF (optional), also available for steel door frames as hinge 8026 (optional)



3-way adjustable hinge VX 160 - 18 (optional)

Flush-closing door leaves



Magnet convenience lock with short lock cover (as standard)

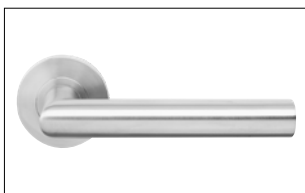


Magnetic catch lock (optional)

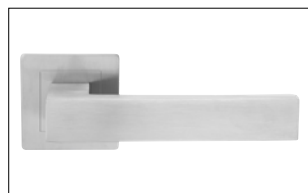


Euro hinge concealed 3-way (as standard)

NEW. Euro lever handle Pro



Euro round lever handle Pro
Matt stainless steel



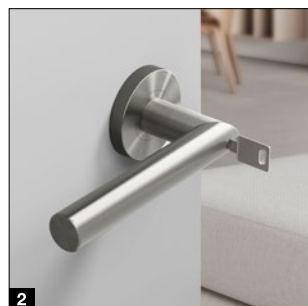
Euro angular lever handle Pro
Matt stainless steel

- Minimalist door view without closing rose escutcheon
- Stress class 3 (construction door quality)
- Lever handle hole prepared at the factory for particularly fast and simple fitting as standard

NEW. ProLock locking



ProLock locking

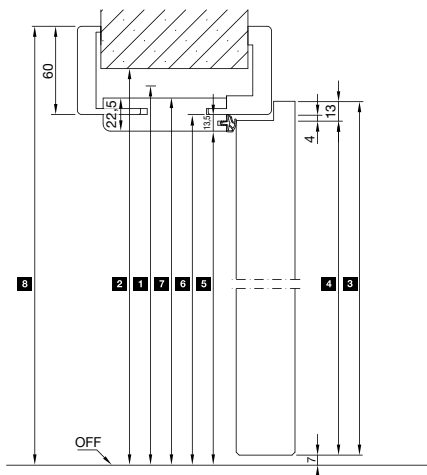


ProLockPlus locking

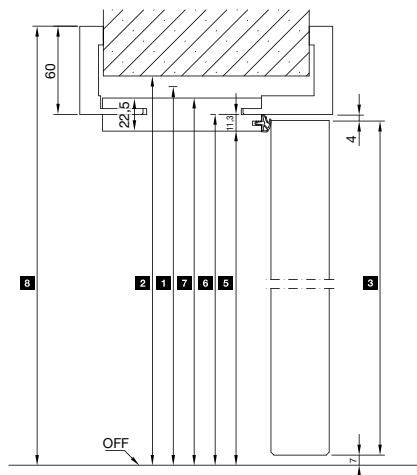
- Optional ProLock locking: integrated practically invisibly on the inside of the lever handle, for locking and unlocking the door from inside directly via the handle **1**, emergency opening on the opposite side possible
- Optional ProLockPlus locking: lock on the outside of the lever handle, for locking and opening the door from outside with a key **2**, emergency opening on the opposite side possible

Vertical view

Rebated



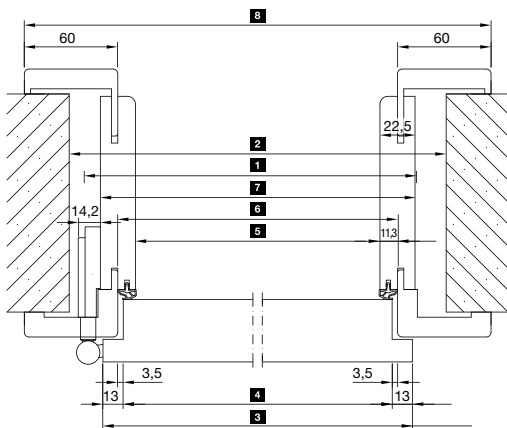
Flush



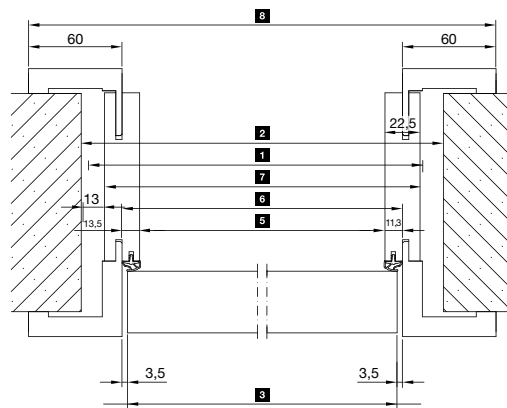
		1875	2000	2125	2250
1	Nominal height				
2	Wall opening	1880	2005	2130	2255
3	Door leaf exterior dimension	Rebated	1860	1985	2110
		Flush	1847	1972	2097
4	Leaf rebate dimension	1847	1972	2097	2222
5	Clear passage dimension	1843	1968	2093	2218
6	Frame hold dimension	1856	1981	2106	2231
7	Overall lining dimension	1868	1993	2118	2243
8	Overall frame dimension For 60 mm cladding (for 80 mm cladding + 20 mm)	1916	2041	2166	2291

Horizontal view

Rebated



Flush

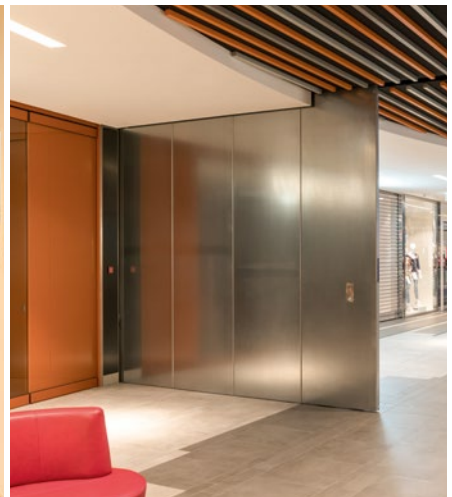
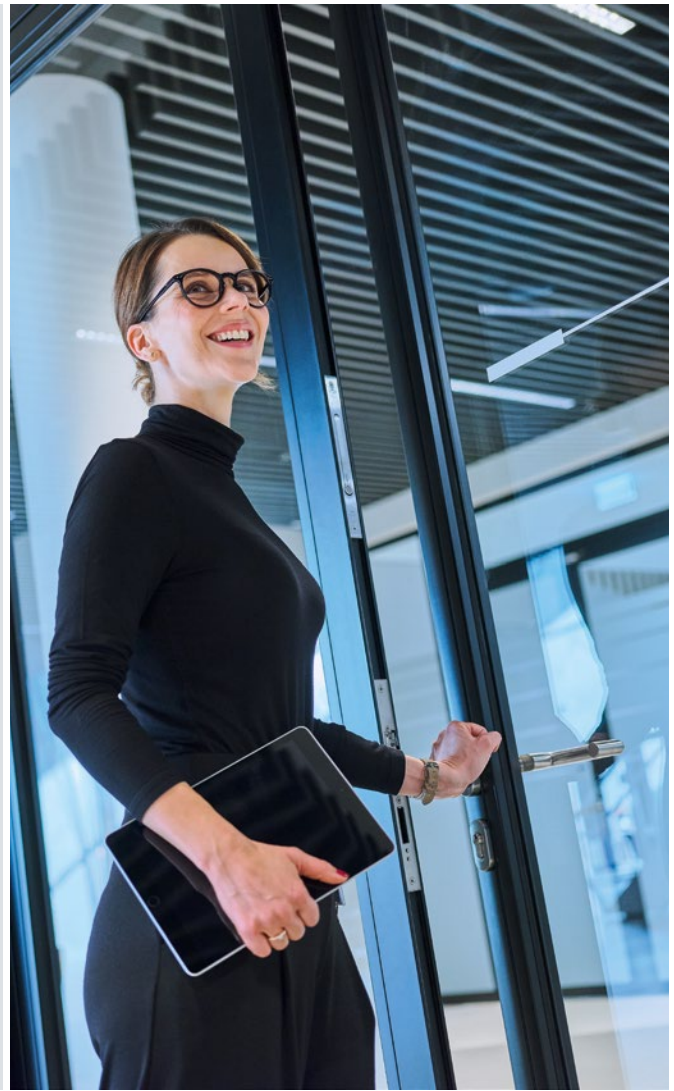


		625	750	875	1000	1125	1250
1	Nominal size width						
2	Wall opening	635	760	885	1010	1135	1260
3	Door leaf exterior dimension	Rebated	610	735	860	985	1110
		Flush	584	709	834	959	1084
4	Leaf rebate dimension	584	709	834	959	1084	1209
5	Clear passage dimension	564	689	814	939	1064	1189
6	Frame hold dimension	591	716	841	966	1091	1216
7	Overall lining dimension	614	739	864	989	1114	1239
8	Overall frame dimension	711	836	961	1086	1211	1336

Hörmann. For Life.

Thanks to their superior quality, Hörmann products ensure that residential and industrial buildings as well as construction projects function sustainably, reliably and economically. They are a crucial part of your building – and will remain so over the long term.

**INDUSTRIAL DOORS. LOADING TECHNOLOGY.
SLIDING DOORS. CONSTRUCTION PROJECT
DOORS. PERIMETER PROTECTION SYSTEMS.**



Some of the products shown feature special equipment and do not always correspond to the standard versions. The surface finishes and colours shown are subject to the limitations of the printing process and cannot be regarded as binding. All RAL colours are based on the RAL colour chart. Protected by copyright. No part may be reproduced without our prior permission. Subject to changes.