



KOGAN ALEXA BUILT-IN SMART WATCH BAND

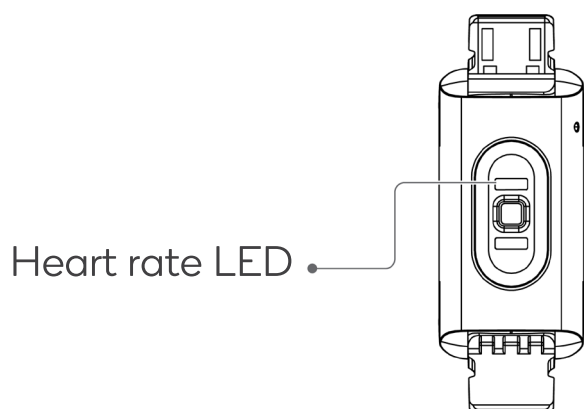
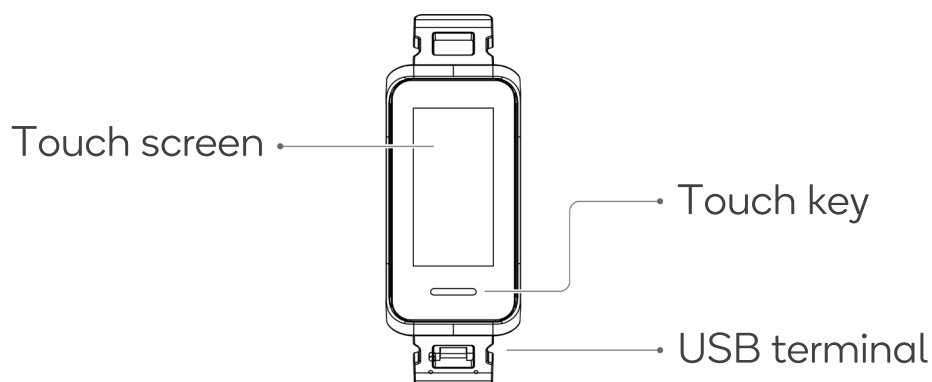
(KALXBNDLKA, KALXBNDLUA, KALXBNDGRYA,
KALXBNDGRNA, KALXBNDPNKA, KALXBNDREDA)

Safety & Warnings	3
Overview	4
Operation	5
Pairing with VeryFit app	7
Functions	8
Using with Amazon Alexa	14
Cleaning & Care	17
Specifications	17
Notes	18

SAFETY & WARNINGS

- To prevent device failure, fire and explosion, never place the smart band or its accessories in any extremely high temperature or extremely low temperature areas.
- To prevent device damage, accessory damage and device failure, always protect the device against strong impact or shock.
- Do not disassemble or modify the device or its accessories without authorization. Any device failure should be referred to our after-sales service personnel.

OVERVIEW



Functions of the Touch key

Click the Touch key to:

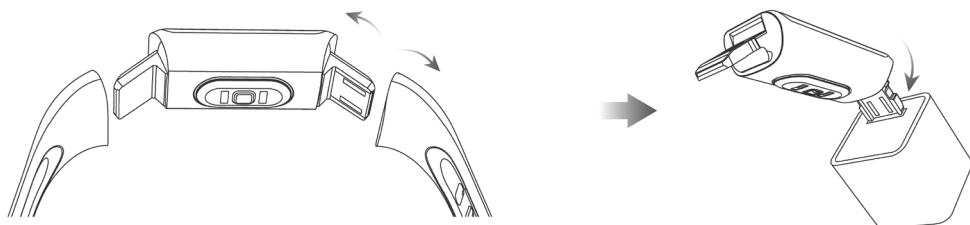
1. Return (back)
2. Turn on the screen

OPERATION

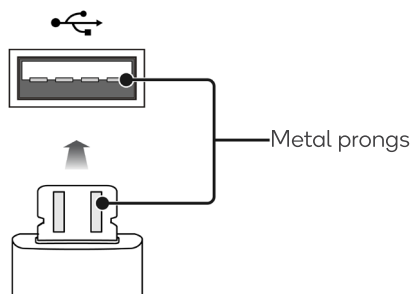
Note:

- Ensure the smart band is charged fully before first use.

Charging the Smart Band



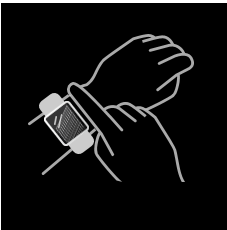
1. Pull the wrist band from the main body of the smart band to remove.
2. Insert the USB charging terminal of the main body into a charging adapter's USB port to charge the smart band.



- Ensure the smart band is inserted the right way up, so polarity is not reversed. The metal prongs on the smart band should make contact with the metal prongs within the USB port.
- Ensure the adapter meets the specified voltage and current (5V/500mA).

Wearing

- 1. Wear it correctly: make sure that the bottom sensor is properly attached to the skin and the strap shall be one finger away from the wrist.
- 2. Touch operation: the smart band supports full-screen touch operations.
- 3. Touch key: the smart band has a touch key. Short press: return or close a notification.



Getting started

Powering on and off	To power off, open Setup menu and select “Power Off”.
	To power on, hold the Touch key.

Navigating and operation basics

Swipe the screen up/down	To scroll through pages.
	To view long text or details.
Swipe the screen left/right	To view quick access pages next to homescreen.
Click the screen	To go to the sub-page.
	To complete the corresponding action, depending on which on-screen button is clicked.
Click and hold the screen	To change the watch face wallpaper.
Click and hold the touch key	To end an activity monitoring session. Hold for 2 seconds to activate Alexa.

PAIRING WITH VERYFIT APP

For Android users, open Google Play Store on your smartphone.

For iOS users, open App Store on your iPhone.

Search for “Veryfit” and download the app.

Alternatively, scan this QR code on your device to open the appropriate store for your device and go straight to the app download page.



Once downloaded, open the app, fill in your info, then go to the “Home” page and select “Bind Device.”

Make sure Bluetooth on your smartphone is turned on. You will see a list of devices. Select the smart band and continue with the binding process.

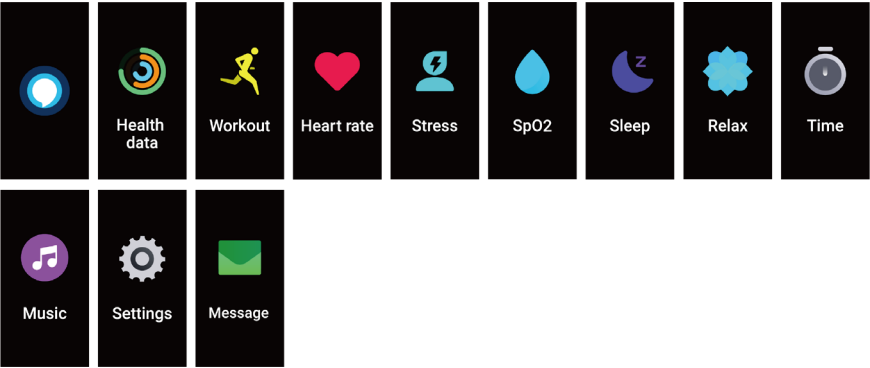
Light up the smart band screen and bring it close to your phone.

Confirm the binding request on the smart band. Fill in your information and set your step goal on the app to complete the binding. Make sure location/GPS permissions are granted to the app for full functionality.

FUNCTIONS

Apps

Swipe up or down to select an icon. The icons include: Message, Health Data, Workout, Heart Rate, Stress, SpO2, Sleep, Relax, Music, Time and Settings.



Dial

You can switch between different dials in the “Dial Settings”. And you can download and install more dials in the “Dial Market”.

Sports

14 Sports modes are provided:



You can choose to show or hide any sports mode in “veryfit”.

To start an exercise, start the Sports app, click the icon of sports type, set the goal, then start to exercise.

To end an exercise, press and hold the touch key and follow the prompt on the screen.

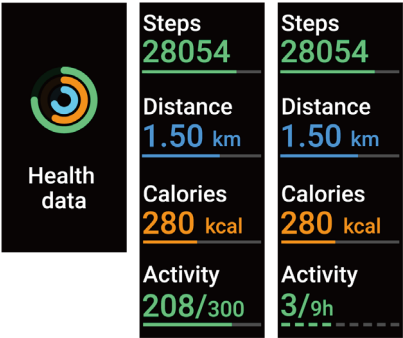
Intelligent detection

The smart band has the Intelligent Sports Detection function and can detect if the user is running or walking; this function can be enabled or disabled in the app.

The Sports Summary of the smart band contains a variety of sports data and the details can be viewed in the VeryFit app.

Health Data

It supports viewing the daily accomplishment of the following info: Steps, Calories, Distance and Activity.



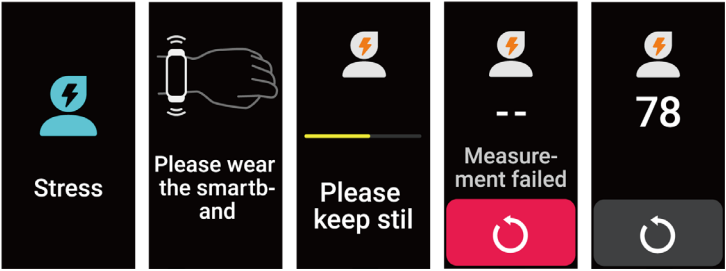
Heart Rate



This device supports measuring your heart rate any time or viewing the daily monitoring data. Also, you can set the measurement frequency in the app settings.

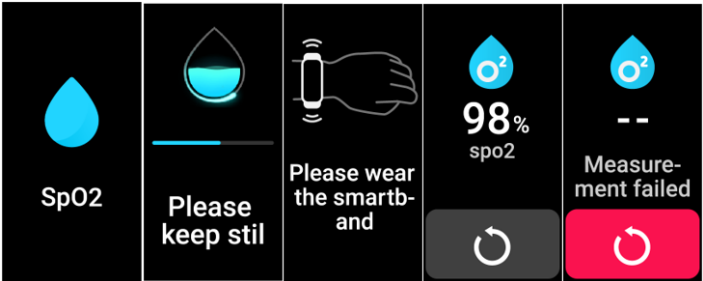
After you start the heart rate measurement app, you should keep your arms and wrists still during the measurement.

Stress



After you start the stress measurement app, you should keep your arms and wrists still during the measurement.

SpO2



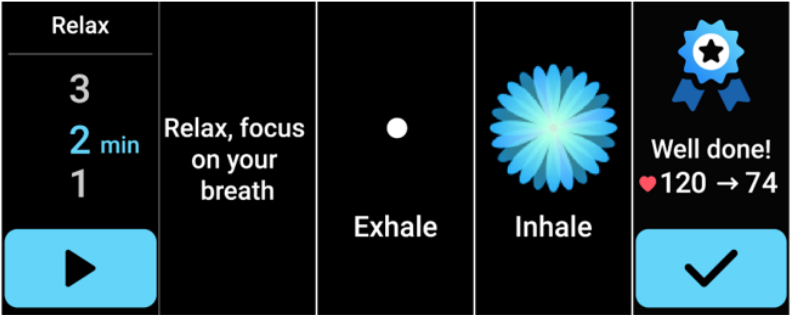
After you start the SpO2 measurement app, you should keep your arms and wrists still during the measurement.

Sleep



You can view the most recent sleep record and sleep status at each stage.

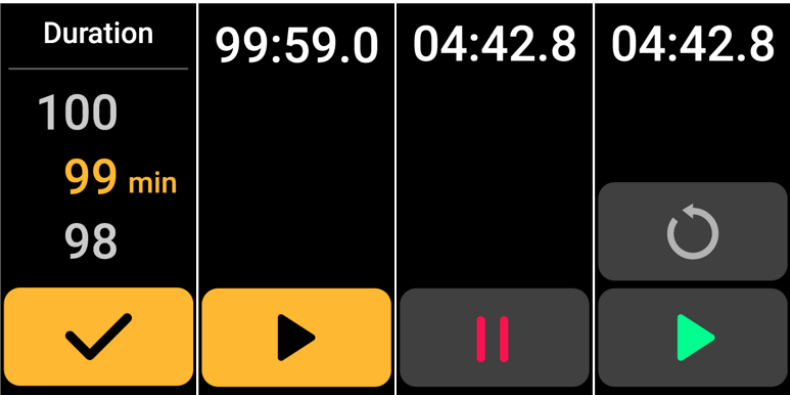
Relax



Enter the Relax app and choose the duration.

Click to start, then follow the vibration frequency and animation instructions to adjust your breathing and it will help you relax.

Time > Stopwatch



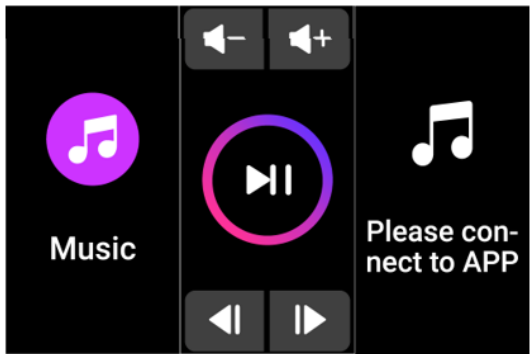
You can set the stopwatch on the Smart Band, it supports recording multiple times.

Time > Timer



You can set the duration of timer on the smart band and it will remind you when time is up.

Music



When the bracelet is connected to the App, you can control the music player on your phone. Common operations like Next/Previous, Play/Pause and Volume +/- are supported.

This function can be displayed\hide in the app settings.

Settings



Under Settings, functions like Find Phone, Restart, Power off, reset (reset the smart band, all data in the smart band will be cleared and it will be unbound from the phone) and About are provided.

Message

It supports different notifications, including message, incoming call, exercise reminder, “Drink Some Water!” tip, daily exercise goal reminder, etc.

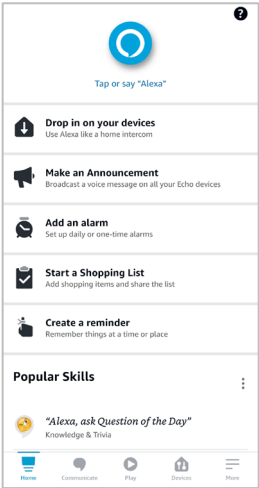
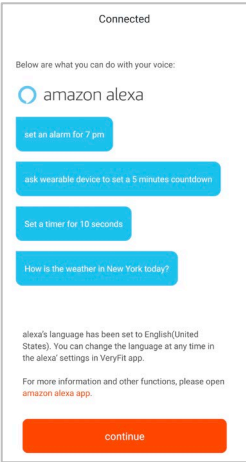
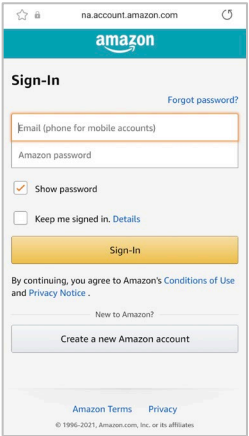
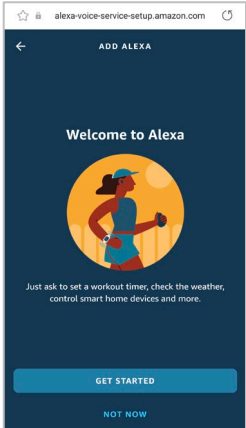
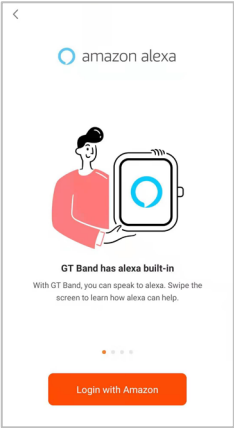


USING WITH AMAZON ALEXA

Syncing with Alexa

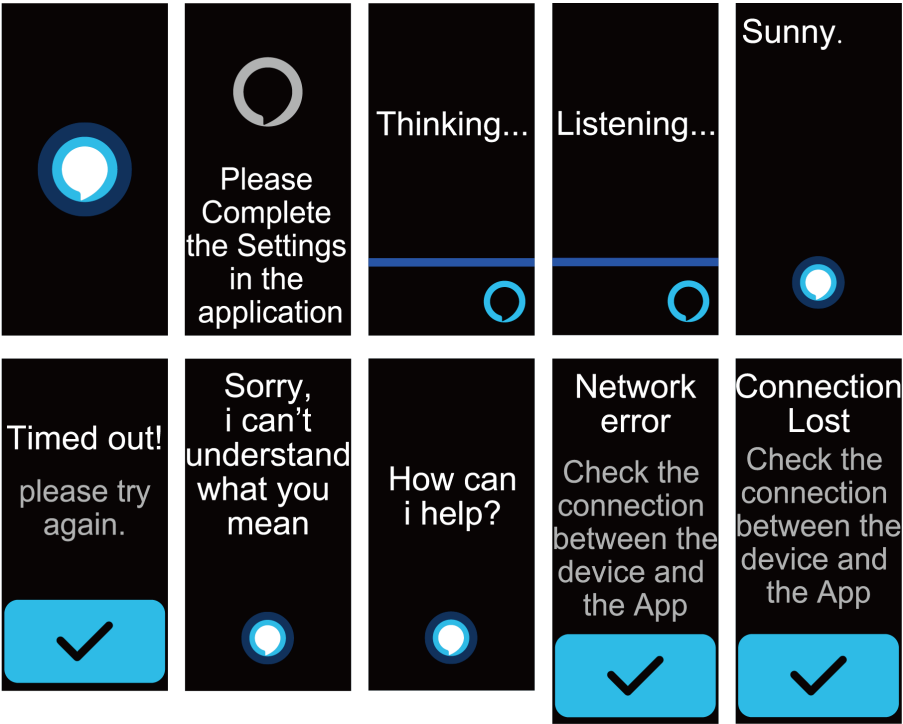
Ensure you have the Amazon Alexa app downloaded and have your Alexa account set up first. To pair the Smart Band with Alexa, open the VeryFit app, go to the Device page, click on your device, then find the Amazon Alexa function among the settings.

Follow the prompts on the screen, log in with your Amazon account, authorise your smart band by clicking Allow, and finish the pairing process. Finally, you can choose your preferred language setting for Alexa.



The band supports Alexa voice functions. After inputting a voice command in the listening interface, it will enter the thinking interface and return the result.

Timed out? When the request times out, the voice cannot be recognized, the account is not logged in, the network connection is unstable, or the Bluetooth is not connected, a corresponding prompt will be displayed.

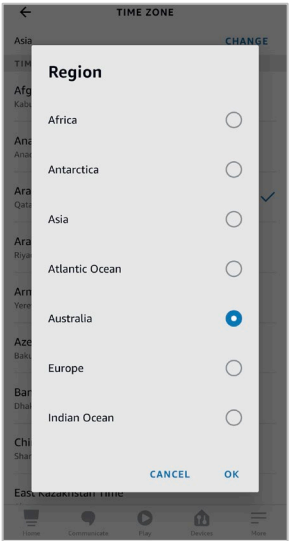
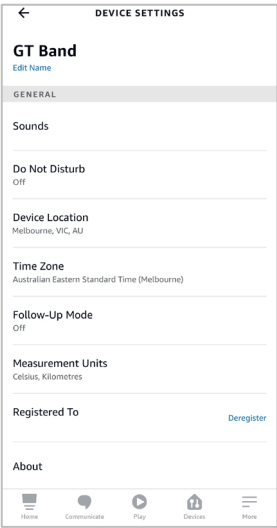


Please note: The band has to stay connected with the phone in order to use Alexa.

Time and Location Settings of Alexa

Please note that Alexa doesn't know the location and time zone of your smart band until you have the location and time zone updated in the Alexa app. Without doing this, Alexa cannot check your local weather or set the correct alarm.

To update your default location and time zone settings, first open your Alexa app, then go to the Devices page, click on All Devices, select your smart band. Then click on Device Location, fill in your default location, then click on Save. Finally, under Time Zone settings, change the region by clicking on "Change" on the top right corner, select Australia, then specify which Australian time zone.



CLEANING & CARE

Below are three recommendations on wearing and maintenance:

- Keep the device clean
- Keep the device dry
- Do not wear the device too tight

For cleaning:

- Do not use household cleaners to clean the device. Use soap-free cleaners instead.
- For stains that are difficult to remove, it is recommended to scrub with alcohol.

Waterproof performance: the device is not suitable for diving, swimming in the sea or sauna, it is suitable for swimming pool, shower (cold water) and swimming in shallows.

SPECIFICATIONS

Battery capacity	110mAh
Charging time	About 2 hours
Waterproof level	5ATM
Operating temperature	0°C-60°C
Product frequency	2402-2480MHZ
Screen type	1.05" -inch colour screen
Charging voltage	5V±0.2V
Battery life	7 days, average use
Weight	26g
Bluetooth version	BLE5
Max. Transmission power consumption	4dBm

NOTES

[illegible]

[illegible]

Need more information?

We hope that this user guide has given you the assistance needed for a simple set-up.

For the most up-to-date guide for your product, as well as any additional assistance you may require, head online to **help.kogan.com**

kogan.com