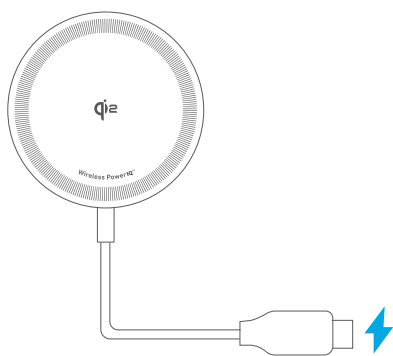


Using Your Product



Note: Use an adapter with an output of 20W or higher to ensure optimal performance.

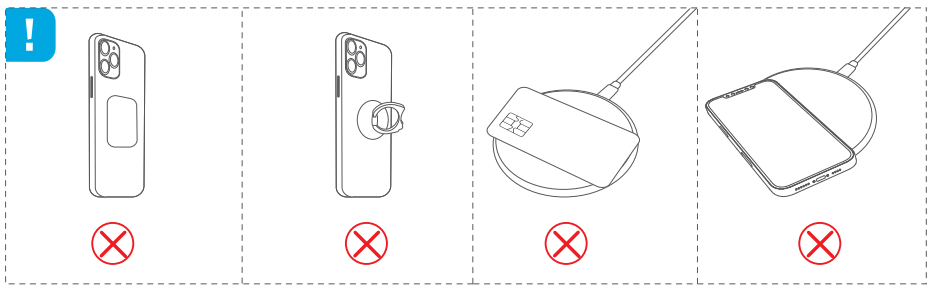
FAQ

Q: Is the product safe to use when it gets warm/hot?



A: It's normal for wireless chargers to warm up slightly, especially during intensive use such as long gaming or streaming sessions. However, it complies with international safety standards, including EN 62368-1 and IEC 62368-1, ensuring safe usage. This product also meets specific safety standards in the USA (UL6238-1), Canada (CSA 62368-1), Europe (EN 62368-1), Japan (J62368-1), Australia and New Zealand (AS/NZS 62368-1), and more.

Q: Can a phone case affect wireless charging?

A: For the best wireless charging experience, we recommend using Apple's official magnetic phone cases. You should avoid cases thicker than 2.5 mm and non-magnetic cases, as they may affect charging efficiency.



Compatible Devices

	iPhone 15 / 14 / 13 / 12 Series
	AirPods (With Wireless Charging Case) And other TWS earbuds supporting wireless charging

Specifications

Input	9V $\overline{=}$ 2.5A
Output	15W Max



Qi ID: 22179
The Qi2 logo is a trademark
of the Wireless Power
Consortium.