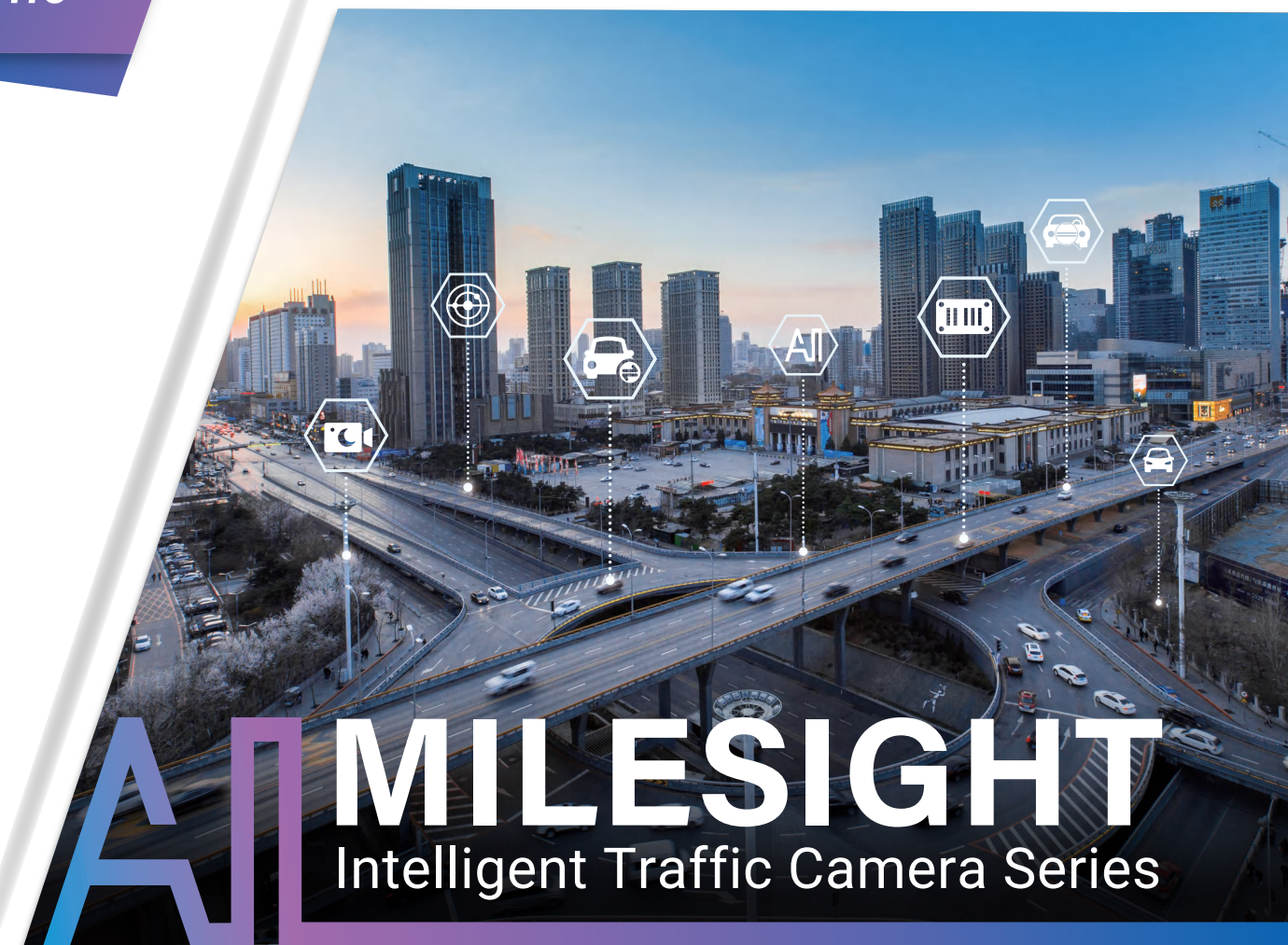




Traffic

- Better Inside, More in Sight ▪



# AI MILESIGHT

Intelligent Traffic Camera Series



Reaching the New Level of Intelligent Traffic

V2.2



Milesight | [www.milesight.com](http://www.milesight.com)

Tel: +86-592-5922772(8801) - Sales +86-592+5922772(8701) - Support

Mail: [sales@milesight.com](mailto:sales@milesight.com) [support@milesight.com](mailto:support@milesight.com)

MILESIGHT CHINA

Tel: +86-592-5922772

Add: Building C09, Software Park Phase III, Xiamen 361024, Fujian, China



[www.milesight.com](http://www.milesight.com)





## Milesight Intelligent Traffic



Parking Management

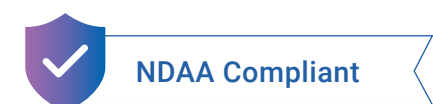
Road Traffic Management

Entrance & Exit Management



The rising of road-related issues, such as traffic congestion, parking problems and road accidents, poses serious challenges to global traffic management agencies and places higher demands on traffic monitoring systems.

Milesight Intelligent Traffic that combines video surveillance with AI, ANPR, 3D Radar and other cutting-edge technologies helps to alleviate these concerns. It helps traffic management agencies systematically and intelligently monitor and understand road users' behavior and gain valuable insights based on real-time data to optimize traffic flow, minimize accident risks, reduce congestion and respond to emergencies more efficiently, which significantly optimizes traffic management and makes transport safer and smoother.





# Milesight Intelligent Traffic Solution

## Manage Traffic with Innovations

### Overview

Featuring powerful LPR functions, Milesight Intelligent Traffic Solution is suited for a variety of application scenarios that require high-performing, easy-to-use and scalable traffic system. The robust solution consists of traffic violation solution, traffic flow control, entrance & exit management and parking lot management, meeting the most needs of traffic planning and management.





# Milesight Intelligent Road Traffic Management

Intelligent Cameras for Road Traffic Monitoring



Imagine a camera that can relieve the burden of manually monitoring traffic by human labor, which can detect, read the plates accurately, measure speed to optimize the traffic flow. Milesight provides such excellent AI Road Traffic cameras that go beyond reading plates, but can realize more advanced usage with AI-empowered LPR algorithm embedded. Plus, Milesight AI Road Traffic camera has further integrated with other cutting-edge technologies such as 3D Radar, supplement light, PTZ to significantly expand its core functionality.

## How Milesight Fulfills Your Needs on Road Traffic Monitoring

Superior Images + Advanced AI Algorithm + Abundant Usage Scenarios



### Failed to capture the fast moving vehicle?

It's always the top concern to capture plates of speedy vehicles in traffic monitoring. Milesight AI Road Traffic cameras adopted the 1/2" large sensor, supplement light and feature 100fps ultra high frame rate with advanced image processing algorithms to capture all clear details of fast moving vehicles during the day and night.

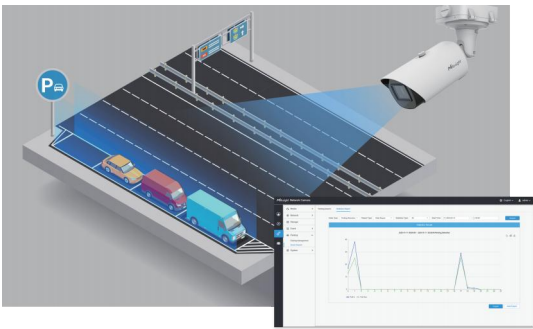


### Can't get clear plates at night?

Poor lighting can be another major challenge in traffic monitoring. However, that won't be an issue for us. Milesight adopts supplement light and develops a dedicated LPR Image Mode to enhance the performance of 24/7 traffic monitoring through both hardware and software.

### Interested in optimizing the roadside parking resources?

Milesight AI Road Traffic Camera detects the occupancy of up to four roadside parking spaces while timing them, provides real-time updates on available spots and recognizes vehicle attributes for optimizing parking management policies.

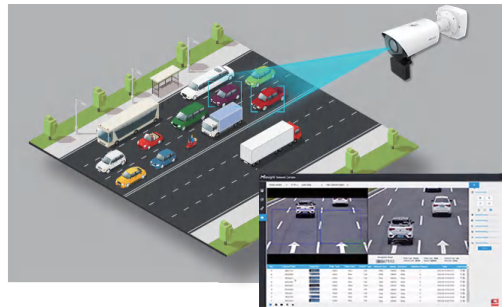


### Struggle with illegal parking?

With Parking violation detection, the cameras can identify illegally parked vehicles and determine if an alert is needed based on vehicle type and duration of stay. This greatly enhances public safety by enforcing parking regulations and reducing congestion on city streets.

### Concerned about the safety hazards associated with speeding?

Based on high-precision 3D radar, Milesight provides accurate real-time speed measurements and easily obtains data on vehicle speeds in different lanes, which greatly improves the efficiency of law enforcement and reduces the accident rate on roadways.



**Traditional LPR Algorithms**  
High rate of false positives

**Milesight AI LPR Algorithms**  
Focus on plates precisely

### Frustrated about misreads and false positives?

Our embedded AI LPR algorithms utilize deep learning neural networks to enhance plate detection and reading accuracy, minimizing false positives and improving performance in challenging conditions. Additionally, the Milesight AI Road Traffic Camera can recognize vehicle attributes like type, brand, color, and plate color, providing a new level of insights for further analysis.

### Capture results only license plates, too limited?

Milesight Intelligent Traffic cameras support Evidence Camera Linkage, linking LPR camera and regular camera for evidence capture, the former focuses on plate capture and the latter on the big picture to obtain all-around evidence, significantly improving the enforcement efficiency.







### Installation difficulty & data transmission delay affect efficiency?

Cutting-edge 5G technology combined with LPR technology enables rapid deployment and improved data transmission, aiding authorities to enforce regulations and optimize traffic flow, providing a flexible and efficient solution for temporary traffic control scenarios or remote suburban areas.

### What about other advanced functions that customers can benefit from?

- Real-time traffic data with detailed vehicle features, including plate, plate color, vehicle type, vehicle color, speed, direction and so on.
- Quick search for the suspected vehicles based on multiple vehicle attributes.
- Information about traffic flows with 24/7 car counting.



### Recommended Models



AI Road Traffic Radar Pro Bullet Plus Camera



AI Road Traffic Pro Bullet Plus Camera



AI Road Traffic Speed Dome Camera



AI Road Traffic Supplement Light Pro Bullet Plus Camera



AI Road Traffic PTZ Bullet Camera



AI Road Traffic PTZ Bullet Plus Camera



AI Road Traffic 5G Pro Bullet Plus Camera



AI Road Traffic Parking Detection Pro Bullet Plus Camera



## 4G Solar-powered Traffic Sensing Camera

A Wire-free Leap Ahead

SC211-NA/EU/AU

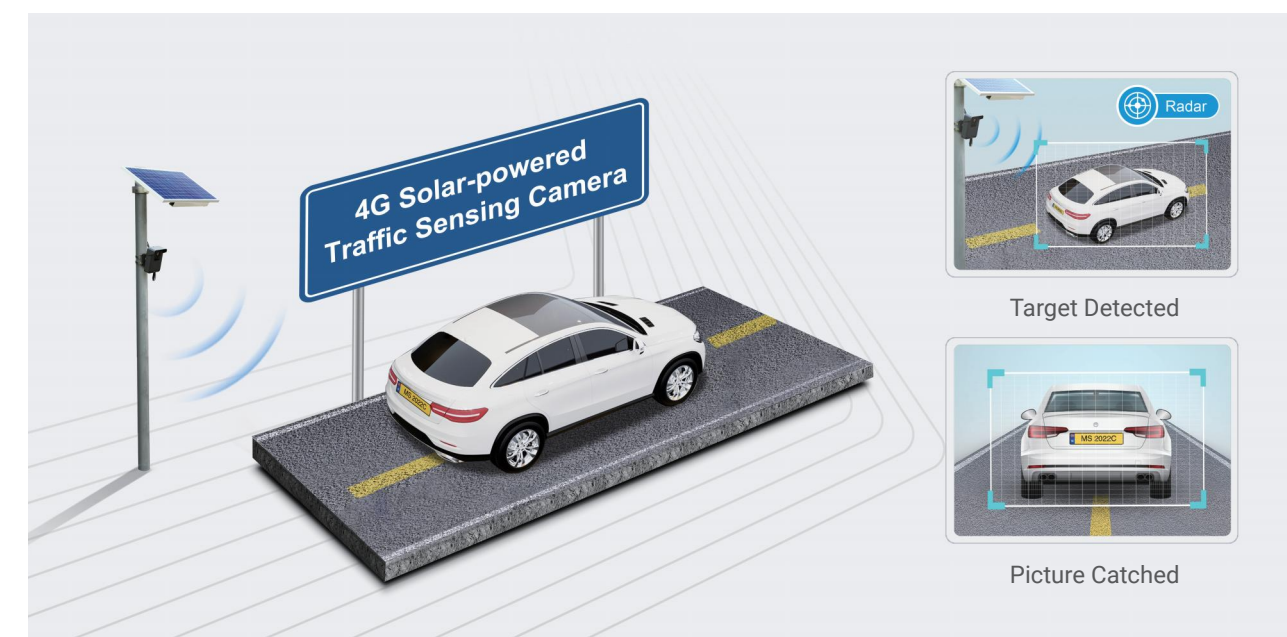


## Your Real-time Evidence Capture Partner

Milesight 4G Solar-powered Traffic Sensing Camera releases you from wires for Intelligent Traffic. It's designed to capture vehicle details, making it an easy way to integrate with any third-party ANPR platform for community, law enforcement and police use, even in remote and isolated locations.

### Sensitive Radar Detector, Real-time Evidence Catcher

Highly accurate radar plus AI algorithm eliminate capture missing even in low light instant notifications and insights for community or police use with any ANPR platform.





Innovations Guarantee a Continuous Use

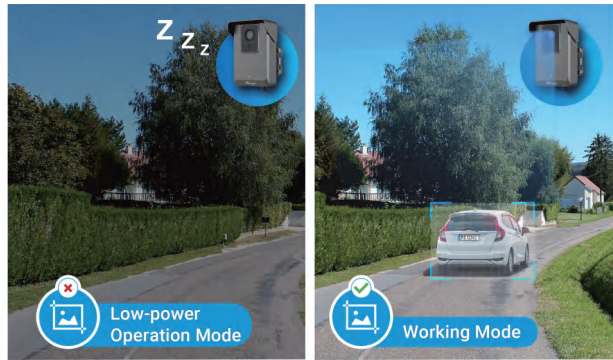
• Solar-powered and More

More than sunshine, Milesight solar-powered camera also can cycle charging to achieve unlimited use with a large capacity battery and USB Type-C charging port to provide abundant power support, ensuring the uninterrupted operation of the camera.



• Low Consumption Efficiency

Normally the camera enters a low-power operation state to conserve energy, the quick start mechanism makes it respond quickly when a vehicle approaches, which greatly reduces the waste of energy while achieving accurate real-time capture.



Excellent Structural Design

The camera is independently developed and designed by engineers and has excellent structural performance.

Differentiated appearance design has better concealment, meanwhile, the anti-theft mounting design ensures the security of the camera. What's more, the 3-axis ball brackets are equipped to adapt to a variety of installation conditions.



Portable to Go Anywhere

Break through the dilemma of troublesome cable, Milesight uses 4G LTE & Solar-powered to enable our camera easy to carry & monitor any area even in remote and isolated locations.



Rural Road



Community Road

Best On-edge Entrance & Exit Management

Leave Safety and Efficiency in Good Hands



Safety and Efficiency Both in Hand

Queuing, waiting, congestion... The mere sight of these words already makes people feel anxious. However, during rush hours, parking lots are often overwhelmed, leaving people to suffer from the annoying situations. In this regard, an effective Entrance & Exit Management is of paramount importance.

In addition to serving as the first line of defense for vehicle safety, entrance & exit management also can significantly improve parking efficiency by reducing additional human labor and easing traffic congestion.

Considering of this, Milesight Best On-edge Entrance & Exit Management has integrated the latest technologies of AI deep learning, cutting-edge LPR and centralized video management, offering the market with a magic bullet that combines all the benefits.





# Enjoy the Ultimate Parking Experience with Milesight Solution



## Waiting Time down Efficiency up

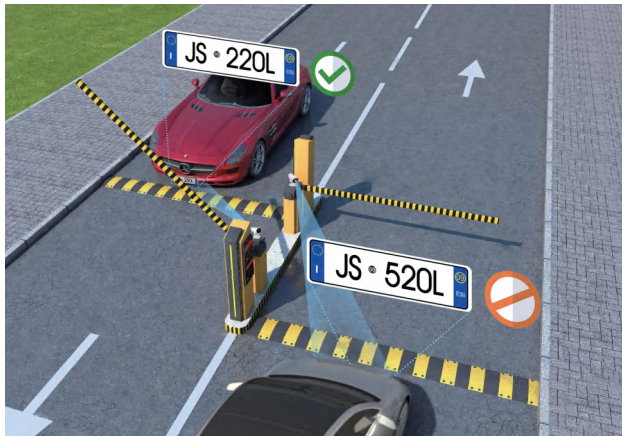
Benefiting from the cutting-edge supplement light LPR camera which can work perfectly with any access control system with built-in Wiegand interface, Milesight Entrance & Exit Management makes a significant contribution for reducing the time wastage.

Plus the powerful central video management of Milesight VMS Enterprise, the solution is ready to maximize entrance & exit efficiency.

## Misreading down Accuracy up

When a vehicle approaches, more than capture license plates numbers, the stunning Milesight Entrance & Exit LPR Cameras can also recognize diverse vehicle attributes, like the type and color of the vehicle, etc.

Besides, no-plate vehicle capture is also available, making details nowhere to escape and significantly elevating the recognition accuracy.



## Risks down Safety up

Utilizing cutting-edge technologies, Milesight Entrance & Exit Management lowers the possibility of congestion, decreasing the risks to preserve your security.

Furthermore, the intelligent Black/White List Management of license plates and the non-blind spot Evidence Camera Linkage guarantee safety to the greatest extent, nipping danger in the bud.

# Technologies Make Simplicity and Ultimate Coexist

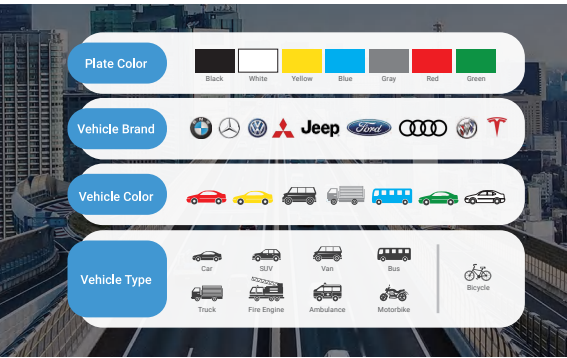
## Embedded AI LPR Algorithms beyond Plate Recognition

With intelligent AI LPR Algorithms, Milesight Entrance & Exit Management can not only recognize vehicles, plates and read characters correctly. Vehicle attributes recognition such as vehicle type, brand, color and plate color can also be recorded to grow your parking business.



## Simpler Video Management, Higher Security

Energized by Milesight VMS Enterprise, Milesight Best On-edge Entrance & Exit Management can provide you with a more complete experience. Recording, collecting, and analyzing -- all in one step, greatly simplifies the process and enhances your safety.



## Better Image Quality for 24/7 Monitoring

With Milesight Entrance & Exit Supplement Light AI LPR Pro Bullet Plus Camera in the solution, which features impressive supplement light and advanced technologies like 140dB Super WDR, all the details are nowhere to escape, enabling precise license plate recognition and effective round-the-clock surveillance.



## Recommended Models



Entrance & Exit AI LPR Pro Dome Camera



Entrance & Exit AI LPR Bullet Camera



Entrance & Exit Supplement Light AI LPR Pro Bullet Plus Camera



Go Far with Milesight VMS Enterprise





# Indoor Parking Guidance Camera

Navigating with Light, Parking with Ease



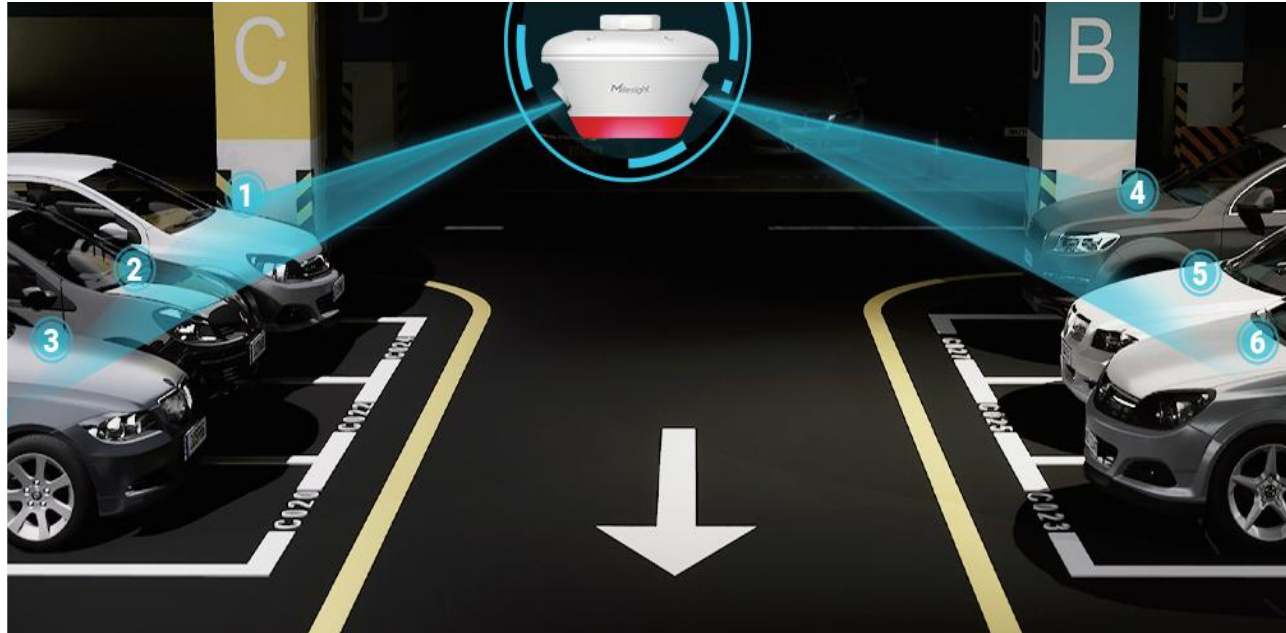
PM3322-E



## Guidance for Hassle-free Parking

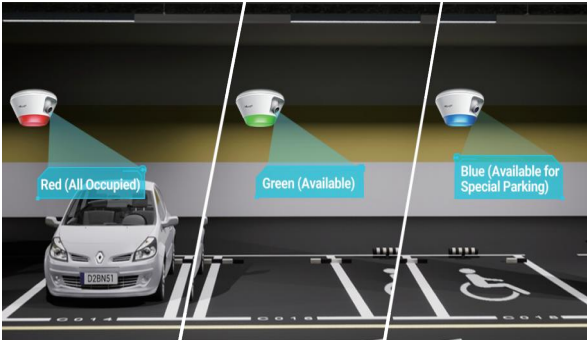
### Efficient AI Parking Management for 6 Spaces

The Indoor Parking Guidance Camera is an innovative technological solution that helps to achieve efficient parking space management. Equipped with dual lenses, it can monitor up to 6 parking spaces simultaneously (with 3 spaces detected on each side), providing accurate data for real-time driver guidance, parking space layout optimization, and keeping track of parking lot usage trends. With efficiency and convenience at its core, it ensures you have a comprehensive understanding of the parking lot.



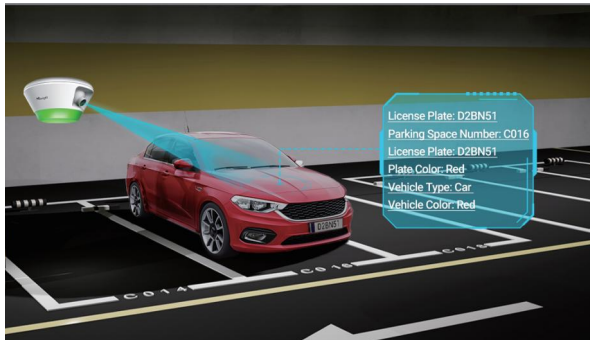
### Indicator for Flexible and Clear Parking Guidance

The Indoor Parking Guidance Camera's indicator lights change depending on the occupancy of the parking space and can be used to provide clear, quick parking guidance. With customizable light colors, the device provides visual cues that make finding available parking spaces a breeze. In addition to regular parking space detection, it also supports special parking spaces, such as handicap spot status detection and guidance, reducing violations and improving the efficiency and service level of parking lot management.



### Intelligent AI-powered LPR Algorithm

Besides acting as a guide, the indoor parking guidance camera is also capable of recognizing license plates in real time, as well as more vehicle attributes, such as vehicle type and color, license plate color, etc. The high-precision AI LPR algorithm generates reliable traffic information, helping to efficiently manage indoor parking lots.



### Perfect for Both Indoor & Semi-open Parking Lots

Equipped with industry-leading IP65-rated weather-proofing, the Indoor Parking Guidance Camera is well protected against adverse impacts to ensure the robust performance, keeping your parking experience seamless and hassle-free.

### Versatile Application Scenarios

With the great availability and high-performing features, Milesight Indoor Parking Guidance Camera is the perfect choice for all types of public indoor parking facilities such as shopping centers, hospitals and office buildings.







# AIoT Indoor Parking Management Suite

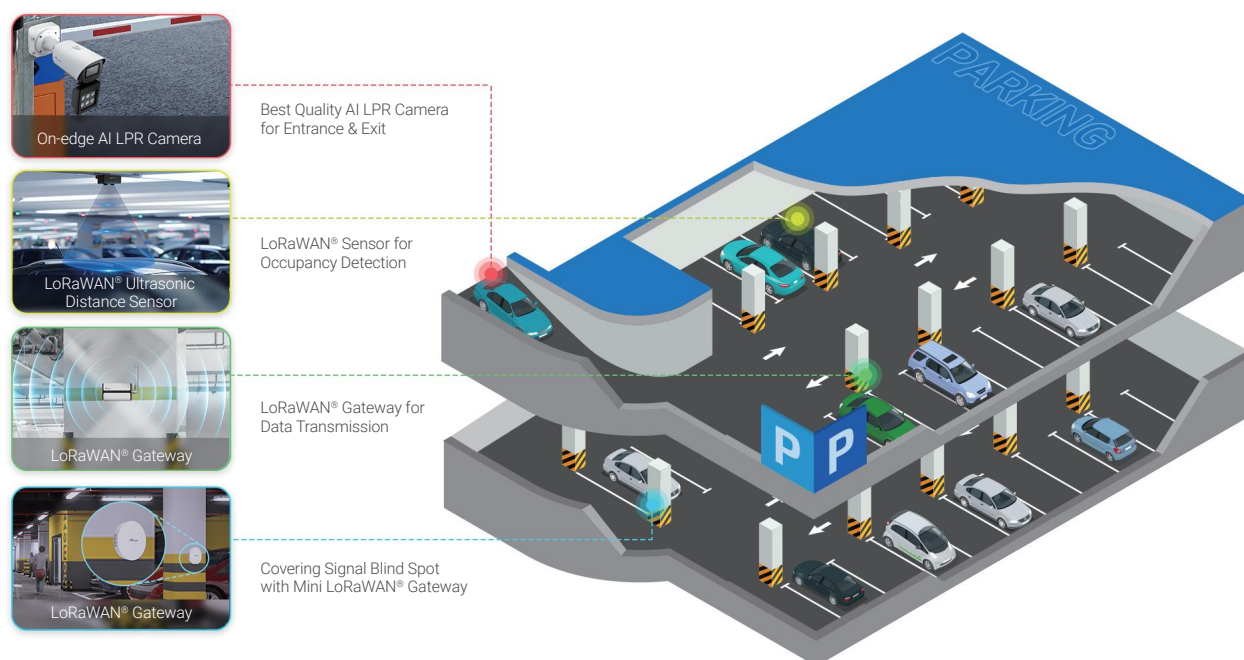
Make Parking Easy and Smart with AIoT



LoRaWAN®

## A Smarter Way to Manage Parking Lot

MileSight is introducing a new power of AIoT to provide a new and smarter way to do parking management. The MileSight AIoT Indoor Parking Management Suite creatively combines AI Deep Learning, On-camera LPR, LoRa and dual-ultrasonic technologies to help optimize the parking process and management more efficiently.



Best Quality AI LPR Camera for Entrance & Exit



LoRaWAN® Sensor for Occupancy Detection



LoRaWAN® Gateway for Data Transmission

## A Number of Reasons to Choose MileSight Solution



### Accurate On-edge ANPR

Designed for demanding LPR applications, MileSight professional LPR camera can recognize the plates rapidly and precisely as vehicle approaches the gate with the dedicated and embedded AI LPR algorithms.



### Easy Deployment

The solution can ensure the most simplified deployment and least installation labor. Thanks to the LoRa-enabled technology, you'll never bother to wire the network cable for sensors, as the devices communicate wirelessly.



### Long Battery Life by Lower Power Consuming

LoRa technology enjoys a lower power consuming that allows LoRaWAN® sensors and gateways to operate steadily with longer battery life, greatly saving maintenance costs.



### More Affordable with Lower Unit Cost

MileSight LoRaWAN® based solution is easy to get started and more affordable because of the low per-unit cost, fitting for more use cases that would like to have parking management solution at lower costs.



### Flexible and Expandable

Integrating our flexible solution into your existing parking system is much easier than you think. And MileSight in-house solution is easy to expand and customize to suit your exclusive needs with open APIs and versatile protocols.



### Environmental-friendly

With so many cutting-edge technologies combined, our greener solution optimizes the parking process which reduces air pollution, CO<sub>2</sub> emission and fuel consumption. Thus a more effective as well as environmental-friendly parking facility can be created.



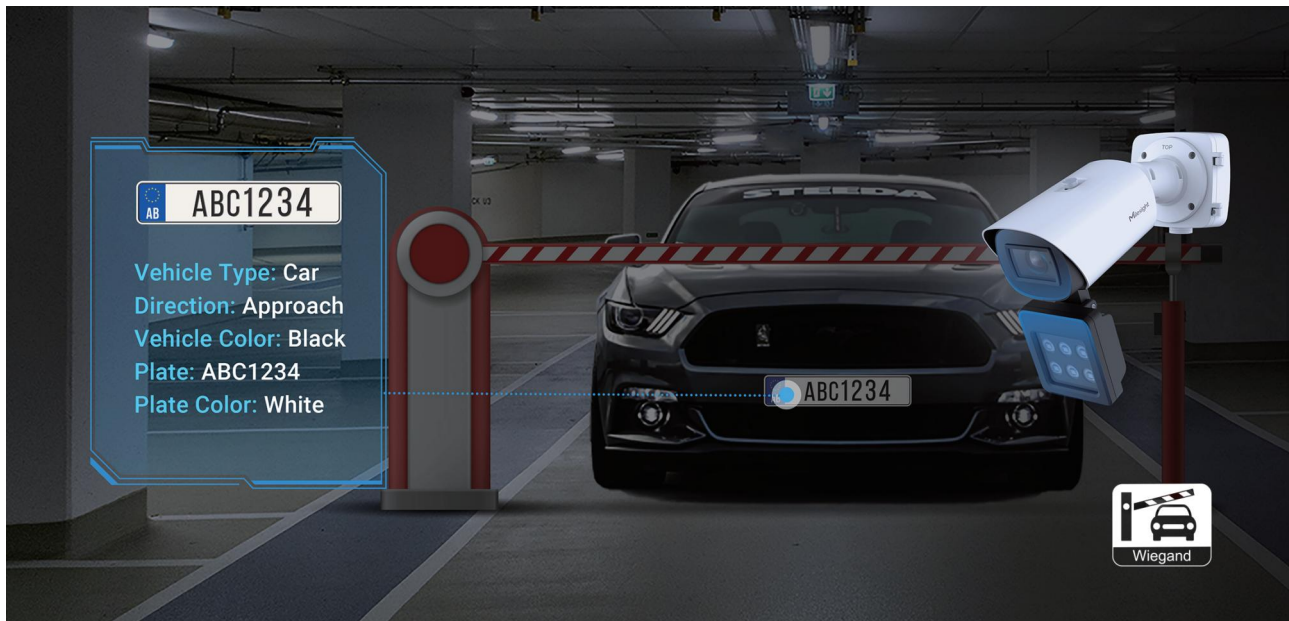
# An Enjoyable Parking Experience with AIoT

## AI Together with LPR

### Embedded AI LPR Algorithms beyond Plate Recognition

In contrast to conventional LPR algorithms, Milesight AI LPR algorithm adopts a deep learning neural network model that has been developed specifically for LPR. This allows the camera to recognize vehicles, plates and read characters correctly.

In addition, our LPR camera can realize AI-based attributes recognition such as vehicle type, vehicle color and plate color, providing more insights to grow your parking business.



### Supplement Light for LPR Cameras Provides Better Image Quality

Milesight incorporates White LED or IR LED supplement light to AI LPR cameras that provide more lighting sources to achieve plate and vehicle recognition in the best quality 24 hours a day, 7 days a week round-the-clock operation for access control.



### Wiegand Protocol Supported for Access Control System Compatibility

Milesight Entrance & Exit Supplement Light AI LPR Camera can be easily integrated with your existing access control system via Wiegand protocol.



## IoT Empowered by LoRa Technology

### What are LoRa and LoRaWAN®?

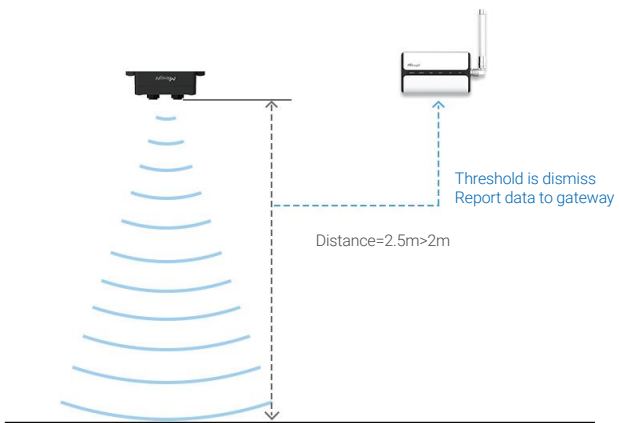
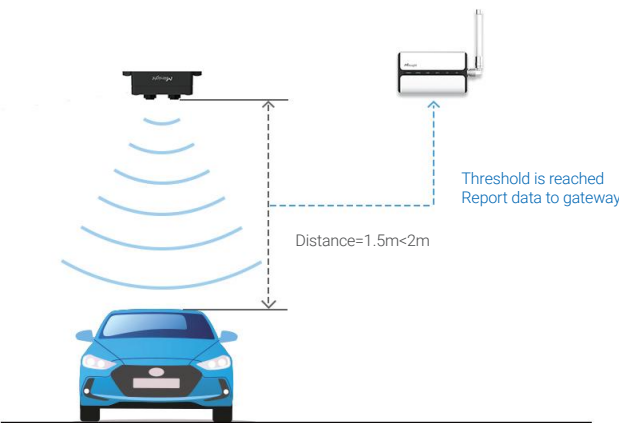
LoRa is a new wireless technology designed specifically for long-range, low-power communications. LoRaWAN® is the protocol built on top of the LoRa modulation, designed to wirelessly connect battery-operated 'things' to the internet.

### How is LoRa Technology Helping Indoor Parking Management?

For indoor parking management applications, LoRa technology allows the occupancy data to be transmitted effectively in the open parking lots and guarantee the least installation and operation costs thanks to the wireless and low power features.

### Dual Ultrasonic Detection LoRaWAN® Sensor

The advanced LoRaWAN® sensor EM310-UDL uses a dual ultrasonic beam with a measurement range from 3cm to 450cm, resulting in an ultra-short blind spot, which provides high-precision parking space occupancy status for parking management systems.



## Recommended Models



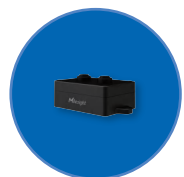
### On-edge ANPR Camera

Entrance & Exit Supplement Light AI LPR Pro Bullet Plus Camera



### Data Transmission for a Wide Area

Semi-Industrial LoRaWAN® Gateway UG63



### Detect Space Occupancy Wirelessly at Low Power

LoRaWAN® Ultrasonic Distance/Level Sensor EM310-UDL



### Covering Signal Blind Spot

Mini LoRaWAN® Gateway UG63



# AI Outdoor Parking Management Solution

Manage Multiple Parking Spaces Smartly and Efficiently



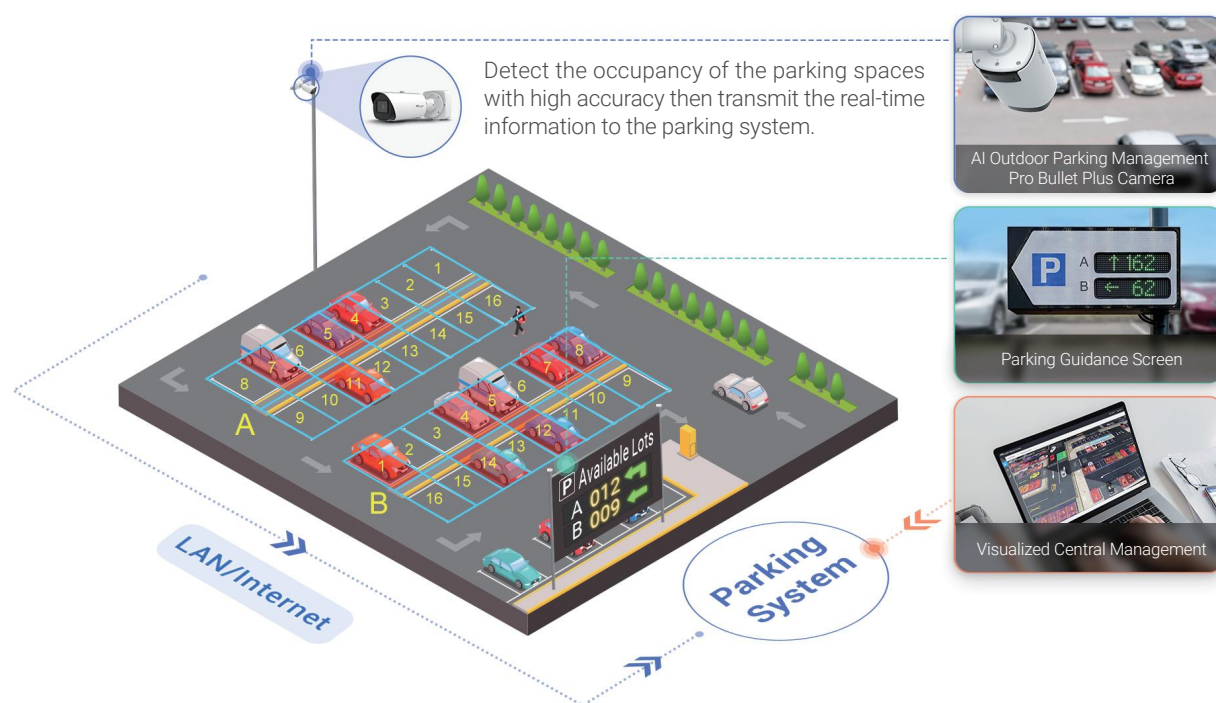
PMC8266-FPC



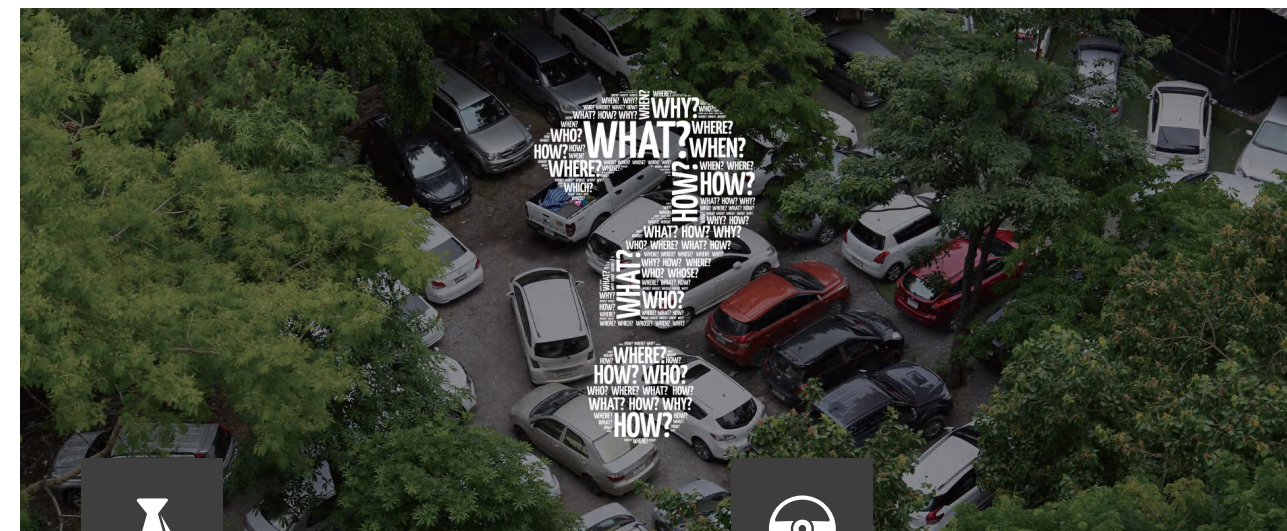
## Lead the Intelligent Way of Outdoor Parking Management

With the advancement of modernization, the present era has witnessed a huge growth in vehicle ownership, particularly in urban areas. Thus, an intelligent outdoor parking solution is essential to provide a better life quality in urban areas as well as plays an important role in the development of smart cities.

In terms of this, Milesight offers an intelligent camera-based AI outdoor parking management solution that tailors the market to ease the facing problems, like the inefficient and costly parking management system for large car parks and difficulties in finding parking spaces for drivers, driving better parking mobility.



## Focus on What Really Matters in Outdoor Parking



### For Operators

- Low-efficiency management of large car park
- Poor utilization of parking spaces
- Unreliable and costly parking management system
- Losing client loyalty

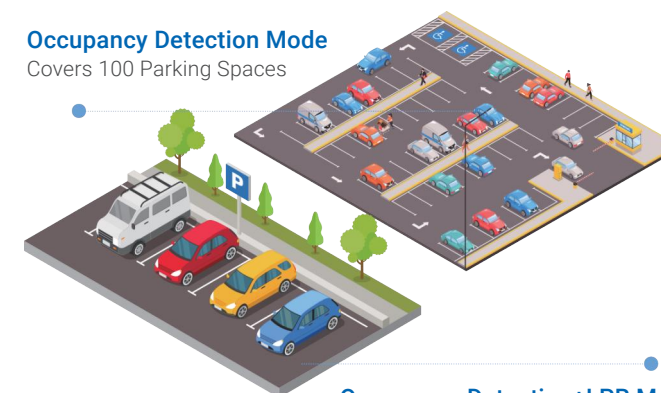
### For Drivers

- Waste of time in finding parking spaces
- More fuel consumption and CO<sub>2</sub> emission during parking spaces seeking
- A frustrated parking experience caused by traffic congestion

## Level up Parking Experience with Milesight Solution

### Occupancy Detection Mode

Covers 100 Parking Spaces



### 1 Camera 2 Detection Modes

- Flexible Switching Between Occupancy Detection & Occupancy Detection+LPR Mode.
- Up to 100 Parking Spaces in Real-time.
- Smart AI LPR Functions.
- High Precision Occupancy Detection.



# 1 Sharp Eye 24/7 Reliable Detection at Any Time

- Embrace Milesight Parking Image Enhancement Technology, Sony 4K 1.8" STARVIS 2 Sensor, and IP67 & IK10.
- Provide a 24/7 accurate and reliable detection with sharp details.



# 1 Integrated Solution 100% High Management Efficiency

- Support CGI/APIs to be easily integrated with your existing parking system, like the smart guidance and visualized central management platform.
- Realize an integrated management solution with real-time parking spaces occupancy detection and super-high efficient parking guidance.



# 1 User-oriented Parking Facility 100% Customers' Satisfaction

- A smarter and user-oriented outdoor parking facility empowered by AI deep learning.
- Build up your customers' satisfaction and loyalty.
- Bring repeat business and increase your turnover.



# 1 Joyful Parking Experience for Drivers 100% High Parking Efficiency

- Quick parking by smart parking guidance with near-zero traffic congestion.
- Fuel savings and emission levels reducing.



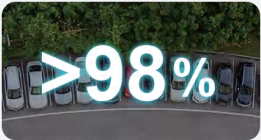
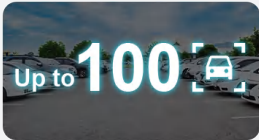
# Boost Outdoor Parking Management with Milesight Innovations

## Intelligent AI Parking Detection

**Occupancy Detection** based on AI algorithm can realize simultaneous detection and management of up to 100 parking spaces with up to 98% detection accuracy.

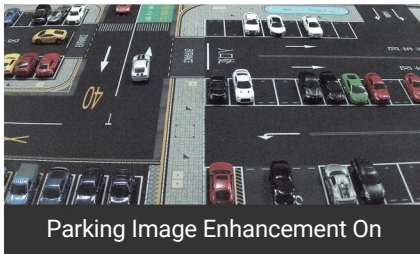
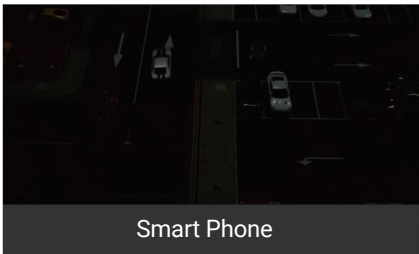
**Parking Detection with LPR** based on AI LPR algorithm can realize simultaneous detection and management of up to four parking spaces, and identification of information of parked vehicles.

These two parking management modes greatly help guide parking and realize more efficient and intelligent parking management.



## Parking Image Enhancement Technology

Milesight innovatively adopts the leading Parking Image Enhancement Technology, which is based on image frame accumulation, to obtain images of unsurpassed clarity in almost dark conditions. No scare about the night, no missing any detail with reproducing sharp images, enabling high-accuracy detection round-the-clock.



## Visualized Management and Flexible Configuration

Milesight AI Outdoor Parking Management Camera brings the visualized management with the red overlay of the occupied parking spaces, a more intuitive way to detect the entire parking area, facilitating a visualized central management by integrating the camera to your parking system. Moreover, the flexible configuration just makes the start of intelligent outdoor parking management a piece of cake.



## Impressive High Compatibility

To maximize the usability and compatibility, the AI Outdoor Parking Management Camera supports CGI/APIs, which allows the easy open integration with third-party platforms. The network protocol such as HTTP(s) offers a wide range of options for data processing. The parking information is transmitted to the third-party parking system to help form a complete set of solutions, guide the driver to find the parking space quickly and realize intelligent management.



## Discover Our Solution



### AI Outdoor Parking Management Pro Bullet Plus Camera

- AI-powered Parking Space Detection Algorithms
- Flexible Switching between Two Detection Modes
- Smart LPR Functions
- >98% Recognition Rate
- 4K Ultra High Resolution Image Capture
- Parking Image Enhancement Technology
- 1/1.8" STARVIS 2 Sensor for Better Night View
- 3.6~10mm Motorized Lens
- IP67&IK10
- Extensive 3rd Party Compatibility

### Back-end Integration of Mileight Intelligent Traffic

Mileight VMS/NVR/CMS

Closed-loop Platform Powers an Easy and Powerful Traffic Solution



## VMS + ANPR Integration

Based on years of R&D experience in security industry, Mileight is capable of providing comprehensive and highly-integrated security solutions with front-end devices and back-end management software. Mileight VMS Enterprise is a robust and centralized software platform that can work well with Mileight LPR cameras to get recognized license plates, detected speed and achieve advanced functions for entrance & exit management or intelligent traffic monitoring solutions.

### Get Intuitive Liveview and Accurate ANPR Results

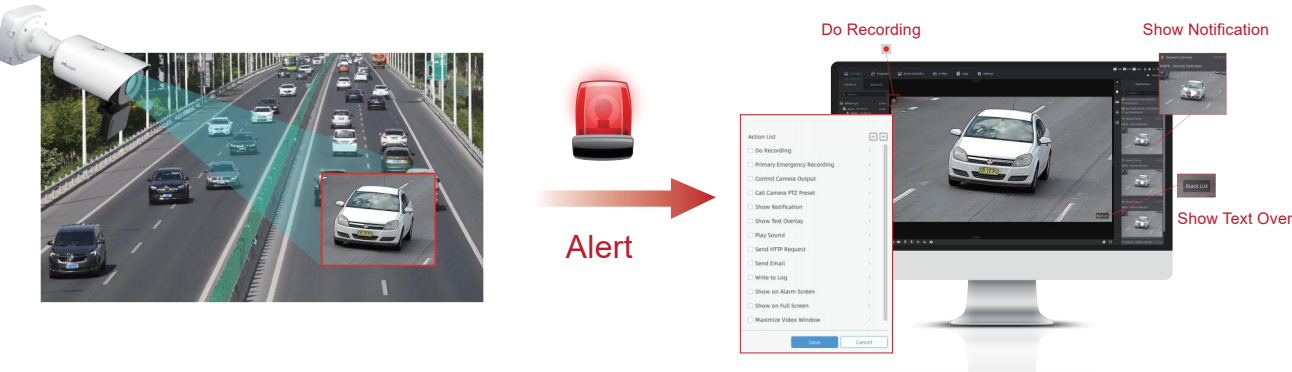
Featuring high-performing ANPR functions and the dedicated interface, Mileight VMS Enterprise provides the most user-friendly all-in-one ANPR solution that fully integrates with LPR cameras.

### Search and Locate Vehicles Faster and Smarter

The convenient ANPR Search enables operators to quickly search and locate the associated videos based on target vehicle's features, such as vehicle color, plate color, plate number, vehicle type and direction.

### Various Events & Alarm Actions

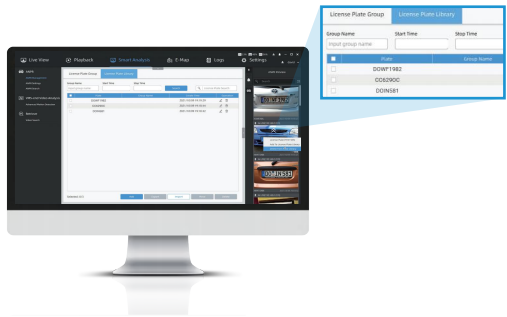
In Mileight VMS Enterprise, users may easily set various events rules and the corresponding alarm actions to maximize traffic safety and productivity. Taking Black/White List Event as an example, if a plate is recognized as the one on the pre-defined black list, related event actions will be triggered based on the pre-configured Black/White List alarms.





Manage Lists Flexibly to Level up ANPR Management

- Add recognized license plates to a white/black list easily in ANPR preview
- The plates that are in accordance with customized rules will be added to the group automatically
- Support configuring the rules and actions for each group separately



Radar Data Integration for Traffic Flow Control

- Receive real-time detection data such as vehicle speed and direction from Milesight AI Road Traffic Radar Camera
- Get instant alerts in VMS when a vehicle drives over-speed or drives in the wrong direction
- Monitor and take actions basing on the alarm triggered by counting data that exceeds the limit



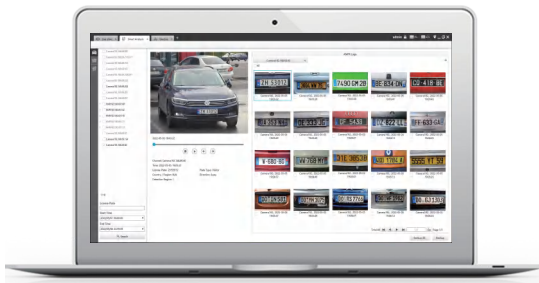
NVR + ANPR Integration

Defined as the Enterprise ANPR management system, Milesight NVR becomes the central management site to easily monitor the traffic, including the real-time preview of the car plates, smart analysis and other more detailed settings.



CMS + ANPR Integration

Milesight CMS provides a total solution for Milesight LPR cameras and NVRs, to achieve powerful ANPR management more conveniently. With high-efficient management performance, Milesight CMS is ideal for receiving plate recognition results, managing events triggered by plates on blacklists or whitelists, etc., realizing a superior experience in such a centralized system.



Precise Capture

Designed for a wide range of applications in traffic monitoring, Milesight Intelligent Traffic cameras are capable of achieving extremely high-quality and reliable license plate capturing in high accuracy. With the powerful capturing performance, Milesight Intelligent Traffic cameras can deliver clear and detailed images of capture results, facilitating effective license plate recognition applications in various scenarios.

Superior Image Quality for 24/7 Traffic Monitoring

- LPR Image Mode
- Integrated Supplement Light



- HLC (Highlight Compensation)
- 0.002Lux Starlight



Excellent Capture Performance at High Speed and Accuracy

**200km/h**  
Recognizable Speed

**100fps**  
High Frame Rate

**>98%**  
High Recognition Accuracy

License Plate Serial Format

**4**  
4 Detection Regions



# AI-empowered LPR

When AI meets LPR, a whole new world of possibilities opens up, as the camera can not only achieve highly accurate recognition in challenging lighting and environmental conditions, but also identify vehicle features that can then be searched by LPR Smart Search function for handy traffic monitoring.

## Embedded AI LPR Algorithm

- Based on AI deep learning neural network
- Detect and recognize vehicles, plates and characters precisely in real-time
- Deal better with smudges, plate variation, lighting changes or different angles compared to traditional LPR algorithm



## AI-based Vehicle Attributes Recognition

Besides the high accuracy license plate recognition powered by embedded AI LPR algorithm, Milesight Intelligent Traffic camera can also realize AI-based attributes recognition such as vehicle type, brand, vehicle color and plate color, helping gain a new level of insights for further analysis.

### Vehicle Type

- Motorized Vehicle

Car

SUV

Van

Bus

Truck

Fire Engine

Ambulance

Motorbike
- Non-motorized Vehicle

Bicycle

### Vehicle Brand

- Audi

Toyota

Buick

Mercedes-Benz

BMW

Honda

Volkswagen
- Ford

Jeep

Lexus

Mazda

Maybach

Mitsubishi

Tesla

### Vehicle Color



### Plate Color

- Black

White

Yellow

Blue

Gray

Red

Green

# Integrated 3D Radar



Milesight innovatively combines 3D Radar, AI and LPR technologies to create a camera that can not only identify vehicles and read plates accurately, but also precisely provide extra real-time data of vehicle position, direction and speed, etc. The all-in-one Road Traffic Radar Camera is easy to install as the 3D radar module is already integrated into the camera directly, realizing the hassle-free traffic flow monitoring solution.

## Excellent Radar Capabilities for Road Monitoring

Adopting 60GHz FMCW radar, Milesight 3D radar technology allows Milesight AI Road Traffic Radar Camera to cover 4 lanes and 32 vehicles detection at one time and detect the high driving speed up to 200km/h with just a compact size of radar module.



- 200km/h  
Detection Speed

90m  
Detection Distance

2 Vehicle  
Directions

4 Lanes  
Monitoring

32 Vehicles  
Detected at One Time

Vehicle  
Counting  
+1



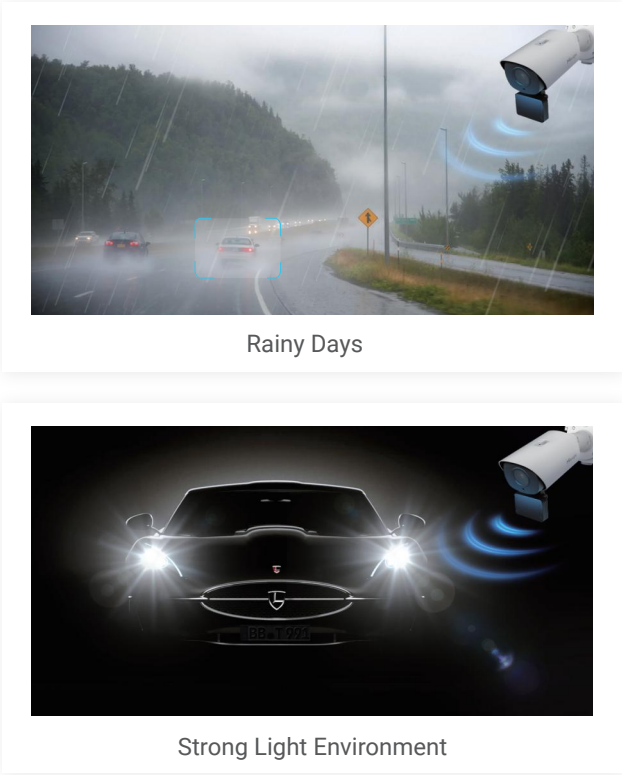
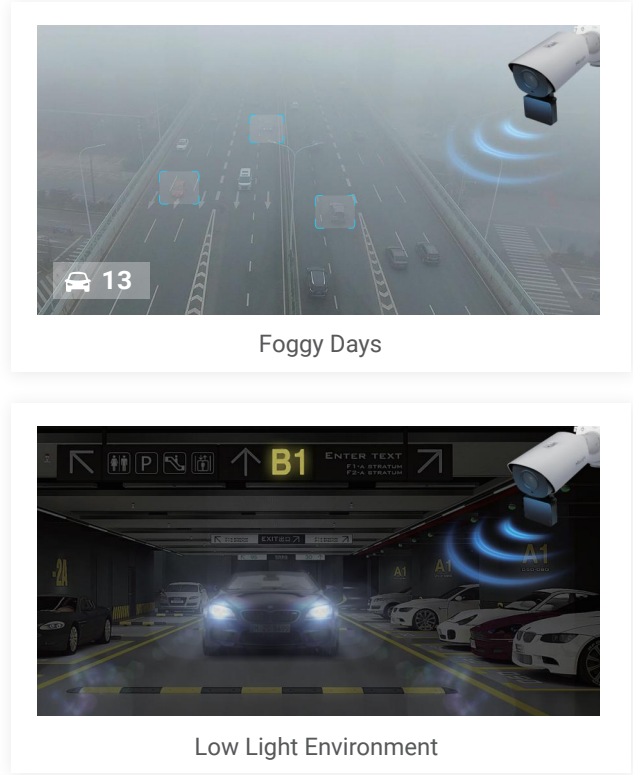
### 3D Radar Localization

The 3D radar provides a three-dimensional view of range, altitude and direction which can precisely locate the vehicle compared to conventional radar technology, greatly enhancing the usability of Milesight ANPR solutions with visualized vehicle position.



### Accurate Detection for All Weather Conditions

Furthermore, the 3D radar enjoys higher environmental adaptability that can offer precise information in any weather conditions, at any time of day or night, greatly lowering the cost of false alarms.

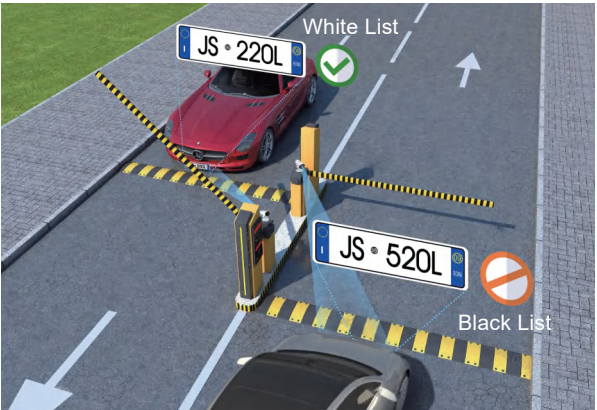


## Plate Management & Search

Besides exceptional capture and recognition performance, Milesight Intelligent Traffic cameras feature on-camera plate management for black/white lists which can also be configured based on schedules. And LPR Smart Search enables security operators to search and quickly find relevant videos for further investigation.

### Black/White List Management

Milesight Intelligent Traffic cameras can automatically identify license plates based on the embedded black/white lists, allowing for efficient entrance & exit control by taking instant actions according to the plate types.



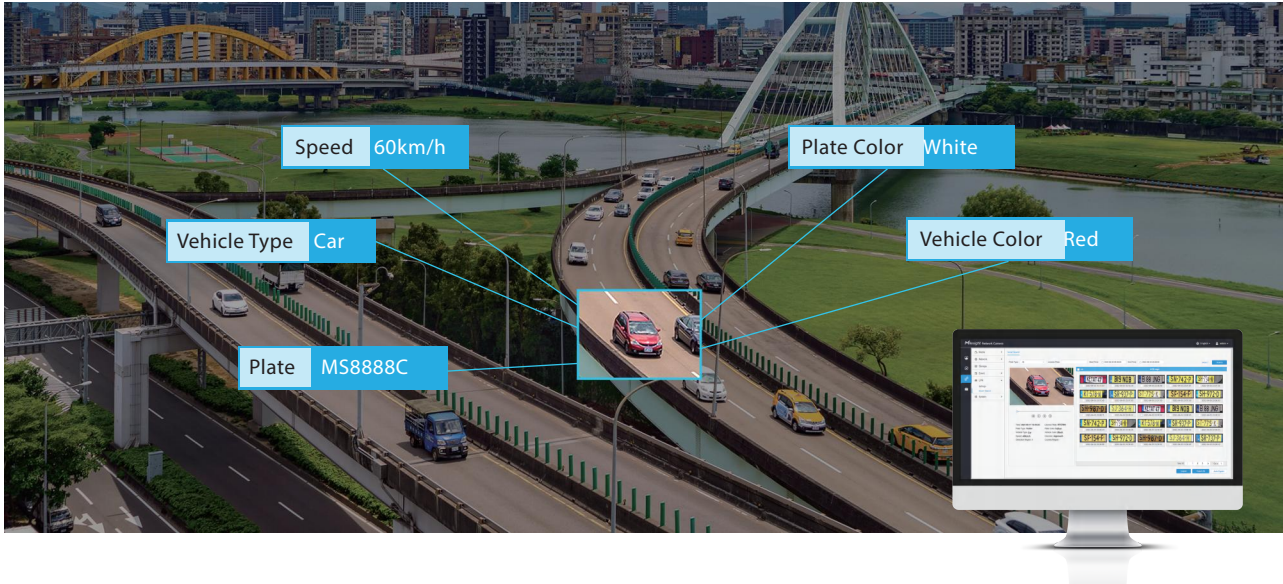
### List Scheduling Management

Milesight Intelligent Traffic cameras provide accurate identification and support list scheduling management, ensuring extremely flexible and customizable gate control with enhanced security to fulfill the management needs for different days and time periods.



### LPR Smart Search

With Milesight LPR Smart Search, relevant videos can be found quickly by searching for only a portion of the target suspect vehicle's attributes, such as vehicle color, plate color, plate number, vehicle type, direction and etc., ensuring efficient event investigations and intelligent traffic monitoring.



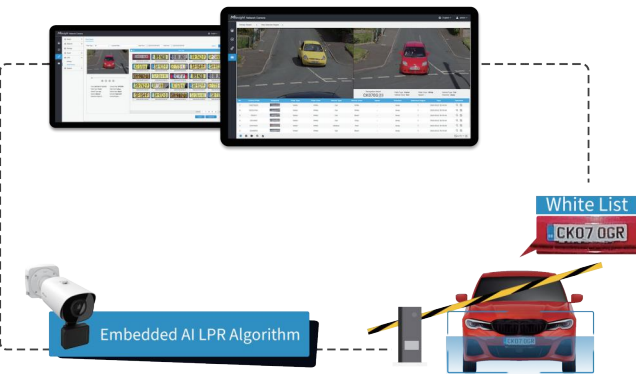


# Flexible Deployment

Milesight is committed to bringing to market the most user-friendly and high-performing products and solutions. For applications on traffic monitoring, Milesight offers a number of options to guarantee the flexible deployment of Milesight Intelligent Traffic systems.

## Stand-alone LPR Solution

With the built-in AI LPR algorithm and embedded black & white lists, Milesight Intelligent Traffic cameras enable to achieve stand-alone solutions for license plate recognition, realizing the fast implementation for scenarios such as gates or barriers controlling in high efficiency and accuracy.



## Closed-loop ANPR Solution

Milesight Intelligent Traffic cameras can well work with Milesight own back-ends including Milesight NVR, CMS and Milesight VMS Enterprise to form completely closed-loop ANPR solutions. The highly integrated system guarantees a smooth experience in traffic and road management, as well as entrance & exit management.



## 3rd Integration with CGI/APIs

To maximize the usability, Milesight Intelligent Traffic camera also offers various CGI/APIs and supports interfaces and protocols like Wiegand, TCP, HTTP, MQTT, etc., which allow the easy open integration with third-party VMS or platforms, realizing solutions such as traffic management, toll collection, and entrance & exit management.



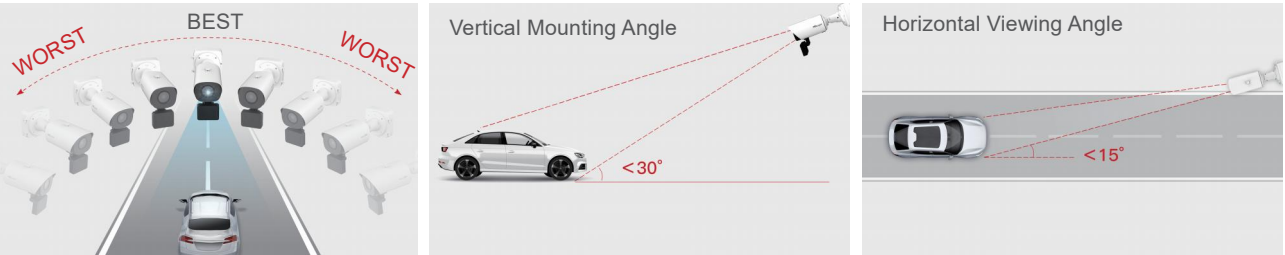
# Easy Setup

## Start Milesight Intelligent Traffic Camera Easily

Milesight provides a series of clear and detailed installation guides as well as tutorial videos to ensure easy installation and configuration of Intelligent Traffic cameras. With the most user-friendly user interface, you can get the LPR configuration done efficiently, saving time and learning costs significantly.

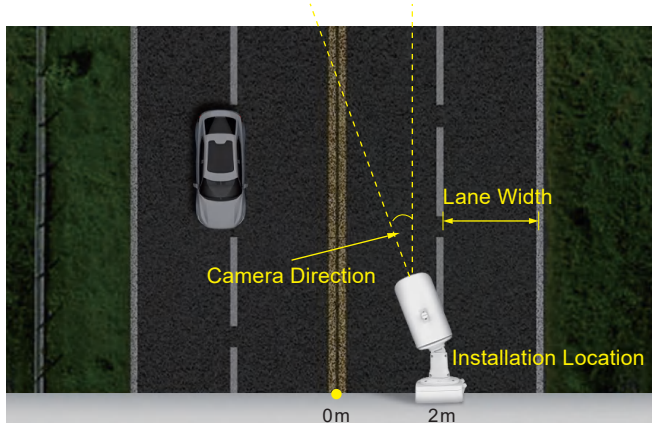
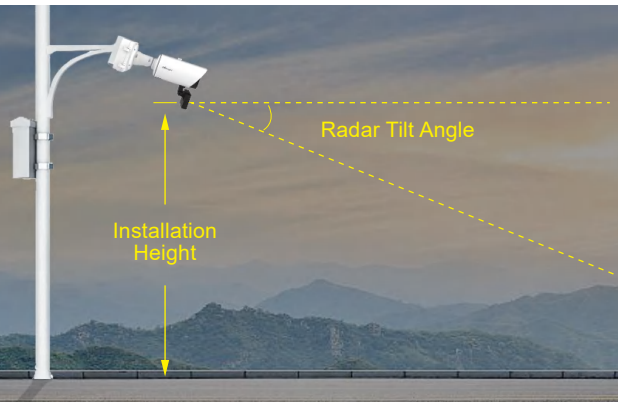


For the best possible license plate capture, installing the camera in a proper location as suggested below is highly recommended.



## Simple Steps for Radar Camera Configuration

After installing AI Road Traffic Radar Camera in an appropriate position, users will just need to fill in a few parameters to get the configuration done easily. By filling in parameters such as Installation Height, Radar Tilt Angle, Camera Direction and Trigger Distance, the results of AI Road Traffic Radar Camera detected and recognized will be precisely matched to corresponding vehicles in multiple lanes, enabling efficient and accurate traffic monitoring.





# Broad Regions and Countries Support

Backed up by strong R&D strength and accumulated expertise in LPR applications, Milesight Intelligent Traffic solution can be well applied to broad regions and countries worldwide. We've now covered a wide range of areas including:



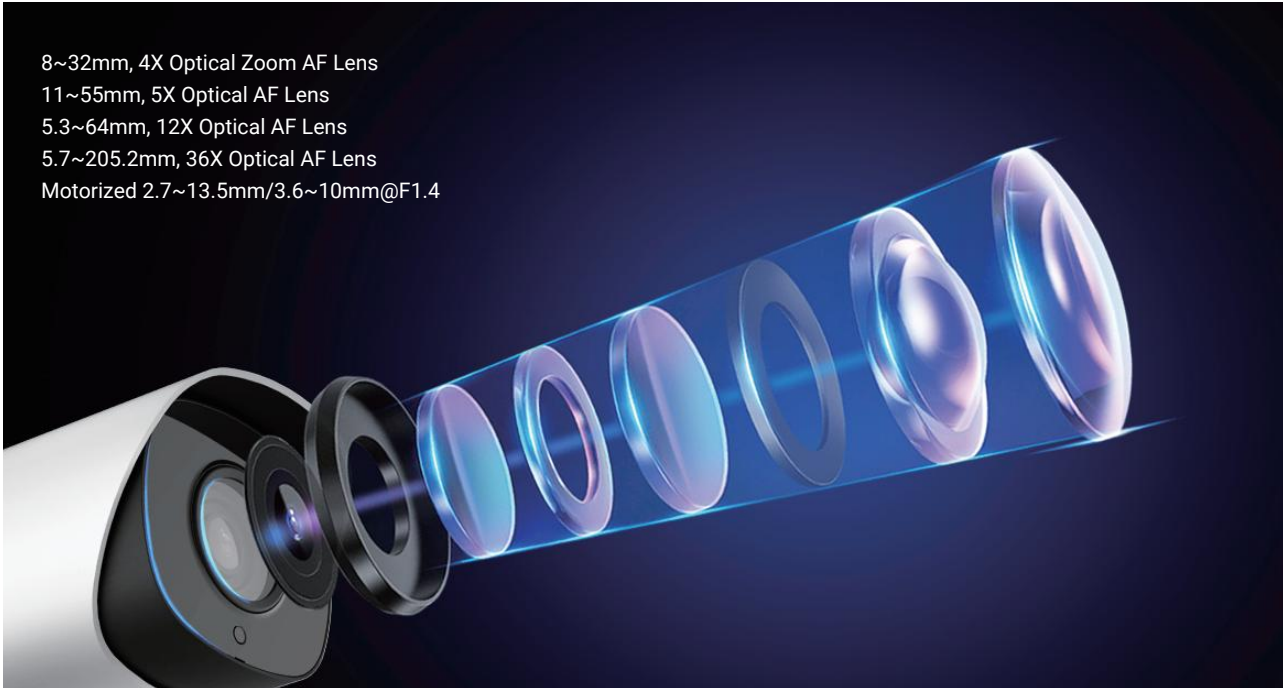
State Name	Country Name				
Asia	Armenia	China	Hong Kong (China)	India	Indonesia
	Israel	Japan	Kazakhstan	Kyrgyzstan	Macau (China)
	Malaysia	Philippines	Singapore	South Korea	Taiwan (China)
	Tajikistan	Thailand	Turkmenistan	Uzbekistan	Vietnam
	Austria	Albania	Azerbaijan	Belarus	Belgium
	Bosnia and Herzegovina	Bulgaria	Croatia	Czech	Cyprus
Europe	Denmark	Estonia	Finland	France	Georgia
	Germany	Greece	Hungary	Italy	Iceland
	Ireland	Latvia	Lithuania	Luxembourg	Macedonia
	Malta	Moldova	Montenegro	Netherlands	Norway
	Poland	Ukraine	Slovakia	Switzerland	Russian
	Turkey	Portugal	Romania	Serbia	Slovenia
	Spain	Sweden	United Kingdom	Vatican City	
	Bahrain	Kuwait	Iran	Iraq	Oman
	Qatar	Saudi Arabia	United Arab Emirates		
	Canada	Mexico	United States		
North America	Argentina	Brazil	Chile	Ecuador	Uruguay
South America	Angola	Algeria	South Africa	Morocco	
Africa	Australia	New Zealand			
Oceania					

# Various Models Available

Boasting multiple models including Bullet, Dome, PTZ and Radar models, Milesight covers a wide range of intelligent traffic products from entry level to advanced to meet various requirements. Multiple applications like highways, intersections, parking lots, etc. are able to well safeguarded by the matched cameras.

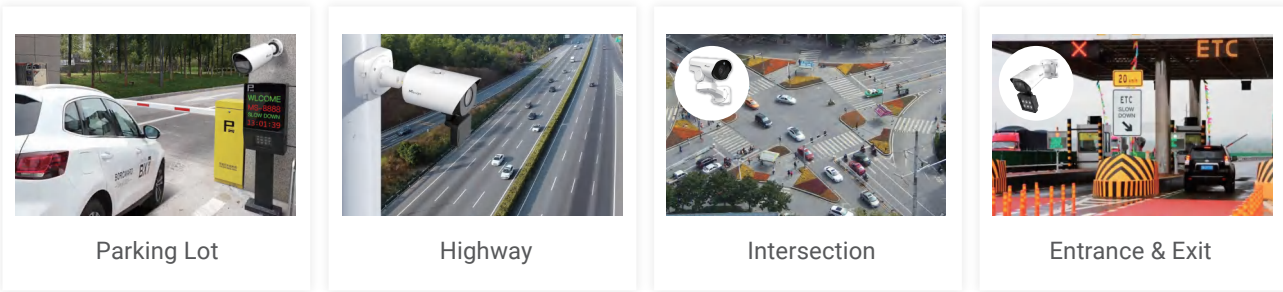
## Diversified Lens Options

Cameras equipped with motorized zoom & focus lens allow remote control of focal length, iris and focus through the use of a lens controller, which are perfect for long distance surveillance in areas such as parking lots, highways and ports. And auto focus lens helps zoom up to distant objects while still maintaining the clarity, delivering high quality video over the entire zoom image.



## Multiple Installation Modes

Additionally, various installation modes including pole-mount, wall-mount and pendant mount, are ideal for the better monitoring of different application scenarios. Having a variety of good mounting options to choose from enables you to place the camera in convenient locations and more easily deploy cameras where you need.





# Milesight Intelligent Traffic Cameras

### Road Traffic Management



AI Road Traffic Pro Bullet Plus Camera



AI Road Traffic Radar Pro Bullet Plus Camera



AI Road Traffic PTZ Bullet Camera



AI Road Traffic PTZ Bullet Plus Camera



AI Road Traffic Supplement Light Pro Bullet Plus Camera



AI Road Traffic 5G Pro Bullet Plus Camera



AI Road Traffic Speed Dome Camera



AI Road Traffic Parking Detection Pro Bullet Plus Camera




4G Solar-powered Traffic Sensing Camera


### Entrance & Exit Management



Entrance & Exit AI LPR Bullet Camera



Entrance & Exit Supplement Light AI LPR Pro Bullet Plus Camera



Entrance & Exit AI LPR Pro Dome Camera

### Parking Management



Indoor Parking Guidance Camera



AIoT Indoor Parking Management Suite





AI Outdoor Parking Management Camera

## Milesight Road Traffic Management








- KEY FEATURES
- Advanced AI LPR Algorithm
  - Traffic Flow Statistics and Analysis
  - Evidence Camera Linkage
  - No-plate Vehicle Detection
  - Reverse Driving Vehicle Detection
  - LPR Smart Search Function
  - License Plate Administration
  - Superior Image Quality
  - Maximized Flexibility


		AI Road Traffic Pro Bullet Plus Camera		
Model		TS4466-X4RPE (4MP)	TS2966-X12TPE(2MP)	TS8266-X4PE(4K)
Appearance				
Image Sensor		1/1.8" Progressive Scan CMOS	1/2.8" Progressive Scan CMOS	1/1.8" Progressive Scan CMOS
Min. Illumination		Color: 0.002Lux@F1.6 B/W: 0Lux with IR on	Color: 0.005Lux@F1.6 B/W: 0Lux with IR on	Color: 0.009Lux@F1.6 B/W: 0Lux with IR on
WDR		140dB Super WDR		120dB Super WDR
Lens		8~32mm, 4X Optical Zoom	5.3~64mm, 12X Optical Zoom	8~32mm, 4X Optical Zoom
Field of View		H44°~H13°/D51°~D15°/V25°~V7°	H61°~H5°/D69°~D5°/V36°~V2°	H44°~H13°/D51°~D15°/V25°~V7°
Road Traffic Management	Max. Vehicle Speed	200km/h		
	Recognition Accuracy	>95%		
	Coverage	Support simultaneous detection of 4 regions		
	Country Region Supported	More than 80 countries and regions		
	Illumination Distance	Up to 70m during the day; Up to 35m during the night with illumination		
	Attributes Identification	Plate Color, Vehicle Type, Vehicle Color, Vehicle Brand, No-plate Vehicle Capture		
	Smart Traffic Function	Evidence Camera Linkage, Vehicle Counting Based on Vehicle Type, Specific Lane Management		
Interface		Audio I/O, Alarm I/O*2, PoE (802.3at), DC 12V		
Compatibility		API, HTTP, TCP, ONVIF Profile G & S & T		


		AI Road Traffic Radar Pro Bullet Plus Camera		
Model		TS4466-X4RVPE (4MP)	TS2966-X12TVPE(2MP)	TS8266-X4VPE(4K)
Appearance				
Image Sensor		1/1.8" Progressive Scan CMOS	1/2.8" Progressive Scan CMOS	1/1.8" Progressive Scan CMOS
Lens		8~32mm, 4X Optical Zoom	5.3~64mm, 12X Optical Zoom	8~32mm, 4X Optical Zoom
Field of View		H44°~H13°/D51°~D15°/V25°~V7°	H61°~H5°/D69°~D5°/V36°~V2°	H44°~H13°/D51°~D15°/V25°~V7°
Road Traffic Management	Max. Vehicle Speed	200km/h		
	Recognition Accuracy	>95%		
	Coverage	Support simultaneous detection of 4 regions		
	Country Region Supported	More than 80 countries and regions		
	Illumination Distance	Up to 70m during the day; Up to 35m during the night with illumination		
	Attributes Identification	Plate Color, Vehicle Type, Vehicle Color, Vehicle Brand, No-plate Vehicle Capture, Vehicle Direction Detection, Speed Detection, Traffic Flow Detection		
	Smart Traffic Function	Evidence Camera Linkage, Vehicle Counting Based on Vehicle Type, Specific Lane Management		
Radar	Working Frequency	60GHz, 61~62GHz		
	Capture Rate	>99% (Traffic jam >95%)		
	Lane Coverage	1~4 Lanes (Recognition ≥95% individually)		
	Tracking Target	Up to 32		
	Speed Detection Range & Accuracy	±5km/h~±200km/h; ±0.36km/h(Accuracy)		
	Detection Distance & Accuracy	Up to 90m; ±0.4m(Accuracy)		
	Installation Height	2~7m		
Interface		Audio I/O, Alarm I/O, PoE (802.3at), DC 12V		
Compatibility		API, HTTP, TCP, ONVIF Profile G & S & T		





AI Road Traffic Supplement Light Pro Bullet Plus Camera					
Model		TS4466-X4RWPE /W (4MP)	TS4466-X4RWPE /R (4MP)	TS8266-X4WE /W (4K)	TS8266-X4WE /R (4K)
Appearance					
Image Sensor		1/1.8" Progressive Scan CMOS			
Min. Illumination		Color: 0.002Lux@F1.6 B/W: 0Lux with IR on			
WDR		140dB Super WDR			
Lens		8~32mm, 4X Optical Zoom			
Field of View		H44°~H13°/D51°~D15°/V25°~V7°			
Road Traffic Management	Max. Vehicle Speed	200km/h			
	Recognition Accuracy	>95%			
	Coverage	Support simultaneous detection of 4 regions			
	Country Region Supported	More than 80 countries and regions			
	Illumination Distance	Up to 70m during the day; Up to 45m during the night with illumination			
	Attributes Identification	Plate Color, Vehicle Type, Vehicle Color, Vehicle Brand, No-plate Vehicle Capture			
	Smart Traffic Function	Evidence Camera Linkage, Vehicle Counting Based on Vehicle Type, Specific Lane Management			
Illuminator	Supplement Light	White LED Light	IR LED Light	White LED Light	IR LED Light
	Light Bead	6 (For White LED Light)	9 (For IR LED Light)	6 (For White LED Light)	9 (For IR LED Light)
	Light Control	Auto/Always On/Off/Customize			
Interface		RS485, Audio I/O, Alarm I/O*2, Ethernet Port, DC 12V			
Compatibility		API, HTTP, TCP, Wiegand Protocol, ONVIF Profile G & S & T			

AI Road Traffic 5G Pro Bullet Plus Camera			
Model		TS2866-X4TGPC(2MP)	
Appearance			
Image Sensor		1/2" Progressive Scan CMOS	
Lens		8~32mm, 4X Optical Zoom	
Field of View		H44°~H13°/D51°~D15°/V25°~V7°	
Min. Illumination		Color: 0.002Lux@F1.6 B/W: 0Lux with IR on	
WDR		140dB Super WDR Pro	
Min. Illumination		H.265*/H.265(HEVC)/H.264*/H.264/MJPEG	
Road Traffic Management	Max. Vehicle Speed		200km/h
	Recognition Accuracy		>95%
	Coverage		Support simultaneous detection of 4 regions
	Country Region Supported		More than 80 countries and regions
	Illumination Distance		Up to 70m during the day; Up to 35m during the night with illumination
	Attributes Identification		Plate Color, Vehicle Type, Vehicle Color, Vehicle Brand, No-plate Vehicle Capture
	Smart Traffic Function		Evidence Camera Linkage, Vehicle Counting Based on Vehicle Type, Specific Lane Management
	White/Black List		Up to 1000 records inside the camera
	LPR Smart Search		Support
Mobile Communication Parameter	Wireless Communication		Support 5G/4G/3G
	Frequency Bands	5G NR	n1/n2/n3/n5/n7/n8/n12/n20/n28/n41/n66/n71/n77/n78/n79
		LTE-FDD	B1/B2/B3/B4/B5/B7/B8/B9/B12/B13/B14/B17/B18/B19/B20/B21(TBD)/B25/B26/B28/B29/B30/B32/B66/B71
	Wireless Transmission Speed	SA	DL 3.3Gbps; UL 250Mbps
		NSA	DL 3.4Gbps; UL 200Mbps
	SIM Card		Nano SIM
Interface		1*RJ45 10M/100M Ethernet Port	
Compression		G.711/AAC/G.722/G.726	

AI Road Traffic PTZ Bullet Camera			
Model		TS2961-X12TPE(2MP)	TS5361-X12PE(5MP)
Appearance			
Image Sensor		1/2.8" Progressive Scan CMOS	
Lens		5.3~64mm, 12X Optical Zoom	
Field of View		H61°~H5°/D69°~D5°/V36°~V2°	H57°~H4°/D69°~D5°/V44°~V1°
Max. Frame Rate		90fps@(1920x1080)	30fps@(2592x1944)
WDR		140dB Super WDR	120dB Super WDR
Video Compression		H.265*/H.265(HEVC)/H.264*/H.264/MJPEG	
Road Traffic Management	Max. Vehicle Speed	200km/h	
	Recognition Accuracy	>95%	
	Coverage	Support simultaneous detection of 4 regions	
	Illumination Distance	Up to 175m during the day; Up to 60m during the night with illumination	
	Attributes Identification	Plate Color, Vehicle Type, Vehicle Color, Vehicle Brand, No-plate Vehicle Capture	
	Smart Traffic Detection	Evidence Camera Linkage, Vehicle Counting Based on Vehicle Type, Specific Lane Management	
	Pan Range/Pan Speed	360°endless / Pan Manual Speed: 0.1°~50°/s, Pan Preset Speed: 50°/s	
PTZ	Tilt Range/Tilt Speed	-45°~30° / Tilt Manual Speed: 0.1°~25°/s, Tilt Preset Speed: 25°/s	
	Preset/Patrol/Pattern	8 Patrols, up to 48 presets each patrol, 4 patterns	
Interface		Audio I/O (Optional), Alarm I/O (Optional), PoE (802.3at), DC 12V	
Compatibility		API, HTTP, TCP, ONVIF Profile G & S & T	

AI Road Traffic PTZ Bullet Plus Camera					
Model		TS2967-X12TPE(2MP)	TS2967-X23TPE(2MP)	TS4467-X20RPE(4MP)	TS5367-X12PE(5MP)
Appearance					
Image Sensor		1/2.8" Progressive Scan CMOS		1/1.8" Progressive Scan CMOS	1/2.8" Progressive Scan CMOS
Lens		5.3~64mm, 12X Optical Zoom	5~117mm, 23X Optical Zoom	6.4~128mm, 20X Optical Zoom	5.3~64mm, 12X Optical Zoom
Field of View		H61°~H5°/D69°~D5°/ V36°~V2°	H60°~H3°/D69°~D4°/ V35°~V2°	H60°~H3°/D67°~D4°/ V37°~V1°	H57°~H4°/D69°~D5°/ V44°~V1°
Max. Frame Rate		90fps@(1920x1080)		60fps@(2688x1520)	60fps@(2688x1520)
WDR		140dB Super WDR			120dB Super WDR
Video Compression		H.265*/H.265(HEVC)/H.264*/H.264/MJPEG			
Road Traffic Management	Max. Vehicle Speed	200km/h			
	Recognition Accuracy	>95%			
	Coverage	Support simultaneous detection of 4 regions			
	Illumination Distance	Up to 110m during the day; Up to 50m during the night with illumination			
	Attributes Identification	Plate Color, Vehicle Type, Vehicle Color, Vehicle Brand, No-plate Vehicle Capture			
	Smart Traffic Detection	Evidence Camera Linkage, Vehicle Counting Based on Vehicle Type, Specific Lane Management			
PTZ	Pan Range/Pan Speed	360°endless / Pan Manual Speed: 0.1°~60°/s, Pan Preset Speed: 60°/s			
	Tilt Range/Tilt Speed	-45°~30° / Tilt Manual Speed: 0.1°~30°/s, Tilt Preset Speed: 30°/s			
	Preset/Patrol/Pattern	8 Patrols, up to 48 presets each patrol, 4 Patterns			
Interface		Audio I/O, Alarm I/O, PoE (802.3at), DC 12V			
Compatibility		API, HTTP, TCP, ONVIF Profile G & S & T			







AI Road Traffic Speed Dome Camera		
Model	TS4441-X36RPE (4MP)	TS4441-X36RPE /W (4MP)
Appearance		
Image Sensor	1/1.8" Progressive Scan CMOS	
Lens	5.7~205.2mm, 36X Optical Zoom	
Field of View	H63°~H3°/D69°~D3°/ V38°~V1°	
Max. Frame Rate	60Hz/50Hz: 100fps@(1920x1080, 1280x960, 1280x720, 704x576)	
WDR	140dB Super WDR Pro	
Video Compression	H.265*/H.265(HEVC)/H.264*/H.264/MJPEG	
Road Traffic Management	Max. Vehicle Speed	200km/h
	Recognition Accuracy	>95%
	Coverage	Support simultaneous detection of 4 regions
	Illumination Distance	Up to 290m during the day; Up to 110m during the night with illumination
	Attributes Identification	Plate Color, Vehicle Type, Vehicle Color, Vehicle Brand, No-plate Vehicle Capture
	Smart Traffic Detection	Evidence Camera Linkage, Vehicle Counting Based on Vehicle Type, Specific Lane Management
PTZ	Pan Range/Pan Speed	360°endless / Pan Manual Speed: 0.1°~250°/s, Pan Preset Speed: 250°/s
	Tilt Range/Tilt Speed	-5°~90° / Tilt Manual Speed: 0.1°~160°/s, Tilt Preset Speed: 160°/s
	Preset/Patrol/Pattern	8 Patrols, up to 48 presets each patrol,4 patterns
Wiper	-	Support
Interface	RS485, Audio I/O, 4*Alarm In, 2*Alarm Out, PoE (802.3at), AC 24V	
Compatibility	API, HTTP, TCP, ONVIF Profile G & S & T	

AI Road Traffic Parking Detection Pro Bullet Plus Camera		
Model	TS8266-FPE /P (2MP)	
Appearance		
Image Sensor	1/1.8" Progressive Scan CMOS	
Lens	Motorized 3.6~10mm@F1.4	
Field of View	H116°~H48°/D134°~D55°/V65°~V27°	
Min. Illumination	Color: 0.009Lux@F1.4 B/W: 0Lux with IR on	
WDR	120dB Super WDR	
Road Traffic Management	Smart Traffic Function	Parking Detection, Parking Violation Detection
	Detection Space	Support simultaneous detection of 4 parking spaces
		Support simultaneous detection of 2 illegal parking areas
	Recognition Accuracy	98%
	Attributes Identification	Plate Color, Vehicle Type, Vehicle Color, Vehicle Brand, No-plate Vehicle Capture
	Country Region Supported	More than 80 countries and regions
	Parking Smart Search	Support
Video	Max. Image Resolution	30fps@(3840x2160)
	Video Compression	H.265*/H.265(HEVC)/H.264*/H.264/MJPEG
Interface	Interface	Audio I/O, Alarm I/O, PoE (802.3at), DC 12V
	Network Storage	NAS(Support NFS, SMB/CIFS), ANR
Network	Protocol	IPv4/IPv6, ARP, TCP, UDP, RTCP, RTP, RTSP, RTMP, HTTP, HTTPS, DNS, DDNS, DHCP, FTP, NTP, SMTP, SNMP, UPnP, Bonjour, SIP, PPPoE, VLAN, 802.1x, QoS, IGMP, ICMP, SSL
Compatibility	API, HTTP, TCP, ONVIF Profile G & S & T	

4G Solar-powered Traffic Sensing Camera

SOLAR POWERED / RADAR TRIGGER / WI-FI SUPPORTED / 3-AXIS MECHANICAL DESIGN / MQTT

 4G	 Solar-Powered	 Object Capture	 Radar Triggered		<h3>KEY FEATURES</h3> <ul style="list-style-type: none"><li>Solar Power Supported</li><li>4G LTE</li><li>Low Power Consumption</li><li>Radar Triggered</li><li>Quick Start Capture</li><li>Wi-Fi Supported for Quick Configuration</li></ul>
				4G Solar-powered Traffic Sensing Camera	
		Model		SC211-NA/EU/AU(2MP)	
Capture Performance			Capture Rate	≥95%	
			Optimal Capture Distance	6m (With 6mm lens) 15m~20m (With 16mm lens)	
			Capture Range	3~15m (With 6mm lens) 10~25m (With 16mm lens)	
			Nighttime Capture Distance	Up to 15m (With 6mm lens) Up to 25m (With 16mm lens)	
			Capture Speed	Be recommended to use when the vehicle speed <30km/h (With 6mm lens); Be recommended to use when the vehicle speed <70km/h (With 16mm lens)	
Wireless Network			WLAN	802.11n/802.11b/802.11g	
			Cellular	4G LTE NA: B2/B4/B5/B12/B13/B25/B26 EU: B1/B3/B7/B8/B20/B28 AU: B1/B2/B3/B4/B5/B7/B8/B28/B66	
			SIM Card	Nano SIM	
Lens			Lens	16mm/6mm	
			Field of View	H19.4° /D22.2° /V11° (16mm) H52.8°/D60.4°/V29.7° (6mm)	
Image			Max. Resolution	1920×1080	
General			GPS	Built-in High-accuracy GPS Module	
			Protocol	MQTT	
	Solar Power	Power	≥35W		
		OCV	<22V		
		Connector	MC4		
	Direct Battery Power	Power Supply		USB Type-C	
		Battery		Single Cell Battery: 3.2V, 3200mAh, 10.24Wh Total: 7.2V, 6400mAh, 46.08Wh	
		Operational Temperature		Charge: -20°C~45°C Discharge: -20°C~60°C	
		Battery Life		The power is 70% after 500 times of accumulative charging and discharging	
			Power Consumption	0.33W Normal (Detection Status) 1.35W Normal (Capture Status) 11W MAX (Night Capture Status)	
			Weather Proof	IP66	
			Weight	1040g 212g(Battery Weight)	
			Rain Cover Movement Distance	10mm	
			Dimensions	175mmX111mmX56.7mm(Without Rain Cover)	
			Warranty	2 Years	



Milesight Entrance & Exit Management



- KEY FEATURES
- Excellent Capture Performance
  - AI-empowered LPR
  - Plate Management & Search
  - Evidence Camera Linkage
  - Extensive Compatibility

Entrance & Exit AI LPR Bullet Camera		Entrance & Exit AI LPR Pro Dome Camera
Model	MS-C2964-RFLPE(2MP)	
Appearance		
Image Sensor	1/2.8" Progressive Scan CMOS	
Lens	Motorized 2.7~13.5mm@F1.4	
Field of View	H111°~H34°/D130°~D39°/V60°~V19°	H115°~H34°/D135°~D39°/V62°~V19°
Max. Frame Rate	60Hz: 60fps@(1920x1080, 1280x960, 1280x720, 704x576) 50Hz: 50fps@(1920x1080, 1280x960, 1280x720, 704x576)	
WDR	140dB Super WDR	140dB Super WDR
Video Compression	H.265*/H.265(HEVC)/H.264*/H.264/MJPEG	
Entrance & Exit Management	Max. Vehicle Speed	200km/h
	Recognition Accuracy	>98%
	Coverage	Support simultaneous detection of 4 regions
	Illumination Distance	Up to 25m during the day; Up to 20m during the night with illumination
	Attributes Identification	Plate Color, Vehicle Type, Vehicle Color, Vehicle Brand, No-plate Vehicle Capture
Interface	PoE (802.3af), DC 12V; Audio I/O, Alarm I/O, PoE (802.3af), DC 12V (Multi-interface Version)	Built-in Microphone and 1 Audio Output Interface, Alarm I/O, PoE (802.3af), DC 12V
Compatibility	API, HTTP, TCP, ONVIF Profile G & S & T	


Entrance & Exit Supplement Light AI LPR Pro Bullet Plus Camera		
Model	MS-C2966-RFLWPE /W (2MP)	MS-C2966-RFLWPE /R (2MP)
Appearance		
Image Sensor	1/2.8" Progressive Scan CMOS	
Lens	Motorized 2.7~13.5mm@F1.4	
Field of View	H113°~H33°/D130°~D38°/V60°~V18°	
Max. Frame Rate	60Hz: 60fps@(1920x1080, 1280x960, 1280x720, 704x576) 50Hz: 50fps@(1920x1080, 1280x960, 1280x720, 704x576)	
WDR	140dB Super WDR	
Video Compression	H.265*/H.265(HEVC)/H.264*/H.264/MJPEG	
Entrance & Exit Management	Max. Vehicle Speed	200km/h
	Recognition Accuracy	>98%
	Coverage	Support simultaneous detection of 4 regions
	Illumination Distance	Up to 25m during the day; Up to 25m during the night with illumination
	Attributes Identification	Plate Color, Vehicle Type, Vehicle Color, Vehicle Brand, No-plate Vehicle Capture
Illuminator	Supplement Light	White LED Light
	Light Bead	6
	Light Control	IR LED Light 9 Auto/Always On/Off/Customize
Interface	Wiegand Interface, Audio I/O, Alarm I/O, PoE (802.3at), DC 12V	
Compatibility	API, HTTP, TCP, Wiegand Protocol ONVIF Profile G & S & T	

Milesight Parking Management





- KEY FEATURES
- AI-powered LPR Algorithm
  - Efficient Parking Space Management
  - LoRa Outstanding Performance
  - Low Power Consumption
  - Flexible Compatibility
  - Easy Deployment
  - Excellent Scene Adaptability


Indoor Parking Management

		Indoor Parking Guidance Camera
Model		PM3322-E (3MP*2)
Appearance		
Image Sensor		1/2.8" Progressive Scan CMOS
WDR		120dB Super WDR
Min. Illumination		Color: 0.008Lux@F1.6 B/W: 0Lux with IR on
Shutter Time		1/100000s~1s
LED Indicator		Default color is Red (all occupied), Green (available), Blue (available for special parking). The default color can be switched to Orange, Yellow, Cyan and Purple as needed. Supports indicator flashing.
Parking Management	Parking Occupancy Detection Accuracy	≥99.9%
	LPR Accuracy	>98%
	Attribute Recognition Accuracy	>95%
	Parking Space Detection	Up to 6 Parking Spaces for Parking Detection with attributes recognition
	Attributes Identification	License Plate, Plate Color, Vehicle Type, Vehicle Color
	Country Region Supported	More than 60 countries and regions
Illuminator	Lens	2.8mm*2@F1.6
	Field of View	H106°/D127°/V56°
	Angle Adjustment	Pan: 0° to 60° Tilt: 0° to 30°
Video	Max. Image Resolution	2048x1536
	Video Compression	H.264
	Video Bit Rate	16Kbps~16Mbps(CBR/VBR Adjustable)
	Image Setting	Brightness/Contrast/Saturation/Sharpness
Interface	Ethernet	2*RJ45 10M/100M Ethernet Port
	Audio Out	1
Network	Protocol	MQTT, TCP/IP, HTTP, HTTPS, RTSP, UPnP, DDNS, SNMP
General	Working Temperature	-40℃~60℃
	Working Humidity	5~90%(Non-condensing)
	Power Supply	PoE (48V~0.3A)*2 (Non-standard) ; DC 12V±10% Note: There are two ways to connect the power supply. One is by using an optional AC Adapter to cascade up to 6 devices, supporting simultaneous power supply and networking without using the DC interface; the other is to deploy through a regular network port for networking and a DC port for power supply, without the AC Adapter.
	Power Consumption	6W MAX 8W MAX (With LED on)
	Weather Proof	Up to IP65-rated for Weather-resistant Performance
	Surge Protection	6KV
	Weight	500g
	Dimensions	Φ160mmX97.5mm
	Warranty	3/5 Years



Entrance & Exit Supplement Light AI LPR Pro Bullet Plus Camera		
Model	MS-C2966-RFLWPE /W (2MP)	MS-C2966-RFLWPE /R (2MP)
Appearance		
Image Sensor	1/2.8" Progressive Scan CMOS	
Lens	Motorized 2.7~13.5mm@F1.4	
Field of View	H113°~H33°/D130°~D38°/V60°~V18°	
Max. Frame Rate	60Hz: 60fps@(1920x1080, 1280x960, 1280x720, 704x576) 50Hz: 50fps@(1920x1080, 1280x960, 1280x720, 704x576)	
WDR	140dB Super WDR	
Video Compression	H.265+/H.265(HEVC)/H.264+/H.264/MJPEG	
Entrance & Exit Management	Max. Vehicle Speed	200km/h
	Recognition Accuracy	>98%
	Coverage	Support simultaneous detection of 4 regions
	Illumination Distance	Up to 25m during the day; Up to 25m during the night with illumination
	Attributes Identification	Plate Color, Vehicle Type, Vehicle Color, Vehicle Brand, No-plate Vehicle Capture
Illuminator	Supplement Light	White LED Light
	Light Bead	6
	Light Control	Auto/Always On/Off/Customize
Interface	Wiegand Interface, Audio I/O, Alarm I/O, PoE (802.3at), DC 12V	
Compatibility	API, HTTP, TCP, Wiegand Protocol ONVIF Profile G & S & T	

		Semi-Industrial LoRaWAN® Gateway	Mini LoRaWAN® Gateway
Model		UG65	UG63
Appearance			
Hardware System	CPU	Quad-core 1.5 GHz, 64-bit ARM Cortex-A53	528 MHz, ARM Cortex-A7
	Memory	512 MB DDR4 RAM	256 MB DDR4 RAM
	Flash	8 GB eMMC	4 GB eMMC
LoRaWAN®	Antenna	2 x Internal Antennas (Optional: 1 x 50 Ω N-Female External Connector)	2 x Internal Antennas
	Channel	8 (Half/Full-duplex)	
	Frequency Ban	CN470/IN865/EU868/RU864/US915/AU915/KR920/AS923-1&2&3&4	
	Sensitivity	-140dBm Sensitivity @292bps	
	Output Power	27dBm Max	
Ethernet Interface	Protocol	V1.0 Class A/Class B/Class C and V1.0.2 Class A/Class B/Class C	
	Port	1 × RJ45 (PoE PD supported)	
	Physical Layer	10/100/1000 Base -T (IEEE 802.3)	
Wi-Fi Interface	Data Rate	10/100/1000 Mbps (Auto-Sensing)	10/100Mbps (Auto-Sensing)
	Standards	IEEE 802.11 b/g/n, 2.4GHz	
Power Supply and Consumption	Mode	AP or Client mode	Full or Half Duplex (Auto-Sensing)
	Power Input	DC Jack Connector for 9-24 VDC power supply 1 x 802.3 af PoE input	1 x 802.3af standard PoE input 5V by Type-C Port
Cellular Interface (Optional)	Power Consumption	Typical 2.9 W, Max 4.2 W	Max 3.3 W
	Antenna	Internal Antenna	-
Cellular Interface (Optional)	SIM Slot	1 (mini SIM-2FF)	-
	Ingress Protection	IP65	IP30
Ethernet Isolation		1.5 kV RMS	

		LoRaWAN® Ultrasonic Distance/Level Sensor
Model		EM310-UDL
Appearance		
Wireless Transmission	Technology	LoRaWAN®
	Frequency	CN470/IN865/RU864/EU868/US915/AU915/KR920/AS923
	TxPower	16 dBm (868 MHz)/22 dBm (915 MHz)/19 dBm (470 MHz)
Measurement	Sensitivity	-137 dBm@300bps
	Mode	OTAA/ABP Class A
	Detection Range	3 – 450 cm
	Detection Accuracy	± (1+0.3%*S) cm, S=distance
	Distance Resolution	1 mm
Configuration		NFC Configuration via Mobile App
Power Supply		2 x 3500 mAh ER17505 Li-SOCl2 battery
Battery Life		Up to 10 years (10 min interval + 20 triggers per day)
Ingress Protection		IP67

AI Outdoor Parking Management Solution

AI Outdoor Parking Management Pro Bullet Plus Camera		
Model		PMC8266-FPC(4K)
Appearance		
Image Sensor		1/1.8" Progressive Scan CMOS
Lens		Motorized 3.6~10mm@F1.4
Field of View		H116°~H48°/D134°~D55°/V65°~V27°
Max. Frame Rate		60Hz: 30fps@(3840x2160, 3072x2048, 2592x1944, 2592x1520, 2048x1536, 1920x1080, 1280x960, 1280x720, 704x576) 50Hz: 25fps@(3840x2160, 3072x2048, 2592x1944, 2592x1520, 2048x1536, 1920x1080, 1280x960, 1280x720, 704x576))
WDR		120dB Super WDR
Video Compression		H.265+/H.265(HEVC)/H.264+/H.264/MJPEG
Parking Management	Parking Application Mode	Occupancy Detection/Parking Detection
	Parking Space Detection	Up to 4 Parking Spaces for Parking Detection with LPR; Up to 100 Parking Spaces@10m for Occupancy Detection
	Detection Accuracy	>98%
	Data Report	Triggered Report: when parking space is occupied or released; Interval Report: regular report of entire parking situation
	Mounting Height	4~8m (For Parking Detection with LPR); >3.5m (For Occupancy Detection)
Interface		Audio I/O, Alarm I/O, PoE (802.3at), DC 12V
Compatibility		API, HTTP, TCP, ONVIF Profile G & S & T



Milesight is a fast-growing high-tech company delivering smart IoT and video surveillance products with a focus on IoT technologies, including Artificial Intelligence, 5G and LoRaWAN®, since 2011. With improved sensing capability and advanced IoT insights, we help customers worldwide optimize their business operation in a more efficient and sustainable way. In collaboration with a global network of distributors and system integrators, we are committed to building open ecosystems and accelerating IoT strategies to the next level.

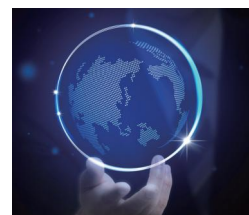
INNOVATION

QUALITY

SERVICE

## About Milesight

### INNOVATION



Milesight aims to bring customers more added value through innovative solutions, continually challenging the conventional for a smarter and safer future.

Attaching high importance to the R&D, Milesight keeps a fast and accurate turnaround to the quick developing security market and brings state-of-the-art technologies.



### QUALITY

Quality is our foundation. With industry criteria embedded in the design details of Milesight products from inside out, we're in the endless pursuit of precise spirit to make perfection more perfect.



We have attained extensive international standards of certification, including CE/ FCC/LVD/ROHS/ISO9001/UL, etc.

### SERVICE

Milesight provides the exclusive and efficient support service that we stay close with our customers to follow the issue from beginning to end to make sure it would be well solved.



At Milesight, we treasure every customer, as a sustainable and win-win partnership is what we've long been striving for.