

PLA-A36EA7 & PUZ-HA36NKA
36,000 BTU/H 3' X 3' CEILING CASSETTE
36,000 BTU/H HYPER-HEATING UNIVERSAL OUTDOOR



Job Name:

System Reference:

Date:



Indoor Unit.....PLA-A36EA7

Outdoor Unit.....PUZ-HA36NKA

INDOOR UNIT FEATURES

- Space-efficient ductless installation
- Equipped with 3D i-see Sensor® for enhanced comfort and energy efficiency
- Airflow settings for high and low ceiling applications
- Individual vane settings for direct/indirect airflow control or variable airflow patterns
- Knockouts for outside-air intake and branch-duct run
- Filter indicator signal
- Easy-to-clean, washable filter (optional high-efficiency filter available - requires multi-function casement)
- Built-in condensate lift mechanism
- Ideal for retail shops, classrooms, office spaces, conference centers, building lobbies, and more
- Multiple control options available:
 - kumo cloud® smart device app for remote access
 - Third-party interface options
 - Wired or wireless controllers

OUTDOOR UNIT FEATURES

- Variable speed INVERTER-driven compressor
- High heating capacity: flash injection circuit maintains 100% heating capacity at 5°F outdoor temperature
- Wide heating range: heating performance down to -13°F (average of 80% heating capacity)
- High speed heating at start up: Hyper-Heating INVERTER® reduces the time for heating at start up by about half compared to standard models
- Suction accumulator pre-charged with refrigerant volume for piping length up to 100 ft.
- High pressure/temperature protection
- Built-in base pan heater
- Flash injection circuit provides efficient high heating capacities at low ambient temperatures



SPECIFICATIONS: PLA-A36EA7 & PUZ-HA36NKA

Cooling at 95°F ¹	Maximum Capacity	BTU/H	36,000
	Rated Capacity	BTU/H	36,000
	Minimum Capacity	BTU/H	14,800
	Maximum Power Input	W	2,750
	Rated Power Input	W	2,750
	Moisture Removal	Pints/h	5.5
	Sensible Heat Factor		0.83
Heating at 47°F ²	Power Factor [208V / 230V]	%	98.0 / 98.0
	Maximum Capacity	BTU/H	40,000
	Rated Capacity	BTU/H	38,000
	Minimum Capacity	BTU/H	16,700
	Maximum Power Input	W	2,880
	Rated Power Input	W	2,650
Heating at 17°F ³	Power Factor [208V / 230V]	%	98.0 / 98.0
	Maximum Capacity	BTU/H	38,000
	Rated Capacity	BTU/H	24,200
	Maximum Power Input	W	4,785
Heating at 5°F ⁴	Rated Power Input	W	2,715
	Maximum Capacity	BTU/H	38,000
Heating at -13°F ⁷	Maximum Power Input	W	5,465
	Maximum Capacity	BTU/H	30,400
Efficiency	SEER SEER2		20.0 20.0
	EER ¹ EER2 ¹		13.0 13.0
	HSPF [IV] HSPF2 [IV]		10.4 9.0
	COP at 47°F ²		4.2
	COP at 17°F at Maximum Capacity ³		2.3
	COP at 5°F at Maximum Capacity ⁴		2.0
	ENERGY STAR® Certified		Yes
Electrical	Voltage, Phase, Frequency		208/230, 1, 60
	Guaranteed Voltage Range	V AC	198 - 253
	Voltage: Indoor - Outdoor, S1-S2	V AC	208/230
	Voltage: Indoor - Outdoor, S2-S3	V DC	24
	Short-circuit Current Rating [SCCR]	kA	5
	Recommended Fuse/Breaker Size (Outdoor)	A	35
	Recommended Wire Size [Indoor - Outdoor]	AWG	14
	Power Supply		Indoor unit is powered by the outdoor unit
Indoor Unit	MCA	A	2.0
	Fan Motor Full Load Amperage	A	0.95
	Fan Motor Type		DC Motor
	Airflow Rate at Cooling, Dry	CFM	670–850–1,020–1,200
	Airflow Rate at Cooling, Wet	CFM	630–810–980–1,160
	Airflow Rate at Heating, Dry	CFM	670–850–1,020–1,200
	Sound Pressure Level [Cooling]	dB[A]	32–37–41–44
	Sound Pressure Level [Heating]	dB[A]	32–37–41–44
	Drain Pipe Size	In. [mm]	1-1/4 [32]
	Condensate Lift Mechanism, Maximum Distance	In. [mm]	33-7/16 [849]
	Coating on Heat Exchanger		—
	External Finish Color		White Munsell 6.4Y 8.9/0.4
	Unit Dimensions	W x D x H: In. [mm]	33-1/16 // 37-13/32 x 33-1/16 // 37-13/32 x 11-3/4 // 1-9/16 [840 // 950 x 840 // 950 x 298 // 40]
	Package Dimensions	W x D x H: In. [mm]	35-9/16 // 39-6/16 x 34-5/16 // 38-3/16 x 16-9/16 // 4-12/16 [903 // 1,000 x 871 // 970 x 421 // 121]
	Unit Weight	Lbs. [kg]	56 // 11 [25 // 5]
	Package Weight	Lbs. [kg]	77 [35]
Indoor Unit Operating Temperature Range	Cooling Intake Air Temp [Maximum / Minimum]*	°F	90 DB, 72 WB / 66 DB, 61 WB
	Heating Intake Air Temp [Maximum / Minimum]	°F	77 DB / 59 DB

NOTES:

AHRI Rated Conditions

(Rated data is determined at a fixed compressor speed)

¹Cooling (Indoor // Outdoor)

²Heating at 47°F (Indoor // Outdoor)

³Heating at 17°F (Indoor // Outdoor)

°F 80 DB, 67 WB // 95 DB, 75 WB

°F 70 DB, 60 WB // 47 DB, 43 WB

°F 70 DB, 60 WB // 17 DB, 15 WB

Conditions

⁴Heating at 5°F (Indoor // Outdoor)

⁷Heating at -13°F (Indoor // Outdoor)

°F 70 DB, 60 WB // 5 DB, 4 WB

°F 70 DB, 60 WB // -13 DB, -14 WB

* Indoor/Outdoor Unit Operating Temperature Range (Cooling Air Temp [Maximum / Minimum]):

• Wind baffles required to operate below 23°F DB in cooling mode.

• Refer to wind baffle documentation for further information.

**Outdoor Unit Operating Temperature Range (Cooling Thermal Lock-out / Re-start Temperatures; Heating Thermal Lock-out / Re-start Temperatures):

• System cuts out in heating mode to avoid thermistor error and automatically restarts at these temperatures.

SPECIFICATIONS: PLA-A36EA7 & PUZ-HA36NKA

Outdoor Unit	MCA	A	24.0
	MOCP	A	40
	Fan Motor Output	W	74
	Airflow Rate [Cooling / Heating]	CFM	3880 / 3880
	Refrigerant Control		LEV
	Defrost Method		Reverse Cycle
	Sound Pressure Level, Cooling ¹	dB(A)	52
	Sound Pressure Level, Heating ²	dB(A)	53
	Compressor Type		Scroll
	Compressor Model		ANB33FJMMT
	Compressor Rated Load Amps	A	18
	Compressor Locked Rotor Amps	A	27.5
	Compressor Oil [Type // Charge]	oz.	FV50S // 1.4,47
	External Finish Color		Ivory Munsell 3Y 7.8/1.1
	Base Pan Heater		Built-in
	Unit Dimensions	W x D x H: In. [mm]	41-5/16 x 14-3/16 x 52-11/16 [1050 x 360 x 1338]
	Package Dimensions	W x D x H: In. [mm]	43 x 18 x 57 [1110 x 480 x 1440]
	Unit Weight	Lbs. [kg]	261 [118]
	Package Weight	Lbs. [kg]	285 [129]
Outdoor Unit Operating Temperature Range	Cooling Air Temp [Maximum / Minimum]*	°F	115 DB / 0 DB
	Heating Air Temp [Maximum / Minimum]	°F	70 DB, 59 WB / -13 DB, -13 WB
	Heating Thermal Lock-out / Re-start Temperatures**	°F	-22 / -13
Refrigerant	Type		R410A
	Pre-Charged Refrigerant Amount	Lbs, oz	11.0, 7.0
	Maximum Pre-Charged Piping Length	Ft. [m]	100.0 [30.0]
	Additional Refrigerant Charge Per Additional Piping Length	oz./Ft. [g/m]	.7 [56]
Piping	Gas Pipe Size O.D. [Flared]	In.[mm]	5/8 [15.88]
	Liquid Pipe Size O.D. [Flared]	In.[mm]	3/8 [9.52]
	Maximum Piping Length	Ft. [m]	245 [75]
	Maximum Height Difference	Ft. [m]	100 [30]
	Maximum Number of Bends		15

NOTES:

AHRI Rated Conditions

(Rated data is determined at a fixed compressor speed)

¹Cooling (Indoor // Outdoor)

°F 80 DB, 67 WB // 95 DB, 75 WB

²Heating at 47°F (Indoor // Outdoor)

°F 70 DB, 60 WB // 47 DB, 43 WB

³Heating at 17°F (Indoor // Outdoor)

°F 70 DB, 60 WB // 17 DB, 15 WB

Conditions

⁴Heating at 5°F (Indoor // Outdoor)

°F 70 DB, 60 WB // 5 DB, 4 WB

⁷Heating at -13°F (Indoor // Outdoor)

°F 70 DB, 60 WB // -13 DB, -14 WB

* Indoor/Outdoor Unit Operating Temperature Range (Cooling Air Temp [Maximum / Minimum]):

- Wind baffles required to operate below 23°F DB in cooling mode.
- Refer to wind baffle documentation for further information.

**Outdoor Unit Operating Temperature Range (Cooling Thermal Lock-out / Re-start Temperatures; Heating Thermal Lock-out / Re-start Temperatures):

- System cuts out in heating mode to avoid thermistor error and automatically restarts at these temperatures.

INDOOR UNIT ACCESSORIES: PLA-A36EA7

Control Interface	3-Pin Connector	<input type="checkbox"/> PAC-715AD
	Airzone ZBS Wired Blueface Principal Controller White	<input type="checkbox"/> AZZBSBLUEFACECB
	Airzone ZBS Wired Blueface Principal Controller White	<input type="checkbox"/> AZZBSBLUEZEROCB
	Airzone ZBS Wired Lite Controller White	<input type="checkbox"/> AZZBSLITECB
	Airzone ZBS Wireless Lite Controller White	<input type="checkbox"/> AZZBSLITERB
	Airzone ZBS Wireless Think Controller White	<input type="checkbox"/> AZZBSTHINKRB
	BACnet® and Modbus® Interface	<input type="checkbox"/> PAC-UKPRC001-CN-1
	CN24 Relay Kit	<input type="checkbox"/> CN24RELAY-KIT-CM3
	IT Extender	<input type="checkbox"/> PAC-WHS01IE-E
	kumo station® for kumo cloud®	<input type="checkbox"/> PAC-WHS01HC-E
	Remote Operation Adapter†	<input type="checkbox"/> PAC-SF40RM-E
	Thermostat Interface	<input type="checkbox"/> PAC-US444CN-1
	Thermostat Interface	<input type="checkbox"/> PAC-US445CN-1
	USNAP Adapter	<input type="checkbox"/> PAC-WHS01UP-E
Remote Sensor	Wireless Interface for kumo cloud®	<input type="checkbox"/> PAC-USWHS002-WF-2
	Flush Mount Remote Temperature Sensor	<input type="checkbox"/> PAC-USSEN002-FM-1
	Flush Mount Temperature Sensor	<input type="checkbox"/> PAC-USSEN001-FM-1
	Remote Temperature Sensor	<input type="checkbox"/> PAC-SE41TS-E
Wired Remote Controller	Wireless temperature and humidity sensor for kumo cloud®	<input type="checkbox"/> PAC-USWHS003-TH-1
	Deluxe Wired MA Remote Controller†	<input type="checkbox"/> PAR-40MAAU
	Simple Ductless Wired Remote Controller	<input type="checkbox"/> PAC-SDW01RC-1
	Simple MA Remote Controller†	<input type="checkbox"/> PAC-YT53CRAU-J
Wireless Remote Controller	Touch MA Controller†	<input type="checkbox"/> PAR-CT01MAU-SB
	kumo touch™ RedLINK™ Wireless Controller	<input type="checkbox"/> MHK2
	Lockdown bracket for remote controller	<input type="checkbox"/> RCMKP1CB
	Wireless MA Receiver	<input type="checkbox"/> PAR-FA32MA-W
	Wireless MA Remote Controller	<input type="checkbox"/> PAR-FL32MA-E
	Wireless Remote Controller	<input type="checkbox"/> PAR-SL101A-E
Casement	Wireless Signal Receiver Panel	<input type="checkbox"/> PAR-SR4LU-E
	Multi-function Casement	<input type="checkbox"/> PAC-SJ41TM-E
Condensate	Blue Diamond (Advanced) Mini Condensate Pump w/ Reservoir & Sensor (208/230V) [recommended]	<input type="checkbox"/> X87-721
	Blue Diamond (MegaBlue Advanced) Condensate Pump w/ Reservoir & Sensor	<input type="checkbox"/> X87-835
	Blue Diamond Sensor Extension Cable — 15 Ft.	<input type="checkbox"/> C13-103
	Refco Condensate Pump (100-240 VAC) up to 120,000 BTU/H	<input type="checkbox"/> COMBI
Disconnect Switch	(30A/600V/UL) [fits 2" X 4" utility box] - Black	<input type="checkbox"/> TAZ-MS303
	(30A/600V/UL) [fits 2" X 4" utility box] - White	<input type="checkbox"/> TAZ-MS303W
Filter	High Efficiency Filter Element**	<input type="checkbox"/> PAC-SH59KF-E
i-see Sensor® Panel	Grille with 3D i-see Sensor® (required)	<input checked="" type="checkbox"/> PLP-41EAEU
Lineset	10' x 3/8" x 10' x 5/8" Lineset (Twin-Tube Insulation)	<input type="checkbox"/> MPLS385812T-10
	100' x 3/8" x 100' x 5/8" Lineset (Twin-Tube Insulation)	<input type="checkbox"/> MPLS385812T-100
	15' x 3/8" x 15' x 5/8" Lineset (Twin-Tube Insulation)	<input type="checkbox"/> MPLS385812T-15
	30' x 3/8" x 30' x 5/8" Lineset (Twin-Tube Insulation)	<input type="checkbox"/> MPLS385812T-30
	50' x 3/8" x 50' x 5/8" Lineset (Twin-Tube Insulation)	<input type="checkbox"/> MPLS385812T-50
	65' x 3/8" x 65' x 5/8" Lineset (Twin-Tube Insulation)	<input type="checkbox"/> MPLS385812T-65
Shutter Plate	Shutter Plate	<input type="checkbox"/> PAC-SJ37SP-E
Space Panel	Space Panel	<input type="checkbox"/> PAC-SJ38AS-E

NOTES:

†PAC-SF40RM-E (Unable to use with wireless remote controller)

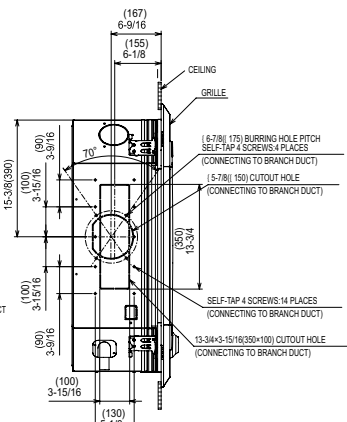
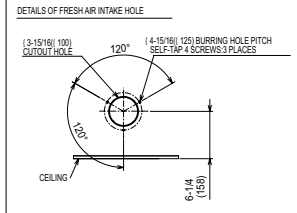
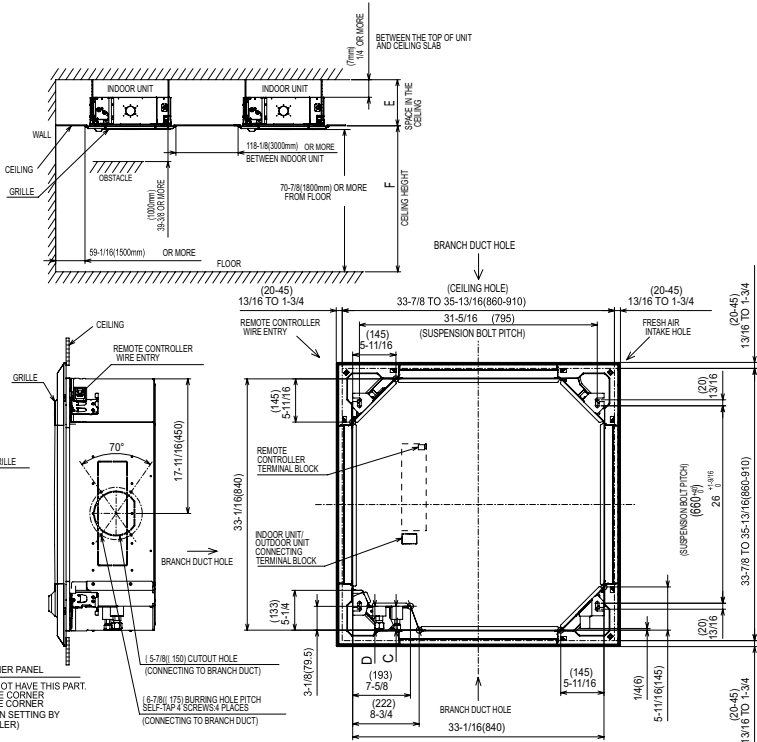
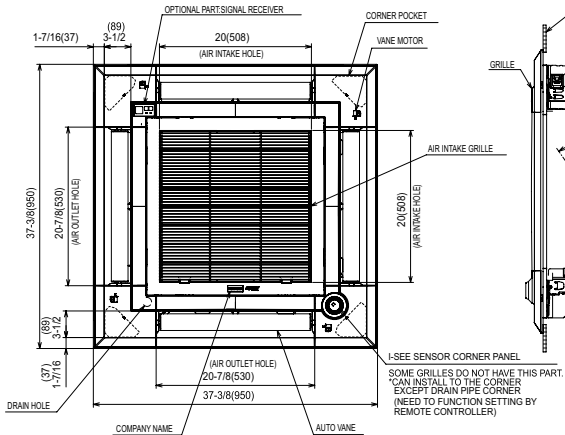
OUTDOOR UNIT ACCESSORIES: PUZ-HA36NKA

Air Outlet Guide	Air Outlet Guide (1 Piece)	<input type="checkbox"/> PAC-SH96SG-E (two pieces are required)
Centralized Drain Pan	Central Drain Pan	<input type="checkbox"/> PAC-SH97DP-E
Control/Service Tool	Control/Service Tool	<input type="checkbox"/> PAC-SK52ST
Hail Guards	Hail Guard	<input type="checkbox"/> HG-A2
M-NET Converter	M-NET Converter	<input type="checkbox"/> PAC-SJ85MA-E
	M-NET Converter	<input type="checkbox"/> PAC-SJ95MA-E
Mounting Pad	Condensing Unit Mounting Pad: 24" x 42" x 3"	<input type="checkbox"/> ULTRILITE2
Optional Defrost Heater	Optional Defrost Heater	<input type="checkbox"/> PAC-SJ20BH-E
Stand	18" Dual Fan Stand	<input type="checkbox"/> QSMS1802M
	24" Dual Fan Stand	<input type="checkbox"/> QSMS2402M
	Condenser Wall Bracket	<input type="checkbox"/> QSWB2000M-1
	Condenser Wall Bracket - Stainless Steel Finish	<input type="checkbox"/> QSWBSS
	Outdoor Unit Stand — 12" High	<input type="checkbox"/> QSMS1202M
Wind Baffle	Front Wind Baffle	<input type="checkbox"/> WB-PA3 (two pieces are required)

INDOOR UNIT DIMENSIONS: PLA-A36EA7

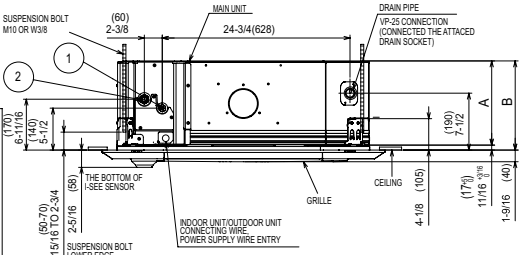
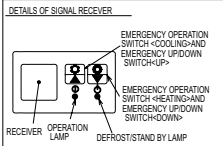
Unit: inch (mm)

- NOTE1.CHOOSE THE GRILLE AMONG THE DEDICATED GRILLES.
 2.REINFORCE THE SUSPENSION BOLT FOR EARTHQUAKE-RESISTANCE AS NEEDED.
 3.FOR THE SUSPENSION BOLT, USE M10 OR W3/8.
 (PROCURRED AT THE LOCAL SITE.)
 4.FOR DRAIN PIPE, USE VP-25(O.D. ϕ 1-1/4"(ϕ 32) PVC TUBE).
 DRAIN PUMP INCLUSION.
 RAISE IS MAX. 33-7/8"(850mm) FROM THE CEILING.
 5.ELECTRICAL BOX MAY BE REMOVED FOR THE SERVICE PURPOSE.
 MAKE SURE TO SLACK THE ELECTRICAL WIRE LITTLE BIT FOR
 CONTROL/POWER WIRES CONNECTION.
 6.THE HEIGHT OF THE INDOOR UNIT IS ABLE TO BE ADJUSTED
 WITH THE GRILLE ATTACHED.
 7.REQUIRES "E" OR MORE SPACE BETWEEN TRANSOM AND CEILING FOR THE INSTALLATION.
 8.WHEN INSTALLING THE BRANCH DUCTS, BE SURE TO INSULATE ADEQUATELY.
 OTHERWISE CONDENSATION AND DRIPPING MAY OCCUR.
 (IT BECOMES THE CAUSE OF DROPLET OR DROPLET DRIPPING.)
 9.AS FOR NECESSARY INSTALLATION/SERVICE SPACE, PLEASE REFER TO THE
 RIGHT AT FIGURE.
 10.FOR THE INSTALLATION OF THE OPTIONAL HIGH EFFICIENCY FILTER OR
 MULTI-FUNCTIONAL CASEMENT,REFER TO SPECIAL DRAWING.



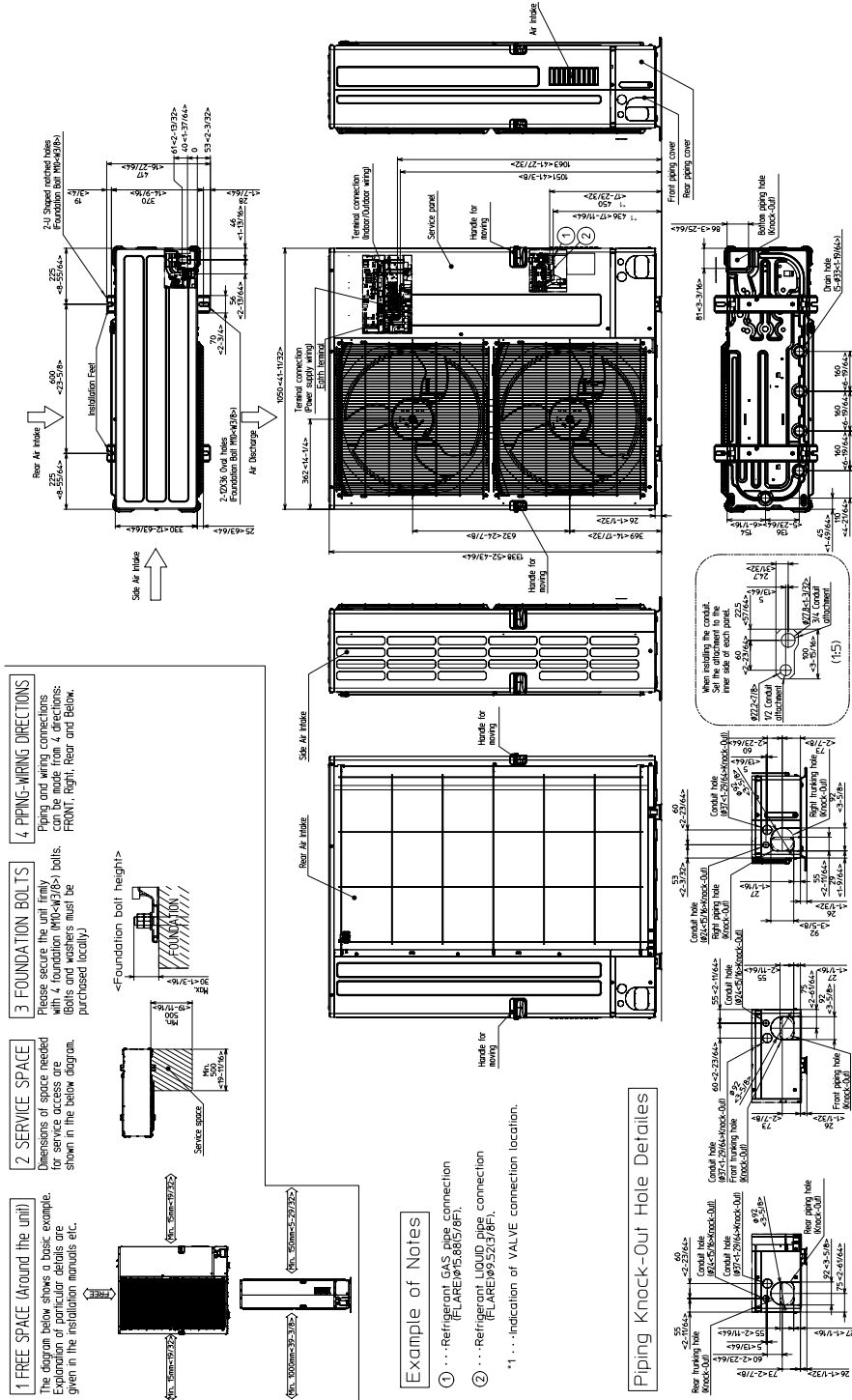
12/19/24/30/36/42 KBTUH

MODELS	①	②	A	B	C	D	E	F
12/18 KBTUH	REFRIGERANT PIPE ϕ 3/8 FLARED CONNECTION 1/6"	REFRIGERANT PIPE 1/2 FLARED CONNECTION 1/6"	9-1/2 (241)	10-3/16 (268)	3/16 (4.8)	3/16 (4.8)	10-7/16(265) OR MORE	137-13/16(3500) OR LESS
24/30/36/42 KBTUH	REFRIGERANT PIPE ϕ 1/2 FLARED CONNECTION 3/8"	REFRIGERANT PIPE 3/4 FLARED CONNECTION 3/8"	11-1/16 (281)	11-3/4 (298)	5-1/8 (127)	5-1/8 (127)	12-3/16(315) OR MORE	177-3/16(4500) OR LESS



OUTDOOR UNIT DIMENSIONS: PUZ-HA36NKA

Unit: mm<in>



1340 Satellite Boulevard Suwanee, GA 30024
Toll Free: 800-433-4822 www.mehvac.com