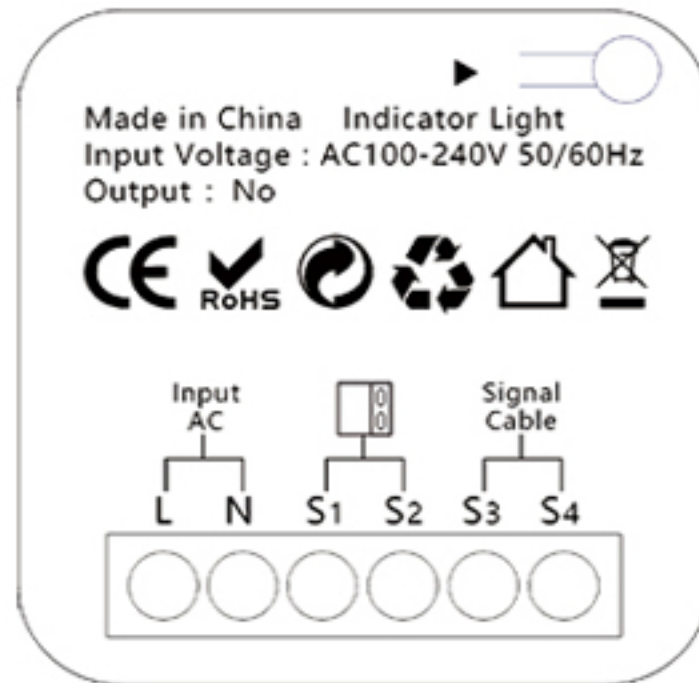
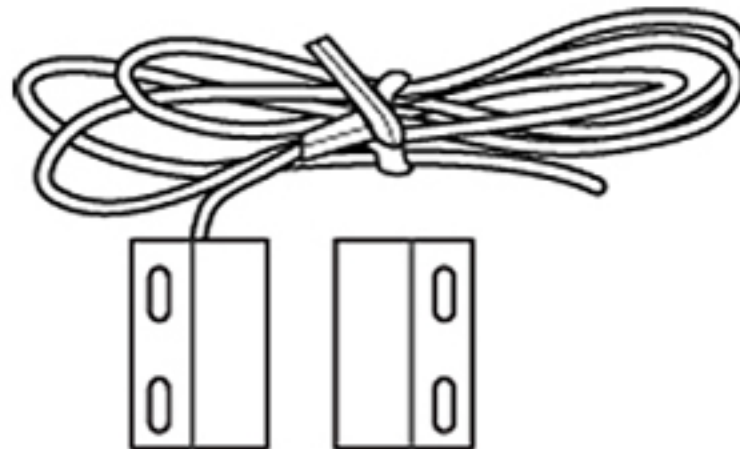


Door Controller

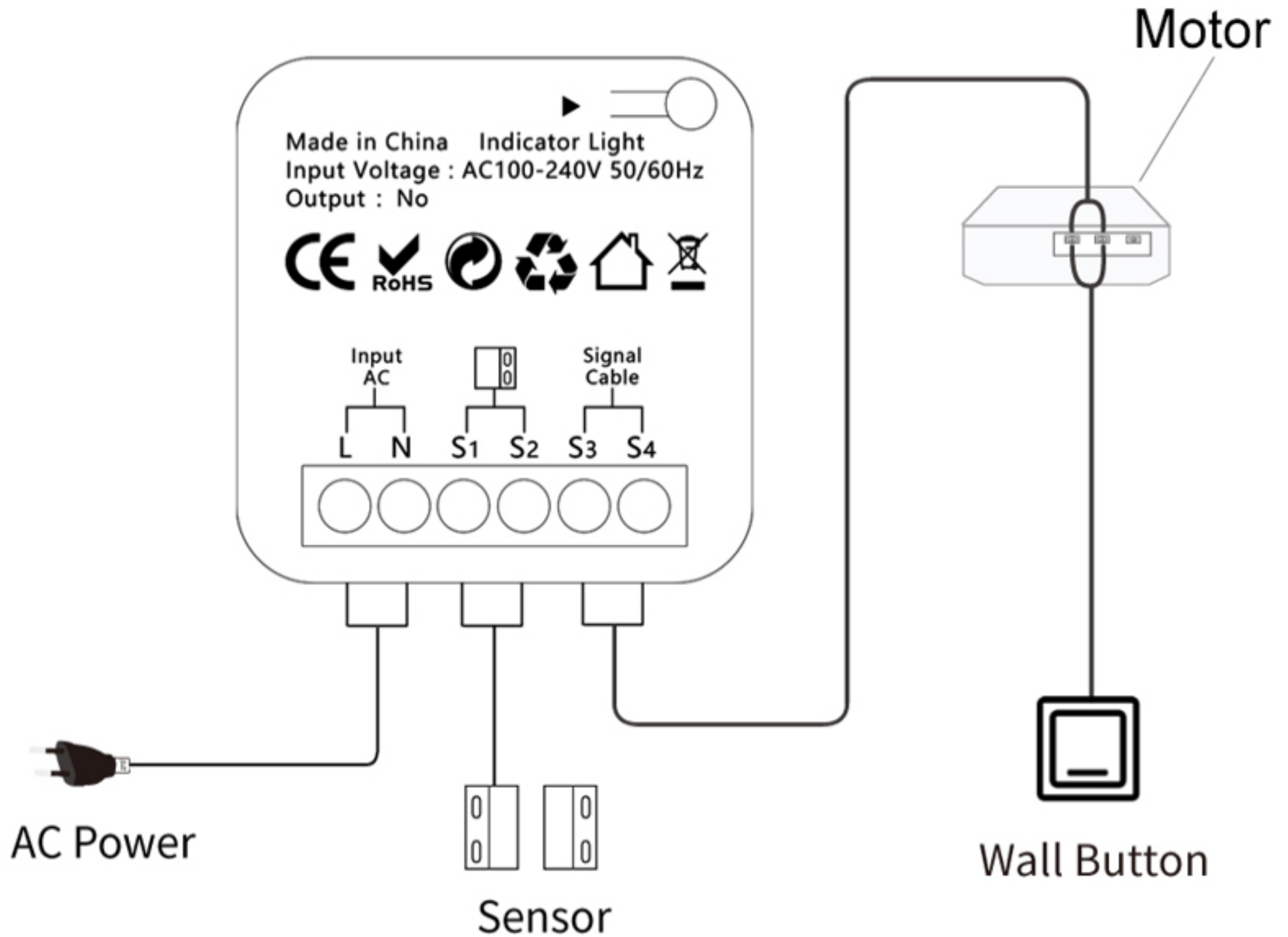


Module

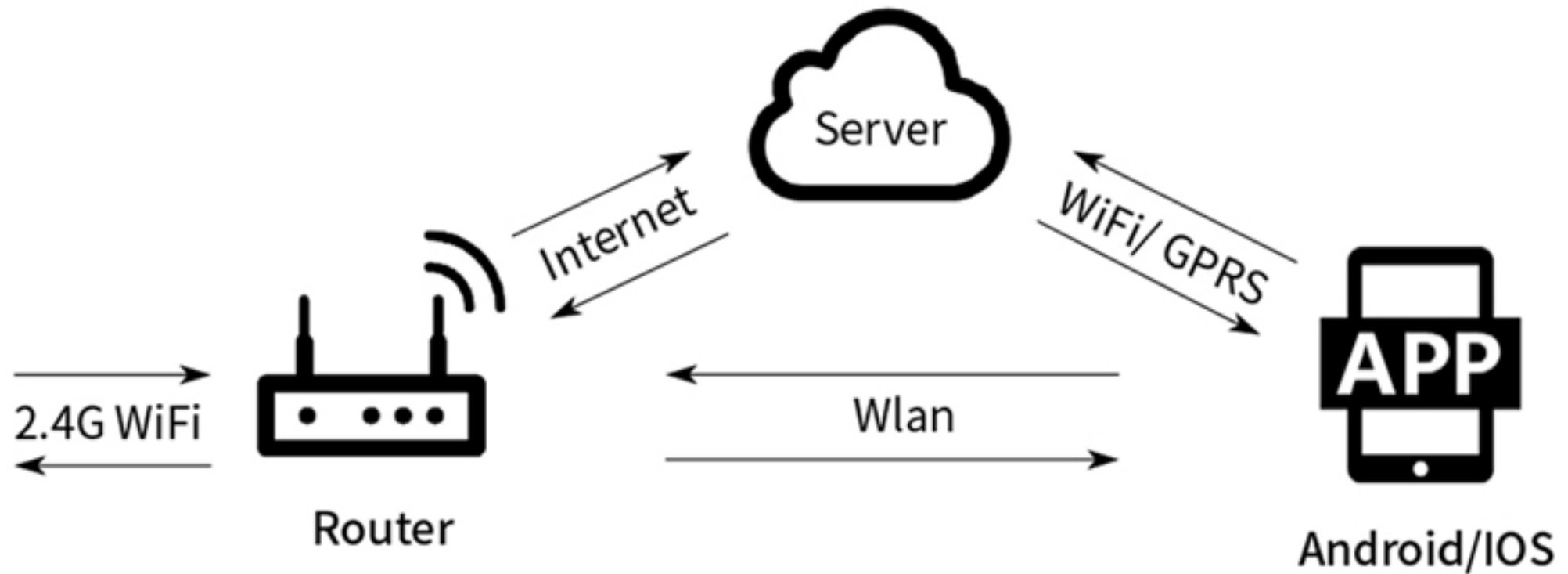


Sensor Cable

Wiring Diagram



Download Smart Life or Tuya Smart app from app store or Google Play store.



Smart Life



Tuya Smart



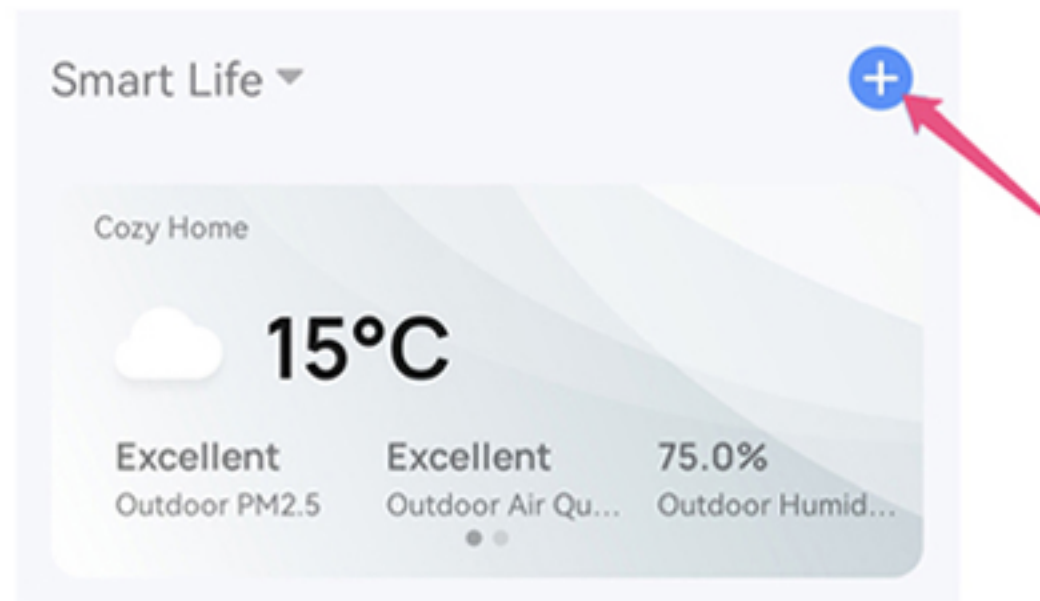
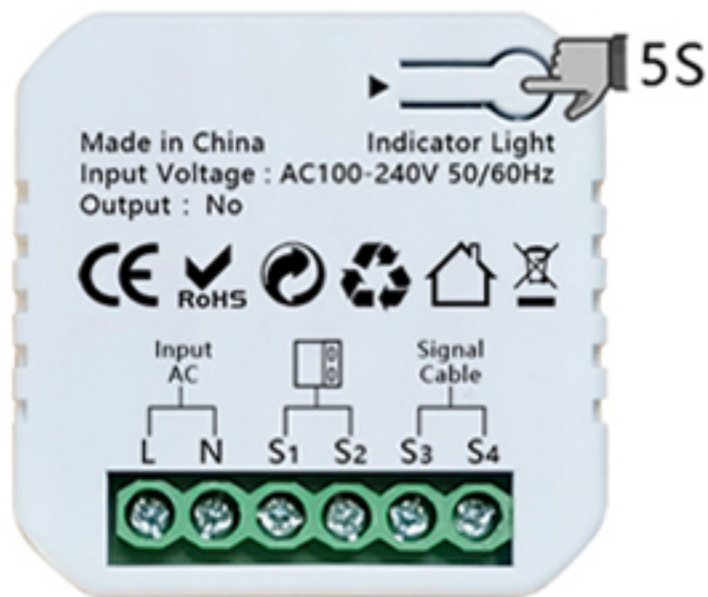
Add the device

Power on the Garage Door Opener, and connect it to your home 2.4GHz WiFi router with Tuya or Smart Life APP.

Attention!

During the pairing process, make sure that your smart phone and the garage are within the range of your Wi-Fi router. (It's better if they are in the same room, a strong Wi-Fi signal is necessary for this smart device)

Press the pairing button for 5seconds until the indicator light quickly flash, then click '+' to add device in the APP.(only support 2.4GHz WiFi network)

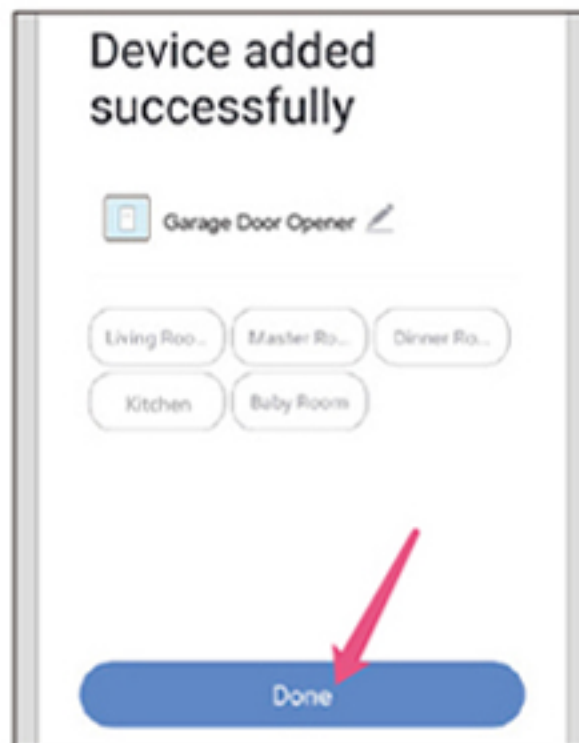


Select the Wi-Fi you are using and input password, Click 'Confirm' to connect the device.

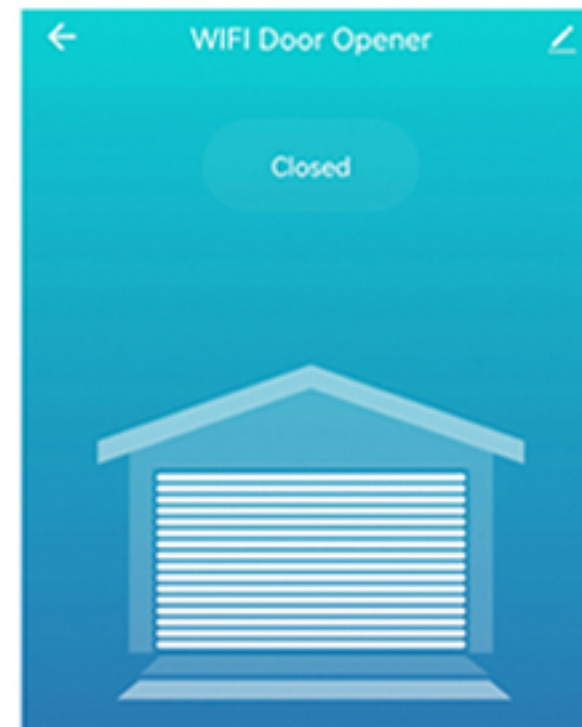
(Note: Our app only supports 2.4GHz Wi-Fi network.)



After connecting finished, then tap 'Done'.



Set up successfully, now you can control the device by phone app.



Keep your garage door is closed.

Find a proper position on the garage door to mount the sensor (You can use the included double-sided adhesive tapes, screws or brackets for sensor fixation). Please make sure the distance between the two sensors is less than 30mm when the garage door is closed, and the two sensors are well separated when the garage door is open.

Ⓐ

