



SE762

GOBLIN

KLE

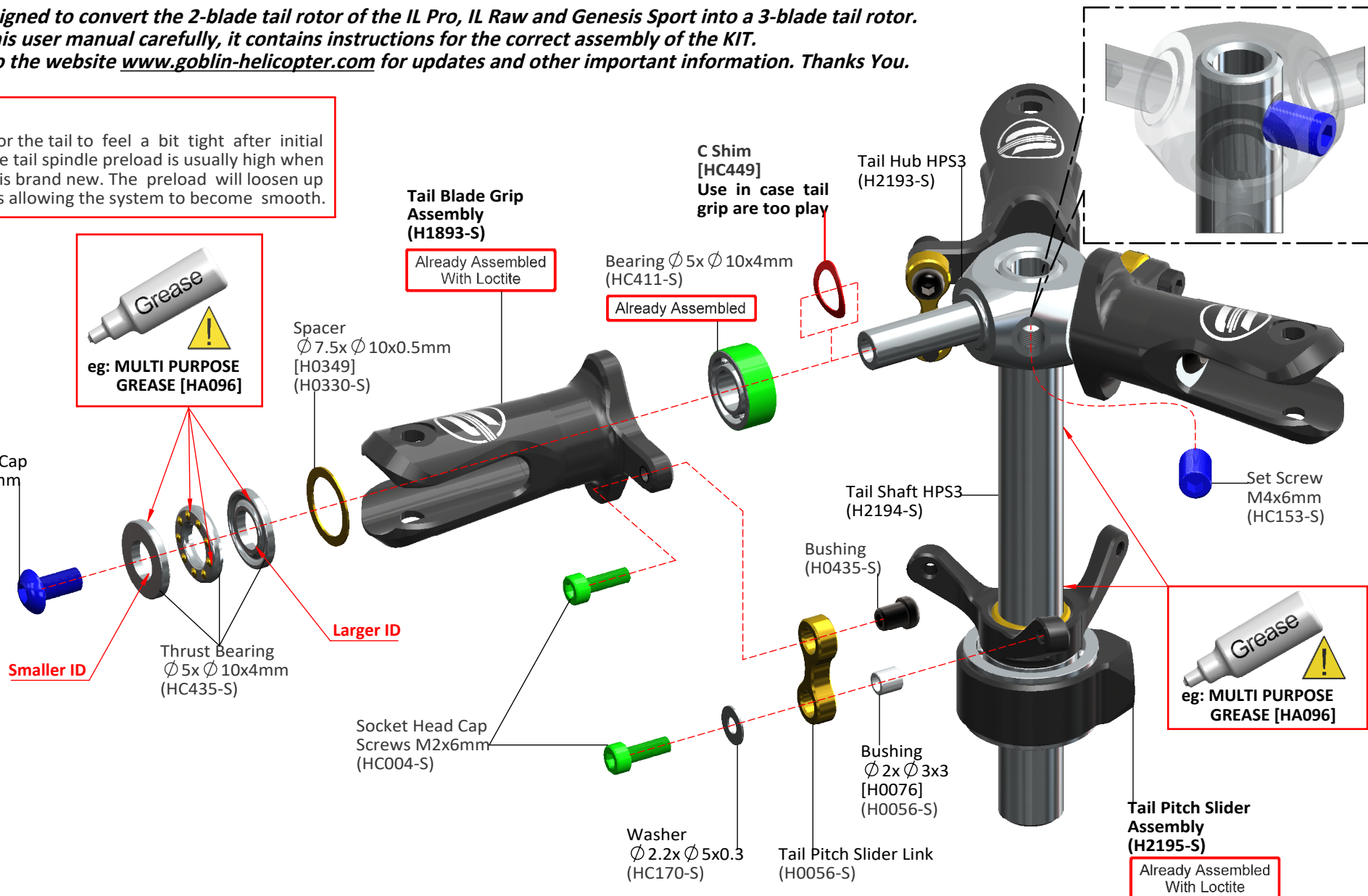
HPS3 ROTOR TAIL [H2242-K]

BAG 1

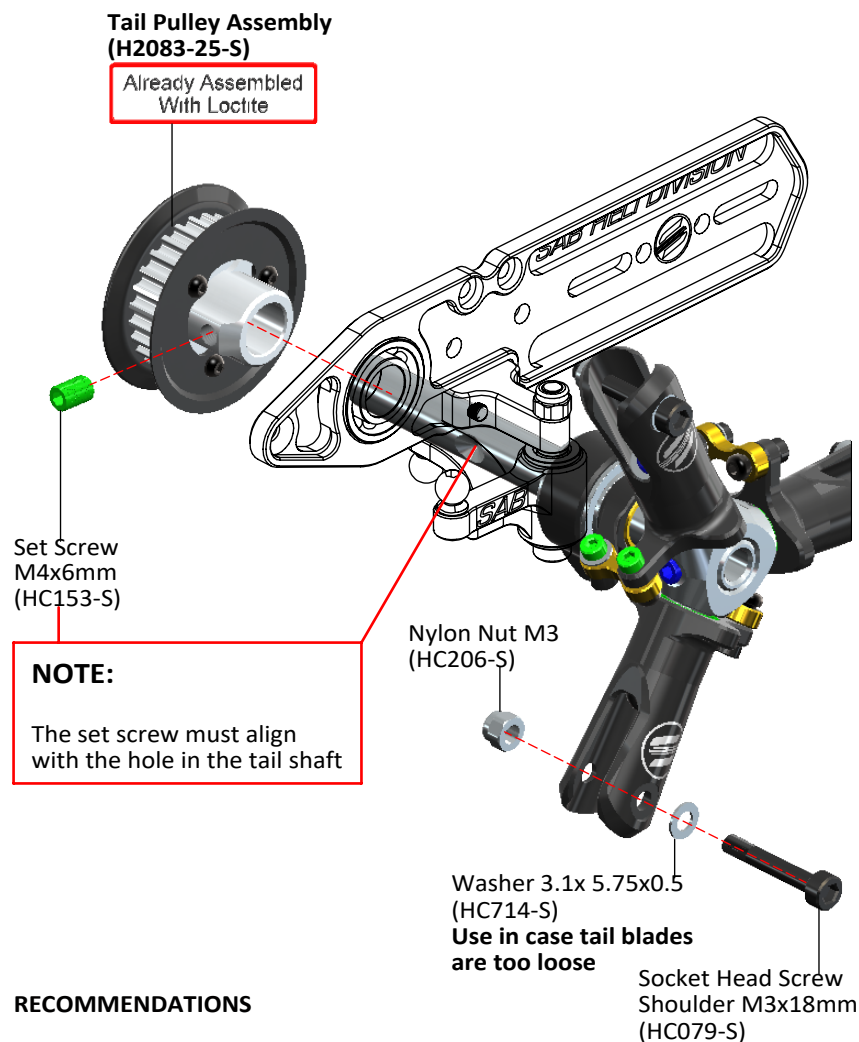
This KIT is designed to convert the 2-blade tail rotor of the IL Pro, IL Raw and Genesis Sport into a 3-blade tail rotor. Please read this user manual carefully, it contains instructions for the correct assembly of the KIT. Please refer to the website www.goblin-helicopter.com for updates and other important information. Thanks You.

NOTE:

It is a normal for the tail to feel a bit tight after initial assembly as the tail spindle preload is usually high when the helicopter is brand new. The preload will loosen up after 2-5 flights allowing the system to become smooth.



BAG 2



RECOMMENDATIONS

- * These parts should be used only with models SAB.
- * Please follow all the instructions shown in the Goblin main manual. In this manual please read Chapter 2, Important notes.
- * Use Loctite on all threads.
- * Prior to use, lubricate all movements with sprat lubricant.

- * Possible to use with the follow Tail blades:
SAB blades for 3 blades tail rotor 110 mm
SAB blades for 3 blades tail rotor 115 mm

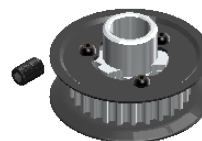
SPARE PARTS

Pin M2 [H0435-S]



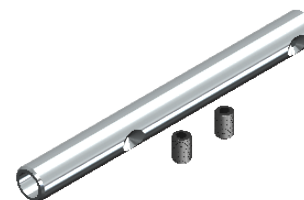
- 3 x Pin M2.
- 3 x Spacer $\varnothing 2 \times \varnothing 3 \times 3 \text{mm}$.
- 3 x Tail Pitch Slider Link.
- 6 x Head Cap Screws M2x6mm.

Tail Pulley Z25 [H2083-25-S]



- 1 x Tail Pulley Z25.
- 2 x Tail Pulley Z25 WS.
- 6 x Button Cap Screws M2x4mm.
- 1 x Set Screw M4x6mm.

Tail Shaft HPS3 [H2194-S]



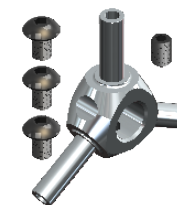
- 1 x Tail Shaft HPS3.
- 2 x Set Screws M4x6mm.

Tail Blade Grip [H1893-S]



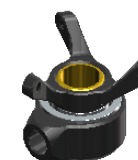
- 2 x Tail Blade Grip.
- 2 x Washer $\varnothing 7,5 \times \varnothing 10 \times 0,5$.
- 2 x Button Cap Screws M4x6mm.
- 4 x Ball Bearing $\varnothing 5 \times \varnothing 10 \times 4$.
- 2 x Thrust Bearing $\varnothing 5 \times \varnothing 10 \times 4$.

Tail Hub HPS3 [H2193-S]



- 1 x Tail Hub.
- 1 x Set Screw M4x6mm.
- 3 x Button Cap Screws M4x6mm.

Tail Pitch Slider [H2195-S]



- 1 x Tail Pitch Slider Assembled.