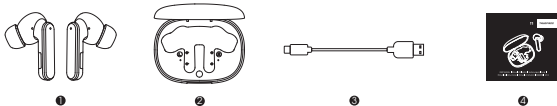


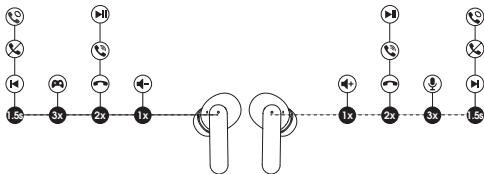
## Package Content



## Specifications

Bluetooth version	5.0
Maximum working distance	Up to 10m
Working hours	Up to 5 hours
Earbud charging time	About 1.5 hours
Charging case charging time	About 1.5 hours
Charge the earbuds with the charging case	Up to 5 times
Product dimensions(length * width * height)	21.3*26.2*36.2mm (earbud) 72.80*54.30*28.70mm (charging case)

## Product Diagram



## Control

Power On	Auto: Open up the case lid Manually: Press and hold the MFB for 1.5s
Power Off	Auto: 1) Place back into charging case and close the lid 2) Automatically power off after 3mins no connection Manually: Press and hold the MFB for 10s
Play / Pause	Double tap the MFB
Volume -	Single tap the left MFB
Volume +	Single tap the right MFB
Previous Track	Press and hold left MFB for 1.5s
Next Track	Press and hold right MFB for 1.5s
Answer / Hang Up Phone Call	Double tap the MFB
Reject Phone Call	Press and hold the MFB for 1.5s
Switch Between Two Calls	Press and hold the MFB for 1.5s
Manually Enter Pairing Mode	Press and hold the button on the charging case for 3s
Activate Voice Assistant	Triple tap the right MFB
Enter / Exit Game Mode	Triple tap the left MFB

## Wearing

1. Identify the left and right earbuds.
2. Rotate earbuds and find the most comfortable position.

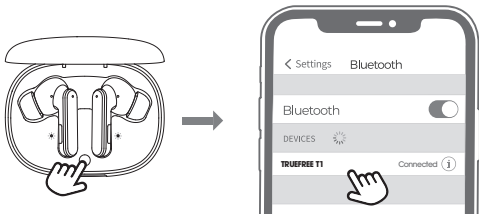


## Start

### Pairing & Connecting

1. Open the charging case lid when the charging case has power, then the left and right earbuds automatically enter the TWS pairing states. After the interconnection successful, the earbuds will be accompanied by a "pairing" prompt, and then the two white lights inside the charging case will flash three times until it turns off, the earbuds enters the pairing mode.
2. At this time, please find the name "TRUEFREE T1" in the Bluetooth list of your device, and click Connect. After the connection succeed, the earbuds will prompt "connected".

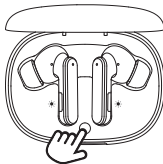
3. TRUEFREE T1 earbuds can remember previously paired devices. When making a second connection, you only need to turn on the Bluetooth in your device and open the charging case at the same time, and they will automatically connect back to your device. If it is not automatically connected, select the pairing name of the earbuds in the Bluetooth list to connect.



## Reset

When the earbuds fail to pair for the second time or cannot be paired with the device, follow the steps to reset:

1. Delete the pairing information of the earbuds from the device
2. Put the earbuds back into the charging case and make sure the earbuds are in charging state. At this time, the two white lights inside the charging case flash slowly, and then press and hold the charging case button for 10 seconds until the two white lights flash three times quickly until it turns off, reset complete.



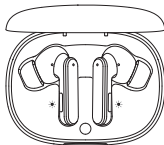
## Charge

TRUEFREE T1 earbuds are equipped with a charging case, which can not only charge the earbuds, but also is convenient to carry and store the earbuds. Built-in battery, can charge two earbuds 5 times.

### Charge the earbuds

The earbuds has been partially charged before delivery. Before first use, make sure they are fully charged.

Put the earbuds into the corresponding slots, and the two lights inside the charging case flash slowly, the earbuds start charging.



### Charge the charging case

Connect the Type-C charging adapter to charge it (charging current does not exceed 1A), at this time, the indicator light on the back of the charging case is white and flashing slowly;

1. When the charging case is fully charged, the charging case indicator light turns off.
2. When not in use for a long time, charge it at least once every three months.



## Warranty Regulations

We guarantee the earbuds for 12 months warrenty from the original purchase against manufacturing defects.

✉ **support@itruefree.com**

🌐 **www.itruefree.com**