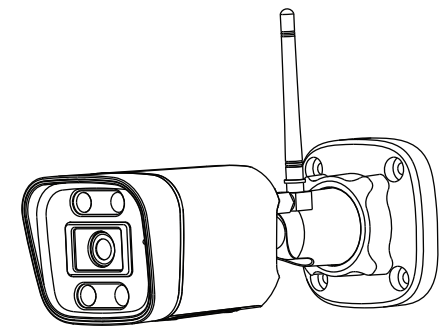


Quick Setup Guide

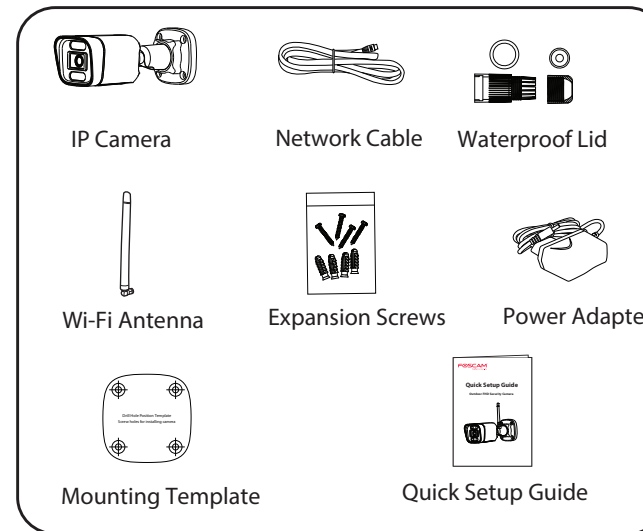


To view this guide in other languages (e.g. Nederlands, Deutsch, Français, Español), and for detailed manuals, tools, etc., please visit foscam.com/downloads.

V1.0
305503000880

Setting Up Your Foscam Security Camera

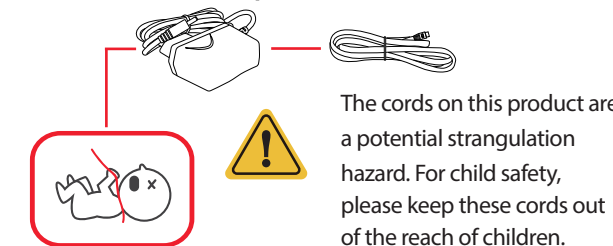
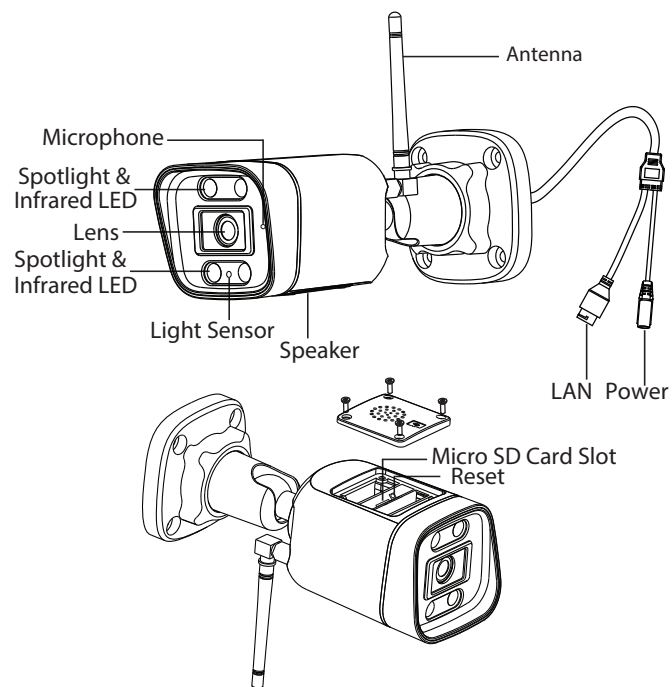
1 Getting Started Package Contents



Security Tips

- Please change the camera's password regularly, using a combination of numbers, letters and special characters.
- We recommend that you regularly update your camera with the latest available software and firmware to ensure the best experience with your camera.

2 Physical Description



3 Setting Up Your Camera: Connection via the Foscam App (Recommended)

Before You Get Started

Scan the QR code below to download and install the Foscam APP.



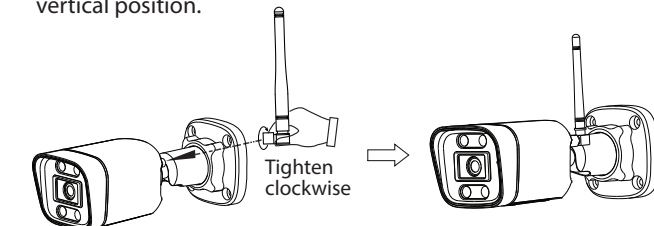
To ensure a smoother video experience on your smart phone, it is recommended that your smart phone meet the following specifications:

- iOS: version 11 or higher.
- Android: 5.0 or higher, using a device with a Graphics Processing Unit (GPU).

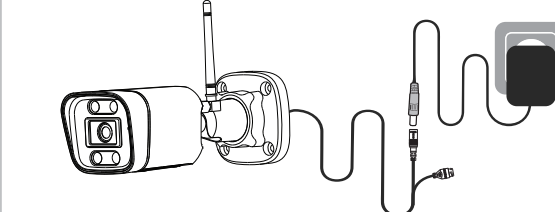
Note: For the best experience, please update the APP to the latest version!

WiFi Connection

1. Please tighten the antenna clockwise and make sure it is in a vertical position.



2. Plug the power adapter into the camera, and please wait for a few seconds until hearing the "Ready for WiFi configuration"



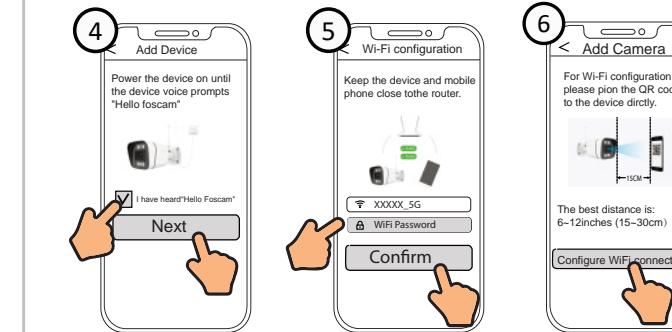
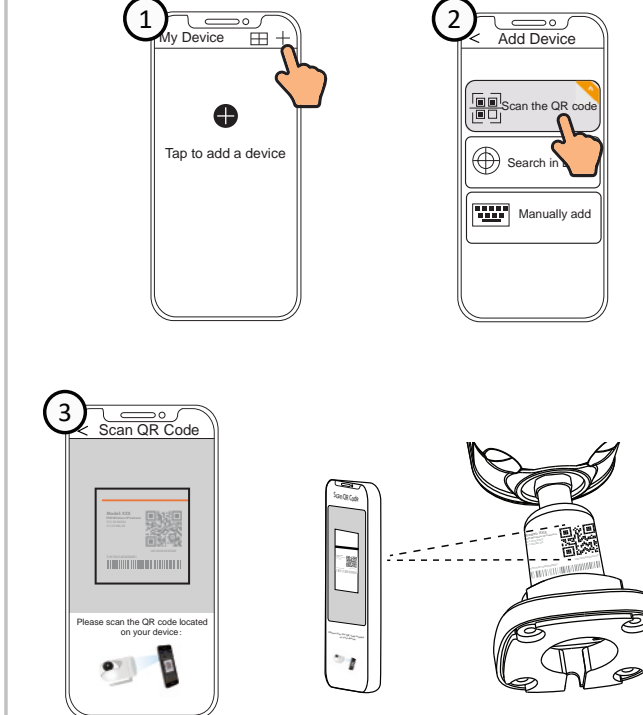
3. Make sure that your smart phone is connected to your WiFi router.



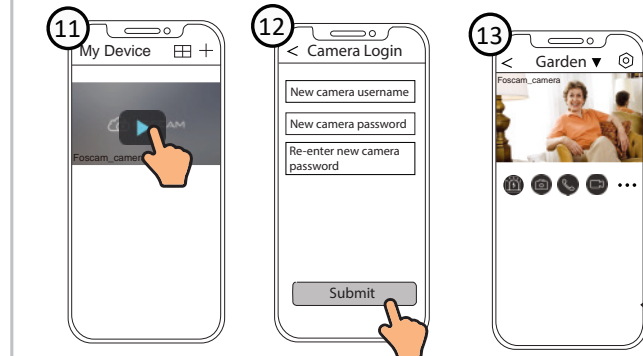
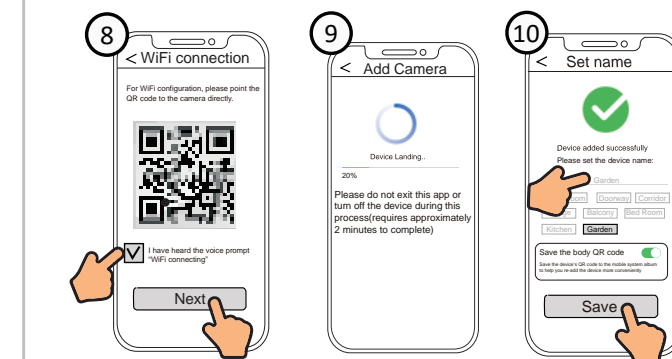
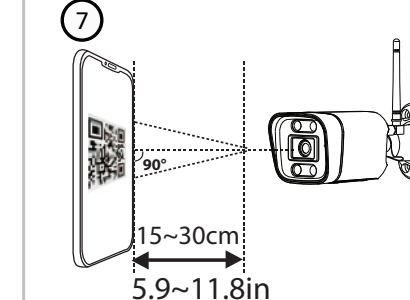
4. Open the foscam APP and please register a Foscam account, or sign in if you have one already.



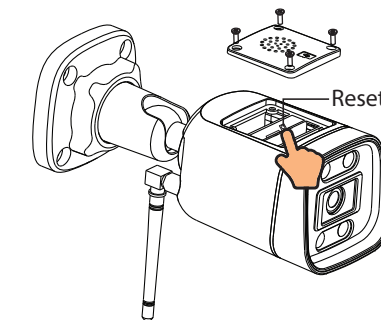
5. Follow the steps below:



Tips: Please place the QR code on the phone screen about 15 to 30cm (5.9 to 11.8in) away, and if you encounter difficulties you can try to move the screen slowly around 15 - 30cm (5.9 - 11.8in).



Note: If the adding process fails, please reset your camera and try adding again according to the above method.



<p>FCC Warning</p> <p>15.19 Labeling requirements. This device complies with part 15 of the FCC Rules. Operation is subject to the following two conditions: (1) This device may not cause harmful interference, and (2) this device must accept any interference received, including interference that may cause undesired operation.</p> <p>15.21 Information to user. Any Changes or modifications not expressly approved by the party responsible for compliance could void the user's authority to operate the equipment.</p> <p>15.105 Information to the user. Note: This equipment has been tested and found to comply with the limits for a Class B digital device, pursuant to part 15 of the FCC Rules. These limits are designed to provide reasonable protection against harmful interference in a residential installation. This equipment generates uses and can radiate radio frequency energy and, if not installed and used in accordance with the instructions, may cause harmful interference to radio communications. However, there is no guarantee that interference will not occur in a particular installation. If this equipment does cause</p>	<p>harmful interference to radio or television reception, which can be determined by turning the equipment off and on, the user is encouraged to try to correct the interference by one or more of the following measures:</p> <ul style="list-style-type: none">-Reorient or relocate the receiving antenna.-Increase the separation between the equipment and receiver.-Connect the equipment into an outlet on a circuit different from that to which the receiver is connected.-Consult the dealer or an experienced radio/TV technician for help. <p>FCC RF Radiation Exposure Statement:</p> <p>1.This Transmitter must not be co-located or operating in conjunction with any other antenna or transmitter.</p> <p>2.This equipment complies with RF radiation exposure limits set forth for an uncontrolled environment.</p> <p>This equipment should be installed and operated with minimum distance 20cm between the radiator and your body.</p>
---	--