



# MAKE A DIFFERENCE

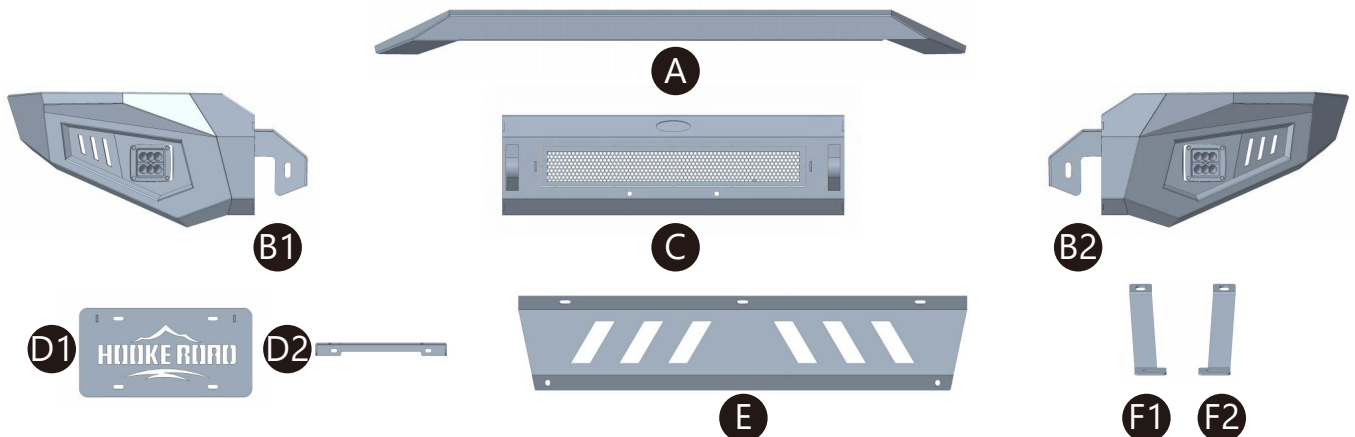
## Front Bumper

**BXG.8822**

(INSTALLATION INSTRUCTION)

**ATTENTION** • Please verify all parts are present and read instructions carefully before starting installation.  
Please feel free to contact your distributor if you have any kind of question about your purchase.

### 1 CONTENTS



A: Bull Bar

B1&amp;B2: Wings

C: Main Body

D1&amp;D2: License Plate Bracket

E: Skid plate

F1&amp;F2: Skid Plate Mounting Brackets

Qty	Part Name	Size(mm)	Picture	Qty	Part Name	Size(mm)	Picture
4	Hex Bolt	M12*35		7	Flat Washer	M8	
6	Hex Bolt	M12*30		4	Flat Washer	M6*12*1	
7	Hex Bolt	M8*20		2	Nylon Round Spacer	M6*12*1.3	
4	Button Bolt	M6*16		4	Nylon Lock Nut	M6	
10	Split Lock Washer	D12		10	Hex Nut	M12	
7	Split Lock Washer	D8		4	Flange Hex Lock Nut	M8	
14	Flat Washer	M12*30*1.5		2	EVA		

### 2 TOOLS REQUIRED

◆ Drive Ratchet Handle

◆ 10mm, 13mm, 19mm Wrench

◆ 4mm Hex Bit Socket

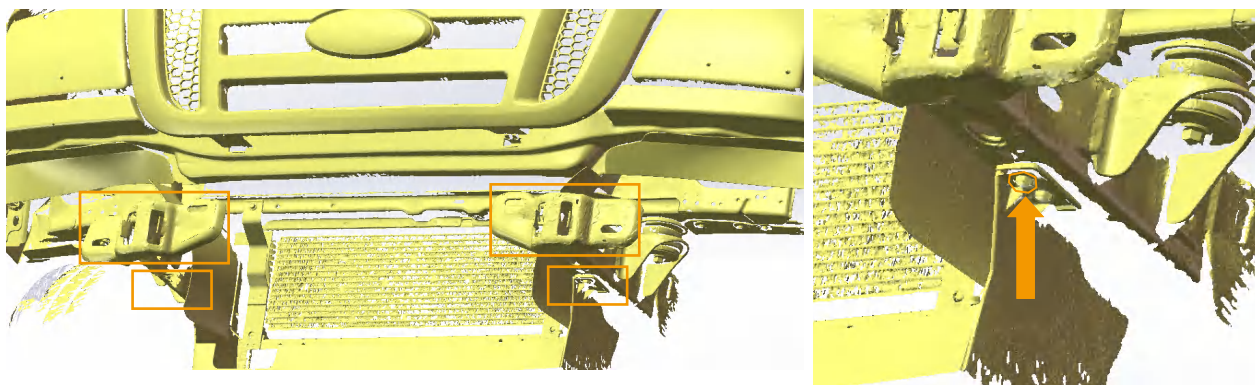
To view online instruction, please  
scan the QR code.



# 3 INSTALLATION INSTRUCTION

## Step 1

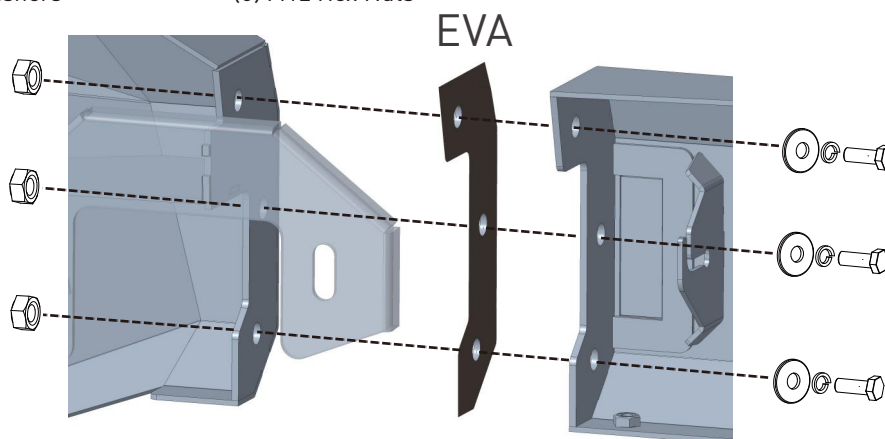
Place the vehicle in park, remove the factory bumper from the frame. Keep the (2) lower bolts for installation.



## Step 2

First, stick the EVA to the main body. Assemble your Hooke Road bumper. Align the outer profile with the inner profile and tighten all hardware. Repeat this step on the other side of the bumper.

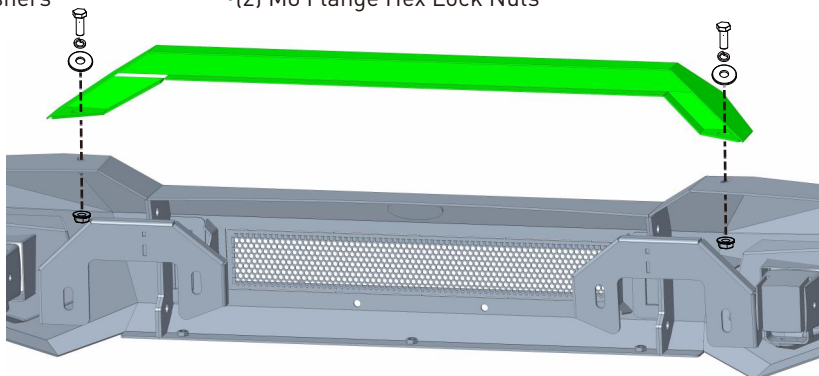
- (6) M12×30 Hex Bolts
- (6) M12×30×1.5 Flat Washers
- (2) EVA
- (6) D12 Split Lock Washers
- (6) M12 Hex Nuts



## Step 3

Secure the bull bar onto the bumper, then tighten all hardware.

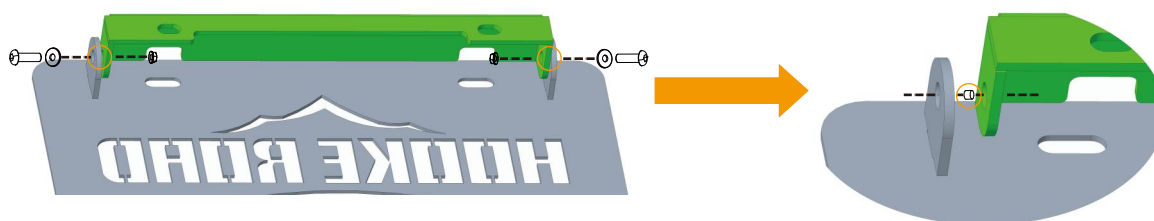
- (2) M8×20 Hex Bolts
- (2) M8 Flat Washers
- (2) D8 Split Lock Washers
- (2) M8 Flange Hex Lock Nuts



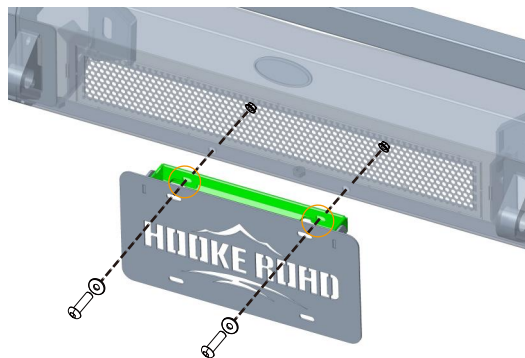
## Step 4

Assemble the license plate brackets, then secure it onto the bumper and tighten all hardware.

- (4) M6×16 Button Bolts
- (2) M6×12×1.3 Nylon Round Spacers
- (4) M6×12×1 Flat Washers
- (4) M6 Nylon Lock Nuts



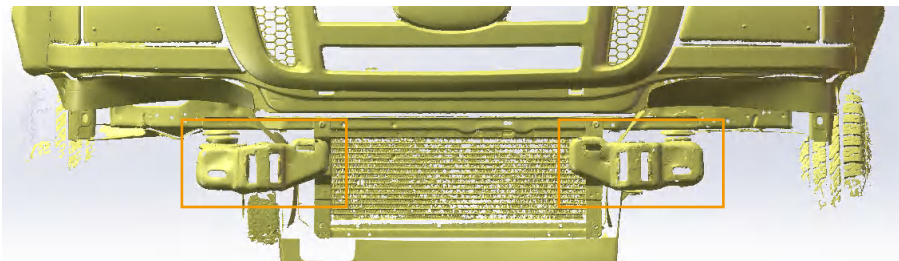
#### Step 4



#### Step 5

Place the bumper onto the frame rails, then secure it to the vehicle frame. Adjust it to the desired position, then tighten all bolts.

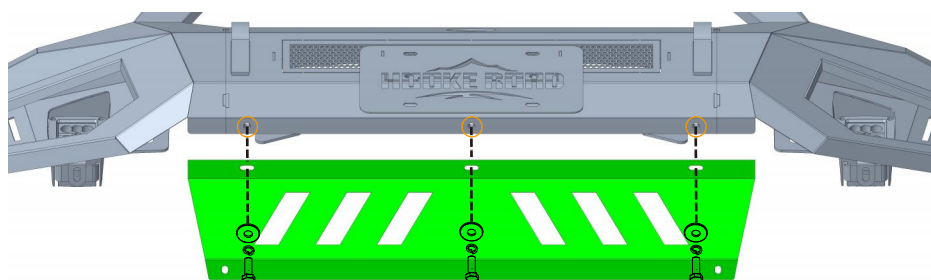
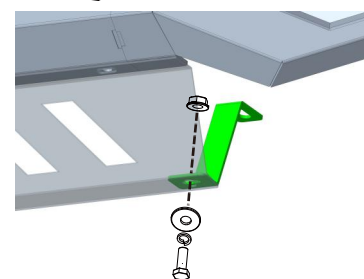
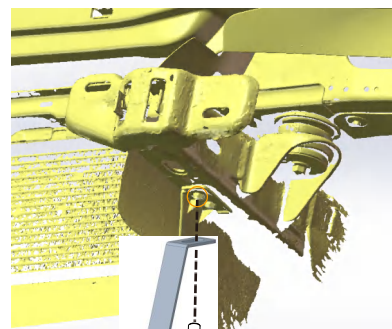
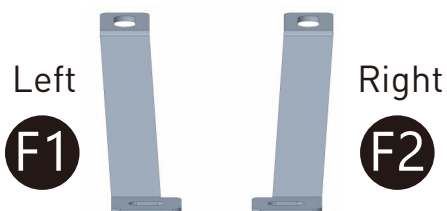
- (4) M12×35 Hex Bolts
- (4) D12 Split Lock Washers
- (8) M12×30×1.5 Flat Washers
- (4) M12 Hex Nuts



#### Step 6

Secure the mounting brackets to the vehicle and the skid plate to the bumper. Connect the skid plate to the brackets, then tighten all hardware.

- (5) M8×20 Hex Bolts
- (5) D8 Split Lock Washers
- (2) Factory Bolts
- (2) M8 Flange Hex Lock Nuts
- (5) M8 Flat Washers



#### Step 7

The installation is complete. We hope you enjoy a wonderful off-road life with this quality Hooke Road product!

