

# FutureFit Ultra2

## QUICK START GUIDE



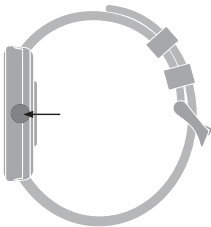


1

## "GloryFit" APP download

1. Scan the QR code on the left to download the APP
2. Install the APP, please register and login according to the interface prompts

\*Compatible: IOS10.0 or above/ Andriod5.0 or above.



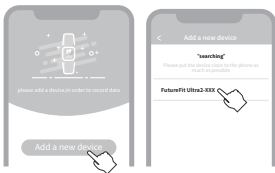
2

## Power ON

Press and hold the upper button for 5 seconds to turn on

## Power OFF

Press and hold the upper button for 3 seconds to turn off



3

## Set up and pair

1. Turn ON the Bluetooth in your smartphone
2. Open the GloryFit, go "Device", "+ Add a new device"
3. Search Bluetooth device & Select the "FutureFit Ultra2" for binding



## On home screen

- Swipe down to enter the main menu
- Swipe up to enter the messages
- Swipe left to enter activity data
- Swipe right to split screen view



## Main Menu

Phone call

### Sub menu style

Do not disturb

Mute

Brightness

### Raise wrist setting

Search

Torch

Battery

Settings

— — —



## Sub-Menu

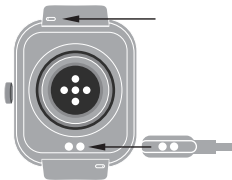
- Exercise data can view steps, distance, calories
- The phone's information will be synced to the watch
- Health monitoring: heartrate, blood oxygen, sleep

Enjoy more on FutureFit Ultra2 .....



## Phone Calls

- 1.Ensure the Ultra2 is connecting with & nearby your phone within 10 meters .
- 2.ENABLE the Call functions.
- 3.Go call settings in the Gloryfit APP.



## Replace the strap

Slide the spring pin and hold it to remove the watch strap, Then connect the watch strap that needs to be replaced to the watch.

## Charging

To charge the watch, place the watch flat and make sure that the back of the two metal holes are aligned with the metal tip of the charging head.

## Product parameter

Waterproof rating: IP68 Waterproof

Sensor: 3 axis G-Sensor

Battery capacity: 300mAh

Synchronization method: Bluetooth

Resolution: 240\* 280 pixels

Display screen: 1.85 inch IPS Display

Working time: about 7-25 days

Working temperature: -10C~50°C

Compatible system: IOS 10.0 or above, Android 5.0 or above

## Packing list

FutureFit Ultra2 Watch x 1

Charging Cable x 1

Quick Start Guide x 1

## Regulatory Information

To view regulatory information, please go to Settings-About-Regulatory Information

## Note

**Please read the instructions before use:**

- The company reserves the right to modify the content of this notice without notice. According to normal circumstances, some functions are different in specific software versions.
- The product should be charged for more than 2 hours before use, but avoid prolonged charging in an unmanned environment when charging.
- Please attach the magnetic charging cable to the charging port of the bracelet automatically.
- Please use the input voltage: 5V/1A or 5V/2A charging head, with the original charging cable provided by the manufacturer.
- Before using the product, please download the login application to the mobile phone, which can use the wristband time to set personal information.

## Precautions

Please read this manual first to ensure safe and correct use.

- The data of this product is for health management reference only.  
Please do not use it as medical data.If any abnormal body data is found, it should be subject to hospital testing.
- The waterproof rating of the watch is IP68 Waterproof.  
You can use it normally in life situations such as handwashing, raining, etc. Please do not put the watch in hot water, do not perform operations such as underwater pressing or deep diving, and do not expose the watch to corrosion liquid to prevent damage to the watch.



## Documentation & Help

Need help or more information? Please scan QR cod.  
You can also visit GloryFit APP for frequently asked questions.





1.85 inch IPS Display



IP68 Waterproof



Heart Rate



Blood Oxygen Monitoring



Bluetooth Calling



Up to 7 Days Daily Use



Alarm



Notifications Sync



<http://www.hifuturegroup.com/>

MAKES LIFE  
MORE VALUABLE

Made by ShenZhen Future Access Technology Co., Limited



[www.hifuturegroup.com](http://www.hifuturegroup.com)

Designed in USA, Assembled in China