



Siveillance Control Pro

Siveillance Control Pro

Security Management for large and multi-site Companies or Critical Infrastructures



Siveillance™ Control Pro is designed to support security management for,

- Critical infrastructure sites
- Industrial complexes
- Campus-type environments
- Multi-site applications such as financial institutions and banks

Market

Large and multi-site Companies or Critical Infrastructures

Industrial



Campus
Facilities



Public
Transport



Utilities



Airports



Banks



Hospitals



Government



Customer Requirements & Needs

- **Safety** for employees and externals, **#1 priority**
- Manage **risks** and reduce **operational costs**
- Extensive need for **security policies** and **response workflow**
- Need for a **centralized display** of alarms / incident management
- **Consolidation** of **multi-vendor subsystems (Video, Access etc.)**
- Consistent **logging** and **reporting** of all events for effective auditing



Siveillance Control Pro

Caters to the current trends for multi-site Critical Infrastructures



One central security system unifying multiple corporate locations



Harmonization of security sub system landscape across all company locations



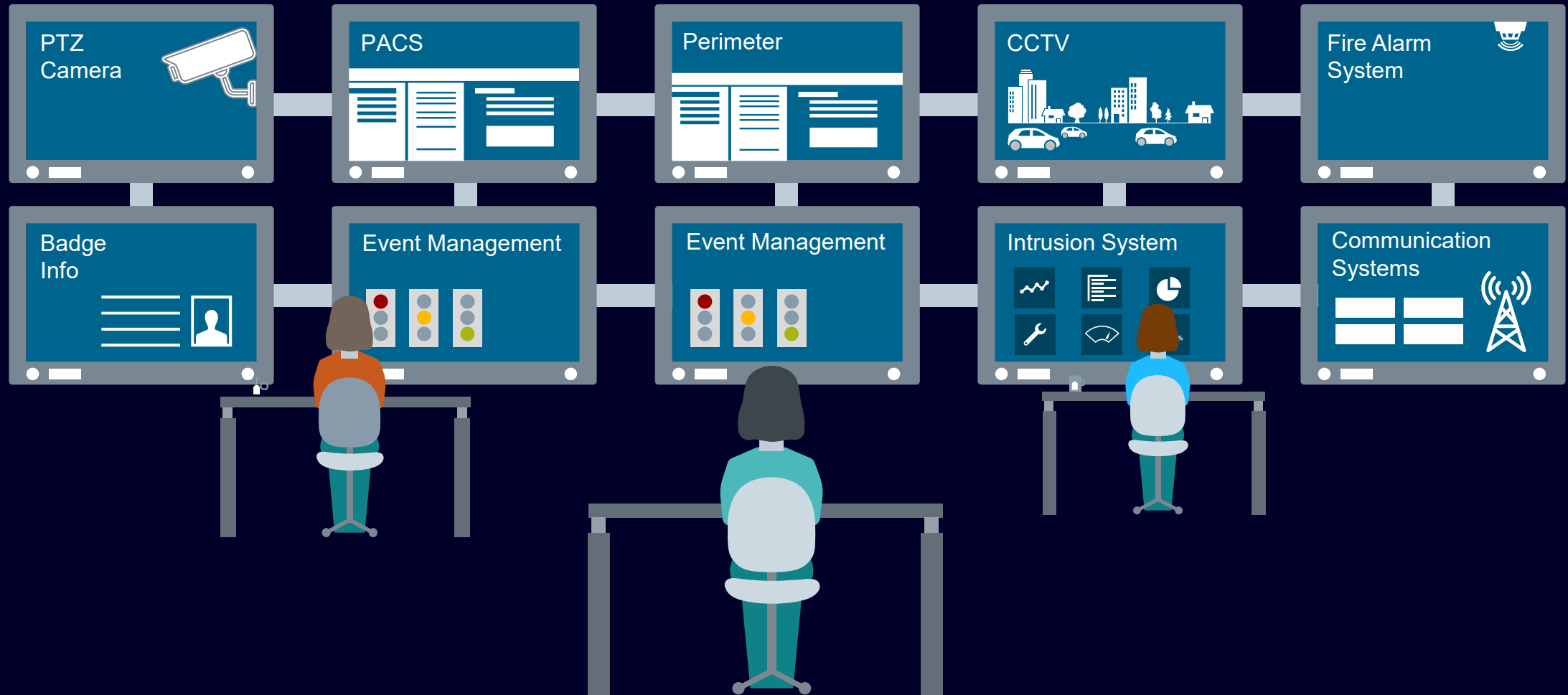
Worldwide corporate standards for processing incidents



Centralized monitoring of company group-wide security processes

Current Situation in Security Operation Centers

Too many dispersed applications



Unify Operations with Siveillance Control Pro



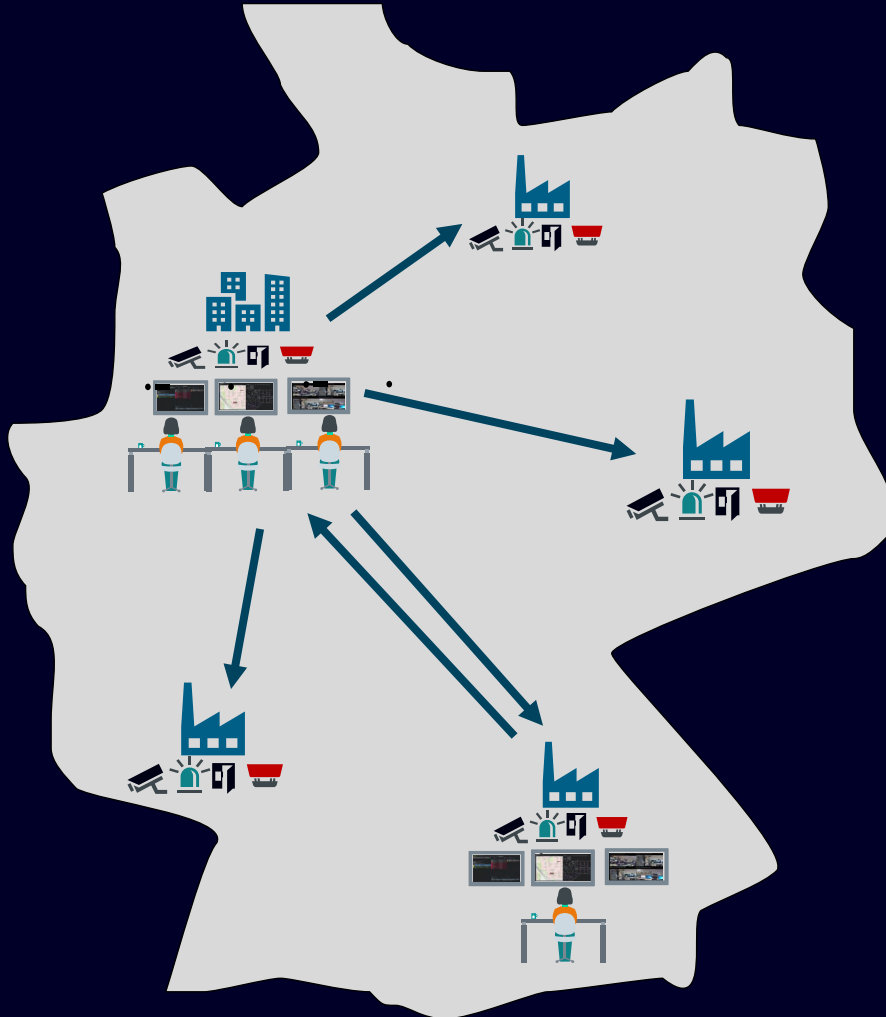
Siveillance Control Pro

Control Room example – Unified operations



Siveillance Control Pro

Capable of managing multiple facilities



Multi-site enabled

Supports customers who manage **multiple** sites

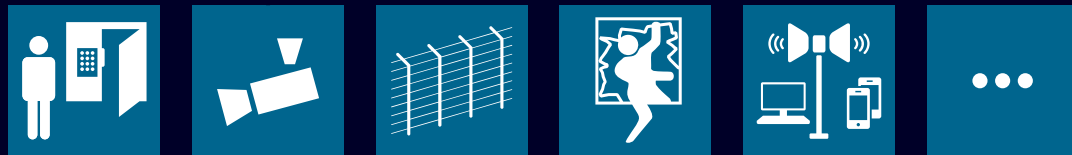
Control events, resources etc. for **multiple locations** through **one single instance**

Scalable for future expansions

Enable **efficient usage** of **control centers** and **operating resources**

Control Room A can undertake tasks from **Control Room B** and vice versa

Siveillance Control Pro – Advanced incident management



PSIM & Command and Control features for advanced incident management

Advantages

- ✓ Future-proof landscape by utilizing **open and flexible architecture**
- ✓ Connect new sites or devices with simple **scalability** so you never compromising performance
- ✓ **Maintain business continuity** through proven redundancy concepts that provide the maximum protection against cyber attacks
- ✓ Skilled **global project execution Team** to support decommission of the legacy system and smooth installation of the new system
- ✓ **Centralized monitoring of alarms/notifications** allow for companywide security processes including audit compliance log
- ✓ **Faster incident response time** and increased people safety through interactive visualization functionality
- ✓ **Workflow-based decision support** increases effectiveness while minimizing errors
- ✓ **Simple and efficient operations** through modern and intuitive user interface

Siveillance Control Pro – Key Features



Secure Platform

End to end encryption

Redesigned authentication and **authorization concept** focused on Single Sign-On compliance with Active Directory/LDAP

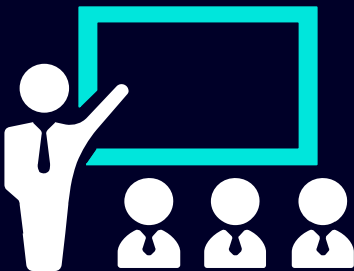
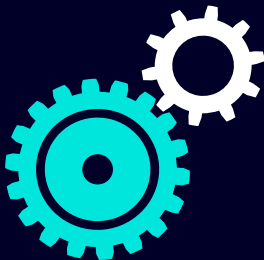
Latest component patches for **security, performance, and scalability**

Siveillance Control Pro – Improve business continuity

Control Pro Redundancy Options

Optimal performance support utilizing Control Pro **Archive module** to reduce information clutter

Database level support for clustering with **Oracle Real Application Cluster (RAC)**



Operating system level clustering for zero down-time failover with **Pacemaker**

Server level availability support with **VMware High Availability**

Customer Needs

Continuous **security operations management**

Incident and crisis management capabilities with **maximum availability**



Customer Benefits



Improves **business continuity** by providing multiple levels of redundancy

Scalability for larger multi-site deployments

Critical infrastructure sites can adhere to all **legal** and **business regulations**



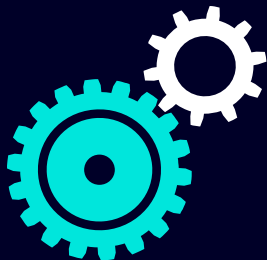
Siveillance Control Pro –

Support enforcement of corporate policies

Control Pro Policy Enforcement

Provides **areas of responsibility** to enforce policy compliance per operator/group/department

Control Pro **Authority module isolates** departmental data



Event **prioritization** and **classification**

Standard Operational Procedures (SOPs) per incident type, area, time, or call-assist

Customer Needs

Digitalize security policies and procedures to meet regulatory and compliance requirements

Enterprise companies need to ensure **security compliance**



Customer Benefits

Security procedures are **documented** and **recorded**



Retroactive **improvement** based on **audit analysis** of past incidents

Powerful data feeds improve response and incident complete times

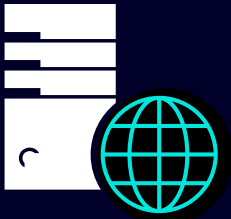
Siveillance Control Pro – Protect against cyber crime

Control Pro “End to End” Data Security

TLS industry standards through customer **certificate support** for all communication

Ensures delivery of **internal communication** via workload queue or message queue

State of the art **SQL streamer** to prevent code injection and man in the middle attacks



Session based client handling

Process development ensures proper server hardening using **industry standards**

Clients have **no direct database connection**

Authorization checks when a client establishes a connection to server

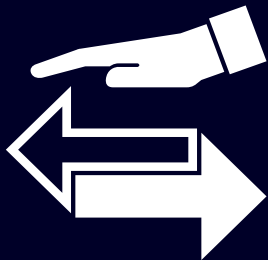


Customer Needs

Market requirements for **highly secured solution**

Cyber Security threat protection

Meet increased customer **IT security requirements** for data protection



Customer Benefits

Highest data security through encrypted data transmission throughout the network



Highest **protection against cyber threats** and **intellectual property espionage**

Features and Customer Benefits at a Glance

Feature
Solutions which support users during critical decision making
Implementation of customers' security policies
Intelligent correlation of subsystem data
Quick visual assessment of the complete landscape and events
Modular and fault tolerant architecture of the software



Customer Benefits
Support users to focus only on what is essential in order to follow clear security processes in critical situations
Customers need their policies and regulatory compliance being upheld and to minimize impact in case of an incident
Provide grouping of related alarms and messages into one event for efficient handling and minimize human error
Bring all views on to a single application to provide Operators a complete picture of the situation and facilities at all times
Allows for deployment with failover and cluster redundancy and site redundancy where a remote backup control center takes over operations, no incidents are lost or missed

