

RECORDER OPERATING INSTRUCTIONS
(For information only)

Preface

Thank you very much for purchasing our brand products, this product is a product developed specifically for today's traffic accident forensics difficulties; at the same time to meet the needs of other occasions, can be used for meeting records, surveillance forensics, location shooting, forensics camera, etc., can let you multi-purpose, let your life more colorful.

The product combines industry-leading technology such as no second loss, seamless loop camera, super wide angle shooting and real time playback with its own display, etc. The unique and stylish streamline design is favoured by the majority of consumers.

This manual will explain in detail how to install, operate, product parameters and precautions. Please read it carefully before use and keep it safe. We hope this product will meet your needs and serve you for a long time! However, as specifications are subject to change due to upgrades, updates etc., please refer to the actual product without prior notice. The manufacturer reserves the right to change the technology directly without prior notice.

Copyright infringement / privacy notice

Please note that this product is intended for personal use only and should not be used in such a way as to infringe national or international copyright/privacy laws. This means that the recorded images are for personal use only and are not to be distributed to the public; in addition, in some cases the use of this product to record images of performances, exhibitions or commercial events may infringe the copyright or legal rights of others.

Installation instructions

This product should be installed close to the rear view mirror for the best possible view.

This product should be installed close to the rear view mirror for the best possible view.

Make sure that the lens is within the windscreen wiper range to ensure a good view, even in rainy conditions.

Do not touch the lens with your fingers, as grease from your fingers may remain on the lens and cause unclear video or photography, so please clean the lens regularly.

Caution

- ◆ Do not disassemble the machine yourself to avoid affecting the scope of the warranty.
- ◆ Please find a professional for the modification of the power line.
- ◆ Please do not operate this product while driving to avoid distraction and affect driving safety.
- ◆ Due to the development of technology, we may make some changes or upgrades to the software or hardware, resulting in inconsistencies with the manual, we will no longer issue a change notice, please take the user to
- ◆ We ask the user to refer to the actual product, please forgive us!

Product Accessories Check

If there are any missing or damaged items, please contact your dealer immediately.

Standard / Optional



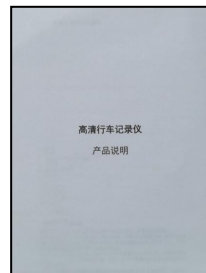
Fixed bracket



Car charger



Rear view lens (optional)



Electronic manual/warranty card

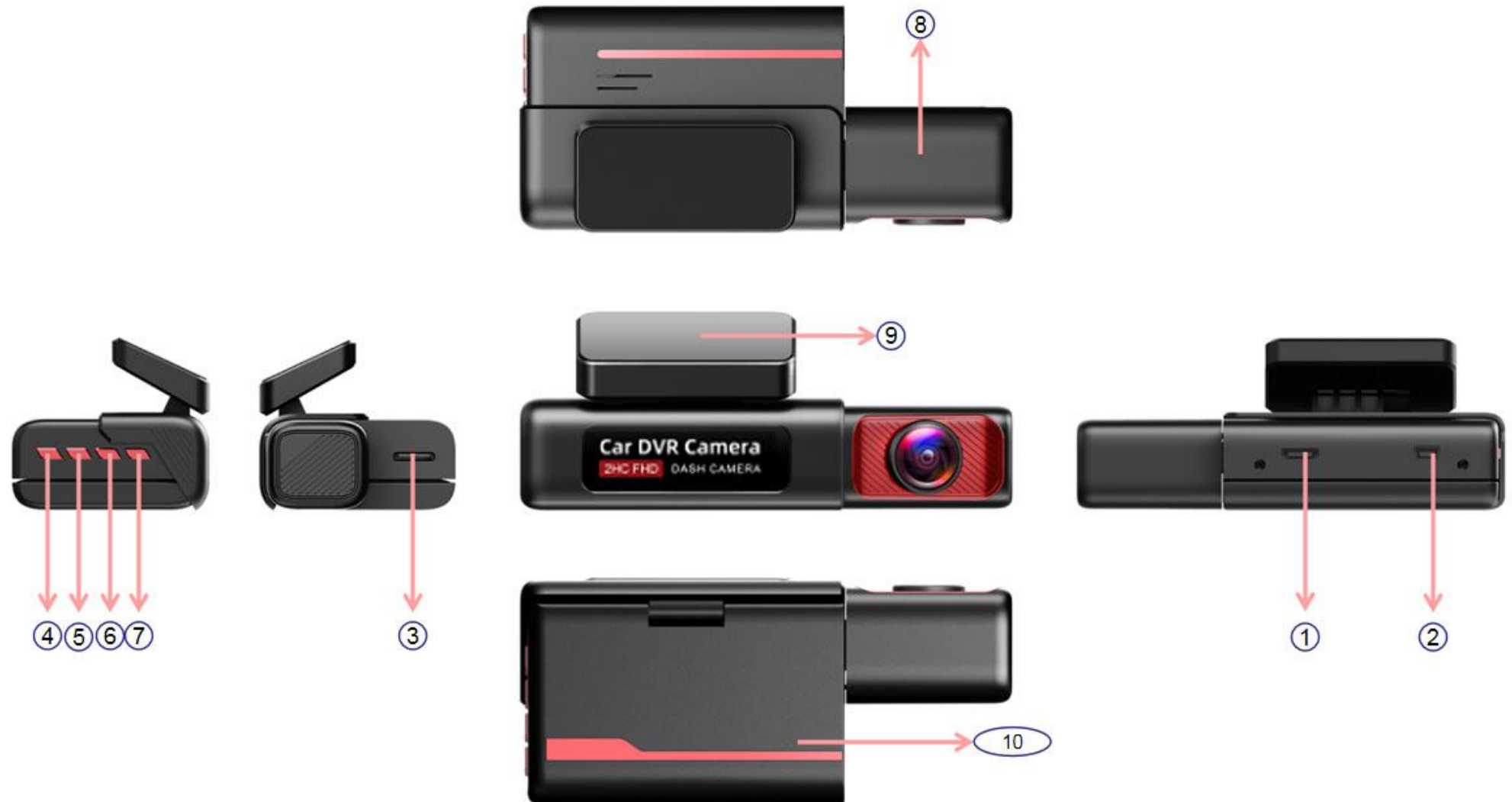


In-car lens (optional)

Choice of interior camera and rear view camera

The above pictures are for reference only, please refer to the actual product!

Product construction description
(Image for reference only)



Host button and interface description

No.	Name	Operation Instructions							
1	HDMI interface	rear recording lens interface							
2	USB interface	5V DC power supply interface							
3	TF card slot	TF memory card slot, please follow the correct direction to install							
8	Camera	wide-angle lens							
9	Bracket	mounting bracket							
10	Display	3.0-inch HD display							
Button definition		Video mode		Menu mode		Playback mode		Photo mode	
Operation mode		Short press	Long press	Short press	Long press	Short press	Long press	Short press	Long press
4	OK button	Start/pause video recording	Emergency lock	Confirm button	No function	Confirm button	No function	Camera button	No function
5	Menu key	Switch dongle/ photograph	Open menu	Up key	Return to video	Up key	Return/ Pause	Cut to playback file	No function
6	Down button	Switch the front and back	channels Snapshot	Down button	Return to the video	Down button	Back/ Pause	Switch the front and back recording	No function
7	Power button	Turn off/on the screen	Turn off	Turn off/on the screen	Turn off	Turn off/on the screen	Turn off	Turn off/on the screen	Turn off

Precautions:

1. Insert the memory card: Please insert the memory card in the correct direction as prompted by the memory card notch on the device, press the memory card until it clicks and insert it in place.

Since the video storage of the recorder has a high operating speed to the card, note that the memory card must be a high-speed card (above CLASS10).

Note: For the first use of a new card, it must be formatted and matched in this machine.

2. Take out the memory card: Press the memory card to eject the slot.

Note: When the device is turned on, do not remove or insert the memory card to avoid damage to the memory card or loss of files.

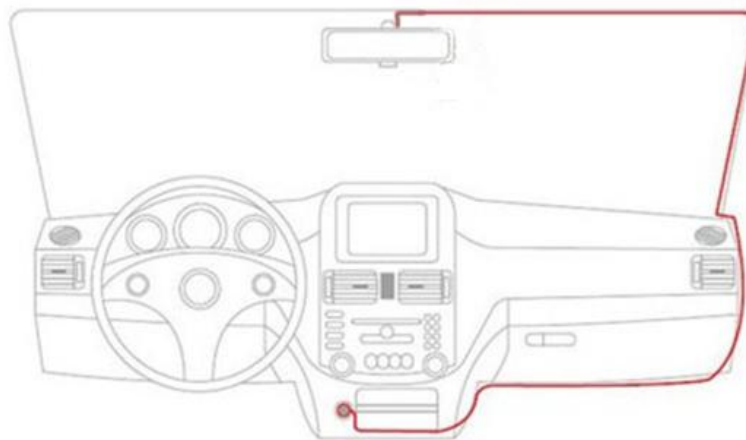
3. Installed on the front windshield in the car

Remove the 3M adhesive paper or suction cup (optional) of the bracket of the device and fix it on the front windshield.

4. Installation:

connect power supply

Please use the original charger that comes standard with the factory to start the device and charge the built-in battery. Connect one end of the car charger to the USB port of the device, and plug the other end of the car charger into the cigarette lighter port in the car. Once the car engine is started, the device will automatically turn on.



Note: When wiring, the car charger extension cable can be hidden and installed along the top decorative panel of the car windshield, as shown in the figure above.

Logger Initial Settings

To set the date and time :

1. In standby mode, press the menu button to enter the menu, the menu is divided into "**video settings**", "**detection settings**", "**system settings**", "**about**".
2. Press "**M key**" to switch to "**System settings**" and press the key to switch to date setting and time setting;
3. Press "**Up and down keys**" to switch the selection arrows, press "**OK**" to select the current year, month and time, and the device will automatically save ;
4. After setting the date and time, press and hold the "**M key**" to exit the setting;

Recorder camera operation

1. When the car engine is started, the device is automatically switched on and starts recording. When the engine is switched off, it will automatically stop recording.
2. The recorder can pause or start recording manually by pressing the "**OK**" key in the recording mode.

Video playback operation

1. In standby mode, press "**M key**" once to enter the video preview interface;
2. Press the "**up and down keys**" to select the video to be played, and press the "**OK**" key to replay the video;
3. In the state of video playback, press the "**up and down keys**" to switch the previous, pause/play, next, and delete options, and press OK to execute;
4. In playback mode, long press the "**down button**" to return to the previous directory, and long press "**OK**" to switch the front F/back R video directory;
5. Long press the "**M key**" to choose to play "**normal video**", "**locked video**", "**picture**";

Note: Ordinary video refers to the video that is normally recorded, and the video is automatically looped over when the video is full; locked video refers to the video with a protection lock, this type of video does not participate in loop coverage; it is manually locked or generated in an emergency state, if the video is The machine will automatically remind you to format the card when it occupies more than 60% of the card space.

The lock function needs to turn on the "collision sensitivity" and "parking monitoring" of the device. The higher the sensitivity, the easier it is to produce locked video. It is recommended to set it to "low".

The machine adopts a simple 4-button setting, short press the finger to press the button, long press the finger to hold the button, and see that the machine shows that the operation is letting go, about 2-3 seconds.

Manual one-touch file lock function

Press the lock button in the recording mode, you can lock the current recording file with one key, the locked file will not be overwritten by the loop, and the locked file cannot be deleted (only when doing file deletion operation on the car recorder, if you choose to format the card, then all files in the card including the locked file will be deleted).

Automatic document lock function.

This machine has a built-in three-axis gravity-sensing chip, the vehicle in the process of driving a traffic accident, the vehicle was hit when the machine can automatically lock the current video protection, for the accident investigation and evidence to provide strong evidence!

Warm tips:

Video locking time is based on the length of the video set in the recorder settings menu

The video locking time is based on the recording length set in the recorder setting menu, the loop recording menu has "1/2/3" three gears, If you set the recording time to 1 minute, the video locking time is 1 minute!

AVin input function

The camera supports AVin video input, when used with the rear pull lens, the camera supports picture-in-picture display, automatically switch to the rear pull lens image when reversing and automatic full-screen display.

Warm tip: Pull back the reversing trigger wire of the lens, the red wire is connected to the positive pole of the reversing light, the voltage is less than 12V.

Parking monitoring function

This machine has a parking monitoring function. After the parking monitoring function is turned on, when your car is "struck", the recorder will automatically turn on and record, record the image at the time of the incident, and escort your car.

One key mute function

In standby mode and video mode, press the up button to turn on or off recording.

Special features:

1. Rear view

First, the car charger must be connected to the recorder, and the red wire on the rear camera must be connected to the positive electrode of the reversing light. After the car is started, the device will automatically start the video recording state, and if there is reversing in any state, the reversing image will be displayed. The machine will automatically return to the video mode after the reversing is visible. (This function is not available for special models with reverse control line as negative)

2.RESET reset

If the machine is abnormal or crashes during use, you can press the RESET button through a small needle through the small hole of the shell to reset the machine.

3.USB storage function

Support USB storage mode and USB camera function.

4. WIFI function (in about settings)

Turn on the WIFI function in the WIFI settings.

You can connect to the mobile phone and operate the machine through the mobile phone dedicated APP (Roadcam).

WIFI connection name: CVR150XXXXXX connection password: CVR88888.

There are two ways to download APP :

一、 Enter the app store to download :

For ios system, you can enter the App store and search for "RoadCam" to download

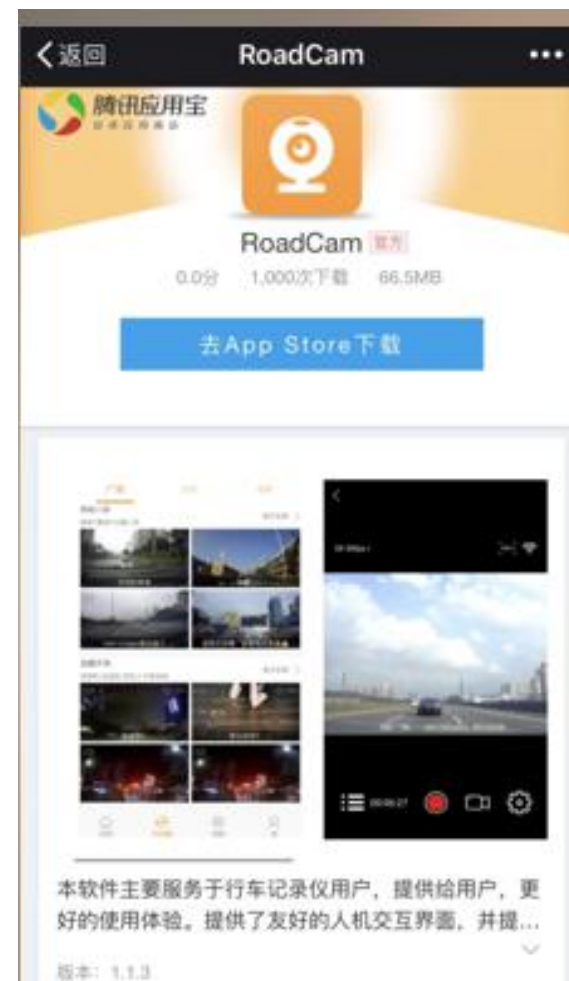


二、2. Scan the QR code ios and android system, both can download "RoadCam" by scanning the QR code APP, the steps are as follows:

(1) Open WeChat or others with a "scan" function
click to download

Capable software, scan the "RoadCam" QR code

(2) Select the corresponding system of the mobile phone,



Product specification sheet:

product name	Logger	Year month day hour minute	stand by
Features	HD camera	Lens aperture	F2.0
video	stand by	Night vision function	stand by
Take pictures	stand by	Motion detection function	stand by
screen size	3 inches	storage card	TF card (support 8GB-64GB)
Lens	A+ level high-resolution wide-angle lens	Reverse image	stand by
Language	Chinese (Simplified and Traditional), English and other languages	microphone	stand by
Video file format	AVI	Built-in audio	stand by
Photo file format	JPG	Time-lapse video	stand by
WIFI	stand by	Current frequency	50HZ/60HZ
Color effect	standard	USB function	stand by
Uninterrupted loop recording	Seamless loop recording, no seconds lost	power supply	5V/2A
On-board switch machine	Support car ignition to turn on, turn off the car	battery	Built-in battery
Post-recording	HD post-recording	Parking monitoring	stand by
		Phone control	stand by

Troubleshooting

Under normal operating conditions, if the product has abnormal problems, please refer to the following methods to solve.

Can not boot:

Check whether the wiring is installed correctly; or take out the memory card and restart the machine.

Automatically stop recording during recording, or do not cycle recording:

Due to the huge amount of high-definition video data, it is possible that the read and write speed of the memory card cannot keep up. Please use a high-speed TF card such as a C10 high-speed card.

The film is not clear:

Please check the lens for dirt and fingerprints. Please clean the surface of the lens before shooting to keep the lens clean and tidy.

Sometimes the effect of the film is good and bad:

The camera effect has a lot to do with the shooting light environment, such as backlight, forward light, and the intensity of the light will cause different video effects.

There are streaks in the image:

This is caused by setting the wrong "source frequency" under fluorescent lamps, and the domestic frequency is "50HZ".

Disclaimer

The recorder is an instrument for recording related information such as images and sounds during the driving of the vehicle. Accidents, etc. are only used as an auxiliary reference to avoid user misunderstanding:

Special note: The machine must be in the recording working state before it can record files.

However, the image will be damaged or lost in the following situations:

1. During recording, pulling out the TF card will cause the last recording file to be damaged or lost.
2. Illegal power failure during recording will cause the last image to be damaged or lost.
3. The video film is damaged or lost due to the destructive collision of the machine during the video recording.
4. Excessive collision during the recording process causes the memory card to become loose at the time, which will damage the files at the time or cause the files to be lost.

The audio and video recorded by the driving recorder are for reference only, and our company shall not be jointly and severally liable for any loss caused by bad files or data loss caused by abnormal conditions of the machine.

Hereby declare

Warranty

1. The warranty service is valid only under normal use and does not include man-made damage;
2. Incorrect operation, causing damage to the machine, charge replacement material cost when repairing;
3. If you disassemble the machine yourself, damage the label, etc., violate the national warranty regulations, it is not within the scope of the warranty, and the company has the right not to do after-sales treatment;
4. The warranty card must be provided during warranty. Those who fail to provide or alter the warranty card have the right to treat it as non-warranty;

This device complies with Part 15 of the FCC Rules. Operation is subject to the following two conditions: (1) this device may not cause harmful interference, and (2) this device must accept any interference received, including interference that may cause undesired operation

NOTE: This equipment has been tested and found to comply with the limits for a Class B digital device, pursuant to Part 15 of the FCC Rules. These limits are designed to provide reasonable protection against harmful interference in a residential installation. This equipment generates, uses and can radiate radio frequency energy and, if not installed and used in accordance with the instructions, may cause harmful interference to radio communications. However, there is no guarantee that interference will not occur in a particular installation.

If this equipment does cause harmful interference to radio or television reception, which can be determined by turning the equipment off and on, the user is encouraged to try to correct the interference by one or more of the following measures:

- Reorient or relocate the receiving antenna.
- Increase the separation between the equipment and receiver.
- Connect the equipment into an outlet on a circuit different from that to which the receiver is connected.
- Consult the dealer or an experienced radio/TV technician for help.

Warning: changes or modifications not expressly approved by the party responsible for compliance could void the user's authority to operate the equipment

Radiation Exposure Statement

This equipment complies with FCC radiation exposure limits set forth for an uncontrolled environment.

This equipment should be installed and operated with minimum distance 20cm between the radiator and your body.