

240.00 mm

320.00 mm

### Common product faults

Phenomenon	Cause	Remedy
Cannot start charging	1.The power supply does not meet requirements. 2.Unstable connection of power interface. 3.The charging distance is out of range. 4.There are other metal objects in the charging area.	1.Replace the adapter that match. 2.Reinsert the power socket. 3.using within the specified distance. 4.Remove metal foreign bodies
Charging is slow	The temperature of product is too high	1. Keep reasonable space for heat dissipation 2. Please wait until the temperature drops to room temperature before using the device

### Hazardous Substance Declaration

 This mark is the product pollution control mark, the number of which represents the environmental service life. In this period of time, under normal conditions of use harmful substances will not cause greater pollution to the environment or damage to human life and property.

Name of parts	Hazardous substance					
	Lead (Pb)	Mercury (Hg)	Cadmium (Cd)	Hexavalent Chromium (Cr(VI))	Polybrominated diphenyl ethers (PBB)	Polybrominated diphenyl ethers (PBDE)
Electronic components	×	○	○	○	○	○
Plastic casing	○	○	○	○	○	○
Electroplated aluminum alloy parts	○	○	○	○	○	○
Non-electroplated metal parts	○	○	○	○	○	○
Double faced adhesive tape	○	○	○	○	○	○
Synthetic cork	○	○	○	○	○	○
Sticker parts	○	○	○	○	○	○

This form is in term of Stipulation SJ/T 11364  
○ It means that the content of the harmful substance in a part of the part is lower than the limit requirements specified in GB/T 26572.  
× It means that the content of the harmful substance in a part of the part exceeds the limit requirements specified in GB/T 26572.

#### FCC STATEMENT :

This device complies with Part 15 of the FCC Rules. Operation is subject to the following two conditions:  
(1) This device may not cause harmful interference, and  
(2) This device must accept any interference received, including interference that may cause undesired operation.  
Warning: Changes or modifications not expressly approved by the party responsible for compliance could void the user's authority to operate the equipment.  
NOTE: This equipment has been tested and found to comply with the limits for a Class B digital device, pursuant to Part 15 of the FCC Rules. These limits are designed to provide reasonable protection against harmful interference in a residential installation. This equipment generates uses and can radiate radio frequency energy and, if not installed and used in accordance with the instructions, may cause harmful interference to radio communications. However, there is no guarantee that interference will not occur in particular installation. If this equipment does cause harmful interference to radio or television reception, which can be determined by turning the equipment off and on, the user is encouraged to try to correct the interference by one or more of the following measures:  
Reorient or relocate the receiving antenna.  
Increase the separation between the equipment and receiver.  
Connect the equipment into an outlet on a circuit different from that to which the receiver is connected.  
Consult the dealer or an experienced radio/TV technician for help.  
FCC Radiation Exposure Statement:  
This equipment complies with FCC radiation exposure limits set forth for an uncontrolled environment. This equipment should be installed and operated with minimum distance 20cm between the radiator & your body.

### Product Warranty

The warranty services of repair, exchange and return are provided for wireless charger products in strict accordance with the provisions of Consumer Rights Protection Law of the People's Republic of China and Product Quality Law of the People's Republic of China.

#### The service contents are as follows:

- If any performance fault occurs in the product within 7 days from the day following the purchase (signature for receipt), you can enjoy the return or exchange services free of charge after testing and confirmation by the after-sales service center;
  - If any performance fault occurs in the product within 8-15 days from the day following the purchase (signature for receipt), you can enjoy exchange or repair services free of charge after testing and confirmation by the after-sales service center;
  - If any performance fault occurs in the product within 1 year from the day following the purchase (signature for receipt), you can enjoy repair services free of charge after testing and confirmation by the after-sales service center;
- Non-warranty Provisions**  
The warranty services of repair, exchange and return are not provided in one of the following cases, and only repair is provided for a fee;
- Damage is caused by consumers due to improper use, repair and storage;
  - Damage is caused due to the repairs not performed by authorized service providers designated by the Company;
  - No valid warranty services or invoices or proof of purchase can be provided;
  - Damage is caused due to force majeure.

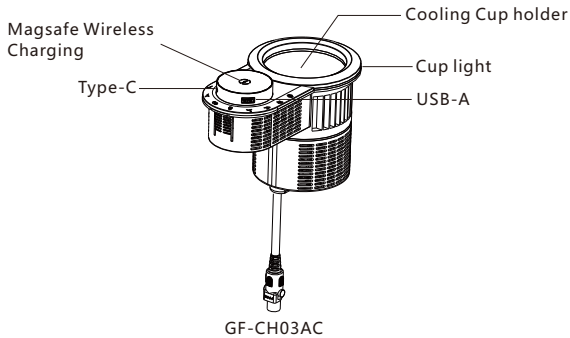
Manufacturer: GCteq Wireless (Shenzhen) Co., Ltd  
Website: <http://www.gcteq.com>

Checked  
Certificated of qualification



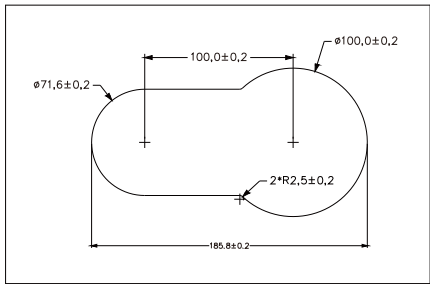
GF-CH03  
User manual

### Instruction



### Installation

- The opening size of the furniture surface is as follows:



### Key function description

Key icon	Function	Notes
	Cooling Cup holder	
	Cup light	
	Keylock	Hold down for 3 seconds
	Reset	
	Open	
	Close	
	Lumbar Open	
	Lumbar Close	
	Head Open	
	Head Close	

### Specification

Product name		Embedded Multi-Functional Integrated Cup Holder	
Model		GF-CH03AC	GF-CH03BC
Input Voltage		DC 24-36V	
Motor control		dual motor	dual motor
Cup-holder refrigeration		Have	Have
wireless charging	Output power	15W Max	15W Max
	Communications standard	Qi2.0	Qi2.0
	Magsafe	Have	Have
USB-A Output		18W Max	18W Max
Type-C Output		20W Max	20W Max
A+C Output		15W Max	15W Max
Sofa light strip		Options	
Protection		Over current, over voltage, short circuit protection	
Product size		200mm*127mm*115mm	