

Quick Start

Juniper Apstra Cloud Services

IN THIS GUIDE

- [Step 1: Begin | 1](#)
- [Step 2: Up and Running | 5](#)
- [Step 3: Keep Going | 8](#)

Step 1: Begin

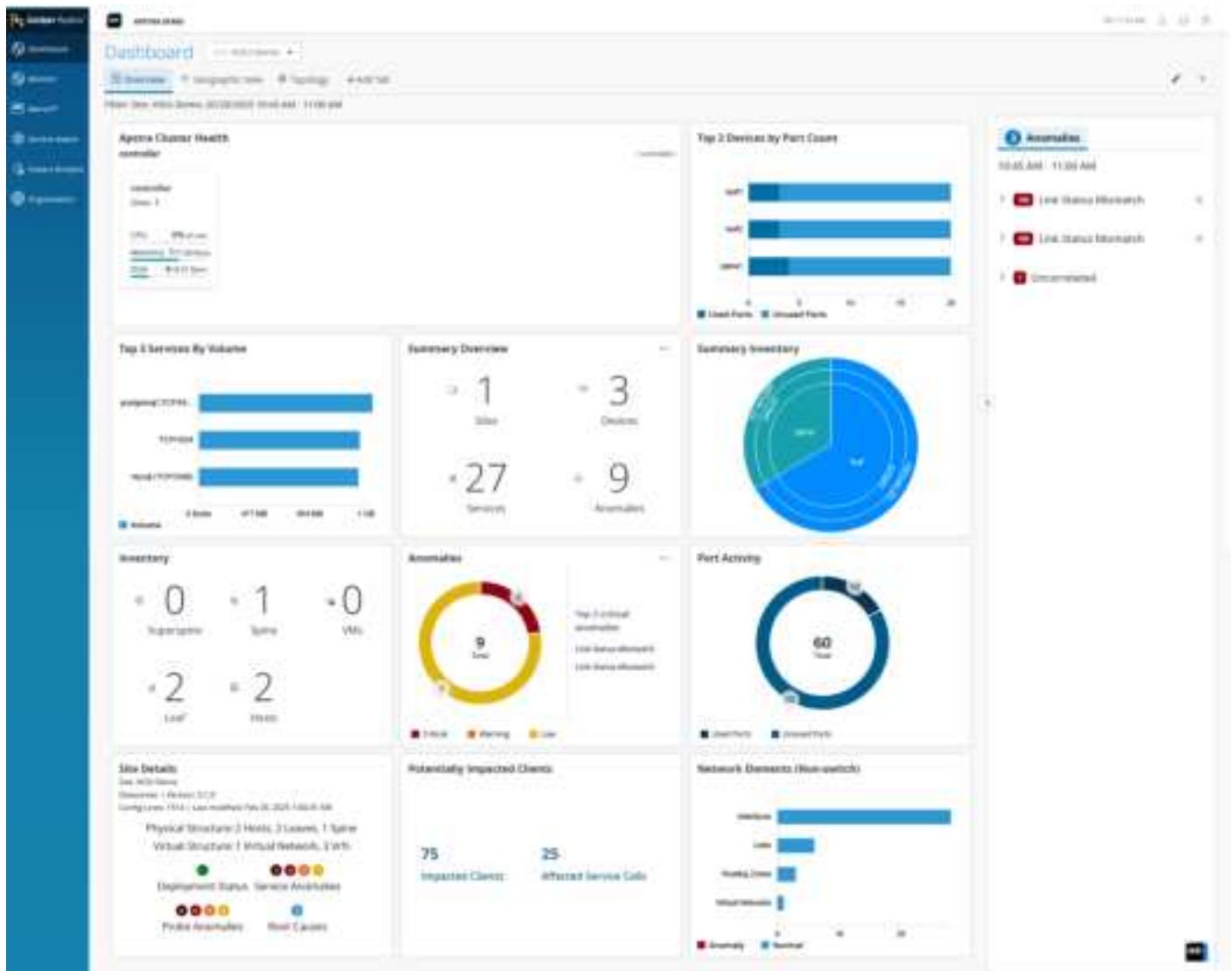
IN THIS SECTION

- [Create Juniper Apstra Cloud Services Account | 2](#)
- [Configure Organization Settings | 4](#)
- [Add Users to Administrator Roles | 4](#)

This guide walks you through the simple steps that you should complete to set up Juniper Apstra Cloud Services and monitor data center events from a data center managed by Juniper Apstra.

Juniper Apstra Cloud Services monitors data centers in real-time, and notifies administrators when there is a network event. It analyzes events and provides actionable recommendations. The Apstra Cloud Services Dashboard provides a bird's-eye view of the data center network. The dashboard provides information about the health and performance of the data center at the organization-level, site-level, and at the site group-level.

Figure 1: Apstra Cloud Services Dashboard



Juniper Apstra Cloud Services also provides a conversational interface that supports natural language processing (NLP), which administrators can use to search for feature or troubleshooting information within Juniper Apstra documentation.

Create Juniper Apstra Cloud Services Account

To access Juniper Apstra Cloud Services, you must create an account in Juniper Apstra Cloud Services and activate your account. You can create an account in Juniper Apstra Cloud Services in one of the following ways:

- Access the Juniper Apstra Cloud Services portal at <https://dc.ai.juniper.net>, create an account, and create your organization.
- Use the invite received from an administrator in Juniper Apstra Cloud Services to join an organization.

To access Juniper Apstra Cloud Services and create an account:

1. Access Juniper Apstra Cloud Services at <https://dc.ai.juniper.net> from a web browser.
2. Click **Create Account** on the Juniper Apstra Cloud Services page.
3. On the My Account page, type your first name, last name, e-mail address, and password, and click **Create Account**.

The password can contain up to 32 characters, including special characters, based on the password policy of the organization.

Juniper Apstra Cloud Services sends you a confirmation e-mail to validate the account.

4. In the verification e-mail that you receive, click **Validate Me**.

The My Account page appears.

5. Click **Create Organization**.

The Create organization page appears.

6. Enter a unique name for your organization and click **Create**.

The New Account page appears displaying the organization that you created.

7. Select the organization you created.

You have successfully logged in to your organization in Juniper Apstra Cloud Services.

To access Juniper Apstra Cloud Services using the invite from an administrator:

1. Click **Access *organization-name*** in the e-mail body of the invite that you received.

The Invite to Organization page appears.

2. Click **Register to Accept**.

The My Account page appears.

3. Enter your first name, last name, e-mail address, and the password that you'll use to access your account.

The password can contain up to 32 characters, including special characters, based on the password policy of the organization.

4. Click **Create Account**.

5. In the verification e-mail that you received, click **Validate Me**.

The My Account page appears.

6. Select the organization for which you received the invite.

You can access the organization in Juniper Apstra Cloud Services. The tasks you can perform in this organization depends on the role assigned to you.

By default, the first user who creates an account and the organization has the superuser privileges in that organization. The Super User can perform functions such as create organization, add sites, add users to various roles, and so on. For more information about roles, see [Predefined User Roles Overview](#)

Configure Organization Settings

A super user in Juniper Apstra Cloud Services can configure organization settings and perform the following tasks:

- View organization name and organization ID and modify the organization name.
- Enable or disable the password policy for the organization and modify the password policy when the password policy is enabled.
- Modify the session timeout policy for the organization.
- Add, modify, and delete identity providers.
- Add, modify, and delete custom roles.
- Configure webhooks for the organization.
- Add Juniper account to link Juniper Networks devices to the organization.
- Generate, edit, and delete API tokens for various roles in the organization.

For detailed information and the steps to configure organization settings, see [Manage Organization Settings](#).

Add Users to Administrator Roles

To add users to an organization, you must be a user with the Super User privileges. You add a user by sending them an invite from Juniper Apstra Cloud Services. When you send an invite, you can assign a role to the user depending on the function they need to perform in the organization.

To add user to the organization:

1. Click **Organization > Administrators**.
2. On the Administrators page, click **Invite Administrators**.
3. In the Administrators :New Invitation page, enter the user details such as e-mail address, first name and last name, and the role that the user should perform in the organization. For more information about roles in Juniper Apstra Cloud Services, see [Predefined User Roles Overview](#).

The first name and the last name can be up to 64 characters each.

4. Click **Invite**.

An e-mail invite is sent to the user and the Administrators page displays the status of the user as Invited.

5. (Optional) Repeat the above steps to add more users to the organization.

Step 2: Up and Running

IN THIS SECTION

- [Adopt Apstra Edge in Juniper Apstra Cloud Services | 5](#)
- [View and Troubleshoot Data Center Events | 7](#)
- [Access Juniper Apstra Cloud Services from Mist | 7](#)

Adopt Apstra Edge in Juniper Apstra Cloud Services

To receive data center events from the Juniper Apstra-managed data center, you need to install Apstra Edge in the data center and then onboard it in Juniper Apstra Cloud Services. Apstra Edge maintains connectivity with the cloud and sends event information it receives from Juniper Apstra to Juniper Apstra Cloud Services. For more information about installing Juniper Apstra Edge, see [Juniper Apstra Edge Setup Guide](#).

To adopt Juniper Apstra Edge in Juniper Apstra Cloud Services:

1. Log in to Juniper Apstra Cloud Services.
2. Navigate to **Organization > Inventory**.



NOTE: If you are a superuser or a network administrator who has access to all sites in the organization, you can also adopt an Apstra Edge device from the **DC Edges** page.

3. Click **Adopt Apstra Edge**.

The Adopt Apstra Edge page is displayed.

Figure 2: Adopt Apstra Edge

Adopt Apstra Edge

Edge Name Management URL Username Password

Flow Server Details ☒

Flow Server Name Management URL Username Password

vCenter Details ☒

vCenter Name Management URL Username Password

Apstra Edge Download location
<https://support.juniper.net/support/download>

4. Enter edge name, management URL, and the user name and password to access Apstra.

- **Edge Name**—Name to identify Juniper Apstra Edge.
- **Management URL**—URL of Juniper Apstra instance installed in the data center.
- **Username**—User name used to log into Juniper Apstra.
- **Password**—Password to log into Juniper Apstra.

5. Configure Apstra Flow Server information.

After the details for **Flow Server Details** are configured, you can view information about the data center network topology, hosts and endpoints, services, and anomalies, if any, on the Service Aware and the Impact Analysis pages.

- **Flow Server Details**—Enable this option to collect flow data from the Apstra instance. Options for configuring the flow server parameters are displayed only if you enable the **Flow Server Details** toggle button.
- **Flow Server Name**—Name of the Apstra Flow server.
- **Management URL**—OpenSearch REST API URL to connect to the Apstra Flow server. The URL must be in the format `https://ip-address:9200`. For example, `https://10.28.52.4:9200`.
- **Username**—Username to log into Apstra Flow server.
- **Password**—Password to log into Apstra Flow server.

6. Configure vCenter details.

After the details for vCenter are configured, you can view information about the VM layer on the Service Aware, the Impact Analysis, and the Dashboard Topology pages.

- **vCenter Details**—Enable this option to collect information about the virtualized environments. Options for configuring the vCenter parameters are displayed only if you enable the **vCenter Details** toggle button. You can configure parameters for multiple vCenters.

- **vCenter Name**—A unique, user-defined name of the vCenter server.
 - **Management URL**—REST API URL to connect to the vCenter server. The URL must be in the format `https://ip-address`.
 - **Username**—Username to log into vCenter server.
 - **Password**—Password to log into vCenter server.
7. Click **Adopt**. The newly added Apstra Edge is listed on the **Inventory** page with the status **Unregistered**. Juniper Apstra Cloud Services generates a registration ID for Juniper Apstra Edge. You must configure this registration ID in Juniper Apstra Edge during installation.



NOTE: You can download the Apstra Edge software from the URL provided in the **Apstra Edge Download Location** field.



CAUTION: Apstra Edge uses the edge registration ID generated by Juniper Apstra Cloud Services to retrieve organization ID, secret, and device ID during installation. These IDs must be stored securely as they cannot be retrieved after the initial setup is completed.

8. Install Apstra Edge and configure the registration ID as described in [Juniper Apstra Edge Setup Guide](#). The registration status of Apstra Edge will be displayed as **Registered**. You can also see the cloud connectivity and Apstra connectivity status as **Connected** indicating that Juniper Apstra Edge is connected with Juniper Apstra Cloud Services and Apstra Edge is connected with Juniper Apstra instance.

View and Troubleshoot Data Center Events

After Apstra Edge is registered, Apstra Cloud Services starts receiving data center events and Apstra flow information from Apstra Edge. You can use the visualizations of the Apstra flow information to understand how the services and clients are utilizing the data center network.

Administrators can view the data center events and anomalies in real-time and resolve them proactively before they impact network traffic. You can view these events and anomalies in the Marvis Actions dashboard and on the Service Aware and Impact Analysis pages. To troubleshoot events, you can access Juniper Apstra from Juniper Apstra Cloud Services.

For more information about viewing and troubleshooting data center events, see [View Data Center Events in Marvis Actions](#), [Access Juniper Apstra from Juniper Apstra Cloud Services](#), and [Impact Analysis](#).

Access Juniper Apstra Cloud Services from Mist

If you manage your enterprise network using Mist and data center using Juniper Apstra, you can monitor data center events too from Mist by linking the organization in Mist with the organization in Juniper Apstra Cloud Services. Once

the organization in Mist is linked to the organization in Juniper Apstra Cloud Services, you can view the total number of data center events on the in **Data Center/Application** on the Marvis Actions page in Mist. To view more detailed information about an event, you need to access Juniper Apstra Cloud Services by clicking the **Data Center Actions** event type under **Data Center/Application**.

You must be a user with Super User or a Network Admin role to perform this task.

To enable Juniper Apstra Cloud Services from Mist:

1. Log into Juniper Apstra Cloud Services.
2. From the **Organization > Settings** page, generate an API token.
3. Log into Juniper Mist portal.
4. Navigate to **Organization > Settings** page.
5. Locate the **Apstra Cloud Services Integration** tile.

Enter the following information:

- **Organization ID**—Copy the organization ID from Juniper Apstra Cloud Services and paste it here.
 - **API Token**—Copy the API token generated in step 2 in Juniper Apstra Cloud Services and paste it here.
 - **API Token Name**—Enter the API token name that you defined in Juniper Apstra Cloud Services.
6. Click **Save**.

The organizations in Mist and Juniper Apstra Cloud Services are linked now. In a few minutes, you'll notice that **Data Center/Application** in Marvis Actions in Mist is active and displays the total number of data center events under the **Data Center Actions** event type.

7. Click the **Data Center Actions** event type under **Data Center/Application** to launch Juniper Apstra Cloud Services. Juniper Apstra Cloud Services opens in a new browser window or tab in read-only mode. Log in to ACS to access all features of the application.

Step 3: Keep Going

IN THIS SECTION

- [What's Next | 9](#)
- [General Information | 9](#)
- [Learn With Videos | 9](#)

What's Next

If you want to	Then
Know more about Marvis VNA for Data Center	Marvis Virtual Network Assistant for Data Center
Learn about event types displayed in Marvis Actions Dashboard	Event Types Displayed in Marvis Actions

General Information

If you want to	Then
Know more about Juniper Apstra Cloud Services	Juniper Apstra Cloud Services Documentation
Learn about new features in Juniper Apstra Cloud Services	Release Notes

Learn With Videos

If you want to	Then
Get short and concise tips and instructions that provide quick answers, clarity, and insight into specific features and functions of Juniper technologies.	See Learning with Juniper on Juniper Networks main YouTube page
View a list of the many free technical trainings we offer at Juniper.	Visit the Getting Started page on the Juniper Learning Portal.