

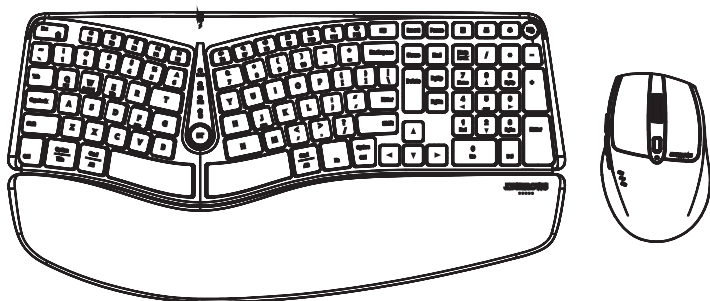
J.BURROWS

.....

INSTRUCTION MANUAL

WIRELESS KEYBOARD MOUSE COMBO

Elite MK400



Bluetooth®

OFFICEWORKS LTD
236-262 EAST BOUNDARY ROAD
EAST BENTLEIGH VIC 3165 AUSTRALIA
MADE IN CHINA

Compatible with:
Windows® 10 or later
Mac OS X 10.10 or later
Android™ 10 or later
iOS system.

Contents



x1



x1



x1



x1



x1



x1

1. Keyboard
2. Mouse
3. USB-A receiver

4. Instruction manual
5. Quick start guide
6. Charging cable

Functions

The shortcut keys are shortcuts to various functions on your device. They are located on the top row of the keyboard.

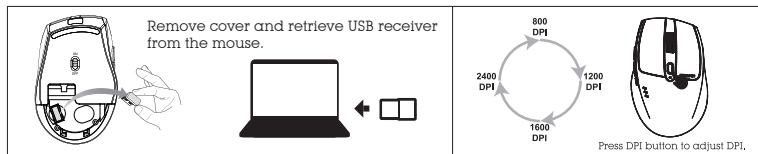
Icon	Mac	Windows	iOS	Android
	Esc	Esc	Esc	Esc
	Brightness -	Brightness -	Brightness -	Brightness - or N/A
	Brightness +	Brightness +	Brightness +	Brightness - or N/A
	Previous track	Previous track	Previous track	Previous track
	Play/pause	Play/pause	Play/pause	Play/pause
	Next track	Next track	Next track	Next track
	Mute	Mute	Mute	Mute
	Volume -	Volume -	Volume -	Volume -
	Volume +	Volume +	Volume +	Volume +
	Copy	Copy	Copy	Copy
	Paste	Paste	Paste	Paste
	Search	Search	Search	Search or N/A
	Select Input method	Select Input method	Select Input method	Select Input method or N/A
	Win switch	Win switch	Win switch	Win switch or N/A
	N/A	Calculator	N/A	N/A
	N/A	Printer	N/A	N/A
	N/A	Setting	N/A	N/A
	Lock screen	Lock screen	Lock screen	Lock screen or N/A

Note

1. Direct to press ESC to F12 for multimedia function. Press Fn+ESC to F12, the F-keys have function.
2. The multimedia keys may vary depending on the versions of Windows, Android, iOS and MacOS.

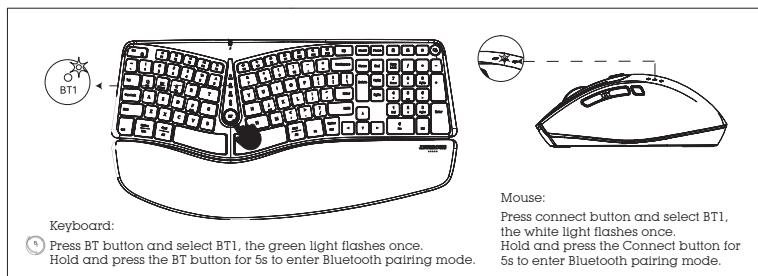
Installation Guide - 2.4GHz Connectivity

- ⏻ | 🔌 Take out USB receiver from the receiver compartment of the mouse bottom.
Turn on the power switch of mouse and keyboard.
Plug the USB receiver in computer port.



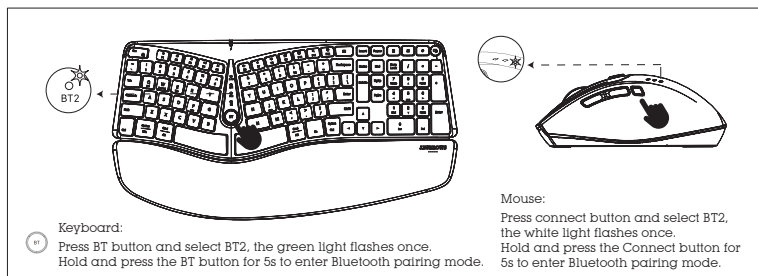
Installation Guide - Bluetooth Connectivity

- 🔗 **Bluetooth®** Connecting to bluetooth device 1.



Now it is in Bluetooth pairing mode. Go to Bluetooth setting on your device and select **Elite MK400 KB/MS**. Follow the onscreen instructions to complete the pairing. The light will turn off once Bluetooth pairing is successful.

- 🔗 **Bluetooth®** Connecting to bluetooth device 2.



Now it is in Bluetooth pairing mode. Go to Bluetooth setting on your device and select **Elite MK400 KB/MS**. Follow the onscreen instructions to complete the pairing. The light will turn off once Bluetooth pairing is successful.

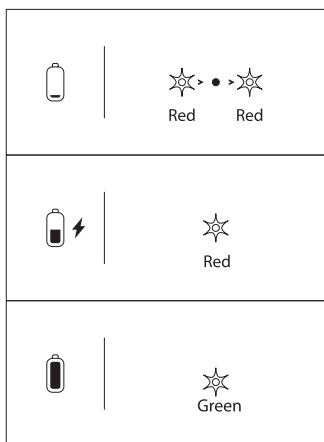
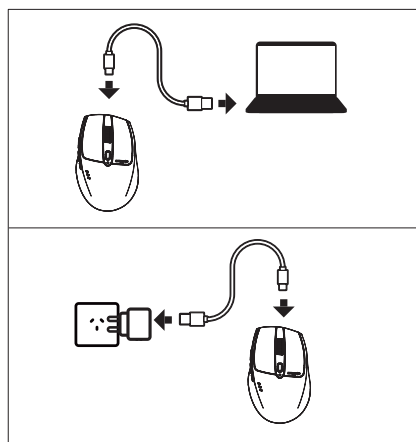
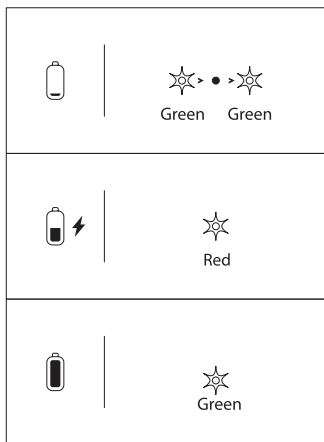
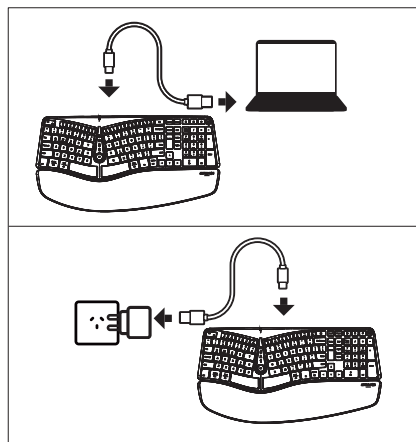
Note

Switching bluetooth devices: After setting up connections with up to 2 bluetooth devices, you can switch among them by press BT button on keyboard and connect button on mouse.

Indicator Light

Keyboard will flash green LED light, mouse will flash red LED light when power is low. Red LED light will be on when charging.

Green LED light will be on when fully charged. Full charging time is approximately 2H.



Note

Fully charge your **Elite MK400** before first use. Before charging, make sure the wireless keyboard and mouse is turned off.

Specifications

- Product Model: Elite MK400
- Officeworks Product Code: JBKB368167
- Bluetooth Version: 4.2
- Rating: 3.7V \approx 2mA keyboard; 3.7V \approx 8mA mouse
- Working Frequency: 2.4GHz
- 3 device connectivity: 2.4GHz x1, Bluetooth 4.2 x 2
- Operating range: 8m
- Receiver: USB-A
- Rechargeable battery: Lithium 500mAh for keyboard
- Rechargeable battery: Lithium 300mAh for mouse
- Dimensions: 449 x 234 x 48 mm keyboard;
108 x 69 x 41 mm mouse
- System Requirements:
Windows[®] 10 or later, Mac OS 10.10 or later
Android[™] 10 or later, or iOS system.

Windows is a trademark of the Microsoft Corporation in the United States and other countries.
Mac and MacOS are trademarks of Apple Inc., registered in the U.S. and other countries.

The Bluetooth[®] word mark and logos are registered trademarks owned by Bluetooth SIG, Inc.
and any use of such marks by Officeworks Ltd is under license.

Android is a trademark of Google LLC.

iOS is a trademark or registered trademark of Cisco in the U.S. and other countries and is used
under license.



Do not connect this cable to products other than Elite MK400 wireless keyboard. Connecting this
cable to other devices might cause damage to both cable and the device.

Product Warranty-valid for Australian customers only

Officeworks Ltd warrants that this product will be free from defects and work as intended for 8 years from the date of purchase by the original customer.

If the product has any defects or does not work as specified during the Warranty Period, Officeworks will, at its election and at its expense, repair or replace the product.

This warranty does not apply:

- to cosmetic damage;
- to damage caused by consumables used in connection with the product (such as batteries);
- where the product has not been used in accordance with all provided instructions;
- to damage arising from fair wear and tear;
- where the product has not been subject to reasonable use;
- where the product has not been intentionally or negligently damaged and/or;
- if the customer has attempted to repair the product.

To make a claim under this warranty, please return your product with your receipt or proof of purchase to your nearest Officeworks store or contact 1300 633 423.

the Australian Consumer Law. You are entitled to a replacement or refund for a major failure and compensation for any other reasonably foreseeable loss or damage. You are also entitled to have the goods repaired or replaced if the goods fail to be of acceptable quality and the failure does not amount to a major failure.

This warranty is provided in addition to any rights you may be entitled to under the Competition & Consumer Act 2010. Our goods come with guarantees that cannot be excluded under the Australian Consumer Law. You are entitled to a replacement or refund for a major failure and compensation for any other reasonably foreseeable loss or damage. You are also entitled to have the goods repaired or replaced if the goods fail to be of acceptable quality and the failure does not amount to a major failure.