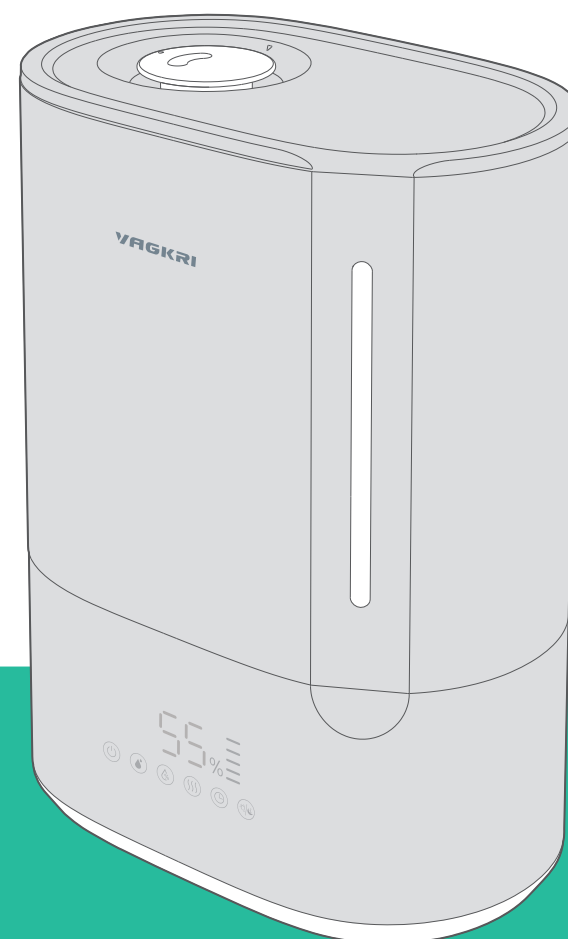


VAGKRI

Ultrasonic

Warm & Cool Mist Humidifier



Manufacturer: Shenzhen Guiyang Network Technology Co., Ltd
Address: 1404K3, East Block, Shengtang Commercial Building, Futian
District, Shenzhen, China

Made in China



Model: VA-HM02
User Manual

CONTENTS

IMPORTANT SAFETY INSTRUCTIONS	01
EXPLORING YOUR HUMIDIFIER	03
LED Display	04
Control Panel	04
USING YOUR HUMIDIFIER	05
Control Functions	05
Additional Features	06
General Operation	07
CARE AND CLEANING	09
General Cleaning	09
Deep Cleaning	11
Cleaning Aroma Box	13
TROUBLESHOOTING	14
WARRANTY AND SERVICE	15

IMPORTANT SAFETY INSTRUCTIONS

READ ALL INSTRUCTIONS BEFORE USE AND SAVE FOR FUTURE REFERENCE

When using an electrical appliance, especially when children are present, basic safety precautions should always be followed, including the following:

INTENDED USE

- This appliance is not intended for use by persons (including children) with reduced physical, sensory or mental capabilities, or lack of experience and knowledge, unless they have been given supervision or instruction concerning the use of the appliance by person responsible for their safety.
- Close supervision is necessary when any appliance is used by or near children. Children should be supervised to ensure that they do not play with the appliance.
- NOT intended for industrial or commercial use. Use the appliance only for intended household purposes as described in this User Manual.

ELECTRICITY SAFETY

- DO NOT immerse the base, power cord or plug in water or other liquid.
- DO NOT operate the appliance with a damaged cord or plug or if the product malfunctions, is dropped or damaged in any manner.
- Always unplug the appliance before cleaning, making any repairs or servicing, or whenever not in use. To disconnect, unplug power cord from electrical outlet. Do not pull on cord.
- IMPORTANT - This appliance has a polarized plug (one blade is wider than the other). To reduce the risk of electric shock, this plug is intended to fit in a polarized outlet only one way. If the plug does not fit fully in the outlet, reverse the plug. If it still does not fit, contact a qualified electrician. Do not attempt to rig this safety feature.

RELATED TO USE

- DO NOT block or cover the nozzle while in operation.
- DO NOT place on or near wet surfaces, or heat sources such as stovetops, ovens, or radiators.
- DO NOT place on carpet or other surfaces that may block the air inlet.
- DO NOT attempt to disassemble, repair, modify or replace any part of your product. All servicing should be performed by qualified personnel only.
- Arrange the appliance and cord away from traffic areas and where it will not be knocked over.
- Always make sure to place the humidifier on a flat, level and secure surface before operation.
- Fill the water tank with clean water only. Never fill with any other liquids.

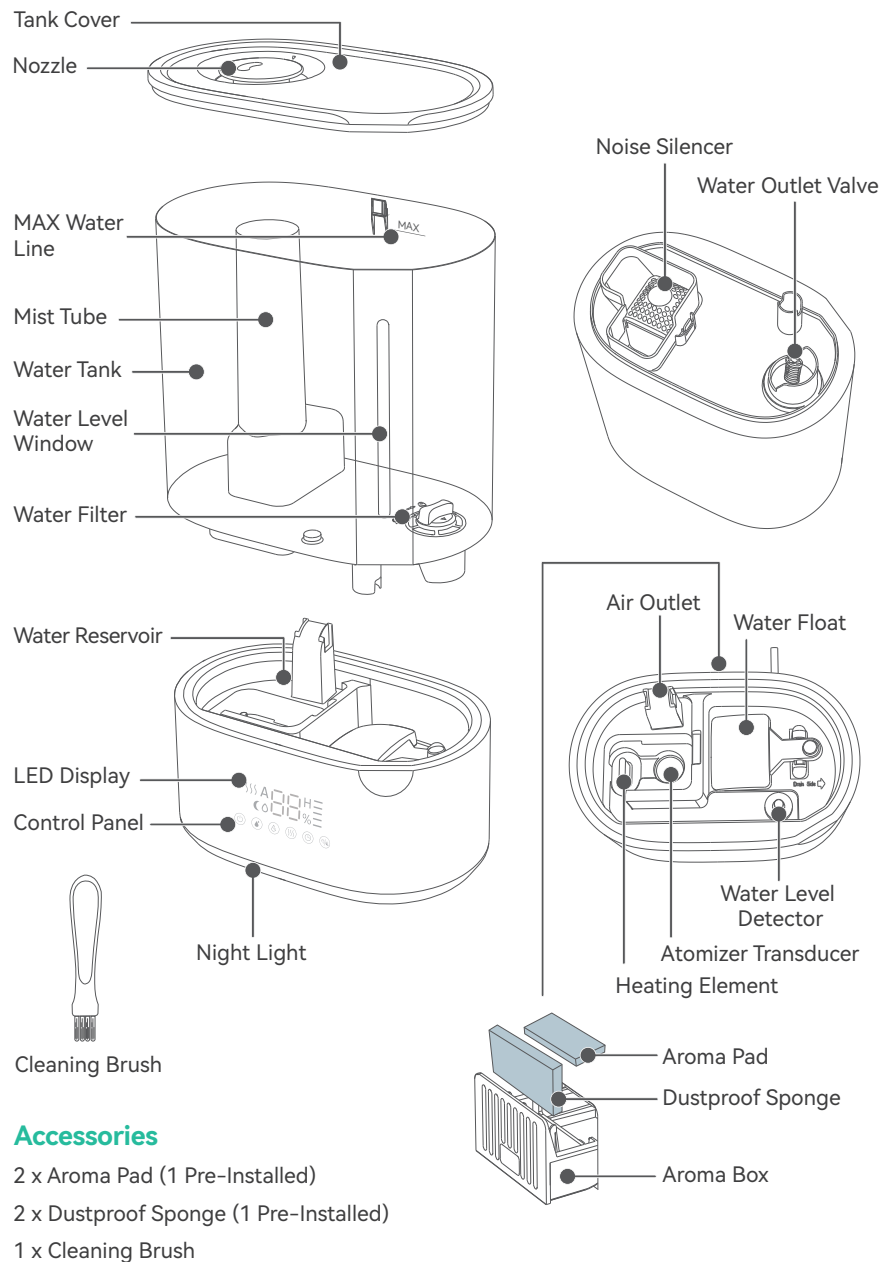
FOR HOUSEHOLD USE ONLY

SAVE THESE INSTRUCTIONS

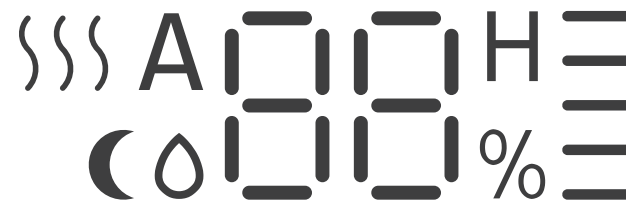
Specifications

Input	120V~ 60Hz
Power	145W Max
Water Tank Capacity	1.59Gal / 6L
Cool Mist Output	100-300mL/h
Warm Mist Output	150-450mL/h
Noise Level	<32dB (Cool Mist) <36dB (Warm Mist)
Run Time on a Full Tank	20-60 Hours (Cool Mist) 13.3-40 Hours (Warm Mist)

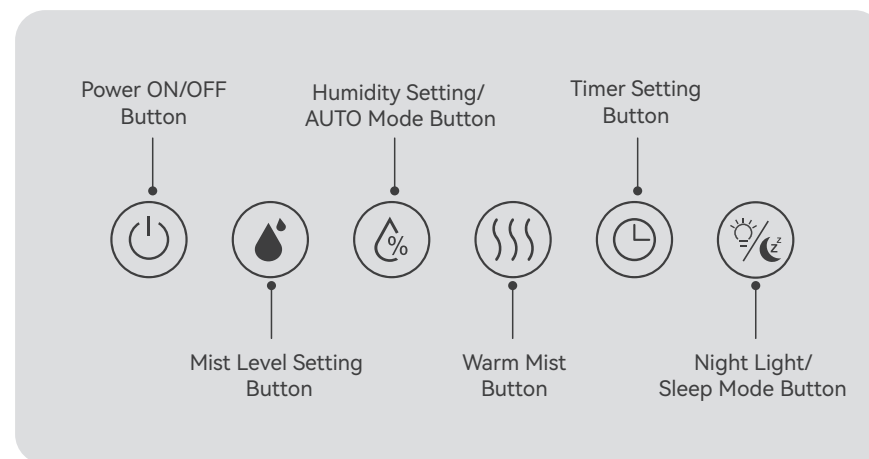
Exploring Your Humidifier



LED Display



Control Panel



Using Your Humidifier

Control Functions



Power ON/OFF

- Tap to turn ON or turn OFF (Standby mode).



Mist Level Setting

- With unit on, tap repeatedly to cycle through 5 mist levels:
— (level 1), = (level 2), ≡ (level 3), ≡≡ (level 4), ≡≡≡ (level 5).


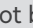


Humidity Setting

- With unit on, tap once to enter Humidity Setting (digit flashes). Then keep tapping to set humidity level (30%–80%). Wait until display stops flashing to confirm your setting.
- Once the set level is reached, the humidifier will automatically stop misting. It will start again when the humidity drops to 5% below the set level.



AUTO Mode

- With unit on, hold for 1.5s to turn on AUTO Mode (A lights up). The humidifier will automatically adjust the mist level or turn it off (Humidity>65%) to maintain a comfortable level of humidity.
- Hold  for 1.5s again to cancel AUTO Mode and enter Humidity Setting.
- Mist level cannot be adjusted under AUTO mode. Tap  will cancel AUTO Mode.



Warm Mist

- With unit on, tap to turn on or off warm mist.
- It may take about 5 minutes for the humidifier to warm up before producing warm mist.



Auto-Off Timer Setting

- With unit on, tap once to enter Timer Setting. Then keep tapping to set Auto-Off Timer (00–12H). Wait until display stops flashing to confirm your setting.
- To cancel, hold for 1.5s, or set timer to 00, or turn unit off.




Night Light

- Tap to turn on (low brightness), then tap repeatedly to cycle through Med, High, OFF and Low brightness level.
- When tapping this button under Sleep Mode to turn on night light, you may need to turn it off manually.




Sleep Mode

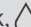
- With unit on, hold for 1.5s to turn on or off Sleep Mode.
- When Sleep Mode is on, only  stays on (50% brightness) display, tap any button to wake up the display. If no operation is done in 5s, the display will turn off again.

Additional Features

Tank Lift-up Protection

If water tank is removed from base,  will flash red and the unit will stop misting automatically. Place tank back and it will resume working.

Low Water Protection

If there is no water in the tank,  will flash red and the unit will stop misting automatically. Refill with water and it will resume working.

Memory Function

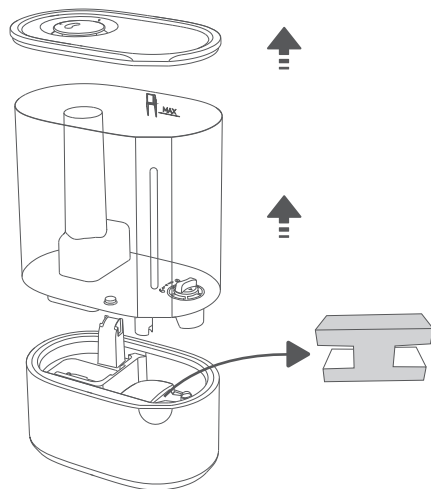
If power is not disconnected, it will always remember your last settings of Mist and Humidity Level when turned back on.

General Operation

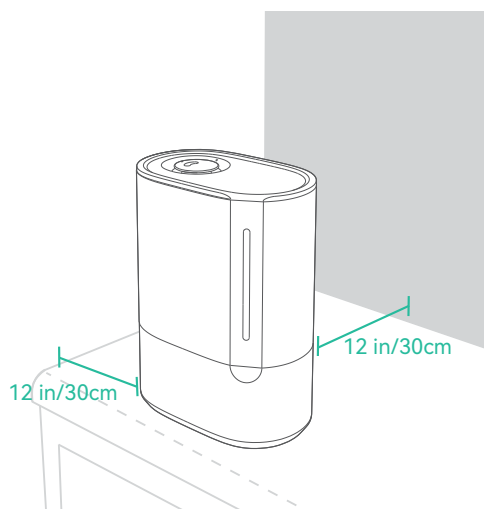


- Do not add water through mist tube nor add directly into water reservoir.
- Do not add essential oils or any sanitizers into the water tank or reservoir.

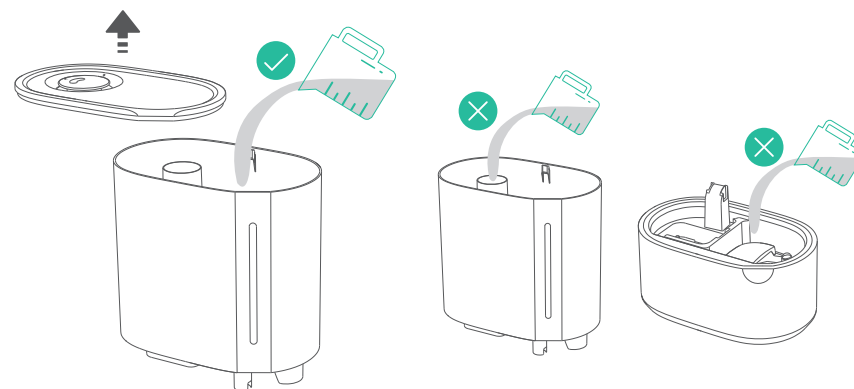
- 1 Remove all packaging. Take water tank off base and remove PE Foam on water float.



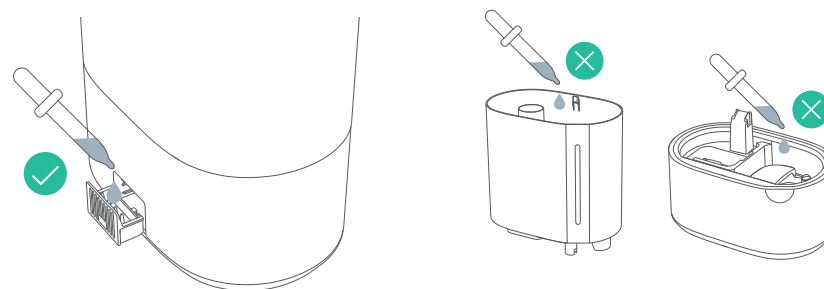
- 2 Locate on a hard, flat surface at least 12 inches away from any walls. Direct mist away from walls.



- 3 Remove tank cover. Fill with purified or distilled room temperature water below MAX line. Place cover back.

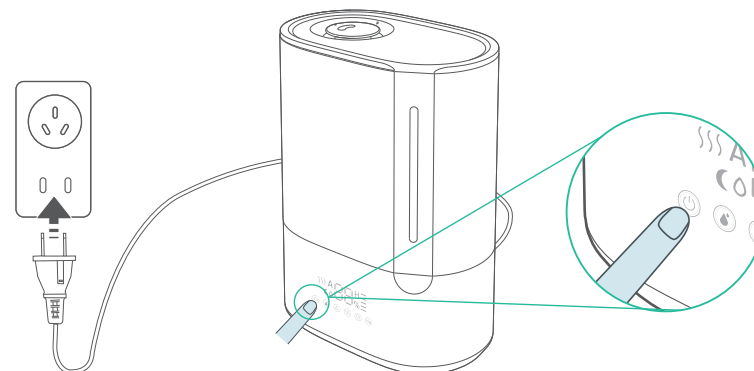


- 4 Optionally, push to pull out aroma box. Add several drops of pure essential to the aroma pad.



- 5 Plug in the humidifier. Tap Power Button to turn on. The humidifier will start misting.

Tap other buttons to customize your settings. Tap Power Button to turn off after using.



Care and Cleaning



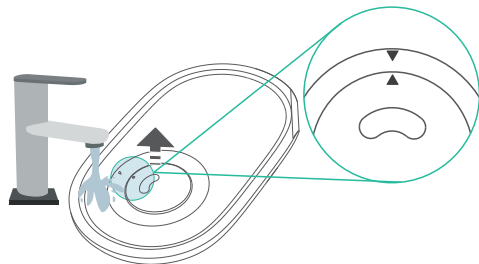
- Always make sure the humidifier is unplugged before cleaning.
- Never immerse the base in water or any liquid. Do not place any part in a dishwasher nor clean with detergents.
- If not using the humidifier for a long period of time, do not leave water inside. Clean and dry the humidifier.

General Cleaning

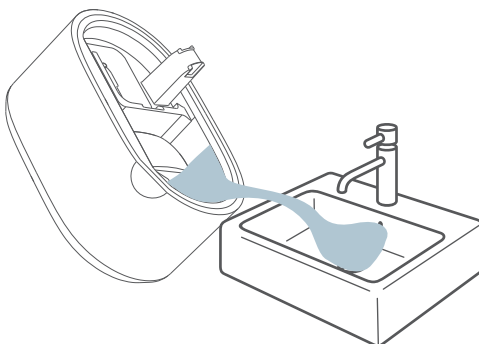


To avoid bacteria growth, clean the water tank and reservoir at least once every week.

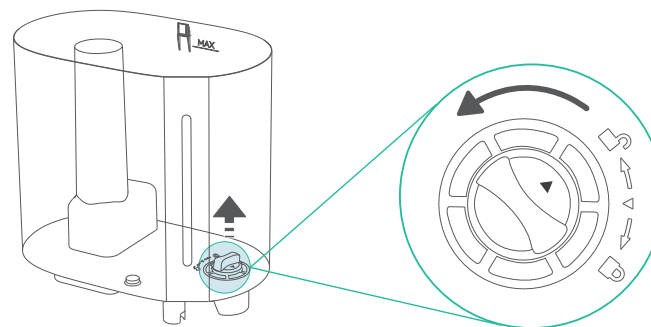
- 1 Unplug the humidifier. Remove the nozzle (by aligning ▲ with ▼) and tank cover. Rinse both with water.



- 2 Remove the water tank from the base. Pour out any water from the reservoir. **Do not allow liquid to enter the air outlet.**

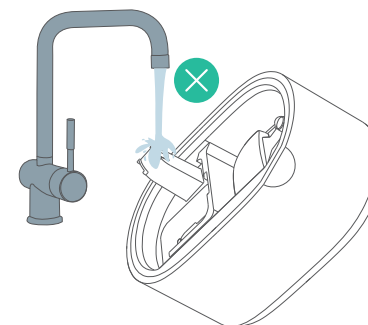
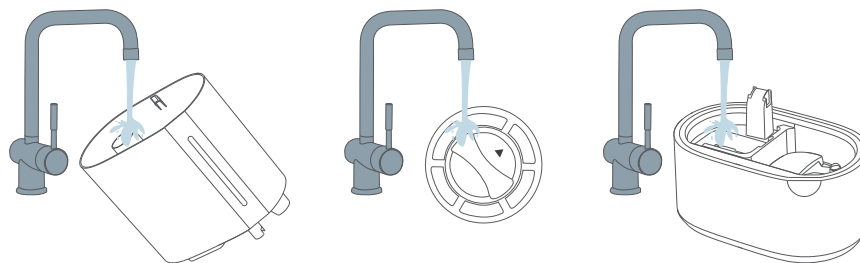


- 3 Remove the water filter from the tank by rotating it counterclockwise and lifting it out.



- 4 Rinse the tank, water filter and reservoir with room temperature water. Clean with the brush if necessary.

Do not allow liquid to enter the air outlet.

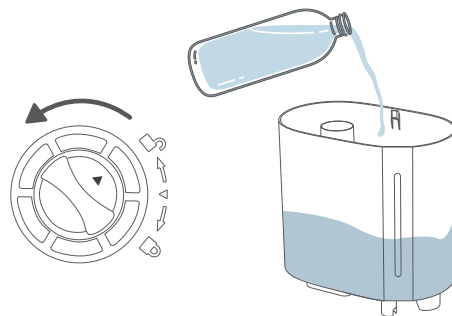


Deep Cleaning (Descaling)

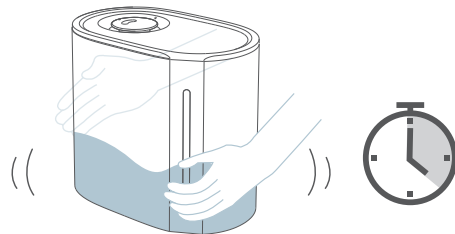


It is recommended to deep clean every 2 weeks or if there is any mold buildup inside the water tank or reservoir, or before and after storing for a long period of time.

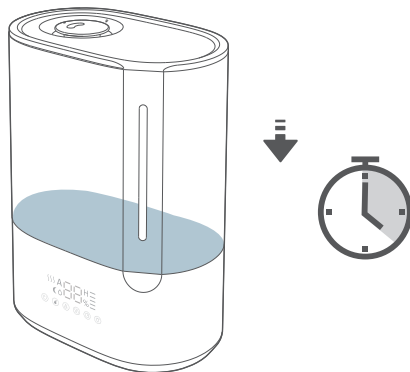
- 1 Remove the water filter from the tank. Fill the tank with 3 cups of distilled white vinegar with 3 cups of room temperature water.



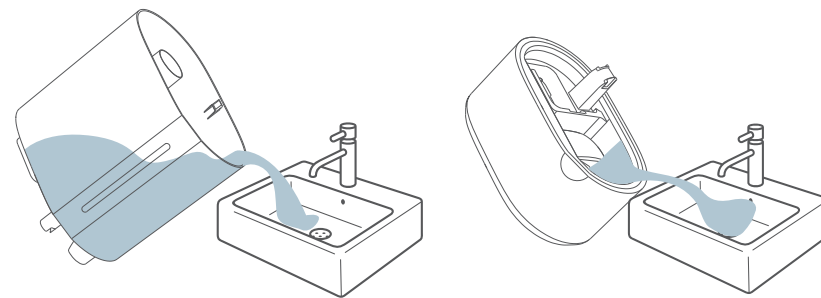
- 2 Place the tank cover back and gently shake to coat all sides of the tank. Allow it to sit for 15 to 20 minutes.



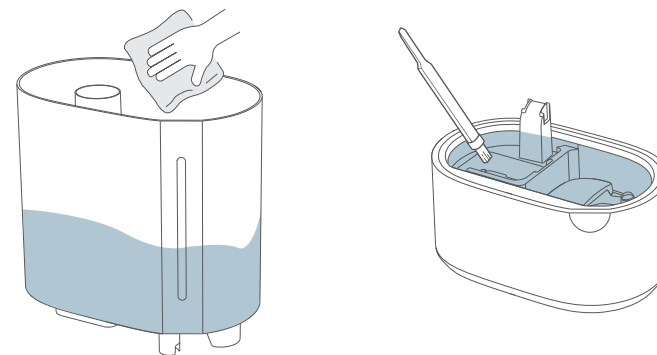
- 3 Place the tank on the base, vinegar mixture will drain into the reservoir. Soak for another 15 to 20 minutes.



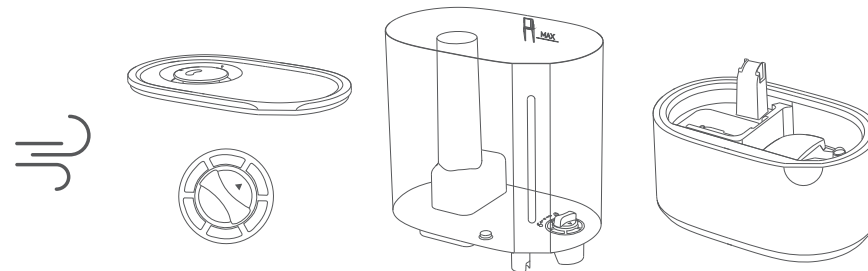
- 4 Remove the tank from the base, and pour out any vinegar mixture from the reservoir and tank.




- 5 Use a soft cloth and the cleaning brush to remove scale from all parts. Rinse with room temperature water.



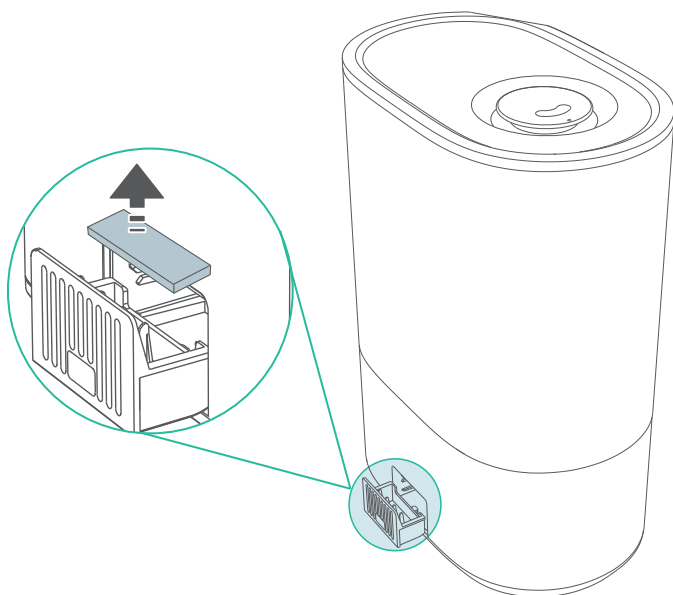
- 6 Dry all parts. Make sure all parts are completely dry before reassembling or storing.



Cleaning Aroma Box

 Do not use liquid cleaners or detergents to clean the pads.

- 1 Push to pull out the aroma box. Remove the aroma pad and dustproof sponge.
- 2 Rinse under warm, running water. Air dry completely then place back to the aroma box.
- 3 Replace the aroma pad or dustproof sponge if it is stiff or dirty even after cleaning. Extra pad and sponge are included with the humidifier. For more replacement accessories, contact us at support@vagkrihome.com



Troubleshooting

The troubleshooting guide addresses the most common problems. If problems persist, feel free to contact the Customer Support at support@vagkrihome.com

The humidifier does not turn on or turns off suddenly.

- Make sure the humidifier is connected to a working outlet.
- Make sure the water tank is properly placed on the base with enough water.
- Check if AUTO Mode is turned on, the humidifier will automatically stop working once the relative humidity is over 65%.
- The humidifier will automatically stop working once the set humidity level is reached.
- Check if you have set Auto-off Timer, the humidifier will automatically power off once the time is finished.

Little or no mist comes out.

- Make sure the water tank is filled with enough water.
- Make sure the nozzle and the water filter are not blocked or clogged, clean the humidifier regularly (see Care and Cleaning).
- Make sure the air inlet on the aroma box is not blocked. Avoid placing the humidifier on carpet or other surfaces that may block the air inlet.
- Mineral build-up on the ultrasonic transducer, clean and descale the humidifier regularly.

Water visibly leaks from the humidifier.

- Make sure to place the humidifier on a flat, level surface.
- Avoid adding water above MAX water line.
- Check the water tank for leaks. If there are leaks, contact our Customer Support for help.
- Do not add water through mist tube nor add directly into water reservoir.

The humidifier makes a loud or unusual noise.

- Mineral build-up on the ultrasonic transducer, clean and descale the humidifier regularly.
- The internal fan has started to wear out for a couple of years of use or using in a dusty environment, contact our Customer Support for help.

Warranty and Service

Thank you for choosing VAGKRI Warm & Cool Mist Humidifier. This product is covered with VAGKRI product and labor warranty for 12 months from the date of its original purchase.

The warranty will not apply in cases of:

- Accident, misuse, or repairs performed by unauthorized personnel.
- Any unit that has been tampered with or used for commercial purpose.
- Normal wear and tear of wearable parts.
- Use of force, damage caused by external influences.
- Damage caused by non-observance of the User Manual, e.g. connection to an unsuitable mains supply or non-compliance with the instructions.
- Partially or completely dismantled appliances.
- Defects caused by or resulting from damages from shipping or from repairs, service, or alteration to the product or any of its parts that have been performed by a repair person not authorized.

We can only provide after sales service for products that are sold by VAGKRI or VAGKRI authorized retailers and distributors. If you have purchased your unit from a different place, please contact your seller for return and warranty issues.

Please have your invoice and order ID ready before contacting Customer Support at support@vagkrihome.com

FCC Compliance

This device complies with Part 18 of the FCC Rules. Operation is subject to the following two conditions: (1) this device may not cause harmful interference, and (2) this device must accept any interference received, including interference that may cause undesired operation.