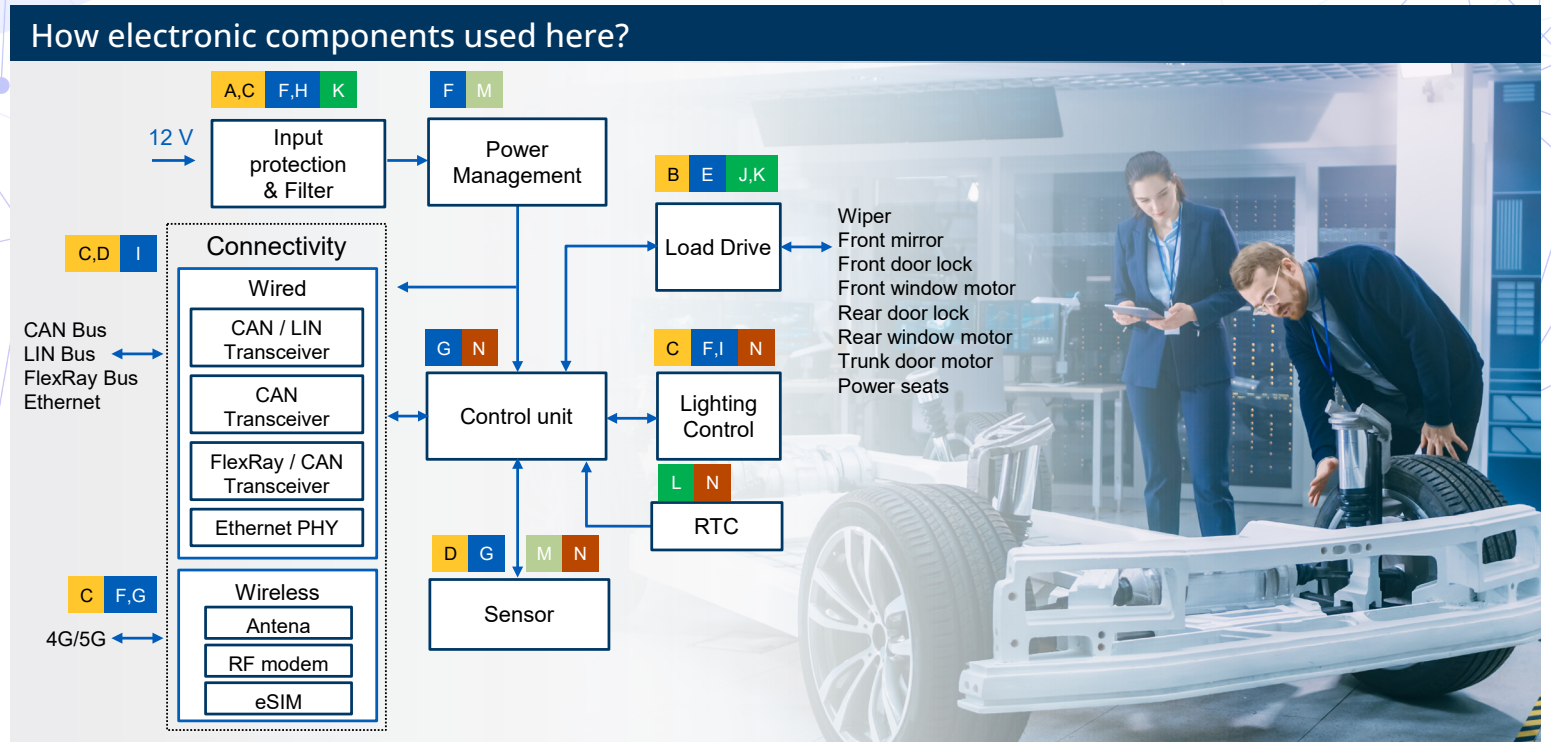


Body control module (BCM)

Body control module (BCM) is a central electronic unit that manages various non - critical vehicle functions such as lighting, door locks, seats and windows control. Electronic components ensure stable power delivery, filter electrical noise, and manage voltage levels, thereby enhancing the reliability and functionality of the BCM.



	Product	Families	Function
Circuit Protection	A fuse	CC06FA, AMX / AMXL	OC protection
	B PTC resettable fuse	PTSA	OC protection
	C Multilayer varistor ESD protection, High power TVS diode, Polymer ESD suppressor	AMLV, SM8T, 0402ESDA-AEC1	OV protection
	D Multilayer varistor ESD protection	AMLV	OV protection
Magnetics	E Molded power inductor	HCM1A	Noise filtering
	F Molded power inductor, Semi-shielded inductor, Shielded inductor	HCM1A, MPIA, EXLA, SDCxA, DRA	DC-DC
	G Ferrite chip bead, Multilayer chip inductor	MFBA, MCLA	Signal line noise reduction
	H Automotive common mode choke	CMLA	Common mode filter, power line
Sensors Capacitors	I CAN-Ethernet inductor	ACE	Common mode filter, signal line
	J Cylindrical supercapacitor	TVA	Backup power
	K Hybrid polymer capacitor	EHBSA	Input / output capacitor
	L Coin cell supercapacitor	KR, KW	RTC backup
Timing Devices	M Current sense resistor	CSSA / CSKA, MSMA, MFSA	Current sensing
	N MHz quartz crystal resonator	E3XA / E9XA	Clock reference

Recommended products



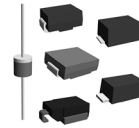
0603FA Fast-acting SMD fuse

- 1.6 mm x 0.8 mm surface mount
- Up to 50 Vdc voltage
- Interrupting rating: 35 A / 50 A
- Current range: 0.25 A - 5 A
- AEC-Q200 qualified



AMLV Multilayer varistor ESD protection

- Up to 1200 A peak current
- Up to 56 V working voltage
- AEC-Q200 qualified



SM8T High power TVS diode automotive rated

- 8000 W peak pulse capability
- Uni and Bi-polar
- Low profile DO-218AB package
- AEC-Q101 qualified



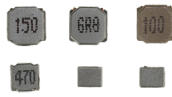
0402ESDA-AEC1 Polymer ESD suppressor

- 0402 (1005 metric) package
- Ultra-low capacitance (0.05 pF)
- Single-line, bi-directional device
- Very fast response time
- AEC-Q200 qualified



HCM1A High current molded inductor

- Popular SMT sizes: 5 mm, 7 mm, 10 mm, 13 mm, 17 mm
- Inductance range: 0.10 μ H to 100 μ H, rated up to 100 A, low DCR
- AEC-Q200, -55 °C to +155 °C



SDCxA Semi-shielded inductor

- 4 mm, 5 mm, 6 mm, 8 mm SMT sizes
- Inductance range: 1.0 μ H to 100 μ H, current range up to 13.5 A, low DCR
- AEC-Q200, -55 °C to +125 °C



DRA Shielded inductor

- 12.5 mm (4.5, 6, and 8 mm height) mm and 7.6 mm (3.55 and 4.35 mm height) SMT packaging
- Inductance range: 0.28 μ H to 1000 μ H, rated up to 56 A
- AEC-Q200, +165 °C maximum operating temperature



MPIA Low profile molded inductor

- EIA / Metric sizes: (0806/2016), (1008/2520), and 4² mm
- Inductance range: 0.10 μ H to 22 μ H, rated up to 22 A, low DCR
- AEC-Q200, -55 °C to +125 °C



MFBA Ferrite chip bead

- EIA / Metric sizes: (0402/1005), (0603/1608), (0805/2012), (1206/3126)
- High impedance up to 2000 Ω , high current up to 6 A
- AEC-Q200, -55 °C to +150 °C (High temperature rating)



MCLA Multilayer chip inductor

- Standard EIA 0402 to 3216 size
- High Q, higher current ratings
- Inductance range: 1.0 nH to 12 μ H
- AECQ Grade 3 qualified



CMLA Automotive common mode choke

- Three most popular SMT sizes: 7 mm, 9 mm, 12 mm
- 700 Ω impedance, rated up to 8 A
- AEC-Q200, -40 °C to +125 °C



ACE CAN-Ethernet inductor

- EIA/Metric sizes: (0805/2012), (1210/3225), (1812/4532)
- Inductance range: 11 μ H to 200 μ H
- AEC-Q200 qualified, OPEN Alliance 2.0 (ACE2V), -40 °C to +125 °C



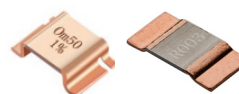
Conductive polymer hybrid aluminum electrolytic capacitor

- Capacitance range: 10 μ F - 820 μ F
- Voltage range: 16 Vdc - 80 Vdc
- High reliability, high endurance, high ripple current, low ESR and long life
- Temperature range: -55 °C to +125 °C
- AEC-Q200 option available



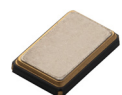
KR / KW Coin cell supercapacitor

- 11 - 21 mm diameter, height down to 6.5 mm
- Operating voltage up to 5.5 V, 0.1 F - 1.5 F capacity
- KR: -25 °C to 85 °C; KW: -40 °C to 85 °C



CSSA / CSKA Current sense resistor

- 1216 (3138 metric) to 5930 (15076 metric) package
- Resistance value from 0.2 m Ω to 5 m Ω
- High power ratings, up to 15 W
- AEC-Q200 qualified



E3XA 3225 Quartz crystal resonator

- 1210 (3225 metric) package
- Frequency range 12 MHz to 48 MHz
- Operating temperature: -40 °C to +125 °C
- AEC-Q200 qualified

Eaton
Electronics Division
1000 Eaton Boulevard
Cleveland, OH 44122
United States
Eaton.com/electronics

© 2025 Eaton
All Rights Reserved
Printed in USA
Publish date: August 2025

Eaton is a registered trademark.

All other trademarks are property of their respective owners.



www.eaton.com/electronics



Powering Business Worldwide