

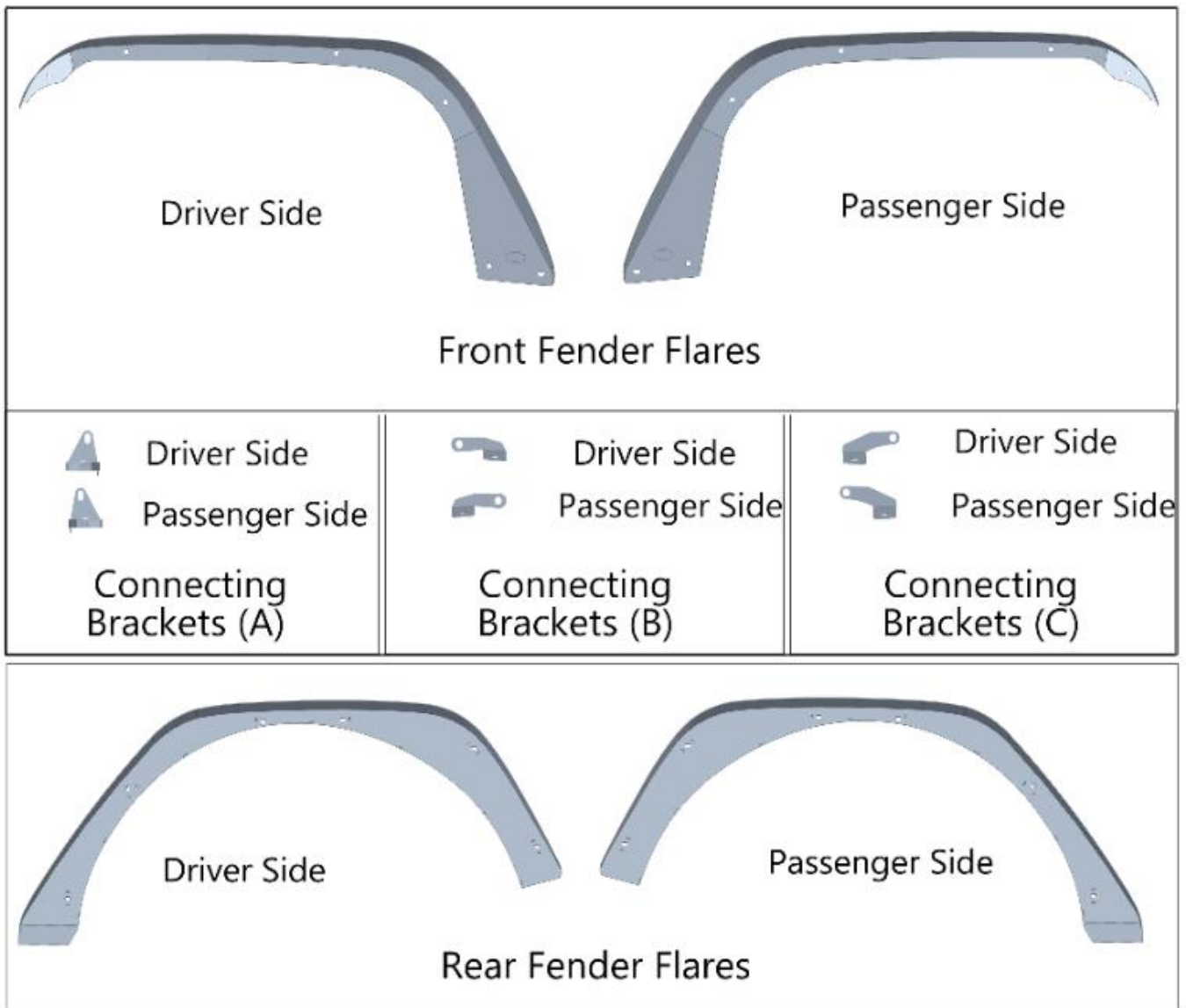


MAKE A DIFFERENCE

Fender Flares

BXG.3049

(1) Contents:



Front			
Qty	Part Name	Size(mm)	Picture
6	Button Head Socket Cap Bolts Screws	M8*20	
12	Button Head Socket Cap Bolts Screws	M6*20	
12	Split Lock Washer	D6	
6	Flat Washer	M8*16*1	
12	Flat Washer	M6*16*1	
10	Flange Hex Lock Nuts	M6	
6	Flange Hex Lock Nuts	M8	
2	Rivet Nut	M6	
Rear			
12	Button Head Socket Cap Bolts Screws	M6*35	
12	Split Lock Washer	D6	
12	Flat Washer	M6*16*1	
4	Flange Hex Lock Nuts	M6	
8	Rivet Nut	M6	

(2) Tools required:

- a. Drive Socket Ratchet Wrench;
- b. 4mm & 5mm Hex Bit Socket;
- c. Rivet Nut Tool;
- d. 10mm & 13mm Wrench;

Hand Rivet Nut Tool
(Package Included)



(3) Installation time:

About 1.5 hours, 2-3 people may be needed. Installation time may differ according to your mechanical skill level.

(PLEASE VERIFY ALL PARTS ARE PRESENT AND READ INSTRUCTIONS CAREFULLY BEFORE STARTING INSTALLATION!)

To view the electronic version (BXG.3049), please scan the QR code.



(4) Installation instruction:

Driver Side Front Fender Flare Installation:

Step 1: Remove the factory front fender flare. Ready to install our product.



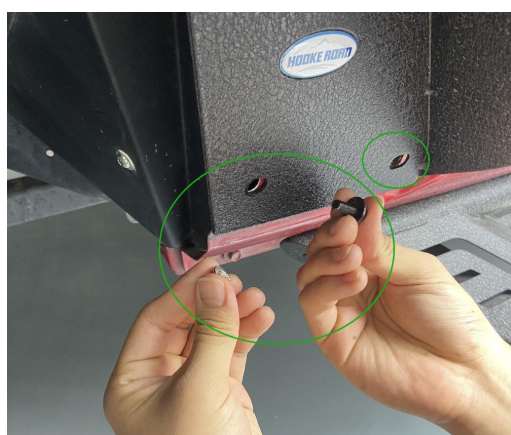
Step 2: Install the rivet nut in the most right hole with the rivet nut tool.

the rivet nut tool instruction: The 4mm Hex Bit Socket use in the top, 10mm wrench stuck on the middle nut. Put the rivet nut in the hole, screw the threaded end of the rivet nut tool into the rivet nut (**Notice: Must be screwed to the bottom**), finally unscrew the rivet nut tool out.



Notes: The image on the upper right only shows how the rivet nut tool is used.

Step 3: Next, Lift up the front fender flare and install the right three holes. Use the Button Head Socket Cap Bolts Screws (M8*20), Flat Washer (M8*16*1), Flange Hex Lock Nuts (M8). **Don't tighten up those bolts.**



Step 4: Next, Install the connecting brackets (A&B&C) in order (**Attention to distinguish the driver side and passenger side**). Use the Button Head Socket Cap Bolts Screws (M6*20), Flat Washer (M6*16*1), Flange Hex Lock Nuts (M6). **Tighten up this step and the step 3 bolts.**



Driver Side



Passenger Side

Front Connecting
Brackets (A)



Driver Side



Passenger Side

Front Connecting
Brackets (B)

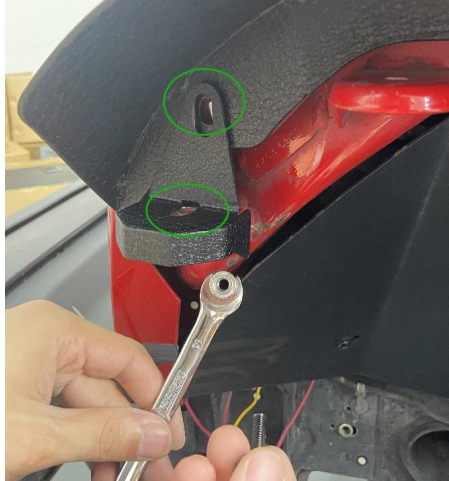
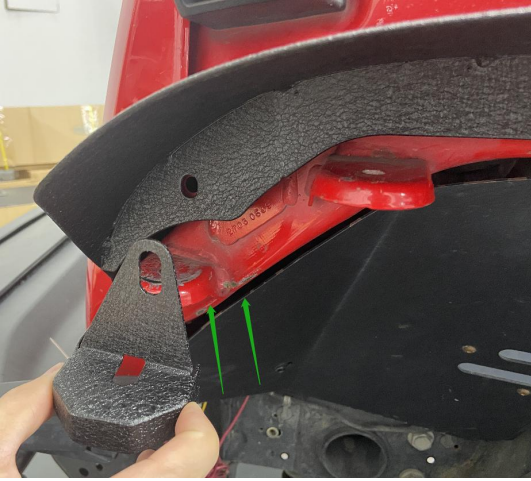


Driver Side



Passenger Side

Front Connecting
Brackets (C)



Driver Side Rear Fender Flare Installation:

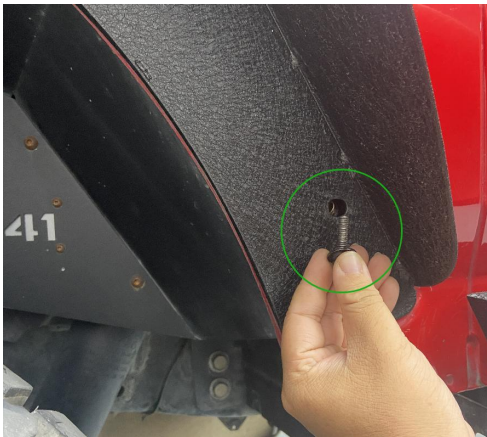
Step 5: Remove the factory rear fender flare. Ready to install our product.



Step 6: Install the rivet nut into the four holes with the rivet nut tool.



Step 7: Install the rear fender flare. Use the Button Head Socket Cap Bolts Screws (M6*35), Split Lock Washer (D6), Flat Washer (M6*16*1). **Only the upper installation holes need use the Flange Hex Lock Nuts(M6).** Tighten up those bolts.



Step 8: Repeat the same installation steps in the passenger side.

Step 9:

The installation is complete. We hope you enjoy a wonderful off-road life with this quality Hooke Road product!



Attention:

1.The product parts in this instruction may differ slightly from the actual product contents but generally does not affect the installation of the product.

2.Please feel free to contact your distributor if you have any kind of question about your purchase.

Google Hooke Road to find your parts.

Feel Free To Share Your Vehicle [@HookeRoad4x4](#)
With The Hashtag #hookeroad If You'd Like

