



Build-a-Waffle Learning Set™



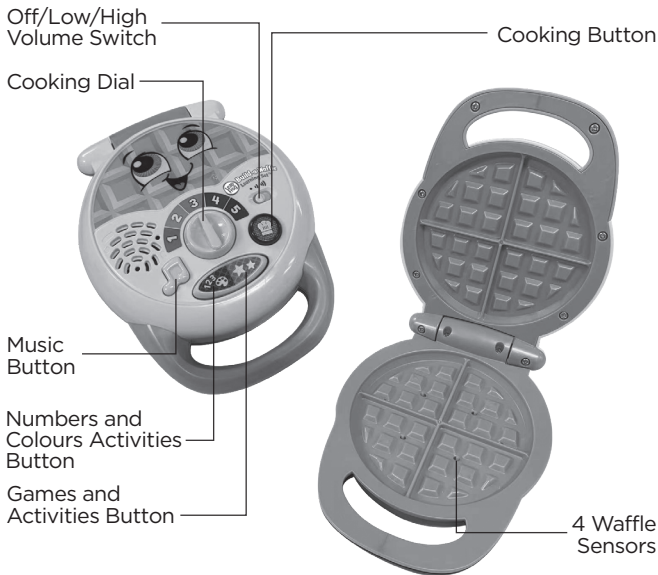
Instruction Manual

This manual contains important information. Please keep it for future reference.

INTRODUCTION

Thank you for purchasing the **Build-a-Waffle Learning Set™**. Encourage learning and pretend play with 13 play pieces and an interactive waffle set that introduces numbers, counting and colours.

Guided activities build early language and listening skills. Create a delicious waffle breakfast with toppings. Serve it up on the plate, pick up the fork and knife, and dig in!

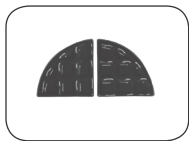


INCLUDED IN THE PACKAGE

Build-a-Waffle Learning Set™



1 waffle maker



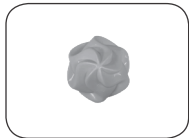
2 double-sided
brown/tan waffle
pieces



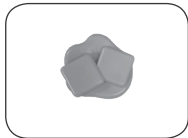
2 double-sided
pink/tan waffle
pieces



1 syrup bottle



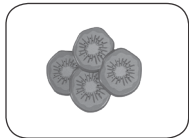
1 whipped cream
topping



1 butter
topping



1 strawberry
topping



1 kiwi
topping



1 blueberry
topping



1 fork



1 knife



1 plate

- Quick Start Guide

WARNING

All packing materials such as tape, plastic sheets, packaging locks, removable tags, cable ties, cords and packaging screws are not part of this toy and should be discarded for your child's safety.

NOTE

Please save this Instruction Manual as it contains important information.

NOTE

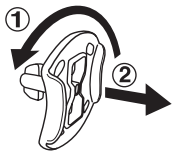
Do not place any object into the waffle maker other than the waffle pieces provided with the **Build-a-Waffle Learning Set™**.

NOTE

If the unit powers down or if the light fades out during play, please install a new set of batteries.

Unlock the Packaging Locks

- ① Rotate the packaging locks 90 degrees anticlockwise.
- ② Pull out the packaging locks and discard.



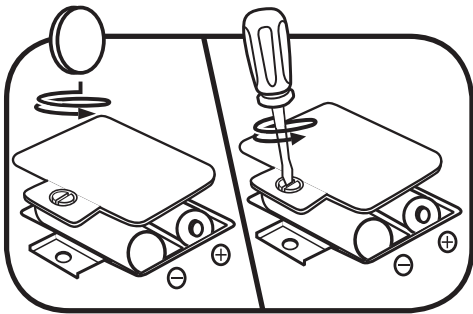
GETTING STARTED

BATTERY REMOVAL AND INSTALLATION

1. Make sure the unit is turned **OFF**.
2. Locate the battery cover on the back of the unit. Use a screwdriver to loosen the screw and then open the battery cover.
3. If used batteries are present, remove these batteries from the unit by pulling up on one end of each battery.
4. Install 2 new AAA (AM-4/LR03) batteries following the diagram inside the battery box. (For best performance, alkaline batteries or fully charged Ni-MH rechargeable batteries are recommended).
5. Replace the battery cover and tighten the screw to secure.

WARNING:

Adult assembly required for battery installation.
Keep batteries out of reach of children.



IMPORTANT: BATTERY INFORMATION

- Insert batteries with the correct polarity (+ and -).
- Do not mix old and new batteries.
- Do not mix alkaline, standard (carbon-zinc) or rechargeable batteries.
- Only batteries of the same or equivalent type as recommended are to be used.
- Do not short-circuit the supply terminals.
- Remove batteries during long periods of non-use.
- Remove exhausted batteries from the toy.
- Dispose of batteries safely. Do not dispose of batteries in fire.

RECHARGEABLE BATTERIES:

- Remove rechargeable batteries from the toy before charging.
- Rechargeable batteries are only to be charged under adult supervision.
- Do not charge non-rechargeable batteries.

Disposal of batteries and product



The crossed-out wheeled bin symbols on products and batteries, or on their respective packaging, indicates they must not be disposed of in domestic waste as they contain substances that can be damaging to the environment and human health.



The chemical symbols Hg, Cd or Pb, where marked, indicate that the battery contains more than the specified value of mercury (Hg), cadmium (Cd) or lead (Pb) set out in the Batteries and Accumulators Regulation.

The solid bar indicates that the product was placed on the market after 13th August, 2005.

Help protect the environment by disposing of your product or batteries responsibly.

LeapFrog® cares for the planet.

Care for the environment and give your toy a second life by disposing of it at a small electricals collection point so all its materials can be recycled.

In the UK:

Visit www.recyclenow.com to see a list of collection points near you.

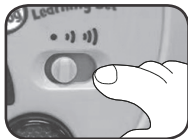
In Australia & New Zealand:

Check with your local council for kerbside collections.

PRODUCT FEATURES

1. Off/Low/High Volume Switch

To turn the unit **On**, slide the **Off/Low/High Volume Switch** to the Low » or High » position. To turn the unit **Off**, slide the **Off/Low/High Volume Switch** to the Off ● position.



2. Cooking Dial

Turn the **Cooking Dial** to select a cooking time with the number 1 as the shortest time and the number 5 as the longest. When prompted, turn the **Cooking Dial** to one of the five colours to choose a waffle texture from ooey-gooey to crispy-crunchy.



3. Light Up Cooking Button

After setting the **Cooking Dial**, press the **Cooking Button** to start cooking the waffles. The button will light up and flash when the waffles are ready.



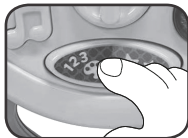
4. Music Button

Press to hear four songs about cooking waffles and adding toppings, numbers one to five and colours.



5. Numbers and Colours Activities Button

Press the **Numbers and Colours Activities Button** for a guided play activity about numbers or colours. Follow the prompts to turn the **Cooking Dial**, count along as you add each waffle piece to the waffle maker (which activates the **Waffle Sensor**) and serve up waffles with added toppings.



6. Games and Activities Button

Press the **Games and Activities Button** for activities which encourage creative play in building your own waffle recipes. Occasionally, timed stacking challenges will play.



7. Automatic Shut-Off

To preserve battery life, the **Build-a-Waffle Learning Set™** will automatically shut off after approximately 65 seconds without input. The unit can be turned on again by pressing any button, opening or closing the lid, or turning the dial.

SONG LYRICS

Song 1

Waffles and toppings,
So many delicious ways to eat.
When you're building a waffle treat!

Song 2

1, 2, 3, 4, 5,
Making waffles is so much fun.
They're gonna be so yummy.
Hooray, hooray, the waffles are done!

Song 3

Purple, blue, red, orange, green,
Making waffles is so much fun.
They're gonna be so yummy.
Hooray, hooray, the waffles are done!

Song 4

We're cooking waffles,
They'll be great.
Everything tastes so much better,
When we share our waffles together.

CARE & MAINTENANCE

1. Keep the unit clean by wiping it with a slightly damp cloth.
2. Keep the unit out of direct sunlight and away from any direct heat sources.
3. Remove the batteries if the unit will not be in use for an extended period of time.
4. Do not drop the unit on hard surfaces and do not expose the unit to moisture or water.

TROUBLESHOOTING

If for some reason the unit stops working or malfunctions, please follow these steps:

1. Turn the unit **Off**.
2. Interrupt the power supply by removing the batteries.
3. Let the unit stand for a few minutes, then replace the batteries.
4. Turn the unit **On**. The unit should now be ready to use again.
5. If the unit still does not work, install a new set of batteries.

Environmental Phenomena

The unit may malfunction if subjected to radio-frequency interference. It should revert to normal operation when the interference stops. If not, it may become necessary to turn the power **off** and back **on**, or remove and reinstall the batteries. In the unlikely event of an electrostatic discharge, the unit may malfunction and lose memory, requiring the user to reset the device by removing and reinstalling the batteries.

CONSUMER SERVICES

Creating and developing **LeapFrog®** products is accompanied by a responsibility that we at **LeapFrog®** take very seriously. We make every effort to ensure the accuracy of the information, which forms the value of our products. However, errors sometimes can occur. It is important for you to know that we stand behind our products and encourage you to call our Consumer Services Department with any problems and/or suggestions that you might have. A service representative will be happy to help you.

UK Customers:

Phone: 01702 200244 (from UK) or +44 1702 200244 (outside UK)

Website: www.leapfrog.co.uk/support

Australian Customers:

Phone: 1800 862 155

Website: support.leapfrog.com.au

NZ Customers:

Phone: 0800 400 785

Website: support.leapfrog.com.au

PRODUCT WARRANTY/ CONSUMER GUARANTEES

UK Customers:

Read our complete warranty policy online at leapfrog.com/warranty.

Australian Customers:

VTECH ELECTRONICS (AUSTRALIA) PTY LIMITED -
CONSUMER GUARANTEES

Under the Australian Consumer Law, a number of consumer guarantees apply to goods and services supplied by VTech Electronics (Australia) Pty Limited. Please refer to leapfrog.com/en-au/legal/warranty for further information.



***Visit our website for more
information about our products,
downloads, resources and more.***

leapfrog.com

LeapFrog Enterprises, Inc.,
A subsidiary of VTech Holdings Limited.
TM & © 2022 LeapFrog Enterprises, Inc.
All rights reserved.

Printed in China
IM-616700-000
Version:0