

Ductless Heat Pump Systems

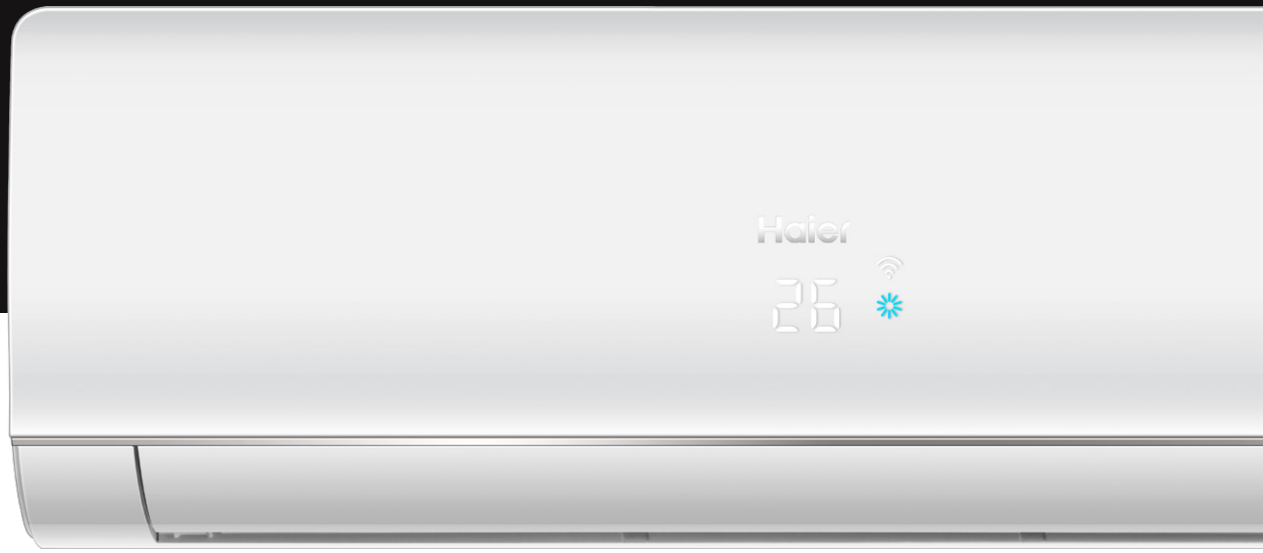


GE APPLIANCES
a Haier company

AIR&WATER
SOLUTIONS

**Easy to Install.
Easy to Service.
Easy to Own.**





Ductless Mini-Splits from the **#1** Major appliance brand in the world.*

Haier ductless mini split systems offer a completely comfortable heating and cooling experience. Easy to install, own and love, our flexible systems are energy efficient and maintain consistent room temperatures. You also have the peace of mind from knowing that all this comfort is backed by a 10-year limited warranty - and by the experts at GE Appliances Air & Water Solutions.

*Euromonitor 2024. Major appliance category does not include ductless mini-splits.

A Full Lineup of Ductless Solutions

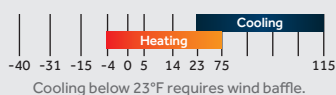
Single Zone



Tempo
SERIES

- Up to 23 SEER2; 9.5 HSPF2
- 09/12K 115V options with basepan heater
- 09/12/18/24K 230V options with highwall matches

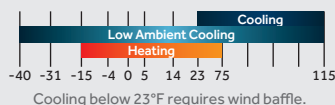
OPERATING RANGE (°F):



FlexFit
SERIES

- Up to 23 SEER2; 9.5 HSPF2
- Low ambient heating down to -15°F (built-in basepan heater)
- -40°F low ambient cooling with wind baffle & top cover (sold separately)

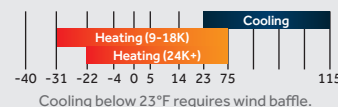
OPERATING RANGE (°F):



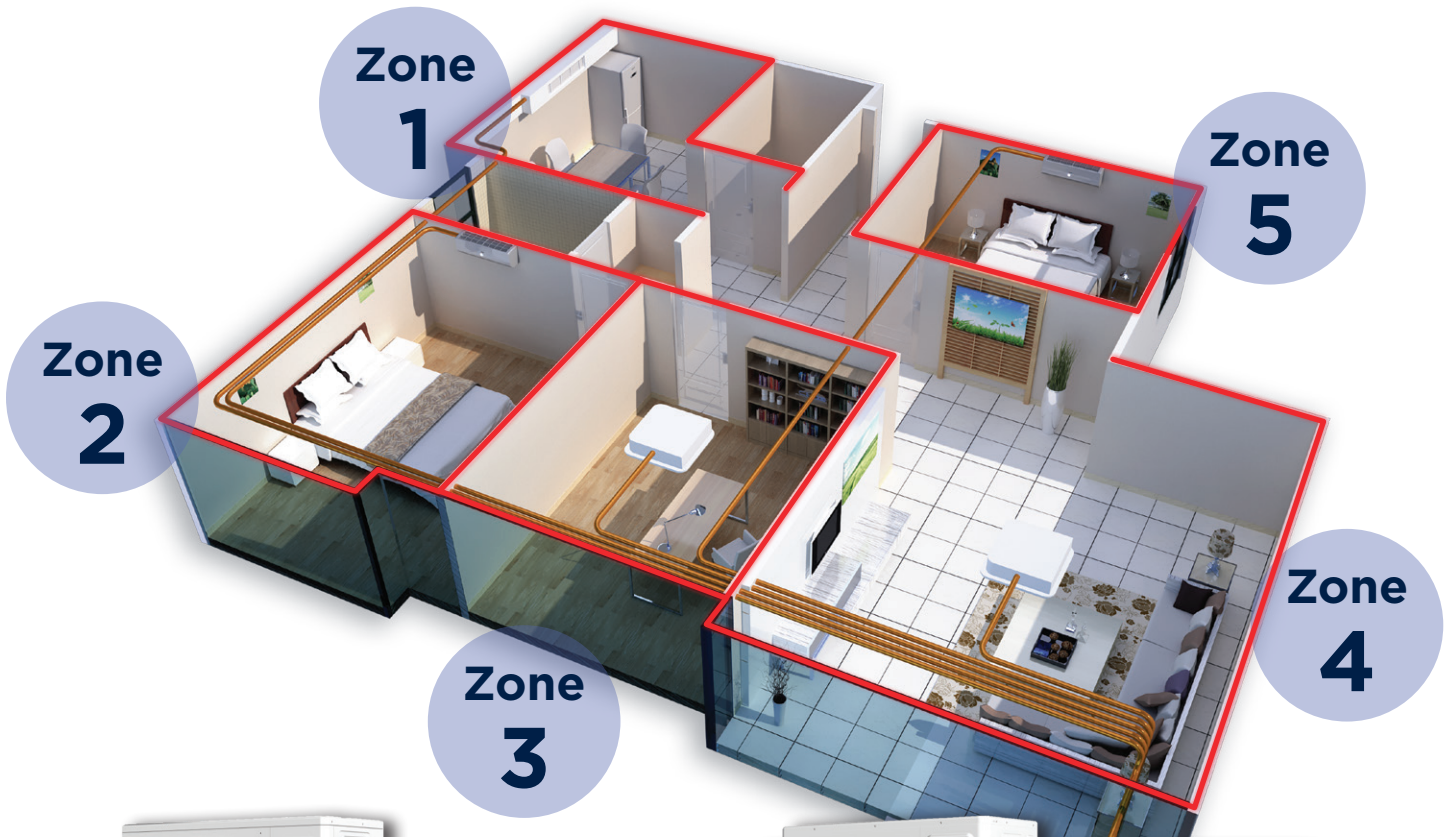
Arctic
SERIES

- Up to 27 SEER2; 11 HSPF2
- Cold climate compressor with basepan heater allows low ambient heating at -31°F
- Warm air in extreme conditions; up to 100% rated heating capacity at 5°F

OPERATING RANGE (°F):



Multi-Zone

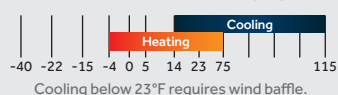


FlexFit
SERIES



- Up to 24 SEER2; 10.0 HSPF2
- Provides ~ 65% heating capacity at 5°F

OPERATING RANGE (°F):

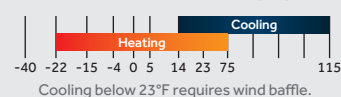


Arctic
SERIES



- Up to 23 SEER2; 10.5 HSPF2
- Built-in basepan heater allows operating down to -22°F
- Provides ~ 90% heating capacity at 5°F

OPERATING RANGE (°F):



= compatible with highwall, cassette, console & ducted indoor units (varies by model).

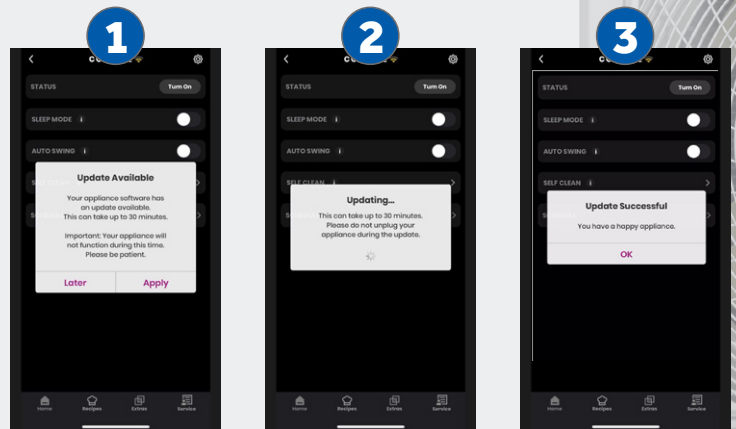
Easy to Service

Updates Made Easy

OVER-THE-AIR (OTA) UPDATES

- Allows the system to get smarter over time with remote feature/mode additions & improvements.
- Enables SmartHQ™ Service to read both the indoor & outdoor unit data when connected to either unit.

EASY AS...



Requires connection of H1/H2 wire during installation.

Control Made Simple



Communicate digitally for real-time diagnosis



Identify root cause of issues quickly and effectively



Extend the life of the system through proactive maintenance



Convenience

With SmartHQ™, we make your customer's lives easier by helping them stay in control no matter where they are - like allowing them to start their unit on the way home.

Voice Control

Simply connect one or more systems to WiFi for hands-free temperature control.



Download from the App Store or Google Play.



SmartHQ™ Service module must be purchased separately.



Easy to Own



Quiet Technology

State-of-the-art inverters use smaller engines and reduce noise from startup to shutdown.

Most units come with a quiet mode, reducing noise while maintaining optimal heating and cooling performance.



Higher SEER2, Lower Cost

With efficiency ratings up to 27 SEER2, homeowners can save more money on energy bills.

Product across all series may qualify for homeowner rebates & tax credits.



Ready for Extremes

Unyielding durability. Tested in extreme environments to perform in even the most intense climates.

With low ambient heating down to -31°F and cooling power up to 115°F, your homeowners will stay comfortable no matter the season.

Low ambient cooling down to -40°F, ideal for server room applications.



R454B Refrigerant

79% reduction in GWP compared to R410A with zero ozone depletion potential.

Cooling performance equivalent to, or even better than R410A, with large cooling capacity and high-efficiency.

Choosing a lower GWP refrigerant prepares our equipment for future regulations, minimizing changes to our current design and reducing major product modifications in the future.

Service and Support

Training

Our dedicated HVAC training team is here to provide a full curriculum to help you learn the ins and outs of our product. Through the GE Appliances Air & Water Solutions Learning Academy, you'll be able to learn about products across our portfolio and stay up to date on your HVAC knowledge.



Support

Our full team of HVAC experts support the product and pros like you in the field. From leaders who have real-world field experience to specially trained front-line call-takers, we've got a team of experts to provide exactly the level of support you deserve.

Warranty

Most service parts are available for next-day shipment or already available at your local distributor. And with our flexible warranty policy, many can be scrapped at the time of replacement without having to wait for credit.



GE APPLIANCES
a Haier company

AIR&WATER
SOLUTIONS