



**Affordable. Reliable. Home Improvement.**

## **FENCE POST DRIVER**

**MODEL: JH-60E**

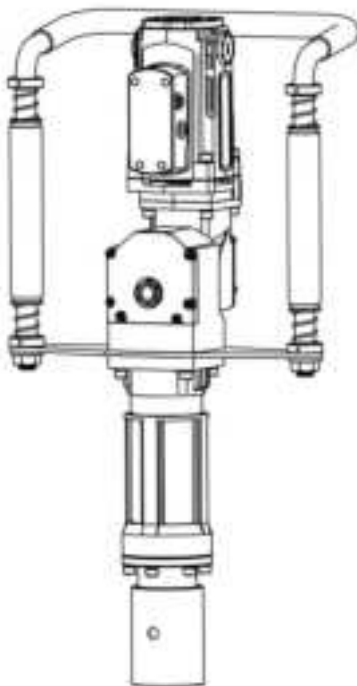


# VEVOR

Affordable. Reliable. Home Improvement.

## FENCE POST DRIVER

**MODEL: JH-60E**

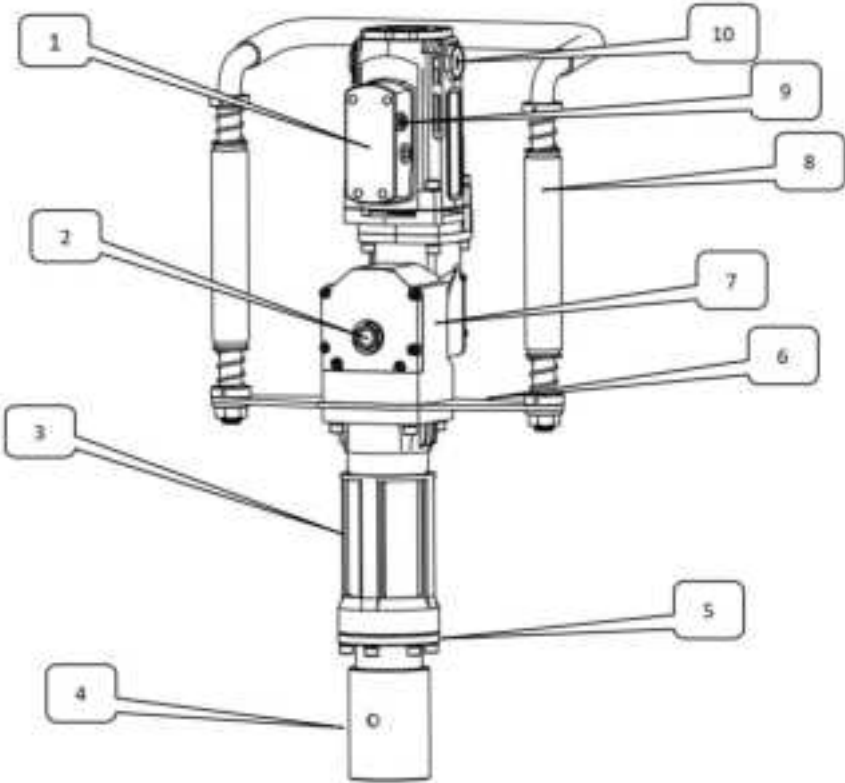


This is the original instruction, please read all manual instructions carefully before operating. VEVOR reserves a clear interpretation of our user manual. The appearance of the product shall be subject to the product you received. Please forgive us that we won't inform you again if there are any technology or software updates on our product.

For your safety, please read the manual carefully before using the machine, otherwise physical injury or mechanical damage may be caused.

# 1 .Name of Main Parts





NO.	NAME	NO.	NAME	NO.	NAME
1	Switch box	2	Grease port	3	Cylinder case
4	Pile sleeve	5	Iron head	6	Armrest fixing plate
7	Gear box	8	Handle	9	Overload protector
10	Brush holder cover				



Standard	American standard	Aus standard
Model	JH-60E	JH-60E
Power Source	AC120V 60Hz	AC230V 50Hz

Power	2200W
Impact Energy	85J

## Warnings and Safety Precautions

	Warning - To reduce the risk of injury, user must read instructions manual carefully.
	Warning- Be sure to wear eye protectors when using this product.
	Warning- Be sure to wear gloves when using this product.
	<p><b>CORRECT DISPOSAL</b></p> <p>This product is subject to the provision of european Directive 2012/19/EU. The symbol showing a wheelie bin crossed through indicates that the product requires separate refuse collection in the European Union. This applies to the product and all accessories marked with this symbol. Products marked as such may not be discarded with normal domestic waste, but must be taken to a collection point for recycling electrical and electronic devices.</p>

•**NOTE:** General information is given throughout the manual that may help the operator in the operation or service of the product.

## General safety rules

- 1.Warning! Read all warnings and instructions. Failure to follow the following warnings and instructions may result in unsafe accidents. For example, electric shock Fire, serious injury, etc.
- 2.Save all warnings and instructions for reference.
- 3.In all the following warnings, "electric tools" refer to wired electric or radio driven electric tools.

### **a) Workplace safety**

1) Keep the workplace clean and bright. Chaotic and dark venues can lead to safety accidents.

2) Do not work in explosive environments. If electric tools are operated in an environment with flammable liquids, gases, or dust, the sparks generated by the electric tools can ignite hazardous materials and cause fire accidents.

Keep children and bystanders away from power tools. Using electric tools without protective equipment and awareness can lead to safety accidents due to improper handling.

### **b) Electrical safety**

1) The power tool plug must match the power socket. Never modify the plug in any way. Do not use any conversion plugs for plugs that require grounding. The use of unmodified plugs and matching sockets will effectively reduce the risk of electric shock.

2) Avoid human contact with grounded surfaces. Such as metal pipes, heat sinks, and refrigerators. If your body is grounded to a surface, it will increase the risk of electric shock.

3) Do not expose electric tools to rain or damp environments. Electric tools that enter the water will increase the risk of electric shock.

4) Do not abuse wires. Never use wires to transport, drag or unplug power tools. Keep wires away from heat sources, sharp objects, and moving objects. Damaged or twisted flexible cords can increase the risk of electric shock.

5) When using electric tools outdoors, external flexible cords suitable for outdoor use should be used. External flexible cords suitable for outdoor use will reduce the risk of electric shock.

6) If working in a humid environment is inevitable, residual current operated protective devices (RCDs) should be used to reduce the risk of electric shock.

Note: The term "residual current operated protective device (RCD)" can be replaced by the terms "ground fault circuit breaker" (GFCI) or "ground leakage circuit breaker" (ELCB).

### **C) Life safety**

1) Stay alert. When operating electric tools, pay attention to the operation and remain alert. Do not operate electric tools when you feel tired, or when there are reactions to medication, alcohol, or treatment. Instant negligence when operating electric tools can lead to serious personal injury.

2) Use personal protective equipment. Always wear protective goggles. Safety devices: Devices such as using protective masks, anti slip safety shoes, safety helmets, and hearing protection under appropriate conditions can reduce personal injury.

3) Prevent accidental startup. Ensure that the start switch and power box switch are in the off position when picking up or handling power tools. Placing your finger on an already connected power switch or inserting the plug while the switch is on may cause danger.

4) Before connecting the power to the electric tool, remove all adjustment keys and wrenches. The keys and wrenches left on the rotating parts of electric tools can cause personal injury.

5) Always pay attention to your foothold and body balance. This way, electric tools can be well controlled in unexpected situations.

6) Dress appropriately. Do not wear loose fitting clothes or accessories. Keep clothing, hair, and gloves away from moving parts.

### **d) Usage and precautions for electric tools**

1) Do not abuse electric tools. Use appropriate electric tools according to the purpose. Choosing suitable electric tools will make your work more effective and safe.

2) If the switch cannot connect or disconnect the power supply, the electric tool cannot be used. It is dangerous not to use switches to control electric tools and must be repaired before use.

3) Before making any adjustments, replacing accessories, or storing electric tools, the power switch must be disconnected or the plug must be unplugged. This protective measure will reduce the risk of accidental tool start-up.

4) Store unused power tools outside the reach of children, and do not allow people who are not familiar with power tools or do not understand the

instructions to operate them. Power tools are dangerous in the hands of untrained users.

5) Maintain electric tools. Check if the moving parts are properly adjusted or stuck, check for component damage and other conditions that affect the operation of power tools. If there is any damage, repair it before use. Many accidents are caused by poorly maintained electric tools.

6) According to the user manual, consider the operating conditions and the operations carried out to use electric tools, accessories, and tool heads. Using electric tools for operations that are not compatible with their intended use may create hazards.

#### **e) Repair**

Send your electric tool to a dedicated maintenance personnel for repair and maintenance using original accessories, which will ensure the reliability and safety of the repaired electric tool.

## **operation**

### **Preparation before Use**

Before working , the pile sleeve should be inserted into the iron head, select a corresponding retainer according to the sizes of the piling of 55mm,70mm.



#### **WORKING:**

- Where many posts are to be driven, doing this in batches will save time. Lift the Post Driver over and on to the post. Ensure the post is in a vertical position and the Post Driver is on in a parallel plane to the post.
- Ensure the operator maintains a stable standing position with feet



shoulders width apart. Keep the body weight balanced.

5) Pull down on the Post Driver with 10-15kg of downward force.

### **Warning :**

If there are stones on the ground, please change the position and try again

### **On/Off switch**

Use the On/Off switch to start the machine and keep holding it for continuous operation.

To switch the machine off, release the On/Off switch

### **Overload protector**

When the electric current exceeds the rated value that the machine can withstand during operation, the overload protector will cut off the power supply , so the machine stops working to protect the motor

### **Replacing of carbon brushes**

The carbon brushes are expendable. It is keeping abrasion during use.

The carbon brushes should be changed regularly. In order not to damage the electrical circuit, both carbon brushes should be changed at the same time.

### **CAUTION!**

Exchanging the carbon brushes should be done by authorized service only.

The machine should be used only with both brushes!

## **Maintenance**

### **Unplug the appliance from main before maintenance.**

Keep the ventilation openings clear and clean the product regularly.

If something unusual occurs during use, switch off the supply and disconnect the plug. Inspect and repair the tool before using it again.

### **Repair of the tool must only be carried out by a qualified repair technician.**

Repair or maintenance by unqualified personnel can lead to a risk of injury.

### **Use only identical spare parts for repairing a tool**

### **Care and cleaning**

Clean the housing only with a damp cloth-do not uses any solvents! Dry

thoroughly afterwards.

## **Tool Lubrication**

### **CAUTION:**

**THE MACHINE IS SUPPLIED WITH GREASE IN GEAR BOX!**

The new machine have full grease in gear box, and no need to add more , the grease can be used 20-40 hours continuous running, but it should be checked daily.

When the user feels that the machine is not strong enough, it is necessary to add grease, each time you need to add 50-60g, can not add too much, and it is easy to cause the machine not to hammer.



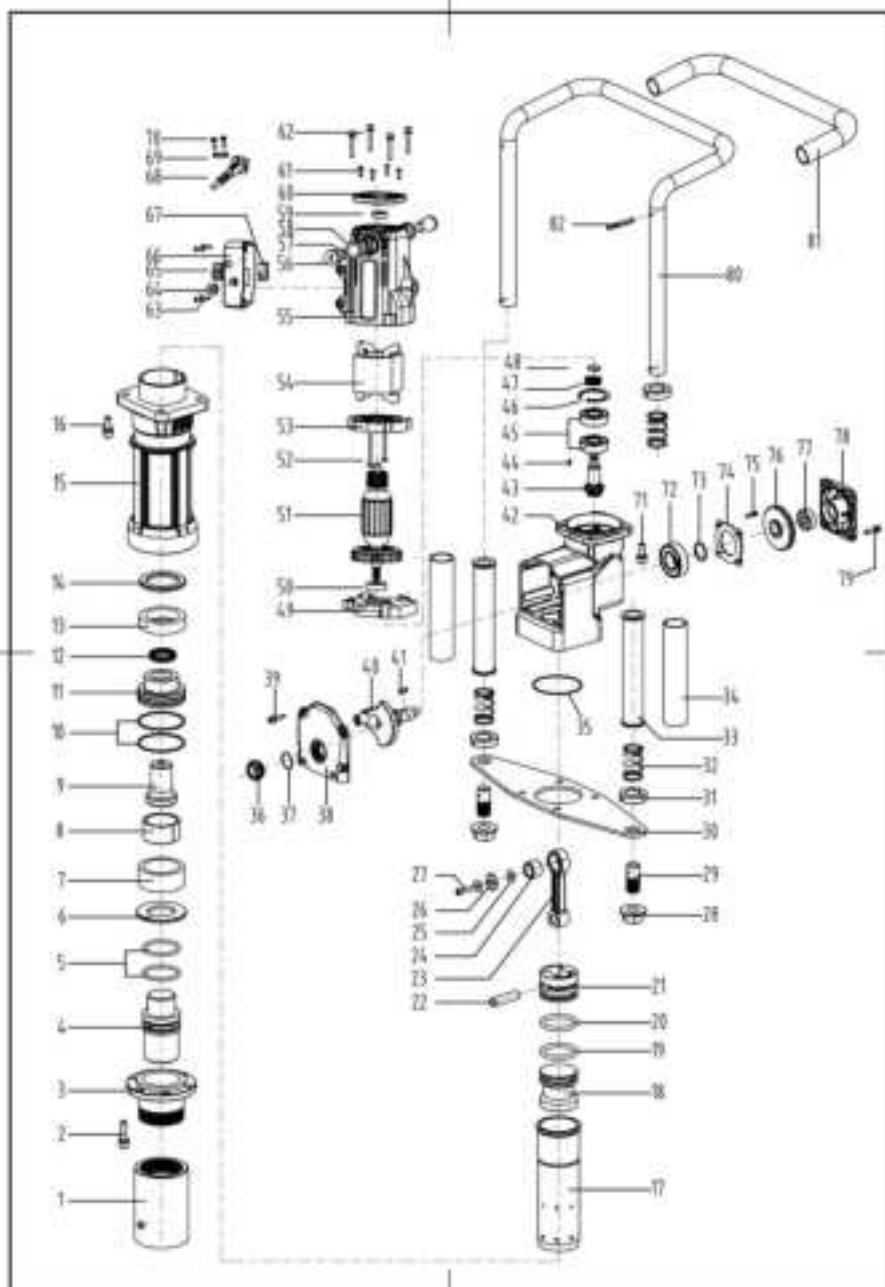
**DO NOT OVERFILL.** Always hold driver in upright position to check oil level. Proper oil level is essential for the correct operation of the post driver. Overfilling the oil will result in loss of power and could cause permanent damage to your machine.

## **Storage**

Store the machine, operating instructions and where necessary the accessories in the original packaging. In this way you will always have all the information and parts ready to hand.

Pack the device well or use the original packaging in order to avoid transit damage. Always keep the machine in dry place.

## **Explosion diagram and part list**



No.	Name	QTY	No.	Name	QTY
1	Front shroud	1	42	Gearbox casing	1
2	M8X35 SCREW	6	43	No.1 gear	1
3	Iron head	1	44	4X4X10 key	1
4	Hammer head	1	45	6203 bearing	2
5	O ring $\phi 46 \times \phi 3.6$	2	46	$\phi 40$ RTW	1
6	$\phi 71.8 \times \phi 40.5 \times 5$ gasket	1	47	Gear	1
7	Broken ring Cover	1	48	$\phi 12$ STW	1
8	Broken ring	1	49	Middle cover	1
9	Impactor	1	50	6202 bearing	1
10	Seal ring	2	51	Rotor	1
11	Bumper block	1	52	5X80 screw	2
12	Seal ring	1	53	air deflector	1
13	Large shock absorber ring	1	54	Stator	1
14	$\phi 66.5 \times \phi 48.2 \times 5$ gasket	1	55	Rotor holder	1
15	Cylinder case	1	56	Carbon brush cover	2
16	M8X45 SCREW	4	57	Carbon brush	2
17	cylinder	1	58	Carbon brush holder	2
18	Hammer	1	59	6000 bearing	1

19	φ44Xφ5.1 hammer seal ring	1	60	Aluminum rear cover	1
20	φ44Xφ5.3 piston seal ring	1	61	4X16screw	4
21	piston	1	62	M6X35screw	4
22	φ12X47 piston pin	1	63	4X16 screw	4
23	Connect ring	1	64	Protective sleeve	1
24	NK16/17 bearing	1	65	Overload protector (combination)	1
25	φ8 gasket	2	66	Switch box	1
26	Eccentric shaft clamping plate	1	67	Switch	1
27	M6X25 SCREW	1	68	cable	1
28	M18 nut	2	69	cable clamp	1
29	Handrail connecting screw	2	70	4X16 screw	2
30	Armrest plate	1	71	M8X20screw	4
31	Handrail lock block	4	72	6205 bearing	1
32	Spring	2	73	φ25 STW	1
33	pipe handrail	2	74	4 Hole plate	1
34	Armrest tube soft cover	2	75	M5X12 screw	4

35	Cylinder O ring φ67Xφ2.5	1	76	Gear	1
36	Oil hole	1	77	6201 bearing	1
37	Oil hole O ring φ23.5Xφ2.5	1	78	Aluminum lower cover	1
38	Up cover	1	79	M5X22 screw	6
39	M5X22 screw	6	80	arm - rest frame	1
40	Eccentric shaft	1	81	flexible sleeve	1
41	4X4X14 key	1	82	φ4X35 pin	4

**Manufacturer:** Shanghaimuxinmuyeyouxiangongsi

**Address:** Shuangchenglu 803nong11hao1602A-1609shi, baoshanqu, shanghai 200000 CN.

**Imported to AUS:** SIHAO PTY LTD. 1 ROKEVA STREETEASTWOOD NSW 2122 Australia

**Imported to USA:** Sanven Technology Ltd. Suite 250, 9166 Anaheim Place, Rancho Cucamonga, CA 91730

<b>UK</b>	<b>REP</b>	YH CONSULTING LIMITED. C/O YH Consulting Limited Office 147, Centurion House, London Road, Staines-upon-Thames, Surrey, TW18 4AX
-----------	------------	--

<b>EC</b>	<b>REP</b>	E-CrossStu GmbH Mainzer Landstr.69, 60329 Frankfurt am Main.
-----------	------------	--



