

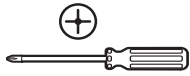
Item # 1005580337

Model # AL13-32FT-RGBWW-1-A

Use and Care Guide

32 ft. LED Color Changing Rope Light

TOOLS REQUIRED

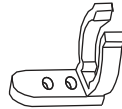


Phillips screwdriver

HARDWARE INCLUDED



A - 8ft. Rope Light x 4



B - Mounting Clip x 16



C - Screw x 32



D - Handheld Remote Control x 1

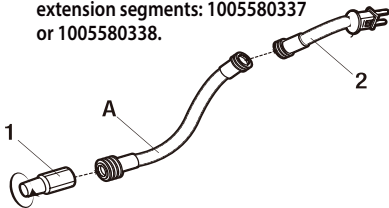


E - 3V CR2025 Battery

Installation

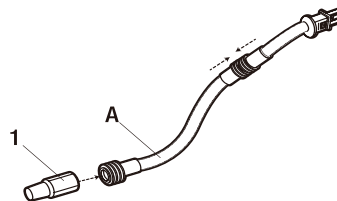
1 PREPARING TO EXTEND THE ROPE LIGHTS

- Ensure all rope lights are unplugged before adding the additional rope light (A) to the series.
- Remove the end cap (1) from the last rope light in the series by turning counterclockwise.
- Remove the power cord (2) from additional extension rope lights (A).
- Extend up to 96ft (29.2 m) maximum. Use only the following Commercial Electric rope light extension segments: 1005580337 or 1005580338.



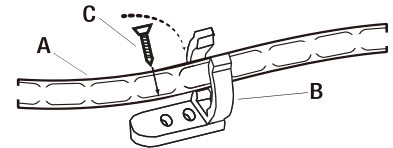
2 CONNECTING THE ROPE LIGHTS

- Connect the last rope light in the series and the extension rope light (A) together and ensure the connectors are tightly secured.
- Attach the end cap (1) to the last rope light in the series and ensure the connection is secure.



3 MOUNTING THE ROPE LIGHTS

- Insert the screw (C) through the opening in the mounting clip (B).
- Screw the mounting clip (B) into position at the installation location.
- Place the rope light (A) securely into the mounting clip (B).
- Mounting clips should be evenly spaced and be a maximum of 3 ft. (0.91 m) apart.
- Make sure the distance between two lines of rope light is at least 1/2 in. (12 mm).



Safety Information

READ AND FOLLOW ALL SAFETY INSTRUCTIONS

- Ground Fault Circuit Interrupter (GFCI) protection should be provided in the circuits or outlet to be used for outdoor use. Receptacles are available that have built-in GFCI protection.
- Only use outdoor extension cords such as typ SW, SOW, STW, STOW, SJW, SJOW, SJTW, or SJTOW. This designation is marked on the wire of the extension cord.
- The rated voltage for this product is 120VAC, 60Hz, 21W, 0.28A.
- Do not operate this product with the flexible light tightly coiled.
- Do not route the cord or flexible light cable through walls, doors, windows, or any similar part of a building structure.
- Do not subject flexible lighting to continuous flexing.
- Do not exceed the maximum extension length in feet permitted by the marking. The maximum extension length for this rope light is 96ft. (29,2 m).
- The RF remote controller included utilizes a 3V CR2025 battery; only replace with same battery type. Please dispose of batteries properly. Batteries are not a toy! If swallowed, contact local emergency services immediately.

SAVE THESE INSTRUCTIONS



WARNING: This product has a polarized plug (one blade is wider than the other) as a feature to reduce the risk of electric shock. This plug will fit in a polarized outlet only one way. If the plug does not fit fully in the outlet, reverse the plug. If it still does not fit, contact a qualified electrician. Never use with an extension cord unless the plug can be fully inserted. Do not alter the plug.



FCC Compliance Statement

This device complies with part 15 of the FCC Rules. Operation is subject to the following two conditions:
1. This device may not cause harmful interference, and
2. This device must accept any interference received, including interference that may cause undesired operation.

FCC WARNING

This equipment has been tested and found to comply with the limits for a Class B digital device, pursuant to Part 15 of the FCC Rules. These limits are designed to provide reasonable protection against harmful interference in a residential installation. This equipment generates, uses and can radiate radio frequency energy and, if not installed and used in accordance with the instructions, may cause harmful interference to radio communications. However, there is no guarantee that interference will not occur in a particular installation. If this equipment does cause harmful interference to radio or television reception, which can be determined by turning the equipment off and on, the user is encouraged to try to correct the interference by one or more of the following measures:

- Reorient or relocate the receiving antenna.
 - Increase the separation between the equipment and the receiver.
 - Connect the equipment into an outlet different from that to which the receiver is connected.
 - Consult the dealer or an experienced radio/TV technician for help.
- Any changes or modifications not expressly approved by the party responsible for compliance could void the user's authority to operate the equipment.



WARNING: When using this product outdoors, basic safety precautions should always be followed to reduce the risk of fire, electric shock, and personal injury.



WARNING: Do not cover this product as the covering may cause the flexible light to overheat and either melt or ignite.



WARNING: Do not puncture, cut, shorten, or splice the flexible lighting.



WARNING: Do not use if there is any damage to the light or cord insulation. Inspect periodically.



WARNING: Do not mount or secure the rope light in a manner than can cut the outer jacket or damage the cord insulation. Inspect the rope light carefully before use and discard any rope lights that have a broken outer jacket, loose connections, or frayed wire insulation.



WARNING: Do not submerge the flexible light in liquids or use the product in the vicinity of standing water or other liquids.



WARNING: Secure the rope lights using only the mounting clips provided. Do not secure this product with staples, nails, or similar objects that may damage the insulation.



WARNING: Do not install the rope light within 16 ft. (4.87 m) of pool or spa. Do not install rope lighting in cabinets, tanks, or enclosures of any kind.



CAUTION: All units must be unplugged before you add additional segments. Only use segments recommended by the manufacturer of this lighting system.



CAUTION: Ensure all connections and the end cap on the last segment are tightly secured to prevent the entry of water.

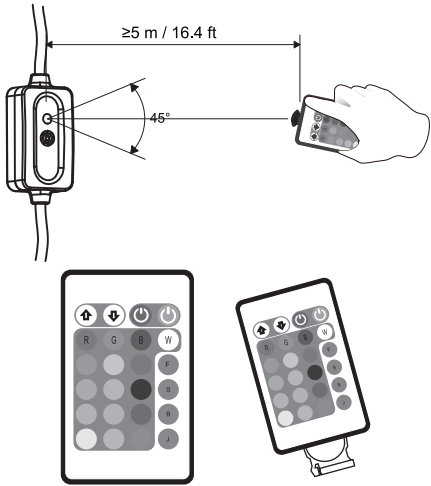
Operation

- To use the handheld remote control for ON/OFF control and color control, remove the plastic tab from the battery door before use.
 - To replace the remote control's battery, follow the directions on the back of the remote control to slide the battery drawer out.
 - Replace the battery (+ side up) and slide the battery drawers back in place.
- Maximum recommended remote control distance is 16.4 ft. (5 m)

Button	Description
	Increase the speed in flash, strobe, fade, and smooth modes.
	Decrease the speed in flash, strobe, fade, and smooth modes.
	Switch off the rope light.
	Switch on the rope light.

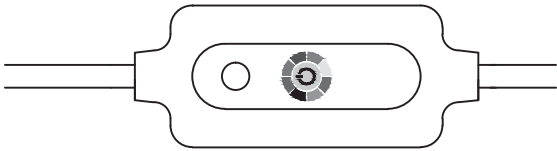
Button	Description
	Select from 16 colors with adjustable brightness.

Button	Description
	Flash Mode: Each color flashes quickly.
	Strobe Mode: The color changes every 3 seconds.
	Fade Mode: The color changes slowly.
	Smooth Mode: The color changes slightly faster than Fade Mode.



- The rope light can also be controlled using the in-line controller attached to the power cord.

Button	Description
	Press the button to toggle through 16 color options, <i>Fade Mode</i> with 16 color options, <i>Smooth Mode</i> with 16 color options, <i>Strobe Mode</i> with 16 color options, <i>Flash Mode</i> with 16 color options, then OFF.



Maintenance

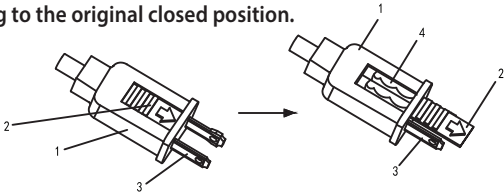
REPLACING THE FUSE



WARNING: Risk of fire. The plug on the main rope light contains an electrical fuse as a safety feature. Do not remove or replace this plug. Do not use the light if the plug is damaged.

o replace the fuse:

- Disconnect the power before replacing the fuse.
- Grasp the plug (1) on the primary rope light and remove from the receptable or other outlet device. Do not unplug by pulling on the cord.
- Slide the fuse access cover (2) towards the prongs of the plug (3) to open.
- Carefully remove the old fuse (4) and replace with a 5-Amp 125-Volt fuse.
- Close the fuse access cover (2) by sliding to the original closed position.



Warranty

The manufacturer warrants this product to be free for two (2) years against any defects that are due to faulty materials or workmanship. This warranty applies only to the original consumer purchaser and only to products used in normal use and service. If this product is found to be defective, the manufacturer's only obligation, and your exclusive remedy, is the repair or replacement of the product at the manufacturer's discretion, provided that the product has not been damaged through misuse, abuse, accident, modifications, alterations, neglect or mishandling. This warranty shall not apply to any product that is found to have been improperly installed, set up, or used in any way not in accordance with the instructions supplied with the product. This warranty shall not apply to a failure of the product as a result of an accident, misuse, abuse, negligence, alteration, or faulty installation or any other failure not relating to faulty workmanship. This warranty shall not apply to the finish on any portion of the product, such as surface and/or weathering, as this is considered normal wear and tear. The manufacturer does not warrant and specifically disclaims any warranty, whether expressed or implied, or fitness for a particular purpose, other than the warranty contained herein. The manufacturer specifically disclaims any liability and shall not be liable for any consequential or incidental loss or damage, including any labor/expense costs involved in the replacement or repair of said product.

Contact the Customer Service Team at 1-877-527-0313 or visit www.HomeDepot.com/Ecosmart



Questions, problems, missing parts? Please call ECOSMART Customer Service
8 a.m. - 7 p.m., EST, Monday - Friday and 9 a.m. - 6 p.m., EST, Saturday
1-877-527-0313

WWW.HOMEDEPOT.COM/ECOSMART

SAVE THESE INSTRUCTIONS FOR FUTURE USE