

## RV AC Installation Guide

Adjustments may be needed during installation. For reference only.

### Installation Requirements

- 1 Power supply with 115-volt, 60-Hz protected with either a 15-amp or 20-amp time-delay fuse or circuit breaker.
- 2 A 14.25" x 14.25" vent hole is needed on the rooftop.
- 3 For ductless systems only. Not for use with ducted systems.

### Step 1 Sealing



Take out one gasket and one sponge with sealing strip. Stick the gasket and sponge to the fixed positions on the outdoor unit chassis.

### Step 2 Outdoor Unit Mounting



Lift the outdoor unit and place it on the roof of the vehicle. Make sure it is mounted horizontally.

### Step 3 Upper Duct Plate Installation



Remove the sticker from the fabric duct and attach it to the flat side of the upper duct plate. Make sure the black side is facing outward.



Fasten the upper fabric duct (assembled) to the chassis with four self-tapping screws (included).

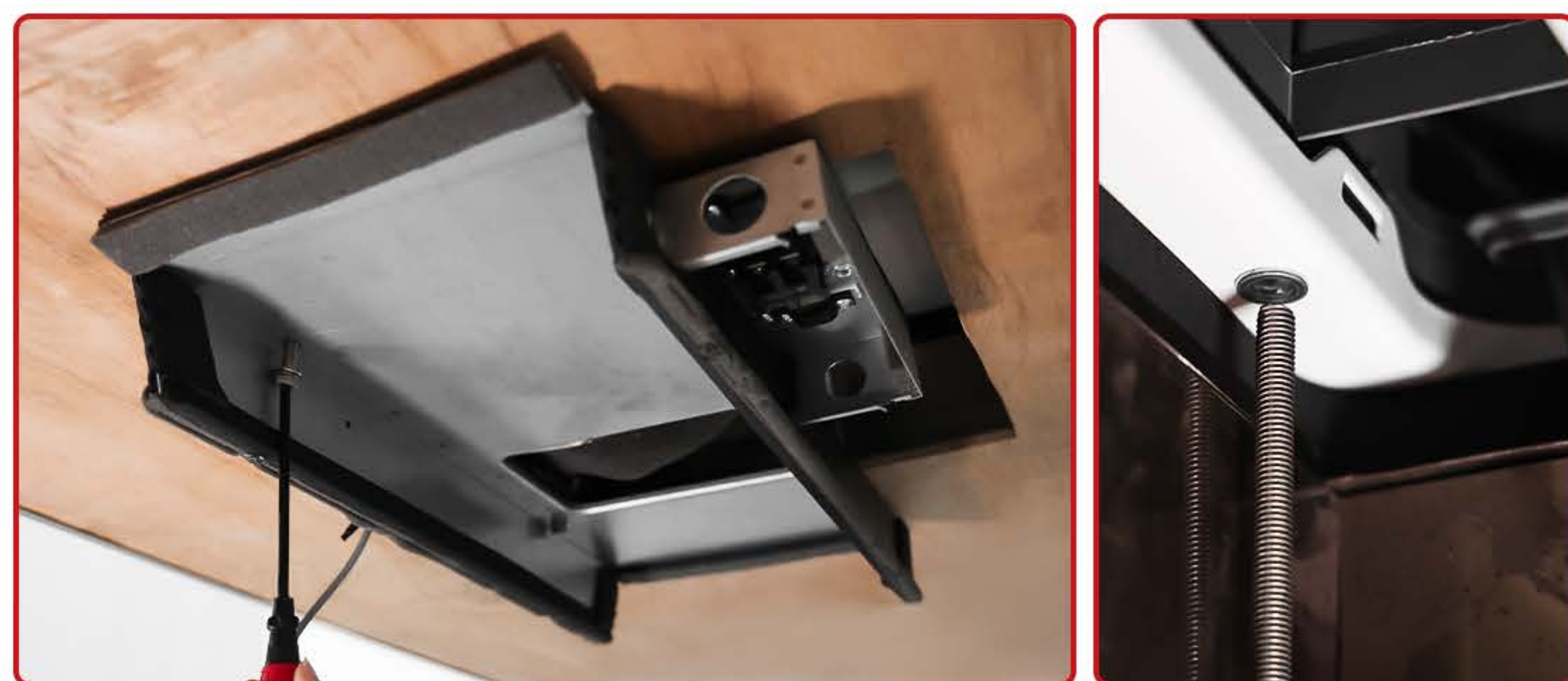
### Step 4 Ceiling Frame Installation



Unscrew the ceiling frame from the ceiling assembly. Keep the four screws for next step.



Before securing the ceiling frame, please take out the wire bundles. Make sure the junction box is oriented in the same direction as the wire bundles.

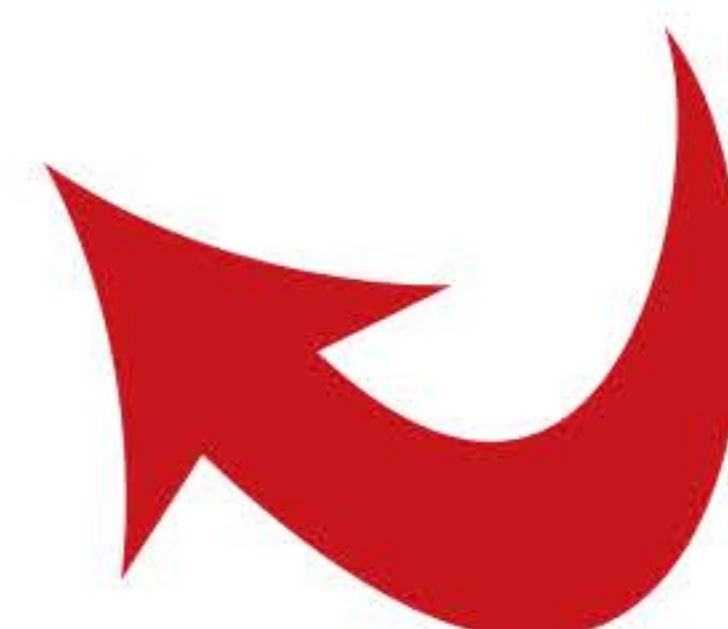


If the roof thickness is between 1.2-3.15 inches, use the provided 5.3" mounting bolts to secure the ceiling frame to the rooftop air conditioner. For roof thickness between 3.15-5.32 inches, please use 7.5" bolts (not included).

### Step 5 Bottom Duct Plate Installation



Secure the bottom duct plate to the ceiling frame with four self-tapping screws and fasten each side of the fabric duct. After securing, trim the spare fabric.

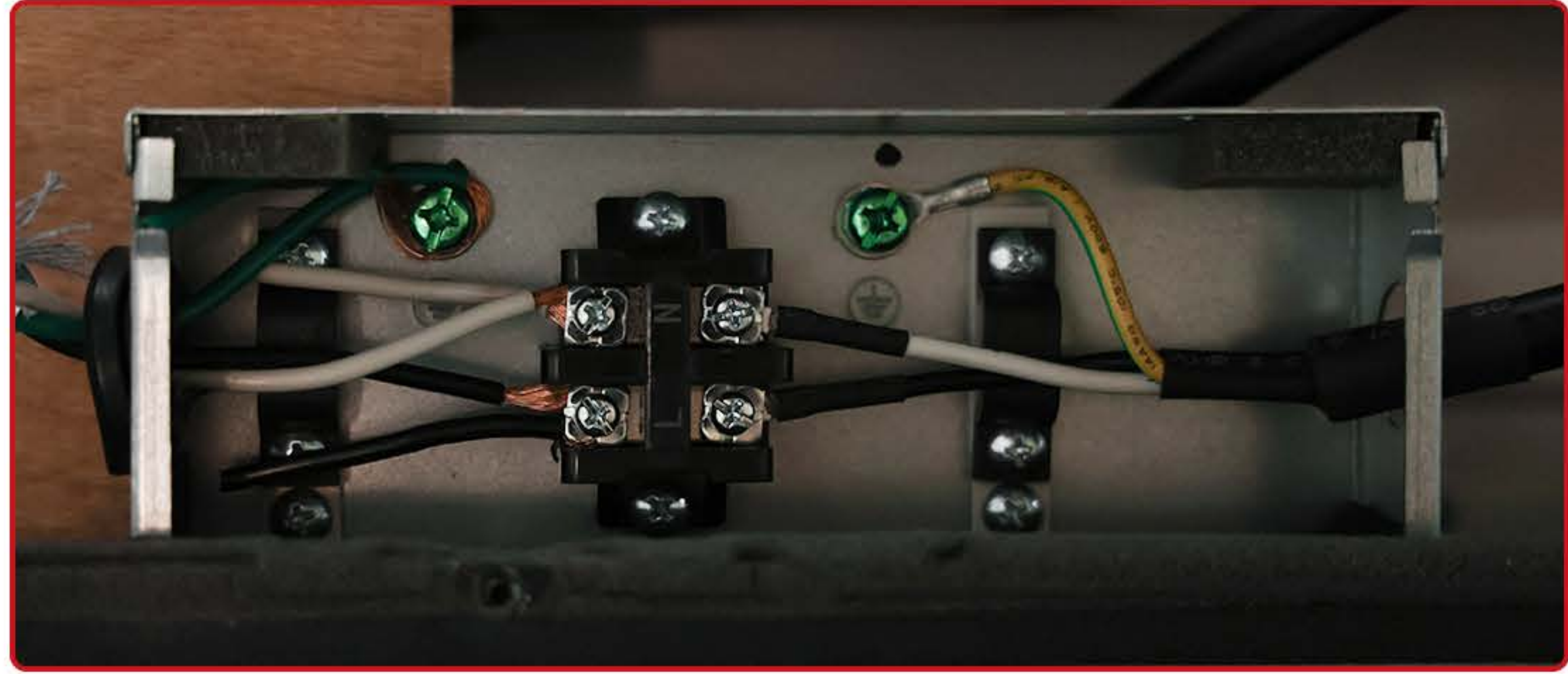




**Step 6 Electric Wiring**



Remove the two screws from the junction box cover. Take the power cord and push it through the hole into the junction box.



Connect the power cord to the terminal board, then reinstall the junction box cover. Connect black wire to L (Live wire), white wire to N (Neutral wire), and the yellow-green wire to Ground.



Connect the control signal wires in the display box of ceiling grille.

**Step 7 Install the Ceiling Assembly Grille**



Secure the ceiling grille to the ceiling frame with four screws. Make sure the ceiling grille is properly positioned. The control panel should be at the front with the RV.

**SERVICE AND CONTACT**

[www.tosotdirect.com](http://www.tosotdirect.com)

Email: [support@tosotdirect.com](mailto:support@tosotdirect.com)

Address: 6140 North Hollywood Boulevard,  
Suite 110, Las Vegas, Nevada 89115 USA



Please feel free to contact us for support and service. Your requirement will be addressed within 24hrs.