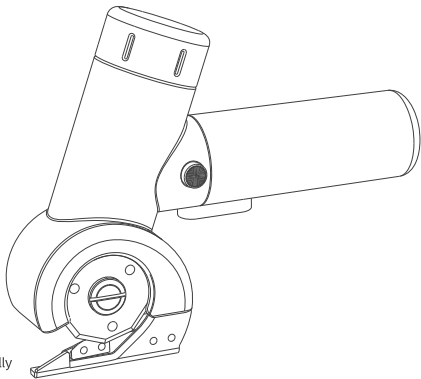


Fanttik

CB Nano Cordless Electric
Scissors

User Manual



Please read this instruction manual carefully
before use and keep it for future reference.

Contents

1.Safety Warning	02
2.Package Contents	08
3.Product Overview	09
4.How To USE	10
5.SPECIFICATIONS	12
6.Warranty Info	13

1.Safety Warning

1) Work area safety

- a) Keep work area clean and well lit. Cluttered or dark areas invite accidents.
- b) Do not operate power tools in explosive atmospheres, such as in the presence of flammable liquids, gases or dust. Power tools create sparks which may ignite the dust or fumes.
- c) Keep children and bystanders away while operating a power tool. Distractions can cause you to lose control.

2) Electrical safety

- a) Power tool plugs must match the outlet. Never modify the plug in any way. Do not use any adapter plugs with earthed(grounded) power tools. Unmodified plugs and matching outlets will reduce risk of electric shock.
- b) Avoid body contact with earthed or grounded surfaces, such as pipes, radiators, ranges and refrigerators. There is an increased risk of electric shock if your body is earthed or grounded.

- c) Do not expose power tools to rain or wet conditions. Water entering a power tool will increase the risk of electric shock.

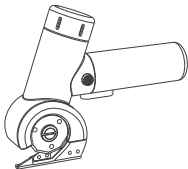
3)Personal safety

- a) Stay alert, watch what you are doing and use common sense when operating a power tool. Do not use a power tool while you are tired or under the influence of drugs, alcohol or medication. A moment of inattention while operating power tools may result in serious personal injury.
- b) Use personal protective equipment. Always wear eye protection. Protective equipment such as dust mask, non-skid safety shoes, hard hat, or hearing protection used for appropriate conditions will reduce personal injuries.
- c) Prevent unintentional starting. Ensure the switch is in the off-position before connecting to power source and/or battery pack, picking up or carrying the tool. Carrying power tools with your finger on the switch or energising power tools that have the switch on invites accidents.
- d) Remove any adjusting key or wrench before turning the power tool on. A wrench or a key left attached to a rotating part of the power tool may result in

personal injury.

- e) Do not overreach. Keep proper footing and balance at all times. This enables better control of the power tool in unexpected situations.
- f) Dress properly. Do not wear loose clothing or jewellery. Keep your hair and clothing away from moving parts. Loose clothes, jewellery or long hair can be caught in moving parts.
- g) If devices are provided for the connection of dust extraction and collection facilities, ensure these are connected and properly used. Use of dust collection can reduce dust-related hazards.
- h) Do not let familiarity gained from frequent use of tools allow you to become complacent and ignore tool safety principles. A careless action can cause severe injury within a fraction of a second.

2.Package Contents



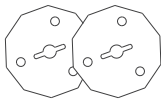
Electric Scissors * 1



Charging Cable * 1



Blade Replacement
Key* 1



Blade * 2



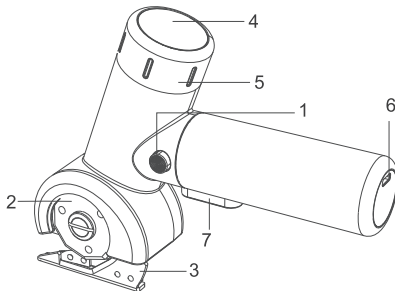
storage bag * 1



User Manual * 1

3.Product Overview

- 1.Lock Switch Button
- 2.Blade
- 3.Support frame
- 4.Display Screen
- 5.Mode selection knob
- 6.Type-C Charging Port
- 7.Power Switch



3.How To USE

OPERATION INTENDED USE

The tool is intended for cutting flexible, soft materials of up to 6.5 mm in thickness, such as carpet, PVC, cardboard, leather, fabrics and similar materials.

1. ON / OFF SWITCH

- Your switch is locked off to prevent accidental starting. Depress lock off button then on/off switch and release lock off button.
- Your tool is now on. To switch off just release the on/off switch.

2. CHARGING THE TOOL

- The device is equipped with a universal Type-C charging port and comes with a USB charging cable. Charger is not included, Please use a 5V charger for charging.
- When the battery is empty, the machine is switched off by means of a protective circuit: the blade will no longer move.
- In a warm environment or after heavy use, the battery pack may become too hot to permit charging. Allow time for the battery to cool down before recharging.

3. Gears Changing

The machine is equipped with three different gears (ECO, REG, MAX), each with a different rotational speed. You can switch gears by rotating the knob next to the screen.

4. CUTTING


Thin materials, such as fabrics, can be pulled into the tool during cutting and become wedged. Therefore, do not apply too much pressure with these materials in order to achieve good cutting results. During cutting, apply sufficient tension while holding fabrics and cut slowly.

WARNING! Do not allow the foot to become wedged during cutting. The foot must be parallel to the cut.

5. Blade Replacing

When the machine is in the off state, you can directly use a screwdriver to align with the slot on the blade flange to remove the blade. Our product adopts patented technology, which allows for easy blade replacement without the need for a shaft lock button.

4.SPECIFICATIONS

Product Name	Electric Scissors
Product Model	C8 Nano
Product Dimension	180*141*56 (mm)
Net Weight	470g
Cutting Depth	6.5 mm
No load speed	250±10% RPM
Rated Voltage	3.7V
Charging Input	5V  2A