

LBEE5PL2DL User Guide



Model Name: **LBEE5PL2DL**

FCC ID: **2AYQH-LBES5PL2EL**, IC: **26882-LBES5PL2EL**

Since this module is not sold to general end users directly, there is no user manual of module.

For the details about this module, please refer to the specification sheet of module.

This module should be installed in the host device according to the interface specification (installation procedure)

The OEM integrator has to be aware not to provide information to the end user regarding how to install or remove this RF module in the end user's manual of the end product which integrates this module.

The end user manual shall include all required regulatory information/warning as shown in User manual.

This device complies with part 15 of the FCC Rules. Operation is subject to the following two conditions:

- (1) This device may not cause harmful interference, and
- (2) this device must accept any interference received, including interference that may cause undesired operation.

This device contains licence-exempt transmitter(s)/receiver(s) that comply with Innovation, Science and Economic Development Canada's licence-exempt RSS(s). Operation is subject to the following two conditions:

- (1) This device may not cause interference.
- (2) This device must accept any interference, including interference that may cause undesired operation of the device.

L'émetteur/récepteur exempt de licence contenu dans le présent appareil est conforme aux CNR d'Innovation, Sciences et Développement économique Canada applicables aux appareils radio exempts de licence. L'exploitation est autorisée aux deux conditions suivantes :

- (1) L'appareil ne doit pas produire de brouillage;
- (2) L'appareil doit accepter tout brouillage radioélectrique subi, même si le brouillage est susceptible d'en compromettre le fonctionnement.

LBEE5PL2DL User Guide



FCC CAUTION Changes or modifications not expressly approved by the party responsible for compliance could void the user's authority to operate the equipment.

This transmitter must not be co-located or operated in conjunction with any other antenna or transmitter.

This device complies with below part 15 of the FCC Rules.

Part 15 Subpart C

Part 15 Subpart E

Since there is no space which indicates FCC ID on this module, FCC ID is indicated in a manual. If the FCC ID is not visible when the module is installed inside another device, then the module is installed must also display a label referring to the enclosed module.

The modular transmitter is only FCC authorized for the specific rule parts (i.e., FCC transmitter rules) listed on the grant, and the host product manufacturer is responsible for compliance to any other FCC rules that apply to the host not covered by the modular transmitter grant of certification.

The final host product still requires Part 15 Subpart B compliance testing with the modular transmitter installed.

This module designed for mounting inside of the end product by us professionally.

Therefore, it complies with the antenna and transmission system requirements of §15.203.

Since there is no space which indicates FCC ID on this module, FCC ID is indicated in a manual. If the FCC ID is not visible when the module is installed inside another device, then the module is installed must also display a label referring to the enclosed module.

This manual is based on KDB 996369, which is designed to ensure that module manufacturer correctly communication the necessary information to host manufacturers that incorporate their modules.

INTEGRATION INSTRUCTIONS

1. General: Applicable

Sections 2 through 10 describe the items that must be provided in the integration instructions for host product manufacturers (e.g., OEM instruction manual) to use when integrating a module in a host product. This Modular transmitter applicant(EXFO) should include information in their instructions for all these items indicating clearly when they are not applicable.

2. List of applicable FCC rules: Applicable

<p>This device complies with below part 15 of FCC Rules. Part 15 Subpart C Part 15 Subpart E</p>
--

3. Summarize the specific operational use conditions : Applicable

This module designed for mounting inside of the end product by us professionally.
Therefore, it complies with the antenna and transmission system requirements of §15.203.

4. Limited module procedures : Applicable

This module needs to supply a regulated voltage from host device.

Since there is no space which indicates FCC ID on this module, FCC ID is indicated in a manual.
If the FCC ID is not visible when the module is installed inside another device, then the module is installed must also display a label referring to the enclosed module.

5. Trace antenna designs: Applicable

Please perform the Trace antenna design that followed the specifications of the antenna.

The concrete contents of a check are the following three points.

- 1) It is the same type as the antenna type of antenna specifications.
Confirm the same size as the Gerber file.
- 2) An antenna gain is lower than a gain given in antenna specifications.
Measure the gain, and confirm the peak gain is less than the application value.
- 3) The emission level is not getting worse.
Measure the spurious, and confirm degradation of less than 3dB than spurious value of worst of report used for the application. However it is spurious defined below. Please send those reports to EXFO.

And please refer Antenna in Section 6 of the installation manual.

6. RF exposure considerations: Applicable

This equipment complies with FCC and ISED RSS-102 radiation exposure limits set forth for an uncontrolled environment. This transmitter must not be co-located or operating in conjunction with any other antenna or transmitter. In order to avoid the possibility of exceeding the FCC and ISED RSS-102 radio frequency exposure limits, this equipment should be installed and operated with minimum distance 20 cm (7.9 inches) between the antenna and your body during normal operation. Users must follow the specific operating instructions for satisfying RF exposure compliance.

Cet équipement est conforme aux limites d'exposition aux rayonnements FCC et ISED CNR-102 établies pour un environnement non contrôlé. Cet émetteur ne doit pas être installé ou utilisé en conjonction avec une autre antenne ou un autre émetteur. Afin d'éviter la possibilité de dépasser les limites d'exposition aux radiofréquences FCC et ISED, cet équipement doit être installé et utilisé avec une distance minimale de 20 cm (7.9 pouces) entre l'antenne et votre corps pendant le fonctionnement normal. Les utilisateurs doivent suivre les instructions spécifiques d'utilisation pour respecter la conformité à l'exposition aux RF.

7. Antennas : Applicable

Part number	Vendor	Peak Gain(dBi)		Type	Connector
		2.4GHz	5GHz		
146153	Molex	3.2	4.25	Dipole	u.FL
219611	Molex	2.67	3.67	Dipole	u.FL
WT32D1-KX	Unictron	3.0	4.0	Dipole	u.FL
W24P-U	Invertek	3.2	N/A	Dipole	u.FL
Type2EL_Antenna	Murata	3.6	4.6	Monopole	Trace

- No.4 W24P-U can only be used at 2.4GHz
- No.5 Type2EL_Antenna can only be used for ANT0(Antenna Port0)

8. Label and compliance information: Applicable

The following statements must be described on the user manual of the host device of this module;

Contains Transmitter Module FCC ID: 2AYQH-LBES5PL2EL

or

Contains FCC ID: 2AYQH-LBES5PL2EL

This device complies with part 15 of the FCC Rules. Operation is subject to the following two conditions: (1) This device may not cause harmful interference, and (2) this device must accept any interference received, including interference that may cause undesired operation.

*If it is difficult to describe this statement on the host product due to the size, please describe in the User's manual.

FCC CAUTION

Changes or modifications not expressly approved by the party responsible for compliance could void the user's authority to operate the equipment.

Compliance with FCC requirement 15.407(c)

Data transmission is always initiated by software, which is then passed down through the MAC, through the digital and analog baseband, and finally to the RF chip. Several special packets are initiated by the MAC. These are the only ways the digital baseband portion will turn on the RF transmitter, which it then turns off at the end of the packet. Therefore, the transmitter will be on only while one of the aforementioned packets is being transmitted. In other words, this device automatically discontinues transmission in case of either absence of information to transmit or operational failure.

Frequency Tolerance: ± 20 ppm

This transmitter must not be co-located or operated in conjunction with any other antenna or transmitter.

LBEE5PL2DL User Guide



When installing it in a mobile equipment. Please describe the following warning to the manual.

This equipment complies with FCC and ISED radiation exposure limits set forth for an uncontrolled environment and meets the FCC and ISED radio frequency (RF) Exposure Guidelines. This equipment should be installed and operated keeping the radiator at least 20cm or more away from person's body.

Cet équipement est conforme aux limites d'exposition aux radiations définies par la FCC et l'ISDE pour un environnement non contrôlé et respecte les directives d'exposition aux radiofréquences (RF) de la FCC et d'ISDE. Cet équipement doit être installé et utilisé en maintenant une distance d'au moins 20 cm entre la structure radiante de la source RF et le corps de l'utilisateur ou d'un tiers.

This module is only approval as a mobile equipment.

Therefore, do not install it on portable equipment.

If you wish to use it as a portable equipment, please contact Murata in advance as Class II application accompanied by SAR testing using the final product are required.

Note)

Portable equipment : Equipment for which the spaces between human body and antenna are used within 20cm.

Mobile equipment : Equipment used at position in which the spaces between human body and antenna exceeded 20cm.

9. Information on test modes and additional testing requirements: Applicable

Please check the installation manual first.

Please contact EXFO if you have any questions when conducting the RF certification test on the host. We (EXFO) are ready to present the control manual and others for the RF certification test.

10. Additional testing, Part 15 Subpart B disclaimer: Applicable

The modular transmitter is only FCC authorized for the specific rule parts (i.e., FCC transmitter rules) listed on the grant, and the host product manufacturer is responsible for compliance to any other FCC rules that apply to the host not covered by the modular transmitter grant of certification.

The final host product still requires Part 15 Subpart B compliance testing with the modular transmitter installed.

LBEE5PL2DL User Guide



If the final product with this module is FCC Class A digital device, include the following in the manual of the final product:

Note: This equipment has been tested and found to comply with the limits for a Class A digital device, pursuant to part 15 of the FCC Rules. These limits are designed to provide reasonable protection against harmful interference when the equipment is operated in a commercial environment. This equipment generates, uses, and can radiate radio frequency energy and, if not installed and used in accordance with the instruction manual, may cause harmful interference to radio communications. Operation of this equipment in a residential area is likely to cause harmful interference in which case the user will be required to correct the interference at his own expense.

If the final product with this module is FCC Class B digital device, include the following in the manual of the final product:

Note: This equipment has been tested and found to comply with the limits for a Class B digital device, pursuant to part 15 of the FCC Rules. These limits are designed to provide reasonable protection against harmful interference in a residential installation. This equipment generates, uses and can radiate radio frequency energy and, if not installed and used in accordance with the instructions, may cause harmful interference to radio communications. However, there is no guarantee that interference will not occur in a particular installation. If this equipment does cause harmful interference to radio or television reception, which can be determined by turning the equipment off and on, the user is encouraged to try to correct the interference by one or more of the following measures:

- Reorient or relocate the receiving antenna.
- Increase the separation between the equipment and receiver.
- Connect the equipment into an outlet on a circuit different from that to which the receiver is connected.
- Consult the dealer or an experienced radio/TV technician for help.

11. Note EMI Considerations : Applicable

Note that a host manufacture is recommended to use KDB 996369 D04 Module Integration Guide recommending as "best practice" RF design engineering testing and evaluation in case non-linear interactions generate additional non-compliant limits due to module placement to host components or properties.

For standalone mode, reference the guidance in D04 Module Integration Guide and for simultaneous mode7; see D02 Module Q&A Question 12, which permits the host manufacturer to confirm compliance.

12. How to make changes: Applicable

When changing from the conditions of approval, please present technical documentation that it is equivalent to a Class I change. For example, when adding or changing an antenna, the following technical documents are required.

- 1)The document indicating the same type as the original antenna
- 2)Technical document showing that the gain is the same or lower than the gain at the time of the original approval
- 3)Technical document showing that the spurious is no more than 3 dB worse than when it was originally certified

About Power supply (Limited condition)

This Module, LBEE5PL2DL, has been FCC Certified as a Limited Modular as the RF circuitry does not have a voltage stabilizing circuit in the power path. Therefore, this module's FCC authorization is only valid when the regulated voltages shown in the table below are supplied.

Parameter		Min.	Typ.	Max.	unit
Supply Voltage	AVDD33	3.14	3.3	3.46	V
	AVDD18	1.71	1.8	1.89	V
	VIO	1.71 3.14	1.8 3.3	1.89 3.46	V
	SD_VIO	1.71 3.14	1.8 3.3	1.89 3.46	V

Trace antenna and feed line

■About the signal line between an antenna and a module

It is a 50-ohm line design.

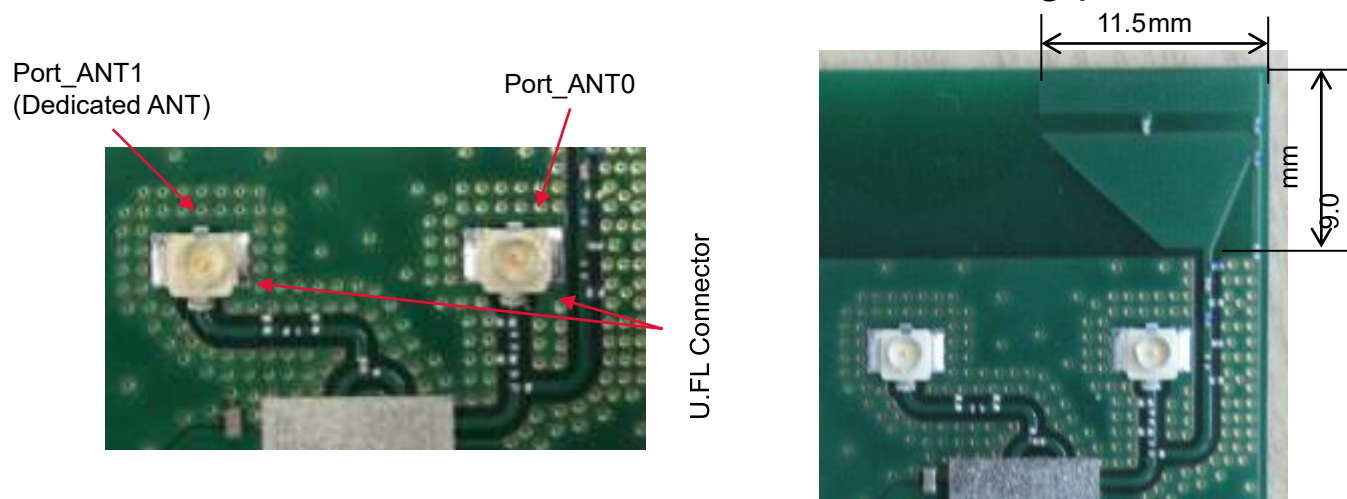
Fine tuning of return loss etc. can be performed using a matching network. However, it is required to check "Class1 change" and "Class2 change" which the authorities define then. The concrete contents of a check are the following three points.

- 1) It is the same type as the antenna type of antenna specifications.
- 2) An antenna gain is lower than a gain given in antenna specifications.
- 3) The emission level is not getting worse.

The following is the design of the EVB used for the test.

50-ohm line(microstrip line length) and Trace Antenna(Type2EL_Antenna)

Certification tests are conducted in the following patterns.



The 50ohm microstrip line and Type2EL_Antenna needs to be copied when module is installed in the End product.

EXFO provides set makers with Gerber data or something similar.
About the Trace antenna and feed line of the jig where the certification test was conducted

LBEE5PL2DL User Guide

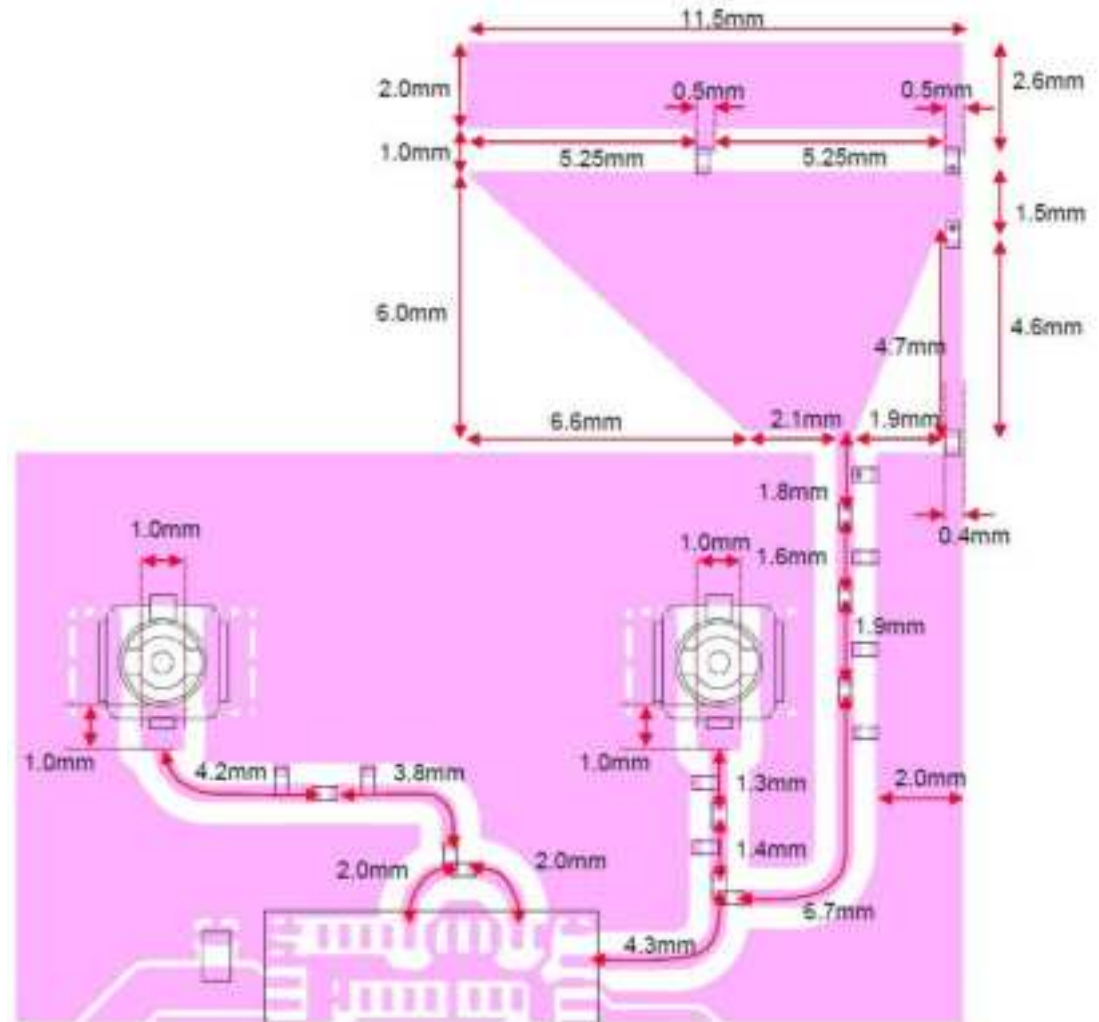


Substrate type name of certification test jig:
P2ML10229

feed line width : 0.4mm Substrate thin : 0.8 ± 0.1 mm

Substrate material: FR -4

Substrate thickness between GND layer and
surface layer: 0.235mm



LBEE5PL2DL User Guide



Layout Guidance for Microstrip Design and External Antenna

About Trace antenna(Type2EL_Antenna).

The LBES5PL2EL (LBEE5PL2DL) module is certified with a PCB antenna(Type2EL_Antenna).

The following precautions should be taken when using this PCB antenna(Type2EL_Antenna).

Type2EL_Antenna can only be used for port_ANT0 side.

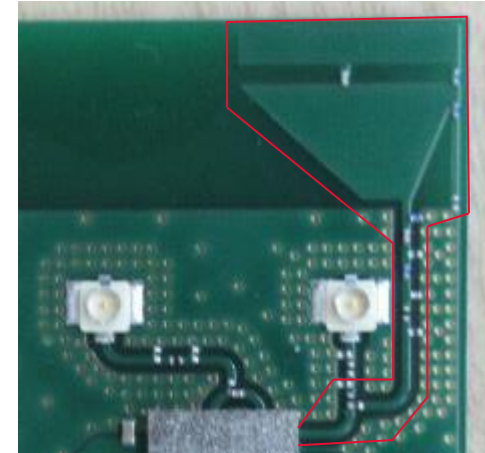
When the module is installed in the final product,

the 50 ohm microstrip line and Type2EL_Antenna, outlined in right red, must be copied to the state shown in the photo below where it was certified.

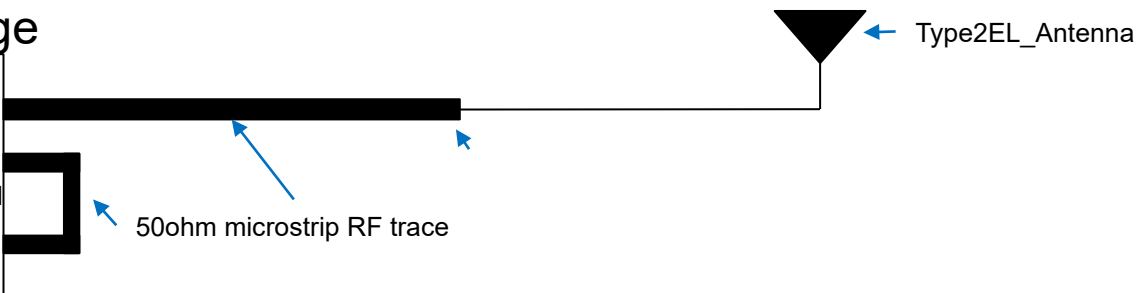
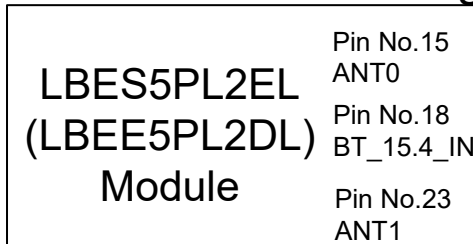
Port_ANT1 can use the following four antennas when it is in Dedicated Usage.

146153, 219611, WT32D1-KX, W24P-U

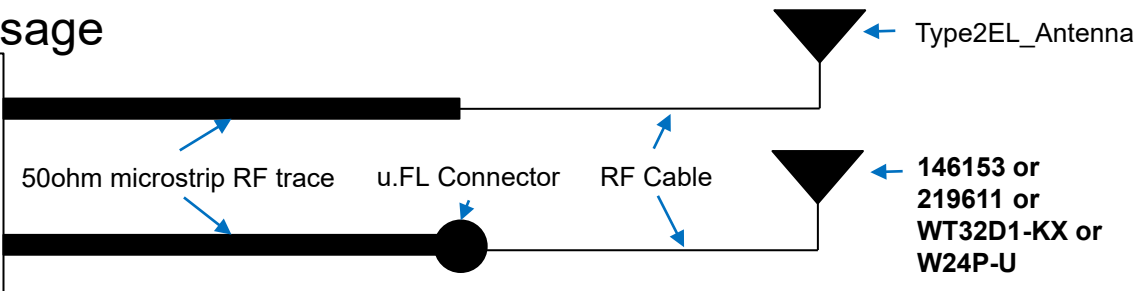
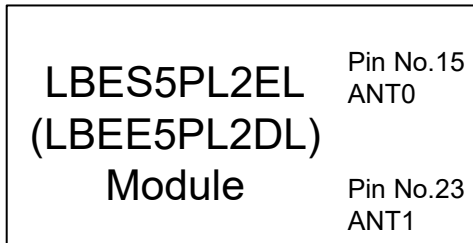
EXFO provides set makers with Gerber data or something similar.



Shared Antenna Usage



Dedicated Antenna Usage



Layout Guidance for Microstrip Design and External Antenna

About Antenna with uFL connector and cables and feed lines (146153, 219611, WT32D1-KX, W24P-U).

The LBES5PL2EL (LBEE5PL2DL) module is certified with four external antenna.

The external antenna should be connected to the LBES5PL2EL (LBEE5PL2DL) module using 50ohm microstrip RF trace and a U.FL RF connector as shown below.

The microstrip RF trace and U.FL connector are placed on the customer's PCB and are external to the LBES5PL2EL (LBEE5PL2DL) module.

The antenna is then connected to this u.FL Connector via a 50ohm RF adapter cable.

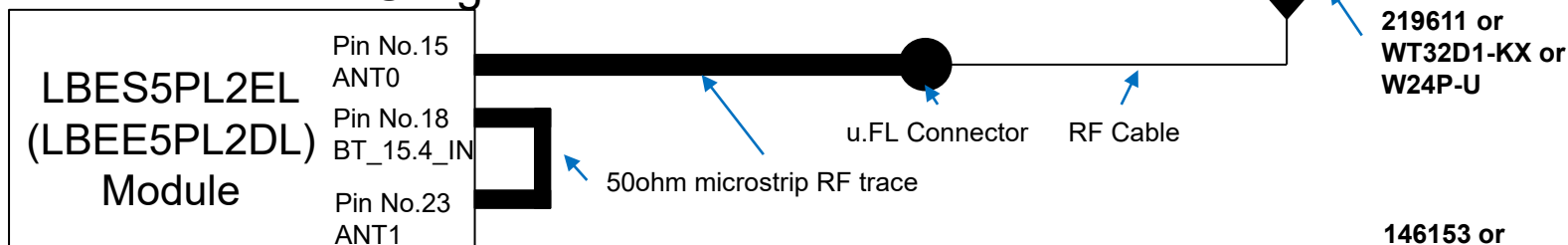
The design of the 50ohm microstrip RF trace on the customer's PCB is crucially important.

Compliant operation of the LBES5PL2EL (LBEE5PL2DL) module is dependent on proper construction of this 50ohm line and the following guidelines must be followed to ensure legal operation of the product.

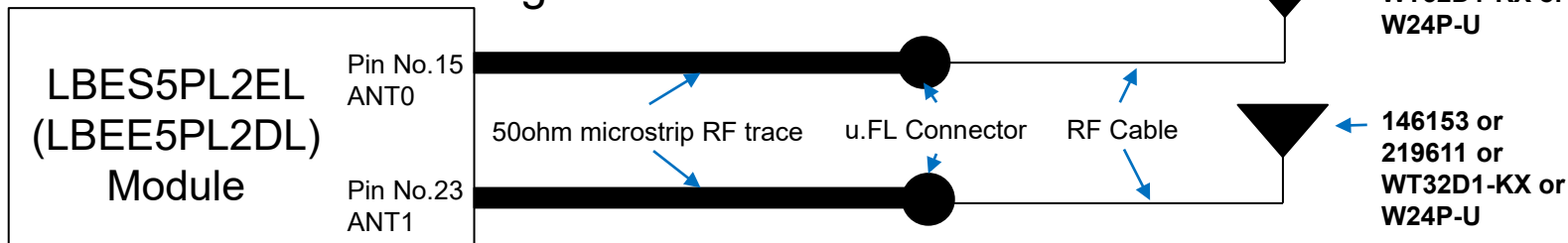
The diagram below shows the required microstrip structure to be routed between module pin 15, 23 and the u.FL connector.

The top PCB trace carries the RF energy from module to UFL connector.

Shared Antenna Usage



Dedicated Antenna Usage



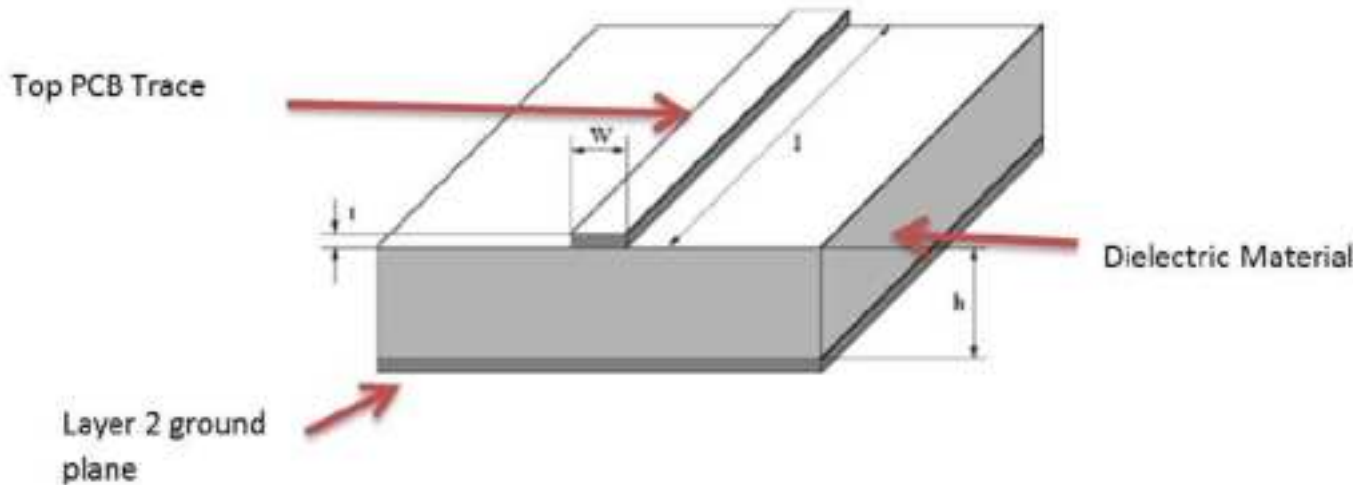
50ohm microstrip RF trace : EXFO provides set makers with Gerber data or something similar.

LBEE5PL2DL User Guide



The Layer2 ground plane provides a return path for the circuit.

The Dielectric material (along with the dimensions of the microstrip structures) determines the characteristic impedance of the microstrip transmission line.



Note the representative dimensions shown in the drawing above.

It is imperative that the module customer (the integrator) use the exact dimensions we recommend to ensure a 50-ohm impedance for this transmission line. The following dimensions and/or ratios should be used to set the microstrip impedance to 50ohms.

Dielectric (PCB) Material — We recommend standard FR4 PCB material. Other dielectrics will work but will require recalculation of microstrip dimensions. The following guidance is predicated on the use of FR4 Dielectric.

If FR4 is not used for PCB material, please contact EXFO to determine new dimensions for microstrip structure.

H (Dielectric Height) — this is the thickness of dielectric between the trace layer (layer 1) and the ground plane on layer 2. Note that layer 2 must be electrical ground. We recommend a dielectric thickness of 8-15 mils. This range provides the customer with some flexibility in board construction.

t (trace thickness) — Microstrip impedance is not severely affected by the thickness dimension.

Standard 102 or 202 copper deposition is recommended. Equivalent thickness is 1-2 mils.

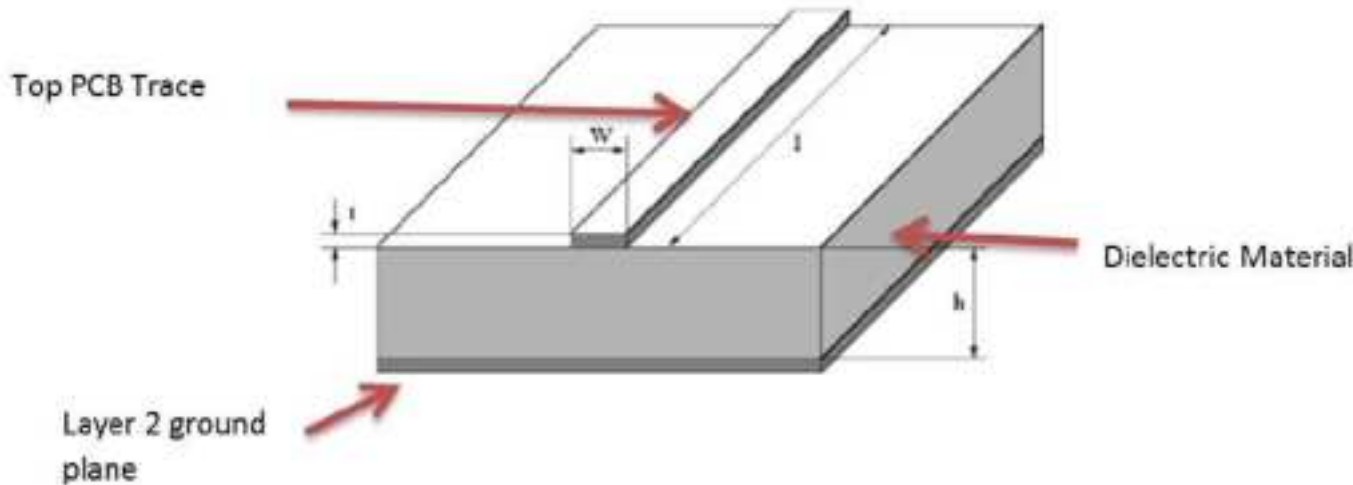
W (trace width) — this is the crucial dimension. This width must be set correctly to obtain the desired 50 ohms impedance. When using FR-4 dielectric, the width (W) of the microstrip trace should be set to: $W = H * 1.8$

LBEE5PL2DL User Guide



The Layer2 ground plane provides a return path for the circuit.

The Dielectric material (along with the dimensions of the microstrip structures) determines the characteristic impedance of the microstrip transmission line.



Note the representative dimensions shown in the drawing above.

It is imperative that the module customer (the integrator) use the exact dimensions we recommend to ensure a 50-ohm impedance for this transmission line. The following dimensions and/or ratios should be used to set the microstrip impedance to 50ohms.

Dielectric (PCB) Material — We recommend standard FR4 PCB material. Other dielectrics will work but will require recalculation of microstrip dimensions. The following guidance is predicated on the use of FR4 Dielectric.

If FR4 is not used for PCB material, please contact EXFO to determine new dimensions for microstrip structure.

H (Dielectric Height) — this is the thickness of dielectric between the trace layer (layer 1) and the ground plane on layer 2. Note that layer 2 must be electrical ground. We recommend a dielectric thickness of 8-15 mils. This range provides the customer with some flexibility in board construction.

t (trace thickness) — Microstrip impedance is not severely affected by the thickness dimension.

Standard 102 or 202 copper deposition is recommended. Equivalent thickness is 1-2 mils.

W (trace width) — this is the crucial dimension. This width must be set correctly to obtain the desired 50 ohms impedance. When using FR-4 dielectric, the width (W) of the microstrip trace should be set to: $W = H * 1.8$